

STATE OF ILLINOIS
DEPARTMENT OF TRANSPORTATION
DIVISION OF HIGHWAYS
PLANS FOR PROPOSED
FEDERAL AID HIGHWAY

PENNSY GREENWAY SPUR BIKE PATH
ILL./IND. STATE LINE TO LITTLE CALUMET RIVER
PROJECT NO.: TE-00D1(783)
SECTION NO.: 06-P4045-02-SP
LAN-OAK PARK DISTRICT
COOK COUNTY
JOB NO.: C-91-020-08

F. A. RITE	SECTION	COUNTY	TOTAL SHEETS	SHEET NO.
	06-P4045-02-SP	COOK	12	1
STA.		TO STA.		
FED. ROAD DIST. NO. 1	ILLINOIS	FED. AID PROJECT TE-00D1(783)		

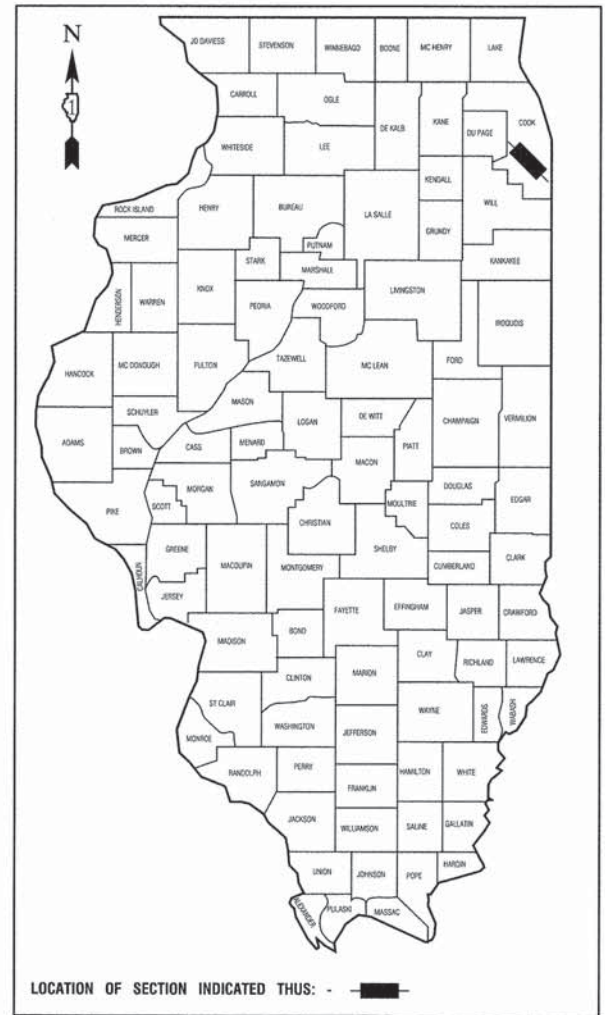
CONTRACT #61B32

INDEX OF SHEETS

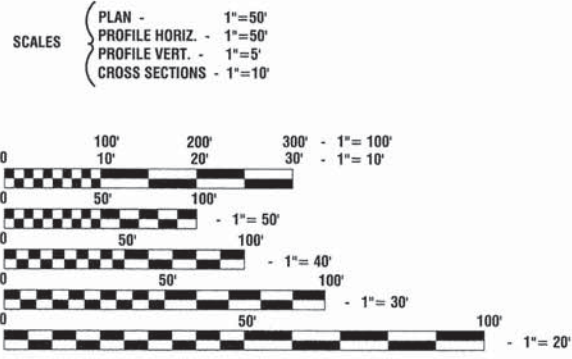
1. COVER SHEET, INDEX OF SHEETS & STATE STANDARDS
2. SUMMARY OF QUANTITIES & GENERAL NOTES
3. PLANTING TABLES
4. PLANTING GENERAL DETAILS
- 5.-9. IMPROVEMENT PLANS
- 10.-11. TRAIL SIGNAGE
12. ENTRANCE SIGN DETAIL

HIGHWAY STANDARDS

- | | |
|-----------|---|
| 000001-06 | STANDARD SYMBOLS ABBREVIATIONS & PATTERNS |
| 701801-05 | SIDEWALK CORNER OR CROSSWALK CLOSURE |
| 701901-04 | TRAFFIC CONTROL DEVICES |
| 720001-01 | SIGN PANEL MOUNT DETAILS |



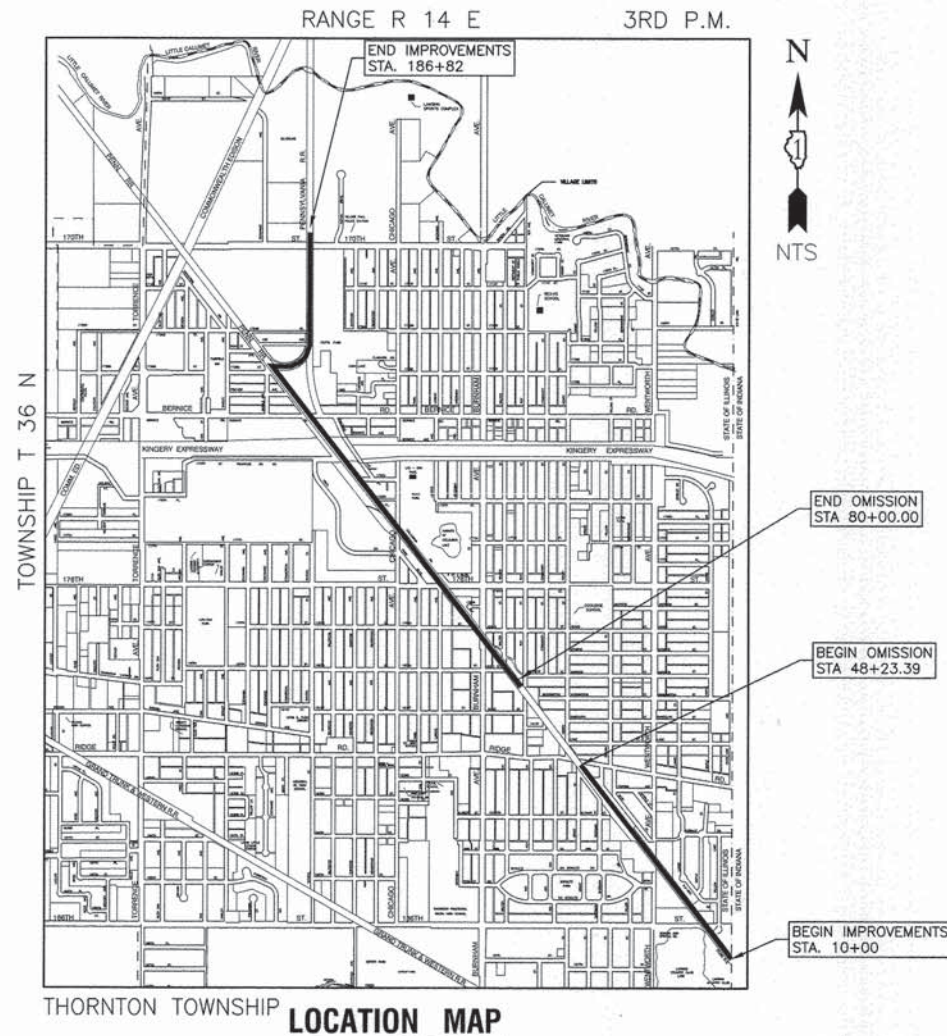
THIS PROJECT IS LOCATED IN THE VILLAGE OF LANSING



FULL SIZE PLANS HAVE BEEN PREPARED USING STANDARD ENGINEERING SCALES, REDUCED SIZED PLANS WILL NOT CONFORM TO STANDARD SCALES, IN MAKING MEASUREMENTS ON REDUCED PLANS, THE ABOVE SCALES MAY BE USED.

J. U. L. I. E.
 JOINT UTILITY LOCATION INFORMATION FOR EXCAVATION
 1-800-892-0123 or 811

CONTRACT NO. 61B32



GROSS LENGTH=17,682 FEET=3.35 MILES
 NET LENGTH=14,505 FEET=2.75 MILES

STATE OF ILLINOIS DEPARTMENT OF TRANSPORTATION
 DIVISION OF HIGHWAYS

Approved: *[Signature]* 1/29/15
 Local Public Agency, Lan-Oak Park District

Passed: FEBRUARY 18, 2015
[Signature] CHRISTOPHER HOYT
 District 1 Engineer of Local Roads & Streets

Released for Bid Based on Limited Review: February 18, 2015
[Signature]
 Deputy Director of Highways, Region 1 Engineer

PRINTED BY THE AUTHORITY OF THE STATE OF ILLINOIS

PREPARED BY OR UNDER THE DIRECT SUPERVISION OF:
[Signature] 1/30/15
 JOSEPH M. NORDLAW
 062-051092 REGISTERED PROFESSIONAL ENGINEER
 STATE OF ILLINOIS
 LICENSE EXPIRES: 11/30/15

FEDERAL AID PROGRAM ENGINEER: FAWAD AQUEEL, P.E. 847-705-4021, SCHAMBOURG, IL
 CONSULTANTS: ROBINSON ENGINEERING, LTD. 708-331-6700

SUMMARY OF QUANTITIES				TOTAL QUANTITY	CONSTRUCTION TYPE CODE
S.I.	CODE NO.	ITEM	UNIT		
	20101700	SUPPLEMENTAL WATERING	UNIT	4	4
	67100100	MOBILIZATION	L SUM	1	1
	70102640	TRAFFIC CONTROL AND PROTECTION, STANDARD 701801	L SUM	1	1
*	72000100	SIGN PANEL - TYPE 1	SQ FT	23	23
	D2003848	EVERGREEN, THUJA OCCIDENTALIS TECHNY (TECHNY ARBORVITAE), 4' HEIGHT, BALLED AND BURLAPPED	EACH	45	45
	K0012990	PERENNIAL PLANTS, ORNAMENTAL TYPE, GALLON POT	UNIT	9	9
	K0026850	PERENNIAL PLANT CARE	SQ YD	660	660
	K1005481	SHREDDED BARK MULCH 3"	SQ YD	330	330
	X0301115	LANDSCAPE EDGING	FOOT	475	475
*	X0324062	ENTRANCE SIGN	L SUM	1	1
*	X0327018	DECORATIVE SIGN POST	EACH	16	16
	X2110100	TOPSOIL FURNISH AND PLACE, SPECIAL	CU YD	110	110
*	X7200105	SIGN PANEL - TYPE 1 (SPECIAL)	SQ FT	168	168
*	X7200205	SIGN PANEL - TYPE 2 (SPECIAL)	SQ FT	33	33

* - INDICATES SPECIALTY ITEMS

GENERAL NOTES

- BOTH ROBINSON ENGINEERING, LTD. (708-331-6700) AND THE LAN-OAK PARK DISTRICT (708-474-5020) SHALL BE NOTIFIED TWO (2) WORKING DAYS BEFORE CONSTRUCTION BEGINS.
- WHEN IN THE CONSTRUCTION OPERATION, ANY LOOSE MATERIAL IS DEPOSITED IN THE FLOW LINE OF DITCHES, GUTTERS OR OTHER DRAINAGE STRUCTURES SO THAT THE NATURAL FLOW OF WATER IS OBSTRUCTED, IT SHALL BE REMOVED AT THE CLOSE OF EACH DAY BY THE CONTRACTOR AT HIS EXPENSE.
- EXISTING DRAINAGE FACILITIES SHALL NOT BE UNNECESSARILY DISTURBED. THE CONTRACTOR SHALL PROVIDE TEMPORARY DRAINAGE FACILITIES WHEREVER NECESSARY TO MAINTAIN EXISTING DRAINAGE OUTLETS. THIS WORK SHALL BE INCLUDED IN THE COST OF RELATED PAY ITEMS.
- AREAS DISTURBED BY CONSTRUCTION SHALL BE KEPT TO A MINIMUM. ALL AREAS DISTURBED UNNECESSARILY SHALL BE RESTORED TO THE PRE-CONTRACT CONDITIONS AT THE CONTRACTOR'S EXPENSE.
- IT SHALL BE THE CONTRACTOR'S RESPONSIBILITY TO NOTIFY J.U.L.I.E. AT LEAST 48 HOURS PRIOR TO EXCAVATION TO VERIFY LOCATIONS OF ALL UTILITIES.
- CONTRACTOR SHALL PROVIDE THE ENGINEER WITH A VIDEO RECORDING DETAILING ALL SURFACE CONDITIONS WITHIN THE PROJECT AREA PRIOR TO EXCAVATION. ALL RESTORATION SHALL BE COMPLETED TO THE SATISFACTION OF THE OWNER AND ENGINEER.
- CONTRACTOR SHALL BE RESPONSIBLE AT ALL TIMES FOR TRAFFIC CONTROL AND PROTECTION. THIS WORK SHALL BE INCLUDED IN THE COST OF RELATED PAY ITEMS.
- ITEMS OF WORK LISTED IN THE SUMMARY OF QUANTITIES NOT SPECIFICALLY CALLED OUT ON THE PLANS SHALL BE PERFORMED AS DIRECTED BY THE ENGINEER.
- THE CONTRACTOR SHALL KEEP AN "AS BUILT" SET OF DRAWINGS WHICH WILL SHOW ANY CHANGES MADE IN THE FIELD WHICH ARE DIFFERENT THAN WHAT IS SHOWN ON THE PLANS. TWO (2) COPIES OF THE "AS BUILT" DRAWINGS ARE TO BE SUBMITTED TO THE ENGINEER BEFORE THE PROJECT IS ACCEPTED BY THE OWNER.
- CONTRACTOR SHALL ESTABLISH LOCATION OF ALL SIGNS AND MARKING FOR APPROVAL BY THE ENGINEER PRIOR TO INSTALLATION.
- ALL PLANT MATERIALS SHALL CONFORM TO THE LATEST EDITION OF AMERICAN STANDARD FOR NURSERY STOCK AS PUBLISHED BY THE AMERICAN NURSERY AND LANDSCAPE ASSOCIATION, 230 SOUTHERN BUILDING, WASHINGTON D.C. 20005 (ANSI Z60.1)
- ALL PLANTS OF THE SAME SPECIES SHALL BE OBTAINED FROM THE SAME NURSERY SOURCE FROM APPROVED IDOT SUPPLIERS UNLESS APPROVED BY THE ENGINEER.
- THE LANDSCAPE CONTRACTOR SHALL INFORM THE ENGINEER AS EACH PHASE OF WORK IS UNDERTAKEN TO ALLOW THE ENGINEER TO BE PRESENT DURING THE WORK.
- THE CONTRACTOR SHALL STAKE THE LOCATION OF ALL TREES AND OTHER LANDSCAPE FEATURES FOR APPROVAL BY THE ENGINEER.
- THE CONTRACTOR SHALL GIVE AT LEAST 48 HOURS NOTICE TO THE ENGINEER PRIOR TO PLANTING OPERATIONS TO VERIFY PLANTS IMMEDIATELY PRIOR TO PLANTING. IF NOTICE IS NOT GIVEN BY THE CONTRACTOR, HE SHALL REMOVE/REPLACE PLANTS AS DIRECTED BY THE ENGINEER AT NO ADDITIONAL EXPENSE TO THE OWNER.
- PRUNE BROKEN OR CROSS BRANCHING AT THE TIME OF PLANTING. DO NOT REMOVE LEADER.
- TREES SHALL BE SET IN TRUE, VERTICAL ALIGNMENT AFTER PLANTING.
- ALL PLANTS SHALL BE PLANTED PER THE LANDSCAPE PLAN AND SPECIFICATIONS. PLANTINGS NOT FOUND TO BE IN COMPLIANCE SHALL BE REPLANTED CORRECTLY AT NO ADDITIONAL EXPENSE TO THE OWNER.
- ADJUST SHRUBS, PERENNIALS, AND GROUND COVER SPACING AS NECESSARY TO EVENLY FILL PLANTING BEDS.
- THE ENGINEER OR OWNER RESERVES THE RIGHT TO REJECT PLANTS ON SITE WHETHER STOCK PILED OR PLANTED IN PLACE. REJECTED PLANTS SHALL BE REMOVED IMMEDIATELY FROM SITE.
- ALL PLANTS SHALL BE GROUPED TOGETHER BY SPECIES AND SIZE AND SHALL BE COVERED WITH MULCH OR COMPOST TO PREVENT DESICCATION.
- SUBSTITUTION OF PLANT MATERIAL DUE TO LACK OF AVAILABILITY MUST BE APPROVED BY THE ENGINEER. SUBSTITUTE PLANTS SHALL BE THE SAME SIZE, OR LARGER, THAN THE ITEMS SPECIFIED.
- THE CONTRACTOR SHALL COMPLY WITH THE FOLLOWING INSTALLATION AND MAINTENANCE PROCEDURES:
-NEW TREES AND SHRUBS SHALL BE WATERED AND MAINTAINED UNTIL FIRMLY ESTABLISHED.
-NEW TREES AND SHRUBS SHALL BE PRUNED TO REMOVE ALL DEAD AND DAMAGED WOODS.
- WHEN THE PLANS OR SPECIAL PROVISIONS INCLUDE INFORMATION PERTAINING TO THE LOCATION OF UNDERGROUND UTILITY FACILITIES, SUCH INFORMATION REPRESENTS ONLY THE OPINION OF THE VILLAGE OF LANSING AS TO THE LOCATION OF SUCH UTILITIES AND IS ONLY INCLUDED FOR THE CONVENIENCE OF THE BIDDER.

Planting Area 5 SE Corner @ 178th St		
Perennial Name	Quantity	Unit
False Indigo Purple Smoke	8	Gallon
Purple Palace Coralbell	18	Gallon
Catmint	12	Gallon
Black-Eyed Susan	14	Gallon
Golden Jubilee Hyssop	16	Gallon
Calamintha	13	Gallon
Salvia May Night	17	Gallon
Snow In Summer	32	Gallon
Area:	70	SY
Perimeter:	100	LF
Edging:	100	LF
Topsoil:	23	CU YD

Planting Area 11 NW Corner @ Chicago		
Perennial Name	Quantity	Unit
Sedum Kamtchaticum	26	Gallon
Huskers Red Beardtongue	12	Gallon
Obsidian Coralbells	5	Gallon
Goatsbeard Horatico	5	Gallon
Lambs Ear	30	Gallon
Blue Star	13	Gallon
Little Bluestem	13	Gallon
Golden Jubilee Hyssop	24	Gallon
Catmint	24	Gallon
Calamintha	12	Gallon
Purple Palace Coralbell	10	Gallon
Area:	70	SY
Perimeter:	100	LF
Edging:	100	LF
Topsoil:	23	CU YD

Perennial Summary - Areas 5,6,8,11,12		
Plant Name	Quantity	Size
Anise Hyssop	10	Gallon
Black-Eyed Susan	14	Gallon
Blue Star	23	Gallon
Brunnera	60	Gallon
Calamintha	35	Gallon
Catmint	49	Gallon
Columbine	60	Gallon
Dwarf Pennisetum	10	Gallon
False Indigo Purple Smoke	8	Gallon
Geranium	60	Gallon
Goatsbeard Horatico	11	Gallon
Golden Jubilee Hyssop	53	Gallon
Huskers Red Beardtongue	24	Gallon
Lambs Ear	57	Gallon
Little Bluestem	23	Gallon
Marjoram	10	Gallon
Obsidian Coralbells	11	Gallon
Prairie Blazing Star	10	Gallon
Purple Palace Coralbell	38	Gallon
Salvia May Night	17	Gallon
Sea Lavender	10	Gallon
Sedum Kamtchaticum	47	Gallon
Sedum Voodoo/Matrona	13	Gallon
Snow In Summer	32	Gallon
Stachys Big Ears	15	Gallon
Total	700	

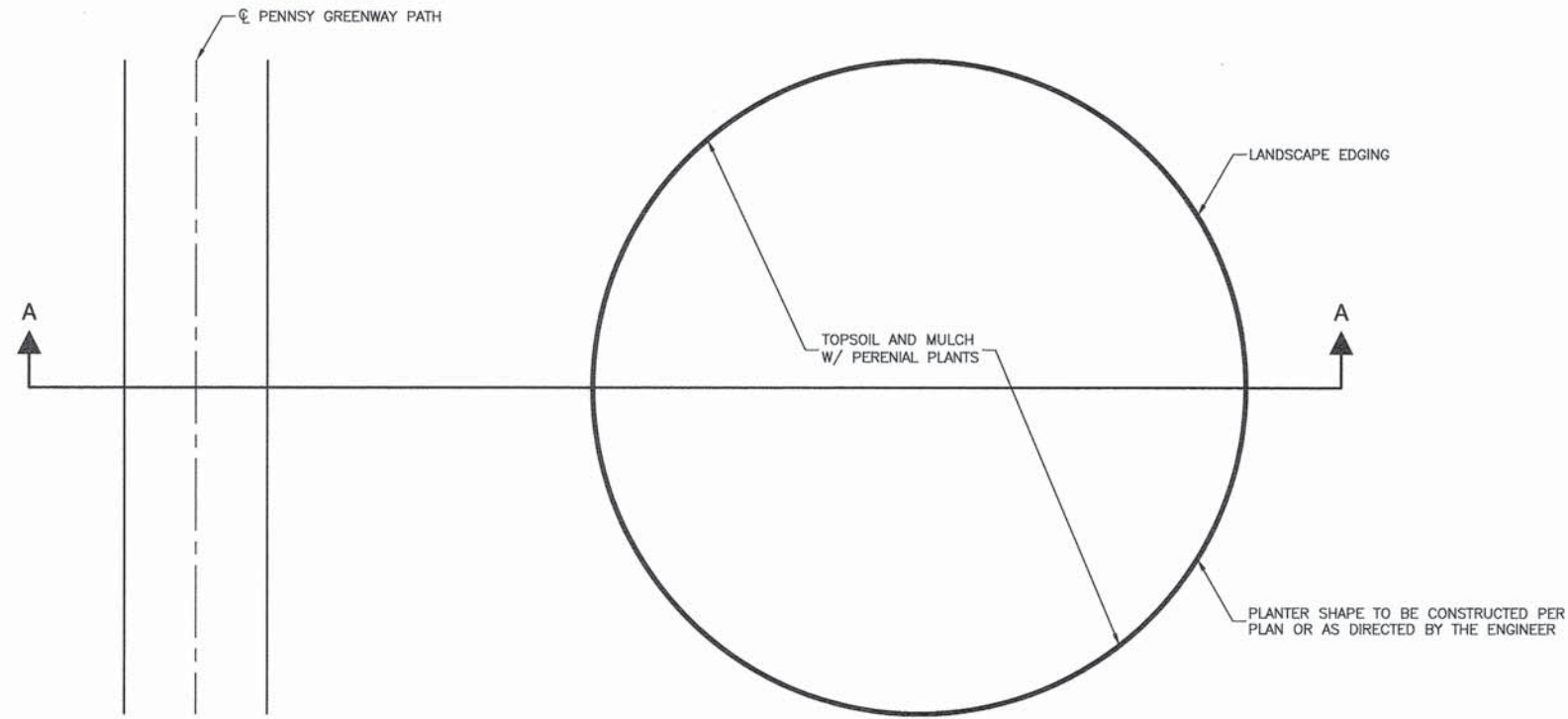
Planting Area 6 NW Corner @ 178th St		
Perennial Name	Quantity	Unit
Sedum Kamtchaticum	21	Gallon
Huskers Red Beardtongue	12	Gallon
Obsidian Coralbells	6	Gallon
Goatsbeard Horatico	6	Gallon
Lambs Ear	27	Gallon
Blue Star	10	Gallon
Little Bluestem	10	Gallon
Golden Jubilee Hyssop	13	Gallon
Catmint	13	Gallon
Calamintha	10	Gallon
Purple Palace Coralbell	10	Gallon
Area:	70	SY
Perimeter:	100	LF
Edging:	100	LF
Topsoil:	23	CU YD

Planting Area 12		
Perennial Name	Quantity	Unit
Anise Hyssop	10	Gallon
Sea Lavender	10	Gallon
Dwarf Pennisetum	10	Gallon
Prairie Blazing Star	10	Gallon
Marjoram	10	Gallon
Sedum Voodoo/Matrona	13	Gallon
Stachys Big Ears	15	Gallon
Area:	50	SY
Perimeter:	75	LF
Edging:	75	LF
Topsoil:	18	CU YD

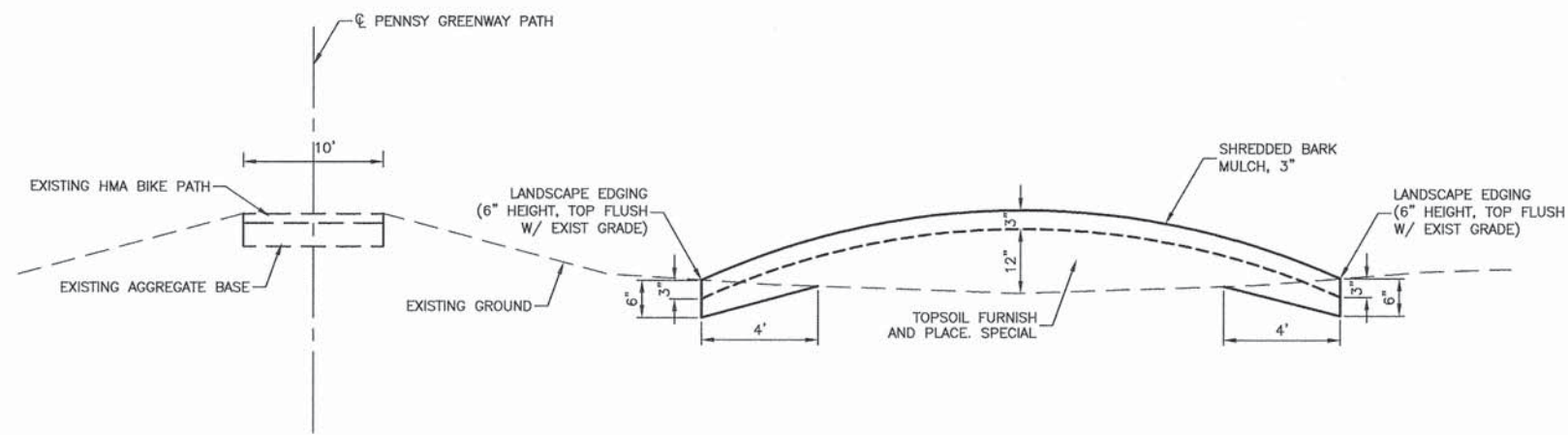
Planting Area 8 SE Corner @ Chicago Ave		
Perennial Name	Quantity	Unit
Geranium	60	Gallon
Columbine	60	Gallon
Brunnera	60	Gallon
Area:	70	SY
Perimeter:	100	LF
Edging:	100	LF
Topsoil:	23	CU YD

Perennial Summary	Locations Determined By Engineer *	
	Quantity	Size
Brunnera	40	Gallon
Columbine	40	Gallon
Geranium	40	Gallon
Lambs Ear	40	Gallon
Sedum Kamtchaticum	40	Gallon
Total	200	

NOTE:
 *200 GALLON SIZE PERENNIALS WILL BE PLANTED AS DIRECTED BY THE ENGINEER AS COORDINATED WITH THE LOCAL AGENCY, LAN OAK PARK DISTRICT.



PLAN VIEW



ELEVATION "A-A"

NOTE:

MATERIAL EXCAVATED TO INSTALL PLANTER AREAS SHALL BE SPREAD EVENLY WITHIN EXISTING RIGHT OF WAY ADJACENT TO PLANTER AREAS. THIS WORK SHALL NOT BE PAID SEPARATELY AND SHALL BE INCIDENTAL TO THE CONTRACT.

FILE NAME = 06494-TYPX-01 - IDOT P01

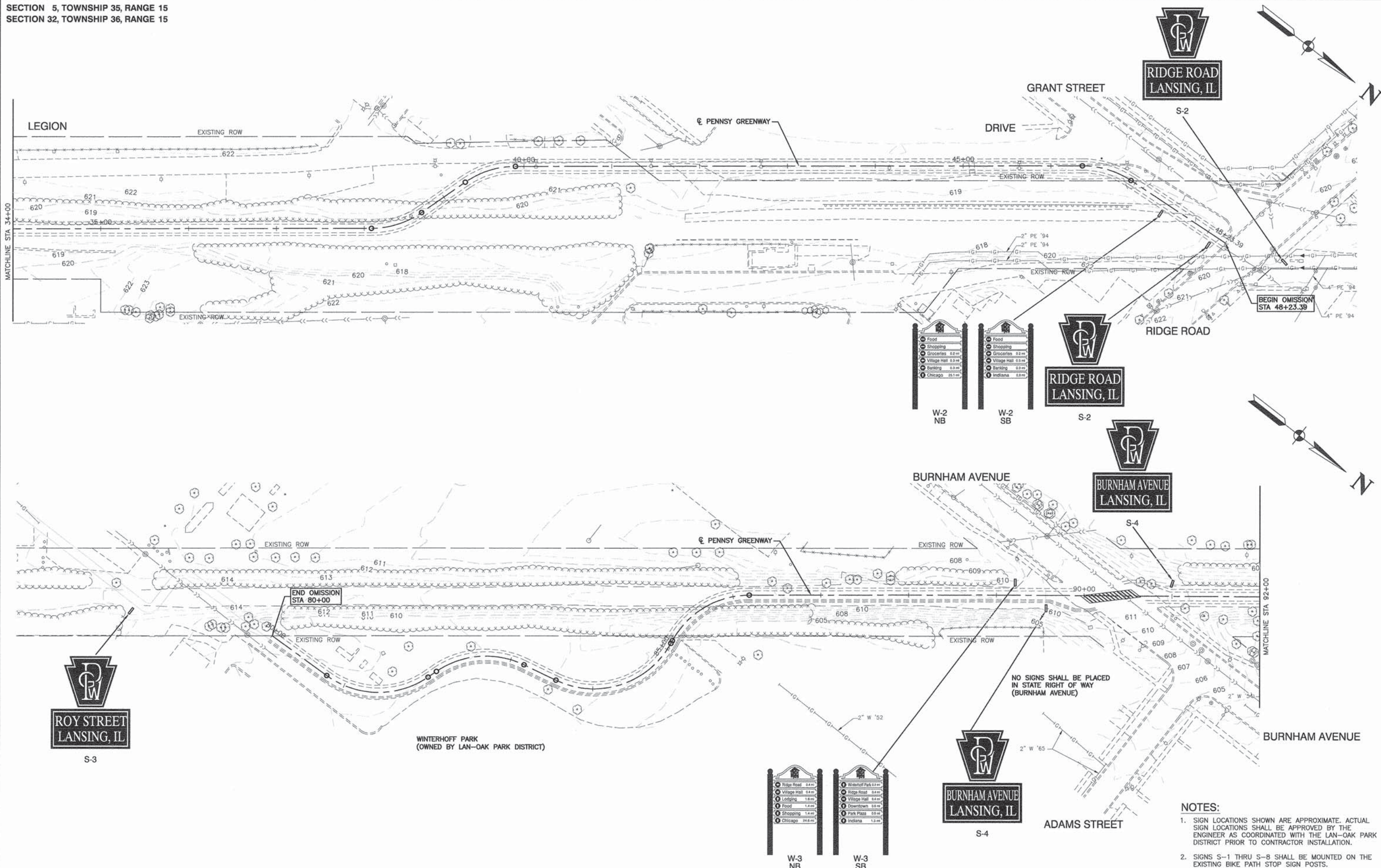
USER NAME =	DESIGNED -- BWT	REVISED --
	CHECKED -- JMN	REVISED --
PLOT SCALE =	DRAWN -- RG	REVISED --
PLOT DATE = 05-14-15	CHECKED -- AG	REVISED --

STATE OF ILLINOIS
DEPARTMENT OF TRANSPORTATION

LAN-OAK PARK DISTRICT PENNSY GREENWAY SPUR BIKE PATH PLANTING AREA GENERAL DETAILS	
SCALE: NONE	SHEET NO. 4 OF 12 SHEETS
STA.	TO STA.

F.A. RTE.	SECTION	COUNTY	TOTAL SHEETS	SHEET NO.
	06-P4045-02-SP	COOK	12	4
CONTRACT NO. 61B32				
FED. ROAD DIST. NO. 1 ILLINOIS FED. AID PROJECT TE-00D1(783)				

LEFT: DANIELA H. HESTER/NOV 08/10/10
RIGHT: JIMMY B. GILBERT/NOV 08/10/10



- NOTES:**
- SIGN LOCATIONS SHOWN ARE APPROXIMATE. ACTUAL SIGN LOCATIONS SHALL BE APPROVED BY THE ENGINEER AS COORDINATED WITH THE LAN-OAK PARK DISTRICT PRIOR TO CONTRACTOR INSTALLATION.
 - SIGNS S-1 THRU S-8 SHALL BE MOUNTED ON THE EXISTING BIKE PATH STOP SIGN POSTS.

FILE NAME = 06494-PLAN-01 - IDOT P2	USER NAME =	DESIGNED -- BWT	REVISED --
		CHECKED -- JMN	REVISED --
	PLOT SCALE =	DRAWN -- MD/RG	REVISED --
	PLOT DATE = 05-14-15	CHECKED -- AG	REVISED --

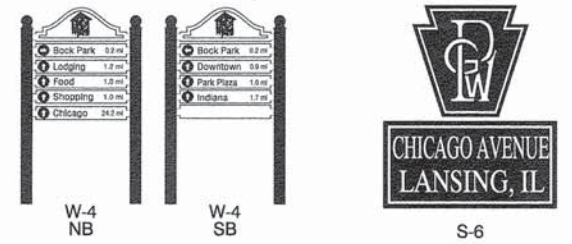
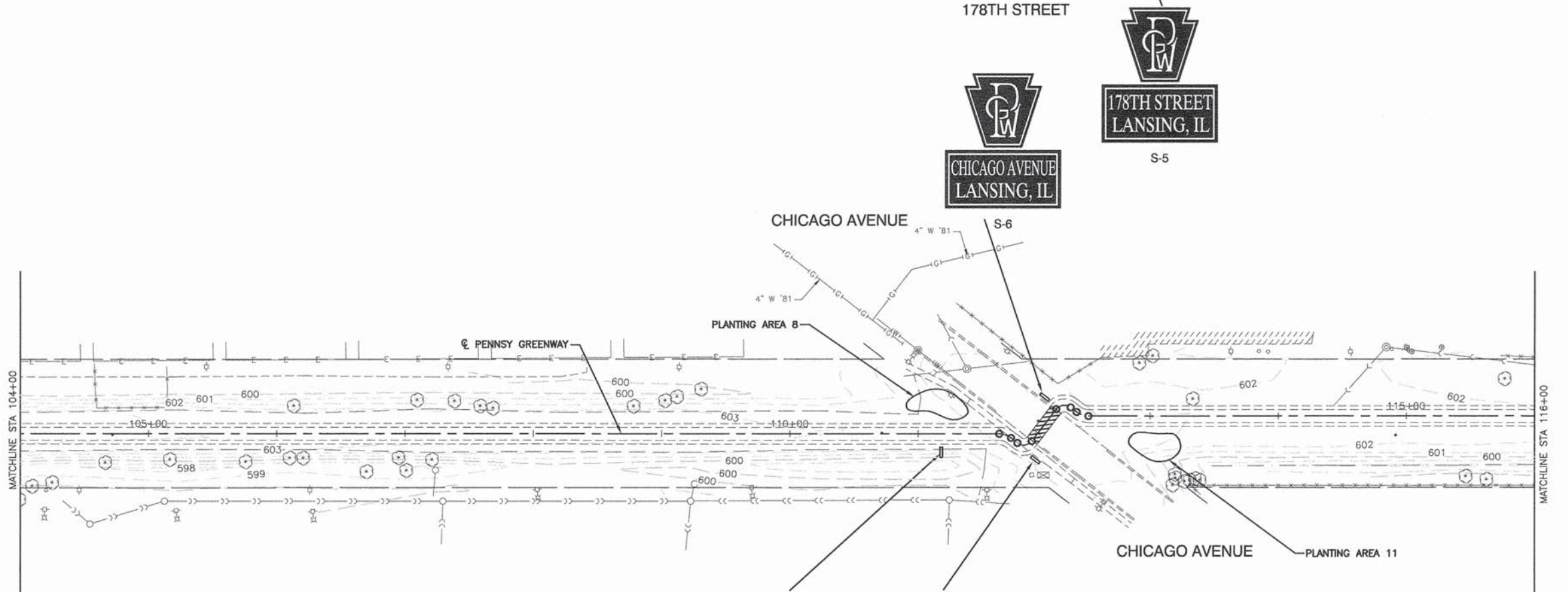
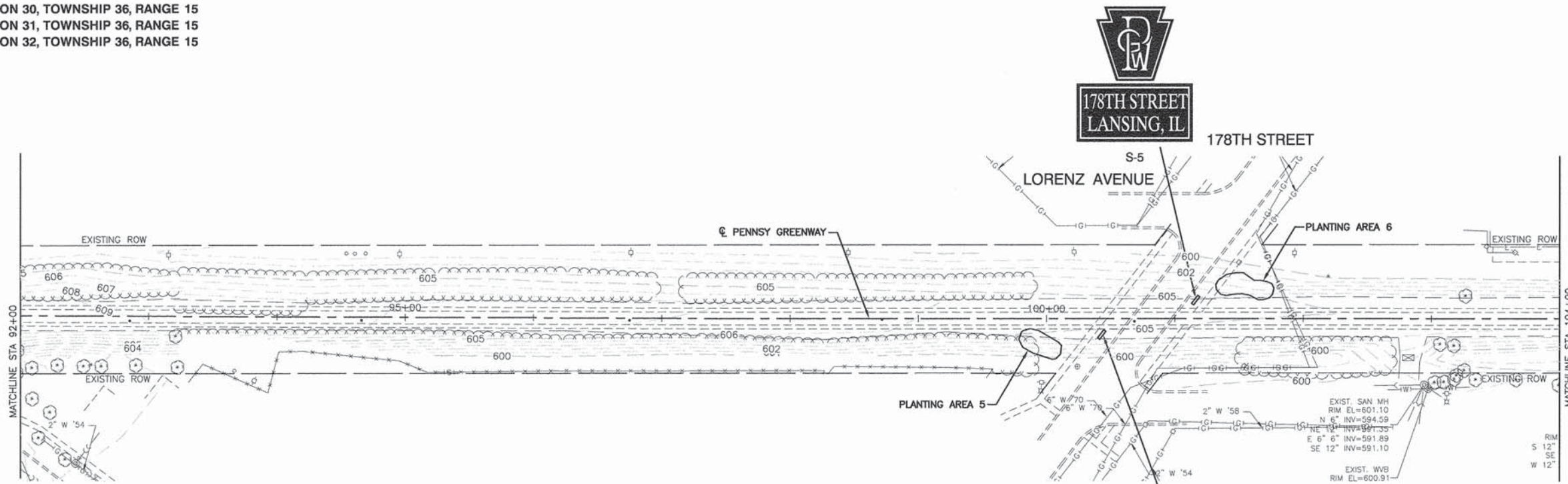
STATE OF ILLINOIS
DEPARTMENT OF TRANSPORTATION

LAN-OAK PARK DISTRICT
PENNSY GREENWAY SPUR BIKE PATH
IMPROVEMENT PLANS

SCALE: 1"=50'
SHEET NO. 6 OF 12 SHEETS
STA. TO STA.

F.A. RTE.	SECTION	COUNTY	TOTAL SHEETS	SHEET NO.
	06-P4045-02-SP	COOK	12	6
CONTRACT NO. 61B32				
FED. ROAD DIST. NO. 1 ILLINOIS FED. AID PROJECT TE-0001(783)				

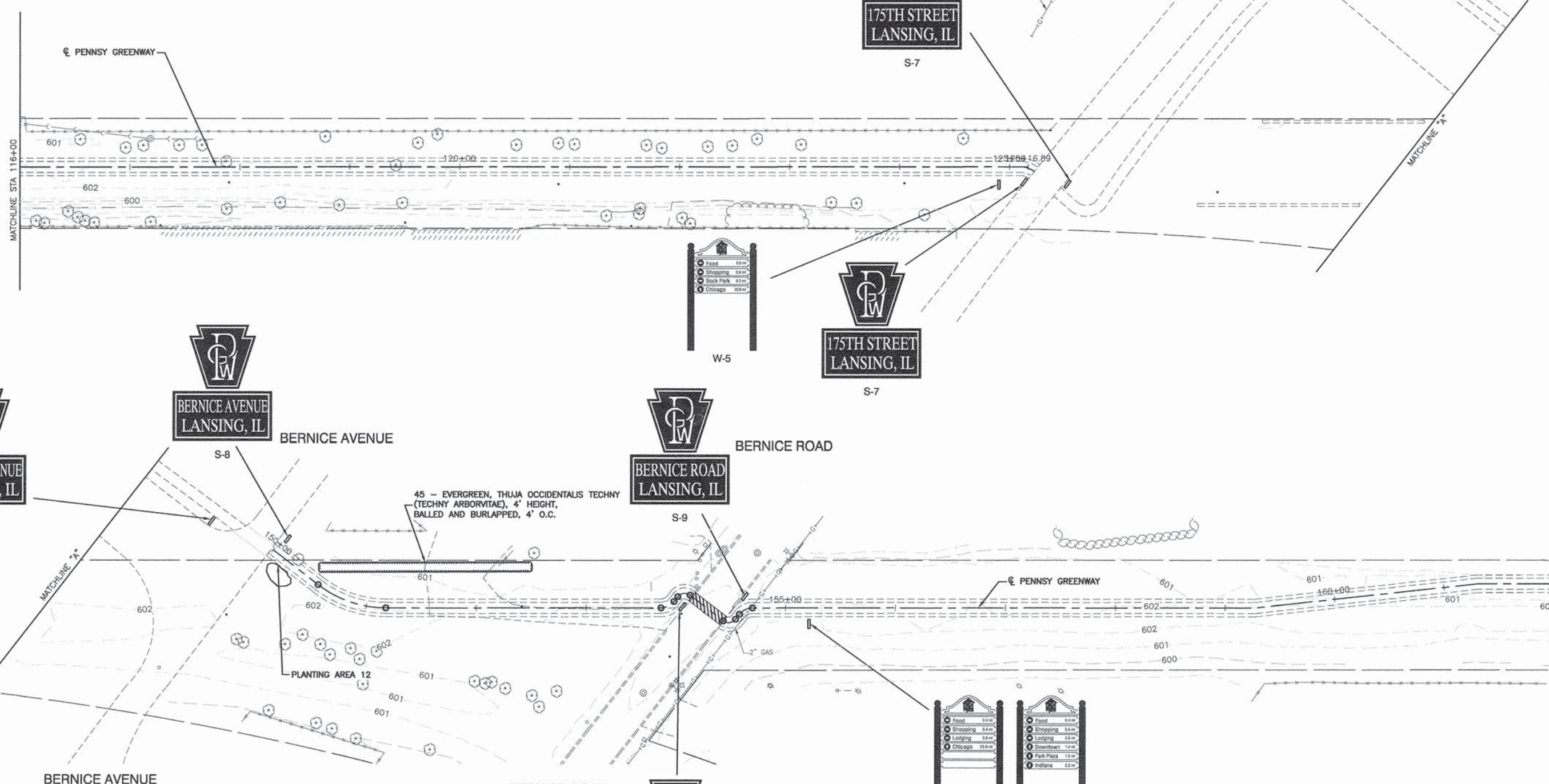
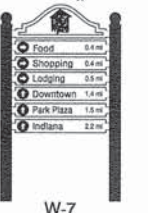
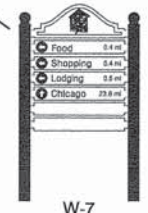
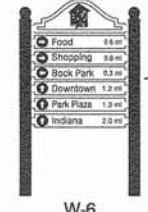
SECTION 30, TOWNSHIP 36, RANGE 15
 SECTION 31, TOWNSHIP 36, RANGE 15
 SECTION 32, TOWNSHIP 36, RANGE 15



NOTES:
 1. SIGN LOCATIONS SHOWN ARE APPROXIMATE. ACTUAL SIGN LOCATIONS SHALL BE APPROVED BY THE ENGINEER AS COORDINATED WITH THE LAN-OAK PARK DISTRICT PRIOR TO CONTRACTOR INSTALLATION.
 2. SIGNS S-1 THRU S-8 SHALL BE MOUNTED ON THE EXISTING BIKE PATH STOP SIGN POSTS.

FILE NAME = 06494-PLAN-01 - IDOT P3	USER NAME =	DESIGNED -- BWT	REVISIONS --	STATE OF ILLINOIS DEPARTMENT OF TRANSPORTATION	LAN-OAK PARK DISTRICT PENNSY GREENWAY SPUR BIKE PATH IMPROVEMENT PLANS			F.A. RTE.	SECTION	COUNTY	TOTAL SHEETS	SHEET NO.
	PLOT SCALE =	CHECKED -- JMN	REVISIONS --		SCALE: 1"=50'			06-P4045-02-SP	COOK	12	7	
	PLOT DATE = 05-14-15	DRAWN -- MD/RG	REVISIONS --		SHEET NO. 7 OF 12 SHEETS			CONTRACT NO. 61B32				
		CHECKED -- AG	REVISIONS --		STA. TO STA.			FED. ROAD DIST. NO. 1 ILLINOIS FED. AID PROJECT TE-00D1(783)				

SECTION 30, TOWNSHIP 36, RANGE 15
 SECTION 31, TOWNSHIP 36, RANGE 15
 SECTION 32, TOWNSHIP 36, RANGE 15



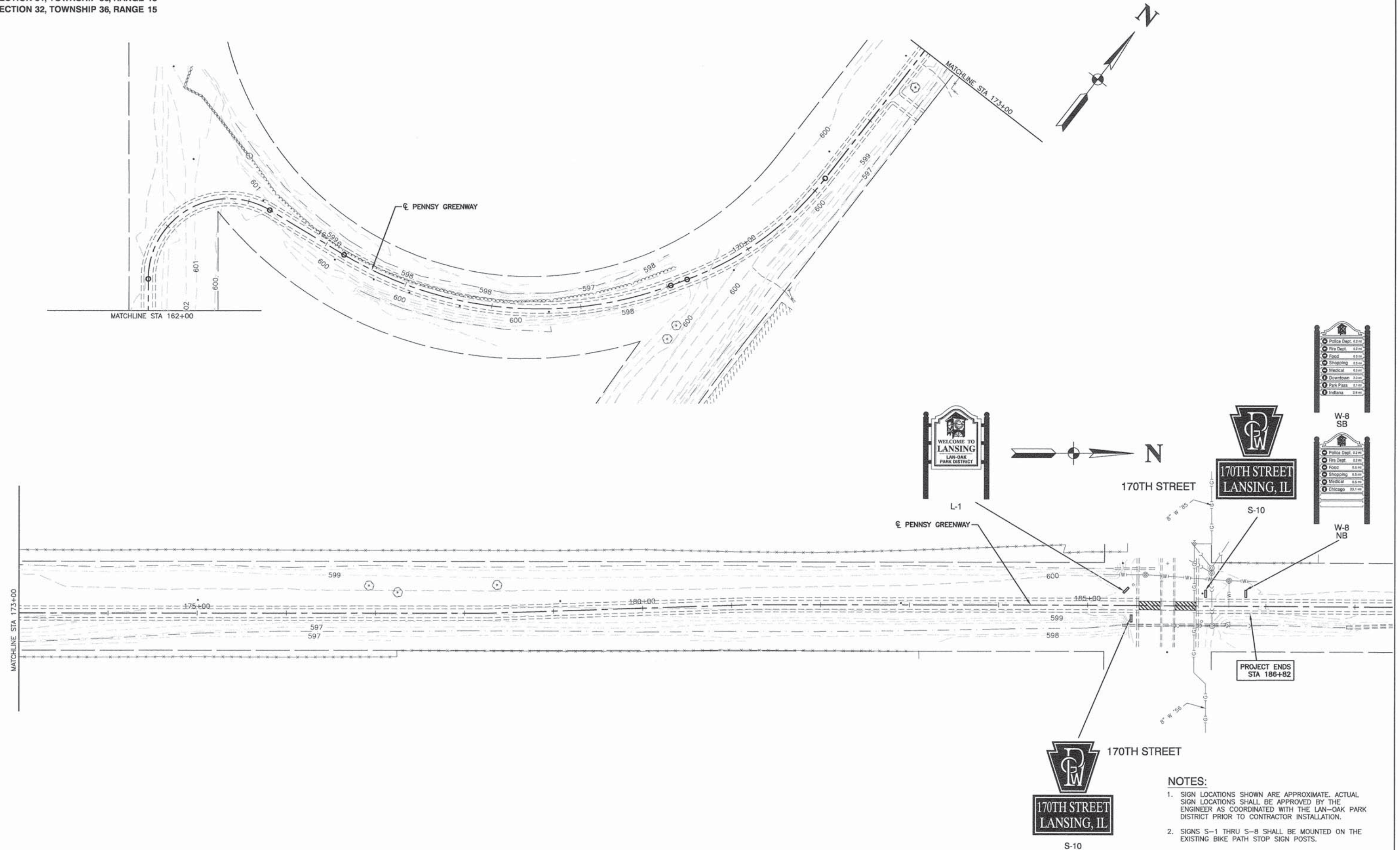
45 - EVERGREEN, THUJA OCCIDENTALIS TECHN
 (TECHNY ARBORVITAE), 4' HEIGHT,
 BALLED AND BURLAPPED, 4' O.C.

PLANTING AREA 12

- NOTES:**
- SIGN LOCATIONS SHOWN ARE APPROXIMATE. ACTUAL SIGN LOCATIONS SHALL BE APPROVED BY THE ENGINEER AS COORDINATED WITH THE LAN-OAK PARK DISTRICT PRIOR TO CONTRACTOR INSTALLATION.
 - SIGNS S-1 THRU S-8 SHALL BE MOUNTED ON THE EXISTING BIKE PATH STOP SIGN POSTS.

FILE NAME = 06494-PLAN-01 - IDOT P4	USER NAME =	DESIGNED -- BWT	REVISED --	STATE OF ILLINOIS DEPARTMENT OF TRANSPORTATION	LAN-OAK PARK DISTRICT PENNSY GREENWAY SPUR BIKE PATH IMPROVEMENT PLANS			F.A. RTE.	SECTION	COUNTY	TOTAL SHEETS	SHEET NO.	
	PLOT SCALE =	CHECKED -- JMN	REVISED --		SCALE: 1"=50'	SHEET NO. 8	OF 12 SHEETS	STA.	TO STA.	06-P4045-02-SP	COOK	12	8
	PLOT DATE = 05-14-15	DRAWN -- MD/RG	REVISED --										
		CHECKED -- AG	REVISED --										
								CONTRACT NO. 61B32		FED. ROAD DIST. NO. 1 ILLINOIS FED. AID PROJECT TE-00D1(783)			

SECTION 30, TOWNSHIP 36, RANGE 15
 SECTION 31, TOWNSHIP 36, RANGE 15
 SECTION 32, TOWNSHIP 36, RANGE 15



FILE NAME = 06494-PLAN-01 - IDOT.P5

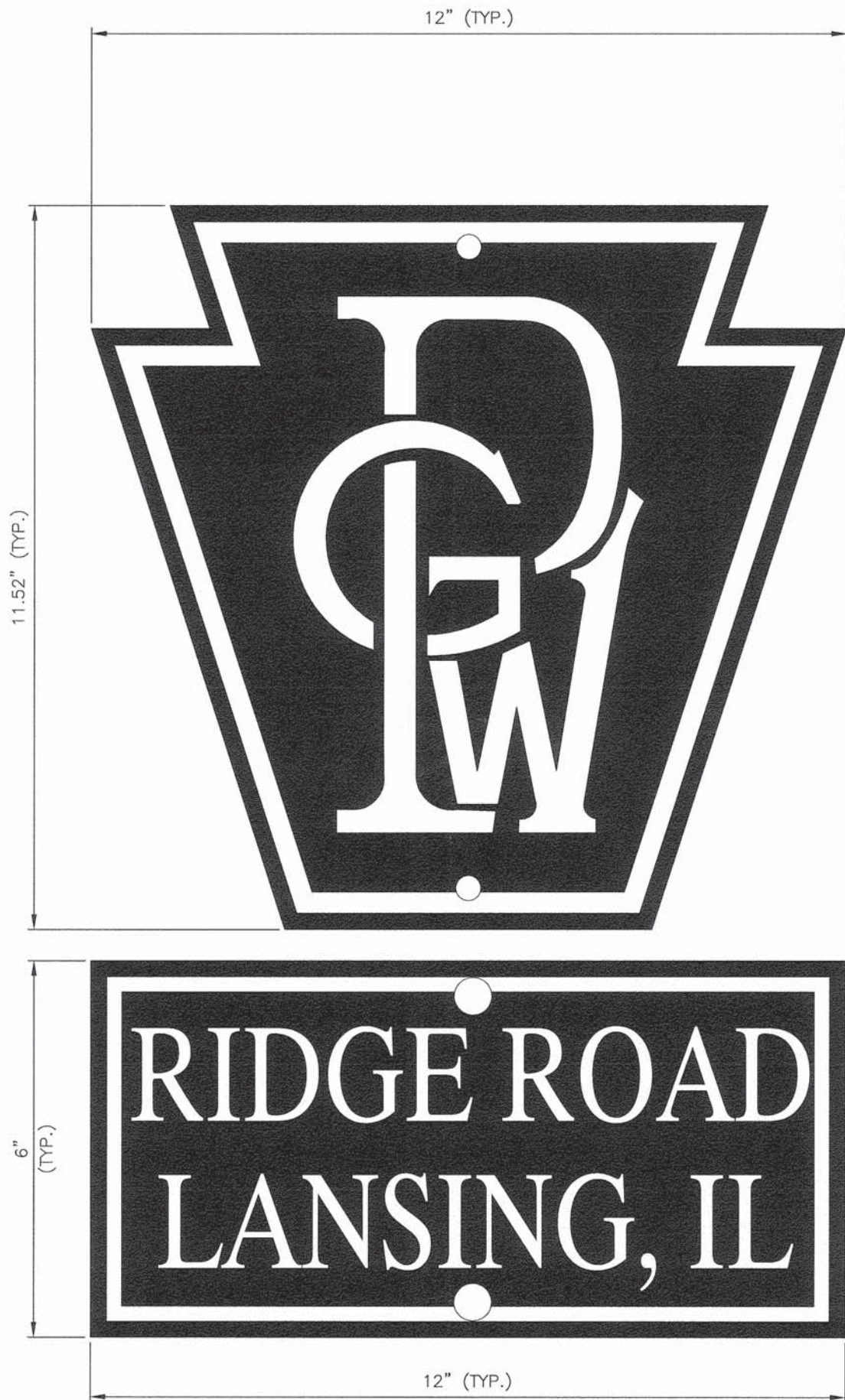
USER NAME =	DESIGNED -- BWT	REVISED --
	CHECKED -- JMN	REVISED --
PLOT SCALE =	DRAWN -- MD/RG	REVISED --
PLOT DATE = 05-14-15	CHECKED -- AG	REVISED --

STATE OF ILLINOIS
 DEPARTMENT OF TRANSPORTATION

LAN-OAK PARK DISTRICT
 PENNSY GREENWAY SPUR BIKE PATH
 IMPROVEMENT PLANS

SCALE: 1"=50'
 SHEET NO. 9 OF 12 SHEETS
 STA. TO STA.

F.A. RTE.	SECTION	COUNTY	TOTAL SHEETS	SHEET NO.
	06-P4045-02-SP	COOK	12	9
CONTRACT NO. 61B32				
FED. ROAD DIST. NO. 1 ILLINOIS FED. AID PROJECT TE-00D1(763)				



WENTWORTH AVENUE
LANSING, IL

S-1 (X2)

RIDGE ROAD
LANSING, IL

S-2 (X2)

ROY STREET
LANSING, IL

S-3 (X1)

BURNHAM AVENUE
LANSING, IL

S-4 (X2)

178TH STREET
LANSING, IL

S-5 (X2)

CHICAGO AVENUE
LANSING, IL

S-6 (X2)

175TH STREET
LANSING, IL

S-7 (X2)

BERNICE AVENUE
LANSING, IL

S-8 (X2)

BERNICE ROAD
LANSING, IL

S-9 (X2)

170TH STREET
LANSING, IL

S-10 (X2)

NOTE:

EACH PENNSY GREENWAY SIGN IS 0.71 SQ. FT. IN AREA
EACH STREET NAME SIGN IS 0.5 SQ. FT. IN AREA
PAID FOR AS SIGN PANEL, TYPE 1

FILE NAME = 06494-MISC-01 - P01

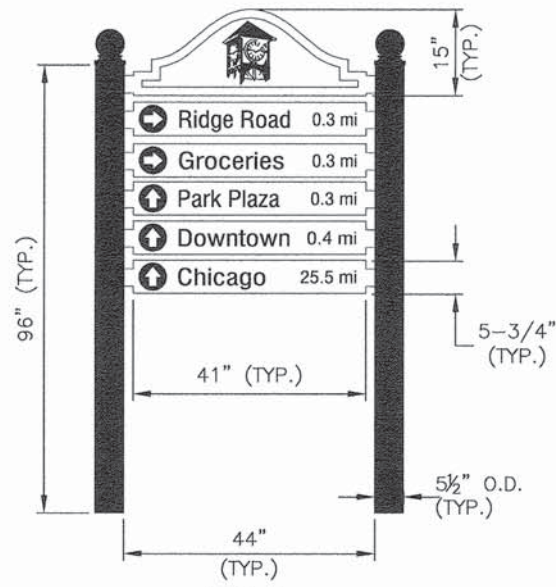
USER NAME =	DESIGNED -- BWT	REVISD --
	CHECKED -- JMN	REVISD --
PLOT SCALE =	DRAWN -- LTL/RG	REVISD --
PLOT DATE = 05-14-15	CHECKED -- AG	REVISD --

STATE OF ILLINOIS
DEPARTMENT OF TRANSPORTATION

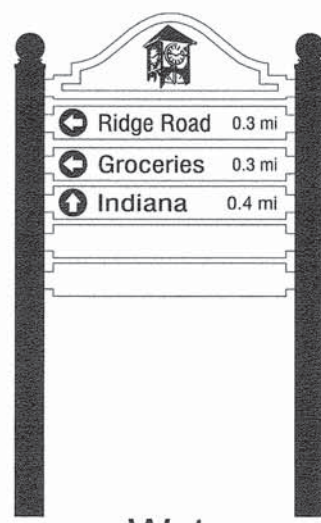
LAN-OAK PARK DISTRICT
PENNSY GREENWAY SPUR BIKE PATH
TRAIL SIGNAGE

F.A. RTE.	SECTION	COUNTY	TOTAL SHEETS	SHEET NO.
	06-P4045-02-SP	COOK	12	10
CONTRACT NO. 61B32				
FED. ROAD DIST. NO. 1 ILLINOIS FED. AID PROJECT TE-00D1(783)				

SCALE: NONE SHEET NO. 10 OF 12 SHEETS STA. TO STA.



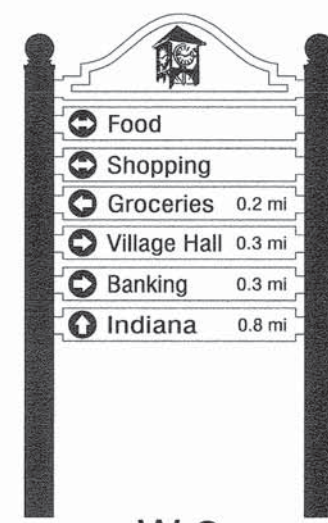
W-1
NB



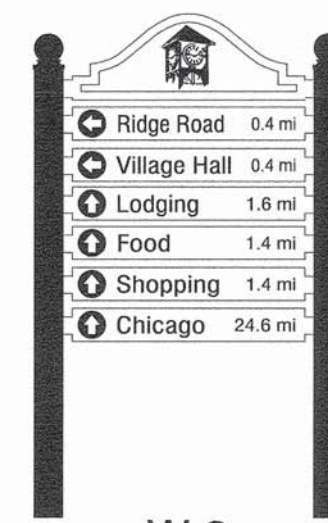
W-1
SB



W-2
NB



W-2
SB



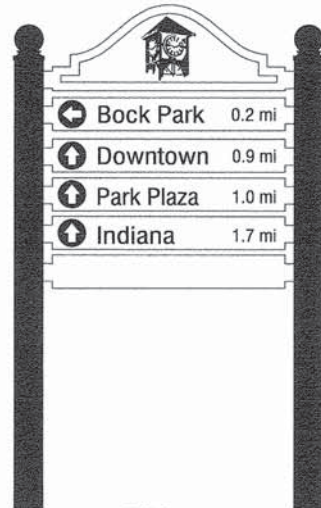
W-3
NB



W-3
SB



W-4
NB



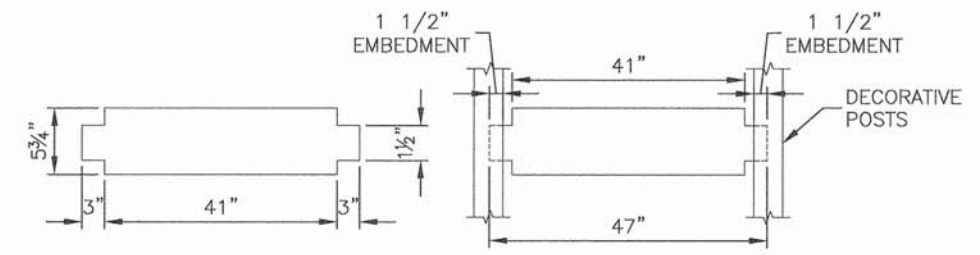
W-4
SB



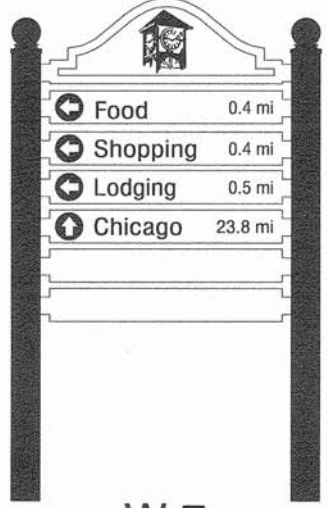
W-5



W-6



WAYFINDING SIGN PANEL DETAIL



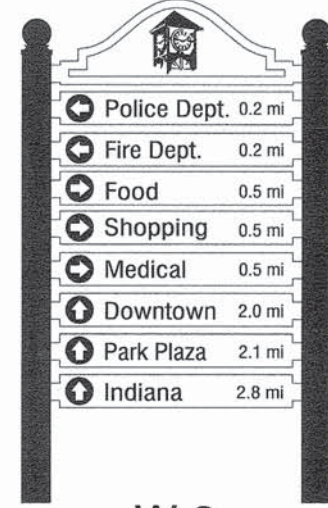
W-7
NB



W-7
SB

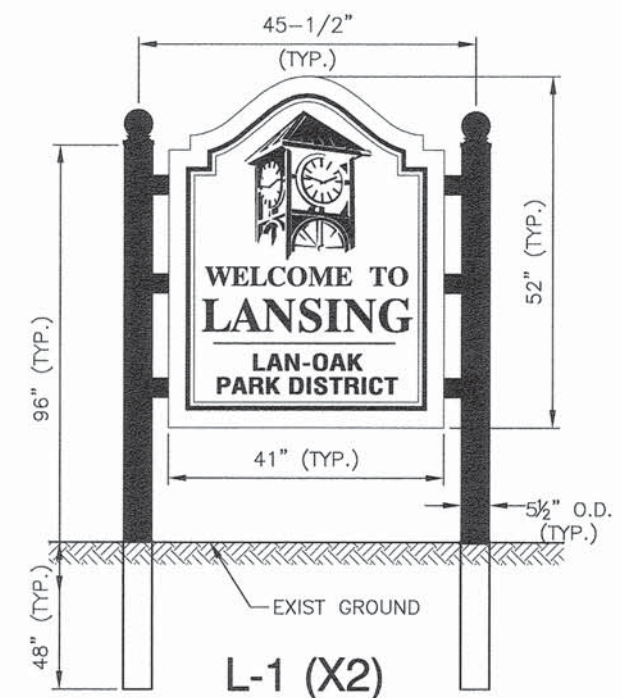


W-8
NB



W-8
SB

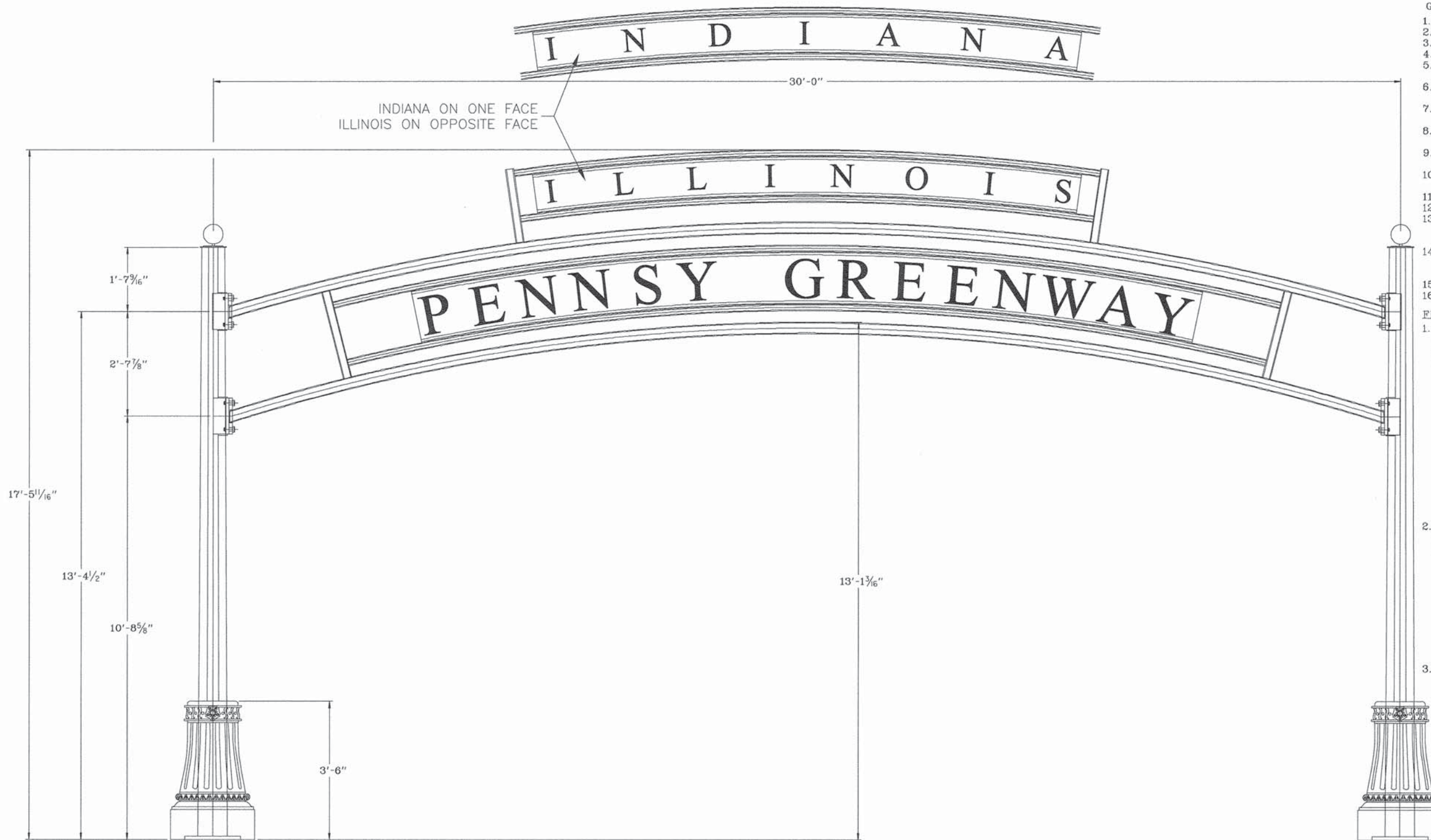
SIGN	TOTAL SIGN PANEL TYPE 1, SPECIAL
W-1 NB	11.3 SQ. FT.
W-1 SB	7.9 SQ. FT.
W-2 NB	13 SQ. FT.
W-2 SB	13 SQ. FT.
W-3 NB	13 SQ. FT.
W-3 SB	13 SQ. FT.
W-4 NB	11.3 SQ. FT.
W-4 SB	9.6 SQ. FT.
W-5	9.6 SQ. FT.
W-6	13 SQ. FT.
W-7 NB	9.6 SQ. FT.
W-7 SB	13 SQ. FT.
W-8 NB	13 SQ. FT.
W-8 SB	16.4 SQ. FT.



SIGN	TOTAL SIGN PANEL TYPE 2, SPECIAL
L-1	16.4 SQ. FT. EACH

NOTE:
ALL DECORATIVE POSTS SHALL BE 12' IN TOTAL LENGTH AND SHALL BE EMBEDDED IN EARTH 4'

USER NAME =	DESIGNED -- BWT	REVISIONS --
PLOT SCALE =	CHECKED -- JMN	REVISIONS --
PLOT DATE = 05-14-15	DRAWN -- LTL/RG	REVISIONS --
	CHECKED -- AG	REVISIONS --



- GENERAL NOTES:
1. COLUMN TUBES - ASTM 572 GRADE 50
 2. SQUARE TUBING - ASTM A500 GRADE B
 3. BASE PLATE - ASTM A572 GRADE 50
 4. ANCHORE & SETTING PLATES - ASTM A36 MIN.
 5. ANCHOR BOLTS - ASTM F-1554 GRADE 55 H.D. GALV. PER. ASTM 153
 6. ANCHOR NUTS - ASTM A563 GRADE DH OR A194 GRADE 2H H.D. GALV. PER. ASTM A153
 7. ANCHOR WASHERS - ASTM F436 TYPE 1 H.D. GALV. PER. ASTM 153
 8. FLANGE AND GUSSET PLATES - ASTM A572 GRADE 50
 9. FLANGE BOLTS - ASTM A325 H.D. GALV. PER. ASTM 153
 10. FLANGE WASHERS - ASTM F436 H.D. GALV. PER. ASTM 153
 11. STRUCTURAL SHAPES - ASTM A36 MIN.
 12. SIGN PANELS - ASTM A36 MIN.
 13. SIGN CONNECTION HARDWARE - ASTM 307 OR AISI 300 SERIES STAINLESS STEEL WITH BLACK OXIDE FINISH.
 14. MISC. HARDWARE - ASTM 307 OR AISI 300 SERIES STAINLESS STEEL UNLESS OTHERWISE NOTED.
 15. MISC. PLATES - ASTM A36 MIN.
 16. WELDING - AWS D1.1

- FINISH NOTES:
1. STRUCTURAL STEEL
H.G. GALV. PER ASTM A123 THEN POWDER COAT FINISH, MATTE BLACK, PER. FEDERAL SPECIFICATION TT-E-489, AS FOLLOWS:
A. H.D. GALVANIZE PER. ASTM A123.
B. PRE-CLEAN ALL GALVANIZED SURFACE CONTAMINATION WITH SOLVENT.
C. REMOVE SURFACE OXIDATION WITH A LIGHT SWEEP BLAST PER. SSPC SP-7 FOR GOOD ADHESION.
D. PRE-BAKE BLASTED SURFACES IN A DRYING OVEN AT 55°F HIGHER THAN THE RECOMMENDED CURING TEMPERATURE, NOT TO EXCEED 535°F.
E. APPLY TGIC POLYESTER, PPG OR EQUAL, 3-5 MILLS DRY FILM THICKNESS (DFT)
F. PACKAGE FOR PROTECTION FROM HANDLING DAMAGE.
 2. SIGN PANELS
POWDER COAT FINISH, SILVER, AS FOLLOWS:
(COLOR CHIP TO BE SUBMITTED FOR APPROVAL)
A. CLEAN SURFACES WITH A COMMERCIAL BLAST PER. SSPC SP-6 FOR GOOD ADHESION.
B. PRE-BAKE BLASTED SURFACES IN A DRYING OVEN AT 55°F HIGHER THAN THE RECOMMENDED CURING TEMPERATURE, NOT TO EXCEED 535°F.
C. APPLY TGIC POLYESTER, PPG OR EQUAL, 3-5 MILLS DRY FILM THICKNESS (DFT)
D. PACKAGE FOR PROTECTION FROM HANDLING DAMAGE.
 3. SIGN LETTERING SHALL BE BLACK.

ELEVATION

STRUCTURE IS SYMMETRICAL AND COLUMN DETAILS ARE TYPICAL

STATION 10+29.29

STATE OF ILLINOIS
DEPARTMENT OF TRANSPORTATION

LAN-OAK PARK DISTRICT
PENNSY GREENWAY SPUR BIKE PATH
ENTRANCE SIGN DETAIL

F.A. RTE.	SECTION	COUNTY	TOTAL SHEETS	SHEET NO.
	06-P4045-02-SP	COOK	12	12
CONTRACT NO. 61B32				
FED. ROAD DIST. NO. 1 ILLINOIS FED. AID PROJECT TE-00D1(783)				

FILE NAME = 06494-DTUS-02 - DTLS01

USER NAME =	DESIGNED -- BWT	REVISD --
	CHECKED -- JMN	REVISD --
PLOT SCALE =	DRAWN -- RG	REVISD --
PLOT DATE = 05-14-15	CHECKED -- AG	REVISD --

SCALE: NONE SHEET NO. 12 OF 12 SHEETS STA. TO STA.