

F.A.I. RTE.	SECTION	COUNTY	TOTAL SHEETS	SHEET NO.
57	VARIOUS	KANKAKEE	5	1
ILLINOIS			CONTRACT NO. 66984	

### INDEX OF SHEET

1. COVER SHEET
2. GENERAL NOTES
3. SUMMARY OF QUANTITIES
4. TYPICALS SECTION
5. TYPICAL PAVEMENT MARKING

### STANDARDS

- |           |  |
|-----------|--|
| 000001-05 | STANDARD SYMBOLS, ABBREVIATIONS AND PATTERNS                                       |
| 701101-02 | OFF-ROAD OPERATIONS MULTILANE, 15' (4.5 m) TO 24" (600 mm) FROM PAVEMENT EDGE      |
| 701106-02 | OFF-ROAD OPERATIONS, MULTILANE, MORE THAN 15' (4.5 m) AWAY                         |
| 701400-03 | APPROACH TO LANE CLOSURE, FREEWAY/EXPRESSWAY                                       |
| 701401-05 | LANE CLOSURE, FREEWAY/EXPRESSWAY   |
| 701426-03 | LANE CLOSURE, MULTILANE, INTERMITTENT OR MOVING OPERATIONS FOR FOR SPEEDS ≥ 45 MPH |
| 701411-05 | LANE CLOSURE, MULTILANE, AT ENTRANCE OR EXIT RAMP FOR SPEEDS ≥ 45 MPH              |
| 701901-01 | TRAFFIC CONTROL DEVICES  |

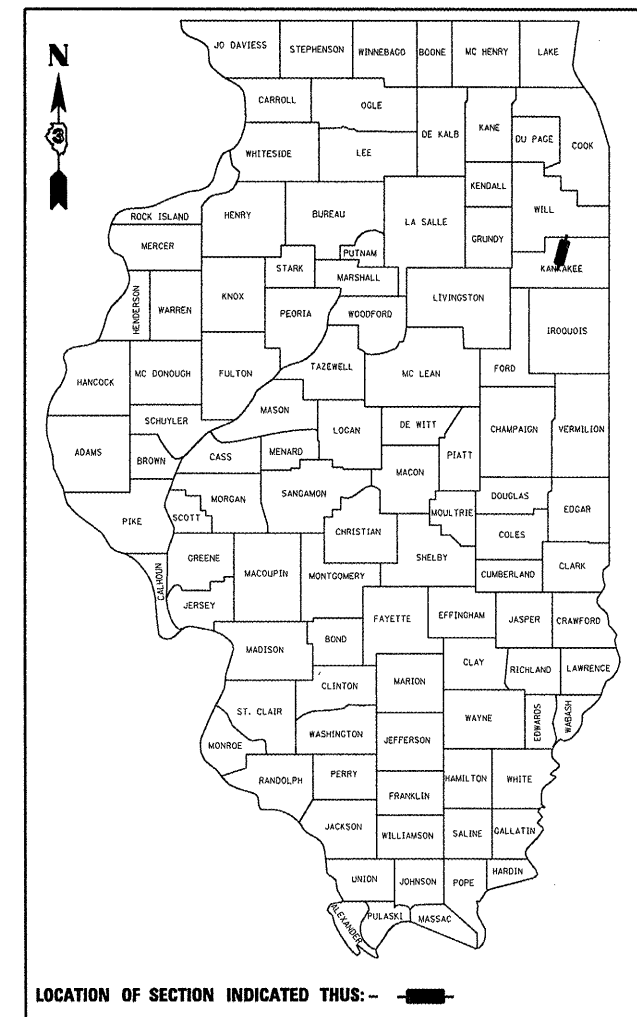
# STATE OF ILLINOIS DEPARTMENT OF TRANSPORTATION DIVISION OF HIGHWAYS PROPOSED HIGHWAY PLANS

**FAI ROUTE 57 (I-57)  
SECTION VARIOUS**

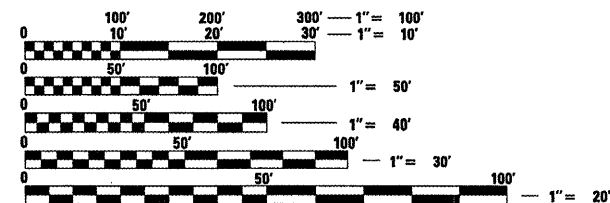
**TYPE OF IMPROVEMENT  
INTERMITTENT MICRO-SURFACING  
(JOINT REPAIR)  
KANKAKEE COUNTY**

**C-93-163-09**

D-93-002-09



FUNCTIONAL CLASSIFICATION  
URBAN/RURAL - INTERSTATE  
F.A.I. ROUTE 57  
2007 ADT = 27400  
P.V = 77.1% M.U. = 18.2% S.U. = 4.7%



FULL SIZE PLANS HAVE BEEN PREPARED USING STANDARD ENGINEERING SCALES. REDUCED SIZED PLANS WILL NOT CONFORM TO STANDARD SCALES. IN MAKING MEASUREMENTS ON REDUCED PLANS, THE ABOVE SCALES MAY BE USED.

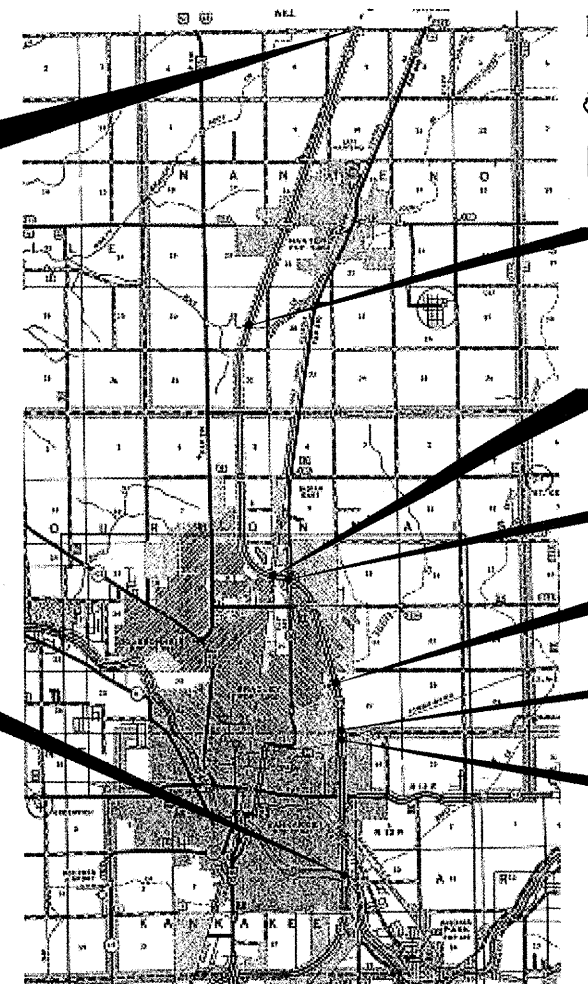
J.U.L.I.E.  
JOINT UTILITY LOCATION INFORMATION FOR EXCAVATION  
1-800-892-0123  
OR 811

**PROJECT ENGINEER: JOE KANNEL  
PROJECT MANAGER: RON WOODSHANK  
TOWNSHIP: MANTENO, BOURBONNAIS, KANKAKEE**

**CONTRACT NO. 66984**

**END PROJECT  
WILL COUNTY LINE  
(M.P. 325.04)**

**BEGIN PROJECT  
KANKAKEE RIVER  
(M.P. 310.41)**



**BRIDGE OMISSION**  
M.P. 320.00  
SN 046-0019 NB  
SN 046-0018 SB

**BRIDGE OMISSION**  
M.P. 315.75  
SN 046-0017 NB  
SN 046-0016 SB

**BRIDGE OMISSION**  
M.P. 315.48  
SN 046-0015 NB  
SN 046-0014 SB

**BRIDGE OMISSION**  
M.P. 313.65  
SN 046-0013 NB  
SN 046-0012 SB

**BRIDGE OMISSION**  
M.P. 312.80  
SN 046-0010 NB  
SN 046-0011 SB

**BRIDGE OMISSION**  
M.P. 312.69  
SN 046-0008 NB  
SN 046-0009 SB

GROSS LENGTH = 77299 FT. = 14.64 MILE  
NET LENGTH = 76401 FT. = 14.46 MILE

STATE OF ILLINOIS  
DEPARTMENT OF TRANSPORTATION  
DIVISION OF HIGHWAYS

SUBMITTED *June 23, 2009*  
*James Rayson*  
DEPUTY DIRECTOR OF HIGHWAYS, REGION ENGINEER

*June 26, 2009*  
*Charles J. Ingersoll*  
ENGINEER OF DESIGN AND ENVIRONMENT

*June 26, 2009*  
*Christine M. Reed*  
DIRECTOR OF HIGHWAYS, CHIEF ENGINEER

**PRINTED BY THE AUTHORITY  
OF THE STATE OF ILLINOIS**

**GENERAL NOTES**

PLAN DIMENSIONS AND DETAILS RELATIVE TO THE EXISTING PLANS ARE SUBJECT TO ROUTINE VARIATIONS. THE CONTRACTOR SHALL FIELD VERIFY EXISTING DIMENSIONS AND DETAILS AFFECTING NEW CONSTRUCTION AND MAKE NECESSARY APPROVED ADJUSTMENTS PRIOR TO CONSTRUCTION OR ORDERING OF MATERIALS. SUCH VARIATIONS SHALL NOT BE CAUSE FOR ADDITIONAL COMPENSATION FOR A CHANGE IN THE SCOPE OF THE WORK. HOWEVER, THE CONTRACTOR WILL BE PAID FOR THE QUANTITY FURNISHED BASED UPON THE UNIT BID PRICE FOR THE WORK.

THE CONTRACTOR SHALL BE RESPONSIBLE FOR PROTECTING UTILITY PROPERTY FROM CONSTRUCTION OPERATIONS AS OUTLINED IN ARTICLE 107.31 OF THE STANDARD SPECIFICATIONS. THE "JULIE" NUMBER IS 1-800-892-0123. A MINIMUM OF FORTY-EIGHT (48) HOURS ADVANCE NOTICE IS REQUIRED.

THE COST OF ANY SAW CUTS MADE TO COMPLETE THE WORK AS DESCRIBED IN PLAN DETAILS, UNLESS OTHERWISE NOTED SHALL NOT BE PAID FOR SEPARATELY BUT SHALL BE INCLUDED WITH THE VARIOUS PAY REMOVAL PAY ITEMS INVOLVED.

ENGLISH UNITS OF MEASUREMENT SHALL GOVERN OVER AND SUPERSEDE ANY METRIC UNITS SHOWN ON THE PLANS. METRIC UNITS ARE FOR INFORMATION ONLY.

THE ENGINEER WILL BE THE SOLE JUDGE CONCERNING CURING TIME FOR MICRO-SURFACING, SINGLE

SHORT TERM PAVEMENT MARKING SHALL BE USED TO OUTLINE EXIT AND ENTRANCE RAMPS FOR THE PRIME COAT APPLICATION AND EACH RESURFACING LIFT.

ON EXISTING PAVEMENT WHICH MAY BE SUPERELEVATED, THE NEW HMA PAVEMENT SHALL BE BUILT WITH THE SAME SUPERELEVATION UNLESS NEW SUPERELEVATION RATES ARE GIVEN ON THE PLANS.

ANY REFERENCE TO A STANDARD IN THESE PLANS SHALL BE INTERPRETED TO MEAN THE EDITION AS INDICATED BY THE SUBNUMBER SHOWN IN THE LIST OF STANDARDS OR THE COPY INCLUDED IN THESE PLANS.

THE FOLLOWING RATES OF APPLICATION HAVE BEEN USED IN CALCULATING PLAN QUANTITIES:

BITUMINOUS MATERIALS (PRIME COAT)	0.08	GAL / SQ YD
SHORT TERM PAVEMENT MARKING	10	FT /100 FT OF APPLICATION
MIX FOR CRACKS, JTS & FLGWYS	0.0003	TONS / SQ YD
MICRO-SURFACING, SINGLE PASS	20	LBS / SQ YD

DATE: 6/23/09

PREPARED BY: [Signature]  
DISTRICT STUDIES & PLANS ENGINEER

EXAMINED BY: Herbert K. Long  
DISTRICT CONSTRUCTION ENGINEER

[Signature]  
DISTRICT MATERIALS ENGINEER

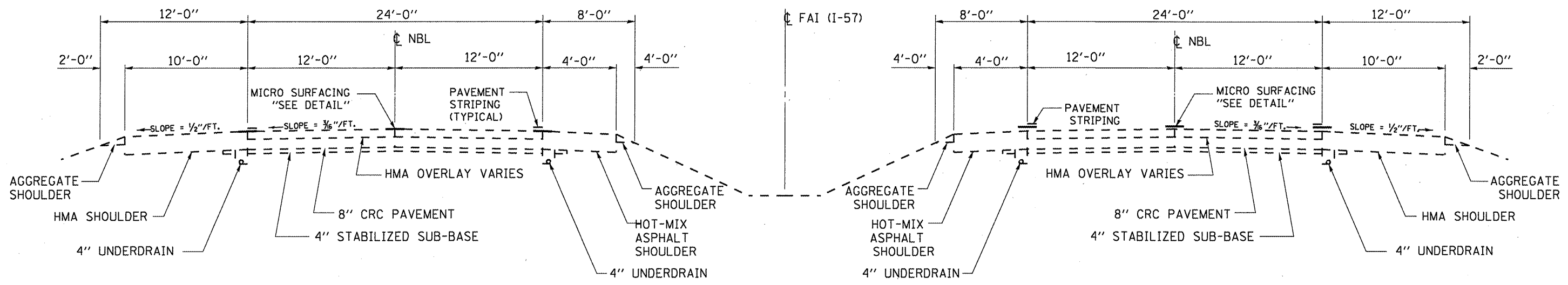
[Signature]  
DISTRICT OPERATIONS ENGINEER

# SUMMARY OF QUANTITIES

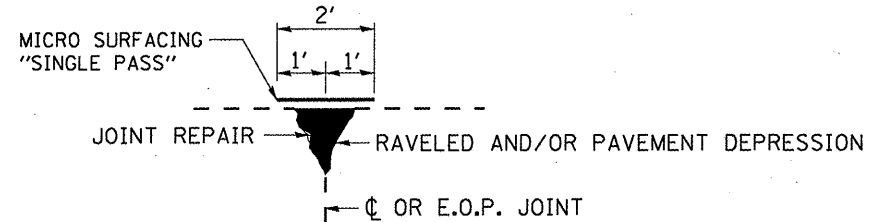
CONSTRUCTION CODE TYPE: F000

CODE NO.	ITEM	UNIT	TOTAL QUANTITY	100% URBAN	STATE RURAL
40600100	BITUMINOUS MATERIALS (PRIME COAT)	GALLON	5461	4057	1404
40600400	MIXTURE FOR CRACKS, JOINTS, AND FLANGEWAYS	TON	89	66	23
67100100	MOBILIZATION	L SUM	1	0.75	0.25
70100420	TRAFFIC CONTROL AND PROTECTION, STANDARD 701411	EACH	12	12	
70100800	TRAFFIC CONTROL AND PROTECTION, STANDARD 701401	L SUM	1	0.75	0.25
70300100	SHORT-TERM PAVEMENT MARKING	FOOT	61438	45640	15798
78003130	PREFORMED PLASTIC PAVEMENT MARKING, TYPE B - LINE 6"	FOOT	77266	57466	19800
* 78005110	EPOXY PAVEMENT MARKING - LINE 4"	FOOT	154600	115000	39600
* 78005140	EPOXY PAVEMENT MARKING - LINE 8"	FOOT	12000	8000	4000
* 78005170	EPOXY PAVEMENT MARKING - LINE 18"	FOOT	72	72	
78300100	PAVEMENT MARKING REMOVAL	SQ FT	97799	72151	25648
78300200	RAISED REFLECTIVE PAVEMENT MARKER REMOVAL	EACH	1290	960	330
X0325702	NIGHTTIME WORKZONE LIGHTING	L SUM	1	0.75	0.25
X0326221	MICRO-SURFACING, SINGLE PASS, TYPE II	SQ YD	68264	50712	17552

\* SPECIALTY ITEM



**TYPICAL SECTION**



**MICRO-SURFACING DETAIL**

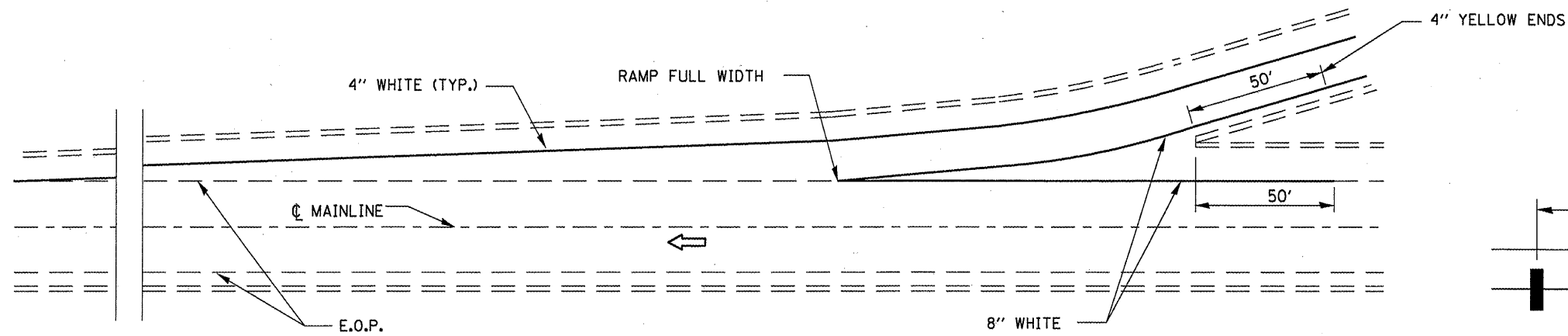
**NOTES**

- 1). LOCATIONS OF MICRO-SURFACING SHALL BE LOCATED AT THE CENTERLINE OF PAVEMENT JOINT OR A COMBINATION OF THE CENTERLINE OF PAVEMENT JOINT AND/OR EDGE OF PAVEMENT JOINTS. ACTUAL LOCATIONS SHALL BE FIELD DETERMINED BY THE ENGINEER PRIOR TO THE CONTRACTOR BEGINNING HIS/HER CONSTRUCTION OPERATIONS.
- 2). OFFSET OF THE CENTERLINE PAVEMENT STRIPING SHALL BE FIELD DETERMINED BY THE ENGINEER.

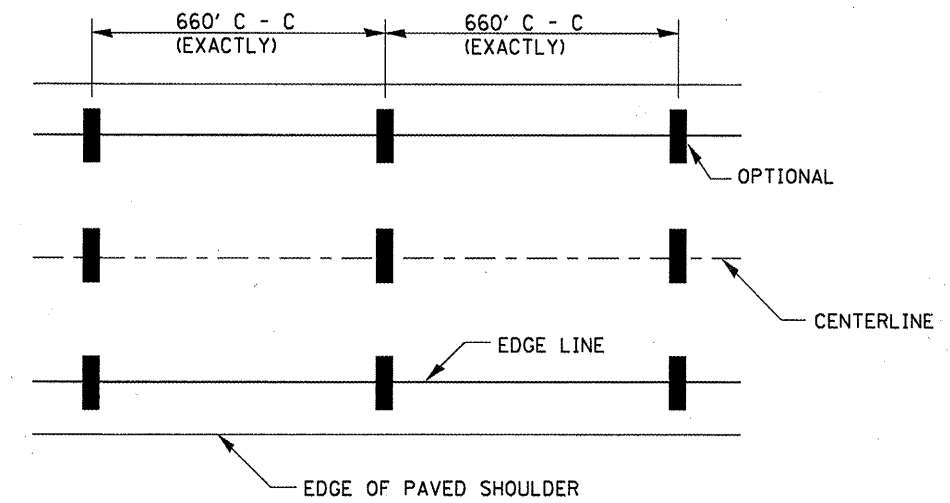
**MICRO-SURFACING OMISSIONS**

M.P. 312.67 TO M.P. 312.71	SN 046-0008 NB & SN 046-0009 SB
M.P. 312.79 TO M.P. 312.81	SN 046-0010 NB & SN 046-0011 SB
M.P. 313.64 TO M.P. 313.65	SN 046-0013 NB & SN 046-0012 SB
M.P. 315.46 TO M.P. 315.50	SN 046-0015 NB & SN 046-0014 SB
M.P. 315.73 TO M.P. 315.77	SN 046-0017 NB & SN 046-0016 SB
M.P. 319.99 TO M.P. 320.01	SN 046-0019 NB & SN 046-0018 SB

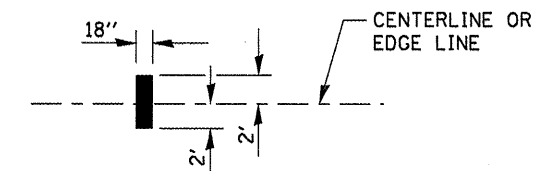
FILE NAME =	USER NAME = woodshankr1	DESIGNED - RON WOODSHANK	REVISED -	<b>STATE OF ILLINOIS DEPARTMENT OF TRANSPORTATION</b>	<b>TYPICALS</b>	F.A.I. RTE.	SECTION	COUNTY	TOTAL SHEETS	SHEET NO.	
as:\pwork\PIWIDOT\WOODSHANKR1\dms91650	D366984.dgn	DRAWN - RON WOODSHANK	REVISED -			57	VARIOUS	KANKAKEE	5	4	
PLOT SCALE = 1/8" = 1' IN.	CHECKED -	REVISOR -	REVISOR -			<b>CONTRACT NO. 66984</b>					
PLOT DATE = Jun 23, 2009 - 09:17:29 AM	DATE -	REVISOR -	REVISOR -			ILLINOIS					
SCALE: _____ SHEET NO. 1 OF 1 SHEETS STA. _____ TO STA. _____											



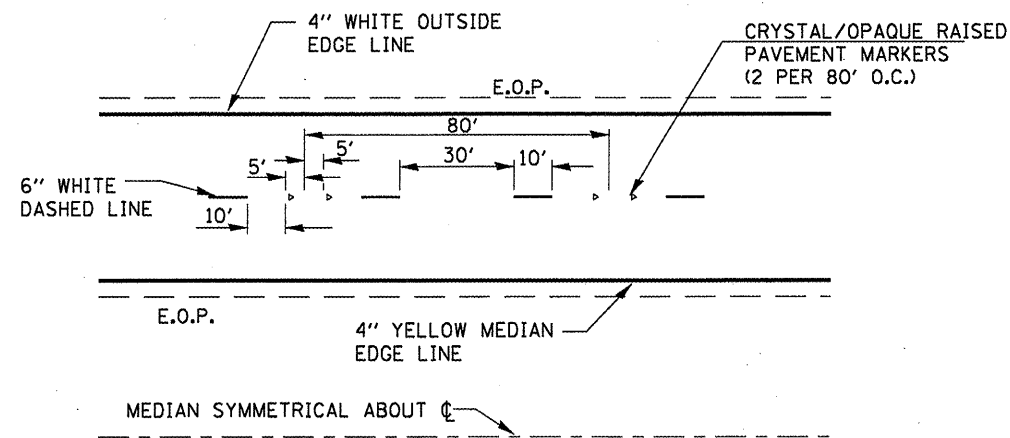
**TYPICAL PAVEMENT MARKING FOR ENTRANCE RAMP TERMINALS**



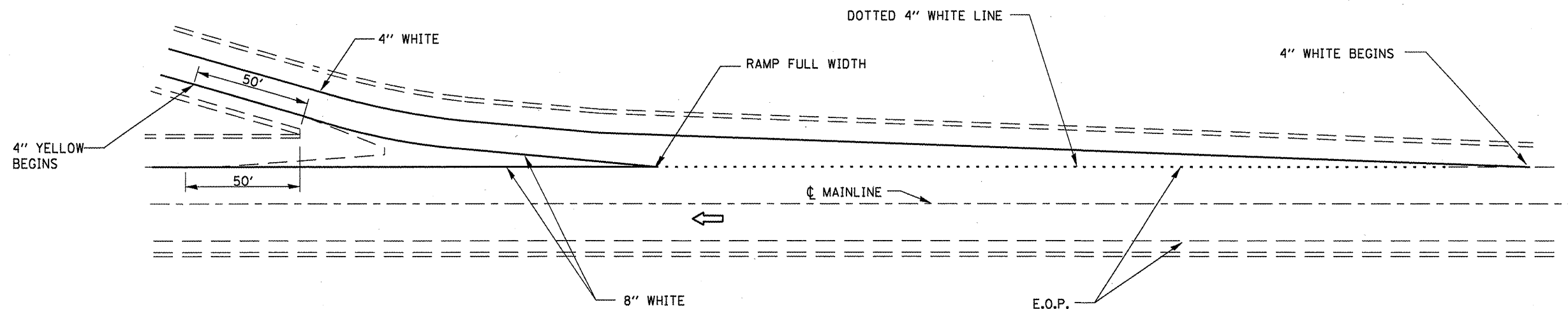
IT WILL BE NECESSARY TO HAVE A REPRESENTATIVE OF THE STATE POLICE PRESENT SO THAT THE ACCURACY OF MEASUREMENT CAN BE ATTESTED TO IN COURT.



**AERIAL SPEED CHECK ZONES**



**TYPICAL PAVEMENT MARKINGS**



**TYPICAL PAVEMENT MARKINGS FOR EXIT RAMP TERMINALS**

FILE NAME =	USER NAME = woodshankr1	DESIGNED - RON WOODSHANK	REVISED -
ca:\pav_work\PMWIDOT\WOODSHANKR1\dms91650	D366984.dgn	DRAWN - RON WOODSHANK	REVISED -
	PLOT SCALE = 100.0000' / IN.	CHECKED -	REVISED -
	PLOT DATE = Jun 19, 2009 - 11:01:45 AM	DATE -	REVISED -

STATE OF ILLINOIS  
DEPARTMENT OF TRANSPORTATION

**TYPICAL PAVEMENT MARKING**

SCALE: SHEET NO. 1 OF 1 SHEETS STA. TO STA.

F.A.I. RTE. 57	SECTION VARIOUS	COUNTY KANKAKEE	TOTAL SHEETS 5	SHEET NO. 5
CONTRACT NO. 66984				
ILLINOIS				