

FOR INDEX OF SHEETS, SEE SHEET NO. 3

FOR SUMMARY OF QUANTITIES, SEE SHEET NO. 4-6

STATE OF ILLINOIS  
DEPARTMENT OF TRANSPORTATION

SBI RATE	SECTION	COUNTY	TOTAL SHEETS	SHEET NO
147	120RS-8	PULASKI	16	1
		ILLINOIS	CONTRACT NO. 78886	

**TRAFFIC DATA**

W CEDAR STREET  
ROADWAY CLASSIFICATION = LOCAL  
DESIGN SPEED = 35 MPH  
CURRENT ADT (2018) = 700  
DESIGN YEAR ADT (2040) = 780  
SU = 2.9%  
MU = 0.4%

**PROPOSED  
HIGHWAY PLANS**

SBI ROUTE 147 (W CEDAR ST)  
SECTION 120RS-8  
RESURFACING  
PULASKI COUNTY

C-99-086-21



**TOWNSHIPS**

OHIO



**OATES ASSOCIATES**  
ILLINOIS DESIGN FIRM LICENSE NO. 184.001115

Collinsville 100 Lanter Court, Suite 1 Collinsville, IL 62234 618.345.2200	St. Louis 720 Olive, Suite 700 St. Louis, MO 63101 314.588.8381
Belleville 20 East Main Street Belleville, IL 62200 618.416.4668 www.oatesassociates.com	St. Charles 330 North Main, Suite 201 St. Charles, MO 63301 636.493.6277

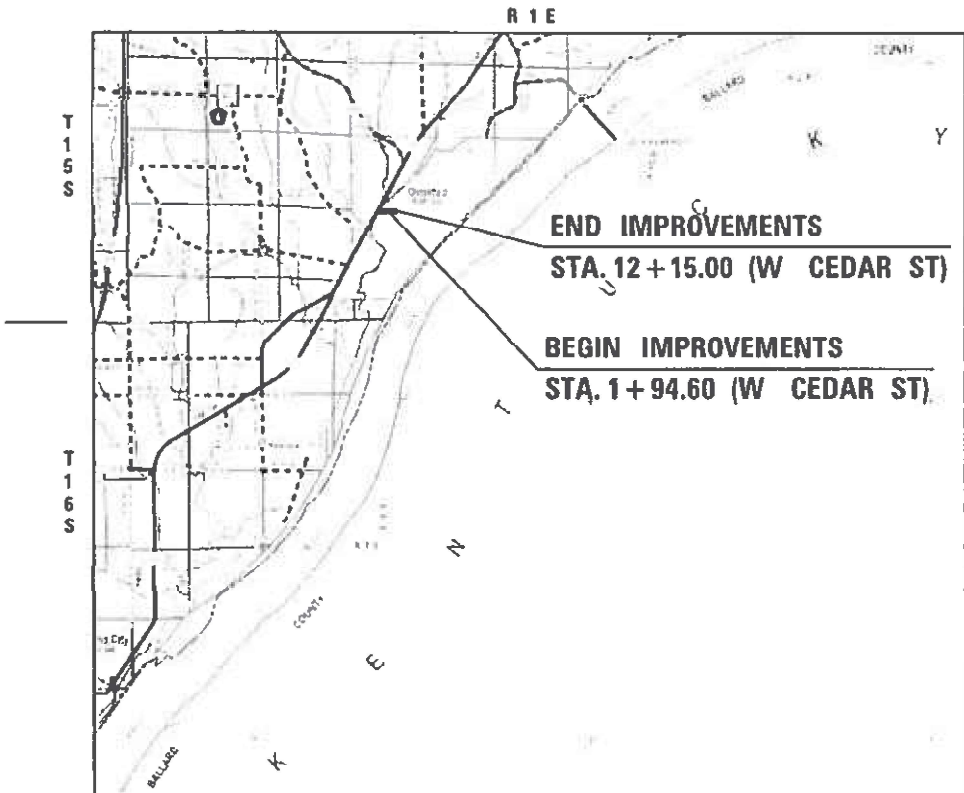
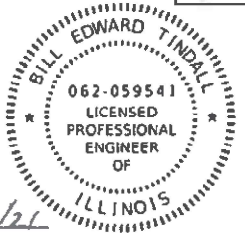
DESIGN DESIGNATION : N/A  
COORDINATE SYSTEM : N/A  
POSTED SPEED : 30 MPH

J.U.L.I.E.  
JOINT UTILITY LOCATION INFORMATION FOR EXCAVATION  
1-800-892-0123  
OR 811

PROJECT ENGINEER: SUSAN POE

CONTRACT NO. 78886

*Bill Tindall*  
BILL TINDALL, P.E.  
License Expires 11/30/2021  
Date 4/30/21



GROSS LENGTH = 1,020 FT (0.193 MILE)  
NET LENGTH = 1,020 FT (0.193 MILE)

STATE OF ILLINOIS  
DEPARTMENT OF TRANSPORTATION

SUBMITTED 05-06-2021  
*[Signature]*  
REGION FIVE ENGINEER

June 25, 2021  
*[Signature]*  
ENGINEER OF DESIGN AND ENVIRONMENT

June 25, 2021  
*[Signature]*  
DIRECTOR OF HIGHWAYS PROJECT IMPLEMENTATION 13

PRINTED BY THE AUTHORITY  
OF THE STATE OF ILLINOIS

Prepared By: Charles Stein  
DISTRICT STUDIES & PLANS ENGINEER

Examined By: Nancy Lee  
DISTRICT LAND ACQUISITION ENGINEER

Examined By: Cam Nelson  
DISTRICT PROGRAM DEVELOPMENT ENGINEER

Examined By: Keel Maly  
DISTRICT OPERATIONS ENGINEER

Examined By: [Signature]  
DISTRICT PROJECT IMPLEMENTATION ENGINEER

Examined By: Daryl J. Hubert  
DISTRICT CONSTRUCTION ENGINEER

Examined By: [Signature]  
DISTRICT MATERIALS ENGINEER

MODEL: D:\MAIL - RVP\220088 - IDOT.PTB.196 Item 61.220088.015 - Onsite\Proj\Asm\K1400\Map\CADD Drawings\Sub-signatures.dgn



USER NAME = r.v.n.w.p.08	DESIGNED -	REVISED -
PLOT SCALE = 2.0000' / in.	DRAWN -	REVISED -
PLOT DATE = 4/29/2021	CHECKED -	REVISED -
	DATE -	REVISED -

STATE OF ILLINOIS  
DEPARTMENT OF TRANSPORTATION

SIGNATURE SHEET

SCALE: SHEET OF SHEETS STA. TO STA.

S.B.I. RTE. 147	SECTION 120RS-8	COUNTY PULASKI	TOTAL SHEETS 16	SHEET NO. 2
CONTRACT NO. 78886				
ILLINOIS FED. / ID PROJECT				

## INDEX OF SHEETS

1	COVER SHEET
2	SIGNATURE SHEET
3	GENERAL NOTES & HIGHWAY STANDARDS
4-6	SUMMARY OF QUANTITIES
7	TYPICAL SECTIONS
8	SCHEDULES
9	GUARDRAIL SHEET
10	STEEL RAILING, TYPE 2399
11-16	CONSTRUCTION DETAILS

## HIGHWAY STANDARDS

000001-08	STANDARD SYMBOLS, ABBREVIATIONS AND PATTERNS
001001-02	AREAS OF REINFORCEMENT BARS
001006	DECIMAL OF AN INCH AND OF A FOOT
515001-04	NAME PLATE FOR BRIDGES
630001-12	STEEL PLATE BEAM GUARDRAIL
630301-09	SHOULDER WIDENING FOR TYPE 1 (SPECIAL) GUARDRAIL TERMINALS
631032-09	TRAFFIC BARRIER TERMINAL, TYPE 6A
701006-05	OFF-RD OPERATIONS, 2L, 2W, 15' TO 24" FROM PAVEMENT EDGE
701011-04	OFF-RD MOVING OPERATIONS, 2L, 2W, DAY ONLY
701206-05	LANE CLOSURE , 2L, 2W, NIGHT ONLY, FOR SPEEDS ≥ 45 MPH
701301-04	LANE CLOSURE, 2L, 2W, SHORT TIME OPERATIONS
701306-04	LANE CLOSURE, 2L, 2W, SLOW MOVING OPERATIONS DAY ONLY, FOR SPEEDS ≥ 45 MPH
701311-03	LANE CLOSURE 2L, 2W MOVING OPERATIONS - DAY ONLY
701501-06	URBAN LANE CLOSURE, 2L, 2W, UNDIVIDED
701901-08	TRAFFIC CONTROL DEVICES
725001-01	OBJECT AND TERMINAL MARKERS
780001-05	TYPICAL PAVEMENT MARKINGS
782006-01	GUARDRAIL AND BARRIER WALL REFLECTOR MOUNTING DETAILS
643001-02	SAND MODULE IMPACT ATTENUATORS
862001-01	UNINTERRUPTED POWER SUPPLY

## GENERAL NOTES

1. FACTORS USED FOR ESTIMATING PLAN QUANTITIES ARE AS FOLLOWS AND SHALL NOT BE USED FOR THE BASIS OF FINAL QUANTITIES:
 

ALL HOT MIX ASPHALT	2.016 TONS/CU. YD.
ALL AGGREGATE	2.05 TONS/CU. YD.
2. THE QUANTITY OF SHORT TERM PAVEMENT MARKING SHOWN IN THE PLANS IS BASED ON ONE APPLICATION EACH FOR THE HMA SURFACE REMOVAL, BINDER COURSE, AND SURFACE COURSE.
3. THE CONTRACTOR SHALL STAMP STATIONING IN THE PROPOSED HOT MIX ASPHALT SURFACE AT 300 FT INTERVALS ON ALTERNATING SIDES OF THE PAVEMENT AND AS DIRECTED BY THE ENGINEER. THE STATION SYMBOL STAMPS USED SHALL BE FURNISHED BY THE CONTRACTOR. THEY SHALL BE 5 1/2 IN. TALL, OF A DESIGN APPROVED BY THE ENGINEER, AND SHALL REMAIN THE PROPERTY OF THE CONTRACTOR.
4. LONGITUDINAL JOINT SEALANT SHALL BE PLACED UNDER THE HMA SURFACE COURSE.
5. THE USE OF A VIBRATORY ROLLER SHALL NOT BE ALLOWED.

## HMA MIX REQUIREMENT TABLE

LOCATIONS:	HOT-MIX ASPHALT SURFACE COURSE & INCIDENTAL HMA	HOT-MIX ASPHALT BINDER COURSE
MIXTURE USE(S):	HOT-MIX ASPHALT SURFACE COURSE, MIX C N70	HOT-MIX ASPHALT BINDER, N70, IL-9.5FG
AB/PG:	PG64-22	PG64-22
ABR % (MAX):	SEE SPECIAL PROVISION	SEE SPECIAL PROVISION
DESIGN AIR VOIDS:	4.0 % @ N70 GYRATION DESIGN	4.0 % @ N70 GYRATION DESIGN
MIXTURE COMPOSITION: (GRADATION MIXTURE)	IL-9.5mm	IL-9.5mmFG
FRICTION AGGREGATE:	C SURFACE	NONE
MIXTURE WEIGHT:	112 LBS/SQ YD/IN	112 LBS/SQ YD/IN
QUALITY MANAGEMENT PROGRAM:	QCQA - HMA SURFACE COURSE QCQA - INCIDENTAL HMA & HMA SHOULDER	QCQA - HMA BINDER COURSE QCQA - HMA SHOULDER
SUBLOT SIZE:	TBD	TBD

## MTD CROSSING RESTRICTION TABLE

ROUTE (W CEDAR ST) SN & CENTERLINE STATION	EXISTING FILL HEIGHT OVER BOX CULVERT	THICKNESS OF EXISTING PAVEMENT OVER BOX CULVERT	MTD CROSSING RESTRICTONS (NOTE 1)
	FOOT	FOOT	
SN 077-0030 STA 1+34	N/A	N/A	EMPTY

MTD NOTES:

1. THE CONTRACTOR IS ALLOWED AN EMPTY MTD WITH THE FOLLOWING MAXIMUM GROSS WEIGHT RESTRICTION OF 40 TONS OVER THE STRUCTURE LISTED ABOVE. IF THE CONTRACTOR ELECTS TO USE A MTD IT WILL BE AT THE CONTRACTOR EXPENSE AND NOT INCLUDED IN THE CONTRACT PRICE.

## COMMITMENTS

NONE

REV. - MS

MODEL: D:\p\m... FILE NAME: PUL22088B... D:\CT PTB 196 Item 61122088.D11 - O misted Resurfacing\CA3DM\crosstation\CADD\Drawings\shc-jenrectes.dgn



USER NAME = ryme.wirtjes	DESIGNED -	REVISED -
PLOT SCALE = 2.0000 / in.	DRAWN -	REVISED -
PLOT DATE = 4/29/2021	CHECKED -	REVISED -
	DATE -	REVISED -

	DESIGNED -	REVISED -
	DRAWN -	REVISED -
	CHECKED -	REVISED -
	DATE -	REVISED -

**STATE OF ILLINOIS  
DEPARTMENT OF TRANSPORTATION**

**GENERAL NOTES & HIGHWAY STANDARDS**

SCALE: SHEET OF SHEETS STA. TO STA.

S.B.I. RTE.	SECTION	COUNTY	TOTAL SHEETS	SHEET NO.
147	120RS-8	PULASKI	16	3
CONTRACT NO. 78886				
ILLINOIS   FED. AID PROJECT				

CODE NO.	ITEM	UNIT	TOTAL QUANTITY	CONSTRUCTION CODE
				100% STATE
				ROADWAY
				0005
	RURAL			
20400800	FURNISHED EXCAVATION	CU YD	43	43
21400100	GRADING AND SHAPING DITCHES	FOOT	225	225
40600290	BITUMINOUS MATERIALS (TACK COAT)	POUND	1,677	1,677
40600982	HOT-MIX ASPHALT SURFACE REMOVAL - BUTT JOINT	SQ YD	56	56
40600985	PORTLAND CEMENT CONCRETE SURFACE REMOVAL - BUTT JOINT	SQ YD	56	56
40600990	TEMPORARY RAMP	SQ YD	60	60
40602970	HOT-MIX ASPHALT BINDER COURSE, IL-9.5FG, N70	TON	169	169
40604052	HOT-MIX ASPHALT SURFACE COURSE, IL-9.5, MIX "C", N70	TON	203	203
40800050	INCIDENTAL HOT-MIX ASPHALT SURFACING	TON	24	24
44000155	HOT-MIX ASPHALT SURFACE REMOVAL, 1 1/2"	SQ YD	2,337	2,337
48102100	AGGREGATE WEDGE SHOULDER, TYPE B	TON	21	21
50102400	CONCRETE REMOVAL	CU YD	3.2	3.2
50900200	STEEL RAILING, TYPE 2399	FOOT	127	127
* 63000001	STEEL PLATE BEAM GUARDRAIL, TYPE A, 6 FOOT POSTS	FOOT	25	25

\* SPECIALTY ITEM

MODEL Path: \\p106\item 611220088.015 - 01\Extract Resurfacing\CADD\Information\CADD\_Drawing\18th-SOC.dgn  
FILE NAME: \\p106\item 611220088.015 - 01\Extract Resurfacing\CADD\Information\CADD\_Drawing\18th-SOC.dgn



USER NAME = ryan.wittjes  
DRAWN -  
CHECKED -  
DATE -  
PLOT SCALE = 2,0000' / in.  
PLOT DATE = 4/29/2021

DESIGNED -  
DRAWN -  
CHECKED -  
DATE -  
REVISED -  
REVISED -  
REVISED -  
REVISED -

STATE OF ILLINOIS  
DEPARTMENT OF TRANSPORTATION

SUMMARY OF QUANTITIES

SCALE: SHEET 1 OF 3 SHEETS STA. TO STA.

S.B.I. RTE.	SECTION	COUNTY	TOTAL SHEETS	SHEET NO.
147	120RS-8	PULASKI	16	4
CONTRACT NO. 78886				
ILLINOIS FED. AID PROJECT				



CODE NO.	ITEM	UNIT	TOTAL QUANTITY	CONSTRUCTION CODE	
				100% STATE	
				ROADWAY	
				0005	RURAL
* 72501000	TERMINAL MARKER - DIRECT APPLIED	EACH	4	4	
* 78001110	PAINT PAVEMENT MARKING - LINE 4"	FOOT	2,578	2,578	
78200005	GUARDRAIL REFLECTORS, TYPE A	EACH	4	4	
78300201	PAVEMENT MARKING REMOVAL - GRINDING	SQ FT	57	57	
* 86200300	UNINTERRUPTABLE POWER SUPPLY, EXTENDED	EACH	1	1	
X7030005	TEMPORARY PAVEMENT MARKING REMOVAL	SQ FT	860	860	
Z0033700	LONGITUDINAL JOINT SEALANT	FOOT	1,070	1,070	

\* SPECIALTY ITEM

MODEL: Default  
 FILE NAME: I:\11220088 - IDOT PTB 106 Item 611220088.015 - O'Brien Resurfacing\CADD\Information\CADD\_Drawing\11220088.dgn  
 ILLINOIS DESIGN FIRM LICENSE NO.: 184.001115



USER NAME = ryan.witjes	DESIGNED -	REVISED -
PLOT SCALE = 2,0000' / in.	DRAWN -	REVISED -
PLOT DATE = 5/5/2021	CHECKED -	REVISED -
	DATE -	REVISED -

DESIGNED -	REVISED -
DRAWN -	REVISED -
CHECKED -	REVISED -
DATE -	REVISED -

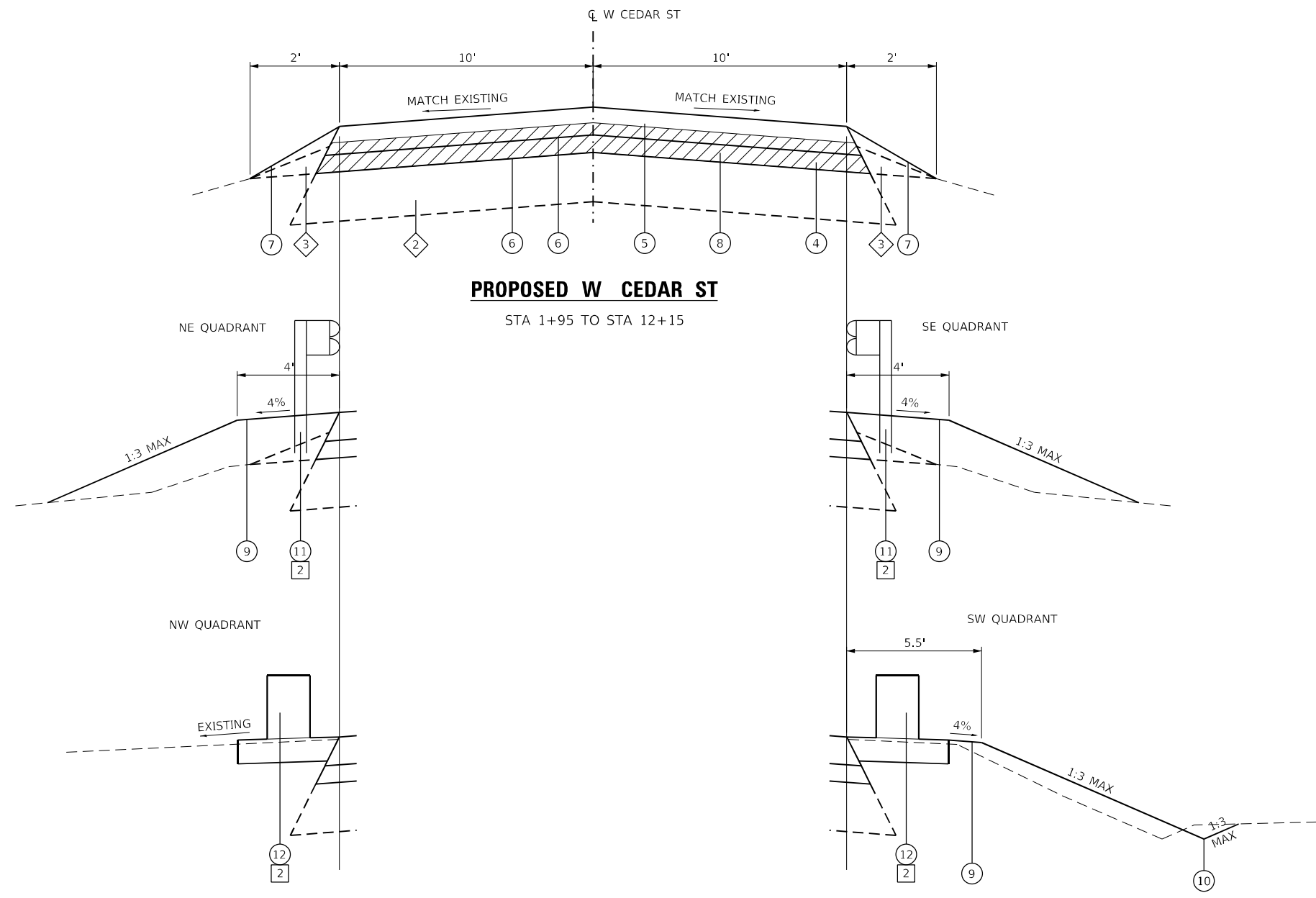
**STATE OF ILLINOIS  
DEPARTMENT OF TRANSPORTATION**

SUMMARY OF QUANTITIES			
SCALE:	SHEET 3	OF 3	SHEETS
STA.	TO STA.		

S.B.I. RTE.	SECTION	COUNTY	TOTAL SHEETS	SHEET NO.
147	120RS-8	PULASKI	16	6
CONTRACT NO. 78886				
ILLINOIS FED. AID PROJECT				

**TYPICAL SECTION NOTES**

- 1** LONGITUDINAL JOINT SEALANT TO BE USED UNDER THE SURFACE LIFT
- 2** PR GUARDRAIL, TRAFFIC BARRIER TERMINAL, & IMPACT ATTENUATOR:  
 STA 0+74 TO STA 0+94 (RT)  
 STA 0+86 TO STA 1+06 (LT)  
 STA 1+57 TO STA 2+45 (RT)  
 STA 1+70 TO STA 2+83 (LT)



**PROPOSED W CEDAR ST**

STA 1+95 TO STA 12+15

NE QUADRANT

SE QUADRANT

NW QUADRANT

SW QUADRANT

EXISTING

CL W CEDAR ST

VARIES

VARIES

**EXISTING W CEDAR ST**

STA 1+95 TO STA 12+15

**TYPICAL SECTION LEGEND**

- 1** EXISTING HMA PAVEMENT
- 2** EXISTING PCC PAVEMENT
- 3** EXISTING AGGREGATE SHOULDER WEDGE
- 4** HMA BINDER COURSE, IL-9.5FG, N70, 1 1/4"
- 5** HMA SURFACE COURSE, IL-9.5, MIX "C", N70, 1 1/2"
- 6** BITUMINOUS MATERIALS (TACK COAT)
- 7** AGGREGATE WEDGE SHOULDER, TYPE B
- 8** HOT-MIX ASPHALT SURFACE REMOVAL, 1 1/2"
- 9** PROPOSED EARTH SHOULDER
- 10** PROPOSED GRADING AND SHAPING DITCHES
- 11** PROPOSED GUARDRAIL
- 12** PROPOSED IMPACT ATTENUATOR & BASE (SEE MANUFACTURER SPECIFICATIONS)

MODEL: D:\p\h\l\...  
 FILE NAME: I:\DOT\PTB\_198\_Item 6\1220088\_015 - Contract Resurficing\CADD\Microstation\CADD\_Drawing\stht-typicsec.dgn  
 ILLINOIS DESIGN FIRM LICENSE NO.: 184.001115



USER NAME = ryne.wiltjes	DESIGNED -	REVISED -
PLOT SCALE = 40,0000 * / in.	DRAWN -	REVISED -
PLOT DATE = 4/29/2021	CHECKED -	REVISED -
	DATE -	REVISED -

**ILLINOIS DEPARTMENT OF TRANSPORTATION**

**PROPOSED TYPICAL SECTIONS**

SCALE: NTS    SHEET 1 OF 1 SHEETS    STA.    TO STA.

S.B.I. RTE.	SECTION	COUNTY	TOTAL SHEETS	SHEET NO.
147	120RS-8	PULASKI	16	7
CONTRACT NO. 78886				
ILLINOIS FED. AID PROJECT				

**EARTHWORK SCHEDULE**

STATION	STATION	O/S	FURNISHED EXCAVATION (CU YD)	GRADING & SHAP DITCH (FOOT)
W CEDAR ST				
+69	+95	RT	17	25
1+56	3+17	RT	12	89
1+69	3+54	LT	14	111
TOTAL			43	225

**ENTRANCE SCHEDULE**

STATION	OFFSET	ENTRANCE TYPE	EXISTING SURFACE	INCIDENTAL HMA SURF (TON)	AGG WEDGE SHLD TYPE B (TON)
W CEDAR ST					
7+00	LT	CE/PE	AGG	10.8	1.9
10+25	LT	PE	AGG	0.5	1.8
11+15	RT	PE	AGG	2.0	0.7
11+90	RT	CE	PCC	1.4	
SUBTOTAL				14.7	4.4
TOTAL				15	5

**GUARDRAIL SCHEDULE**

STATION	STATION	O/S	CONC REM (CU YD)	STEEL RAIL TYPE 2399 (FOOT)	SPBGR TY A 6FT POSTS (FOOT)	TRAF BAR TERM T6A (EACH)	TR BAR TRM T1 SPL TAN (EACH)	GUARDRAIL REMOV (FOOT)	IMP ATTEN FRD NAR TL3 (EACH)	ATTENUATOR BASE (SQ YD)	TEMP BR TRAF SIGNALS (EACH)	TERMINAL MARKER - DA (EACH)	GRDRAIL REF TYPE A (EACH)	UNINTER POWER SUP EXT (EACH)
W CEDAR ST														
+65	+94	RT						27	1	14		1	2	
+67	1+06	LT						41	1	14		1	2	
+94	1+57	RT	1.6	63.5							1			1
1+06	1+70	LT	1.6	63.5										
1+57	2+59	RT				1	1	27				1		
1+70	2+97	LT			25	1	1	30				1		
TOTAL			3.2	127	25	2	2	125	2	28	1	4	4	1

**PAVEMENT SCHEDULE**

STATION	STATION	OFFSET	BIT MATLS TACK CT (POUND)	HMA SURF REM BUTT JT (SQ YD)	PCC SURF REM BUTT JT (SQ YD)	TEMPORARY RAMP (SQ YD)	HMA BC IL-9.5FG N70 (TON)	HMA SC IL-9.5 C N70 (TON)	HMA SURF REM 1 1/2 (SQ YD)	AGG WEDGE SHLD TYPE B (TON)	LONG JOINT SEALANT (FOOT)
W CEDAR ST											
1+70	1+95	LT/RT	38		55.6	21	4	5		2	25
1+95	12+15	LT/RT	1,551				161	193	2,267	12	1,020
12+15	12+40	LT/RT	39	55.6		21	4	5		2	25
SUBTOTAL			1,628	55.6	55.6	42	169	203	2,267	16	1,070
TOTAL			1,628	56	56	42	169	203	2,267	16	1,070

**SIDEROADS SCHEDULE**

STATION	NAME	OFFSET	EXISTING SURFACE	BIT MATLS TACK CT (POUND)	TEMPORARY RAMP (SQ YD)	INCIDENTAL HMA SURF (TON)	HMA SURF REM 1 1/2 (SQ YD)
W CEDAR ST							
9+40	GLENDAL ST	LT	HMA	19	7	3.2	27
11+35	DEPOT ST	LT	HMA	30	11	5.1	43
SUBTOTAL				49	18	8.3	70
TOTAL				49	18	9	70

**PAVEMENT MARKING SCHEDULE**

STATION	STATION	OFFSET	SHORT TERM PAVT MKING	SHRT TRM PAVT MK REM	TEMP PVT MK LINE 4		PAINT PVT MK LINE 4		PAVMT MRKG REM GRIND (SQ FT)	TEMP PAVT MKING REMOV (SQ FT)
			SKIP DASH YELLOW (FOOT)	(SQ FT)	SOLID WHITE (FOOT)	SKIP DASH YELLOW (FOOT)	SOLID WHITE (FOOT)	SKIP DASH YELLOW (FOOT)		
W CEDAR ST										
+94	12+40	RT			1,146		1,146		25.3	382.0
+94	12+40	CNTR	352	117.3		286		286	6.3	95.3
+94	12+40	LT			1,146		1,146		25.3	382.0
SUBTOTAL			352	117.3	2,292	286	2,292	286	56.9	859.3
TOTAL			352	118	2,578		2,578		57	860

MODEL: P:\data\... FILE NAME: I:\2008\... ILLINOIS DESIGN FIRM LICENSE NO.: 184.001115

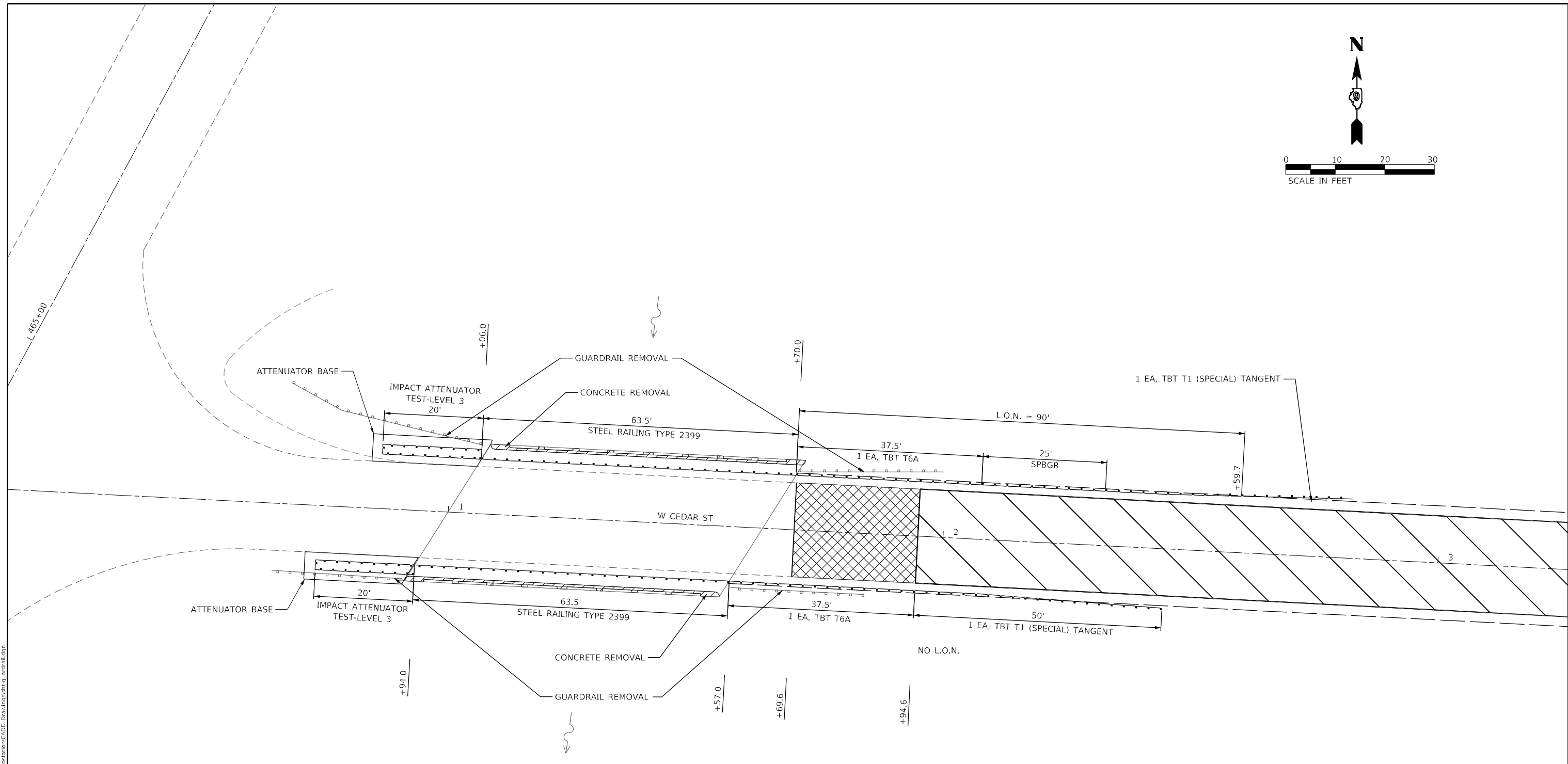
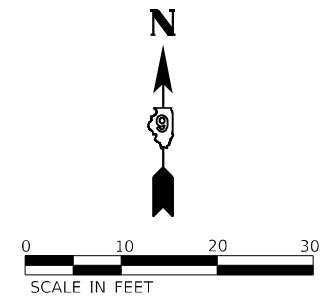


USER NAME = rjnr,witjes	DESIGNED -	REVISED -
	DRAWN -	REVISED -
PLOT SCALE = 40,0000 * / in.	CHECKED -	REVISED -
PLOT DATE = 5/5/2021	DATE -	REVISED -

**ILLINOIS DEPARTMENT OF TRANSPORTATION**

<b>SCHEDULES</b>		S.B.I. RTE.	SECTION	COUNTY	TOTAL SHEETS	SHEET NO.
SCALE: NTS	SHEET 1 OF 1 SHEETS	147	120R5-8	PULASKI	16	8
					CONTRACT NO. 78886	
					ILLINOIS FED. AID PROJECT	





LEGEND

- 1 1/2" MILL AND RESURACING PER SCHEDULE
- CONCRETE REMOVAL
- IMPACT ATTENUATOR
- PCC SURFACE REMOVAL - BUTT JOINT

- NOTE 1: INCLUDE TENSION OR CONCRETE BACKUP AND QUAD-BEAM TO THRIE BEAM END SHOE WITH IMPACT ATTENUATORS
- NOTE 2: FURNISHED EXCAVATION WILL BE REQUIRED FOR SHOULDER WIDENING TRANSITIONS OF GUARDRAIL AND TERMINALS FOR THE NE, SE, AND SW QUADRANTS PER HIGHWAY STANDARDS 630001 AND 630301

**JASON A. DREYER**  
081 007307

*Jason A. Dreyer*

DATE: 6/24/2021

EXPIRATION: 11/30/2022

THE SEAL ON THIS SHEET IS FOR THE WORK ON STRUCTURE NO. 077-0030, SHOWN ON THIS SHEET AND SHEETS 10 AND 16 OF 16. THE WORK INCLUDES THE DETAILS AND INSTALLATION OF STEEL RAILING, TYPE 2399 AND THE REMOVAL OF THE EXISTING CONCRETE BRIDGE RAILS. FOR DETAILS AND QUANTITIES, SEE SHEETS 10 AND 16 OF 16.

ILLINOIS DEPARTMENT OF TRANSPORTATION

SN 077-0030  
GUARDRAIL SHEET



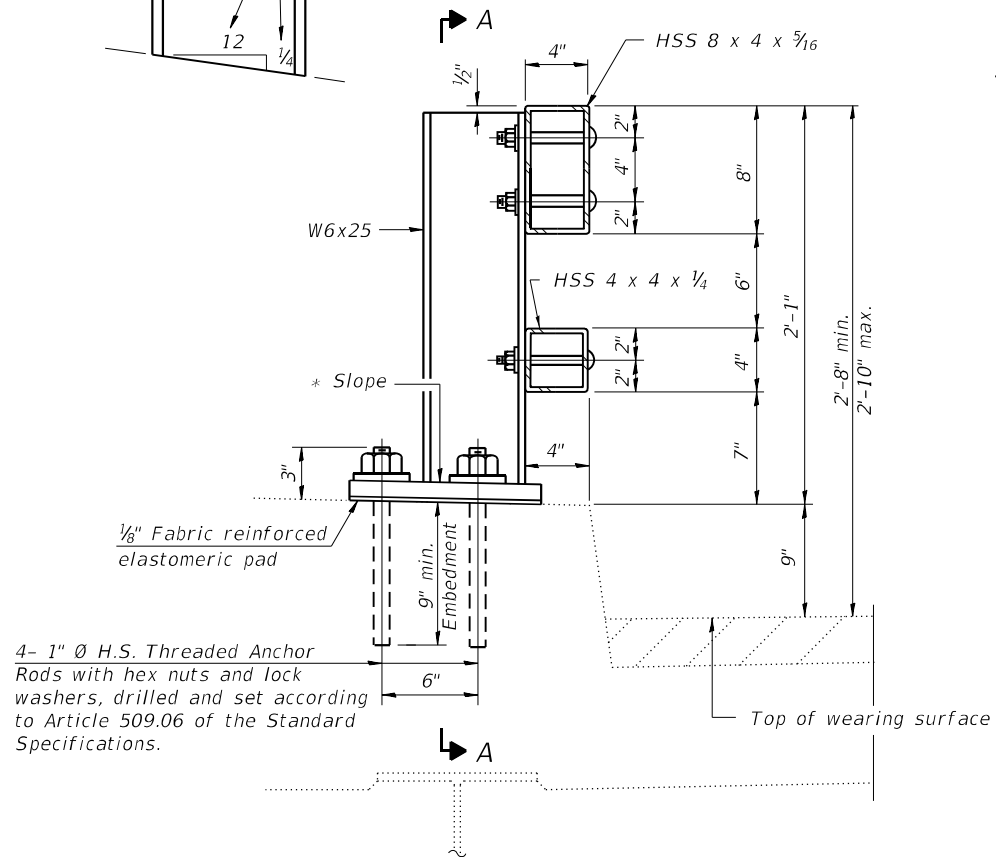
USER NAME = jason.dreyer	DESIGNED -	REVISED -	
	DRAWN -	REVISED -	
PLOT SCALE = 20,0000 * / in.	CHECKED -	REVISED -	
PLOT DATE = 6/24/2021	DATE -	REVISED -	

SCALE: 1" = 10'	SHEET 1 OF 1 SHEETS	STA. 0+00 TO STA. 3+27	
-----------------	---------------------	------------------------	--

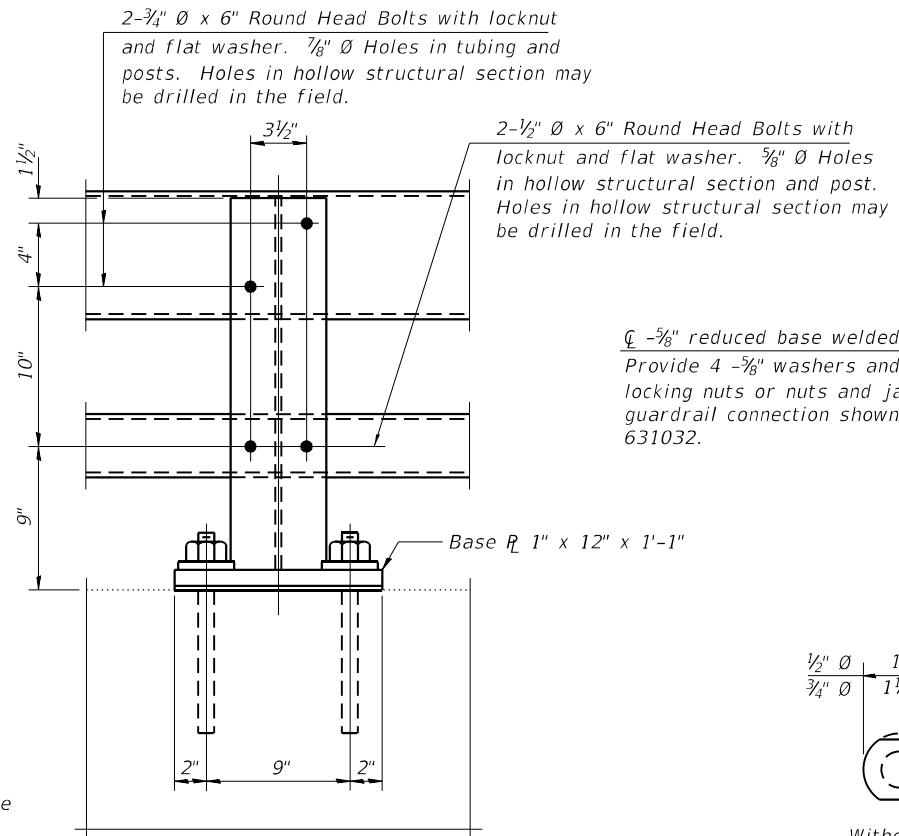
S.B.I. RTE.	SECTION	COUNTY	TOTAL SHEETS	SHEET NO.
147	120R5-8	PULASKI	16	9
CONTRACT NO. 78886				
ILLINOIS FED. AID PROJECT				

MODEL: I:\projects\077-0030\077-0030.dwg  
 FILE NAME: I:\projects\077-0030\077-0030.dwg  
 PROJECT: 077-0030  
 DRAWING: GUARDRAIL SHEET

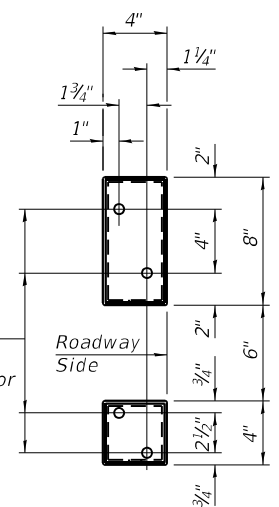
\* Cut bottom end of post to curb slope.



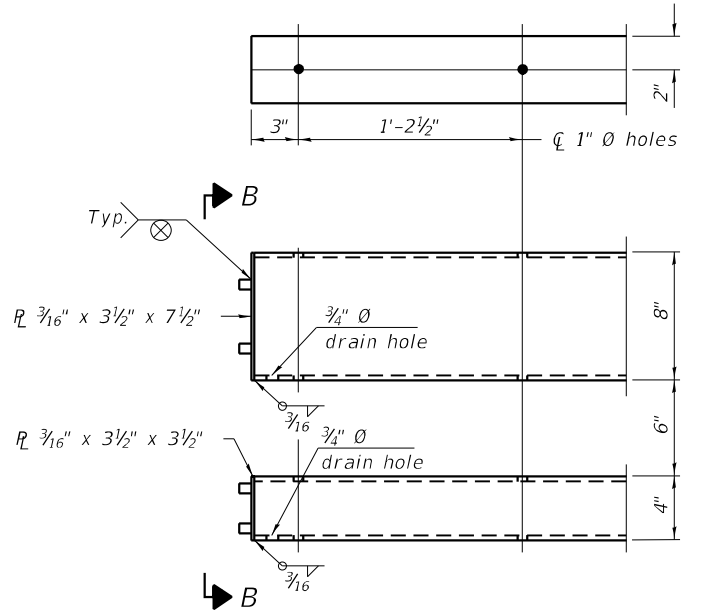
SECTION AT RAIL POST



SECTION A-A

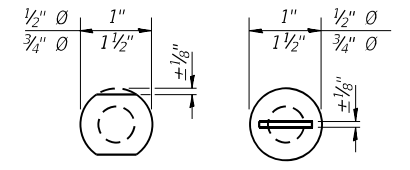


VIEW B-B

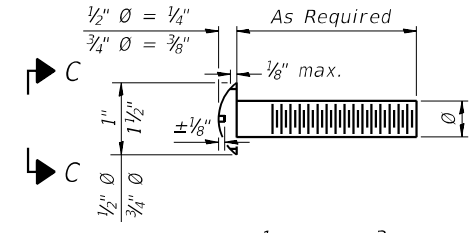


END OF RAIL DETAILS

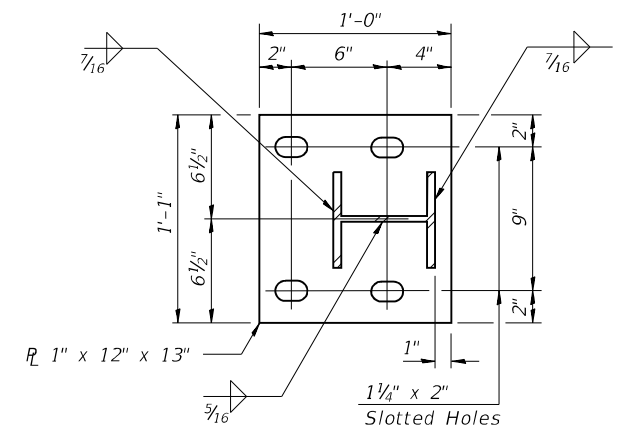
Provide 4 - 5/8" reduced base welded studs. Provide 4 - 5/8" washers and self-locking nuts or nuts and jam nuts for guardrail connection shown on Std. 631032.



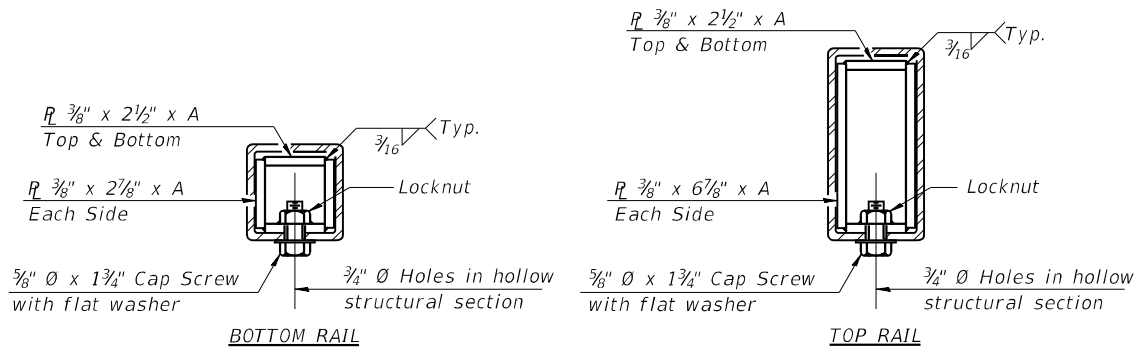
VIEW C-C



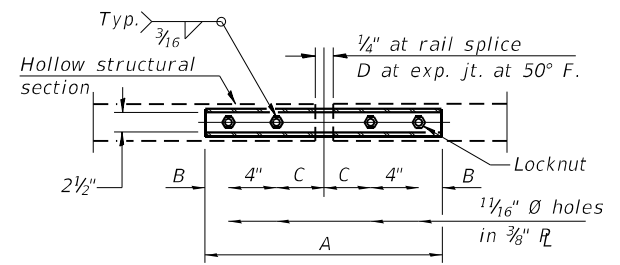
DETAIL OF 1/2" & 3/4" ROUND HEAD BOLTS



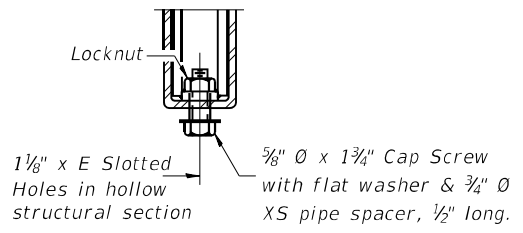
BASE PLATE DETAIL



SECTIONS AT RAIL SPLICE



PLAN-BOTT. SPLICE R TYPICAL



RAIL SPLICE CONNECTION AT EXPANSION JT.

Notes:  
 Posts shall not be located closer than 1'-3" to an existing bridge expansion joint or end of bridge.  
 Steel Bridge Rail expansion joint shall be provided between any two (2) posts which span a bridge expansion joint. Bolts located at expansion joint shall be provided with locknuts and shall be tightened only to a point that will allow railing movement.  
 Provide one 1/8" and two 1/16" steel shims for 25% of the posts. Shims shall be similar to base plates in size and holes.  
 All steel rail elements shall be galvanized according to Article 509.05 of the Standard Specifications.

SPLICE DIMENSIONS

T	D	A	B	C	E
≤ 4"	2 1/2"	1'-8"	2"	4"	2 1/2"
> 4" ≤ 6 1/2"	3 3/4"	2'-0"	2 1/2"	5 1/2"	3 1/2"
> 6 1/2" ≤ 9"	5"	2'-4"	3 1/2"	6 1/2"	9"
> 9" ≤ 13"	7"	2'-10"	4 1/2"	8 1/2"	11"
Rail Splice	1/4"	1'-8"	2"	4"	—

T = Total movement at expansion joint as shown on the design plans.

BILL OF MATERIAL

Item	Unit	Quantity
Steel Railing, Type 2399	Foot	127

R-31

2-17-2017

(6'-3" Maximum Post Spacing)

MODEL Path: \\s:\projects\2008\015 - CD\Drawings\Construction\CADD\Drawings\Rail\Construction\Details.dgn



USER NAME = rjnr,wiljjes  
 DESIGNED -  
 DRAWN -  
 PLOT SCALE = 40,0000 \* / in.  
 CHECKED -  
 DATE = 4/29/2021

DESIGNED -  
 DRAWN -  
 CHECKED -  
 DATE -

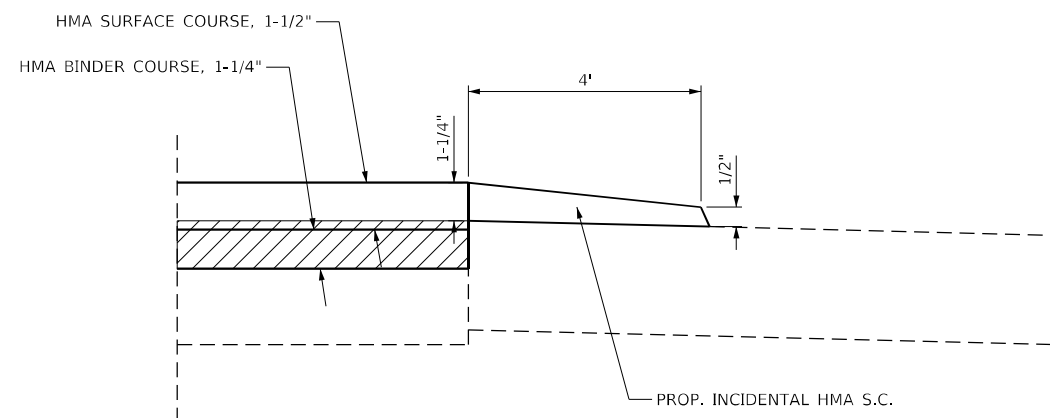
REVISED -  
 REVISED -  
 REVISED -  
 REVISED -

STATE OF ILLINOIS  
 DEPARTMENT OF TRANSPORTATION

S.N. 077-0030  
 STEEL RAILING, TYPE 2399

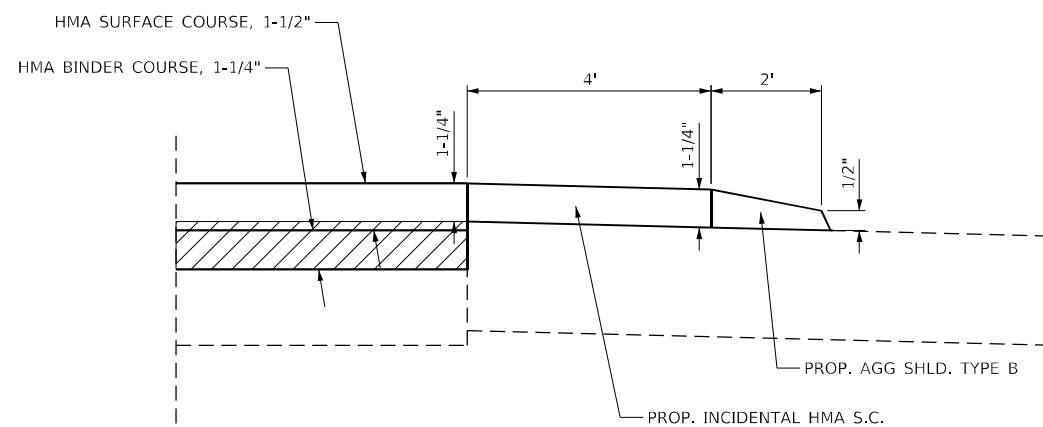
SCALE: NTS SHEET 1 OF 1 SHEETS STA. TO STA.

S.B.I. RTE. SECTION COUNTY TOTAL SHEETS SHEET NO.  
 147 120R5-8 PULASKI 16 10  
 CONTRACT NO. 78886  
 ILLINOIS FED. AID PROJECT



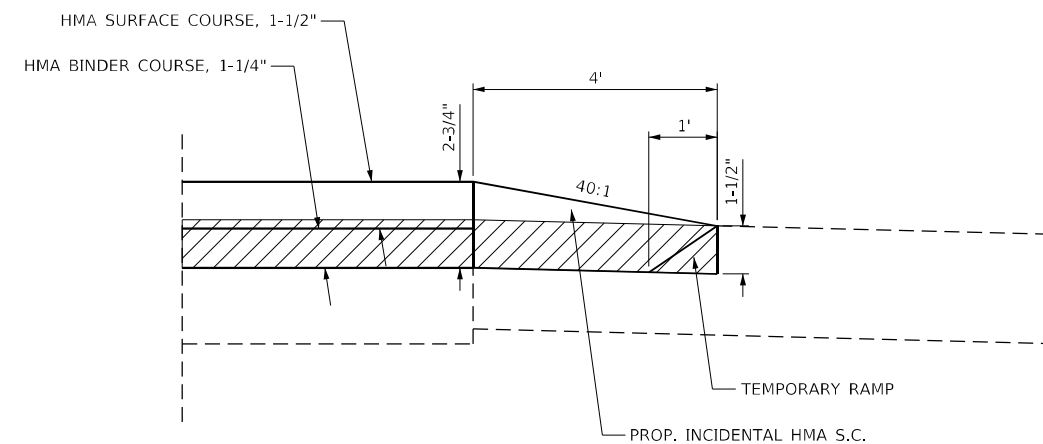
**HMA, PCC, OR OIL & CHIP  
PRIVATE OR COMMERCIAL ENTRANCE**

STA 10+25 LT  
STA 11+90 RT



**AGG OR EARTH, SIDEROAD,  
PRIVATE OR COMMERCIAL ENTRANCE**

STA 7+00 LT  
STA 11+15 RT



**HMA SIDEROAD - BUTT JOINT**

STA 9+40 LT  
STA 11+35 LT



MODEL Path: \\... \\\nFILE NAME: \\... \\\nILLINOIS DESIGN FIRM LICENSE NO.: 184.001115



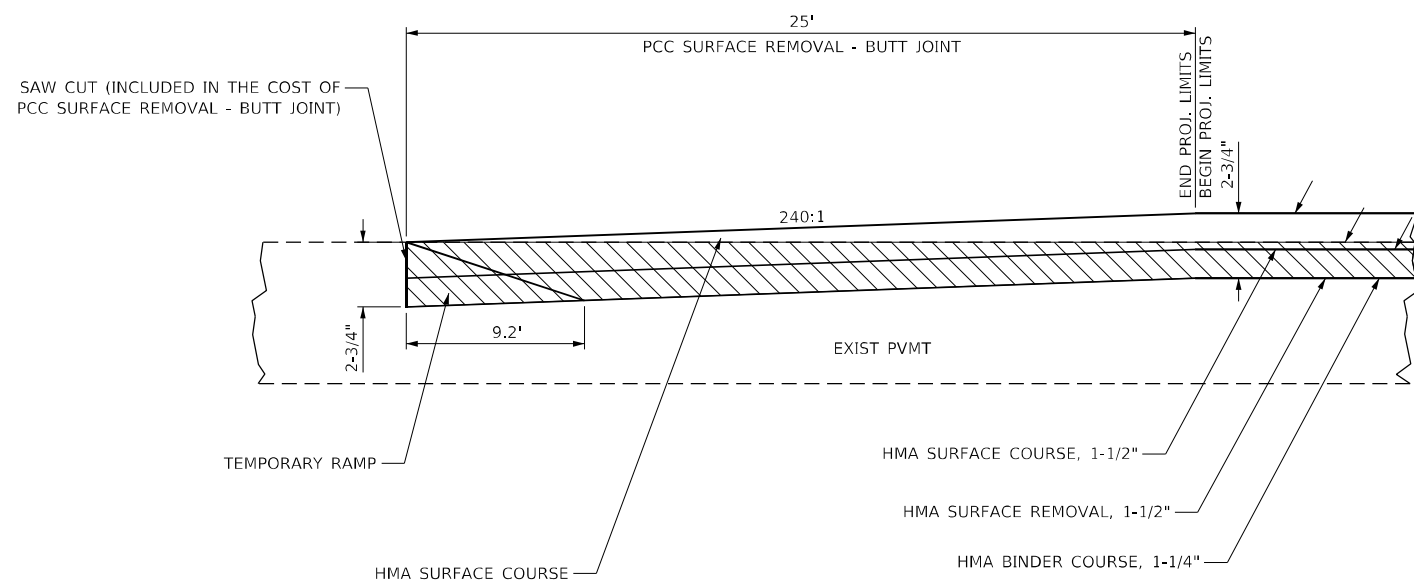
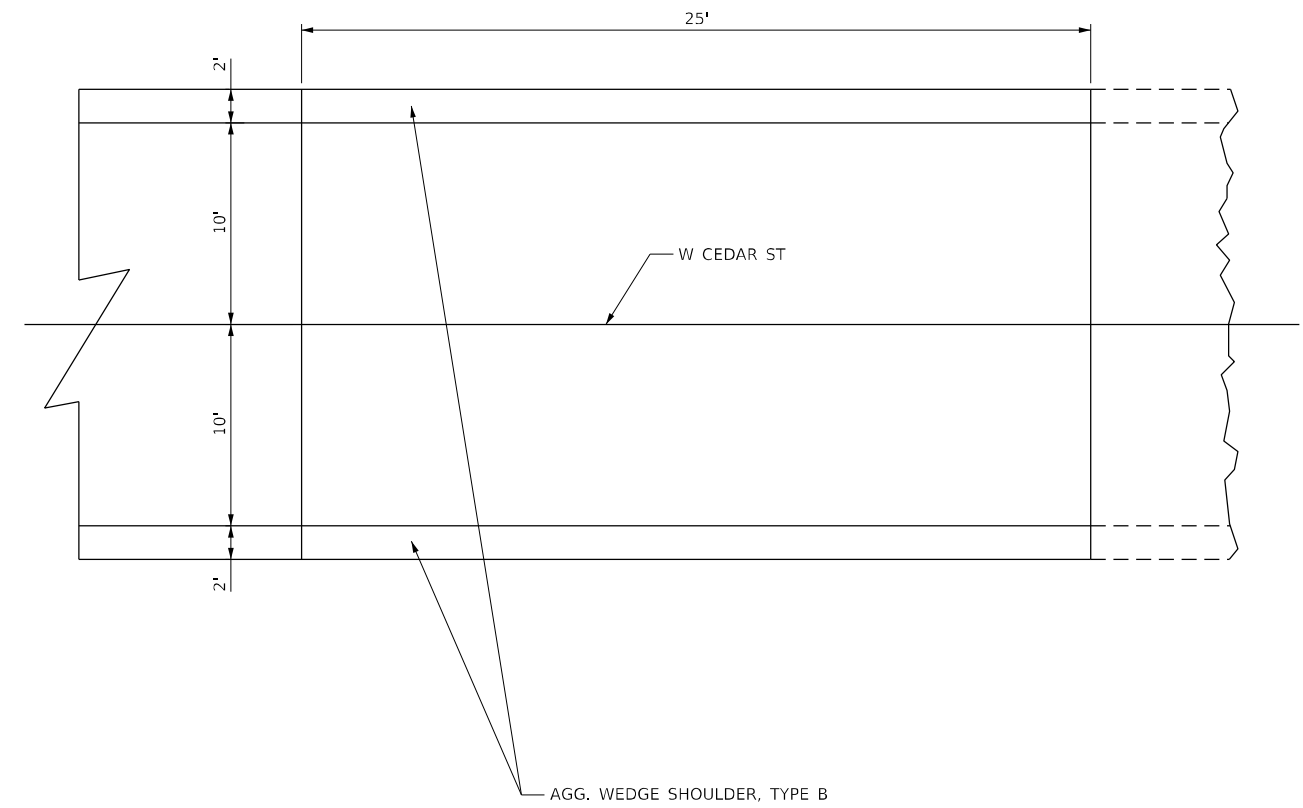
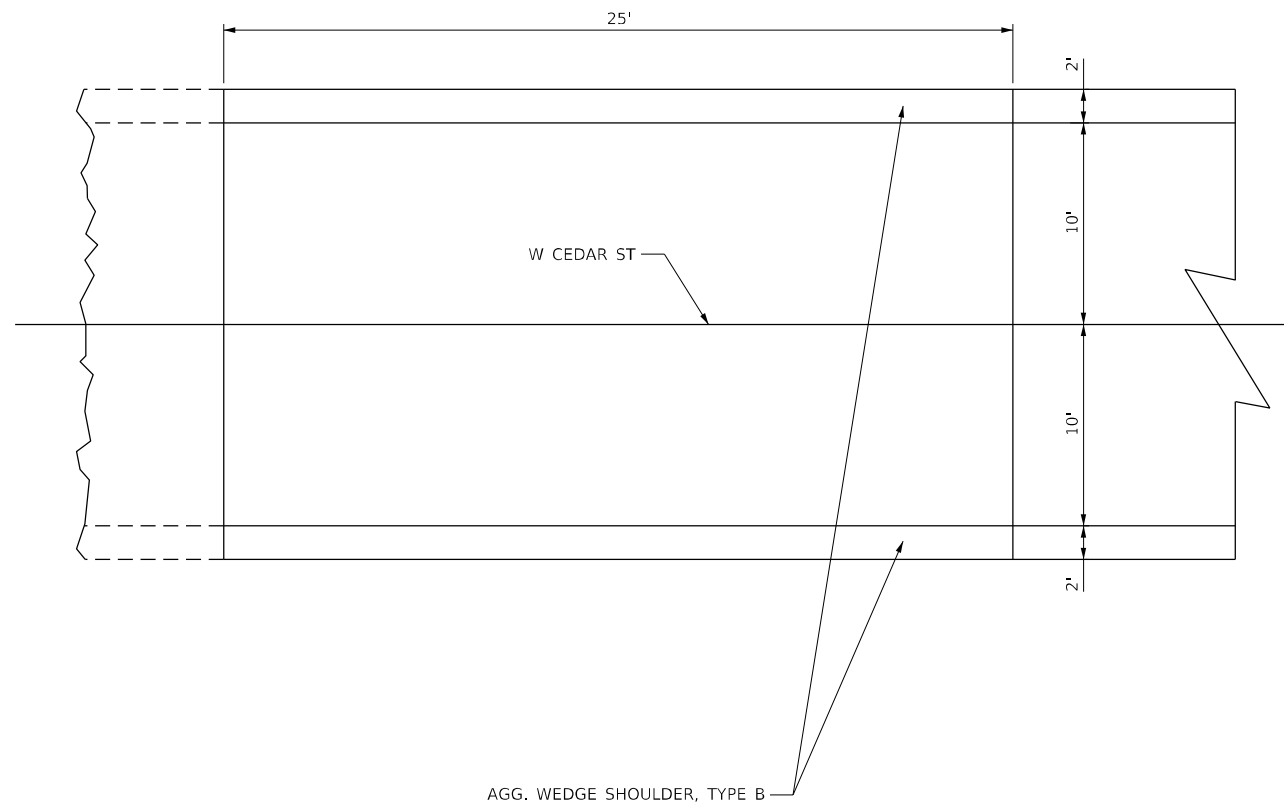
USER NAME = ryne.witjes	DESIGNED -	REVISED -
PLOT SCALE = 40,0000 * / in.	DRAWN -	REVISED -
PLOT DATE = 4/29/2021	CHECKED -	REVISED -
	DATE -	REVISED -

DESIGNED -	REVISED -
DRAWN -	REVISED -
CHECKED -	REVISED -
DATE -	REVISED -

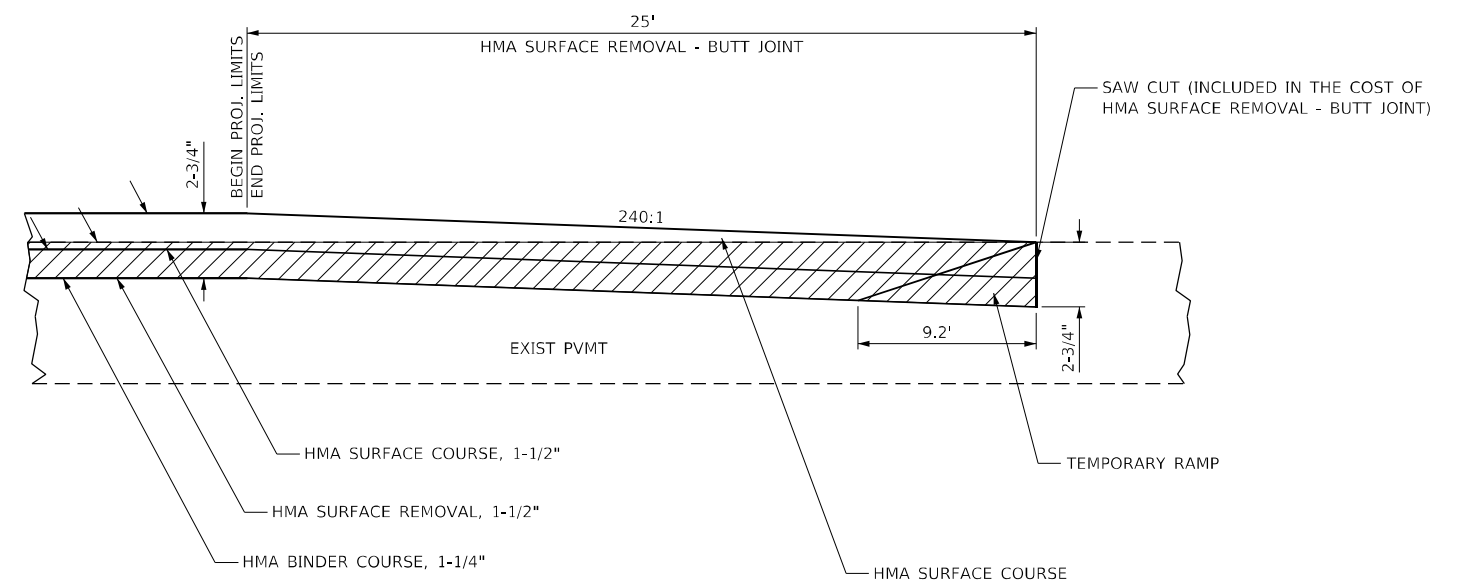
**ILLINOIS DEPARTMENT OF TRANSPORTATION**

CONSTRUCTION DETAILS					
SCALE: NTS	SHEET 1	OF 6	SHEETS	STA.	TO STA.

S.B.I. RTE.	SECTION	COUNTY	TOTAL SHEETS	SHEET NO.
147	120R5-8	PULASKI	16	11
CONTRACT NO. 78886				
ILLINOIS FED. AID PROJECT				



**BUTT JOINT - W CEDAR ST**  
STA 1+69.6 TO STA 1+94.6



**BUTT JOINT - W CEDAR ST**  
STA 12+15 TO 12+40

 PROP. HMA SURFACE REMOVAL

MODEL Path: \\... \\\nCADD\Information\CADD\Drawings\184\Construction\Detail.dgn



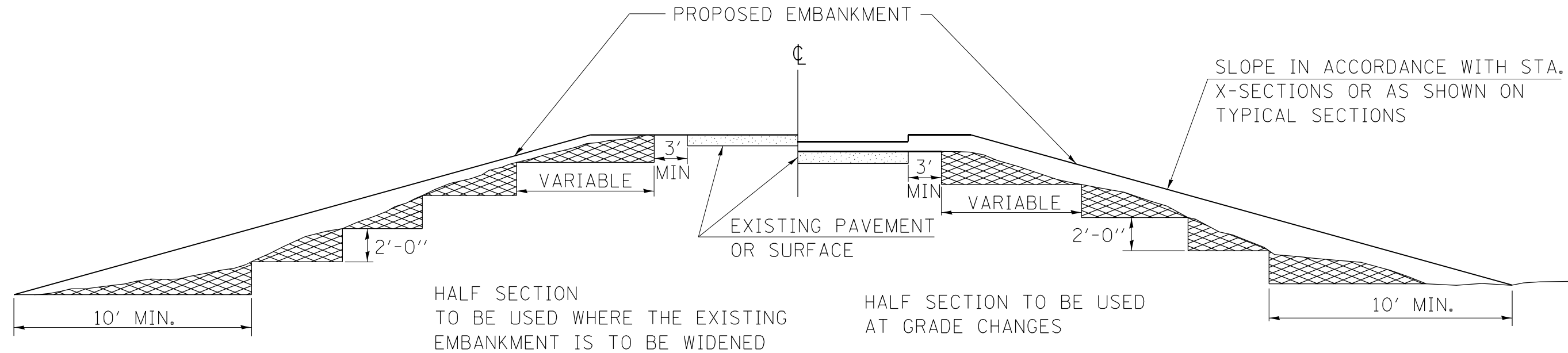
USER NAME = rjnr,wiltjes	DESIGNED -	REVISED -
PLOT SCALE = 40,0000 * / in.	DRAWN -	REVISED -
PLOT DATE = 4/29/2021	CHECKED -	REVISED -
	DATE -	REVISED -

ILLINOIS DEPARTMENT OF TRANSPORTATION

CONSTRUCTION DETAILS			
SCALE: NTS	SHEET 2 OF 6 SHEETS	STA.	TO STA.

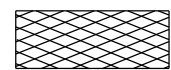
S.B.I. RTE.	SECTION	COUNTY	TOTAL SHEETS	SHEET NO.
147	120R5-8	PULASKI	16	12
CONTRACT NO. 78886				
ILLINOIS FED. AID PROJECT				

# TYPICAL CROSS SECTION SHOWING STEP CONSTRUCTION ON EXISTING FILL



HALF SECTION  
TO BE USED WHERE THE EXISTING  
EMBANKMENT IS TO BE WIDENED

HALF SECTION TO BE USED  
AT GRADE CHANGES



MATERIAL TO BE REMOVED AND REPLACED IN THE EMBANKMENT IN ACCORDANCE WITH ART. 205.04 OF THE STANDARD SPECIFICATION. COST TO BE INCLUDED IN THE VARIOUS ITEMS OF EXCAVATION AND NO ADDITIONAL COMPENSATION WILL BE ALLOWED BECAUSE OF THIS WORK.

STD. 9-16

### REVISIONS

REDRAWN	2-15-89
REVISED	8-15-94
CHECKED	6-3-99
RESIZED	5-7-08
REVIEWED	5-17-13

MODEL: D:\p\h\l... FILE NAME: I:\p\220088 - IDOT\PTB 196 Item 61220088.015 - Contract Resurficing\CADD\Microstation\CADD\_Drawing\std-construction-detail.dgn



USER NAME = rynn.wittjes	DESIGNED -	REVISED -
PLOT SCALE = 40,0000 * / in.	DRAWN -	REVISED -
PLOT DATE = 4/29/2021	CHECKED -	REVISED -
	DATE -	REVISED -

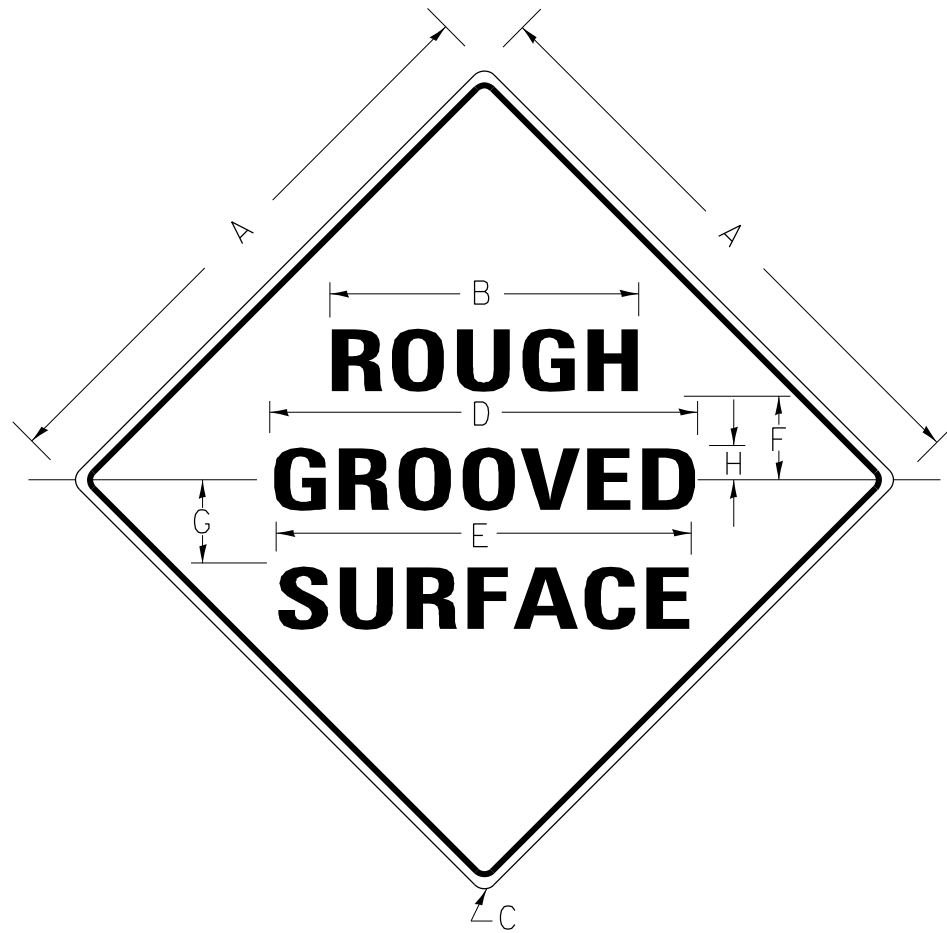
**ILLINOIS DEPARTMENT OF TRANSPORTATION**

### CONSTRUCTION DETAILS

SCALE: NTS    SHEET 3    OF 6    SHEETS    STA.    TO STA.

S.B.I. RTE.	SECTION	COUNTY	TOTAL SHEETS	SHEET NO.
147	120R5-8	PULASKI	16	13
CONTRACT NO. 78886				
ILLINOIS FED. AID PROJECT				

# ILLINOIS STANDARD



## COLORS:

LEGEND AND BORDER- BLACK NON-REFLECTORIZED  
 BACKGROUND- ORANGE REFLECTORIZED

SIGN SIZE	DIMENSIONS							
	A	B	C	D	E	F	G	H
48X48	48.0	24.1	3.0	34.0	33.0	6.0	13.0	3.5

SIGN SIZE	SERIES LINES			MAR- GIN	BOR- DER	BLANK STD.
	1	2	3			
48X48	7C	7C	7C	0.8	1.2	B4-48D

ALL DIMENSIONS IN INCHES

## NOTES:

PRIOR TO ALLOWING TRAFFIC ON ANY PORTION OF THE ROADWAY THAT HAS BEEN COLDMILLED, THE CONTRACTOR SHALL HAVE ERECTED "ROUGH GROOVED SURFACE" SIGNS THAT CONFORM TO THE ABOVE DETAILS. A MINIMUM OF ONE SIGN AT EACH END OF THE IMPROVEMENT WILL BE REQUIRED. THE CONTRACTOR SHALL MAINTAIN THE "ROUGH GROOVED SURFACE" SIGNS UNTIL THE COLDMILLED SURFACE IS COVERED WITH LEVELING BINDER OR SURFACE COURSE.

IF AT ANY TIME THE SIGNS ARE IN PLACE BUT NOT APPLICABLE, THEY SHALL BE TURNED FROM THE VIEW OF MOTORISTS OR COVERED AS DIRECTED BY THE ENGINEER.

THE COST OF FURNISHING, ERECTING, MAINTAINING, AND REMOVING THE REQUIRED SIGNS SHALL BE INCLUDED IN THE CONTRACT.

## REVISIONS

REDRAWN	2-15-89
REVISED	4-6-93
REVISED	3-27-08
REVIEWED	5-17-13

STD. 9-39

MODEL: Default; FILE NAME: I:\2008\122008 - IDOT PTB 196 Item 61220088.015 - Contract Resurfacing\CADD\Information\CADD\_Drawing\196-Construction-Details.dgn



USER NAME = ryan.witjes	DESIGNED -	REVISED -
PLOT SCALE = 40,0000 * / in.	DRAWN -	REVISED -
PLOT DATE = 4/29/2021	CHECKED -	REVISED -
	DATE -	REVISED -

**ILLINOIS DEPARTMENT OF TRANSPORTATION**

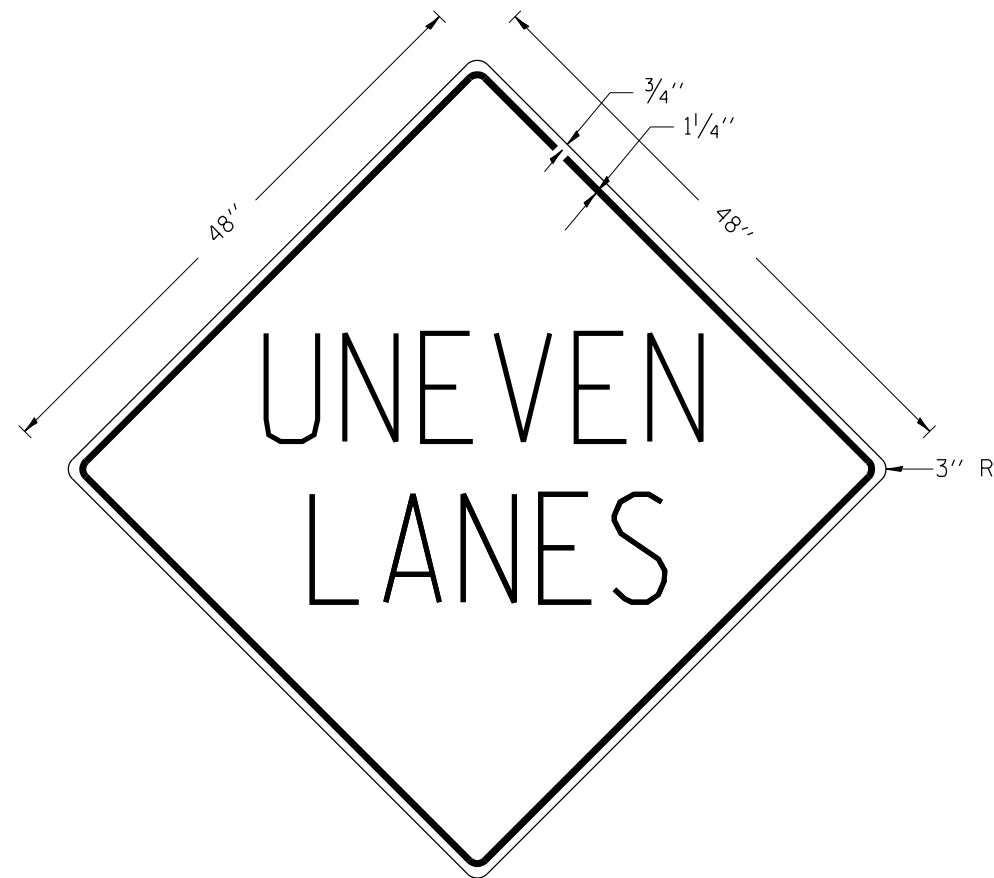
**CONSTRUCTION DETAILS**

SCALE: NTS      SHEET 4    OF 6    SHEETS    STA.                    TO STA.

S.B.I. RTE.	SECTION	COUNTY	TOTAL SHEETS	SHEET NO.
147	120R5-8	PULASKI	16	14
CONTRACT NO. 78886				
ILLINOIS FED. AID PROJECT				

# UNEVEN LANES SIGN

W8-11 (48'' x 48'')



**COLORS:**

LEGEND AND BORDER - BLACK NON-REFLECTORIZED  
 BACKGROUND - ORANGE REFLECTORIZED

**NOTE:** PRIOR TO ALLOWING TRAFFIC ON ANY PORTION OF THE ROADWAY THAT HAS BEEN COLDMILLED OR BEFORE RESURFACING OPERATIONS BEGIN, THE CONTRACTOR SHALL HAVE ERECTED "UNEVEN PAVEMENT" SIGNS THAT CONFORM TO THE ABOVE DETAILS. A MINIMUM OF ONE SIGN AT EACH END OF THE IMPROVEMENT WILL BE REQUIRED. THE CONTRACTOR SHALL MAINTAIN THE "UNEVEN PAVEMENT" SIGNS UNTIL THE RESURFACING OPERATIONS ARE COMPLETED.

IF AT ANY TIME THE SIGNS ARE IN PLACE BUT NOT APPLICABLE, THEY SHALL BE TURNED FROM THE VIEW OF MOTORISTS OR COVERED AS DIRECTED BY THE ENGINEER.

THE COST OF FURNISHING, ERECTING, MAINTAINING, AND REMOVING THE REQUIRED SIGNS SHALL BE INCLUDED IN THE CONTRACT.

REVISIONS

DRAWN	2-15-89
REVISED	4-06-93
REDESIGNED	7-23-04
RESIZED	5-08-08
REVIEWED	5-17-13

STD. 9-41

MODEL: Default  
 FILE NAME: I:\2008\2008 - IDOT\PTB\96 Item 61220088.015 - Contract Resurfacing\CADD\Information\CADD\Drawings\th-construction-details.dgn  
 ILLINOIS DESIGN FIRM LICENSE NO.: 184.001115



USER NAME = ryan.wittjes	DESIGNED -	REVISED -
PLOT SCALE = 40,0000 * / in.	DRAWN -	REVISED -
PLOT DATE = 4/29/2021	CHECKED -	REVISED -
	DATE -	REVISED -

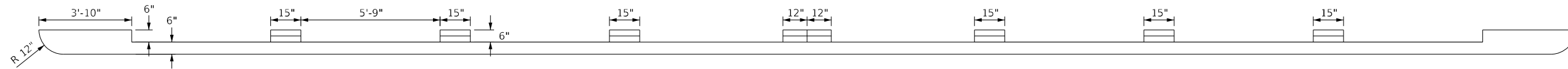
ILLINOIS DEPARTMENT OF TRANSPORTATION

CONSTRUCTION DETAILS

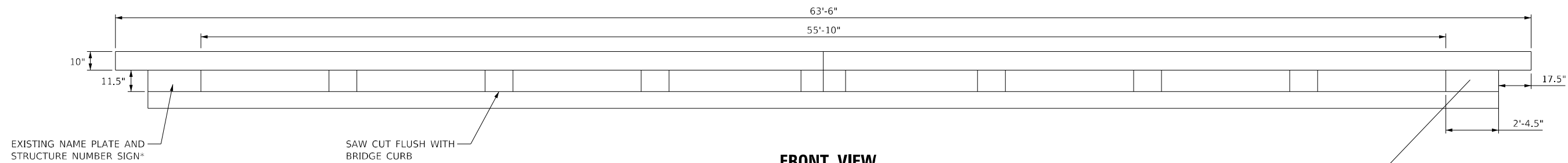
SCALE: NTS SHEET 5 OF 6 SHEETS STA. TO STA.

S.B.I. RTE.	SECTION	COUNTY	TOTAL SHEETS	SHEET NO.
147	120R5-8	PULASKI	16	15
CONTRACT NO. 78886				
ILLINOIS FED. AID PROJECT				

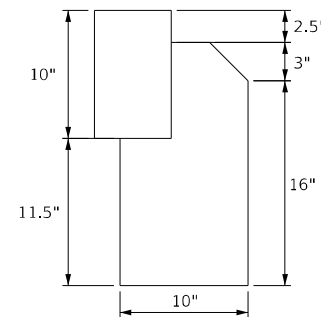
# CONCRETE REMOVAL



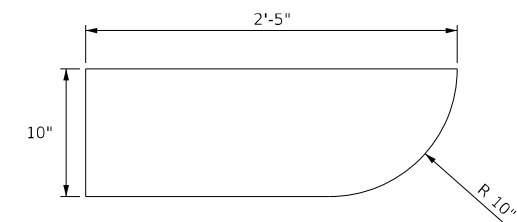
**TOP VIEW**



**FRONT VIEW**



**SIDE VIEW (NOT INCLUDING END PIECES)**



**TOP VIEW OF MIDDLE END PIECE**

STRUCTURE NUMBER	LENGTH OF BRIDGE	CU YD OF CONCRETE
077-0030	63.5'	3.2

\*EXISTING NAME PLATE AND STRUCTURE NUMBER SIGN TO BE SALVAGED. NAME PLATE SHALL BE REINSTALLED AS DIRECTED BY THE ENGINEER. STRUCTURE NUMBER SIGN SHALL BE REINSTALLED ON THE PROPOSED BRIDGE RAIL NEAR THE RELOCATED NAME PLATE AS DIRECTED BY THE ENGINEER.

MODEL Path: \\... \DOT\_PTB\_196\_Item 61222088.dwg - C:\Users\Resurficer\Documents\CADD\Information\DOT\_PTB\_196\_Item 61222088.dwg



USER NAME = ryan.wiljes	DESIGNED -	REVISED -
DRAWN -	REVISIONS -	
PLOT SCALE = 40,0000 * / in.	CHECKED -	REVISED -
PLOT DATE = 4/29/2021	DATE -	REVISED -

ILLINOIS DEPARTMENT OF TRANSPORTATION

CONSTRUCTION DETAILS

SCALE: NTS SHEET 6 OF 6 SHEETS STA. TO STA.

S.B.I. RTE.	SECTION	COUNTY	TOTAL SHEETS	SHEET NO.
147	120R5-8	PULASKI	16	16
CONTRACT NO. 78886				
ILLINOIS FED. AID PROJECT				