

INDEX OF SHEETS

1. COVER SHEET
2. GENERAL NOTES
3. SUMMARY OF QUANTITIES
4. TYPICAL SECTIONS
5. SCHEDULES M.M. 205.0 TO M.M. 209.0
6. SCHEDULES M.M. 212.0 TO M.M. 215.3
7. PAVEMENT MARKING

STANDARDS

- 000001-08 STANDARD SYMBOLS, ABBREVIATIONS AND PATTERNS
- 001006 DECIMAL OF AN INCH AND OF A FOOT
- 701101-05 OFF-ROAD OPERATIONS, MULTILANE, 15' (4.5 m) TO 24" (600 mm) FROM PAVEMENT EDGE
- 701106-02 OFF-ROAD OPERATIONS, MULTILANE, MORE THAN 15' (4.5 m) AWAY
- 701400-10 APPROACH TO LANE CLOSURE, FREEWAY/EXPRESSWAY
- 701401-12 LANE CLOSURE, FREEWAY/EXPRESSWAY
- 701426-09 LANE CLOSURE, MULTILANE INTERMITTENT OR MOVING OPERATION,
- 701428-01 TRAFFIC CONTROL, SETUP AND REMOVAL, FREEWAY/EXPRESSWAY
- 701901-08 TRAFFIC CONTROL DEVICES

**STATE OF ILLINOIS
DEPARTMENT OF TRANSPORTATION**

**PROPOSED
HIGHWAY PLANS**

**F.A.I. ROUTE 55 (I-55)
SECTION 53(2,3)I-5
CENTERLINE MICRO-SURFACING
LIVINGSTON COUNTY**

C-93-083-21

F.A.I. RTE.	SECTION	COUNTY	TOTAL SHEETS	SHEET NO.
55	53(2,3)I-5	LIVINGSTON	7	1
		ILLINOIS	CONTRACT NO. 66L81	

D-93-048-21



FUNCTIONAL CLASSIFICATION
RURAL
INTERSTATE
F.A.I. ROUTE 55 (I-55)
2019 ADT = 22,200
P.V. 72.1% S.U. 2.9% M.U. 25.0%

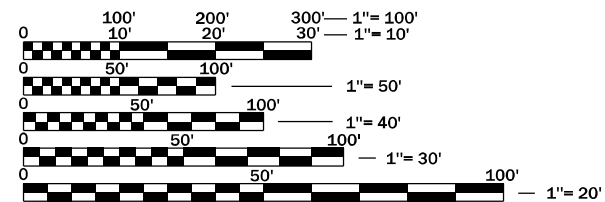
STATE OF ILLINOIS
DEPARTMENT OF TRANSPORTATION

SUBMITTED June 21, 2021

David Alwood
REGIONAL ENGINEER

June 25, 2021 *Scott A. Elk*
ENGINEER OF DESIGN AND ENVIRONMENT

June 25, 2021 *James M. Gu*
DIRECTOR OF HIGHWAYS PROJECT IMPLEMENTATION



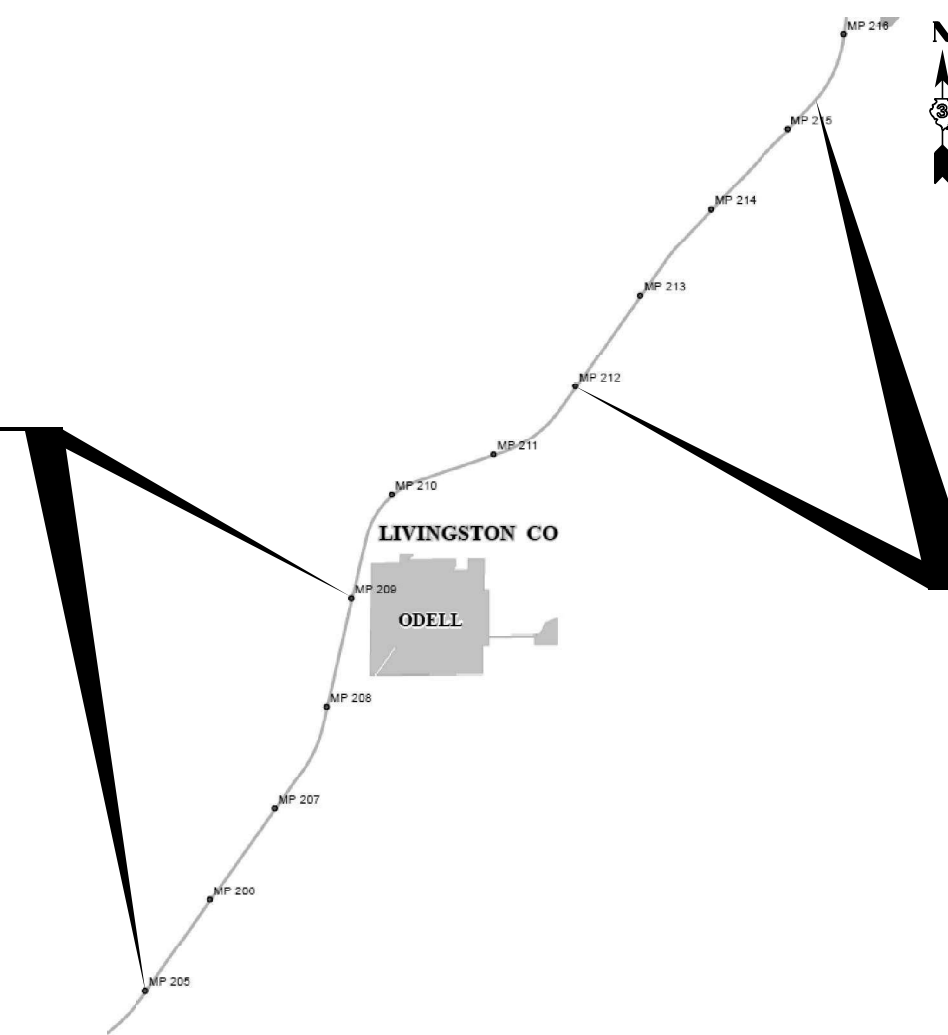
FULL SIZE PLANS HAVE BEEN PREPARED USING STANDARD ENGINEERING SCALES. REDUCED SIZED PLANS WILL NOT CONFORM TO STANDARD SCALES. IN MAKING MEASUREMENTS ON REDUCED PLANS, THE ABOVE SCALES MAY BE USED.

J.U.L.I.E.
JOINT UTILITY LOCATION INFORMATION FOR EXCAVATION
1-800-892-0123
OR 811

PROJECT ENGINEER: YOGESH PATEL
UNIT CHIEF: RON WOODSHANK
DISTRICT 3 NO. (815) 434-6131
CONTRACT NO. 66L81

PROJECT LOCATION NO. 1
M.M. 205.0 TO M.M. 209.0

PROJECT LOCATION NO. 2
M.M. 212.0 TO M.M. 215.3



GROSS LENGTH = 38,544 FT. = 7.3 MILES
NET LENGTH = 19,814 FT. = 3.75 MILES

**PRINTED BY THE AUTHORITY
OF THE STATE OF ILLINOIS**

GENERAL NOTES

THE ENGINEER WILL BE THE SOLE JUDGE CONCERNING CURING TIME FOR THE HOT-MIX ASPHALT AND MICROSURFACING LIFTS.

THE FOLLOWING RATES OF APPLICATION HAVE BEEN USED IN CALCULATING PLAN QUANTITIES:

BITUMINOUS MATERIALS TACK COAT)	2.05	TONS / CU YD
HMA RESURFACING	112	LBS / SQ YD / IN
MICRO-SURFACING, SINGLE PASS	20	LBS / SQ YD

ONLY THE PASSING LANE SHALL BE CLOSED FOR THE CENTERLINE WORK.

QUANTITIES FOR TRAFFIC CONTROL AND PROTECTION, STANDARD 701401, LOCATION 1 M.M. 205.0 TO M.M. 209.0 AND LOCATION 2 M.M. 212.0 TO M.M. 215.3 HAS BEEN PROVIDED IN THE PLANS. LANE CLOSURES OF BOTH LOCATIONS UNDER ONE TRAFFIC CONTROL SET-UP WILL NOT BE PERMITTED.

THE TEMPORARY PAVEMENT MARKING SHALL BE PLACED 3' OFF THE CENTERLINE IN THE DRIVING LANE PRIOR TO REMOVING THE EXISTING CENTERLINE STRIPE.

COMMITMENTS

HMA MIXTURE REQUIREMENT TABLE	
LOCATIONS:	I-55 POTHOLE AND CRACK REPAIR
MIXTURE USE(S):	HMA BINDER
BINDER GRADE (PG):	PG64-22
DESIGN AIR VOIDS:	4.0% @ N70
MIXTURE COMPOSITION: (MIXTURE GRADATION)	IL 9.5FG
FRICITION AGGREGATE:	
MIXTURE WEIGHT:	112.0 LB/SY/IN
QUALITY MANAGEMENT PROGRAM:	QCQA
SUBLOT SIZE:	NA
DENSITY TEST METHOD:	SATISFACTION OF ENGINEER

STATE OF ILLINOIS
DEPARTMENT OF TRANSPORTATION
DISTRICT THREE
AS BUILT INFORMATION

SUPERVISING CONSTRUCTION FIELD ENGINEER

RESIDENT ENGINEER / TECHNICIAN

START & END DATES
OF CONSTRUCTION:

INSPECTORS:

STATE OF ILLINOIS
DEPARTMENT OF TRANSPORTATION
DISTRICT THREE

PREPARED BY: _____
DISTRICT STUDIES & PLANS ENGINEER

DATE: _____

EXAMINED BY: _____
DISTRICT CONSTRUCTION ENGINEER

DISTRICT MATERIALS ENGINEER

DISTRICT OPERATIONS ENGINEER

**STATE OF ILLINOIS
DEPARTMENT OF TRANSPORTATION**

GENERAL NOTES

SCALE: SHEET 1 OF 1 SHEETS STA. TO STA.

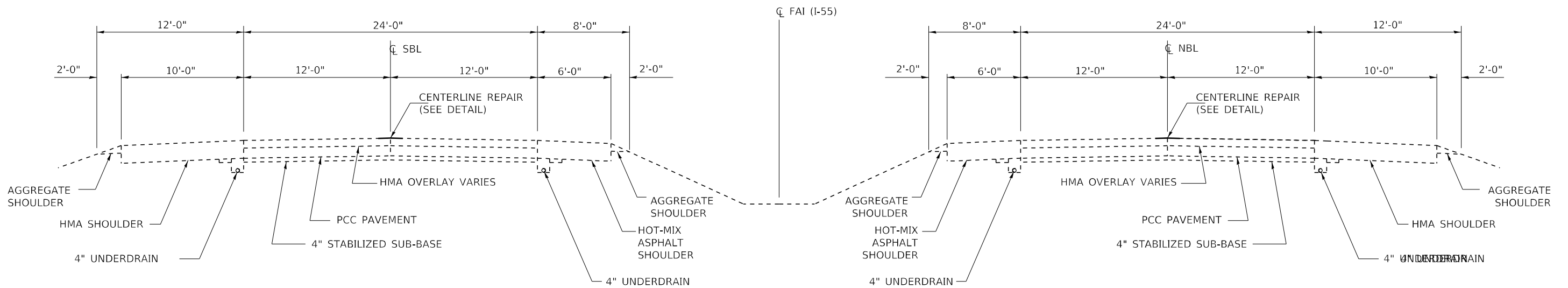
F.A.I. RTE.	SECTION	COUNTY	TOTAL SHEETS	SHEET NO.
55	53(2,3)F-5	LIVINGSTON	7	2
CONTRACT NO. 66L81				
ILLINOIS FED. AID PROJECT				

MODEL: Default
 FILE NAME: \\planningroom\dot\illinois\gov\PIW\DOT\Documents\DOT Office\District 3\Projects\0366681\0366681\0366681 - PLANS.dgn

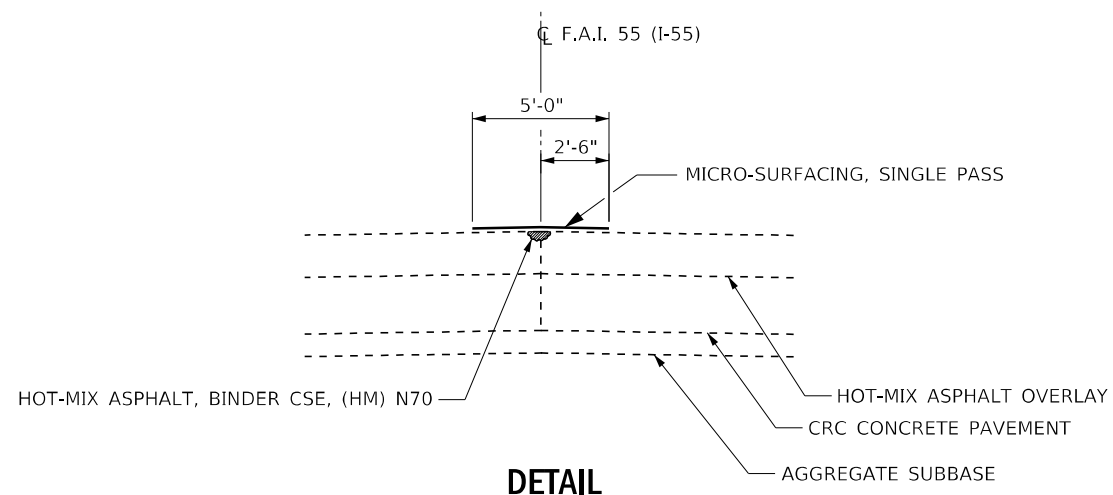
CODE NO.	ITEM	UNIT	TOTAL QUANTITY	CONSTRUCTION CODE	
				CONTRACT MAINTENANCE 100% STATE	ROADWAY
				0005	
				RURAL	
40400118	MICRO-SURFACING, SINGLE PASS	SQ YD	42823		42823
40600290	BITUMINOUS MATERIALS (TACK COAT)	POUND	19272		19272
40600901	HOT-MIX ASPHALT BINDER COURSE (HAND METHOD), N70	TON	189		189
67100100	MOBILIZATION	L SUM	1		1
70104205	TRAFFIC CONTROL AND PROTECTION, STANDARD 701401, LOCATION 1	EACH	1		1
70104210	TRAFFIC CONTROL AND PROTECTION, STANDARD 701401, LOCATION 2	EACH	1		1
70107025	CHANGEABLE MESSAGE SIGN	CAL DA	20		20
70300240	TEMPORARY PAVEMENT MARKING - LINE 6"	FOOT	19272		19272
* 78008230	POLYUREA PAVEMENT MARKING TYPE I - LINE 6"	FOOT	19272		19272
* 78100100	RAISED REFLECTIVE PAVEMENT MARKER	EACH	1923		1923
78300200	RAISED REFLECTIVE PAVEMENT MARKER REMOVAL	EACH	1923		1923
78300202	PAVEMENT MARKING REMOVAL - WATER BLASTING	SQ FT	9636		9636
X7030005	TEMPORARY PAVEMENT MARKING REMOVAL	SQ FT	9636		9636
* X7830074	GROOVING FOR RECESSED PAVEMENT MARKING 7"	FOOT	1923		1923

*= SPECIALTY ITEM

USER NAME = woodshank1	DESIGNED - RW	REVISED -	STATE OF ILLINOIS DEPARTMENT OF TRANSPORTATION	SUMMARY OF QUANTITIES		F.A.I. RTE.	SECTION	COUNTY	TOTAL SHEETS	SHEET NO.	
PLOT SCALE = 100,0000' / in.	CHECKED - YP	REVISED -				55	53(2,3)F-5	LIVINGSTON	7	3	
PLOT DATE = 4/24/2021	DATE - 2/22/2021	REVISED -		SCALE:	SHEET 1 OF 1 SHEETS	STA.	TO STA.	CONTRACT NO. 66L81			
						ILLINOIS FED. AID PROJECT					



TYPICAL SECTIONS



DETAIL

**STATE OF ILLINOIS
DEPARTMENT OF TRANSPORTATION**

TYPICAL SECTIONS

USER NAME = woodshank1	DESIGNED - RW	REVISED -
	DRAWN - RW	REVISED -
PLOT SCALE = 100,0000' / in.	CHECKED - YP	REVISED -
PLOT DATE = 4/24/2021	DATE - 2/22/2021	REVISED -

SCALE: SHEET 1 OF 1 SHEETS STA. TO STA.

F.A.I. RTE.	SECTION	COUNTY	TOTAL SHEETS	SHEET NO.
55	53(2,3)I-5	LIVINGSTON	7	4
CONTRACT NO. 66L81				
ILLINOIS FED. AID PROJECT				

MODEL: Default
FILE NAME: p:\pub\harrington.dwg
PROJECT: I-55 (I-55) - PLAN 5.dwg

SCHEDULE - MAINLINE CENTERLINE REPAIR M.M.205.0 TO M.M. 209.0

LOCATION			LENGTH	PAVEMENT WIDTH	HOT-MIX ASPHALT BINDER COURSE (HM) N70	BITUMINOUS MATERIALS (TACK COAT)	MICRO-SURFACING SINGLE PASS	PAVEMENT MARKING REMOVAL WATER BLASTING	TEMPORARY PAVEMENT MARKING LINE 6"	TEMPORARY PAVEMENT MARKING REMOVAL	GROOVING FOR RECESSED PAVEMENT MARKINGS 7"	POLYUREA PAVEMENT MARKING TYPE 1 LINE 6"	RAISED REFLECTIVE PAVEMENT MARKERS	RAISED REFLECTIVE PAVEMENT MARKER
M.M.	TO	M.M.	FOOT	FOOT	TON	POUNDS	SQ YD	SQ FT	FOOT	SQ FT	FOOT	FOOT	EACH	EACH
NORTHBOUND LANES														
205.0	TO	206.1	5808	5	12.9	1452	3227	726	1452	726	1452	1452	145	145
206.1	TO	206.2	528	5	1.2	132	293	66	132	66	132	132	13	13
206.2	TO	206.3	528	5	1.2	132	293	66	132	66	132	132	13	13
206.3	TO	206.5	1056	5	2.3	264	587	132	264	132	264	264	26	26
206.5	TO	206.6	528	5	1.2	132	293	66	132	66	132	132	13	13
206.6	TO	207.4	4224	5	9.4	1056	2347	528	1056	528	1056	1056	106	106
207.4	TO	207.5	528	5	1.2	132	293	66	132	66	132	132	13	13
207.5	TO	207.9	2112	5	4.7	528	1173	264	528	264	528	528	53	53
207.9	TO	208.0	528	5	1.2	132	293	66	132	66	132	132	13	13
208.0	TO	208.1	528	5	1.2	132	293	66	132	66	132	132	13	13
208.1	TO	208.9	4224	5	9.4	1056	2347	528	1056	528	1056	1056	106	106
208.9	TO	209.0	528	5	1.2	132	293	66	132	66	132	132	13	13
NBL SUBTOTAL			21120	60	47	5280	11732	2640	5280	2640	5280	5280	527	527
SOUTHBOUND LANES														
209.0	TO	208.8	1056	5	2.3	264	587	132	264	132	264	264	26	26
208.8	TO	207.8	5280	5	11.7	1320	2933	660	1320	660	1320	1320	132	132
207.8	TO	207.7	528	5	1.2	132	293	66	132	66	132	132	13	13
207.7	TO	205.0	14256	5	31.7	3564	7920	1782	3564	1782	3564	3564	356	356
SOUTHBOUND TOTAL			21120	20	47	5280	11733	2640	5280	2640	5280	5280	527	527
TOTALS			42240	80	94	10560	23465	5280	10560	5280	10560	10560	1054	1054

MODEL: Default
 FILE NAME: p:\pub\lhammon.dwt\illinois.gov\PIWDOT\Documents\DOT_Office\District 3\Projects\0366681\COADD\0366681_PlanS.dgn

USER NAME = woodshank1	DESIGNED - RW	REVISED -
	DRAWN - RW	REVISED -
PLOT SCALE = 100,0000' / in.	CHECKED - YP	REVISED -
PLOT DATE = 4/24/2021	DATE - 2/22/2021	REVISED -

**STATE OF ILLINOIS
DEPARTMENT OF TRANSPORTATION**

**SCHEDULES - MICRO-SURFACING
M.M. 205.0 TO M.M. 209.0**

SCALE: SHEET 1 OF 2 SHEETS STA. TO STA.

F.A.I. RTE.	SECTION	COUNTY	TOTAL SHEETS	SHEET NO.
55	53(2,3)F-5	LIVINGSTON	7	5
CONTRACT NO. 66L81				
ILLINOIS FED. AID PROJECT				

SCHEDULE MAINLINE CENTERLINE REPAIR SCHEDULE M.M. 212.0 TO M.M. 215.3

LOCATION			LENGTH	PAVEMENT WIDTH	HOT-MIX ASPHALT BINDER COURSE (HM) N70	BITUMINOUS MATERIALS (TACK COAT)	MICRO-SURFACING SINGLE PASS	PAVEMENT MARKING REMOVAL WATER BLASTING	TEMPORARY PAVEMENT MARKING LINE 6"	TEMPORARY PAVEMENT MARKING REMOVAL	GROOVING FOR RECESSED PAVEMENT MARKINGS 7"	POLYUREA PAVEMENT MARKING TYPE 1 LINE 6"	RAISED REFLECTIVE PAVEMENT MARKERS	RAISED REFLECTIVE PAVEMENT MARKER
M.M.	TO	M.M.	FOOT	FOOT	TON	POUNDS	SQ YD	SQ FT	FOOT	SQ FT	FOOT	FOOT	EACH	EACH
NORTHBOUND LANES														
212.0	TO	212.1	528	5	1.2	132	293	66	132	66	132	132	13	13
212.1	TO	212.2	528	5	1.2	132	293	66	132	66	132	132	13	13
212.2	TO	213.4	6336	5	14.1	1584	3520	792	1584	792	1584	1584	158	158
213.4	TO	213.5	528	5	1.2	132	293	66	132	66	132	132	13	13
213.5	TO	215.3	9504	5	21.1	2376	5280	1188	2376	1188	2376	2376	238	238
NBL SUBTOTAL			17424	25	38.8	4356	9679	2178	4356	2178	4356	4356	435	435
SOUTHBOUND LANES														
215.3	TO	215.2	528	5	1.2	132	293	66	132	66	132	132	13	13
215.2	TO	215.0	1056	5	2.3	264	587	132	264	132	264	264	26	26
215.0	TO	214.9	528	5	1.2	132	293	66	132	66	132	132	13	13
214.9	TO	214.5	2112	5	4.7	528	1173	264	528	264	528	528	53	53
214.5	TO	214.4	528	5	1.2	132	293	66	132	66	132	132	13	13
214.4	TO	214.3	528	5	1.2	132	293	66	132	66	132	132	13	13
214.3	TO	214.2	528	5	1.2	132	293	66	132	66	132	132	13	13
214.2	TO	213.9	1584	5	3.5	396	880	198	396	198	396	396	40	40
213.9	TO	213.8	528	5	1.2	132	293	66	132	66	132	132	13	13
213.8	TO	213.6	1056	5	2.3	264	587	132	264	132	264	264	26	26
213.6	TO	213.4	1056	5	2.3	264	587	132	264	132	264	264	26	26
213.4	TO	212.9	2640	5	5.9	660	1467	330	660	330	660	660	66	66
212.9	TO	212.8	528	5	1.2	132	293	66	132	66	132	132	13	13
212.8	TO	212.0	4224	5	9.4	1056	2347	528	1056	528	1056	1056	106	106
SBL SUBTOTAL			17424	70	39	4356	9679	2178	4356	2178	4356	4356	434	434
TOTAL			34848	95	78	8712	19358	4356	8712	4356	8712	8712	869	869

MODEL: Default
 FILE NAME: \\paulhammon.com\dtd\illinois\gov\PIWDOT\Documents\DOT_Offices\District 3\Projects\0366\81\CADD\0366\81 - PLAN.dwg

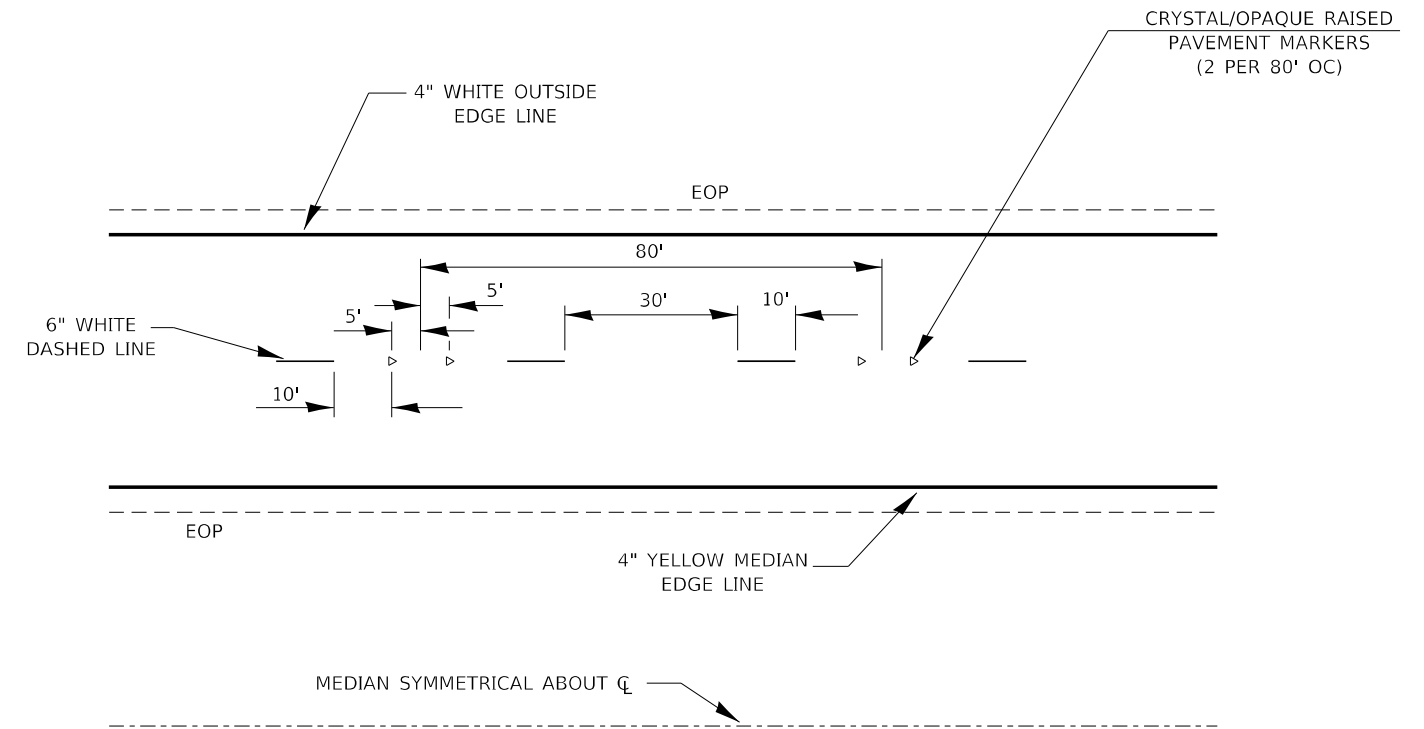
USER NAME = woodshank1	DESIGNED - RW	REVISED -
	DRAWN - RW	REVISED -
PLOT SCALE = 100,0000' / in.	CHECKED - YP	REVISED -
PLOT DATE = 4/24/2021	DATE - 2/22/2021	REVISED -

**STATE OF ILLINOIS
DEPARTMENT OF TRANSPORTATION**

**SCHEDULES - PAVEMENT MARKING
M.M. 205.0 TO M.M. 209.0**

SCALE: SHEET 2 OF 2 SHEETS STA. TO STA.

F.A.I. RTE.	SECTION	COUNTY	TOTAL SHEETS	SHEET NO.
55	53(2,3)F-5	LIVINGSTON	7	6
			CONTRACT NO. 66L81	
		ILLINOIS FED. AID PROJECT		



TYPICAL PAVEMENT MARKINGS

MODEL: Default
 FILE NAME: p:\pub\lhammon.dwt\illinois.gov\PWIDOT\Documents\IDOT_Offices\District 3\Projects\ID366L81\CADD\DATA\ID366L81 - PLANS.dwg

USER NAME = woodshank1	DESIGNED - RW	REVISED -
	DRAWN - RW	REVISED -
PLOT SCALE = 100,0000' / in.	CHECKED - YP	REVISED -
PLOT DATE = 4/24/2021	DATE - 2/22/2021	REVISED -

**STATE OF ILLINOIS
DEPARTMENT OF TRANSPORTATION**

PAVEMENT MARKING

SCALE: SHEET 1 OF 1 SHEETS STA. TO STA.

F.A.I. RTE.	SECTION	COUNTY	TOTAL SHEETS	SHEET NO.
55	53(2,3)F-5	LIVINGSTON	7	7
CONTRACT NO. 66L81				
ILLINOIS FED. AID PROJECT				