

STATE OF ILLINOIS
DEPARTMENT OF TRANSPORTATION
**PROPOSED
HIGHWAY PLANS**

F.A.P. RTE.	SECTION	COUNTY	TOTAL SHEETS	SHEET NO.
308	109RS-2	WHITESIDE	39	1
ILLINOIS			CONTRACT NO. 64M90	

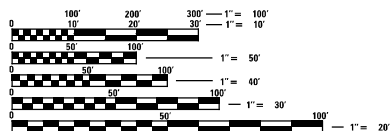
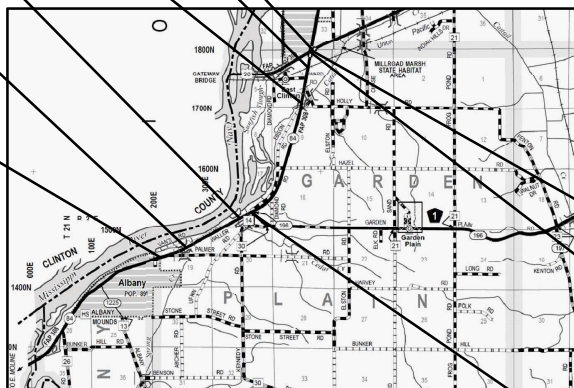
FOR INDEX OF SHEETS, SEE SHEET NO. 2

FAP ROUTE 308 (IL 84)
CLASSIFICATION: OTHER
PRINCIPAL ARTERIAL
ADT: 5,425 (2024)
TRUCKS: 12%
DHV-595
PV: 5185
SU: 355
MU: 330

- IMPROVEMENT ENDS**
STA. 391 + 18
- PAVING GAP**
STA. 378 + 40 TO
STA. 378 + 87
- PAVING GAP**
SN 098-0114
STA. 343 + 89 TO
STA. 345 + 65
- PAVING GAP**
SN 098-0022
STA. 225 + 35 TO
STA. 225 + 94
- PAVING GAP**
SN 098-0023
STA. 171 + 34 TO
STA. 171 + 88
- PROJECT/SECTION BEGINS**
STA. 142 + 90

FAP 308 (IL 84)
SECTION 109RS-2
PROJECT NHPP-5GJ9(457)
COLD MILLING, PAVEMENT PATCHING, HMA
RESURFACING
WHITESIDE COUNTY
U.S. 30 TO 0.2 MILES NORTH OF 10TH AVE. N
NORTH OF ALBANY
C-92-072-21

GARDEN PLAIN TOWNSHIP (4,9,16,17,19, & 20)



FULL SIZE PLANS HAVE BEEN PREPARED USING STANDARD ENGINEERING SCALES. REDUCED SIZED PLANS WILL NOT CONFORM TO STANDARD SCALES. IN MAKING MEASUREMENTS ON REDUCED PLANS, THE ABOVE SCALES MAY BE USED.

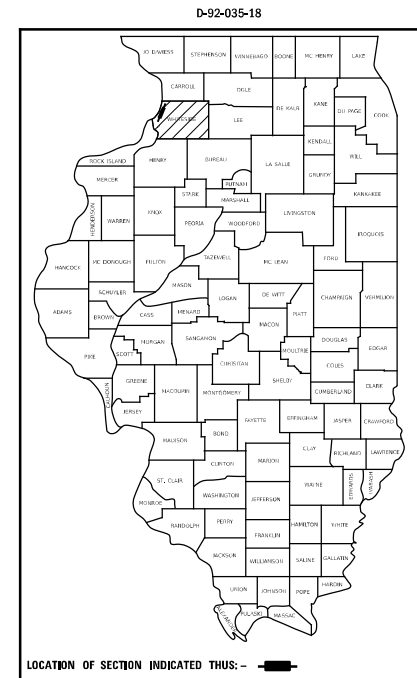
J.U.L.I.E.
JOINT UTILITY LOCATION INFORMATION FOR EXCAVATORS
1-800-892-0123
OR 811

PROJECT ENGINEER: ANDREW LEE
SQUAD LEADER: ROBERT BARTON (815) 284-5958
EMAIL: ROBERT.BARTON@ILLINOIS.GOV
CONTRACT NO. 64M90

GROSS LENGTH = 24,828 FT. = 4,702 MILE
PAVING GAPS = 336 FT. = 0.064 MILE
NET LENGTH = 24,492 FT. = 4.639 MILE

PROJECT / SECTION ENDS
STA. 391 + 07 (EB)
PROJECT / SECTION ENDS
STA. 389 + 89 (WB)

GARDEN PLAIN ROAD
BEGIN STA. 0 + 00 / STA. 239 + 20 (IL84)
END STA. 6 + 14



STATE OF ILLINOIS
DEPARTMENT OF TRANSPORTATION
SUBMITTED 05/12 2021
David Alford REGIONAL ENGINEER
June 25, 2021
Scott A. Elk
ENGINEER OF DESIGN AND ENVIRONMENT
June 25, 2021
Thomas J. ...
DIRECTOR OF HIGHWAYS PROJECT IMPLEMENTATION

PRINTED BY THE AUTHORITY
OF THE STATE OF ILLINOIS

INDEX OF SHEETS

1	COVER SHEET
2	INDEX OF SHEETS & HIGHWAY STANDARDS
3	GENERAL NOTES & COMMITMENTS
4-8	SUMMARY OF QUANTITIES
9-12	TYPICAL SECTIONS
13-16	SCHEDULE OF QUANTITIES
17	HMA SCHEDULE
18	ENTRANCES & SIDEROADS SCHEDULE
19-23	PATCH SCHEDULES
24-28	HORIZONTAL AND VERTICAL CONTROL PLANS
29-30	PAVEMENT MARKING DETAILS
31	SUBGRADE REPLACEMENT (DS 97.4)
32	HOT-MIX ASPHALT APPROACHES & MAILBOX RETURNS FOR TWO LIFTS (3P) RESURFACING PROJECTS (DS 47.2)
32	SAFETY EDGE (3P PROJECTS) (DS 49.2)
33-36	WORKZONE SIGN DETAILS (DS 34.1)
37-39	TYPICAL PAVEMENT MARKINGS (DS 41.1)

HIGHWAY STANDARDS

000001-08	STANDARD SYMBOLS, ABBREVIATIONS AND PATTERNS
001006	DECIMAL OF AN INCH AND OF A FOOT
420701-03	PAVEMENT WELDED WIRE REINFORCEMENT
442101-09	CLASS B PATCHES
442201-03	CLASS C AND D PATCHES
482011-03	HMA SHOULDER STRIPS/SHOULDERS WITH RESURFACING OR WIDENING AND RESURFACING PROJECTS
642006-01	SHOULDER RUMBLE STRIPS, 8 IN.
701001-02	OFF-RD OPERATIONS, 2L, 2W, MORE THAN 15' (4.5M) AWAY
701006-05	OFF-RD OPERATIONS, 2L, 2W, 15' (4.5M) TO 24' (600MM) FROM PAVEMENT EDGE
701011-04	OFF-RD MOVING OPERATIONS, 2L, 2W, DAY ONLY
701201-05	LANE CLOSURE, 2L, 2W, DAY ONLY, FOR SPEEDS > 45 MPH
701301-04	LANE CLOSURE, 2L, 2W, SHORT TIME OPERATIONS
701306-04	LANE CLOSURE, 2L, 2W, SLOW MOVING OPERATIONS DAY ONLY, FOR SPEEDS > 45 MPH
701311-03	LANE CLOSURE, 2L, 2W, MOVING OPERATIONS DAY ONLY
701336-07	LANE CLOSURE, 2L, 2W, WORK AREAS IN SERIES, FOR SPEEDS > 45 MPH
701901-08	TRAFFIC CONTROL DEVICES
780001-05	TYPICAL PAVEMENT MARKINGS
781001-04	TYPICAL APPLICATIONS RAISED REFLECTIVE PAVEMENT MARKERS

MODEL NUMBER: 04/04
FILE NAME: 111111



USER NAME = 102875	DESIGNED -	REVISED -
	DRAWN -	REVISED -
PLOT SCALE = SCALE: 1:1000	CHECKED -	REVISED -
PLOT DATE = 12-MAY-2021 10:14	DATE -	REVISED -

**STATE OF ILLINOIS
DEPARTMENT OF TRANSPORTATION**

INDEX OF SHEETS & HIGHWAY STANDARDS

SCALE: SHEET 1 OF 1 SHEETS STA. TO STA.

F.A.P. SITE	SECTION	COUNTY	TOTAL SHEETS	SHEET NO.
308	109RS-2	WHITESIDE	39	2
CONTRACT NO. 64M90				
ILLINOIS FED. AID PROJECT				

GENERAL NOTES:

- CLOSED EXPANSION JOINTS ON JOINTED PAVEMENTS SHALL BE RE-ESTABLISHED DURING THE PATCHING OPERATIONS, CLASS B PATCHES - WHEN THE PAVEMENT REQUIRES PATCHING AT THE LOCATION OF THE EXPANSION JOINT, A NEW JOINT SHOULD BE ESTABLISHED USING A DOWELLED EXPANSION PATCH AS SHOWN ON HIGHWAY STANDARD 442101. WHEN THE JOINT IS CLOSED, BUT DOES NOT REQUIRE PATCHING, AN EXPANSION JOINT MAY BE FORMED BY SAWING THE PAVEMENT AND FILLING THE SAW CUT WITH A PREFORMED EXPANSION JOINT FILLER MEETING THE REQUIREMENTS OF SECTION 1051 OF THE STANDARD SPECIFICATIONS AS SHOWN ON STANDARD 420001.
- WHEN LAYING OUT FOR PATCHING, THE MINIMUM DISTANCE BETWEEN NEW PATCHES (SAW CUT TO SAW CUT) SHALL BE 15 FEET. WHEN PATCH SPACING IS LESS THAN 15 FEET, THE PAVEMENT BETWEEN PATCHES SHALL ALSO BE REMOVED AND REPLACED.
- THE EXISTING HOT-MIX ASPHALT ON PRIVATE AND COMMERCIAL ENTRANCES SHALL BE BLADED OFF OF MILLED AND DISPOSED OF OUTSIDE THE PROJECT LIMITS, THIS COULD BE THE ENTIRE ENTRANCE OR TAPERED AT THE END DEPENDING ON IF THE MAINLINE IS RESURFACED OR MILLED AND RESURFACED. THE COST OF THE BLADING, MILLING, ROLLING, AND DISPOSAL IS INCLUDED IN THE CONTRACT UNIT PRICE FOR INCIDENTAL HOT-MIX ASPHALT SURFACING.
- THE DROP OFF THAT OCCURS AT ENTRANCE EDGES AS A RESULT OF RESURFACING OF THE ENTRANCE SHALL BE CORRECTED USING AGGREGATE SHOULDER MATERIAL, THIS WORK SHALL BE PAID FOR BY THE TON FOR AGGREGATE SHOULDERS OF THE TYPE SPECIFIED IN THE PLANS.
- THE CONTRACTOR SHALL FILL AND COMPACT PAVEMENT CORE HOLES USING HOT MIX ASPHALT. THIS WORK SHALL BE INCLUDED IN THE CONTRACT UNIT PRICE FOR INCIDENTAL HOT-MIX ASPHALT SURFACING.
- THE FOLLOWING MIXTURE REQUIREMENTS ARE APPLICABLE FOR THIS PROJECT:

LOCATION AND MIXTURE USE(S):	RESURFACING		SHOULDER	RESURFACING - GRAIN ELEVATOR SHOULDER
	SURFACE	BINDER	SURFACE	SURFACE
PG:	PG 58-28	PG 58-28	PG 58-28	SBS PG 76-22
DESIGN AIR VOIDS:	4.0 @ N50	4.0 @ N50	4.0 @ N50	4.0 @ N80
MIXTURE COMPOSITION (GRADATION MIXTURE):	IL-9.5	IL-9.5FG	IL-9.5	SMA 12.5
FRICTION AGGREGATE:	D	NA	C	E
20 YEAR ESAL:	NA	NA	NA	0.0
MIXTURE UNIT WEIGHT:	112 LBS/SY/IN	NA	112 LBS/SY/IN	117 LBS/SY/IN
QUALITY MANAGEMENT PROGRAM TO BE USED:	QCP	QCP	QC/OA	QC/OA
SUBLOT TONNAGE:	1000	1000	NA	NA
NUMBER OF ROLLER PASSES:	NA	NA	NA	NA

- THE CONTRACTOR WILL BE REQUIRED TO FURNISH 5 1/2" HIGH BRASS STENCILS AS APPROVED BY THE ENGINEER AND INSTALL STATIONING AT 250' INTERVALS. STATIONING SHALL BE PLACED ON BOTH LANES OF 2-LANE HIGHWAYS AND ON THE OUTSIDE LANES IN BOTH DIRECTIONS ON 4-LANE HIGHWAYS. THE STATIONS SHALL BE PLACED 6" INSIDE THE PAVEMENT MARKING EDGE SO THEY CAN BE READ FROM THE SHOULDER. THIS WORK WILL BE INCLUDED IN THE COST OF THE FINAL PAVEMENT SURFACE.
- THE AREA TO BE TACKED OR PRIMED SHALL BE LIMITED TO THAT WHICH CAN BE COVERED WITH HMA ON THE NEXT DAY'S PRODUCTION, BUT NO MORE THAN FIVE DAYS IN ADVANCE OF THE PLACEMENT OF THE HMA, UNLESS APPROVED BY THE ENGINEER.
- PAVEMENT MARKING SHALL BE DONE ACCORDING TO STANDARD 780001, EXCEPT AS FOLLOWS:
 - ALL WORDS, SUCH AS ONLY, SHALL BE 8 FEET HIGH.
 - ALL NON-FREEWAY ARROWS SHALL BE THE LARGE SIZE.
 - THE DISTANCE BETWEEN YELLOW NO-PASSING LINES SHALL BE 8 INCHES, NOT 7 INCHES, AS SHOWN IN THE DETAIL OF TYPICAL LANE AND EDGE LINES.
 - CENTERLINE SKIP DASH PAVEMENT MARKING ON MULTI-LANE DIVIDED, MULTI-LANE UNDIVIDED, AND ONE-WAY ROADWAY SHALL BE ACCORDING TO DISTRICT STANDARD 41.1.

COMMITMENTS

- NONE.

UTILITIES

- THE FOLLOWING LISTED UTILITIES LOCATED WITHIN THE PROJECT LIMITS OR IMMEDIATELY ADJACENT TO THE PROJECT CONSTRUCTION LIMITS ARE MEMBERS OF JULIE:

MR. MITCH HANCOCK	MEDIACOM	CATV	(309) 743-4750
MR. AMIR MAHUMTAGI	COMMONWEALTH EDISON COMPANY	ELECTRIC	(630) 437-2212
MR. JASON HOGAN	ALLIANT ENERGY	GAS	(608) 458-4871
MR. MARK WILD	JO-CARROLL ENERGY	ELECTRIC	(815) 858-5522
MR. JAMES BURTON	US SPRINT	TELEPHONE	(708) 955-6659
MR. NATE SCHROEDER	VILLAGE OF ALBANY	WATER/SEWER	(309) 887-4064
MR. DON BELMORE	FRONTIER (NORTH)	TELEPHONE	(815) 544-6171
MR. DEREK BROEKER	LEVEL 3 (CENTURY LINK)	COMMUNICATIONS	(636) 887-4747

IDOT IS NOT A MEMBER OF JULIE. IF YOU ARE NEAR ANY OVERHEAD LIGHTING, INTERSECTION LIGHTING OR TRAFFIC SIGNALS, CONTACT THE IDOT TRAFFIC OFFICE AT 815/284-5469 AT LEAST 48 HOURS PRIOR TO WORK.

MODEL NUMBER/NAME FILE NUMBER/FILE



USER NAME = KUSERS	DESIGNED -	REVISED -
PLOT SCALE = SCALE: 1:1000	DRAWN -	REVISED -
PLOT DATE = 11-MAY-2021 09:09	CHECKED -	REVISED -
	DATE -	REVISED -

**STATE OF ILLINOIS
DEPARTMENT OF TRANSPORTATION**

GENERAL NOTES & COMMITMENTS

SCALE: SHEET 1 OF 1 SHEETS STA. TO STA.

F.A.P. SITE	SECTION	COUNTY	TOTAL SHEETS	SHEET NO.
308	109R5-2	WHITESIDE	39	3
CONTRACT NO. 64M90				
ILLINOIS FED. AID PROJECT				

SUMMARY OF QUANTITIES

CODE NO.	ITEM	UNIT	TOTAL QUANTITY	CONSTR. CODE	
				FED 80% / STATE 20%	
				ROADWAY	
				0005	RURAL
30300001	AGGREGATE SUBGRADE IMPROVEMENT	CU YD	69	69	
40600290	BITUMINOUS MATERIALS (TACK COAT)	FOUND	54613	54613	
40600900	HOT-MIX ASPHALT BINDER COURSE (HAND METHOD), N50	TON	18	18	
40600985	PORTLAND CEMENT CONCRETE SURFACE REMOVAL - BUTT JOINT	SQ YD	37	37	
40600990	TEMPORARY RAMP	SQ YD	873	873	
40602965	HOT-MIX ASPHALT BINDER COURSE, IL-9.5FG, N50	TON	5954	5954	
40604050	HOT-MIX ASPHALT SURFACE COURSE, IL-9.5, MIX "C", N50	TON	745	745	
40604060	HOT-MIX ASPHALT SURFACE COURSE, IL-9.5, MIX "D", N50	TON	5954	5954	
40605034	POLYMERIZED HOT-MIX ASPHALT SURFACE COURSE, STONE MATRIX ASPHALT, 12.5, MIX "E", N80	TON	358	358	
40800050	INCIDENTAL HOT-MIX ASPHALT SURFACING	TON	779	779	
42000060	WELDED WIRE REINFORCEMENT	SQ YD	837	837	
44000155	HOT-MIX ASPHALT SURFACE REMOVAL, 1 1/2"	SQ YD	6016	6016	
44000157	HOT-MIX ASPHALT SURFACE REMOVAL, 2"	SQ YD	3060	3060	
44000158	HOT-MIX ASPHALT SURFACE REMOVAL, 2 1/4"	SQ YD	2833	2833	

MODEL NUMBER: 64M90
FILE NAME: 64M90

ARORA AND ASSOCIATES, P.C.
Consulting Engineers

USER NAME = sks89s	DESIGNED -	REVISED -
PLOT SCALE = SCALE: 1/2	DRAWN -	REVISED -
PLOT DATE = 12-MAY-2021 10:14	CHECKED -	REVISED -
	DATE -	REVISED -

**STATE OF ILLINOIS
DEPARTMENT OF TRANSPORTATION**

SUMMARY OF QUANTITIES

SCALE: NTS SHEET 1 OF 5 SHEETS STA. TO STA.

F.A.P. SITE	SECTION	COUNTY	TOTAL SHEETS	SHEET NO.
308	109-R52	WHITESIDE	39	4
CONTRACT NO. 64M90				
ILLINOIS FED. AID PROJECT				

SUMMARY OF QUANTITIES

CODE NO.	ITEM	UNIT	TOTAL QUANTITY	CONSTR. CODE	
				FED 80% / STATE 20%	
				ROADWAY	
				0005	RURAL
44000160	HOT-MIX ASPHALT SURFACE REMOVAL, 2 3/4"	SQ YD	70885	70885	
44200919	CLASS B PATCHES, TYPE II, 7 INCH	SQ YD	49	49	
44200924	CLASS B PATCHES, TYPE III, 7 INCH	SQ YD	49	49	
44200926	CLASS B PATCHES, TYPE IV, 7 INCH	SQ YD	49	49	
44201003	CLASS B PATCHES, TYPE I, 13 INCH	SQ YD	12	12	
44201007	CLASS B PATCHES, TYPE II, 13 INCH	SQ YD	2135	2135	
44201011	CLASS B PATCHES, TYPE III, 13 INCH	SQ YD	45	45	
44201013	CLASS B PATCHES, TYPE IV, 13 INCH	SQ YD	672	672	
44201294	CLASS B PATCH - EXPANSION JOINT	FOOT	10576	10576	
44201297	DOWEL BARS 1"	EACH	5170	5170	
44201798	CLASS D PATCHES, TYPE I, 13 INCH	SQ YD	223	223	
44201807	CLASS D PATCHES, TYPE III, 13 INCH	SQ YD	39	39	
44201809	CLASS D PATCHES, TYPE IV, 13 INCH	SQ YD	300	300	
44213200	SAW CUTS	FOOT	8168	8168	

MODEL NUMBER: 6484
FILE NAME: 111111



USER NAME = sks8rs	DESIGNED -	REVISED -
PLOT SCALE = SCALE: 1/2	DRAWN -	REVISED -
PLOT DATE = 12-MAY-2021 10:15	CHECKED -	REVISED -
	DATE -	REVISED -

**STATE OF ILLINOIS
DEPARTMENT OF TRANSPORTATION**

SUMMARY OF QUANTITIES

SCALE: SHEET 2 OF 5 SHEETS STA. TO STA.

F.A.P. SITE	SECTION	COUNTY	TOTAL SHEETS	SHEET NO.
308	109R5-2	WHITESIDE	39	5
CONTRACT NO. 64M90				
ILLINOIS FED. AID PROJECT				

SUMMARY OF QUANTITIES

CODE NO.	ITEM	UNIT	TOTAL QUANTITY	CONSTR. CODE	
				FED 80% / STATE 20%	
				ROADWAY	
				0005	RURAL
44213204	TIE BARS 3/4"	EACH	1597	1597	
48102100	AGGREGATE WEDGE SHOULDER, TYPE B	TON	2041	2041	
64200108	SHOULDER RUMBLE STRIPS, 8 INCH	FOOT	7100	7100	
67000400	ENGINEER'S FIELD OFFICE, TYPE A	CAL MO	3	3	
67100100	MOBILIZATION	L SUM	1	1	
70100450	TRAFFIC CONTROL AND PROTECTION, STANDARD 701201	L SUM	1	1	
70100460	TRAFFIC CONTROL AND PROTECTION, STANDARD 701306	L SUM	1	1	
70100600	TRAFFIC CONTROL AND PROTECTION, STANDARD 701336	L SUM	1	1	
70103815	TRAFFIC CONTROL SURVEILLANCE	CAL DA	30	30	
70300100	SHORT TERM PAVEMENT MARKING	FOOT	7716	7716	
70300150	SHORT TERM PAVEMENT MARKING REMOVAL	SQ FT	860	860	
70300210	TEMPORARY PAVEMENT MARKING LETTERS AND SYMBOLS	SQ FT	124	124	
70300220	TEMPORARY PAVEMENT MARKING - LINE 4"	FOOT	61390	61390	
70300250	TEMPORARY PAVEMENT MARKING - 1 INCH 8"	FOOT	91	91	

MODEL NUMBER: 64M90
FILE NAME: 64M90.DWG



USER NAME = SKSERS	DESIGNED -	REVISED -
PLOT SCALE = SCALE: 1:2	DRAWN -	REVISED -
PLOT DATE = 12-MAY-2021 10:16	CHECKED -	REVISED -
	DATE -	REVISED -

**STATE OF ILLINOIS
DEPARTMENT OF TRANSPORTATION**

SUMMARY OF QUANTITIES

SCALE: SHEET 3 OF 5 SHEETS STA. TO STA.

F.A.P. SITE	SECTION	COUNTY	TOTAL SHEETS	SHEET NO.
308	109R5-2	WHITESIDE	39	6
CONTRACT NO. 64M90				
ILLINOIS FED. AID PROJECT				

SUMMARY OF QUANTITIES

CODE NO.	ITEM	UNIT	TOTAL QUANTITY	CONSTR. CODE	
				FED 80% / STATE 20%	
				ROADWAY	
				0005	RURAL
70300260	TEMPORARY PAVEMENT MARKING - LINE 12"	FOOT	33	33	
70300280	TEMPORARY PAVEMENT MARKING - LINE 24"	FOOT	78	78	
* 78009000	MODIFIED URETHANE PAVEMENT MARKING - LETTERS AND SYMBOLS	SQ FT	124	124	
* 78009004	MODIFIED URETHANE PAVEMENT MARKING - LINE 4"	FOOT	61390	61390	
* 78009008	MODIFIED URETHANE PAVEMENT MARKING - LINE 8"	FOOT	91	91	
* 78009012	MODIFIED URETHANE PAVEMENT MARKING - LINE 12"	FOOT	58	58	
* 78009024	MODIFIED URETHANE PAVEMENT MARKING - LINE 24"	FOOT	78	78	
* 78100100	RAISED REFLECTIVE PAVEMENT MARKER	EACH	312	312	
78300200	RAISED REFLECTIVE PAVEMENT MARKER REMOVAL	EACH	304	304	
X4400196	HOT-MIX ASPHALT SURFACE REMOVAL, SPECIAL	SQ YD	26	26	
* X7830060	GROOVING FOR RECESSED PAVEMENT MARKING, LETTERS AND SYMBOLES	SQ FT	132	132	
* X7830070	GROOVING FOR RECESSED PAVEMENT MARKING 5"	FOOT	61390	61390	
* X7830076	GROOVING FOR RECESSED PAVEMENT MARKING 9"	FOOT	91	91	
* X7830078	GROOVING FOR RECESSED PAVEMENT MARKING 13"	FOOT	58	58	

※ SPECIALITY ITEMS

MODEL NUMBER: 64M90
FILE NAME: 64M90

ARORA AND ASSOCIATES, P.C.
Consulting Engineers

USER NAME = S42876	DESIGNED -	REVISED -
PLOT SCALE = SCALE: 1/2	DRAWN -	REVISED -
PLOT DATE = 12-MAY-2021 10:16	CHECKED -	REVISED -
	DATE -	REVISED -

**STATE OF ILLINOIS
DEPARTMENT OF TRANSPORTATION**

SUMMARY OF QUANTITIES

SCALE: SHEET 4 OF 5 SHEETS STA. TO STA.

F.A.P. SITE	SECTION	COUNTY	TOTAL SHEETS	SHEET NO.
308	109R5-2	WHITESIDE	39	7
CONTRACT NO. 64M90				
ILLINOIS FED. AID PROJECT				

SUMMARY OF QUANTITIES

CODE NO.	ITEM	UNIT	TOTAL QUANTITY	CONSTR. CODE	
				FED 80% / STATE 20%	
				ROADWAY	
				0005	RURAL
*	X7830090	GROOVING FOR RECESSED PAVEMENT MARKING 25"	FOOT	78	78
	Z0028415	GEOTECHNICAL REINFORCEMENT	SQ YD	412	412
	Z0033700	LONGITUDINAL JOINT SEALANT	FOOT	23834	23834
	Z0034105	MATERIAL TRANSFER DEVICE	TON	11908	11908
	Z0040315	PILOT CAR	CADAY	4	4
	Z0048665	RAILROAD PROTECTIVE LIABILITY INSURANCE	L SUM	1	1

* SPECIALTY ITEMS

MODEL: S:\PROJECTS\101113
FILE NAME: I7E113



USER NAME = SUSER5	DESIGNED -	REVISED -
	DRAWN -	REVISED -
PLOT SCALE = SCALE: 1:2	CHECKED -	REVISED -
PLOT DATE = 12-MAY-2021 10:17	DATE -	REVISED -

**STATE OF ILLINOIS
DEPARTMENT OF TRANSPORTATION**

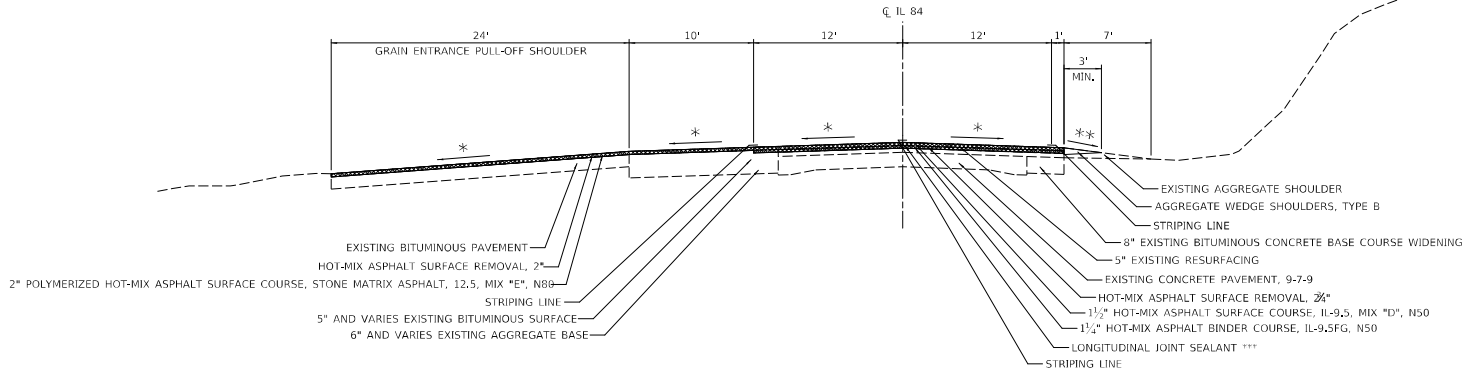
SUMMARY OF QUANTITIES

SCALE: SHEET 5 OF 5 SHEETS STA. TO STA.

F.A.P. STATE	SECTION	COUNTY	TOTAL SHEETS	SHEET NO.
308	109RS-2	WHITESIDE	39	8
				CONTRACT NO. 64M90
ILLINOIS FED. AID PROJECT				

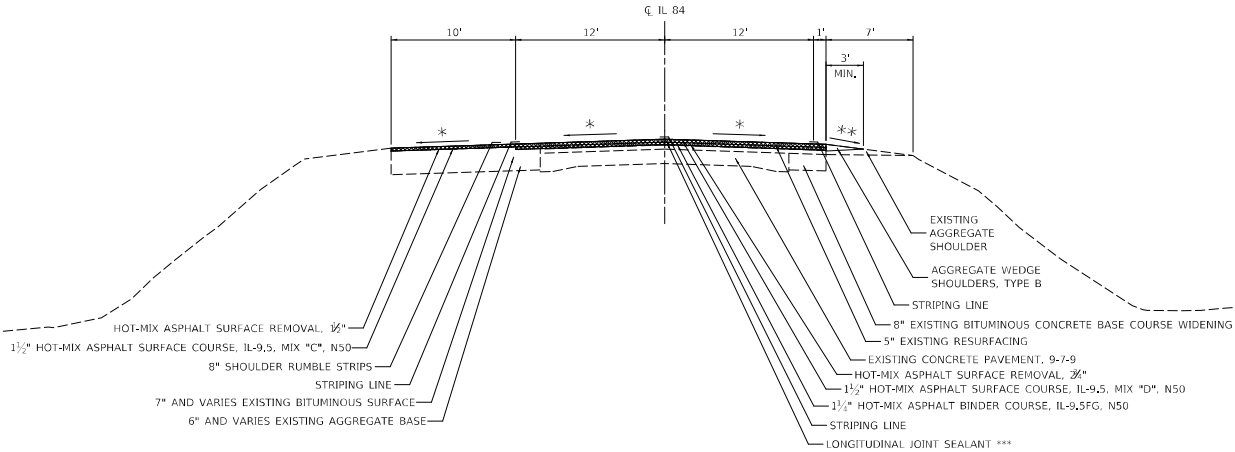
TYPICAL SECTION

STA. 142+90 - STA. 151+00



TYPICAL SECTION

STA. 151+00 - STA. 164+00



LEGEND

- SURFACE REMOVAL
- * MATCH EXISTING CROSS SLOPE
- RATE OF APPLICATION: 112 LB/SQ YD/IN FOR SURFACE AND BINDER COURSE
- RATE OF APPLICATION: 117 LB/SQ YD/IN FOR STONE MATRIX ASPHALT SURFACE COURSE
- ** 9% MAX. SLOPE
- *** LONGITUDINAL JOINT SEALER SHALL BE PLACED ON TOP OF HMA BINDER COURSE

MODEL NUMBER/NAME
FILE NAME: ILLIUS

ARORA AND ASSOCIATES, P.C.
Consulting Engineers

USER NAME = SRSRS	DESIGNED -	REVISED -
PLOT SCALE = SCALE: 1/3200	DRAWN -	REVISED -
PLOT DATE = 12-MAY-2021 10:18	CHECKED -	REVISED -
	DATE -	REVISED -

STATE OF ILLINOIS
DEPARTMENT OF TRANSPORTATION

IL 84
TYPICAL SECTION

SCALE: SHEET 1 OF 4 SHEETS STA. TO STA.

F.A.P. SITE	SECTION	COUNTY	TOTAL SHEETS	SHEET NO.
308	1094S-2	WHITESIDE	39	9
CONTRACT NO. 64M90				
ILLINOIS FED. AID PROJECT				

TYPICAL SECTION

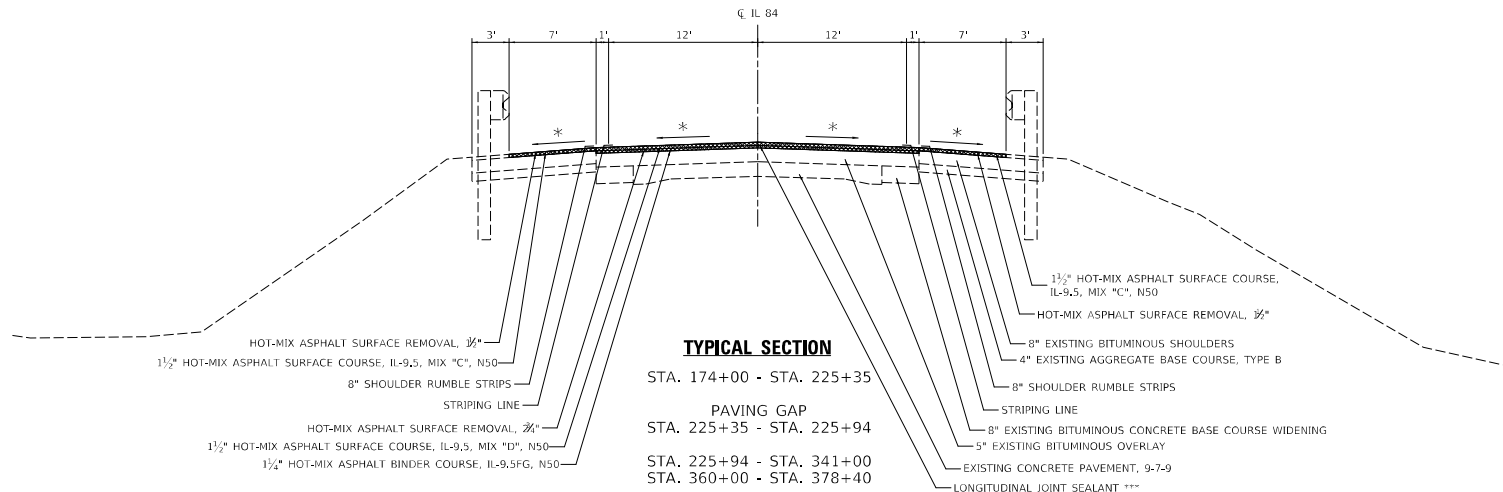
STA. 164+00 - STA. 171+34

PAVING GAP
STA. 171+34 - STA. 171+88

STA. 341+00 - STA. 343+89

PAVING GAP
STA. 343+89 - STA. 345+65

STA. 345+65 - STA. 360+00



TYPICAL SECTION

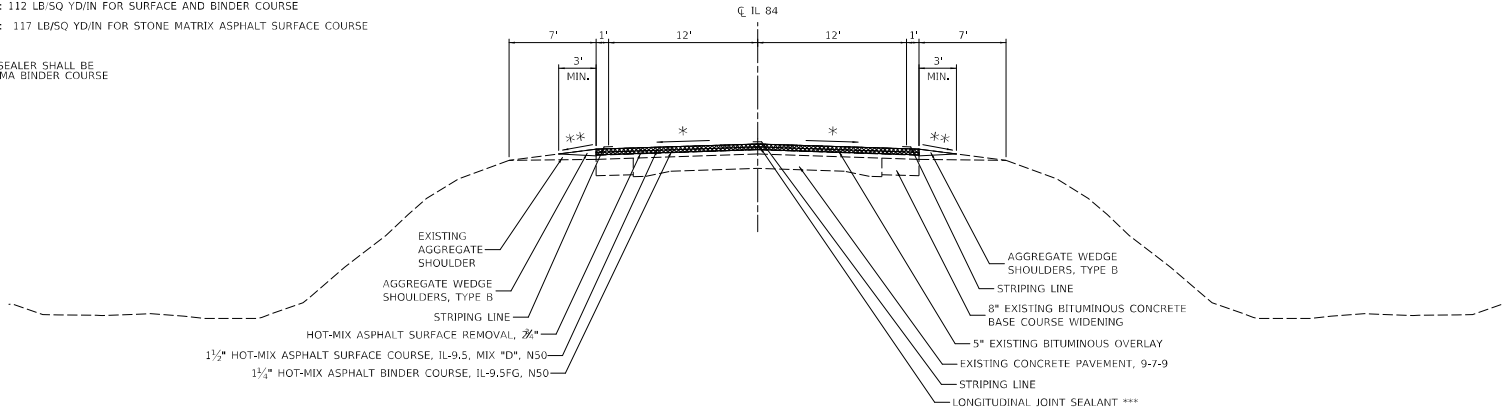
STA. 174+00 - STA. 225+35

PAVING GAP
STA. 225+35 - STA. 225+94


STA. 225+94 - STA. 341+00
STA. 360+00 - STA. 378+40

PAVING GAP
STA. 378+40 - STA. 378+87

STA. 378+87 - STA. 384+00



LEGEND

-  SURFACE REMOVAL
- * MATCH EXISTING CROSS SLOPE
- RATE OF APPLICATION: 112 LB/SQ YD/IN FOR SURFACE AND BINDER COURSE
- RATE OF APPLICATION: 117 LB/SQ YD/IN FOR STONE MATRIX ASPHALT SURFACE COURSE
- ** 9% MAX. SLOPE
- **-* LONGITUDINAL JOINT SEALER SHALL BE PLACED ON TOP OF HMA BINDER COURSE

MODEL NUMBER/NAME
FILE NAME: ILL84

ARORA AND ASSOCIATES, P.C.
Consulting Engineers

USER NAME = SRSERS	DESIGNED -	REVISED -
	DRAWN -	REVISED -
PLOT SCALE = SCALE: 1/3200	CHECKED -	REVISED -
PLOT DATE = 12-MAY-2021 10:18	DATE -	REVISED -

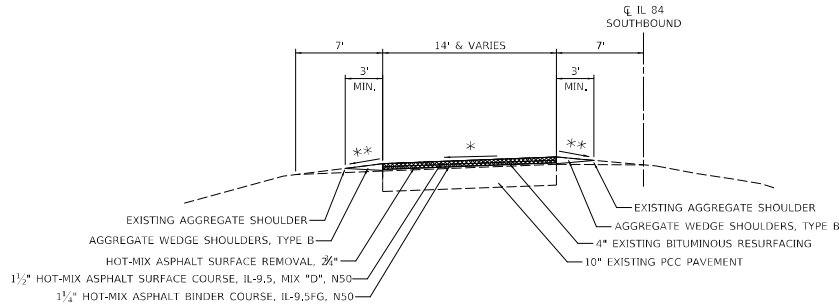
STATE OF ILLINOIS
DEPARTMENT OF TRANSPORTATION

IL 84	
TYPICAL SECTION	
SCALE:	SHEET 2 OF 4 SHEETS STA. TO STA.

F.A.P. SITE	SECTION	COUNTY	TOTAL SHEETS	SHEET NO.
308	1094S-2	WHITESIDE	39	10
CONTRACT NO. 64M90				
ILLINOIS FED. AID PROJECT				

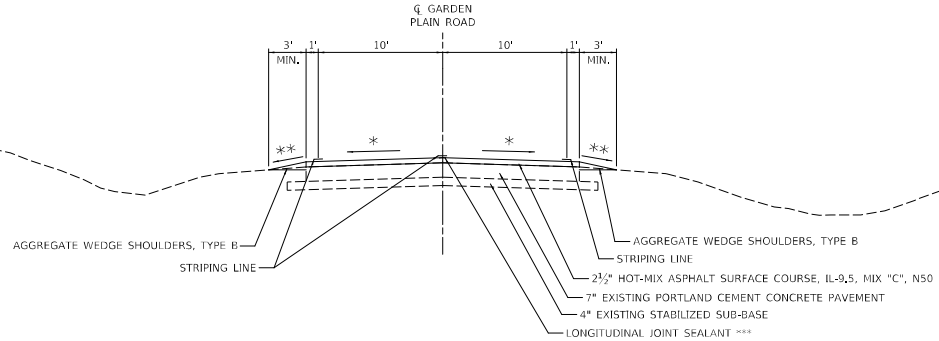
TYPICAL SECTION

STA. 384+00 - STA. 389+99 SOUTHBOUND
 STA. 384+00 - STA. 391+07 NORTHBOUND




TYPICAL SECTION

STA. 0+12 - STA. 6+14



LEGEND

-  SURFACE REMOVAL
- * MATCH EXISTING CROSS SLOPE
- RATE OF APPLICATION: 112 LB/SQ YD/IN FOR SURFACE AND BINDER COURSE
- RATE OF APPLICATION: 117 LB/SQ YD/IN FOR STONE MATRIX ASPHALT SURFACE COURSE
- ** 9% MAX. SLOPE
- *** LONGITUDINAL JOINT SEALER SHALL BE PLACED ON TOP OF HMA BINDER COURSE

MODEL NUMBER: 6484
FILE NAME: 111111

ARORA AND ASSOCIATES, P.C.
Consulting Engineers

USER NAME = SRSERS	DESIGNED -	REVISED -
PLOT SCALE = SCALE: 1/3200	DRAWN -	REVISED -
PLOT DATE = 12-MAY-2021 10:18	CHECKED -	REVISED -
	DATE -	REVISED -

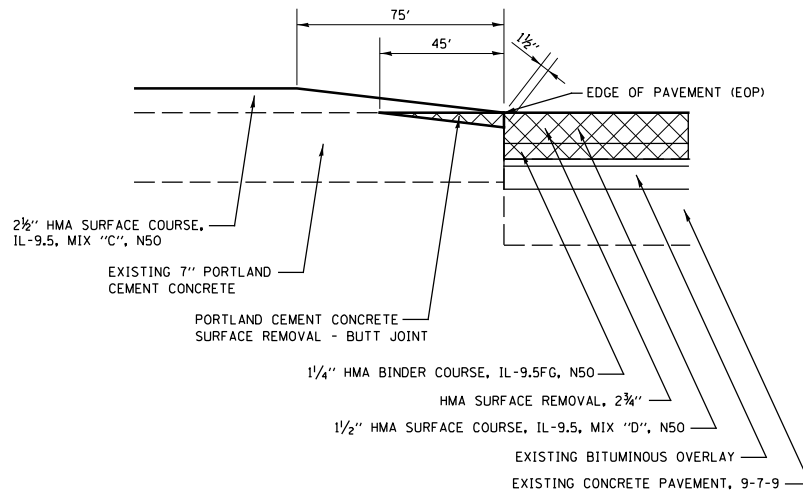
STATE OF ILLINOIS
DEPARTMENT OF TRANSPORTATION

IL 84
TYPICAL SECTION

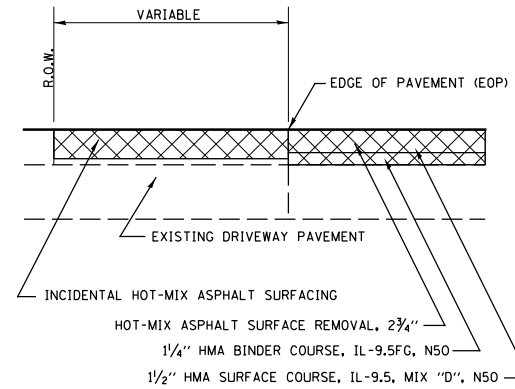
SCALE: SHEET 3 OF 4 SHEETS STA. TO STA.

F.A.P. SITE	SECTION	COUNTY	TOTAL SHEETS	SHEET NO.
308	1094S-2	WHITESIDE	39	11
CONTRACT NO. 64M90				
ILLINOIS			FED. AID PROJECT	

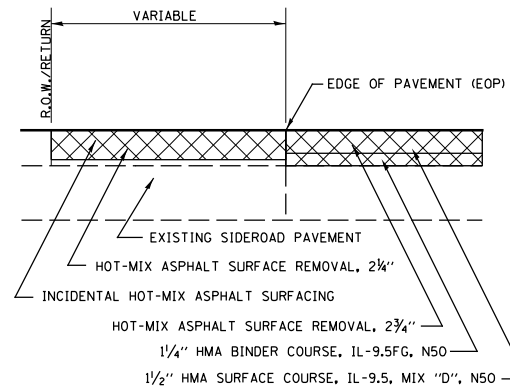
GARDEN PLAIN ROAD - TAPER



ENTRANCES - MILLED ASPHALT SECTIONS



SIDERROADS - MILLED ASPHALT SECTIONS



LEGEND
 SURFACE REMOVAL

MODEL NUMBER: 6484
 FILE NAME: 6484.DWG

ARORA AND ASSOCIATES, P.C.
 Consulting Engineers

USER NAME = 6484ERS	DESIGNED -	REVISED -
PLOT SCALE = SCALE: 1/3200	DRAWN -	REVISED -
PLOT DATE = 12-04-2021 13:04	CHECKED -	REVISED -
	DATE -	REVISED -

STATE OF ILLINOIS
DEPARTMENT OF TRANSPORTATION

IL 84	
TYPICAL SECTION	
SCALE:	SHEET 4 OF 4 SHEETS STA. TO STA.

F.A.P. SITE = 308	SECTION = 1094S-2	COUNTY = WHITESIDE	TOTAL SHEETS = 39	SHEET NO. = 12
CONTRACT NO. 64M90				
ILLINOIS FED. AID PROJECT				

30300001 AGGREGATE SUBGRADE IMPROVEMENT

<u>CJ. YD.</u>	<u>LOCATION</u>	<u>OFFSET</u>	<u>REMARKS</u>
	<u>IL 84</u>		
67	142+90 -	389+99	AS NEEDED FOR PATCHING
	<u>GARDEN PLAIN RD</u>		
2	0+12 -	6+14	
69	TOTAL		

70300100 SHORT TERM PAVEMENT MARKING

<u>FOOT</u>	<u>LOCATION</u>	<u>OFFSET</u>	<u>REMARKS</u>
	<u>IL 84</u>		
120	142+90 -	156+00	YELLOW CENTER SKIP DASH
116	156+00 -	168+50	YELLOW CENTER SKIP DASH
96	158+00 -	168+50	YELLOW CENTER SKIP DASH
12	168+50 -	169+50	YELLOW CENTER SKIP DASH
80	169+50 -	178+00	YELLOW CENTER SKIP DASH
80	169+50 -	178+00	YELLOW CENTER SKIP DASH
1748	178+00 -	370+00	YELLOW CENTER SKIP DASH
72	370+00 -	377+50	YELLOW CENTER SKIP DASH
72	370+00 -	377+50	YELLOW CENTER SKIP DASH
40	377+50 -	381+50	YELLOW CENTER SKIP DASH
24	381+50 -	384+00	YELLOW CENTER SKIP DASH
	<u>GARDEN PLAIN RD</u>		
56	0+12 -	6+14	YELLOW CENTER SKIP DASH
56	0+12 -	6+14	YELLOW CENTER SKIP DASH
7716	TOTAL (THREE APPLICATIONS)		

70300150 SHORT TERM PAVEMENT MARKING REMOVAL

<u>SQ. FT.</u>	<u>LOCATION</u>	<u>OFFSET</u>	<u>REMARKS</u>
	<u>IL 84</u>		
40	142+90 -	156+00	YELLOW CENTER SKIP DASH
39	156+00 -	168+50	YELLOW CENTER SKIP DASH
32	158+00 -	168+50	YELLOW CENTER SKIP DASH
4	168+50 -	169+50	YELLOW CENTER SKIP DASH
27	169+50 -	178+00	YELLOW CENTER SKIP DASH
27	169+50 -	178+00	YELLOW CENTER SKIP DASH
583	178+00 -	370+00	YELLOW CENTER SKIP DASH
24	370+00 -	377+50	YELLOW CENTER SKIP DASH
24	370+00 -	377+50	YELLOW CENTER SKIP DASH
24	377+50 -	384+00	YELLOW CENTER SKIP DASH
	<u>GARDEN PLAIN RD</u>		
19	0+12 -	6+14	YELLOW CENTER SKIP DASH
19	0+12 -	6+14	YELLOW CENTER SKIP DASH
860	TOTAL		

MODEL NUMBER: 111111
FILE NAME: 111111



USER NAME = SUSER8	DESIGNED -	REVISED -
	DRAWN -	REVISED -
PLT SCALE = SCALE: 1:2	CHECKED -	REVISED -
PLT DATE = 12-MAY-2021 13:29	DATE -	REVISED -

**STATE OF ILLINOIS
DEPARTMENT OF TRANSPORTATION**

SCHEDULE OF QUANTITIES

SCALE: SHEET 1 OF 4 SHEETS STA. TO STA.

F.A.P. SITE	SECTION	COUNTY	TOTAL SHEETS	SHEET NO.
308	109R5-2	WHITESIDE	39	13
CONTRACT NO. 64M90				
ILLINOIS FED. AID PROJECT				

70300210 TEMPORARY PAVEMENT MARKING LETTERS AND SYMBOLS							
SQ. FT.	LOCATION	OFFSET	REMARKS				
	<u>IL 84</u>						
54	375+14 - 375+34		OUTSIDE	RR X-ING "X"	SYMBOL	WHITE	
8	375+14 - 375+34		OUTSIDE	RR X-ING "R" (2)	SYMBOL	WHITE	
54	381+95 - 382+15		INSIDE	RR X-ING "X"	SYMBOL	WHITE	
8	381+95 - 382+15		INSIDE	RR X-ING "R" (2)	SYMBOL	WHITE	
124	TOTAL						

70300220 TEMPORARY PAVEMENT MARKING - LINE 4"								
FOOT	LOCATION	DIRECTION	REMARKS					
	<u>IL 84</u>							
4060	142+90 - 183+50	SB	WHITE	OUTSIDE	EDGE	LINE		
2675	184+50 - 211+25	SB	WHITE	OUTSIDE	EDGE	LINE		
2675	211+75 - 238+50	SB	WHITE	OUTSIDE	EDGE	LINE		
2100	239+50 - 260+50	SB	WHITE	OUTSIDE	EDGE	LINE		
2650	261+50 - 288+00	SB	WHITE	OUTSIDE	EDGE	LINE		
5075	288+75 - 339+50	SB	WHITE	OUTSIDE	EDGE	LINE		
2750	341+00 - 368+50	SB	WHITE	OUTSIDE	EDGE	LINE		
2015	369+75 - 389+90	SB	WHITE	OUTSIDE	EDGE	LINE		
840	381+50 - 389+90	SB	YELLOW	INSIDE	EDGE	LINE		
85	142+90 - 143+75	NB	WHITE	OUTSIDE	EDGE	LINE		
1200	144+25 - 156+25	SB	WHITE	OUTSIDE	EDGE	LINE		
8125	157+25 - 238+50	SB	WHITE	OUTSIDE	EDGE	LINE		
1950	240+25 - 259+75	SB	WHITE	OUTSIDE	EDGE	LINE		
2750	260+50 - 288+00	SB	WHITE	OUTSIDE	EDGE	LINE		
5200	288+75 - 340+75	SB	WHITE	OUTSIDE	EDGE	LINE		
1875	342+00 - 360+75	SB	WHITE	OUTSIDE	EDGE	LINE		
2932	361+75 - 391+07	SB	WHITE	OUTSIDE	EDGE	LINE		
957	381+50 - 391+07	SB	YELLOW	OUTSIDE	EDGE	LINE		
330	142+90 - 156+00		YELLOW	CENTER	SKIP	DASH		
320	156+00 - 168+50	SB	YELLOW	CENTER	SKIP	DASH		
1050	158+00 - 168+50	NB	YELLOW	CENTER	SOLID	LINE		
200	168+50 - 169+50		YELLOW	CENTER	SOLID	LINE		
220	169+50 - 178+00	SB	YELLOW	CENTER	SKIP	DASH		
850	169+50 - 178+00	NB	YELLOW	CENTER	SOLID	LINE		
4800	178+00 - 370+00		YELLOW	CENTER	SKIP	DASH		
190	370+00 - 377+50	SB	YELLOW	CENTER	SKIP	DASH		
750	370+00 - 377+50	NB	YELLOW	CENTER	SOLID	LINE		
800	377+50 - 381+50		YELLOW	CENTER	DOUBLE	LINE		
	<u>GARDEN PLAIN RD</u>							
602	0+12 - 6+14	EB	WHITE	INSIDE	EDGE	LINE		
602	0+12 - 6+14	WB	WHITE	OUTSIDE	EDGE	LINE		
160	0+12 - 6+14	WB	YELLOW	CENTER	SKIP	DASH		
602	0+12 - 6+14	EB	YELLOW	CENTER	SOLID	LINE		
61390	TOTAL							

70300250 TEMPORARY PAVEMENT MARKING - LINE 8"										
FOOT	LOCATION	OFFSET	REMARKS							
	<u>IL 84</u>									
29	239+34 - 239+63		WHITE	ISLAND	EDGE	LINE				
	<u>GARDEN PLAIN RD</u>									
26	0+20 - 0+46		WHITE	ISLAND	EDGE	LINE				
36	0+20 - 0+45		WHITE	ISLAND	EDGE	LINE				
91	TOTAL									

70300260 TEMPORARY PAVEMENT MARKING - LINE 12"										
FOOT	LOCATION	OFFSET	REMARKS							
33	0+20 - 0+46		WHITE	OUTSIDE	DIAGONAL	LINE				
33	TOTAL									

70300280 TEMPORARY PAVEMENT MARKING - LINE 24"										
FOOT	LOCATION	OFFSET	REMARKS							
	<u>IL 84</u>									
12	374+96 - 374+98		WHITE	OUTSIDE	RR X-ING	BAR				
12	375+26 - 375+28		WHITE	OUTSIDE	RR X-ING	BAR				
12	381+75 - 381+77		WHITE	INSIDE	RR X-ING	BAR				
12	382+25 - 382+27		WHITE	INSIDE	RR X-ING	BAR				
	<u>GARDEN PLAIN RD</u>									
12	0+24 - 0+26		WHITE	INSIDE	STOP	BAR				
18	0+24 - 0+26		WHITE	INSIDE	STOP	BAR				
78	TOTAL									

MODEL NUMBER: 6404
 FILE NAME: 6404.DWG


ARORA AND ASSOCIATES, P.C.
 Consulting Engineers

USER NAME = S48ERS	DESIGNED -	REVISED -
	DRAWN -	REVISED -
PLOT SCALE = SCALE: 1:12	CHECKED -	REVISED -
PLOT DATE = 12-MAY-2021 10:18	DATE -	REVISED -

STATE OF ILLINOIS
DEPARTMENT OF TRANSPORTATION

SCHEDULE OF QUANTITIES

F.A.P. SITE:	SECTION:	COUNTY:	TOTAL SHEETS:	SHEET NO.:
308	109RS-2	WHITESIDE	39	14
CONTRACT NO. 64M90				
SCALE:	SHEET 2	OF 4	SHEETS	STA. TO STA.
				ILLINOIS FED. AID PROJECT

78009000	MODIFIED URETHANE PAVEMENT MARKING - LETTERS AND SYMBOLS						
SQ. FT.	LOCATION	OFFSET	REMARKS				
	IL 84						
54	375+14 - 375+34		OUTSIDE	RR X-ING "X"	SYMBOL	WHITE	
8	375+14 - 375+34		OUTSIDE	RR X-ING "R" (2)	SYMBOL	WHITE	
54	381+95 - 382+15		INSIDE	RR X-ING "X"	SYMBOL	WHITE	
8	381+95 - 382+15		INSIDE	RR X-ING "R" (2)	SYMBOL	WHITE	
124	TOTAL						

78009004	MODIFIED URETHANE PAVEMENT MARKING - LINE 4"						
FOOT	LOCATION	DIRECTION	REMARKS				
	IL 84						
4060	142+90 - 183+50	SB	WHITE	OUTSIDE	EDGE	LINE	
2675	184+50 - 211+25	SB	WHITE	OUTSIDE	EDGE	LINE	
2675	211+75 - 238+50	SB	WHITE	OUTSIDE	EDGE	LINE	
2100	239+50 - 260+50	SB	WHITE	OUTSIDE	EDGE	LINE	
2650	261+50 - 288+00	SB	WHITE	OUTSIDE	EDGE	LINE	
5075	288+75 - 339+50	SB	WHITE	OUTSIDE	EDGE	LINE	
2750	341+00 - 368+50	SB	WHITE	OUTSIDE	EDGE	LINE	
2015	369+75 - 389+90	SB	WHITE	OUTSIDE	EDGE	LINE	
840	381+50 - 389+90	SB	YELLOW	INSIDE	EDGE	LINE	
85	142+90 - 143+75	NB	WHITE	OUTSIDE	EDGE	LINE	
1200	144+25 - 156+25	SB	WHITE	OUTSIDE	EDGE	LINE	
8125	157+25 - 238+50	SB	WHITE	OUTSIDE	EDGE	LINE	
1950	240+25 - 259+75	SB	WHITE	OUTSIDE	EDGE	LINE	
2750	260+50 - 288+00	SB	WHITE	OUTSIDE	EDGE	LINE	
5200	288+75 - 340+75	SB	WHITE	OUTSIDE	EDGE	LINE	
1875	342+00 - 360+75	SB	WHITE	OUTSIDE	EDGE	LINE	
2932	361+75 - 391+07	SB	WHITE	OUTSIDE	EDGE	LINE	
957	381+50 - 391+07	SB	YELLOW	INSIDE	EDGE	LINE	
330	142+90 - 156+00		YELLOW	CENTER	SKIP	DASH	
320	156+00 - 168+50	SB	YELLOW	CENTER	SKIP	DASH	
1050	158+00 - 168+50	NB	YELLOW	CENTER	SOLID	LINE	
200	168+50 - 169+50		YELLOW	CENTER	DOUBLE	LINE	
220	169+50 - 178+00	SB	YELLOW	CENTER	SKIP	DASH	
850	169+50 - 178+00	NB	YELLOW	CENTER	SOLID	LINE	
4800	178+00 - 370+00		YELLOW	CENTER	SKIP	DASH	
190	370+00 - 377+50	SB	YELLOW	CENTER	SKIP	DASH	
750	370+00 - 377+50	NB	YELLOW	CENTER	SOLID	LINE	
800	377+50 - 381+50		YELLOW	CENTER	DOUBLE	LINE	
GARDEN PLAIN RD							
602	0+12 - 6+14	EB	WHITE	OUTSIDE	EDGE	LINE	
602	0+12 - 6+14	WB	WHITE	OUTSIDE	EDGE	LINE	
160	0+12 - 6+14	WB	YELLOW	CENTER	SKIP	DASH	
602	0+12 - 6+14	EB	YELLOW	CENTER	SOLID	LINE	
61390	TOTAL						

78009008	MODIFIED URETHANE PAVEMENT MARKING - LINE 8"						
FOOT	LOCATION	OFFSET	REMARKS				
	IL 84						
29	239+34 - 239+63		WHITE	ISLAND	EDGE	LINE	
GARDEN PLAIN RD							
26	0+20 - 0+46		WHITE	ISLAND	EDGE	LINE	
36	0+20 - 0+45		WHITE	ISLAND	EDGE	LINE	
91	TOTAL						

78009012	MODIFIED URETHANE PAVEMENT MARKING - LINE 12"						
FOOT	LOCATION	OFFSET	REMARKS				
	IL 84						
25	239+34 - 239+63		WHITE	OUTSIDE	DIAGONAL	LINE	
GARDEN PLAIN RD							
33	0+20 - 0+46		WHITE	OUTSIDE	DIAGONAL	LINE	
58	TOTAL						

78009024	MODIFIED URETHANE PAVEMENT MARKING - LINE 24"						
FOOT	LOCATION	OFFSET	REMARKS				
	IL 84						
12	374+96 - 374+98		WHITE	OUTSIDE	RR X-ING	BAR	
12	375+26 - 375+28		WHITE	OUTSIDE	RR X-ING	BAR	
12	381+75 - 381+77		WHITE	INSIDE	RR X-ING	BAR	
12	382+25 - 382+27		WHITE	INSIDE	RR X-ING	BAR	
GARDEN PLAIN RD							
12	0+24 - 0+26		WHITE	INSIDE	STOP	BAR	
18	0+24 - 0+26		WHITE	INSIDE	STOP	BAR	
78	TOTAL						

78100100	RAISED REFLECTIVE PAVEMENT MARKER						
EACH	LOCATION	OFFSET	REMARKS				
	IL 84						
17	142+90 - 156+00		TWO-WAY	AMBER	CENTER	LINE	
16	156+00 - 168+50		TWO-WAY	AMBER	CENTER	LINE	
11	169+50 - 178+00		TWO-WAY	AMBER	CENTER	LINE	
240	178+00 - 370+00		TWO-WAY	AMBER	CENTER	LINE	
10	370+00 - 377+50		TWO-WAY	AMBER	CENTER	LINE	
10	377+50 - 385+00		TWO-WAY	AMBER	CENTER	LINE	
GARDEN PLAIN RD							
8	0+12 - 6+14		TWO-WAY	AMBER	CENTER	LINE	
312	TOTAL						

MODEL NUMBER: 6404
FILE NAME: 6404.DWG

ARORA AND ASSOCIATES, P.C.
Consulting Engineers

USER NAME = SRSERS	DESIGNED -	REVISED -
	DRAWN -	REVISED -
PLOT SCALE = SCALE: 1:2	CHECKED -	REVISED -
PLOT DATE = 12-MAY-2021 10:19	DATE -	REVISED -

STATE OF ILLINOIS
DEPARTMENT OF TRANSPORTATION

SCHEDULE OF QUANTITIES

F.A.P. SITE	SECTION	COUNTY	TOTAL SHEETS	SHEET NO.
308	1094S-2	WHITESIDE	39	15
CONTRACT NO. 64M90				
SCALE:	SHEET 3	OF 4	SHEETS	STA. TO STA.
				ILLINOIS FED. AID PROJECT

78300200 RAISED REFLECTIVE PAVEMENT MARKER REMOVAL

EACH	LOCATION	OFFSET	REMARKS
<u>IL 84</u>			
17	142+90 - 156+00		TWO-WAY AMBER CENTER LINE
16	156+00 - 168+50		TWO-WAY AMBER CENTER LINE
11	169+50 - 178+00		TWO-WAY AMBER CENTER LINE
240	178+00 - 370+00		TWO-WAY AMBER CENTER LINE
10	370+00 - 377+50		TWO-WAY AMBER CENTER LINE
10	377+50 - 385+00		TWO-WAY AMBER CENTER LINE
304	TOTAL		

X7830060 GROOVING FOR RECESSED PAVEMENT MARKINGS LETTERS AND SYMBOLS

SQ. FT.	LOCATION	OFFSET	REMARKS
<u>IL 84</u>			
57	375+14 - 375+34		OUTSIDE RR X-ING "X" SYMBOL WHITE
9	375+14 - 375+34		OUTSIDE RR X-ING "R" (2) SYMBOL WHITE
57	381+95 - 382+15		INSIDE RR X-ING "X" SYMBOL WHITE
9	381+95 - 382+15		INSIDE RR X-ING "R" (2) SYMBOL WHITE
132	TOTAL		

X7830070 GROOVING FOR RECESSED PAVEMENT MARKING - LINE 5"

FOOT	LOCATION	DIRECTION	REMARKS
<u>IL 84</u>			
4060	142+90 - 183+50	SB	WHITE INSIDE EDGE LINE
2675	184+50 - 211+25	SB	WHITE INSIDE EDGE LINE
2675	211+75 - 238+50	SB	WHITE INSIDE EDGE LINE
2100	239+50 - 260+50	SB	WHITE INSIDE EDGE LINE
2650	261+50 - 288+00	SB	WHITE INSIDE EDGE LINE
5075	288+75 - 339+50	SB	WHITE INSIDE EDGE LINE
2750	341+00 - 368+50	SB	WHITE INSIDE EDGE LINE
2015	369+75 - 389+90	SB	WHITE INSIDE EDGE LINE
840	381+50 - 389+90	SB	YELLOW INSIDE EDGE LINE
85	142+90 - 143+75	NB	WHITE OUTSIDE EDGE LINE
1200	144+25 - 156+25	SB	WHITE OUTSIDE EDGE LINE
8125	157+25 - 238+50	SB	WHITE OUTSIDE EDGE LINE
1950	240+25 - 259+75	SB	WHITE OUTSIDE EDGE LINE
2750	260+50 - 288+00	SB	WHITE OUTSIDE EDGE LINE
5200	288+75 - 340+75	SB	WHITE OUTSIDE EDGE LINE
1875	342+00 - 360+75	SB	WHITE OUTSIDE EDGE LINE
2952	361+75 - 391+07	SB	WHITE OUTSIDE EDGE LINE
957	381+50 - 391+07	SB	YELLOW OUTSIDE EDGE LINE
330	142+90 - 156+00		YELLOW CENTER SKIP DASH
320	156+00 - 168+50	SB	YELLOW CENTER SKIP DASH
1050	158+00 - 168+50	NB	YELLOW CENTER SOLID LINE
200	168+50 - 169+50		YELLOW CENTER DOUBLE LINE
220	169+50 - 178+00	SB	YELLOW CENTER SKIP DASH
850	169+50 - 178+00	NB	YELLOW CENTER SOLID LINE
4800	178+00 - 370+00		YELLOW CENTER SKIP DASH
190	370+00 - 377+50	SB	YELLOW CENTER SKIP DASH
750	370+00 - 377+50	NB	YELLOW CENTER SOLID LINE
800	377+50 - 381+50		YELLOW CENTER DOUBLE LINE

GARDEN PLAIN RD

FOOT	LOCATION	OFFSET	REMARKS
602	0+12 - 6+14		EB WHITE INSIDE EDGE LINE
602	0+12 - 6+14		WB WHITE OUTSIDE EDGE LINE
160	0+12 - 6+14		WB YELLOW CENTER SKIP DASH
602	0+12 - 6+14		EB YELLOW CENTER SOLID LINE
61390	TOTAL		

X7830076 GROOVING FOR RECESSED PAVEMENT MARKING - LINE 9"

FOOT	LOCATION	OFFSET	REMARKS
<u>IL 84</u>			
29	239+34 - 239+63		WHITE ISLAND EDGE LINE
<u>GARDEN PLAIN RD</u>			
26	0+20 - 0+46		WHITE ISLAND EDGE LINE
36	0+20 - 0+45		WHITE ISLAND EDGE LINE
91	TOTAL		

X7830078 GROOVING FOR RECESSED PAVEMENT MARKING - LINE 13"

FOOT	LOCATION	OFFSET	REMARKS
<u>IL 84</u>			
25	239+34 - 239+63		WHITE OUTSIDE DIAGONAL LINE
<u>GARDEN PLAIN RD</u>			
33	0+20 - 0+46		WHITE OUTSIDE DIAGONAL LINE
58	TOTAL		

X7830090 GROOVING FOR RECESSED PAVEMENT MARKING - LINE 25"

FOOT	LOCATION	OFFSET	REMARKS
<u>IL 84</u>			
12	374+96 - 374+98		WHITE OUTSIDE RR X-ING BAR
12	375+26 - 375+28		WHITE OUTSIDE RR X-ING BAR
12	381+75 - 381+77		WHITE INSIDE RR X-ING BAR
12	382+25 - 382+27		WHITE INSIDE RR X-ING BAR
<u>GARDEN PLAIN RD</u>			
12	0+24 - 0+26		WHITE INSIDE STOP BAR
18	0+24 - 0+26		WHITE INSIDE STOP BAR
78	TOTAL		

Z0028415 GEOTECHNICAL REINFORCEMENT

SQ. YD.	LOCATION	OFFSET	REMARKS
<u>IL 84</u>			
402	142+90 - 389+99		AS NEEDED FOR PATCHING
<u>GARDEN PLAIN RD</u>			
10	0+12 - 6+14		
412	TOTAL		

MODEL NUMBER: 6484
FILE NAME: 111111.DWG

ARORA AND ASSOCIATES, P.C.
Consulting Engineers

USER NAME = S48ERS	DESIGNED -	REVISED -
PLOT SCALE = SCALE: 1:12	DRAWN -	REVISED -
PLOT DATE = 12-MAY-2021 10:19	CHECKED -	REVISED -
	DATE -	REVISED -

STATE OF ILLINOIS
DEPARTMENT OF TRANSPORTATION

SCHEDULE OF QUANTITIES

SCALE: SHEET 4 OF 4 SHEETS STA. TO STA.

F.A.P. SITE	SECTION	COUNTY	TOTAL SHEETS	SHEET NO.
308	1094S-2	WHITESIDE	39	16
CONTRACT NO. 64M90				
ILLINOIS FED. AID PROJECT				

HMA SCHEDULE

LOCATION	SURFACE		40600290		40600985	40600990	40602965	40604050			40604060	40605034	44000155	44000167	44000169	48102100	64200108	X4400196	Z0033700						
	STA TO STA	RESURFACI	REMARKS	RT/LT	FOOT	FOOT	FOCT	BITUMINOUS MATERIALS (TACK COAT) (1 APPLICATION)	BITUMINOUS MATERIALS (TACK COAT) (2 APPLICATIONS)	PCC SURFACE REMOVAL - BUTT JOINT	TEMPORARY RAMP	HMA BINDER COURSE, IL-9.8FG, N50	HMA SURFACE COURSE, IL-9.5 MIX "C", N50	HMA SURFACE COURSE, IL-9.5 MIX "C", N50	HMA SURFACE COURSE, IL-9.5 MIX "D", N50	POLYMERIZED HMA SURFACE COURSE, STONE MATRIX ASPHALT, 12.5, MIX "F", T88	HMA SURFACE REMOVAL, 1 1/2"	HMA SURFACE REMOVAL, 2"	HMA SURFACE REMOVAL, 2 3/4"	AGGREGATE WEDGE SHOULDER, TYPE B	SHOULDER RUMBLE STRIPS, 8 INCH	HMA SURFACE REMOVAL, SPECIAL	LONGITUDINAL JOINT SEALANT		
																								TON	TON
MAINLINE IL 84																									
142+90 - 143+20		TEMP RAMP			30	26																			
142+90 - 151+00					810	26		1,579.5											2,340.0					810	
151+00 - 164+00					1,300	26		2,535.0											3,755.6					1,300	
164+00 - 171+34					734	26		1,431.3											2,120.4					734	
171+04 - 171+34		TEMP RAMP			30	26																			
171+34 - 171+88		PAVEMENT GAP			54	26																			
171+88 - 172+18		TEMP RAMP			30	26																			
171+88 - 174+00					212	26		413.4																212	
174+00 - 225+35					5,135	26		10,013.3																5,135	
225+05 - 225+35		TEMP RAMP			30	26																			
225+35 - 225+94		PAVEMENT GAP			59	26																			
225+94 - 226+24		TEMP RAMP			30	26																			
225+94 - 341+00					11,506	26		22,436.7																11,506	
341+00 - 343+89					289	26		563.6																289	
343+89 - 343+89		TEMP RAMP			30	26																		30	
343+89 - 345+65		PAVEMENT GAP			176	26																			
345+65 - 345+95		TEMP RAMP			30	26																		30	
345+65 - 360+00					1,435	26		2,798.3																1,435	
360+00 - 378+40					1,840	26		3,588.0																1,840	
378+10 - 378+40		RR TEMP RAMP			30	26																			
378+40 - 378+87		PAVEMENT GAP			47	26																			
378+87 - 379+17		RR TEMP RAMP			30	26																			
378+87 - 384+00					513	26		1,000.4																513	
MAINLINE IL 84																									
384+00 - 389+99		SB	LT	599		14		629.0																	
384+00 - 391+07		NB	RT	707		14		742.4																	
389+69 - 389+99		SB TEMP RAMP	LT	30		14																			
390+77 - 391+07		NB TEMP RAMP	RT	30		14																			
SHOULDER IL 84 - NB																									
142+90 - 151+00					810	3																		34.6	
151+00 - 164+00					1,300	3																		55.5	
164+00 - 174+00		EX PAVED SHLDR			1,000	8		400.0					74.7					888.9					1,000		
174+00 - 341+00					16,700	3																		713.2	
341+00 - 360+00		EX PAVED SHLDR			1,900	3		285.0																1,900	
360+00 - 384+00					2,400	3																		102.5	
384+00 - 391+07		SHLDR - 2 SIDES			707	6		212.1																60.4	
SHOULDER IL 84 - SB																									
142+90 - 151+00		EX PAVED SHLDR			610	34		1,377.0											358.0						3,000.0
144+00 - 144+02		TRENCH FOR DRAINAGE			2	34																			7.6
149+00 - 149+02		TRENCH FOR DRAINAGE			2	34																			7.6
151+00 - 164+00		EX PAVED SHLDR			1,300	10		650.0																	1,300
154+00 - 154+02		TRENCH FOR DRAINAGE			2	10																			2.2
159+00 - 159+02		TRENCH FOR DRAINAGE			2	10																			2.2
162+00 - 162+02		TRENCH FOR DRAINAGE			2	10																			2.2
164+00 - 174+00		EX PAVED SHLDR			1,000	8		400.0																	74.7
169+00 - 169+02		TRENCH FOR DRAINAGE			2	10																			888.9
174+00 - 174+02		TRENCH FOR DRAINAGE			2	10																			1,000
174+00 - 341+00					16,700	3																			713.2
341+00 - 360+00		EX PAVED SHLDR			1,900	8		760.0																	1,900
360+00 - 384+00					2,400	3																			102.5
384+00 - 389+99		SHLDR - 2 SIDES			599	6		179.7																	51.2
MAINLINE GARDEN PLAIN RD																									
0+12 - 6+14					602	3																			25.7
5+99 - 6+14		PCC BUTT JOINT			15	22				36.7															206.0
SHOULDER GARDEN PLAIN RD - NB																									
0+12 - 6+14					602	3																			25.7
SHOULDER GARDEN PLAIN RD - SB																									
0+12 - 6+14					602	3																			25.7
SUBTOTAL																									
								4,264	47,731	37	873	5,954	618	268	5,954	358	6,016	3,060	70,885	1,885	7,100	26	23,834		
GRAND TOTAL																									
								51,995		37	873	5,954	745	268	5,954	358	6,016	3,060	70,885	1,885	7,100	26	23,834		

NOTE:

- HOT-MIX REMOVAL SPECIAL & INCIDENT RESURFACING - EXTRA (FOR USE ON PAVED SHOULDERS)

MODEL NUMBER: ARORA
FILE NAME: ILL84

ARORA AND ASSOCIATES, P.C.
Consulting Engineers

USER NAME = S408RS	DESIGNED -	REVISED -
PLOT SCALE = SCALE: 1:2	DRAWN -	REVISED -
PLOT DATE = 12-MAR-2021 10:20	CHECKED -	REVISED -
	DATE -	REVISED -

STATE OF ILLINOIS
DEPARTMENT OF TRANSPORTATION

HMA SCHEDULE

SCALE:	SHEET 1	OF 1	SHEETS	STA.	TO STA.	F.A.P. SITE:	SECTION	COUNTY	TOTAL SHEETS	SHEET NO.
						308	109RS-2	WHITESIDE	39	17
CONTRACT NO. 64M90										
ILLINOIS FED. AID PROJECT										

ENTRANCES & SIDEROADS SCHEDULE

LOCATION			CENTERLINE TO ROW	WIDTH AT SHOULDER	SHOULDER TO THROAT	THROAT WIDTH	THROAT TO TERMINI	TERMINI WIDTH	AREA	40600290	40800050	44000158	48102100
										BITUMINOUS MATERIALS (TACK COAT)	INCIDENTAL HMA SURFACING (2 1/4") (112 lbs/sqyd)	HMA SURFACE REMOVAL, 2 1/4"	AGGREGATE WEDGE SHOULDER, TYPE B
STA	RT/LT	NOTES	FOOT	FOOT	FOOT	FOOT	FOOT	FOOT	SQ YD	POUND	TON	SQ YD	TON
MAINLINE IL 84													
143+50	LT	COMMERCIAL	40.0	115.0	26.0	90.0			296.1	133.2	37.3		3.4
144+00	RT	N BLUFF ST	39.0	63.0	28.0	17.0			124.4	56.0	15.7	124.4	3.3
151+00	LT	PRIVATE	40.0	40.0	16.0	26.0			58.7	28.4	7.4		3.4
156+75	RT	PALMER RD	40.0	100.0	27.0	64.0			246.0	110.7	31.0	246.0	3.4
183+75	LT	VANS RD	40.0	63.0	15.0	15.0	15.0	15.0	90.0	40.5	11.3	90.0	3.4
187+25	RT	PRIVATE	42.0	52.0	15.0	15.0	13.0	10.0	73.9	33.3	9.3		3.6
190+50	RT	COMMERCIAL	42.0	58.0	12.0	36.0	16.0	23.0	115.1	51.8	14.5		3.6
193+75	RT	COMMERCIAL	42.0	62.0	13.0	32.0	16.0	26.0	119.4	53.7	15.0		3.6
198+25	LT	PRIVATE	40.0	100.0	14.0	16.0	14.0	13.0	112.8	50.8	14.2		3.4
205+75	LT	PRIVATE	40.0	59.0	19.0	21.0	7.0	19.0	100.0	45.0	12.6		3.4
211+50	LT	VANS RD	41.0	90.0	16.0	17.0	11.0	17.0	115.9	52.2	14.6	115.9	3.5
227+50	RT	PRIVATE	60.0	42.0	16.0	17.0	31.0	20.0	116.2	52.3	14.6		5.1
229+75	LT	PRIVATE	40.0	70.0	18.0	18.0	7.0	12.0	99.7	44.9	12.6		3.4
239+00	LT	EBSON RD	40.0	92.0	28.0	30.0			189.8	85.4	23.9	189.8	3.4
240+50	RT	PRIVATE	40.0	40.0	20.0	19.0	6.0	20.0	78.5	35.4	9.9		3.4
242+25	RT	PRIVATE	40.0	42.0	15.0	15.0	10.0	16.0	64.7	29.1	8.2		3.4
250+25	RT	PRIVATE	45.0	39.0	15.0	14.0	19.0	10.0	69.5	31.3	8.8		3.8
260+00	RT	DIAMOND RD	45.0	70.0	16.0	32.0	20.0	18.0	146.2	65.8	18.4	146.2	3.8
261+00	LT	EBSON RD	54.0	92.0	27.0	26.0	11.0	20.0	205.1	92.3	25.8	205.1	4.6
264+75	RT	PRIVATE	42.0	48.0	16.0	15.0	14.0	10.0	75.4	33.9	9.5		3.6
270+75	LT	PRIVATE	55.0	46.0	19.0	12.0	23.0	7.0	85.5	38.5	10.8		4.7
272+50	RT	PRIVATE	42.0	60.0	21.0	13.0	9.0	11.0	97.2	43.7	12.2		3.6
274+00	RT	PRIVATE	42.0	58.0	17.0	19.0	15.0	11.0	97.7	44.0	12.3		3.6
274+50	RT	MB TURNOUT							28.3	12.8	3.6		
285+00	RT	PRIVATE	42.0	41.0	15.0	14.0	16.0	10.0	67.2	30.2	8.5		3.6
286+00	RT	MB TURNOUT							25.0	11.3	3.2		
286+25	RT	PRIVATE	42.0	33.0	15.0	17.0	18.0	12.0	70.7	31.8	8.9		3.6
288+50	RT	HAZEL RD	42.0	74.0	15.0	36.0	17.0	24.0	148.3	66.7	18.7	148.3	3.6
288+50	LT	HAZEL RD	40.0	75.0	19.0	19.0	9.0	18.0	117.7	53.0	14.8	117.7	3.4
302+75	RT	MB TURNOUT							32.7	14.7	4.1		
303+50	RT	COMMERCIAL	42.0	89.0	28.0	38.0			197.6	88.9	24.9		3.6
312+50	RT	PRIVATE	42.0	58.0	27.0	21.0			118.5	53.3	14.9		3.6
314+00	RT	MB TURNOUT							34.1	15.4	4.3		
314+50	RT	PRIVATE	42.0	72.0	10.0	28.0	20.0	19.0	107.8	48.5	13.6		3.6
317+50	RT	PRIVATE	42.0	60.0	20.0	15.0	13.0	14.0	104.3	46.9	13.1		3.6
317+75	RT	MB TURNOUT							30.8	13.9	3.9		
326+00	RT	PRIVATE	42.0	54.0	22.0	16.0	16.0	9.0	107.8	48.5	13.6		3.6
340+00	LT	EBSON RD	70.0	136.0	33.0	30.0	24.0	14.0	363.0	163.4	45.7	363.0	6.0
341+50	RT	EBSON RD	60.0	124.0	36.0	47.0	30.0	31.0	472.0	212.4	59.5	472.0	5.1
361+00	RT	HOLLY RD	40.0	84.0	24.0	13.0			129.3	58.2	16.3	129.3	3.4
368+00	RT	COMMERCIAL	40.0	58.0	13.0	34.0	17.0	24.0	121.2	54.5	15.3		3.4
368+50	RT	COMMERCIAL	40.0	62.0	26.0	16.0			112.7	50.7	14.2		3.4
368+50	LT	WARD RD	40.0	125.0	13.0	85.0	18.0	43.0	279.7	125.9	35.2	279.7	3.4
GARDEN PLAIN RD													
2+75	RT	KENNEDY DR		65.0	29.0	28.0	20.0	22.0	205.4	92.4	25.9	205.4	4.7
4+50	RT	COMMERCIAL		71.0	17.0	38.0			102.9	46.3	13.0		4.7
5+00	LT	PRIVATE		51.0	16.0	20.0			63.1	28.4	8.0		4.7
SUBTOTAL										2,618	733	2,833	156

MODEL NUMBER: 6404
FILE NAME: 6404.DWG

ARORA AND ASSOCIATES, P.C.
Consulting Engineers

USER NAME = SRSERS	DESIGNED -	REVISED -
	DRAWN -	REVISED -
PLOT SCALE = SCALE: 1:2	CHECKED -	REVISED -
PLOT DATE = 12-MAY-2021 10:21	DATE -	REVISED -

STATE OF ILLINOIS
DEPARTMENT OF TRANSPORTATION

ENTRANCES & SIDEROADS SCHEDULE

SCALE:	SHEET 1	OF 1	SHEETS	STA.	TO STA.	F.A.P. SITE:	SECTION	COUNTY	TOTAL SHEETS	SHEET NO.
						308	109RS-2	WHITESIDE	39	18
CONTRACT NO. 64M90										
ILLINOIS FED. AID PROJECT										

PATCH SCHEDULE

LOCATION				4200060	44200919	44200924	44200926	44201003	44201007	44201011	44201013	44201294	44201297	44201798	44201807	44201809	44213200	44213204
				WELDED WIRE REINFORCEMENT	CLASS B PATCHES, TYPE II, 7 INCH	CLASS B PATCHES, TYPE III, 7 INCH	CLASS B PATCHES, TYPE IV, 7 INCH	CLASS B PATCHES, TYPE I, 13 INCH	CLASS B PATCHES, TYPE II, 13 INCH	CLASS B PATCHES, TYPE III, 13 INCH	CLASS B PATCHES, TYPE IV, 13 INCH	CLASS B PATCH - EXPANSION JOINT	DOWEL BARS 1"	CLASS D PATCHES, TYPE I, 13 INCH	CLASS D PATCHES, TYPE III, 13 INCH	CLASS D PATCHES, TYPE IV, 13 INCH	SAW CUTS	TIE BARS 3/4"
STA	RT/LT	LENGTH	WIDTH	SQ YD	SQ YD	SQ YD	SQ YD	SQ YD	SQ YD	SQ YD	FOOT	EACH	SQ YD	SQ YD	FOOT	EACH		
142+75	LT	6.0	13.0					8.7			38.0	20					32	
142+75	RT	6.0	13.0					8.7			38.0	20					32	
145+50	RT	6.0	13.0					8.7			38.0	20					26	
146+25	GR EL	50.0	10.0												55.6		70	
146+50	RT	6.0	13.0					8.7			38.0	20					26	
147+00	GR EL	50.0	10.0												55.6		70	
147+60	LT	6.0	13.0					8.7			38.0	20					26	
147+50	RT	6.0	13.0					8.7			38.0	20					26	
148+25	GR EL	20.0	10.0														40	
148+75	RT	3.0	6.0										1.7		22.2	0.0	10	
149+50	GR EL	15.0	10.0												16.7		35	
150+50	GR EL	55.0	10.0													61.1	75	
152+75	GR EL	115.0	10.0													127.0	135	
157+33	RT	6.0	12.0					8.0			36.0	20					24	
161+80	RT	6.0	3.0										2.0				12	
164+25	LT	30.0	8.0							26.7	76.0	10					46	
165+25	RT	6.0	13.0					8.7			38.0	20					32	
165+25	LT	6.0	13.0					8.7			38.0	20					32	
166+75	LT	6.0	13.0					8.7			38.0	20					32	
166+75	RT	6.0	13.0					8.7			38.0	20					32	
168+10	LT	6.0	13.0					8.7			38.0	20					32	
168+10	RT	6.0	13.0					8.7			38.0	20					32	
169+25	LT	6.0	13.0					8.7			38.0	20					32	
169+25	RT	6.0	13.0					8.7			38.0	20					32	
169+50	LT	20.0	3.0										6.7				20	
173+50	LT	6.0	13.0					8.7			38.0	20					32	
173+50	RT	6.0	13.0					8.7			38.0	20					32	
173+75	RT	1.0	2.0										0.2				5	
174+00	LT	6.0	13.0					8.7			38.0	20					32	
174+00	RT	6.0	13.0					8.7			38.0	20					32	
174+75	LT	6.0	13.0					8.7			38.0	20					26	
174+75	RT	6.0	13.0					8.7			38.0	20					26	
175+75	LT	6.0	13.0					8.7			38.0	20					26	
175+75	RT	6.0	13.0					8.7			38.0	20					26	
176+75	LT	6.0	13.0					8.7			38.0	20					26	
176+75	RT	6.0	13.0					8.7			38.0	20			24.7		12	
176+75	RT	37.0	6.0					8.7			38.0	20					37	
177+10	LT	6.0	13.0					8.7			38.0	20					26	
181+50	RT	100.0	4.0										44.4				8	
182+75	LT	6.0	13.5					9.0			39.0	20					27	
182+75	RT	6.0	13.5					9.0			39.0	20					27	
183+50	LT	6.0	13.5					9.0			39.0	20					27	
183+50	RT	6.0	13.5					9.0			39.0	20					27	
183+60	RT	6.0	13.6					9.0			39.0	20					27	
185+50	RT	6.0	14.0					9.3			40.0	20					28	
186+00	LT	1.0	2.0										0.2				4	
190+25	LT	3.0	2.0										n 7				4	
196+50	LT	6.0	13.5					9.0			39.0	20					27	
196+50	RT	6.0	13.5					9.0			39.0	20					27	
199+90	LT	6.0	13.5					9.0			39.0	20					27	
199+90	RT	6.0	13.5					9.0			39.0	20					27	
199+90	LT	6.0	13.5					9.0			39.0	20					27	
199+90	RT	6.0	13.5					9.0			39.0	20					27	
191+25	LT	2.0	2.0										0.4				4	
191+75	LT	6.0	13.5					9.0			39.0	20					27	
191+75	RT	6.0	13.5					9.0			39.0	20					27	
192+25	LT	6.0	13.5					9.0			39.0	20					27	
192+25	RT	6.0	13.5					9.0			39.0	20					27	
193+25	LT	6.0	13.5					9.0			39.0	20					27	
193+25	RT	6.0	13.5					9.0			39.0	20					27	
194+00	RT	2.0	2.0					0.0					0.4				4	
194+26	LT	6.0	13.6					9.0			39.0	20					27	
194+25	RT	6.0	13.5					9.0			39.0	20					27	
194+75	LT	6.0	13.5					9.0			39.0	20					27	
194+75	RT	6.0	13.5					9.0			39.0	20					27	
195+50	LT	6.0	13.5					9.0			39.0	20					27	
195+50	RT	6.0	13.5					9.0			39.0	20					27	
196+10	LT	1.0	2.0										0.2				4	
196+25	LT	6.0	13.5					9.0			39.0	20					27	
196+25	RT	6.0	13.5					9.0			39.0	20					27	
199+75	LT	30.0	2.0										n 7				4	
197+00	LT	6.0	14.0					9.3			40.0	20					28	
197+10	RT	6.0	14.0					9.3			40.0	20					28	

MODEL NUMBER, NAME, FILE NAME, ETC.



USER NAME = KJRSB	DESIGNED -	REVISED -
PLOT SCALE = SCALE: 1/2	DRAWN -	REVISED -
PLOT DATE = 12-MAY-2021 10:22	CHECKED -	REVISED -
	DATE -	REVISED -

**STATE OF ILLINOIS
DEPARTMENT OF TRANSPORTATION**

PATCH SCHEDULE

SCALE: SHEET 1 OF 5 SHEETS STA. TO STA.

F.A.P. SITE	SECTION	COUNTY	TOTAL SHEETS	SHEET NO.
308	10945-2	WHITESIDE	39	19
CONTRACT NO. 64M90				
ILLINOIS FED. AID PROJECT				

PATCH SCHEDULE

LOCATION				4200060	44200919	44200924	44200926	44201003	44201007	44201011	44201013	44201294	44201297	44201798	44201807	44201809	44213200	44213204
				WELDED WIRE REINFORCEMENT	CLASS B PATCHES, TYPE II, 7 INCH	CLASS B PATCHES, TYPE III, 7 INCH	CLASS B PATCHES, TYPE IV, 7 INCH	CLASS B PATCHES, TYPE I, 13 INCH	CLASS B PATCHES, TYPE II, 13 INCH	CLASS B PATCHES, TYPE III, 13 INCH	CLASS B PATCHES, TYPE IV, 13 INCH	CLASS B PATCHES, TYPE I, 13 INCH	CLASS B PATCHES, TYPE II, 13 INCH	CLASS B PATCHES, TYPE III, 13 INCH	CLASS B PATCHES, TYPE IV, 13 INCH	DOWEL BARS 1"	CLASS D PATCHES, TYPE I, 13 INCH	CLASS D PATCHES, TYPE III, 13 INCH
STA	RT/LT	LENGTH	WIDTH	SQ YD	SQ YD	SQ YD	SQ YD	SQ YD	SQ YD	SQ YD	SQ YD	FOOT	EACH	SQ YD	SQ YD	SQ YD	FOOT	EACH
197+90	LT	6.0	13.0						8.7			38.0	20				26	4
197+90	RT	3.0	2.0											0.7			4	4
198+50	LT	2.0	2.0											0.4			4	4
198+75	LT	6.0	13.5						9.0			39.0	20				27	
198+75	RT	6.0	13.5						9.0			39.0	20				27	
199+80	LT	6.0	13.5						9.0			39.0	20				27	
199+80	RT	6.0	13.5						9.0			39.0	20				27	
200+25	LT	6.0	13.5						9.0			39.0	20				27	
200+25	RT	6.0	13.5						9.0			39.0	20				27	
200+75	LT	6.0	13.5						9.0			39.0	20				27	
200+75	RT	6.0	13.5						9.0			39.0	20				27	
201+25	RT	6.0	13.0						8.7			38.0	20				26	
201+90	LT	6.0	13.5						9.0			39.0	20				27	
201+90	RT	6.0	13.5						9.0			39.0	20				27	
203+00	LT	6.0	13.0						8.7			38.0	20				26	
203+00	RT	1.0	2.0											0.2			4	
203+90	LT	6.0	13.5						9.0			39.0	20				27	
203+90	RT	6.0	13.5						9.0			39.0	20				27	
204+25	LT	15.0	13.5		22.5					22.5		57.0	20				27	
204+25	RT	15.0	13.5		22.5					22.5		57.0	20				27	
206+75	LT	6.0	14.0						9.3			40.0	20				28	
207+50	LT	6.0	13.5						9.0			39.0	20				27	
207+50	RT	6.0	13.5						9.0			39.0	20				27	
208+50	RT	6.0	14.0						9.3			40.0	20				28	
210+00	LT	6.0	14.0						9.3			40.0	20				28	
210+50	LT	6.0	13.5						9.0			39.0	20				27	
210+50	RT	6.0	13.5						9.0			39.0	20				27	
211+50	LT	6.0	14.0						9.3			40.0	20				28	
212+00	RT	6.0	14.0						9.3			40.0	20				28	
212+25	LT	6.0	13.5						9.0			39.0	20				27	
212+25	RT	6.0	13.5						9.0			39.0	20				27	
212+75	LT	6.0	13.5						9.0			39.0	20				27	
212+75	RT	6.0	13.5						9.0			39.0	20				27	
213+75	LT	6.0	13.5						9.0			39.0	20				27	
213+75	RT	6.0	13.5						9.0			39.0	20				27	
215+50	LT	6.0	13.5						9.0			39.0	20				27	
215+50	RT	6.0	13.5						9.0			39.0	20				27	
217+50	LT	6.0	13.5						9.0			39.0	20				27	
217+50	RT	6.0	13.5						9.0			39.0	20				27	
219+10	LT	6.0	13.5						9.0			39.0	20				27	
219+10	RT	6.0	13.5						9.0			39.0	20				27	
220+25	LT	6.0	13.5						9.0			39.0	20				27	
220+25	RT	6.0	13.5						9.0			39.0	20				27	
220+75	RT	2.0	3.0											0.7			6	
221+00	LT	6.0	13.0						8.7			38.0	20				26	
221+25	LT	6.0	13.5						9.0			39.0	20				27	
221+25	RT	6.0	13.5						9.0			39.0	20				27	
223+25	RT	6.0	13.0						8.7			38.0	20				26	
224+50	LT	106.0	13.5		159.0						159.0	239.0	20				27	159
224+50	RT	106.0	13.5		159.0						159.0	239.0	20				27	159
228+00	RT	23.0	4.0									49.0	20				8	29
228+50	LT	109.0	13.5		163.5						163.5	245.0	20		8.9		27	164
228+50	RT	109.0	13.5		163.5						163.5	245.0	20				27	164
229+75	LT	6.0	13.5						9.0			39.0	20				27	
229+75	RT	6.0	13.5						9.0			39.0	20				27	
230+00	LT	6.0	12.0						8.0			36.0	20				24	
230+75	RT	6.0	14.0						9.3			40.0	20				28	
232+25	RT	22.0	4.0						9.8			52.0	20		9.8		8	22
233+00	LT	6.0	15.0						10.0			42.0	20				30	
234+00	LT	2.0	3.0											0.7			6	
234+00	RT	10.0	2.0											2.2			4	
234+75	LT	40.0	2.0						8.9			84.0	20		2.2		4	40
235+00	LT	6.0	13.5						9.0			39.0	20				27	
235+00	RT	6.0	13.5						9.0			39.0	20				27	
235+80	RT	6.0	13.5						9.0			39.0	20				27	
235+85	LT	6.0	13.5						9.0			39.0	20				27	
236+75	LT	6.0	13.5						9.0			39.0	20				27	
236+75	RT	6.0	13.5						9.0			39.0	20				27	
237+75	LT	6.0	13.5						9.0			39.0	20				27	
237+75	RT	6.0	13.5						9.0			39.0	20				27	
239+50	LT	6.0	13.0						8.7			38.0	20				26	
239+50	RT	6.0	13.0						8.7			38.0	20				26	
240+00	LT	6.0	13.0						8.7			38.0	20				26	
240+00	RT	6.0	13.0						8.7			38.0	20				26	

MODEL NUMBER: ARORA
FILE NAME: P1025



USER NAME = S428RS
DESIGNED -
DRAWN -
PLOT SCALE = SCALE: 1:2
PLOT DATE = 12-MAY-2021 10:23

DESIGNED -
REVISED -
CHECKED -
DATE -

REVISED -
REVISED -
REVISED -
REVISED -

**STATE OF ILLINOIS
DEPARTMENT OF TRANSPORTATION**

PATCH SCHEDULE

SCALE: SHEET 2 OF 5 SHEETS STA. TO STA.

F.A.P. SITE	SECTION	COUNTY	TOTAL SHEETS	SHEET NO.
308	109AS-2	WHITESIDE	39	20
CONTRACT NO. 64M90				
ILLINOIS			FED. AID PROJECT	

PATCH SCHEDULE

LOCATION				42000000	44200919	44200924	44200926	44201003	44201007	44201011	44201013	44201234	44201297	44201786	44201807	44201809	44213200	44213204
				WELDED WIRE REINFORCEMENT	CLASS B PATCHES, TYPE II, 7 INCH	CLASS B PATCHES, TYPE III, 7 INCH	CLASS B PATCHES, TYPE IV, 7 INCH	CLASS B PATCHES, TYPE I, 13 INCH	CLASS B PATCHES, TYPE II, 13 INCH	CLASS B PATCHES, TYPE III, 13 INCH	CLASS B PATCHES, TYPE IV, 13 INCH	CLASS B PATCH - EXPANSION JOINT	DOWEL BARS 1"	CLASS D PATCHES, TYPE I, 13 INCH	CLASS D PATCHES, TYPE III, 13 INCH	CLASS D PATCHES, TYPE IV, 13 INCH	SAW CUTS	TIE BARS 3/4"
STA	RT/LT	LENGTH	WIDTH	SQ YD	SQ YD	SQ YD	SQ YD	SQ YD	SQ YD	SQ YD	SQ YD	FOOT	EACH	SQ YD	SQ YD	SQ YD	FOOT	EACH
240+90	LT	3.0	4.0											1.3				8
240+90	RT	6.0	13.0					8.7				36.0	20					26
241+50	LT	6.0	13.0					8.7				36.0	20					26
241+50	RT	6.0	13.0					8.7				36.0	20					26
242+50	LT	6.0	13.0					8.7				36.0	20					26
242+50	RT	6.0	13.0					8.7				36.0	20					26
243+10	RT	6.0	14.0					9.3				40.0	20					28
243+50	RT	6.0	13.0					8.7				36.0	20					26
246+50	LT	6.0	13.0					8.7				36.0	20					26
246+50	RT	6.0	13.0					8.7				36.0	20					26
247+25	LT	6.0	13.0					8.7				36.0	20					26
247+25	RT	6.0	13.0					8.7				36.0	20					26
250+00	LT	6.0	13.0					8.7				36.0	20					26
250+00	RT	6.0	13.0					8.7				36.0	20					26
251+25	LT	6.0	13.0					8.7				36.0	20					26
251+25	RT	6.0	13.0					8.7				36.0	20					26
253+75	LT	6.0	13.0					8.7				36.0	20					26
253+75	RT	6.0	13.0					8.7				36.0	20					26
254+50	LT	6.0	13.0					8.7				36.0	20					26
254+50	RT	6.0	13.0					8.7				36.0	20					26
255+50	RT	3.0	2.0											0.7				4
257+90	LT	6.0	13.5					9.0				36.0	20					27
257+90	RT	6.0	13.5					9.0				36.0	20					27
260+00	LT	6.0	14.0					9.3				40.0	20					28
260+25	LT	6.0	13.5					9.0				36.0	20					27
260+25	RT	6.0	13.5					9.0				36.0	20					27
260+50	LT	6.0	13.5					9.0				36.0	20					27
260+50	RT	6.0	13.5					9.0				36.0	20					27
262+00	LT	10.0	13.0					14.4				46.0	20					28
262+00	RT	6.0	13.0					8.7				36.0	20					26
264+25	LT	6.0	13.5					9.0				36.0	20					27
264+25	RT	6.0	13.5					9.0				36.0	20					27
266+90	LT	6.0	13.5					9.0				36.0	20					27
266+90	RT	6.0	13.5					9.0				36.0	20					27
268+25	LT	6.0	13.0					8.7				36.0	20					26
270+00	LT	10.0	13.0					14.4				46.0	20					28
270+10	LT	6.0	13.5					9.0				36.0	20					27
270+10	RT	6.0	13.5					9.0				36.0	20					27
271+40	LT	6.0	13.0					8.7				36.0	20					26
272+00	LT	6.0	13.0					8.7				36.0	20					26
272+00	RT	6.0	13.0					8.7				36.0	20					26
273+25	LT	6.0	13.0					8.7				36.0	20					26
274+75	LT	6.0	13.5					9.0				36.0	20					27
274+75	RT	6.0	13.5					9.0				36.0	20					27
278+10	LT	6.0	13.5					9.0				36.0	20					27
278+10	RT	6.0	13.5					9.0				36.0	20					27
278+75	RT	10.0	1.0											1.1				2
279+10	LT	6.0	13.5					9.0				36.0	20					27
279+10	RT	6.0	13.5					9.0				36.0	20					27
279+25	LT	6.0	13.5					9.0				36.0	20					27
279+25	RT	6.0	13.5					9.0				36.0	20					27
279+75	LI	2.0	3.0											0.7				6
280+25	LT	6.0	13.0					8.7				36.0	20					26
280+50	LT	6.0	13.0					8.7				36.0	20					26
281+00	RT	6.0	13.0					8.7				36.0	20					26
281+25	LT	6.0	13.0					8.7				36.0	20					26
281+75	LT	6.0	13.5					9.0				36.0	20					27
281+75	RT	6.0	13.5					9.0				36.0	20					27
282+40	LT	6.0	13.0					8.7				36.0	20					26
283+25	LT	6.0	13.0					8.7				36.0	20					26
283+25	RT	6.0	13.0					8.7				36.0	20					26
284+00	LT	6.0	2.0											1.3				4
284+50	LT	6.0	13.0					8.7				36.0	20					26
285+50	LT	6.0	13.0					8.7				36.0	20					26
286+25	LT	6.0	13.0					8.7				36.0	20					26
286+50	LT	2.0	3.0											0.7				6
290+50	LT	6.0	13.0					8.7				36.0	20					26
290+50	RT	6.0	13.0					8.7				36.0	20					26
291+00	LT	2.0	3.0											0.7				6
291+40	RT	2.0	4.0											0.9				6
291+60	LT	6.0	13.0					8.7				36.0	20					26
292+10	LT	6.0	13.5					9.0				36.0	20					27
292+10	RT	6.0	13.5					9.0				36.0	20					27
292+50	LT	2.0	2.0											0.4				4
293+00	LT	6.0	13.5					9.0				36.0	20					27

MODEL NUMBER: 6404
FILE NAME: 6404.DWG



USER NAME = S428RS
DESIGNED -
DRAWN -
PLOT SCALE = SCALE: 1:2
PLOT DATE = 12-MAY-2021 10:23

REVISIONS
REVISED -
REVISED -
REVISED -
DATE -

**STATE OF ILLINOIS
DEPARTMENT OF TRANSPORTATION**

PATCH SCHEDULE

SCALE: SHEET 3 OF 5 SHEETS STA. TO STA.

F.A.P. SITE	SECTION	COUNTY	TOTAL SHEETS	SHEET NO.
308	109AS-2	WHITESIDE	39	21
CONTRACT NO. 64M90				
ILLINOIS FED. AID PROJECT				

PATCH SCHEDULE

LOCATION				4200060	44200919	44200924	44200926	44201003	44201007	44201011	44201013	44201294	44201297	44201798	44201807	44201809	44213200	44213204
STA	RT/LT	LENGTH	WIDTH	WELDED WIRE REINFORCEMENT	CLASS B PATCHES, TYPE II, 7 INCH	CLASS B PATCHES, TYPE III, 7 INCH	CLASS B PATCHES, TYPE IV, 7 INCH	CLASS B PATCHES, TYPE I, 13 INCH	CLASS B PATCHES, TYPE II, 13 INCH	CLASS B PATCHES, TYPE III, 13 INCH	CLASS B PATCHES, TYPE IV, 13 INCH	CLASS B PATCH - EXPANSION JOINT	DOWEL BARS 1"	CLASS D PATCHES, TYPE I, 13 INCH	CLASS D PATCHES, TYPE III, 13 INCH	CLASS D PATCHES, TYPE IV, 13 INCH	SAW CUTS	TIE BARS 3/4"
				SQ YD	SQ YD	SQ YD	SQ YD	SQ YD	SQ YD	SQ YD	SQ YD	FOOT	EACH	SQ YD	SQ YD	SQ YD	FOOT	EACH
293+00	RT	6.0	13.5						9.0				39.0	20				27
294+25	LT	6.0	13.5						9.0				39.0	20				27
294+50	LT	6.0	13.5						9.0				39.0	20				27
294+50	RT	6.0	13.5						9.0				39.0	20				27
295+00	LT	2.0	3.0											0.7				6
295+75	RT	2.0	3.0											0.7				6
296+00	LT	6.0	13.5						9.0				39.0	20				27
296+00	RT	6.0	13.5						9.0				39.0	20				27
297+00	LT	6.0	13.5						9.0				39.0	20				27
297+00	RT	6.0	13.5						9.0				39.0	20				27
297+50	LT	6.0	13.0						8.7				38.0	20				26
297+50	RT	3.0	2.0											0.7				4
298+00	LT	6.0	13.5						9.0				39.0	20				27
298+00	RT	6.0	13.5						9.0				39.0	20				27
298+50	RT	2.0	4.0											0.9				8
298+75	LT	1.0	2.0											0.2				4
299+00	LT	1.0	2.0											0.2				4
303+00	LT	3.0	3.0											1.0				6
303+50	LT	6.0	13.5						9.0				39.0	20				27
303+50	RT	6.0	13.5						9.0				39.0	20				27
305+00	LT	6.0	13.5						9.0				39.0	20				27
305+00	RT	6.0	13.5						9.0				39.0	20				27
308+00	LT	2.0	3.0											0.7				6
308+00	RT	2.0	3.0											0.7				6
309+00	LT	6.0	13.5						9.0				39.0	20				27
309+00	RT	6.0	13.5						9.0				39.0	20				27
310+00	LT	6.0	13.5						9.0				39.0	20				27
310+00	RT	6.0	13.5						9.0				39.0	20				27
311+00	LT	6.0	13.5						9.0				39.0	20				27
311+00	RT	6.0	13.5						9.0				39.0	20				27
312+00	LT	2.0	2.0											0.4				4
313+00	LT	6.0	13.5						9.0				39.0	20				27
313+00	RT	6.0	13.5						9.0				39.0	20				27
314+00	LT	1.0	3.0											0.3				6
315+00	LT	1.0	3.0											0.3				6
316+00	LT	1.0	2.0											0.2				4
317+00	LT	6.0	13.0						8.7				38.0	20				26
318+00	LT	6.0	13.0						8.7				38.0	20				26
318+00	RT	6.0	13.0						8.7				38.0	20				26
319+00	RT	4.0	2.0											0.9				4
320+00	RT	3.0	3.0											1.0				6
320+00	LT	3.0	3.0											1.0				6
321+00	LT	3.0	3.0											1.0				6
322+00	LT	3.0	3.0											1.0				6
323+00	LT	3.0	3.0											1.0				6
323+00	RT	3.0	3.0											1.0				6
324+00	RT	25.0	2.0						5.6				54.0	5.6				25
325+00	LT	6.0	6.0					4.0					24.0	10				12
325+00	RT	6.0	13.0						8.7				38.0	20				26
325+00	LT	6.0	13.5						9.0				39.0	20				27
328+00	RT	6.0	13.5						9.0				39.0	20				27
327+00	LT	3.0	3.0											1.0				6
328+00	RT	3.0	3.0											1.0				6
329+00	LT	3.0	3.0											1.0				6
329+00	RT	5.0	2.0											1.1				4
330+00	LT	6.0	13.5						9.0				39.0	20				27
330+00	RT	6.0	13.5						9.0				39.0	20				27
331+00	LT	6.0	13.5						9.0				39.0	20				27
331+00	RT	6.0	13.5						9.0				39.0	20				27
332+00	LT	6.0	13.5						9.0				39.0	20				27
332+00	RT	6.0	13.5						9.0				39.0	20				27
333+00	LT	1.0	2.0											0.2				4
334+00	RT	2.0	2.0											0.4				4
335+00	RT	2.0	2.0											0.4				4
352+50	RT	28.0	2.0											6.2				28
353+00	RT	4.0	3.0											1.3				6
353+50	RT	17.0	2.0											0.9				4
354+75	RT	4.0	4.0											0.1				8
355+25	RT	4.0	4.0											0.1				8
356+00	RT	12.0	6.0											0.2				12
356+20	LT	0.0	3.0											2.7				6
356+50	RT	3.0	3.0											1.0				6

MODEL NUMBER: 6485
FILE NAME: P12.DWG

ARORA AND ASSOCIATES, P.C.
Consulting Engineers

USER NAME = sks8rs	DESIGNED -	REVISED -
DRAWN -	REVISED -	
PLOT SCALE = SCALE: 1:2	CHECKED -	REVISED -
PLOT DATE = 12-MAY-2021 10:24	DATE -	REVISED -

STATE OF ILLINOIS
DEPARTMENT OF TRANSPORTATION

PATCH SCHEDULE

SCALE: SHEET 4 OF 5 SHEETS STA. TO STA.

F.A.P. SITE	SECTION	COUNTY	TOTAL SHEET NO.
308	109RS-2	WHITESIDE	39 22
			CONTRACT NO. 64M90
		ILLINOIS	FED. AID PROJECT

PATCH SCHEDULE

LOCATION				4200060	44200919	44200924	44200926	44201003	44201007	44201011	44201013	44201294	44201297	44201798	44201807	44201809	44213200	44213204
				WELDED WIRE REINFORCEMENT	CLASS B PATCHES, TYPE II, 7 INCH	CLASS B PATCHES, TYPE III, 7 INCH	CLASS B PATCHES, TYPE IV, 7 INCH	CLASS B PATCHES, TYPE I, 13 INCH	CLASS B PATCHES, TYPE II, 13 INCH	CLASS B PATCHES, TYPE III, 13 INCH	CLASS B PATCHES, TYPE IV, 13 INCH	CLASS B PATCH - EXPANSION JOINT	DOWEL BARS 1"	CLASS D PATCHES, TYPE I, 13 INCH	CLASS D PATCHES, TYPE III, 13 INCH	CLASS D PATCHES, TYPE IV, 13 INCH	SAW CUTS	TIE BARS 3/4"
STA	RT/LT	LENGTH	WIDTH	SQ YD	SQ YD	SQ YD	SQ YD	SQ YD	SQ YD	SQ YD	SQ YD	FOOT	EACH	SQ YD	SQ YD	SQ YD	FOOT	EACH
360+00	RT	6.0	6.0											1.0			12	
361+25	LT	1.6	1.6											1.6			4	
362+50	RT	2.0	2.0											0.4			4	
363+75	LT	6.0	14.0					9.3				40.0	20				28	
364+50	RT	6.0	6.0											0.4			12	
365+00	LT	6.0	13.5					9.0				39.0	20				27	
365+00	RT	6.0	13.5					9.0				39.0	20				27	
365+25	LT	2.0	3.0											0.7			6	
365+75	RT	2.0	2.0											0.4			4	
366+50	LT	6.0	13.5					9.0				39.0	20				27	
366+50	LT	6.0	13.5					9.0				39.0	20				27	
366+00	RT	3.0	3.0											1.0			6	
366+50	RT	2.0	3.0											0.7			6	
371+25	RT	4.0	4.0											1.8			8	
371+75	RT	3.0	5.0											1.7			10	
372+00	LT	2.0	3.0											0.7			6	
373+00	RT	6.0	13.0					8.7				38.0	20				26	
373+25	RT	2.0	3.0											0.7			6	
374+10	LT	6.0	14.0					9.3				40.0	20				28	
374+25	LT	6.0	13.5					9.0				39.0	20				27	
374+25	RT	6.0	13.5					9.0				39.0	20				27	
375+25	LT	2.0	3.0											0.7			6	
375+25	RT	2.0	3.0											0.7			6	
375+75	LT	5.0	4.0											2.2			8	
375+75	RT	4.0	4.0											1.8			8	
376+00	RT	3.0	3.0											1.0			6	
376+50	RT	30.0	2.0											6.7			4	30
376+60	RT	2.0	3.0											0.7			6	
376+99	RT	1.0	3.0											0.3			6	
377+00	LT	2.0	2.0											0.4			4	
377+25	LT	6.0	13.5					9.0				39.0	20				27	
377+25	RT	6.0	13.5					9.0				39.0	20				27	
377+50	LT	2.0	2.0											0.4			4	
377+75	RT	2.0	3.0											0.7			6	
378+00	LT	6.0	13.0					8.7				38.0	20				26	
379+75	LT	1.0	3.0											0.3			6	
382+00	RT	3.0	5.0											1.7			10	
382+50	LT	2.0	2.0											0.4			4	
383+00	RT	3.0	3.0											1.0			6	
383+75	RT	2.0	2.0											0.4			4	
383+90	LT	1.0	1.0											0.1			2	
383+90	LT	1.0	1.0											0.1			2	
384+00	RT	6.0	14.0					9.3				40.0	20				28	
384+50	LT	5.0	3.0											1.7			6	
384+75	LT	6.0	13.0					8.7				38.0	20				26	
385+00	LT	6.0	13.5					9.0				39.0	20				27	
385+00	RT	6.0	13.5					9.0				39.0	20				27	
385+25	LT	14.0	2.0											3.1			4	
385+50	LT	2.0	2.0											0.4			4	
385+50	RT	8.0	4.0											3.6			8	
385+75	LT	3.0	2.0											0.7			4	
386+25	LT	2.0	2.0											0.4			4	
386+25	LT	3.0	4.0											1.3			8	
386+50	LT	10.0	6.0					6.7				32.0	10				12	
386+75	LT	18.0	2.0											4.0			4	
386+75	RT	6.0	15.0									42.0	20				30	
387+00	LT	6.0	6.0					4.0				24.0	10				12	
387+20	LT	6.0	6.0					4.0				24.0	10				12	
387+40	LT	2.0	2.0											0.4			4	
387+60	LT	4.0	4.0											1.8			8	
387+80	LT	2.0	2.0											0.4			4	
388+10	RT	3.0	3.0											1.0			6	
388+25	LT	4.0	4.0											1.6			8	
388+75	LT	4.0	2.0											0.9			4	
388+00	RT	4.0	4.0											1.8			8	
388+25	LT	7.0	4.0											3.1			8	
389+50	LT	2.0	3.0											0.7			6	
389+75	LT	6.0	3.0											1.7			6	
389+90	RT	8.0	3.0											2.0			6	
389+90	RT	8.0	3.0											2.7			6	
390+25	RT	6.0	14.0					9.3				40.0	20				28	
390+50	RT	6.0	14.0					9.3				40.0	20				28	

SHEET 27 - GARDEN PLAIN RD																			
CONTINGENCY				147.2	49.1	49.1	49.1						300.0				450	602	
TOTAL				837	49	49	49	12	2135	45	672	10,576	5,170	223	39	300	8,168	1,597	

ARORA AND ASSOCIATES, P.C.
 Consulting Engineers
 400 N. WABASH ST. CHICAGO, IL 60610
 TEL: 312.467.1100 FAX: 312.467.1101

USER NAME = SRSERS	DESIGNED -	REVISED -
	DRAWN -	REVISED -
PLOT SCALE = SCALE: 1/2	CHECKED -	REVISED -
PLOT DATE = 12-MAY-2021 10:23	DATE -	REVISED -

STATE OF ILLINOIS
DEPARTMENT OF TRANSPORTATION

PATCH SCHEDULE

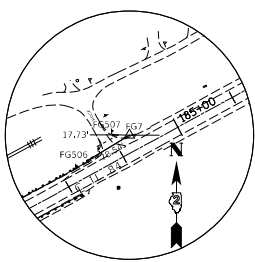
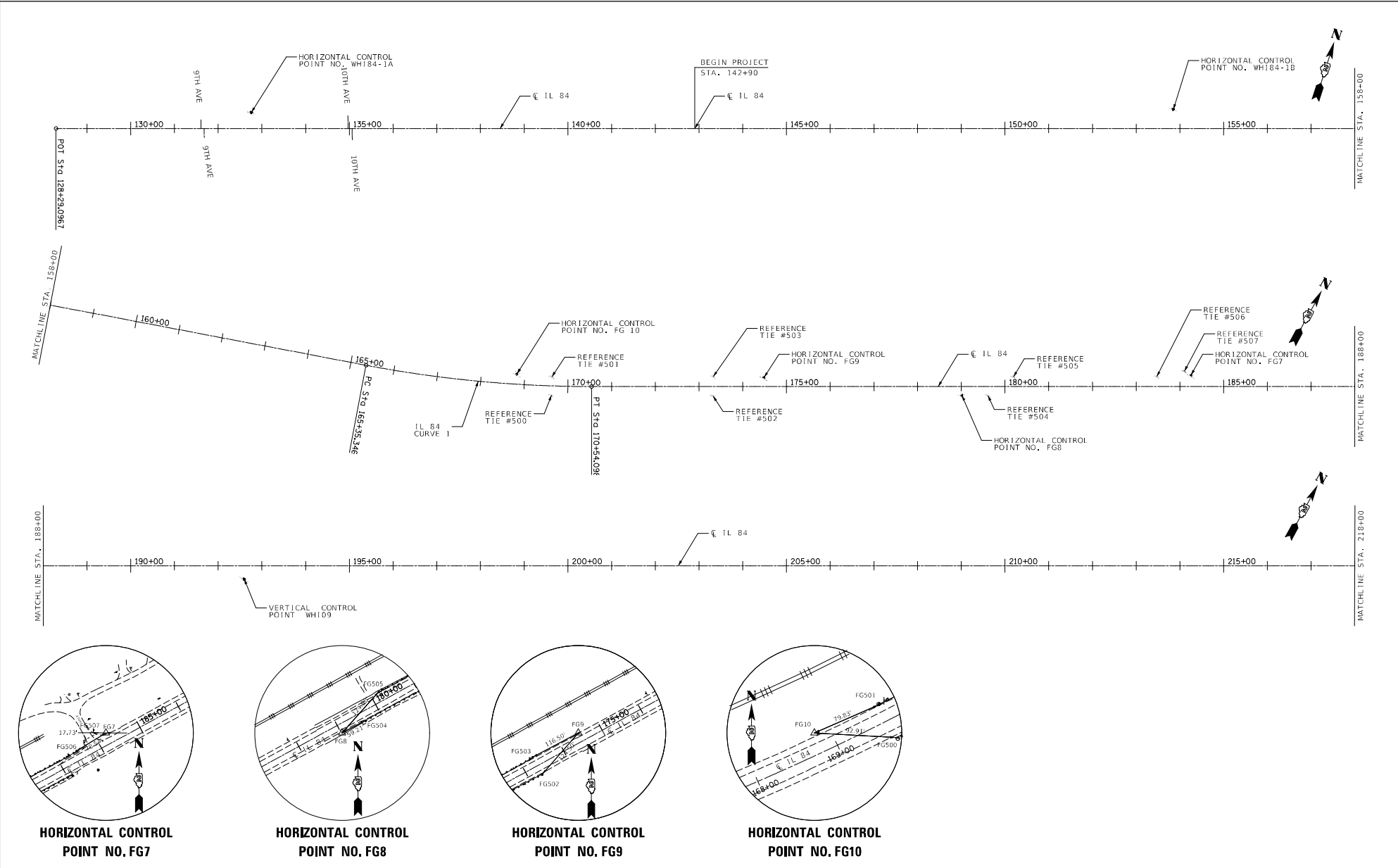
SCALE:	SHEET 5	OF 5	SHEETS	STA.	TO STA.
--------	---------	------	--------	------	---------

F.A.P. SITE:	SECTION:	COUNTY:	TOTAL SHEETS:	SHEET NO.:
308	1094S-2	WHITESIDE	39	23
CONTRACT NO. 64M90				
ILLINOIS FED. AID PROJECT				

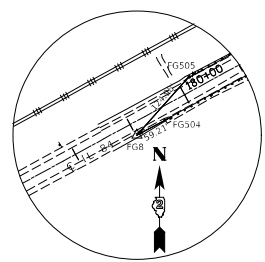
DATE	
BY	
DESIGNED	
DRAWN	
CHECKED	
DATE	
BY	
DESIGNED	
DRAWN	
CHECKED	
DATE	
BY	
DESIGNED	
DRAWN	
CHECKED	
DATE	

DATE	
BY	
DESIGNED	
DRAWN	
CHECKED	
DATE	
BY	
DESIGNED	
DRAWN	
CHECKED	
DATE	
BY	
DESIGNED	
DRAWN	
CHECKED	
DATE	

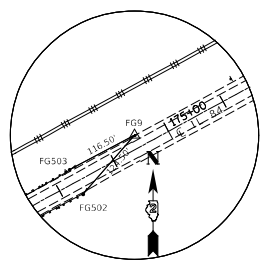
ARORA AND ASSOCIATES, P.C.
CONSULTING ENGINEERS



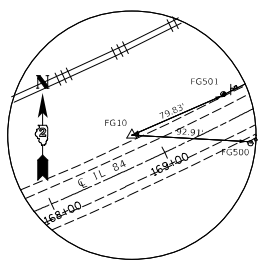
HORIZONTAL CONTROL POINT NO. FG7



HORIZONTAL CONTROL POINT NO. FG8



HORIZONTAL CONTROL POINT NO. FG9



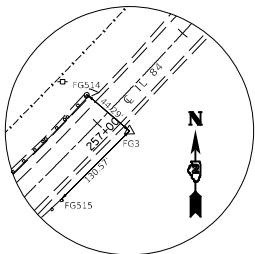
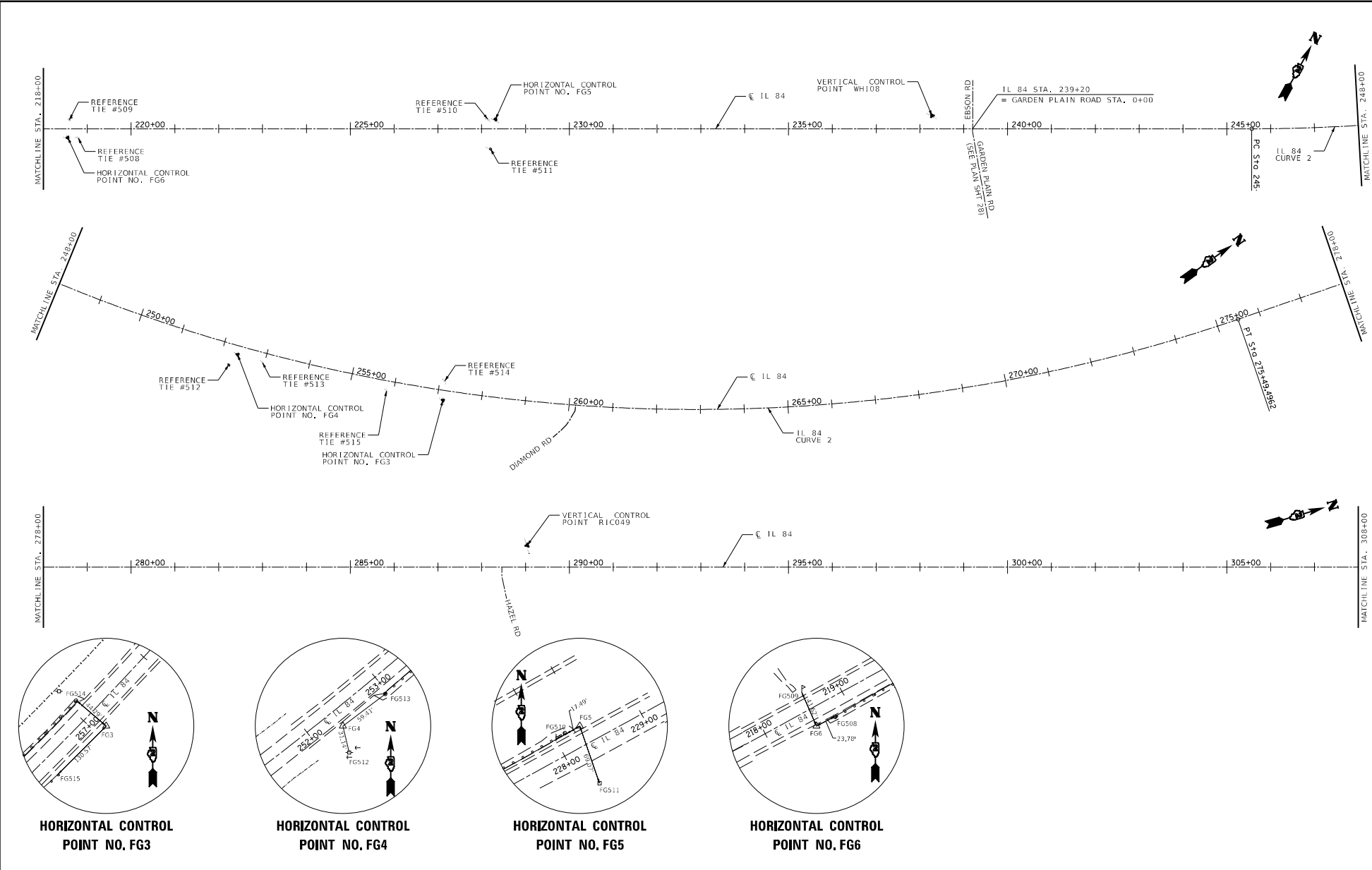
HORIZONTAL CONTROL POINT NO. FG10

ARORA AND ASSOCIATES, P.C. Consulting Engineers	USER NAME = SRSRS	DESIGNED -	REVISED -	STATE OF ILLINOIS DEPARTMENT OF TRANSPORTATION	HORIZONTAL AND VERTICAL CONTROL IL 84			F.A.P. SITE = 308	SECTION = 109RS-1	COUNTY = WHITESIDE	TOTAL SHEETS = 39	SHEET NO. = 24
	PLOT SCALE = SCALE: 1:200	CHECKED -	REVISED -		SCALE: 1"=100'	SHEET 1	OF 5 SHEETS	STA.	CONTRACT NO. 64M90			
	PLOT DATE = 12-MAY-2021 10:23	DATE -	REVISED -			ILLINOIS FED. AID PROJECT						

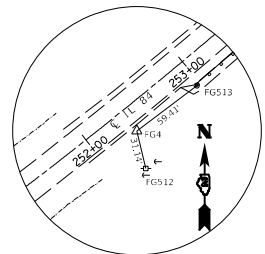
DATE	
BY	
DESIGNED	
DRAWN	
CHECKED	
REVISIONS	
NO.	

DATE	
BY	
DESIGNED	
DRAWN	
CHECKED	
REVISIONS	
NO.	

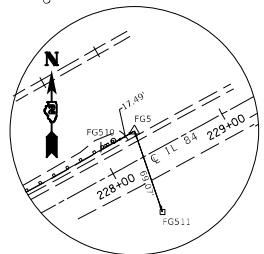
ARORA AND ASSOCIATES, P.C.
CONSULTING ENGINEERS



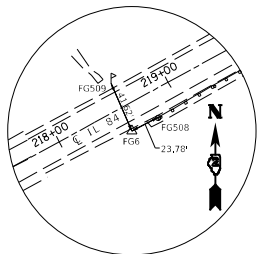
HORIZONTAL CONTROL POINT NO. FG3



HORIZONTAL CONTROL POINT NO. FG4



HORIZONTAL CONTROL POINT NO. FG5



HORIZONTAL CONTROL POINT NO. FG6

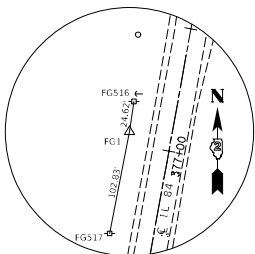
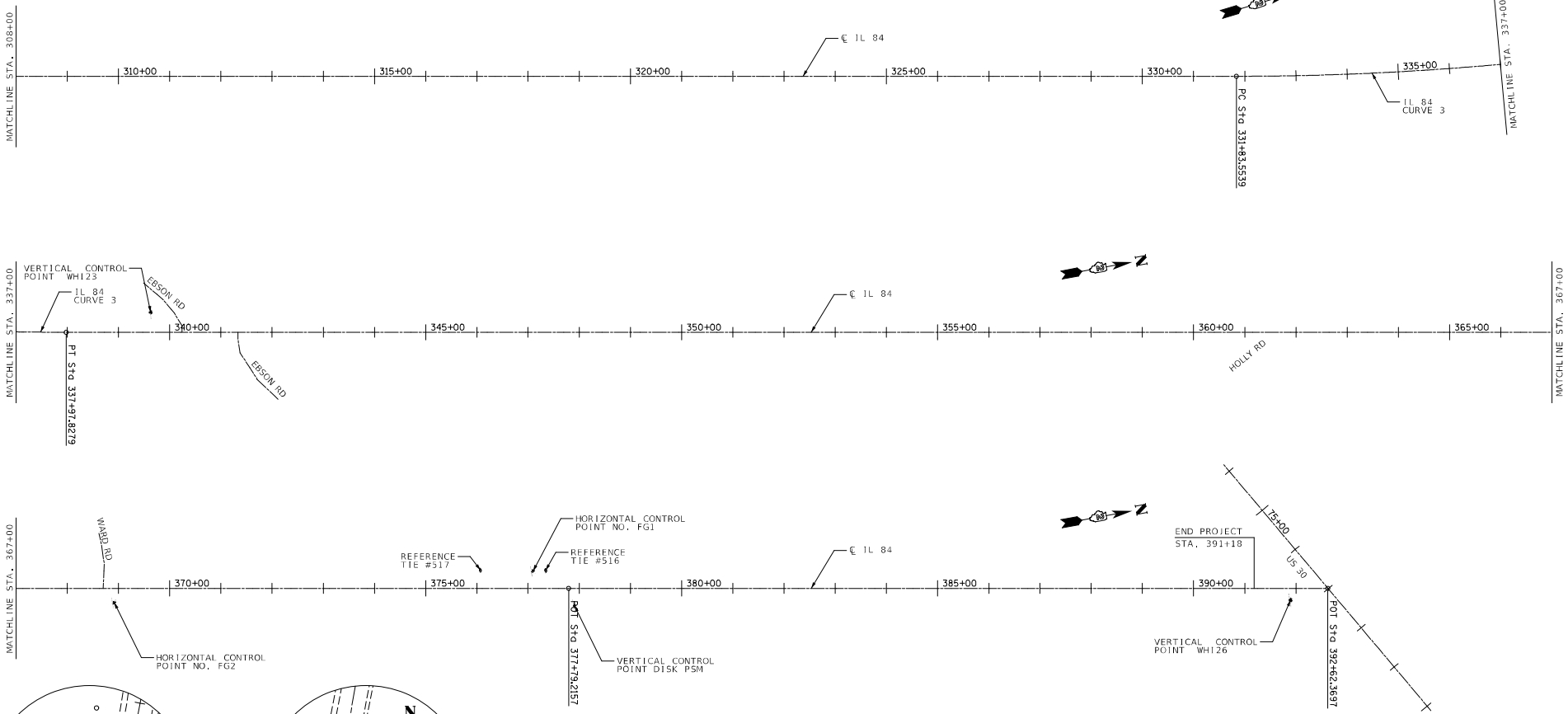
<p>ARORA AND ASSOCIATES, P.C. Consulting Engineers</p>	USER NAME = sksers	DESIGNED =	REVISED =	STATE OF ILLINOIS DEPARTMENT OF TRANSPORTATION	HORIZONTAL AND VERTICAL CONTROL IL 84	F.A.P. SITE =	SECTION =	COUNTY =	TOTAL SHEETS =	SHEET NO. =
	PLLOT SCALE = SCALE: 1:200	DRAWN =	REVISED =			308	1094S-2	WHITESIDE	39	25
	PLLOT DATE = 12-MAY-2021 12:29	CHECKED =	REVISED =			CONTRACT NO. 64M90				
	DATE =	REVISED =	ILLINOIS FED. AID PROJECT							

SCALE: 1"=100' SHEET 2 OF 3 SHEETS STA.

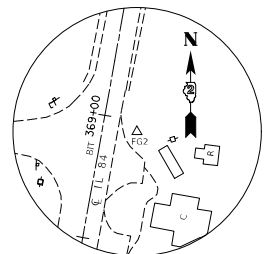
DATE	
BY	
CHECKED	
DESIGNED	
DRAWN	
NOTED	
APPROVED	

DATE	
BY	
CHECKED	
DESIGNED	
DRAWN	
NOTED	
APPROVED	

ARORA AND ASSOCIATES, P.C.
1100 N. LAUREL STREET, SUITE 200
CHICAGO, IL 60610



HORIZONTAL CONTROL POINT NO. FG1



HORIZONTAL CONTROL POINT NO. FG2

ARORA AND ASSOCIATES, P.C.
Consulting Engineers

USER NAME = SJSERS	DESIGNED -	REVISED -
PLOT SCALE = SCALE: 1:2000	DRAWN -	REVISED -
PLOT DATE = 12-MAY-2021 10:23	CHECKED -	REVISED -
	DATE -	REVISED -

**STATE OF ILLINOIS
DEPARTMENT OF TRANSPORTATION**

HORIZONTAL AND VERTICAL CONTROL		
IL-84		
SCALE: 1"=100'	SHEET 3	OF 5 SHEETS STA.

F.A.P. SITE	SECTION	COUNTY	TOTAL SHEETS	SHEET NO.
308	109AS-2	WHITESIDE	39	26
CONTRACT NO. 64M90				
ILLINOIS FED. AID PROJECT				

DATE: _____
 BY: _____
 CHECKED: _____
 DESIGNED: _____
 DRAWN: _____
 IN CHARGE: _____
 PROJECT: _____
 SHEET: _____

DATE: _____
 BY: _____
 CHECKED: _____
 DESIGNED: _____
 DRAWN: _____
 IN CHARGE: _____
 PROJECT: _____
 SHEET: _____

ARORA AND ASSOCIATES, P.C.
 CONSULTING ENGINEERS
 1100 N. LAKE STREET
 SUITE 200
 DECATUR, IL 62521
 TEL: 312.401.1000
 FAX: 312.401.1001
 WWW.AAASOCIATES.COM

ALIGNMENT COORDINATES - IL 84			
IL 84	STATION	N	E
POT	128+29.10	1866836.4120	2284042.1130
PC	165+35.35	1867975.6269	2287568.9358
PI	167+95.49	1868055.5893	2287816.4865
PT	170+54.10	1868180.4756	2288144.6942
PC	245+56.89	1871782.3010	2294626.3941
PI	261+34.67	1872539.7381	2296010.4765
PT	275+49.50	1874053.0259	2296456.9681
PC	331+83.55	1879456.7845	2298051.3331
PI	334+90.99	1879751.6532	2298138.3334
PT	337+97.83	1880054.1777	2298193.0644
POT	377+79.22	18885431.4292	2299165.8870

CURVE POINT NUMBERS					
CHAIN	CURVE	PI	CC	PC	PT
IL84	A06006200	06006200	6006201	6006202	6006203
IL84	A06006210	06006210	6006211	6006212	6006213
IL84	A06006220	06006220	6006221	6006222	6006223

EXIST. CURVE A06006200
 PI STA = 167+95.4916
 N = 1,868,055.5893
 E = 2,287,816.4865
 $\Delta = 10^\circ 47' 18.2719''$ (LT)
 D = 2' 04" 46.8731"
 R = 2,755.0194'
 T = 260.1448'
 L = 518.7516'
 E = 12,2549'
 $\phi =$ _____
 T.R. = _____
 S.E. RUN = _____
 P.C. STA = 165+35.3468
 N = 1,867,975.6269
 E = 2,287,568.9358
 P.T. STA = 170+54.0983
 N = 1,868,180.4756
 E = 2,288,044.6942

EXIST. CURVE A06006210
 PI STA = 261+34.6741
 N = 1,872,539.7381
 E = 2,296,010.4765
 $\Delta = 44^\circ 52' 18.5688''$ (LT)
 D = 1' 29" 57.9272"
 R = 3,821.1854'
 T = 1,577.7817'
 L = 2,992.6037'
 E = 312.9231'
 $\phi =$ _____
 T.R. = _____
 S.E. RUN = _____
 P.C. STA = 245+56.8924
 N = 1,871,782.3010
 E = 2,294,626.3941
 P.T. STA = 275+49.4952
 N = 1,874,053.0259
 E = 2,296,456.9681

EXIST. CURVE A06006220
 PI STA = 334+90.9894
 N = 1,879,751.6532
 E = 2,298,138.3334
 $\Delta = 6^\circ 11' 01.8291''$ (LT)
 D = 1' 00" 24.0877"
 R = 5,691.4959'
 T = 307.4355'
 L = 614.2740'
 E = 6,2973'
 $\phi =$ _____
 T.R. = _____
 S.E. RUN = _____
 P.C. STA = 331+83.5539
 N = 1,879,456.7845
 E = 2,298,051.3331
 P.T. STA = 337+97.8279
 N = 1,880,054.1777
 E = 2,298,193.0644

HORIZONTAL CONTROL POINTS							
POINT	NORTH	EAST	ELEVATION	CHAIN	STATION	OFFSET	DESCRIPTION
WHI81-1A	1867008.8100	2284456.0300	583.58	IL84	132+75.97	36.82'LT	NGS MONUMENT
WHI81-1B	1867663.7400	2286460.7800	584.30	IL84	153+84.98	43.83'LT	NGS MONUMENT
FG1	1883909.6760	2298856.1210	589.95	IL84	377+09.78	33.91'LT	PIN WITH CAP
FG2	1883093.5820	2298771.2200	589.55	IL84	368+91.61	27.83'RT	PIN WITH CAP
FG3	1872465.7770	2295558.7020	590.20	IL84	257+13.65	22.79'RT	PIN WITH CAP
FG4	1872144.1670	2295202.9950	590.07	IL84	252+36.48	19.95'RT	PIN WITH CAP
FG5	1870973.2910	2293102.3810	587.62	IL84	228+31.60	21.93'LT	PIN WITH CAP
FG6	1870467.6180	2292266.4780	585.94	IL84	218+55.57	20.37'RT	PIN WITH CAP
FG7	1868861.8660	2289235.3910	584.45	IL84	184+25.73	26.13'LT	PIN WITH CAP
FG8	1868569.5270	2288798.0230	584.70	IL84	179+01.72	20.36'RT	PIN WITH CAP
FG9	1868388.4310	2288381.0180	585.62	IL84	174+48.97	20.97'LT	PIN WITH CAP
FG10	1868124.3110	2287881.1090	585.74	IL84	168+82.03	23.94'LT	PIN WITH CAP

VERTICAL CONTROL POINTS							
POINT	NORTH	EAST	ELEVATION	CHAIN	STATION	OFFSET	DESCRIPTION
WHI09	1869212.3550	2289993.9274	583.43	IL84	192+59.40	30.56'RT	NGS VERTICAL MONUMENT DP3568
WHI08	1871458.6356	2293971.7670	587.13	IL84	238+27.25	30.33'LT	NGS VERTICAL MONUMENT DP3567
RIC049	1875365.9980	2296792.9760	591.28	IL84	289+03.89	49.28'LT	NGS VERTICAL MONUMENT DP3521
WHI23	1880223.6300	2298183.8700	585.37	IL84	339+62.94	39.21'LT	NGS VERTICAL MONUMENT DP3571
WHI24	1883977.1300	2298937.5100	589.71	IL84	377+60.65	34.17'RT	DISK PSM
WHI26	1885355.5000	2299175.6000	588.06	IL84	391+89.39	23.08'RT	NGS VERTICAL MONUMENT DP3572

REFERENCE TIES							
POINT	NORTH	EAST	CHAIN	STATION	OFFSET	DESCRIPTION	
FG500	1868118.9170	2287973.8630	IL84	169+63.11	21.51'RT	END OF GUARDRAIL	
FG501	1868156.2120	2287954.2880	IL84	169+62.44	20.60'LT	END OF GUARDRAIL	
FG502	1868294.6280	2288299.1520	IL84	173+32.12	22.02'RT	END OF GUARDRAIL	
FG503	1868333.9800	2288278.0280	IL84	173+32.48	22.64'LT	END OF GUARDRAIL	
FG504	1868597.4910	2288850.2180	IL84	179+60.93	20.88'RT	END OF GUARDRAIL	
FG505	1868663.1050	2288880.8720	IL84	180+19.32	21.96'LT	END OF GUARDRAIL	
FG506	1868821.0260	2289168.3090	IL84	183+47.28	22.50'LT	END OF GUARDRAIL	
FG507	1868862.0840	2289217.6590	IL84	184+10.28	34.83'LT	END OF 15" CMP	
FG508	1870478.5160	2292287.6190	IL84	218+79.34	20.96'RT	END OF GUARDRAIL	
FG509	1870505.7240	2292249.7440	IL84	218+59.18	21.09'LT	MAILBOX	
FG510	1870964.5500	2293087.2330	IL84	228+14.12	21.54'LT	END OF GUARDRAIL	
FG511	1870908.0360	2293125.0270	IL84	228+20.14	46.18'RT	ABOVE GROUND SPLICE BOX CABLE	
FG512	1872113.8850	2295210.2570	IL84	252+23.29	48.11'RT	POWER POLE	
FG513	1872179.9750	2295250.3980	IL84	252+95.51	22.29'RT	END OF GUARDRAIL	
FG514	1872494.6610	2295525.1260	IL84	257+11.12	21.43'LT	END OF GUARDRAIL	
FG515	1872373.3120	2295466.3090	IL84	255+83.85	22.84'RT	END OF GUARDRAIL	
FG516	1883934.0460	2298859.6070	IL84	377+34.38	34.82'LT	POWER POLE	
FG517	1883808.7590	2298836.3950	IL84	376+06.97	35.35'LT	POWER POLE	

ARORA AND ASSOCIATES, P.C.
 CONSULTING ENGINEERS

USER NAME = SRS	DESIGNED -	REVISED -
PLOT SCALE = SCALE: 1:200	DRAWN -	REVISED -
PLOT DATE = 12-MAY-2021 10:23	CHECKED -	REVISED -
	DATE -	REVISED -

STATE OF ILLINOIS
 DEPARTMENT OF TRANSPORTATION

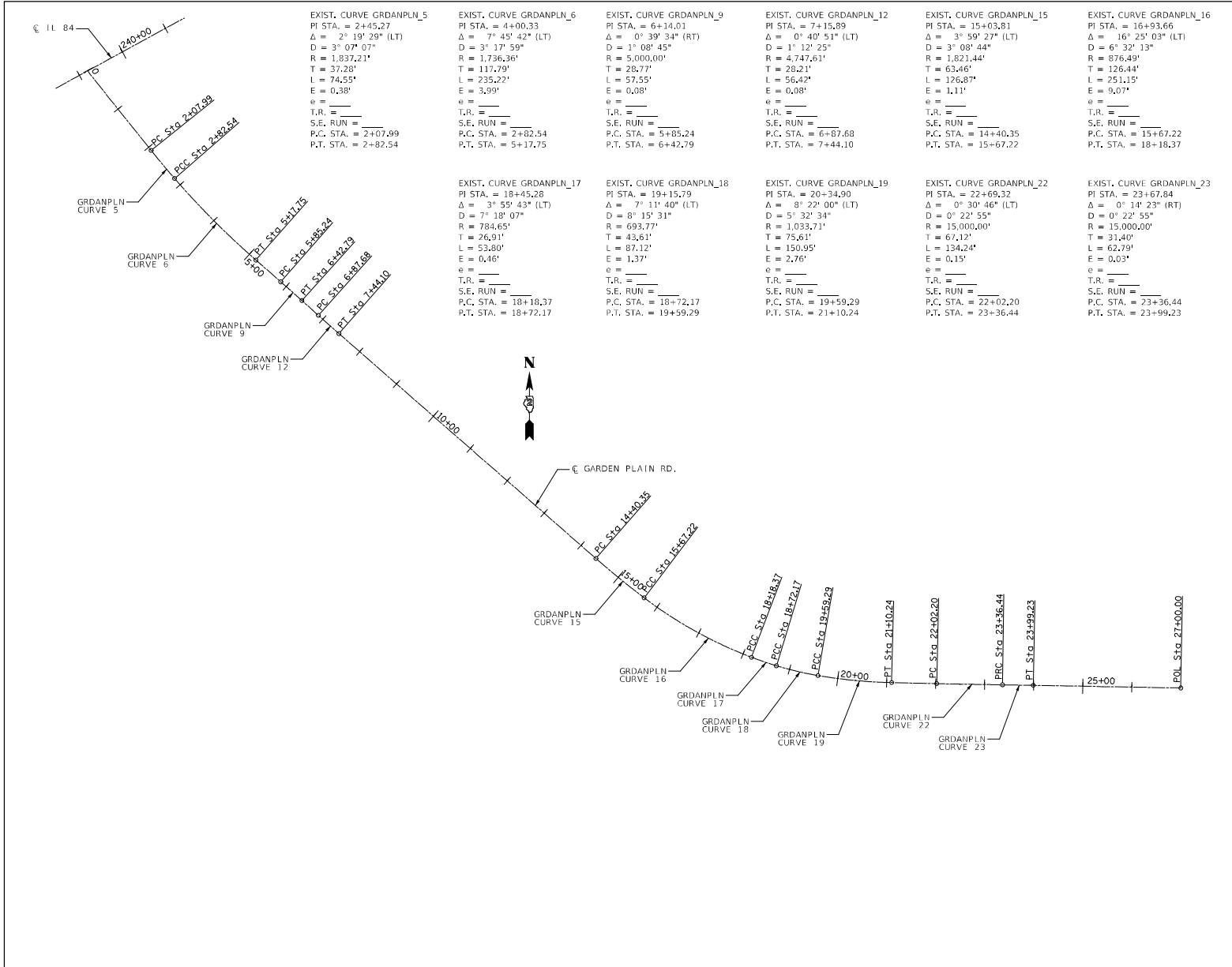
HORIZONTAL AND VERTICAL CONTROL
 IL-84

F.A.P. SITE: 308	SECTION: 1099S-2	COUNTY: WHITESIDE	TOTAL SHEETS: 39	SHEET NO.: 27
SCALE: 1"=100'				SHEET 4 OF 5 SHEETS
CONTRACT NO. 64M90				ILLINOIS FED. AID PROJECT

DATE	
BY	
DESIGNED	
DRAWN	
CHECKED	
IN CHARGE	
APPROVED	
DATE	
BY	
DESIGNED	
DRAWN	
CHECKED	
IN CHARGE	
APPROVED	

DATE	
BY	
DESIGNED	
DRAWN	
CHECKED	
IN CHARGE	
APPROVED	
DATE	
BY	
DESIGNED	
DRAWN	
CHECKED	
IN CHARGE	
APPROVED	

ARORA AND ASSOCIATES, P.C.
CONSULTING ENGINEERS



EXIST. CURVE GRDANPLN_5
PI STA. = 2+45.27
 $\Delta = 2^\circ 19' 29''$ (LT)
D = 3° 07' 07"
R = 1,837.21'
T = 37.28'
L = 74.55'
E = 0.38'
e = _____
T.R. = _____
S.E. RUN = _____
P.C. STA. = 2+07.99
P.T. STA. = 2+82.54

EXIST. CURVE GRDANPLN_6
PI STA. = 4+00.33
 $\Delta = 7^\circ 45' 42''$ (LT)
D = 3° 17' 59"
R = 1,736.36'
T = 117.79'
L = 235.22'
E = 3.99'
e = _____
T.R. = _____
S.E. RUN = _____
P.C. STA. = 2+82.54
P.T. STA. = 5+17.75

EXIST. CURVE GRDANPLN_9
PI STA. = 6+14.01
 $\Delta = 0^\circ 39' 34''$ (RT)
D = 1° 08' 45"
R = 5,000.00'
T = 28.77'
L = 57.55'
E = 0.08'
e = _____
T.R. = _____
S.E. RUN = _____
P.C. STA. = 5+85.24
P.T. STA. = 6+42.79

EXIST. CURVE GRDANPLN_12
PI STA. = 7+15.89
 $\Delta = 0^\circ 40' 51''$ (LT)
D = 1° 12' 25"
R = 4,747.61'
T = 28.21'
L = 56.42'
E = 0.08'
e = _____
T.R. = _____
S.E. RUN = _____
P.C. STA. = 6+87.68
P.T. STA. = 7+44.10

EXIST. CURVE GRDANPLN_15
PI STA. = 15+03.81
 $\Delta = 3^\circ 59' 22''$ (LT)
D = 3° 08' 44"
R = 1,821.44'
T = 126.87'
L = 126.87'
E = 1.11'
e = _____
T.R. = _____
S.E. RUN = _____
P.C. STA. = 14+40.35
P.T. STA. = 15+67.22

EXIST. CURVE GRDANPLN_16
PI STA. = 16+93.66
 $\Delta = 16^\circ 25' 03''$ (LT)
D = 6° 32' 13"
R = 876.49'
T = 251.15'
L = 251.15'
E = 9.07'
e = _____
T.R. = _____
S.E. RUN = _____
P.C. STA. = 15+67.22
P.T. STA. = 18+18.37

EXIST. CURVE GRDANPLN_17
PI STA. = 18+45.28
 $\Delta = 3^\circ 55' 43''$ (LT)
D = 7° 18' 07"
R = 784.65'
T = 26.91'
L = 53.80'
E = 0.46'
e = _____
T.R. = _____
S.E. RUN = _____
P.C. STA. = 18+18.37
P.T. STA. = 18+72.17

EXIST. CURVE GRDANPLN_18
PI STA. = 19+15.79
 $\Delta = 7^\circ 11' 40''$ (LT)
D = 8° 15' 31"
R = 693.77'
T = 43.61'
L = 87.12'
E = 1.37'
e = _____
T.R. = _____
S.E. RUN = _____
P.C. STA. = 19+72.17
P.T. STA. = 19+59.29

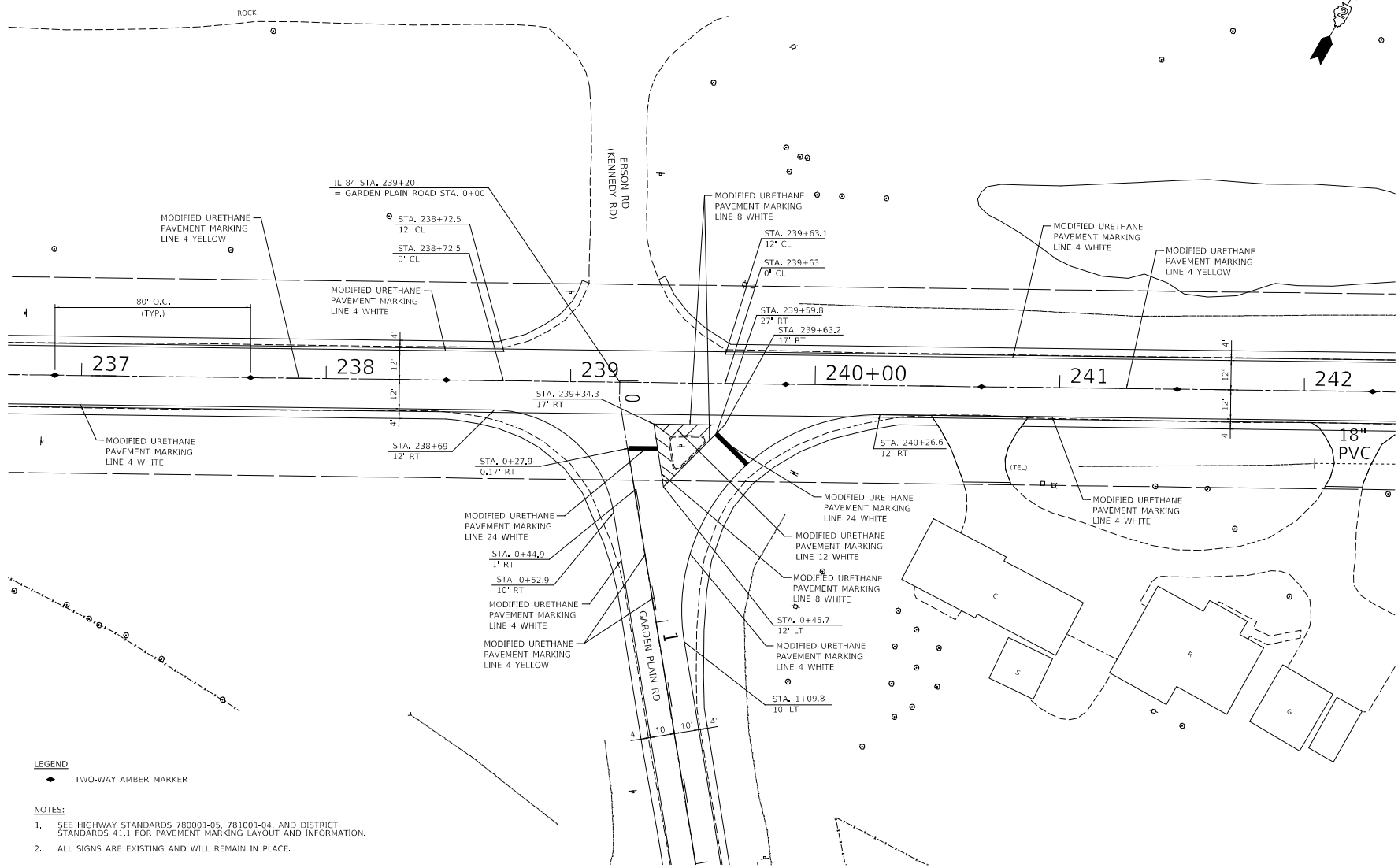
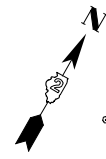
EXIST. CURVE GRDANPLN_19
PI STA. = 20+34.90
 $\Delta = 8^\circ 22' 00''$ (LT)
D = 5° 32' 34"
R = 1,033.71'
T = 75.61'
L = 150.95'
E = 2.76'
e = _____
T.R. = _____
S.E. RUN = _____
P.C. STA. = 19+59.29
P.T. STA. = 21+10.24

EXIST. CURVE GRDANPLN_22
PI STA. = 22+69.32
 $\Delta = 0^\circ 30' 46''$ (LT)
D = 0° 22' 55"
R = 15,000.00'
T = 67.12'
L = 134.24'
E = 0.15'
e = _____
T.R. = _____
S.E. RUN = _____
P.C. STA. = 22+02.20
P.T. STA. = 23+36.44

EXIST. CURVE GRDANPLN_23
PI STA. = 23+67.84
 $\Delta = 0^\circ 14' 23''$ (RT)
D = 0° 22' 55"
R = 15,000.00'
T = 31.40'
L = 62.79'
E = 0.03'
e = _____
T.R. = _____
S.E. RUN = _____
P.C. STA. = 23+36.44
P.T. STA. = 23+99.23

ALIGNMENT COORDINATES - GARDEN PLAIN RD			
IL 84	STATION	N	E
POT	0+00.00	1871477.0614	2294067.4786
PI	0+07.58	1871470.4095	2294071.1127
PC	2+07.99	1871313.9780	2294196.3868
PI	2+45.27	1871284.8808	2294219.6885
PCC	2+82.54	1871256.7527	2294244.1514
PI	4+00.33	1871167.8738	2294321.4491
PT	5+17.75	1871090.2484	2294410.0418
PC	5+85.24	1871045.7753	2294460.7983
PI	6+14.01	1871026.8126	2294482.4402
PT	6+42.79	1871007.6020	2294503.8624
PC	6+87.68	1870977.6271	2294537.2882
PI	7+15.89	1870958.7941	2294558.2894
PT	7+44.10	1870940.2120	2294579.5129
PC	14+40.35	1870481.5659	2295103.3540
PI	15+03.81	1870439.7620	2295151.1002
PCC	15+67.22	1870401.3825	2295201.6399
PI	16+93.66	1870324.9140	2295302.3371
PCC	18+18.37	1870280.0237	2295420.5413
PI	18+45.28	1870270.4696	2295445.6990
PCC	18+72.17	1870262.6616	2295471.4521
PI	19+15.79	1870250.0069	2295513.1908
PCC	19+59.29	1870242.6792	2295556.1858
PI	20+34.90	1870229.9761	2295630.7196
PT	21+10.24	1870228.2535	2295706.3086
PC	22+02.20	1870226.1583	2295798.2489
PI	22+69.32	1870224.6291	2295865.3534
PRC	23+36.44	1870223.7004	2295932.4689
PI	23+67.84	1870223.2661	2295963.8614
PT	23+99.23	1870222.7003	2295995.2518
POL	27+00.00	1870217.2803	2296295.9698

<p>ARORA AND ASSOCIATES, P.C. CONSULTING ENGINEERS</p>	USER NAME = KUSERS PLOT SCALE = SCALE: 1:200 PLOT DATE = 12-MAY-2021 10:23	DESIGNED - DRAWN - CHECKED - DATE -	REVISED - REVISED - REVISED - REVISED -	STATE OF ILLINOIS DEPARTMENT OF TRANSPORTATION	HORIZONTAL AND VERTICAL CONTROL GARDEN PLAIN RD	F.A.P. SITE = 308 SECTION = 1099S-2 COUNTY = WHITESIDE TOTAL SHEETS = 39 SHEET NO. = 28 CONTRACT NO. 64M90
	SCALE: SHEET 5 OF 5 SHEETS STA.	ILLINOIS FED. AID PROJECT				



LEGEND
 ◆ TWO-WAY AMBER MARKER

- NOTES:**
- SEE HIGHWAY STANDARDS 780001-05, 781001-04, AND DISTRICT STANDARDS 41.1 FOR PAVEMENT MARKING LAYOUT AND INFORMATION.
 - ALL SIGNS ARE EXISTING AND WILL REMAIN IN PLACE.

MODEL NUMBER: 04/04
 FILE NAME: 11025



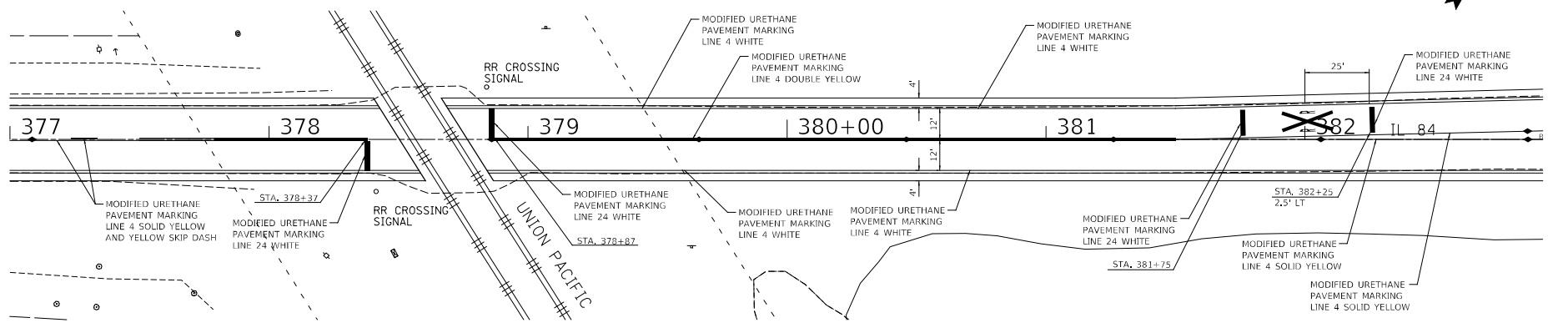
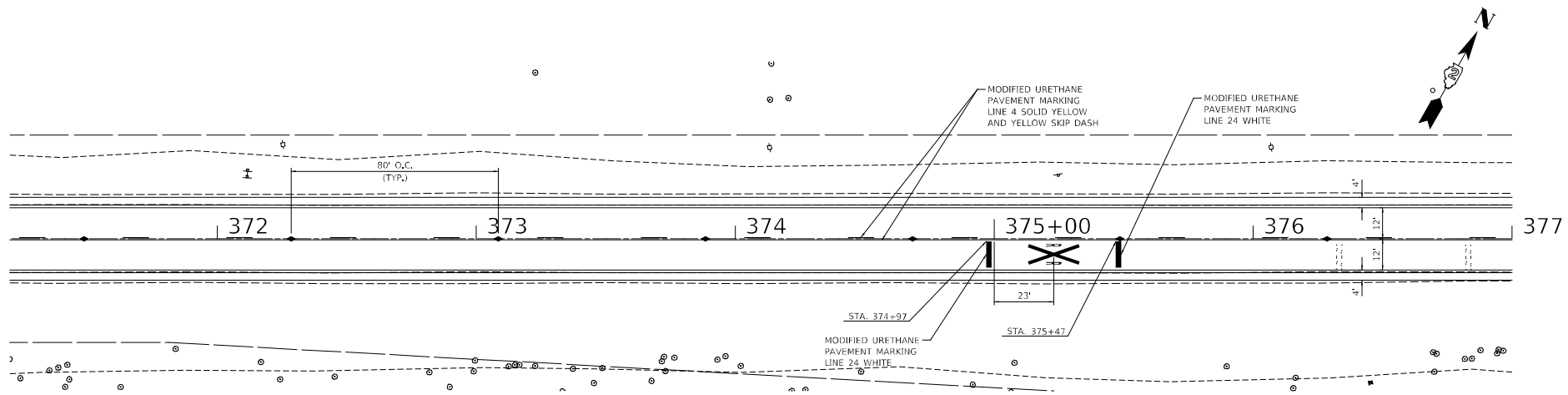
USER NAME = SJSERS	DESIGNED -	REVISED -
DRAWN -	CHECKED -	REVISED -
PLOT SCALE = SCALE: 1/80	DATE -	REVISED -
PLOT DATE = 12-MAY-2021 10:26		

**STATE OF ILLINOIS
 DEPARTMENT OF TRANSPORTATION**

**PAVEMENT MARKING PLAN
 IL 84 & GARDEN PLAIN ROAD**

SCALE: 1"=20' SHEET 1 OF 2 SHEETS STA. TO STA.

F.A.P. SITE = 308	SECTION = 109RS-2	COUNTY = WHITESIDE	TOTAL SHEETS = 39	SHEET NO. = 29
			CONTRACT NO. 64M90	
			ILLINOIS FED. AID PROJECT	



LEGEND
 ◆ TWO-WAY AMBER MARKER

- NOTES:**
- SEE HIGHWAY STANDARDS 780001-05, 781001-04, AND DISTRICT STANDARDS 41.1 FOR PAVEMENT MARKING LAYOUT AND INFORMATION.
 - ALL SIGNS ARE EXISTING AND WILL REMAIN IN PLACE.

MODEL NUMBER, NAME, FILE NAME, FILED



USER NAME = S42878	DESIGNED -	REVISED -
DRAWN -	REVISED -	
PLOT SCALE = SCALE: 1"=40'	CHECKED -	REVISED -
PLOT DATE = 12-MAY-2021 10:26	DATE -	REVISED -

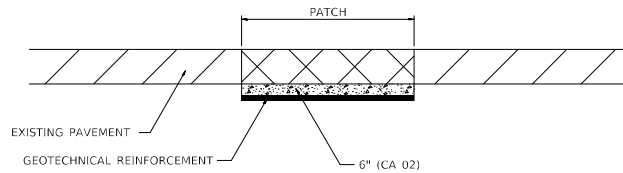
**STATE OF ILLINOIS
 DEPARTMENT OF TRANSPORTATION**

**PAVEMENT MARKING PLAN
 IL 84 & RAILROAD CROSSING**

SCALE: 1"=20' SHEET 2 OF 2 SHEETS STA. TO STA.

F.A.P. SITE = 308	SECTION = 10945-2	COUNTY = WHITESIDE	TOTAL SHEETS = 39	SHEET NO. = 30
ILLINOIS			FED. AID PROJECT	
CONTRACT NO. 64M90				

SUBGRADE REPLACEMENT



NOTES:
 THE CA 02 SHALL BE COMPACTED IN A MANNER APPROVED BY THE ENGINEER. IF THE MOISTURE CONTENT OF THE MATERIAL IS SUCH THAT COMPACTION SATISFACTORY TO THE ENGINEER CANNOT BE OBTAINED, SUFFICIENT WATER SHALL BE ADDED SO THAT SATISFACTORY COMPACTION CAN BE OBTAINED.

THE CA 02 SHALL BE PAID FOR AT THE CONTRACT UNIT PRICE PER CU YD FOR AGGREGATE SUBGRADE IMPROVEMENT WHICH SHALL ALSO INCLUDE ALL EARTH EXCAVATION.

THE GEOTECHNICAL REINFORCEMENT WILL BE PAID FOR AT THE CONTRACT UNIT PRICE PER SQ YD FOR GEOTECHNICAL REINFORCEMENT.

ALL DIMENSIONS ARE IN INCHES UNLESS OTHERWISE NOTED.

REVISED - 3-13-13

SUBGRADE REPLACEMENT 97.4

STATE OF ILLINOIS
 DEPARTMENT OF TRANSPORTATION

DETAIL
 REGION 2 /DISTRICT 2 STANDARD: 97.4

F.A.P. SITE	SECTION	COUNTY	TOTAL SHEETS	SHEET NO.
308	109R5-2	WHITESIDE	39	31
CONTRACT NO. 64M90				

SCALE: NTS SHEET 1 OF 1 SHEETS STA. TO STA.

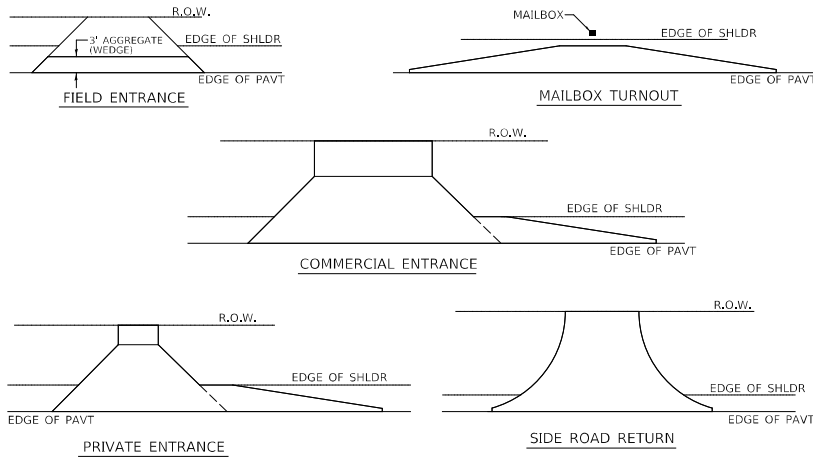
ILLINOIS FED. AID PROJECT

MODEL NUMBER: N/A
 FILE NAME: 97.4.DWG

ARORA AND ASSOCIATES, P.C.
 Consulting Engineers

USER NAME = S408RS	DESIGNED -	REVISED -
	DRAWN -	REVISED -
PLOT SCALE = SCALE: 1:2	CHECKED -	REVISED -
PLOT DATE = 12-MAY-2021 10:26	DATE -	REVISED -

HOT-MIX ASPHALT APPROACHES & MAILBOX RETURNS FOR TWO LIFT (3P) RESURFACING PROJECTS

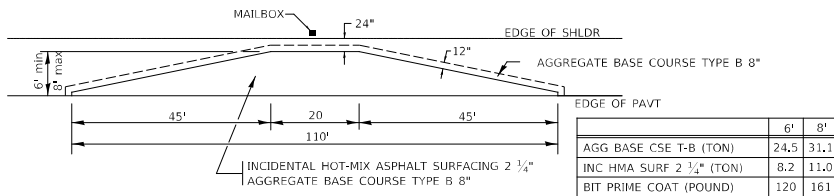


NOTE: EXISTING HMA PE's, CE's, SR's, & MB TURNOUTS
Place 2 1/4" Incidental Hot-Mix Asphalt Surfacing on entrance to conform to the existing configuration.

EXISTING AGG. PE's & CE's
Place 2 1/4" Incidental Hot-Mix Asphalt Surfacing on existing entrance to conform to the present configuration.

EXISTING AGG. SIDEROADS
Place 3" Incidental Hot-Mix Asphalt Surfacing on sideroad to conform to the present configuration.

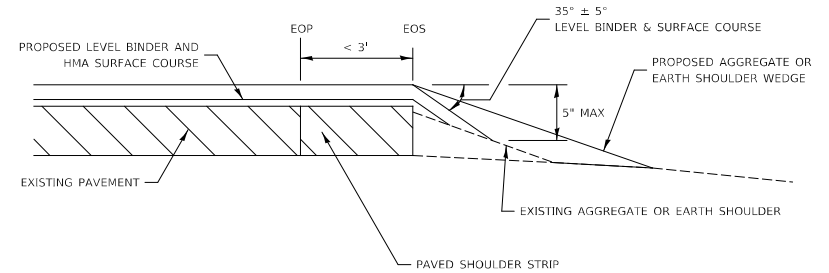
EXISTING AGG. MAILBOX TURNOUTS
Existing Agg. Mailbox Turnouts shall be constructed as shown below.



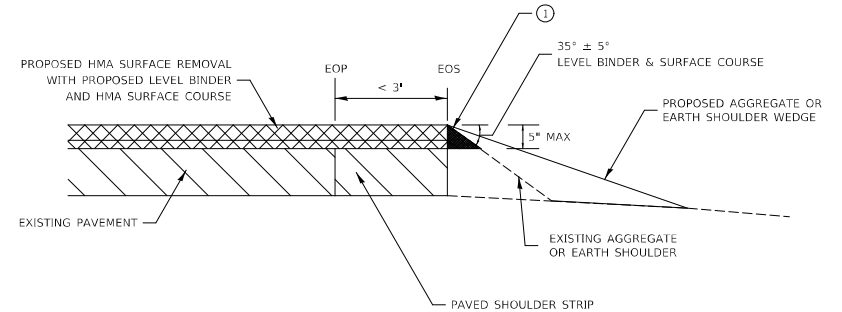
REVISED - 1-05-16
REVISED - 7-21-15
REVISED - 6-27-14
REVISED - 10-21-08

HOT-MIX ASPHALT APPROACHES & MAILBOX RETURNS FOR TWO LIFT (3P) RESURFACING PROJECTS 47.2

SAFETY EDGE (3P PROJECTS)



NO MILLING: ADJACENT SHOULDER FLUSH WITH OR LOWER THAN EXISTING PAVEMENT



MILLING: WITH ADJACENT SHOULDER FLUSH WITH OR HIGHER THAN MILLED SURFACE

NOTES: THE DEVICE WHICH FORMS THE SAFETY EDGE SHALL BE MOUNTED ON THE PAVEMENT SCREED OR AGAINST THE END GATE AND SHALL BE REMOVABLE OR BE ABLE TO BE LIFTED WHEN NOT IN USE. THE DEVICE SHALL BE DESIGNED TO MAINTAIN CONTACT WITH SURFACE OF THE SHOULDER AND ALLOW AUTOMATIC TRANSITION TO CROSS ROADS, DRIVEWAYS AND OBSTRUCTIONS. THE DEVICE SHALL ALSO CONSTRAIN THE HMA MATERIAL AND INCREASE THE CONSOLIDATION OF THE EXTRUDED PROFILE. THE USE OF A CONVENTIONAL SINGLE PLATE STRIKE-OFF WILL NOT BE ALLOWED.

ROLLERS WILL NOT BE ALLOWED ON THE SLOPED FACE OF THE SAFETY EDGE.

① PRIOR TO THE PLACEMENT OF THE HMA SAFETY EDGE, IF THE ADJACENT AGGREGATE OR EARTH SHOULDER IS HIGHER THAN THE MILLED SURFACE, THE AREA REQUIRED FOR PLACEMENT OF THE SAFETY EDGE SHALL BE BROUGHT FLUSH WITH THE MILLED SURFACE IN A MANNER APPROVED BY THE ENGINEER. THIS WORK SHALL BE CONSIDERED INCLUDED IN THE CONTRACT UNIT PRICE PER TON FOR HOT-MIX ASPHALT SURFACE COURSE OF THE TYPE SPECIFIED.

REVISED - 1-05-16
REVISED - 10-11-13

SAFETY EDGE (3P PROJECTS) 49.2

MODEL NUMBER: 0404
FILE NAME: 47.2.DWG

ARORA AND ASSOCIATES, P.C.
Consulting Engineers

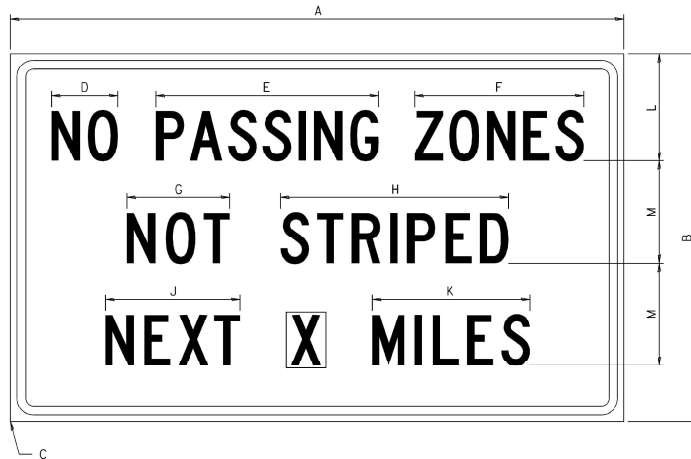
USER NAME = SRSERS	DESIGNED -	REVISED -
PLOT SCALE = SCALE: 1:2	DRAWN -	REVISED -
PLOT DATE = 12-MAY-2021 10:26	CHECKED -	REVISED -
	DATE -	REVISED -

STATE OF ILLINOIS
DEPARTMENT OF TRANSPORTATION

DETAIL		F.A.P. SITE	SECTION	COUNTY	TOTAL SHEETS	SHEET NO.
REGION 2 / DISTRICT 2 STANDARD: 47.2 & 49.2		308	1094S-2	WHITESIDE	39	32
SCALE: NTS		SHEET 1 OF 1 SHEETS		STA.	TO STA.	
					ILLINOIS	FED. AID PROJECT

WORK ZONE SIGN DETAILS

ILLINOIS STANDARD G20-1100



COLOR LEGEND AND BORDER BACKGROUND BLACK ORANGE NON-REFLECTORIZED REFLECTORIZED

SIGN SIZE	DIMENSIONS											
	A	B	C	D	E	F	G	H	J	K	L	M
60 x 36	60.00	36.00	2.25	6.4	21.80	16.40	10.00	22.40	13.20	15.50	10.50	10.00

SIGN SIZE	SERIES BY LINE			MARGIN	BORDER
	1	2	3		
60 x 36	5C	5C	5C	0.625	0.875

Sign not to scale

GENERAL NOTES

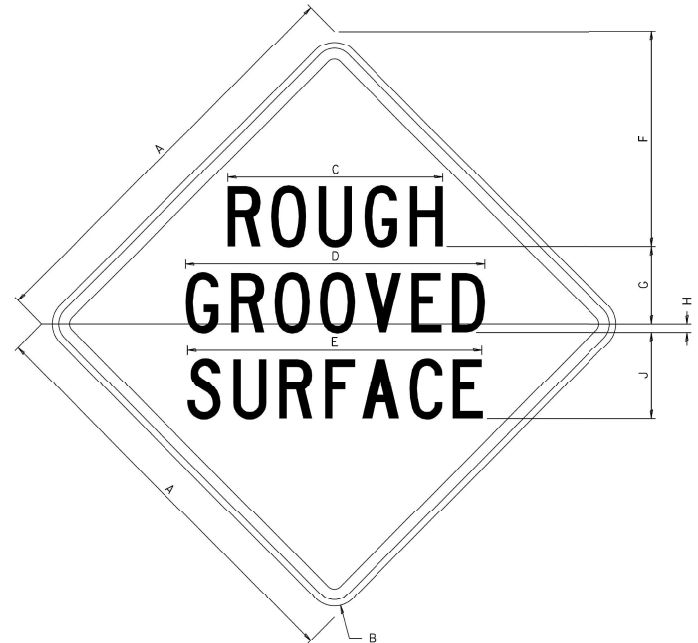
All work to furnish and install these signs shall be included in the cost of the specified traffic control standards and shall not be paid separately.

All Illinois Standard signs shall conform to the latest edition of the "Illinois Standard Highway Signs Book" in effect on the date of invitation for bids.

Signs shall meet the applicable portions of Sections 701 and 720 of the Standard Specifications.

All dimensions are in inches unless otherwise noted.

ILLINOIS STANDARD W8-1107



COLOR LEGEND AND BORDER BACKGROUND BLACK ORANGE NON-REFLECTORIZED REFLECTORIZED

SIGN SIZE	DIMENSIONS								
	A	B	C	D	E	F	G	H	J
48 x 48	48.00	3.00	25.00	34.80	34.20	24.94	9.00	1.00	10.00

SIGN SIZE	SERIES BY LINE			MARGIN	BORDER
	1	2	3		
48 x 48	7C	7C	7C	1.250	0.750

Sign not to scale

MODEL NUMBER/NAME FILE NAME: ILLS

ARORA AND ASSOCIATES, P.C.
Consulting Engineers

USER NAME = SRS	DESIGNED -	REVISED -
PLOT SCALE = SCALE: 1/2	DRAWN -	REVISED -
PLOT DATE = 12-MAY-2021 10:26	CHECKED -	REVISED -
	DATE -	REVISED -

STATE OF ILLINOIS
DEPARTMENT OF TRANSPORTATION

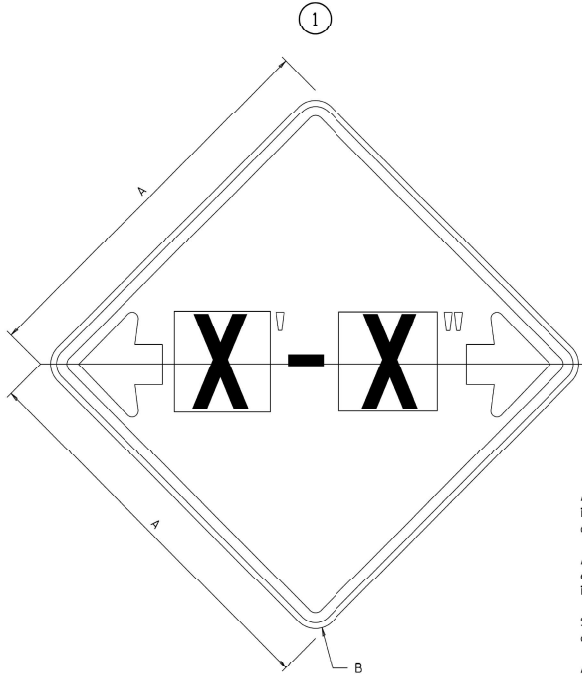
WORKZONE SIGN DETAIL
REGION 2 / DISTRICT 2 STANDARD: 34.1

SCALE: NTS SHEET 1 OF 4 SHEETS STA. TO STA.

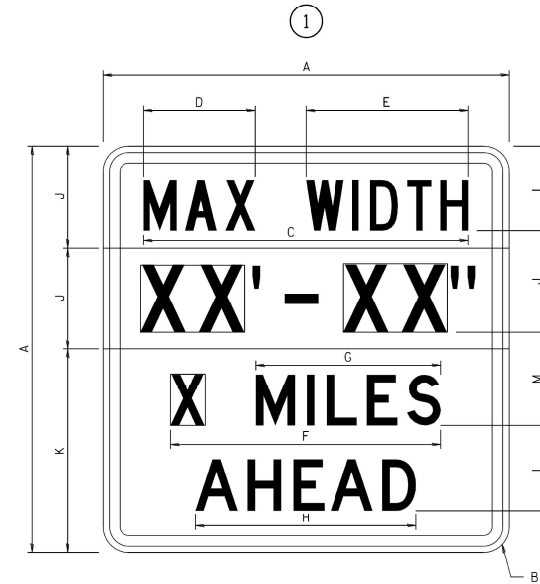
F.A.P. SITE = 308	SECTION = 10945-2	COUNTY = WHITESIDE	TOTAL SHEETS = 39	SHEET NO. = 33
			CONTRACT NO. 64M90	
			ILLINOIS FED. AID PROJECT	

WORK ZONE SIGN DETAILS

ILLINOIS STANDARD W12-I102



ILLINOIS STANDARD W12-I103



GENERAL NOTES

All work to furnish and install these signs shall be included in the cost of the specified traffic control standards and shall not be paid separately.

All Illinois Standard signs shall conform to the latest edition of the "Illinois Standard Highway Signs Book" in effect on the date of invitation for bids.

Signs shall meet the applicable portions of Sections 701 and 720 of the Standard Specifications.

All dimensions are in inches unless otherwise noted.

COLOR LEGEND AND BORDER BACKGROUND BLACK FL ORANGE NON-REFLECTORIZED REFLECTORIZED

SIGN SIZE	DIMENSIONS	
	A	B
48 x 48	48.00	3.00

① Illinois Standard signs W12-I102 and W12-I103 shall be used as described in the special provisions.

SIGN SIZE	SERIES BY LINE	MARGIN	BORDER
	1		
48 x 48	12C	0.750	1.250

Sign not to scale

COLOR LEGEND AND BORDER BACKGROUND (WIDTH) BLACK WHITE FL ORANGE NON-REFLECTORIZED REFLECTORIZED

SIGN SIZE	DIMENSIONS											
	A	B	C	D	E	F	G	H	J	K	L	M
48 x 48	48.00	3.00	38.40	13.20	19.20	32.00	22.00	26.20	12.00	24.00	10.00	11.00

SIGN SIZE	SERIES BY LINE				MARGIN	BORDER
	1	2	3	4		
48 x 48	6C	8D	6D	6D	0.750	1.250

Sign not to scale

XX'-XX" WIDTH AND X MILES ARE VARIABLE TOP AND BOTTOM OF BACKGROUND WHITE

MODEL NUMBER/NAME FILE NAME: I102

ARORA AND ASSOCIATES, P.C.
Consulting Engineers

USER NAME = SRSERS	DESIGNED -	REVISED -
PLOT SCALE = SCALE: 1:2	DRAWN -	REVISED -
PLOT DATE = 12-MAY-2021 10:27	CHECKED -	REVISED -
	DATE -	REVISED -

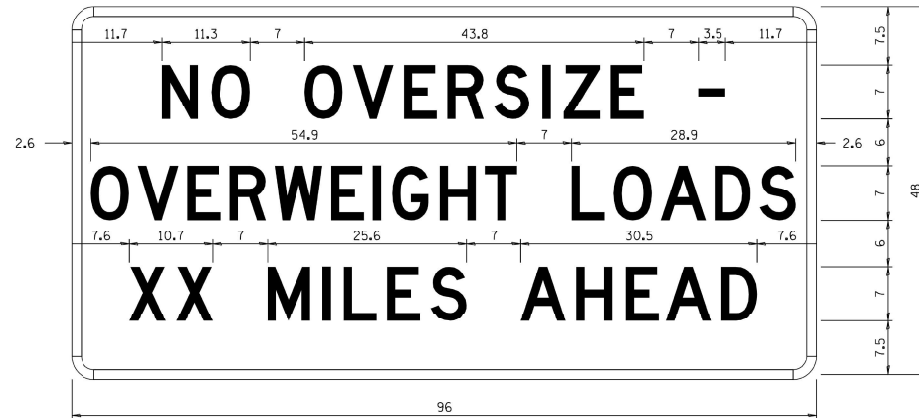
STATE OF ILLINOIS
DEPARTMENT OF TRANSPORTATION

WORKZONE SIGN DETAIL		F.A.P. SITE	SECTION	COUNTY	TOTAL SHEETS
REGION 2 / DISTRICT 2 STANDARD: 34.1		308	10945-2	WHITESIDE	39 34
SCALE: NTS		SHEET 2 OF 4 SHEETS		STA.	TO STA.
		ILLINOIS		FED. AID PROJECT	

CONTRACT NO. 64M90

WORK ZONE SIGN DETAILS

ROAD CLOSED TO OVERSIZED LOADS



STOP LINE SIGN FOR TEMPORARY SIGNALS



COLOR LEGEND AND BORDER BACKGROUND BLACK ORANGE NON-REFLECTORIZED REFLECTORIZED

Permit Loads - Loads Over 13 Feet; 3.0" Radius, 1.3" Border;
 [NO OVERSIZE -] D; [OVERWEIGHT LOADS] D 85% spacing; [XX MILES AHEAD] D;
 Table of letter and object lefts.

N	O	O	V	E	R	S	I	Z	E	-
11.7	18.1	30.0	36.2	42.8	48.4	54.4	60.7	63.5	69.5	80.8

O	V	E	R	W	E	I	G	H	T	L	O	A	D	S
2.6	8.6	15.0	20.4	26.2	33.4	38.8	41.3	47.4	53.2	64.5	69.9	75.9	82.9	88.7

X	X	M	I	L	E	S	A	H	E	A	D
7.6	13.6	25.3	32.3	35.1	40.6	46.2	57.9	65.1	71.4	76.6	83.7

Sign not to scale

COLOR LEGEND AND BORDER BACKGROUND BLACK WHITE NON-REFLECTORIZED REFLECTORIZED

SIGN SIZE	SERIES BY LINE		
	1	2	3
24 x 24	4C	4C	4C

Sign not to scale

GENERAL NOTES

All work to furnish and install these signs shall be included in the cost of the specified traffic control standards and shall not be paid separately.

All Illinois Standard signs shall conform to the latest edition of the "Illinois Standard Highway Signs Book" in effect on the date of invitation for bids.

Signs shall meet the applicable portions of Sections 701 and 720 of the Standard Specifications.

All dimensions are in inches unless otherwise noted.

MODEL NUMBER/NAME
FILE NAME: ILLD05

ARORA AND ASSOCIATES, P.C.
Consulting Engineers

USER NAME = S408RS	DESIGNED -	REVISED -
	DRAWN -	REVISED -
PLOT SCALE = SCALE: 1:12	CHECKED -	REVISED -
PLOT DATE = 12-MAY-2021 10:28	DATE -	REVISED -

STATE OF ILLINOIS
DEPARTMENT OF TRANSPORTATION

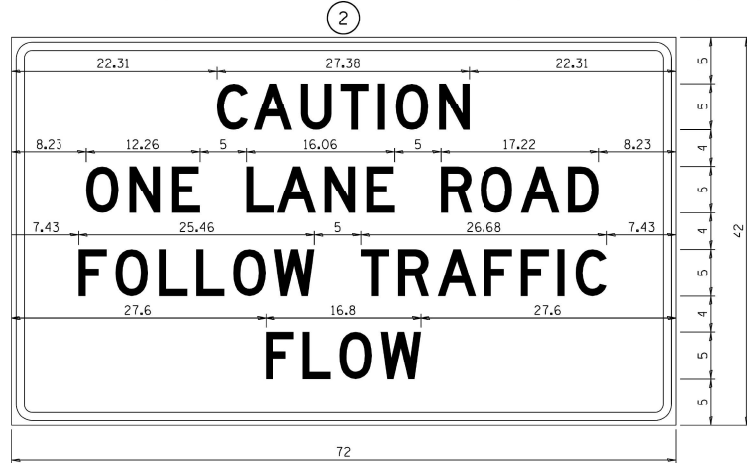
WORKZONE SIGN DETAIL
REGION 2 / DISTRICT 2 STANDARD: 34.1

SCALE: NTS SHEET 3 OF 4 SHEETS STA. TO STA.

F.A.P. SITE	SECTION	COUNTY	TOTAL SHEETS	SHEET NO.
308	1094S-2	WHITESIDE	39	35
CONTRACT NO. 64M90				
ILLINOIS FED. AID PROJECT				

**ENTRANCE SIGN FOR USE
WITH TEMPORARY SIGNALS**

WORK ZONE SIGN DETAILS



COLOR LEGEND AND BORDER BACKGROUND BLACK ORANGE NON-REFLECTORIZED REFLECTORIZED

2.25" Radius, 0.88" Border, 0.50" Indent;
[CAUTION] D; [ONE LANE ROAD] D;
[FOLLOW TRAFFIC] D; [FLOW] D

② This sign shall be installed at entrances located between the temporary signals as shown in the staging plans.

Table Of Widths And Spaces

22.31	C	3.36	0.62	A	4.18	0.94	U	3.36	0.94	T	3.04	0.94	I	0.78	1.17	O	3.52	1.17	N	3.36	22.31
-------	---	------	------	---	------	------	---	------	------	---	------	------	---	------	------	---	------	------	---	------	-------

8.23	O	3.51	1.17	N	3.36	1.18	E	3.04
------	---	------	------	---	------	------	---	------

5.00	L	3.05	0.31	A	4.18	0.94	N	3.36	1.17	E	3.05
------	---	------	------	---	------	------	---	------	------	---	------

5.00	R	3.36	0.93	O	3.52	0.94	A	4.18	0.93	D	3.36	8.23
------	---	------	------	---	------	------	---	------	------	---	------	------

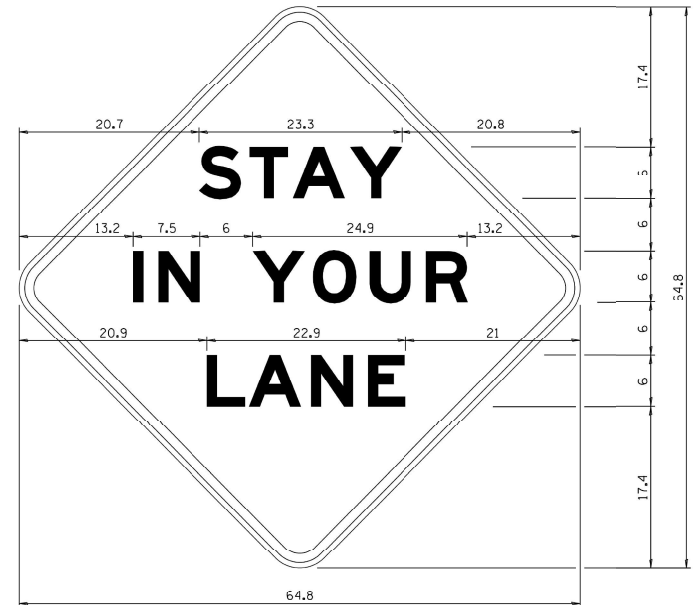
7.43	F	3.04	0.94	O	3.52	1.17	L	3.04	0.94	L	3.05	0.94	O	3.51	0.94	W	4.37
------	---	------	------	---	------	------	---	------	------	---	------	------	---	------	------	---	------

5.00	T	3.05	0.94	R	3.36	0.94	A	4.18	0.93	F	3.05	0.94	F	3.04	0.94	I	0.78	1.18	C	3.35	7.43
------	---	------	------	---	------	------	---	------	------	---	------	------	---	------	------	---	------	------	---	------	------

27.60	F	3.05	0.94	L	3.04	0.94	O	3.52	0.93	W	4.38	27.60
-------	---	------	------	---	------	------	---	------	------	---	------	-------

Sign not to scale

STAY IN YOUR LANE



COLOR LEGEND AND BORDER BACKGROUND BLACK ORANGE NON-REFLECTORIZED REFLECTORIZED

48.0" across sides 3.8" Radius, 1.0" Border, C.6" Indent;
"STAY" E Mod; "IN YOUR" E Mod; "LANE" E Mod;

Table of Letter and Object Lefts

S	T	A	Y
20.7	26.8	31.6	38.0

I	N	Y	O	U	R
13.2	15.9	26.7	33.9	40.5	46.8

L	A	N	E
20.9	25.8	33.1	39.4

Sign not to scale

GENERAL NOTES

All work to furnish and install these signs shall be included in the cost of the specified traffic control standards and shall not be paid separately.

All Illinois Standard signs shall conform to the latest edition of the "Illinois Standard Highway Signs Book" in effect on the date of invitation for bids.

Signs shall meet the applicable portions of Sections 701 and 720 of the Standard Specifications.

All dimensions are in inches unless otherwise noted.

MODEL NUMBER/NAME
FILE NAME: ILLS

ARORA AND ASSOCIATES, P.C.
Consulting Engineers

USER NAME = S489RS	DESIGNED -	REVISED -
	DRAWN -	REVISED -
PLOT SCALE = SCALE: 1:12	CHECKED -	REVISED -
PLOT DATE = 12-MAY-2021 10:29	DATE -	REVISED -

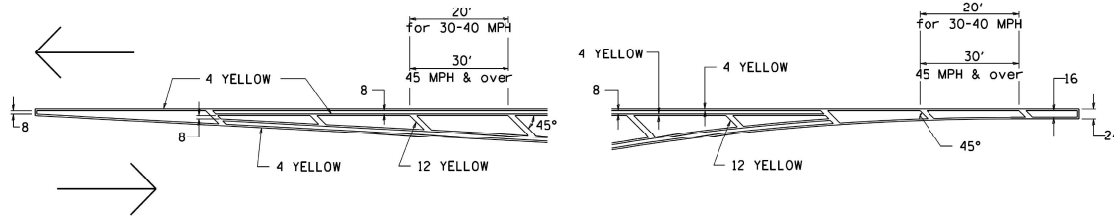
STATE OF ILLINOIS
DEPARTMENT OF TRANSPORTATION

WORKZONE SIGN DETAIL			
REGION 2 / DISTRICT 2 STANDARD: 34.1			
SCALE: NTS	SHEET 4	OF 4 SHEETS	STA. TO STA.

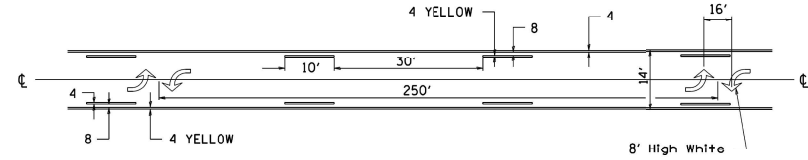
F.A.P. SITE	SECTION	COUNTY	TOTAL SHEETS	SHEET NO.
308	1094S-2	WHITESIDE	39	36
CONTRACT NO. 64M90				
ILLINOIS FED. AID PROJECT				

TYPICAL PAVEMENT MARKINGS

TYPICAL PAVEMENT MARKING FOR FLUSH MEDIAN AT LEFT TURN LANE

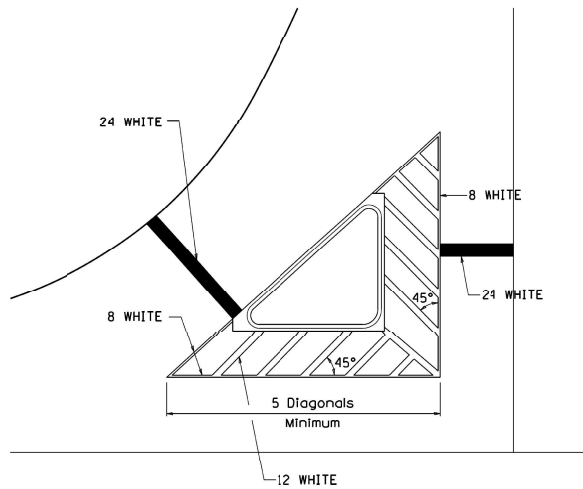


MEDIAN PAVEMENT MARKING



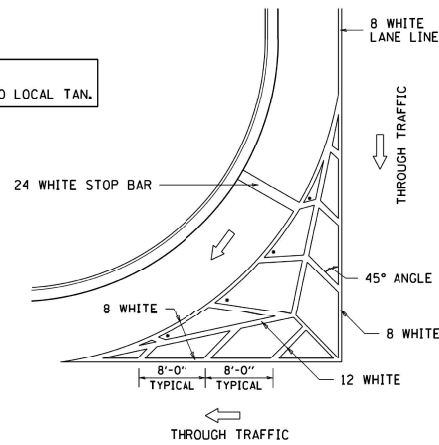
•• ALL DIMENSIONS ARE IN INCHES UNLESS OTHERWISE NOTED.

TYPICAL ISLAND OFFSET SHOULDER WIDTH



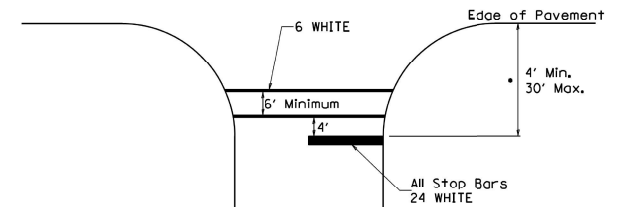
TYPICAL MARKING FOR PAINTED ISLANDS

NOTE:
* 45° TO LOCAL TAN.



STANDARD CROSSWALK MARKING

See Schedules for Locations



• Distance to the nearest edge of the intersecting roadway in the absence of a marked crosswalk.

MODEL NUMBER: 64104
FILE NAME: 64104.DWG

ARORA AND ASSOCIATES, P.C.
Consulting Engineers

USER NAME = sksbrs	DESIGNED -	REVISED -
PLOT SCALE = SCALE: 1/2	DRAWN -	REVISED -
PLOT DATE = 12-MAY-2021 10:29	CHECKED -	REVISED -
	DATE -	REVISED -

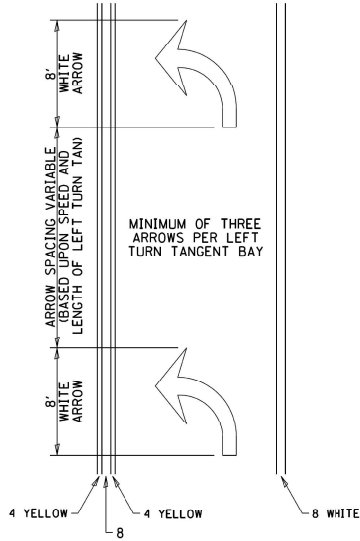
STATE OF ILLINOIS
DEPARTMENT OF TRANSPORTATION

TYPICAL PAVEMENT MARKINGS
REGION 2 / DISTRICT 2 STANDARD: 41.1

SCALE: NTS	SHEET 1	OF 3	SHEETS	STA.	TO STA.	F.A.P. SITE: 308	SECTION: 109RS-2	COUNTY: WHITESIDE	TOTAL SHEETS: 39	SHEET NO.: 37
									CONTRACT NO. 64M90	
									ILLINOIS FED. AID PROJECT	

TYPICAL PAVEMENT MARKINGS

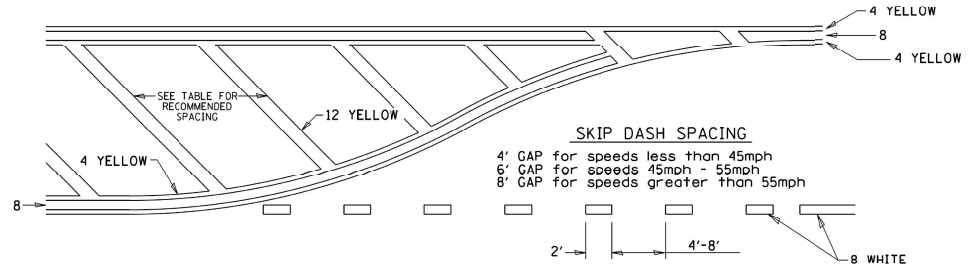
ARROW LAYOUT



- ◁ ONE-WAY AMBER MARKER
- ◁ ONE-WAY CRYSTAL MARKER
- ◇ TWO-WAY AMBER MARKER

ALL DIMENSIONS ARE IN INCHES UNLESS OTHERWISE NOTED.

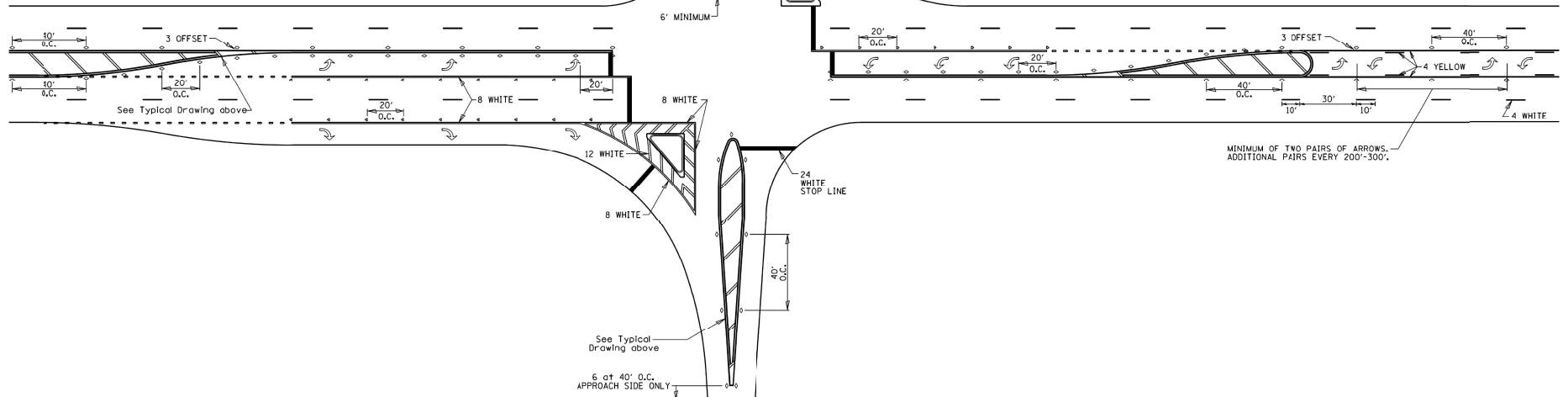
TYPICAL PAVEMENT MARKING FOR FLUSH MEDIAN



RECOMMENDED SPACING BETWEEN DIAGONALS (IN FEET)

Speed Limit Range	Continuous Median Area	Intersection Channelization	Objects (Islands)
less than 30MPH	50'	15'	10'
30-40MPH	75'	20'	15'
45MPH & over	75'	30'	20'

NOTE: if the spacing recommended in the Table does not permit at least five diagonal lines in the area being marked, the spacing from the next lowest speed range should be used. The recommended spacing is measured parallel to the pavement center line.



MODEL NUMBER: 64M90
FILE NAME: 64M90.DWG

ARORA AND ASSOCIATES, P.C.
Consulting Engineers

USER NAME = S428RS	DESIGNED -	REVISED -
PLOT SCALE = SCALE: 1/2	DRAWN -	REVISED -
PLOT DATE = 12-MAY-2021 10:30	CHECKED -	REVISED -
	DATE -	REVISED -

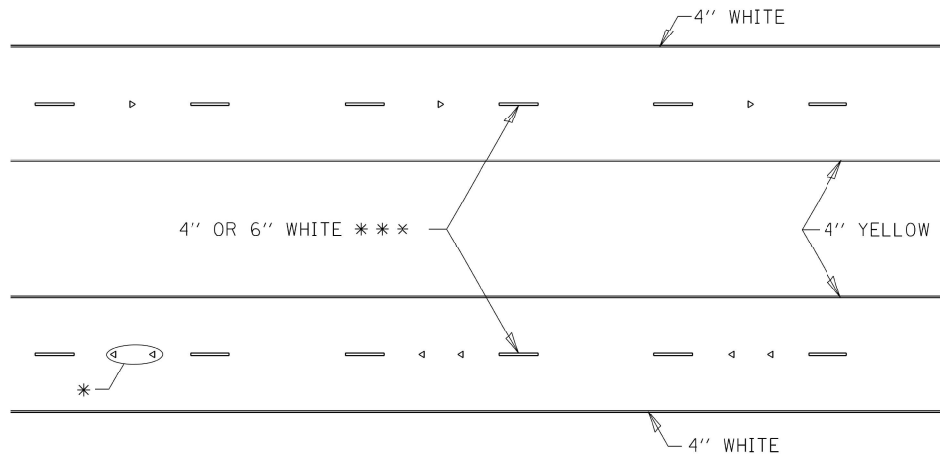
STATE OF ILLINOIS
DEPARTMENT OF TRANSPORTATION

TYPICAL PAVEMENT MARKINGS
REGION 2 /DISTRICT 2 STANDARD: 41.1

SCALE: NTS SHEET 2 OF 3 SHEETS STA. TO STA.

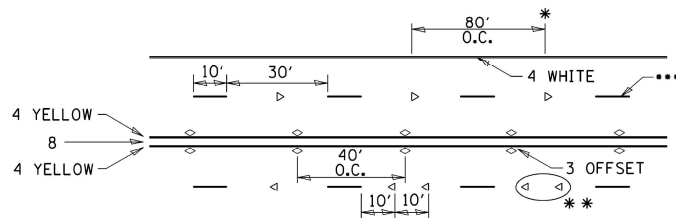
F.A.P. SITE = 308	SECTION = 109RS-2	COUNTY = WHITESIDE	TOTAL SHEETS = 39	SHEET NO. = 38
CONTRACT NO. 64M90			ILLINOIS FED. AID PROJECT	

TYPICAL PAVEMENT MARKINGS



* SEE HIGHWAY STANDARD 781001 FOR SPACING DETAILS.
USE DOUBLE MARKERS WHEN ADT > 20,000.

MULTI-LANE / DIVIDED



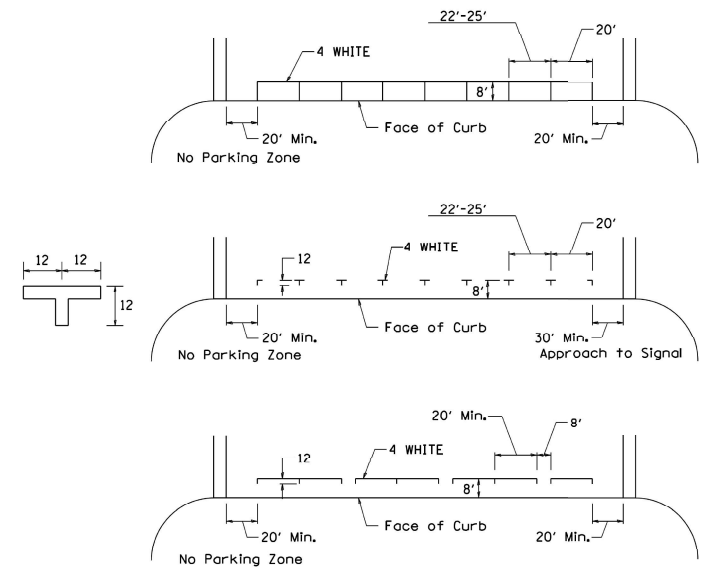
SYMBOLS

- REDUCE TO 40' O.C. ON CURVES WHERE ADVISORY SPEEDS ARE 10 MPH LOWER THAN POSTED SPEEDS.
- USE DOUBLE MARKERS WHEN ADT > 20,000
- CENTERLINE SKIP DASH PAVEMENT MARKING SPEED LIMIT LESS THAN 40 MPH USE 4' LINE. SPEED LIMIT 40 MPH AND OVER USE 6' LINE.

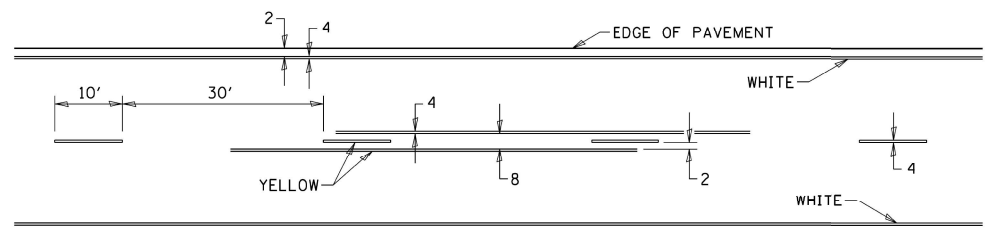
MULTI-LANE / UNDIVIDED & ONE WAY

(FOR MULTI-LANE UNDIVIDED HIGHWAYS USE THIS
DETAIL NOT HIGHWAY STANDARD 781001)

TYPICAL PARKING SPACING



TYPICAL PAVEMENT MARKING FOR TWO LANE SECTION - NO PASSING ZONES



MODEL NUMBER: 04/04
FILE NAME: 11/05

ARORA AND ASSOCIATES, P.C.
Consulting Engineers

USER NAME = sks/RS	DESIGNED -	REVISED -
	DRAWN -	REVISED -
PLOT SCALE = SCALE: 1/2	CHECKED -	REVISED -
PLOT DATE = 12-MAY-2021 10:31	DATE -	REVISED -

STATE OF ILLINOIS
DEPARTMENT OF TRANSPORTATION

TYPICAL PAVEMENT MARKINGS
REGION 2 / DISTRICT 2 STANDARD: 41.1

SCALE: NTS SHEET 3 OF 3 SHEETS STA. TO STA.

F.A.P. SITE	SECTION	COUNTY	TOTAL SHEETS	SHEET NO.
308	1094S-2	WHITESIDE	39	39
CONTRACT NO. 64M90			ILLINOIS FED. AID PROJECT	