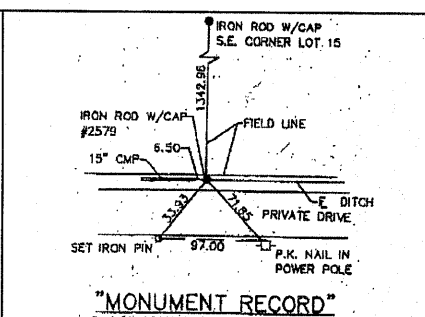
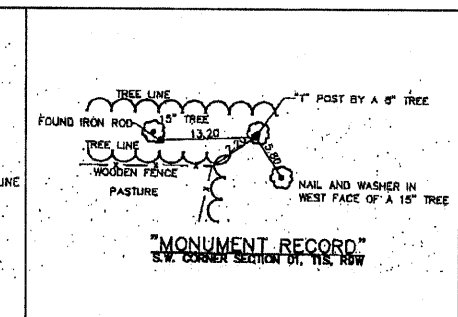
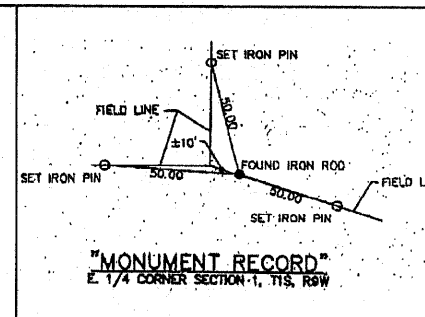
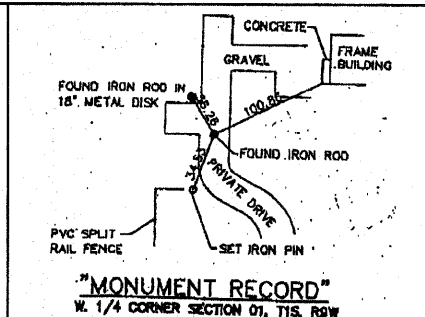
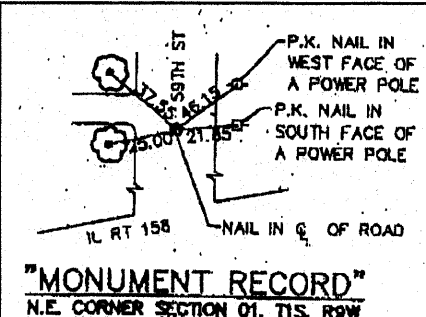
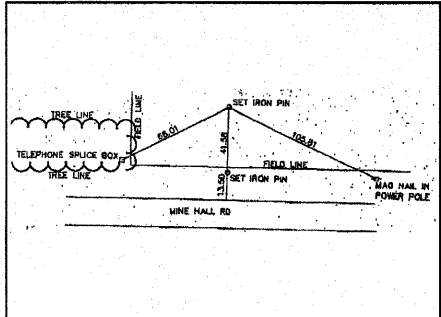


FAP NO.	SECTION	COUNTY	TOTAL SHEETS	SHEET NO.
809	133,134 RS-5, 135 RS-6	MONROE / ST. CLAIR	767	234
STA. TO STA.		CONTRACT NO.: 76408 & 76A47		
		R-98-008-03		



N 1/4 COR SEC 1, T.1 S., R.9 W.
1/18/02 MONUMENT RECORD DOC. NO. A01658099
N=661737.9188, E=2331512.8618

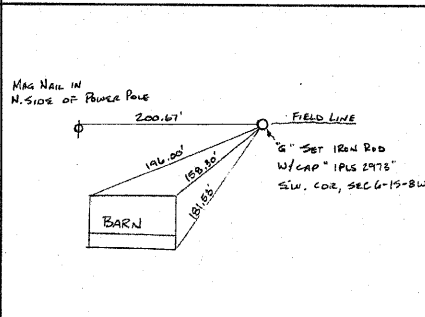
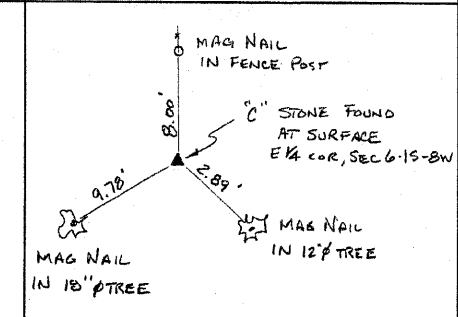
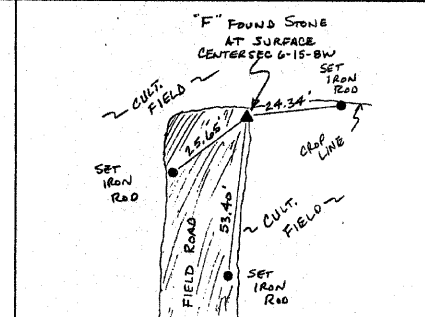
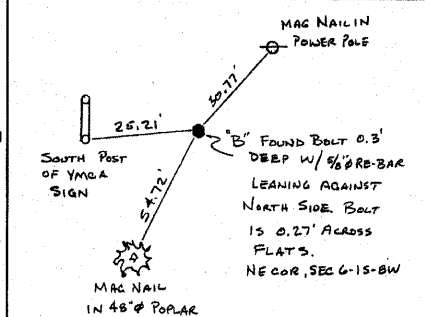
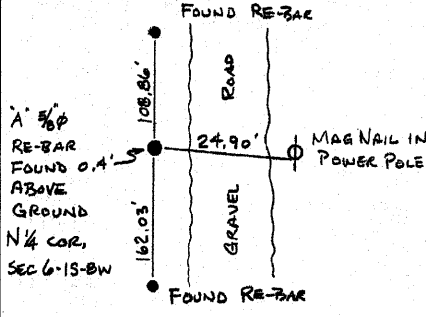
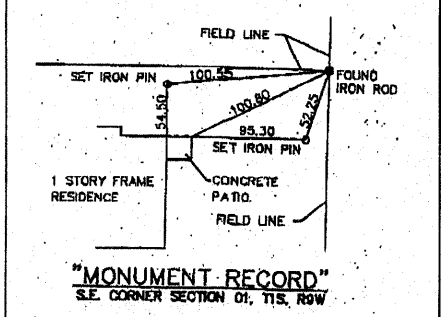
NE COR SEC 1, T.1 S., R.9 W.
1/18/02 MONUMENT RECORD DOC. NO. A01658099
N=661709.6780, E=2334090.3085

W 1/4 COR SEC 1, T.1 S., R.9 W.
1/18/02 MONUMENT RECORD DOC. NO. A01658099
N=658963.6595, E=2328925.0712

E 1/4 COR SEC 1, T.1 S., R.9 W.
1/18/02 MONUMENT RECORD DOC. NO. A01658101
N=659048.0322, E=2334088.7204

SW COR SEC 1, T.1 S., R.9 W.
1/18/02 MONUMENT RECORD DOC. NO. A01658101
N=656325.6993, E=2328924.4315

S 1/4 COR SEC 1, T.1 S., R.9 W.
1/18/02 MONUMENT RECORD DOC. NO. A01658101
N=656319.9415, E=2331508.3914



SE COR SEC 1, T.1 S., R.9 W.
1/18/02 MONUMENT RECORD DOC. NO. A01658099
N=656370.8175, E=2334087.1392

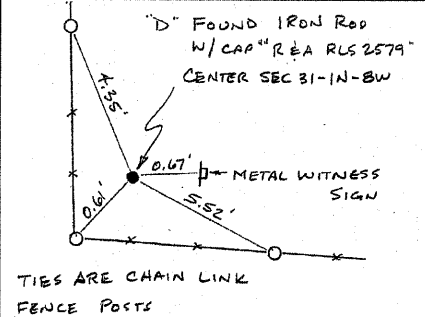
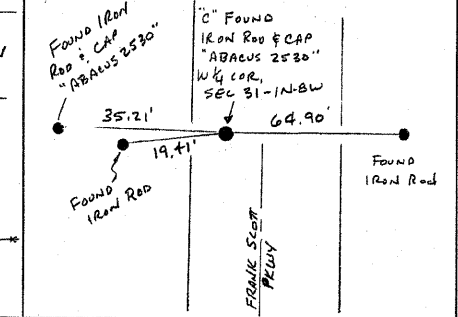
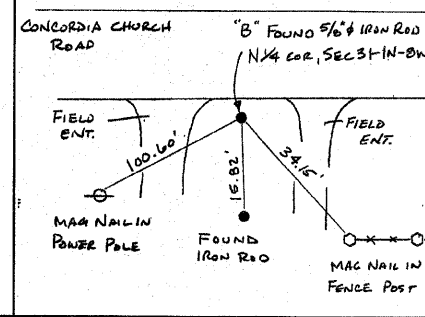
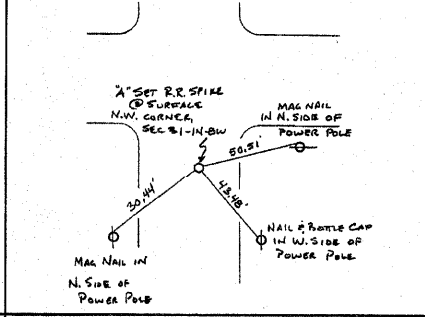
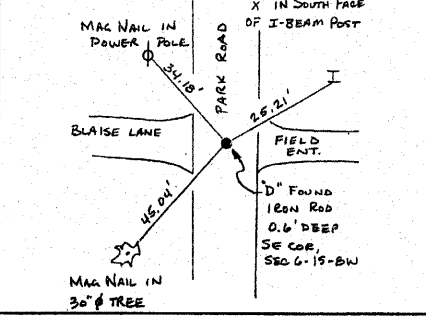
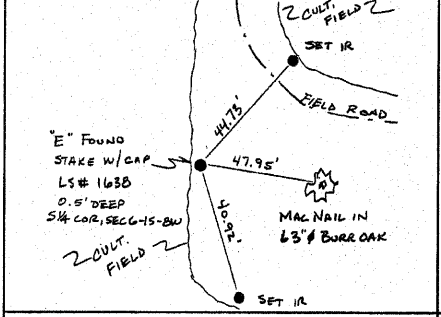
N 1/4 COR SEC 6, T.1 S., R.8 W.
1/24/05 MONUMENT RECORD DOC. NO. A01889073
N=661689.7450, E=2335928.8768

NE COR SEC 6, T.1 S., R.8 W.
1/24/05 MONUMENT RECORD DOC. NO. A01889073
N=661658.2215, E=2338814.0829

CENTER SEC 6, T.1 S., R.8 W.
1/24/05 MONUMENT RECORD DOC. NO. A01889073
N=658504.5428, E=2338817.1299

E 1/4 COR SEC 6, T.1 S., R.8 W.
1/24/05 MONUMENT RECORD DOC. NO. A01889073
N=658511.5378, E=2336196.4160

SW COR SEC 6, T.1 S., R.8 W.
1/24/05 MONUMENT RECORD DOC. NO. A01889073
N=655902.7100, E=2334086.1550



S 1/4 COR SEC 6, T.1 S., R.8 W.
1/24/05 MONUMENT RECORD DOC. NO. A01889073
N=655887.6044, E=2336191.6666

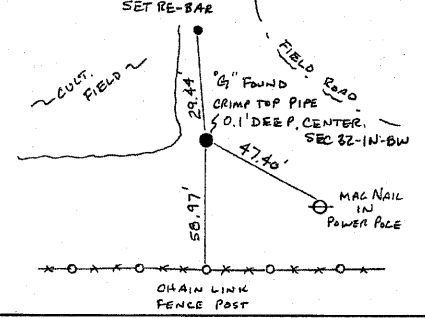
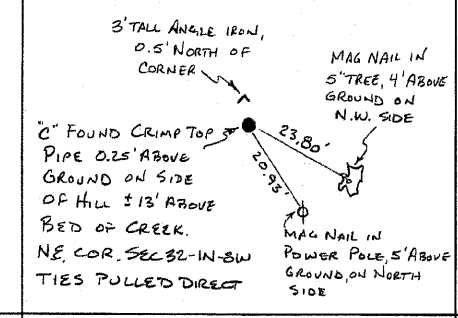
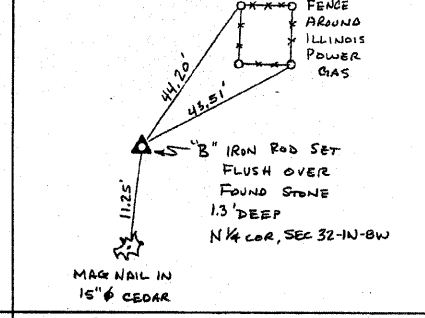
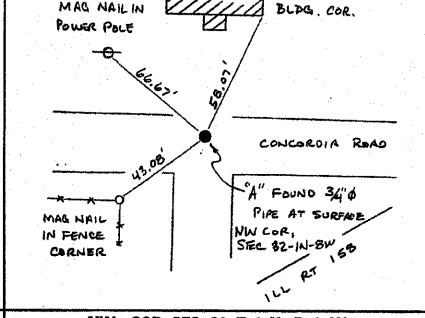
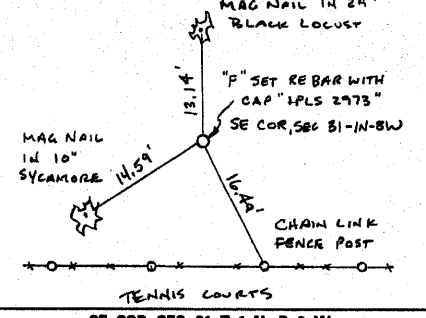
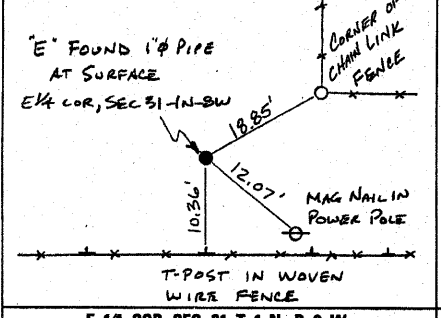
SE COR SEC 6, T.1 S., R.8 W.
1/24/05 MONUMENT RECORD DOC. NO. A01889073
N=6558843.0791, E=2338814.1179

NW COR SEC 31, T.1 N., R.8 W.
1/24/05 MONUMENT RECORD DOC. NO. A01889062
N=666995.3440, E=2334102.1230

N 1/4 COR SEC 31, T.1 N., R.8 W.
1/24/05 MONUMENT RECORD DOC. NO. A01889062
N=666967.5624, E=2335927.0410

W 1/4 COR SEC 31, T.1 N., R.8 W.
1/24/05 MONUMENT RECORD DOC. NO. A01889062
N=664359.9680, E=2334097.4710

CENTER SEC 31, T.1 N., R.8 W.
1/24/05 MONUMENT RECORD DOC. NO. A01889062
N=664350.7195, E=2335926.8661



E 1/4 COR SEC 31, T.1 N., R.8 W.
1/24/05 MONUMENT RECORD DOC. NO. A01889062
N=664310.7591, E=2338576.8591

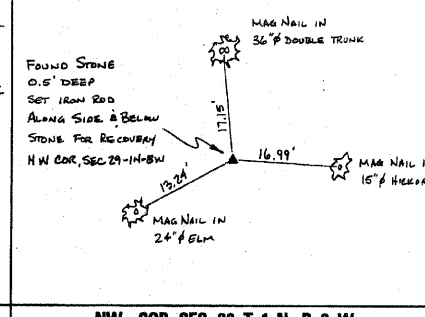
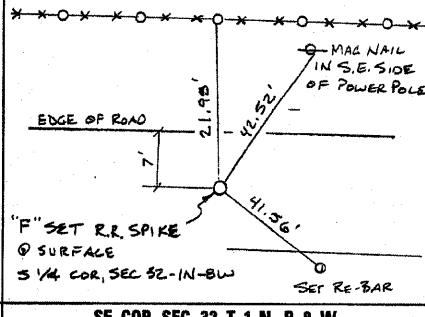
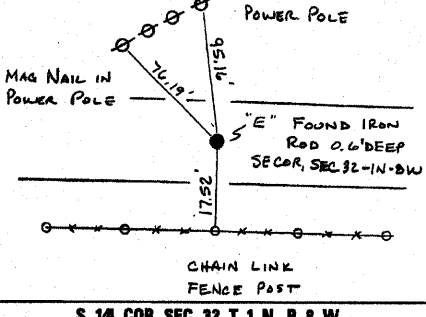
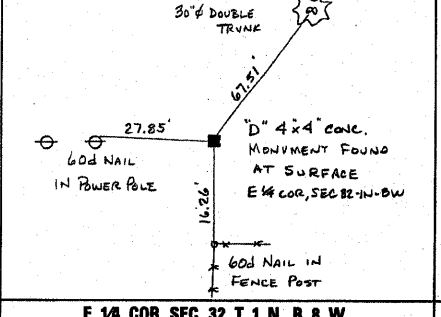
SE COR SEC 31, T.1 N., R.8 W.
1/24/05 MONUMENT RECORD DOC. NO. A01889062
N=661660.9820, E=2338549.8370

NW COR SEC 32, T.1 N., R.8 W.
1/24/05 MONUMENT RECORD DOC. NO. A01889063
N=666944.3313, E=2338598.0798

N 1/4 COR SEC 32, T.1 N., R.8 W.
1/24/05 MONUMENT RECORD DOC. NO. A01889063
N=666906.6767, E=2339903.6335

NE COR SEC 32, T.1 N., R.8 W.
1/24/05 MONUMENT RECORD DOC. NO. A01889063
N=666949.0815, E=2341241.7155

CENTER SEC 32, T.1 N., R.8 W.
1/24/05 MONUMENT RECORD DOC. NO. A01889063
N=664279.3016, E=2341221.3521



E 1/4 COR SEC 32, T.1 N., R.8 W.
1/24/05 MONUMENT RECORD DOC. NO. A01889063
N=664246.5680, E=2343881.4754

S 1/4 COR SEC 32, T.1 N., R.8 W.
1/24/05 MONUMENT RECORD DOC. NO. A01889063
N=661632.8505, E=2341297.8432

SE COR SEC 32, T.1 N., R.8 W.
1/24/05 MONUMENT RECORD DOC. NO. A01889063
N=661605.7553, E=2343834.8207

NW COR SEC 29, T.1 N., R.8 W.
11/1/04 MONUMENT RECORD DOC. NO. A01875045
N=672237.3173, E=2338597.1181

STATE OF MISSOURI)
) SS
CITY OF ST. LOUIS)

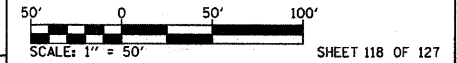
I, RONNIE D. LOWE, AN ILLINOIS PROFESSIONAL LAND SURVEYOR, CERTIFY THAT I HAVE SURVEYED THE PLAT OF HIGHWAY SHOWN HEREON AND THAT THIS PROFESSIONAL SERVICE CONFORMS TO THE CURRENT ILLINOIS MINIMUM STANDARDS FOR A BOUNDARY SURVEY FOR THE PROPOSED PARCEL(S) TO BE ACQUIRED BY THE STATE OF ILLINOIS, DEPARTMENT OF TRANSPORTATION, SHOWN HEREON.

DATED _____
RONNIE D. LOWE, PLS NO. 035-003363
LICENSE EXPIRATION DATE: 11/30/2010

COMPLETION DATE OF FIELD WORK PERFORMED
LAND SURVEY: OCTOBER 06, 2006
RIGHT OF WAY STAKING: JUNE 02, 2009

DAVID MASON & ASSOCIATES
Engineering Architecture Surveying
800 South Vandeventer Avenue
St. Louis, MO 63110
(314) 594-1030
ILLINOIS LICENCE NO: 184-000486
Expiration Date: April 30, 2011

ILLINOIS DEPARTMENT OF TRANSPORTATION
PLAT OF HIGHWAYS
FAP ROUTE 809 (IL 158)
SECTION (133,134) RS-5, 135 RS-6
MONROE AND ST. CLAIR COUNTY
JOB NO. R-98-008-03



SHEET 118 OF 127
ILLINOIS DEPARTMENT OF TRANSPORTATION
DIVISION OF HIGHWAYS/DISTRICT 8
1102 EASTPORT PLAZA DRIVE
COLLINGSVILLE, ILLINOIS 62234-6198
SHEET 1 IS A COVER SHEET

NO.	DATE	DESCRIPTION	BY

SEDATESS
DATE-TIME
COORDINATE
REF-
REF-
REF-

PLOT DATE: DATE-TIME