

STATE OF ILLINOIS  
DEPARTMENT OF TRANSPORTATION

F.A.I. RTE.	SECTION	COUNTY	TOTAL SHEETS	SHEET NO.
290	FAI 290 22 WW	DUPAGE	23	1
		ILLINOIS	CONTRACT NO. 62R64	

FOR INDEX OF SHEETS, SEE SHEET NO. 2

IMPROVEMENT IS LOCATED IN THE CITY OF ELMHURST

**TRAFFIC DATA**

2019 ADT  
I-290 (E.B. RAMP TO US-20 OVER IL-64) = 43,300

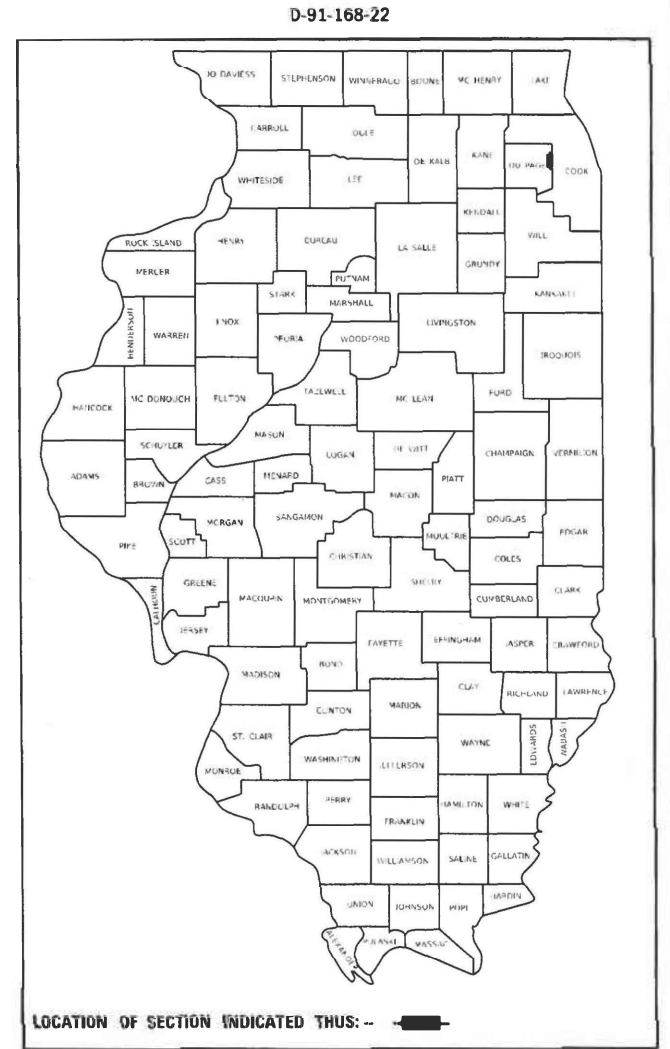
**POSTED SPEED LIMIT**

I-290 (E.B. RAMP TO US-20 OVER IL-64) = 55 MPH

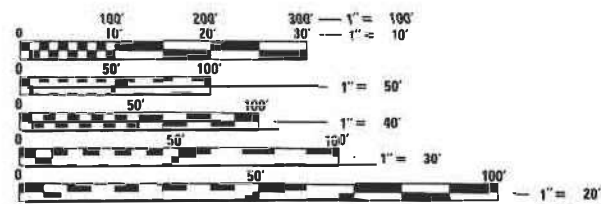
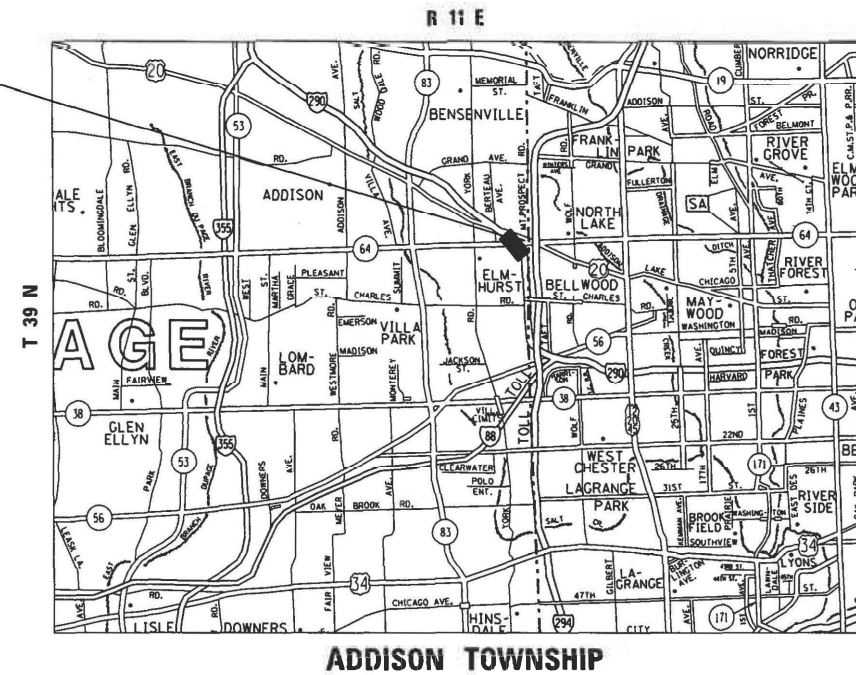
**PROPOSED  
HIGHWAY PLANS**

FAI ROUTE 290: I-290 (EISENHOWER EXPY.)  
EB RAMP TO US-20 OVER IL-64 (NORTH AVE.)  
SECTION: FAI 290 22 WW  
WING WALL REPAIR  
DUPAGE COUNTY

C-91-214-22



IMPROVEMENT LOCATION:  
FAI 290: I-290 EB RAMP  
TO US-20 OVER IL-64 (NORTH AVE.)  
STRUCTURE NO. 022-0015



STANDARD  
ENGINEERING SCALES. REDUCED SIZED PLANS WILL NOT  
CONFORM TO STANDARD SCALES. IN MAKING MEASUREMENTS  
ON REDUCED PLANS, THE ABOVE SCALES MAY BE USED.

J.U.L.I.E.  
JOINT UTILITY LOCATION INFORMATION FOR EXCAVATORS  
1-800-932-0123  
OR 811

PROJECT ENGINEER: RODRIGO LEDEZMA (847)705-4580  
PROJECT MANAGER: JEAN ALAIN MIDY (847)221-3056

CONTRACT NO. 62R64

GROSS & NET LENGTH = 230 FT. = 0.0435 MILE

STATE OF ILLINOIS  
DEPARTMENT OF TRANSPORTATION

SUBMITTED April 28 2022  
Jose Eros Lopez  
REGIONAL ENGINEER

June 10, 2022 [Signature]  
ENGINEER OF DESIGN AND ENVIRONMENT

June 10, 2022 [Signature]  
DIRECTOR OF HIGHWAYS PROJECT IMPLEMENTATION

PRINTED BY THE AUTHORITY  
OF THE STATE OF ILLINOIS

## INDEX OF SHEETS

1	COVER SHEET
2	INDEX OF SHEETS, STATE STANDARDS AND GENERAL NOTES
3-5	SUMMARY OF QUANTITIES
6	ROADWAY REPAIR PLAN
7-9	MAINTENANCE OF TRAFFIC PLAN
10-13	WING WALL REPAIR PLAN
14	PAVEMENT MARKING
15	DETAILS FOR DEPRESSED CURB & GUTTER AND SHOULDER TREATMENT AT TBT TY 1. SPL. (BD-34)
16	ENTRANCE AND EXIT RAMP CLOSURE DETAILS (TC-08)
17	TRAFFIC CONTROL DETAILS FOR FREEWAY SINGLE & MULTI-LANE WEAVE (TC-09)
18	RAISED REFLECTIVE PAVEMENT MARKERS (SNOW-PLOW RESISTANT) (TC-11)
19 & 20	MULTI-LANE FREEWAY PAVEMENT MARKINGS (TC-12)
21	TYPICAL PAVEMENT MARKINGS (TC-13)
22	TRAFFIC CONTROL DETAILS FOR FREEWAY SHOULDER CLOSURES AND PARTIAL RAMP CLOSURES (TC-17)
23	ARTERIAL ROAD INFORMATION SIGN (TC-22)

## STATE STANDARDS

STANDARD NO.	DESCRIPTION
000001-08	STANDARD SYMBOLS, ABBREVIATIONS AND PATTERNS
442201-03	CLASS C & D PATCHES
606001-08	CONCRETE CURB TYPE B AND COMBINATION CONCRETE CURB AND GUTTER
610001-09	SHOULDER INLET WITH CURB
630001-12	STEEL PLATE BEAM GUARDRAIL
631033-08	TRAFFIC BARRIER TERMINAL, TYPE 6B
701011-04	OFF-RD MOVING OPERATION 2L, 2W, DAY ONLY
701101-05	OFF-ROAD OPERATIONS, MULTILANE, 15' TO 24" FROM PAVEMENT EDGE
701400-11	APPROACH TO LANE CLOSURE, FREEWAY/EXPRESSWAY
701401-13	LANE CLOSURE, FREEWAY/EXPRESSWAY
701411-09	LANE CLOSURE, MULTILANE, AT ENTRANCE OR EXIT RAMP FOR SPEEDS > 45MPH
701422-10	LANE CLOSURE, MULTILANE, FOR SPEEDS 45 MPH TO 55 MPH
701428-01	TRAFFIC CONTROL SETUP AND REMOVAL FREEWAY/EXPRESSWAY
701456-05	PARTIAL EXIT RAMP CLOSURE FREEWAY/EXPRESSWAY
701901-08	TRAFFIC CONTROL DEVICES
704001-08	TEMPORARY CONCRETE BARRIER
782006-01	GUARDRAIL AND BARRIER WALL REFLECTOR MOUNTING DETAILS

## GENERAL NOTES

1. BEFORE STARTING ANY EXCAVATION, THE CONTRACTOR SHALL CALL "J.U.L.I.E." AT (800) 892-0123 OR 811 FOR FIELD LOCATIONS OF BURIED ELECTRIC, TELEPHONE AND GAS UTILITIES. 48 HOUR NOTIFICATION IS REQUIRED.
2. THE CONTRACTOR SHALL COORDINATE CONSTRUCTION ACTIVITIES WITH UTILITY COMPANIES, CITY OF ELMHURST.
3. PLAN DIMENSIONS AND DETAILS RELATIVE TO EXISTING PLANS ARE SUBJECT TO NOMINAL CONSTRUCTION VARIATIONS. THE CONTRACTOR SHALL FIELD VERIFY EXISTING DIMENSIONS AND DETAILS AFFECTING NEW CONSTRUCTION AND MAKE NECESSARY APPROVED ADJUSTMENTS PRIOR TO CONSTRUCTION OR ORDERING OF MATERIALS. SUCH VARIATIONS SHALL NOT BE CAUSE FOR ADDITIONAL COMPENSATION FOR A CHANGE IN SCOPE OF THE WORK, HOWEVER, THE CONTRACTOR WILL BE PAID FOR THE QUANTITY ACTUALLY FURNISHED BASED AT THE UNIT PRICE BID FOR THE WORK.
4. THE CONTRACTOR WILL NOT BE ALLOWED TO SET UP A YARD OR FIELD OFFICE ON STATE PROPERTY WITHOUT WRITTEN PERMISSION FROM THE DEPARTMENT.
5. ALL DAMAGE TO EXISTING PAVEMENT MARKINGS OR RAISED REFLECTIVE PAVEMENT MARKERS SHOWN ON THE PLANS SHALL BE REPLACED AT NO ADDITIONAL COST TO THE DEPARTMENT.
6. THE CONTRACTOR SHALL CONTACT THE DISTRICT ONE TRAFFIC CONTROL SUPERVISOR AT (847)705-4151 FOR EXPRESSWAYS A MINIMUM OF 72 HOURS IN ADVANCE OF BEGINNING WORK.
7. THESE PLANS HAVE BEEN PREPARED FROM NOTES RECEIVED FROM THE BUREAU OF MAINTENANCE BRIDGE INSPECTORS.
8. IT SHALL BE THE CONTRACTOR'S RESPONSIBILITY TO PROTECT AND MAINTAIN THE EXISTING BRIDGE LIGHTING AT ANY LOCATIONS THAT LIGHTING IS ENCOUNTERED ADJACENT TO AN AREA TO BE CLEANED AND PAINTED.
9. WHEN ARTIFICIAL LIGHTING IS UTILIZED IN NIGHTTIME OPERATIONS, THE CONTRACTOR SHALL EXERCISE THE OUTMOST PRECAUTIONS PREVENTING ADVERSE VISIBILITY TO THE MOTORING PUBLIC AND ADJACENT RESIDENTIAL AREAS.
10. THE CONTRACTOR SHALL REQUEST AND GAIN THE APPROVAL FROM THE ILLINOIS DEPARTMENT OF TRANSPORTATION'S EXPRESSWAY TRAFFIC OPERATIONS ENGINEER AT WWW.IDOTLCS.COM TWENTY FOUR (24) HOURS IN ADVANCE OF ALL DAILY LANE, RAMP AND SHOULDER CLOSURES. THIS ADVANCE NOTIFICATION IS CALCULATED BASED ON WORKWEEK OF MONDAY THROUGH FRIDAY AND SHALL NOT INCLUDE WEEKENDS OR HOLIDAYS.
11. THE CONTRACTOR SHALL TAKE NECESSARY PRECAUTIONS WHEN WORKING NEAR THE ABUTMENTS IF ELECTRICAL JUNCTIONS BOXES AND ATTACHED CONDUITS ARE PRESENT.
12. DO NOT SCALE PLANS FOR CONSTRUCTION DIMENSIONS.
13. PAVEMENT MARKING TAPE, TYPE III SHALL BE USED FOR SHORT TERM PAVEMENT MARKINGS ON ALL FINAL SURFACES.

MIXTURE REQUIREMENTS		VOIDS @ Ndes	QUALITY MANAGEMENT PROGRAM (QMP)
MIXTURE USES			
<b>CLASS D PATCH 12" (SPECIAL)</b>			
POLYMERIZED HOT-MIX ASPHALT SURFACE COURSE, MIX "E", IL-9.5, N70, 2"		4% AT 70 GYR.	QCQA
HOT-MIX ASPHALT BINDER COURSE, IL-19.0, N90, 10"		4% AT 90 GYR.	QCQA
QMP Designation: Quality Control/Quality Assurance (QC/QA); Quality Control for Performance (QCP)			

**NOTE:**

1. THE UNIT WEIGHT USED TO CALCULATE ALL HMA SURFACE MIXTURE QUANTITIES IS 112 LBS/SQYD/IN
2. THE "AC TYPE" FOR POLYMERIZED HMA MIXES SHALL BE "SBS/SBR PG 76-22" AND FOR NON-POLYMERIZED HMA THE "AC TYPE" SHALL BE "PG 64-22" UNLESS MODIFIED BY RECLAIMED MATERIALS SPECIFICATIONS.

MODEL: Default  
FILE: MainE\_Plan\ldot-aw\_bentley.com\PROJECTS\DOT\_Offices\District\_1\Project\11-290\_5B\_Exit\_Ramp\CADD\data\Design\11-290-5B-egenerate.dgn

	USER NAME = hassann	DESIGNED -	REVISED -	<b>STATE OF ILLINOIS DEPARTMENT OF TRANSPORTATION</b>	<b>INDEX OF SHEETS, STATE STANDARDS GENERAL NOTES AND GENERAL PAINT NOTES</b>	F.A.I. RTE.	SECTION	COUNTY	TOTAL SHEETS	SHEET NO.	
	DRAWN -	REVISIED -				290	FAI 290 22 WW	DUPAGE	23	2	
	PLOT SCALE = 100.0000' / in.	CHECKED -	REVISIED -			CONTRACT NO. 62R64					
	PLOT DATE = 5/19/2022	DATE -	REVISIED -			ILLINOIS FED. AID PROJECT					
				SCALE:	SHEET	OF	SHEETS	STA.	TO	STA.	

SUMMARY OF QUANTITIES			URBAN TOTAL QUANTITIES	CONSTRUCTION TYPE CODE					SUMMARY OF QUANTITIES			URBAN TOTAL QUANTITIES	CONSTRUCTION TYPE CODE					
CODE NO	ITEM	UNIT		100% STATE 0013						CODE NO	ITEM		UNIT	100% STATE 0013				
25000210	SEEDING, CLASS 2A	ACRE	0.2	0.2														
44000500	COMBINATION CURB AND GUTTER REMOVAL	FOOT	10	10														
44004250	PAVED SHOULDER REMOVAL	SO YD	31	31					*	63000003	STEEL PLATE BEAM GUARDRAIL, TYPE A, 9 FOOT POSTS	FOOT	27.5	27.5				
48300500	PORTLAND CEMENT CONCRETE SHOULDERS 10"	SO YD	17	17					*	63100089	TRAFFIC BARRIER TERMINAL, TYPE 6B	EACH	1	1				
50102400	CONCRETE REMOVAL	CU YD	12	12					*	63100167	TRAFFIC BARRIER TERMINAL, TYPE 1 (SPECIAL) TANGENT	EACH	1	1				
50104650	SLOPE WALL REMOVAL	SO YD	37	37						63200310	GUARDRAIL REMOVAL	FOOT	115	115				
50200100	STRUCTURE EXCAVATION	CU YD	12	12					*	66900200	NON-SPECIAL WASTE DISPOSAL	CU YD	12	12				
50300225	CONCRETE STRUCTURES	CU YD	12	12					*	66900530	SOIL DISPOSAL ANALYSIS	EACH	1	1				
50300300	PROTECTIVE COAT	SO YD	13	13					*	66901001	REGULATED SUBSTANCES PRE-CONSTRUCTION PLAN	L SUM	1	1				
50800205	REINFORCEMENT BARS, EPOXY COATED	POUND	790	790					*	66901003	REGULATED SUBSTANCES FINAL CONSTRUCTION REPORT	L SUM	1	1				
51100100	SLOPE WALL 4 INCH	SO YD	37	37														
52200020	TEMPORARY SOIL RETENTION SYSTEM	SO FT	66	66					*	66901006	REGULATED SUBSTANCES MONITORING	CAL DA	5	5				
58600101	GRANULAR BACKFILL FOR STRUCTURES	CU YD	15	15						67100100	MOBILIZATION	L SUM	1	1				
59300100	CONTROLLED LOW-STRENGTH MATERIAL	CU YD	5	5						70200100	NIGHTTIME WORK ZONE LIGHTING	L SUM	1	1				
60600605	CONCRETE CURB, TYPE B	FOOT	10	10						70300100	SHORT TERM PAVEMENT MARKING	FOOT	412	412				

FILE NAME =	USER NAME = hassam	DESIGNED -	REVISED -
pw\N\dot-pw\benley.com\PIW\DOT\Documents\1\DOT - Office\District\Projects\1-290 EB Ramp\CAD\Drawings\2022\2022.dgn		CHECKED -	REVISED -
		DATE -	REVISED -

**STATE OF ILLINOIS  
DEPARTMENT OF TRANSPORTATION**

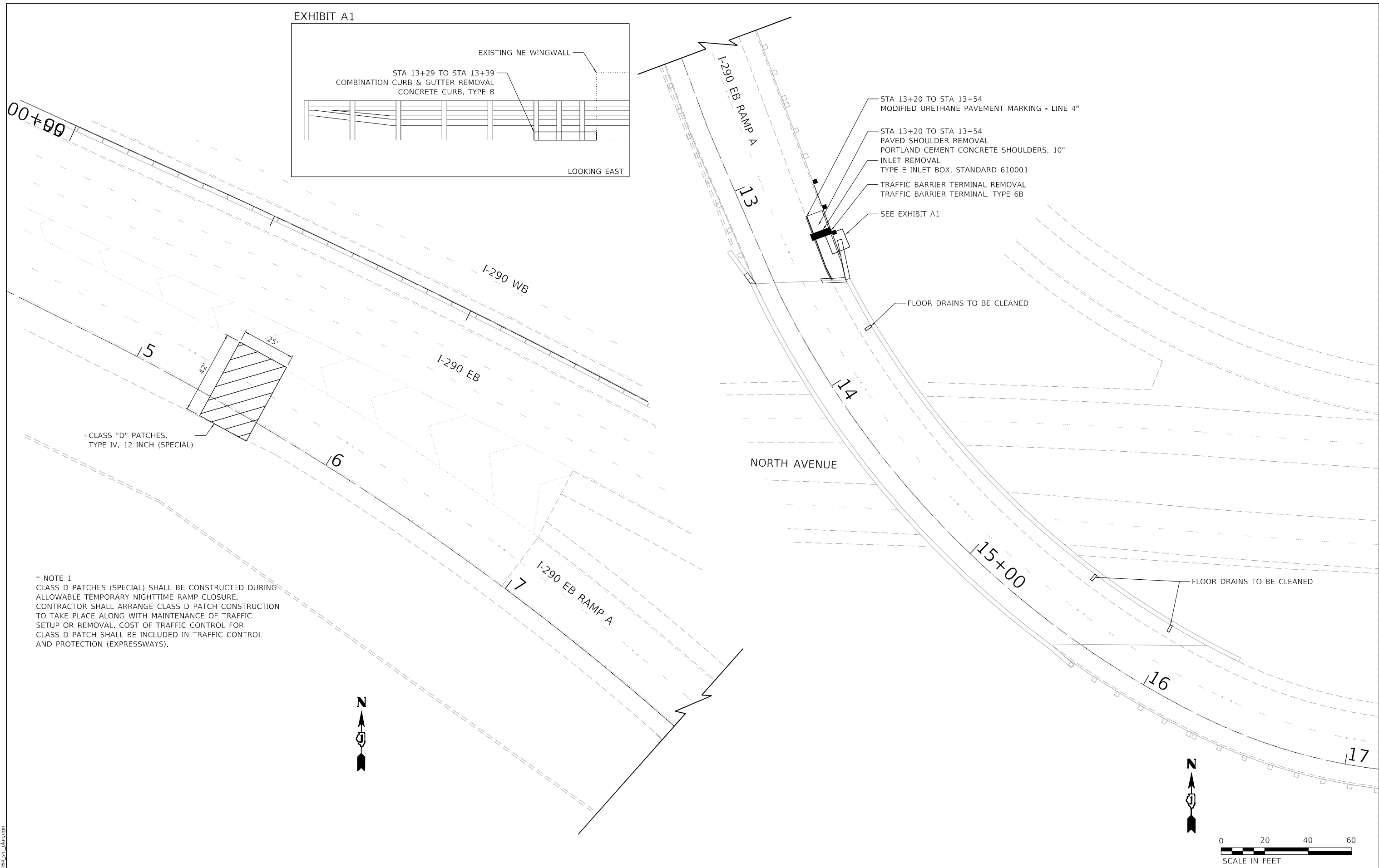
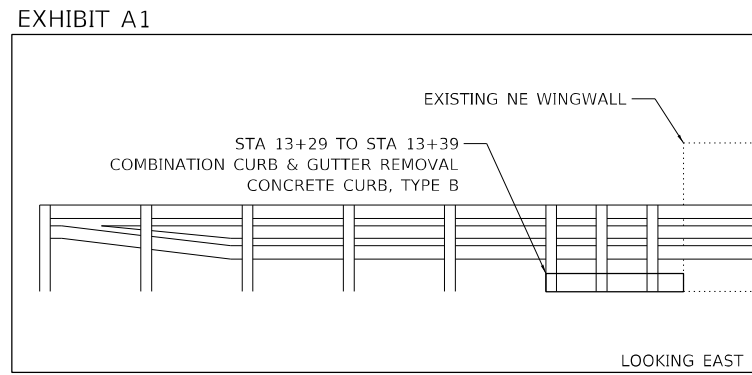
**I-290 EB RAMP TO US-20 OVER IL-64  
SUMMARY OF QUANTITIES**

SCALE: SHEET NO. OF SHEETS STA. TO STA.

F.A.I. RTE.	SECTION	COUNTY	TOTAL SHEETS	SHEET NO.
290	FAI 290 22 WW		23	3
FED. ROAD DIST. NO. 1 ILLINOIS FED. AID PROJECT			CONTRACT NO. 62R64	

SUMMARY OF QUANTITIES			URBAN TOTAL QUANTITIES	CONSTRUCTION TYPE CODE					SUMMARY OF QUANTITIES			URBAN TOTAL QUANTITIES	CONSTRUCTION TYPE CODE					
CODE NO	ITEM	UNIT		100% STATE 0013						CODE NO	ITEM		UNIT	100% STATE 0013				
70300150	SHORT TERM PAVEMENT MARKING REMOVAL	SO FT	1638	1638						70600332	IMPACT ATTENUATORS, RELOCATE (FULLY REDIRECTIVE, NARROW), TEST LEVEL 3	EACH	1	1				
70300211	TEMPORARY PAVEMENT MARKING LETTERS AND SYMBOLS - PAINT	SO FT	37	37						* 78000100	THERMOPLASTIC PAVEMENT MARKING - LETTERS AND SYMBOLS	SO FT	37	37				
70300221	TEMPORARY PAVEMENT MARKING - LINE 4"- PAINT	FOOT	1518	1518						* 78000200	THERMOPLASTIC PAVEMENT MARKING - LINE 4"	FOOT	1458	1458				
70300231	TEMPORARY PAVEMENT MARKING - LINE 5"- PAINT	FOOT	290	290						* 78000300	THERMOPLASTIC PAVEMENT MARKING - LINE 5"	FOOT	290	290				
70300241	TEMPORARY PAVEMENT MARKING - LINE 6"- PAINT	FOOT	350	350						* 78000500	THERMOPLASTIC PAVEMENT MARKING - LINE 8"	FOOT	1149	1149				
70300251	TEMPORARY PAVEMENT MARKING - LINE 8"- PAINT	FOOT	1149	1149						* 78003137	PREFORMED PLASTIC PAVEMENT MARKING, TYPE B - LINE 7"	FOOT	60	60				
70306120	TEMPORARY PAVEMENT MARKING - LINE 4" - TYPE III TAPE	FOOT	120	120						* 78009004	MODIFIED URETHANE PAVEMENT MARKING - LINE 4"	FOOT	414	414				
70307120	TEMPORARY PAVEMENT MARKING - LINE 4" - TYPE IV TAPE	FOOT	4500	4500						* 78011040	GROOVING FOR RECESSED PAVEMENT MARKING 8"	FOOT	60	60				
70400100	TEMPORARY CONCRETE BARRIER	FOOT	175	175						* 78100300	REPLACEMENT REFLECTOR	EACH	50	50				
70400200	RELOCATE TEMPORARY CONCRETE BARRIER	FOOT	175	175						* 78200005	GUARDRAIL REFLECTORS, TYPE A	EACH	2	2				
70600260	IMPACT ATTENUATORS, TEMPORARY (FULLY REDIRECTIVE, NARROW), TEST LEVEL 3	EACH	1	1						* 78200011	BARRIER WALL REFLECTORS, TYPE C	EACH	24	24				





\* CLASS "D" PATCHES, TYPE IV, 12 INCH (SPECIAL)

\* NOTE 1  
 CLASS D PATCHES (SPECIAL) SHALL BE CONSTRUCTED DURING ALLOWABLE TEMPORARY NIGHTTIME RAMP CLOSURE. CONTRACTOR SHALL ARRANGE CLASS D PATCH CONSTRUCTION TO TAKE PLACE ALONG WITH MAINTENANCE OF TRAFFIC SETUP OR REMOVAL. COST OF TRAFFIC CONTROL FOR CLASS D PATCH SHALL BE INCLUDED IN TRAFFIC CONTROL AND PROTECTION (EXPRESSWAYS).



MODEL: Default  
 FILE NAME: D:\62R64.dwg  
 USER: jkp

**CHASTAIN & ASSOCIATES LLC**  
 CONSULTING ENGINEERS  
 184-001397

USER NAME = _USER_	DESIGNED - JKP	REVISED -
DRAWN - DMW	REVISIONS -	
PLOT SCALE = 40,0000 */ in.	CHECKED - SPF	REVISED -
PLOT DATE = 5/10/2022	DATE - 5/9/2022	REVISED -

**STATE OF ILLINOIS  
 DEPARTMENT OF TRANSPORTATION**

**I-290 EB RAMP A TO US 20 OVER IL 64 (NORTH AVENUE)  
 ROADWAY REPAIR PLAN**

SCALE: 1"=20'    SHEET 1 OF 1 SHEETS    STA. 5+00 TO STA. 17+00

F.A.I. RTE.	SECTION	COUNTY	TOTAL SHEETS	SHEET NO.
290	FAI 290 22 WW	DUPAGE	23	6
CONTRACT NO. 62R64				
ILLINOIS FED. AID PROJECT				

## SUGGESTED SEQUENCE OF CONSTRUCTION & MAINTENANCE OF TRAFFIC

### STAGE I

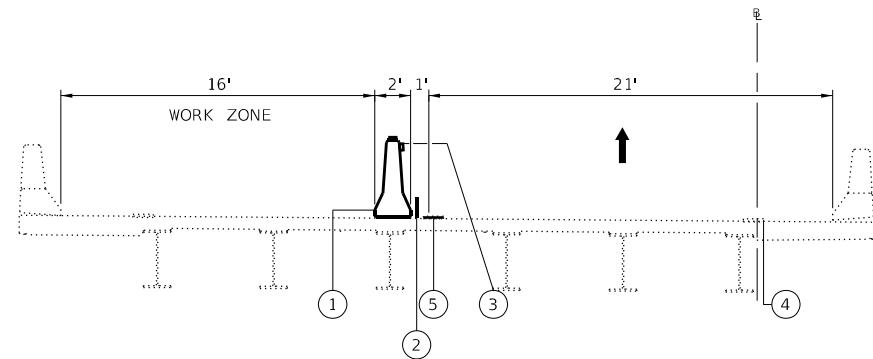
1. INSTALL STAGE I TRAFFIC CONTROL ALONG I-290 EB RAMP A USING STANDARD 701401. INSTALL TEMPORARY CONCRETE BARRIER USING STANDARD 701426. MERGE I-290 EB RAMP A TRAFFIC TO THE LEFT LANE.
2. PERFORM BRIDGE REPAIRS ON NE WINGWALL, PARAPET, ABUMENT JOINT, AND APPROACH SHOULDER.

### STAGE II

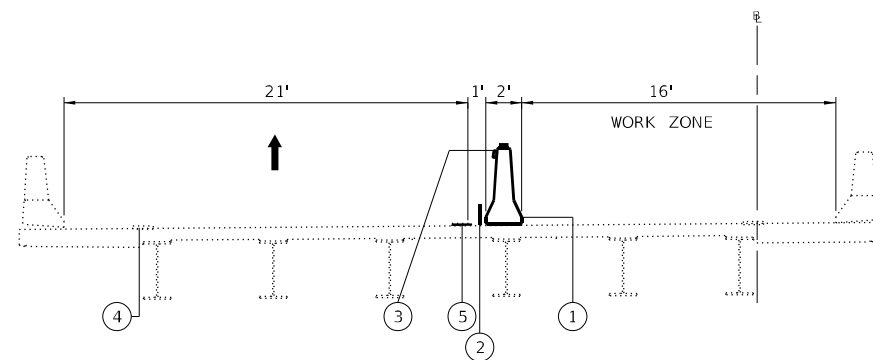
1. RELOCATE STAGE II TRAFFIC CONTROL ON I-290 EB RAMP A AND REMOVE STAGE I TRAFFIC CONTROL DEVICES. RELOCATE TEMPORARY CONCRETE BARRIER. MERGE I-290 EB RAMP A TRAFFIC TO THE LEFT LANE.
2. PERFORM BRIDGE REPAIRS ON NW WINGWALL.
3. REMOVE STAGE II TEMPORARY CONCRETE BARRIER.
4. REMOVE STAGE II TRAFFIC CONTROL DEVICES.

## MAINTENANCE OF TRAFFIC GENERAL NOTES:

1. THE TRAFFIC CONTROL DEPICTED HEREIN IS THE MINIMUM REQUIREMENT. ADDITIONAL TRAFFIC CONTROL DEVICES AS SPECIFIED IN THE HIGHWAY STANDARDS AS SHOWN IN THE INDEX OF SHEETS AND THE SPECIAL PROVISIONS SHALL BE PLACED BY THE CONTRACTOR TO THE SATISFACTION OF THE ENGINEER. ALL TRAFFIC CONTROL DEVICES SHALL BE CONSIDERED INCLUDED IN THE COST OF TRAFFIC CONTROL AND PROTECTION, (SPECIAL) UNLESS OTHERWISE INDICATED WITHIN THESE GENERAL NOTES, PLANS OR SPECIAL PROVISIONS.
2. THE CONTRACTOR SHALL FURNISH, INSTALL, MAINTAIN AND REMOVE ALL SIGNS AND SIGN SUPPORTS REQUIRED FOR MAINTENANCE OF TRAFFIC.
3. THE CONTRACTOR SHALL BE RESPONSIBLE FOR PROVIDING LABOR, SIGNS AND TRAFFIC CONTROL DEVICES NECESSARY FOR THE MAINTENANCE OF TRAFFIC UNLESS NOTED OTHERWISE IN THE SPECIAL PROVISIONS.
4. THE CONTRACTOR SHALL CONTACT THE DISTRICT ONE TRAFFIC CONTROL SUPERVISOR AT CARLOS.MUNOZ@ILLINOIS.GOV A MINIMUM OF 72 HOURS IN ADVANCE OF BEGINNING THE WORK.
5. IN ADVANCE OF CONSTRUCTION, ONE (1) PORTABLE CHANGEABLE MESSAGE SIGN SHALL BE PLACED AT I-290 EB RAMP A NORTH END OF THE PROJECT, AND AS DIRECTED AT A LOCATION DESIGNATED BY THE ENGINEER TO INFORM MOTORISTS OF THE UPCOMING CONSTRUCTION ON I-290 EB RAMP A. THE MESSAGE SHALL BE APPROVED BY THE ENGINEER.
6. DRUMS OR TYPE II BARRICADES EQUIPPED WITH MONO-DIRECTIONAL STEADY BURN LIGHT SHALL BE PROVIDED AS SHOWN IN THE PLANS.
7. ALL "ROAD CONSTRUCTION AHEAD" AND " SPEED LIMIT AHEAD" SIGNS, AND TYPE III BARRICADES SHALL BE EQUIPPED WITH MONO-DIRECTIONAL TYPE A AMBER FLASHING LIGHTS.
8. ALL EXISTING SIGNS THAT CONFLICT WITH THE TRAFFIC CONTROL PLAN SHALL BE COVERED OR REMOVED IN ACCORDANCE WITH ARTICLE 107.25 OF THE STANDARD SPECIFICATIONS.
9. THE CONTRACTOR SHALL BE REQUIRED TO MAINTAIN TRAFFIC IN ACCORDANCE WITH THE MAINTENANCE OF TRAFFIC PLANS, SPECIAL PROVISIONS, APPLICABLE STATE STANDARDS, AND AS DIRECTED BY THE ENGINEER. ANY CHANGES TO THE MAINTENANCE OF TRAFFIC SHALL BE SUBMITTED TO THE ENGINEER FOR APPROVAL PRIOR TO IMPLEMENTING ANY CHANGES.
10. TRAFFIC CONDITIONS, ACCIDENTS, AND OTHER UNFORESEEN EMERGENCY CONDITIONS MAY REQUIRE THE ENGINEER TO RESTRICT, MODIFY OR REMOVE LANE CLOSURES OR CHANNELIZATION SHOWN IN THE PLANS. THE CONTRACTOR SHALL PROMPTLY RESPOND AT THE TIME OF NOTIFICATION BY THE ENGINEER FOR THE MAINTENANCE OF TRAFFIC CONTROL DEVICES.
11. THE ENGINEER SHALL BE INFORMED A MINIMUM OF 48 HOURS IN ADVANCE OF ANY PROPOSED CHANGE TO THE SUGGESTED STAGES OF CONSTRUCTION AND TRAFFIC CONTROL PLAN.
12. WHEN THEY ARE NO LONGER NECESSARY, ALL TRAFFIC CONTROL DEVICES SHALL IMMEDIATELY BE REMOVED, COVERED OR TURNED AWAY FROM TRAFFIC. WHEN A SIGN IS COVERED, ITS POST SHALL HAVE A REFLECTIVE 3" X 6" DELINEATOR INSTALLED. THE COST OF THE DELINEATOR IS INCLUDED IN THE COST OF TRAFFIC CONTROL AND PROTECTION, (SPECIAL).
13. TEMPORARY CONCRETE BARRIERS AND TEMPORARY IMPACT ATTENUATORS SHALL BE PLACED AS SHOWN IN THE PLANS. FURNISHING, INSTALLING AND RELOCATING TEMPORARY CONCRETE BARRIER AND TEMPORARY IMPACT ATTENUATORS SHALL BE IN ACCORDANCE WITH IDOT SPECIAL PROVISIONS, IDOT HIGHWAY STANDARDS, STANDARD SPECIFICATIONS, AND AS DIRECTED BY THE ENGINEER. TEMPORARY CONCRETE BARRIERS MAY NOT BE PINNED TO THE BRIDGE DECK OR APPROACH PAVEMENT.
14. IMMEDIATELY AFTER THE COMPLETION OF CONSTRUCTION, RESTORE ALL PERMANENT PAVEMENT MARKINGS, SIGNS, AND OTHER TRAFFIC CONTROL DEVICES THAT WERE COVERED, REMOVED, DAMAGED OR OTHERWISE AFFECTED BY CONSTRUCTION.
15. A MAINTENANCE OF TRAFFIC PLAN SHALL BE SUBMITTED TO THE DISTRICT ONE EXPRESSWAY TRAFFIC CONTROL SUPERVISOR 14 DAYS IN ADVANCE OF ANY STAGE CHANGES OR FULL EXPRESSWAY CLOSURES. THE MAINTENANCE OF TRAFFIC PLAN SHALL INCLUDE, BUT NOT BE LIMITED TO: LANE AND RAMP CLOSURES, EXISTING GEOMETRICS, AND EQUIPMENT AND MATERIAL LOCATION. SEE KEEPING THE EXPRESSWAY OPEN TO TRAFFIC CONTRACT SPECIAL PROVISIONS FOR ADDITIONAL REQUIREMENTS.



**I-290 EB RAMP A  
STAGE I MOT BRIDGE TYPICAL SECTION**



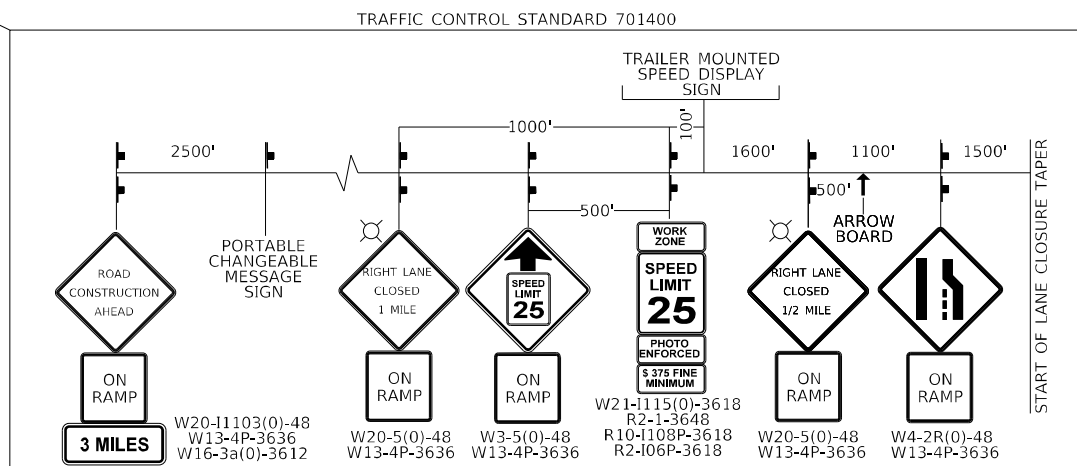
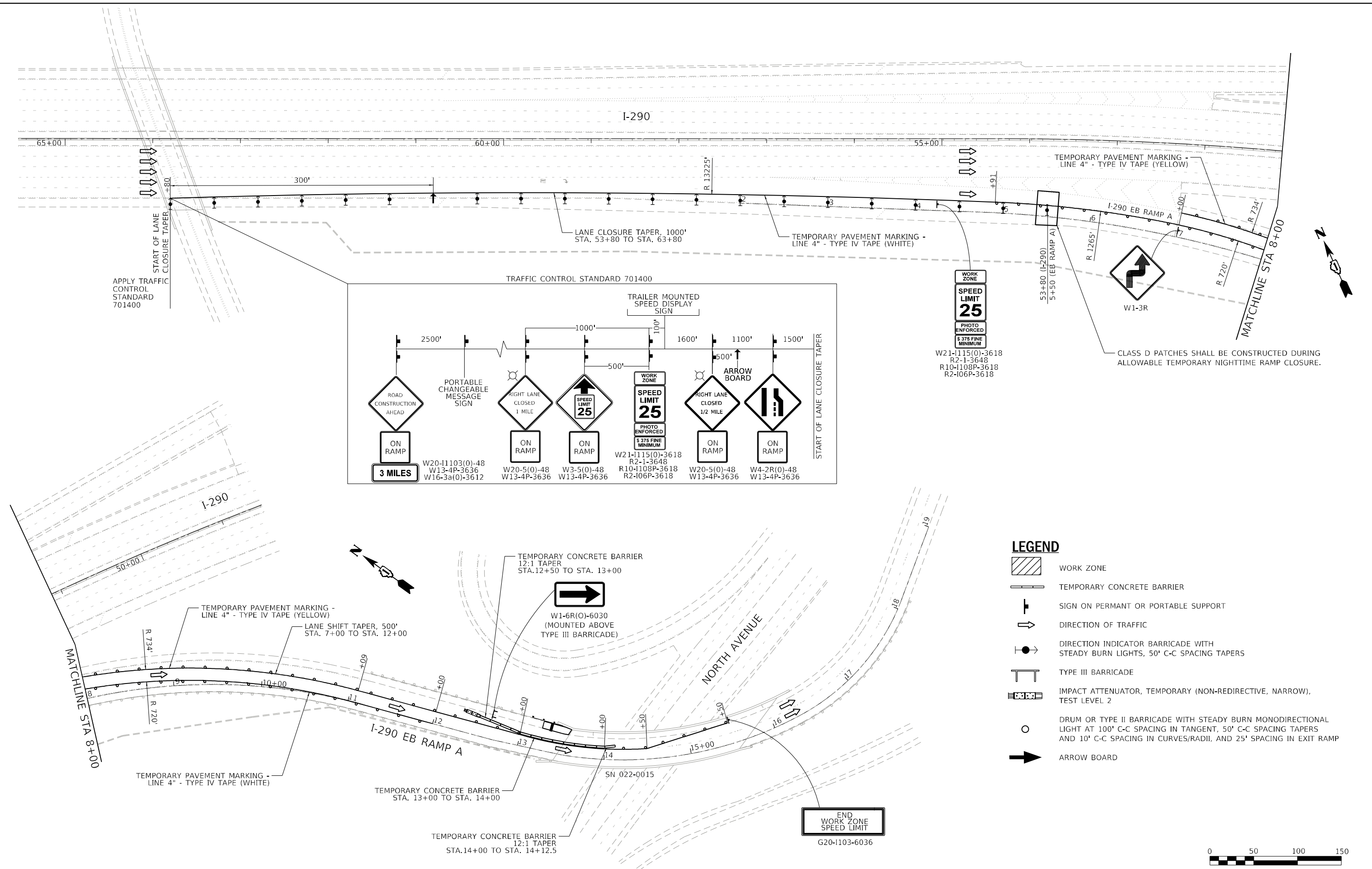
**I-290 EB RAMP A  
STAGE II MOT BRIDGE TYPICAL SECTION**

### MOT LEGEND:

- ① TEMPORARY CONCRETE BARRIER WALL
- ② TEMPORARY PAVEMENT MARKING - LINE 6" - PAINT
- ③ BARRIER WALL REFLECTORS, TYPE C (SEE STD. 782006)
- ④ EXISTING PAVEMENT MARKING
- ⑤ TEMPORARY PAVEMENT MARKING - LINE 4" - TYPE IV TAPE

MODEL Path: \\chastain\work\184-001397\184-001397.dwg  
FILE NAME: \\chastain\work\184-001397\184-001397.dwg  
USER: jjoang  
DATE: 5/9/2022  
TIME: 10:00:00 AM

USER NAME = jjoang	DESIGNED - JKP	REVISED -
PLOT SCALE = 20,0000 * / in.	DRAWN - DMW	REVISED -
PLOT DATE = 5/9/2022	CHECKED - SPF	REVISED -
	DATE - 5/9/2022	REVISED -



- LEGEND**
- WORK ZONE
  - TEMPORARY CONCRETE BARRIER
  - SIGN ON PERMANT OR PORTABLE SUPPORT
  - DIRECTION OF TRAFFIC
  - DIRECTION INDICATOR BARRICADE WITH STEADY BURN LIGHTS, 50' C-C SPACING TAPERS
  - TYPE III BARRICADE
  - IMPACT ATTENUATOR, TEMPORARY (NON-REDIRECTIVE, NARROW), TEST LEVEL 2
  - DRUM OR TYPE II BARRICADE WITH STEADY BURN MONODIRECTIONAL LIGHT AT 100' C-C SPACING IN TANGENT, 50' C-C SPACING TAPERS AND 10' C-C SPACING IN CURVES/RADII, AND 25' SPACING IN EXIT RAMP
  - ARROW BOARD



MODEL: D:\6464... FILE NAME: D:\62R64-CH-MOT\_S000-1.dgn

**CHASTAIN & ASSOCIATES LLC**  
CONSULTING ENGINEERS  
184-001397

USER NAME = _USER_	DESIGNED - JKP	REVISED -
PLOT SCALE = 100,0000' / in.	DRAWN - DMW	REVISED -
PLOT DATE = 5/9/2022	CHECKED - SPF	REVISED -
	DATE - 5/9/2022	REVISED -

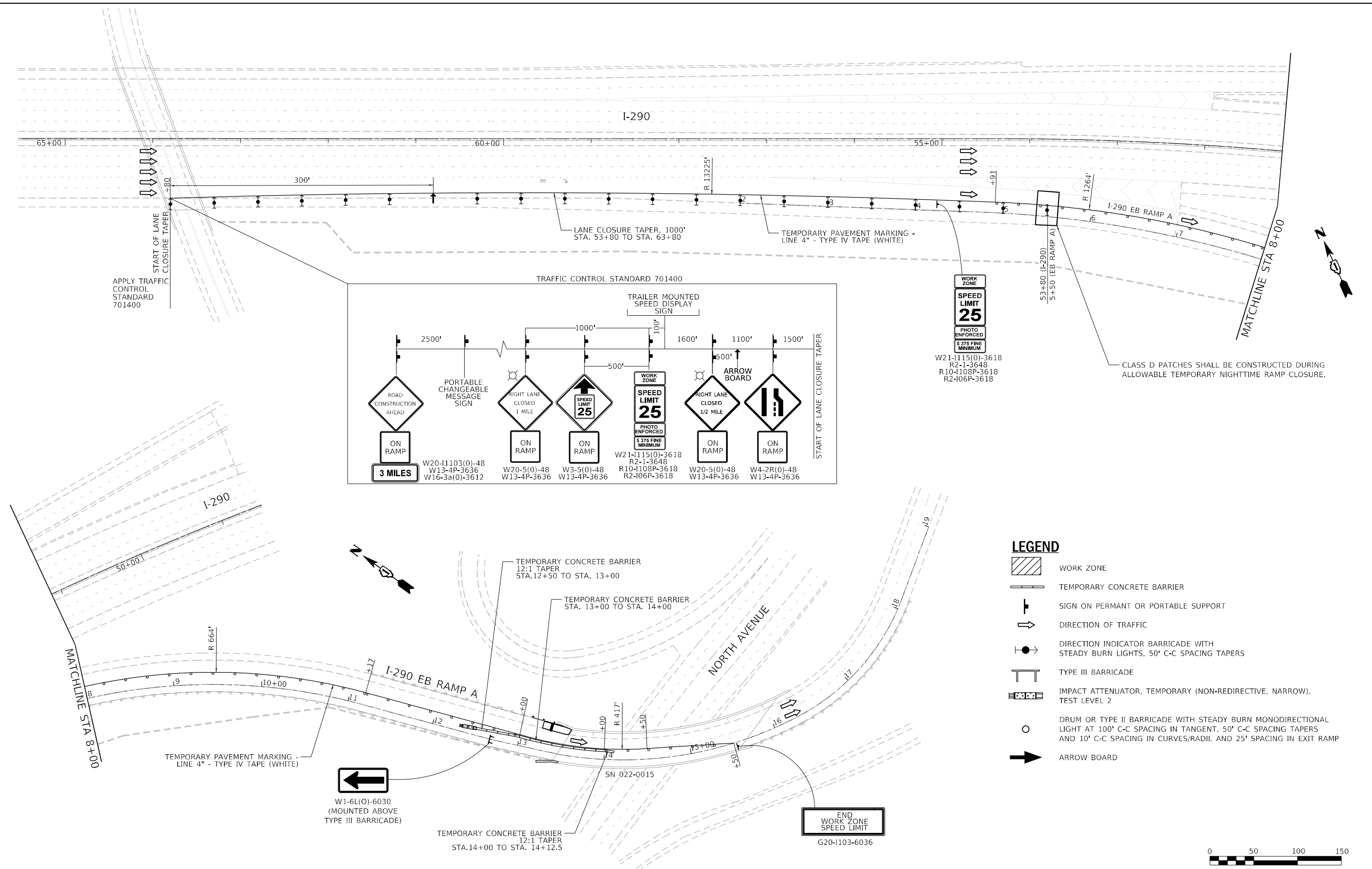
**STATE OF ILLINOIS  
DEPARTMENT OF TRANSPORTATION**

**I-290 EB RAMP A TO US 20 OVER IL 64 (NORTH AVENUE)  
MAINTENANCE OF TRAFFIC PLAN STAGE I**

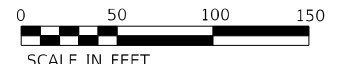
SCALE: 1"=50' SHEET 2 OF 3 SHEETS STA. 7+00 TO STA. 17+00

F.A.I. RTE.	SECTION	COUNTY	TOTAL SHEETS	SHEET NO.
290	FAI 290 22 WW	DUPAGE	23	8
ILLINOIS FED. AID PROJECT			CONTRACT NO. 62R64	





- LEGEND**
- WORK ZONE
  - TEMPORARY CONCRETE BARRIER
  - SIGN ON PERMANT OR PORTABLE SUPPORT
  - DIRECTION OF TRAFFIC
  - DIRECTION INDICATOR BARRICADE WITH STEADY BURN LIGHTS, 50' C-C SPACING TAPERS
  - TYPE III BARRICADE
  - IMPACT ATTENUATOR, TEMPORARY (NON-REDIRECTIVE, NARROW), TEST LEVEL 2
  - DRUM OR TYPE II BARRICADE WITH STEADY BURN MONODIRECTIONAL LIGHT AT 100' C-C SPACING IN TANGENT, 50' C-C SPACING TAPERS AND 10' C-C SPACING IN CURVES/RADI, AND 25' SPACING IN EXIT RAMP
  - ARROW BOARD



MODEL: D:\64\11  
 FILE NAME: D:\64\11\2022\CHM01\_Signs.dwg

**CHASTAIN & ASSOCIATES LLC**  
 CONSULTING ENGINEERS  
 184-001397

USER NAME = _USER_	DESIGNED - JKP	REVISED -
DRAWN - DMW	REVISED -	
PLOT SCALE = 100,0000' / in.	CHECKED - SPF	REVISED -
PLOT DATE = 5/9/2022	DATE - 5/9/2022	REVISED -

**STATE OF ILLINOIS  
 DEPARTMENT OF TRANSPORTATION**

**I-290 EB RAMP A TO US 20 OVER IL 64 (NORTH AVENUE)  
 MAINTENANCE OF TRAFFIC PLAN STAGE II**

SCALE: 1"=50'

SHEET 2 OF 3 SHEETS STA. 7+00 TO STA. 17+00

F.A.I. RTE.	SECTION	COUNTY	TOTAL SHEETS	SHEET NO.
290	FAI 290 22 WW	DUPAGE	23	9
CONTRACT NO. 62R64				
ILLINOIS FED. AID PROJECT				

**BENCH MARK:**

#8 sq. cut N.W. corner of S.E. retaining wall 48' right Sta. 50+65 North Ave. Elev. 655.03

**EXISTING STRUCTURE:**

The existing structure carries the Ramp Southbound I-290 to Eastbound Illinois 64 (North Avenue) over North Avenue and is a four span steel, non-continuous bridge which carries two lanes of traffic.

**SCOPE OF WORK:**

1. Remove bridge approach shoulder pavement at NE quadrant to facilitate wingwall reconstruction. Replace upon completion of other work.
2. Install Temporary Soil Retention System.
3. Remove and replace entire portion of NE wingwall above the footing, to include ±3' of the North Abutment backwall. Replacement includes parapet on top of wingwall.
4. Remove and replace Polymer Concrete joint at the North Abutment for an additional ±7' beyond the wingwall replacement length.
5. Remove and replace 5'-0" of the concrete parapet on top of the NW wingwall.
6. Repair substructure of North Abutment at NE corner.
7. Remove and replace sections of slopewall noted, fill voids with CLSM, and seal cracks in existing slopewall.

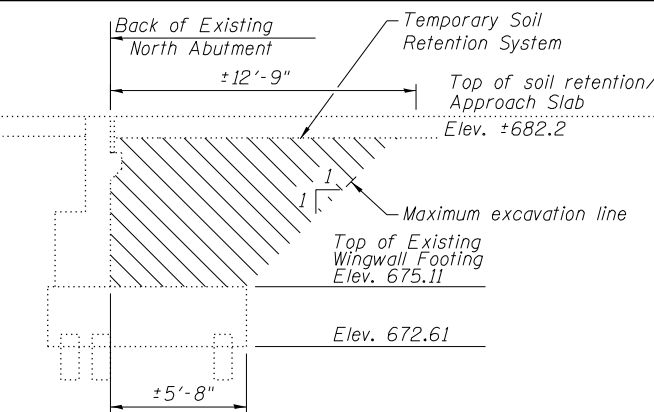
**GENERAL NOTES**

Reinforcement bars designated (E) shall be epoxy coated.

Plan dimensions and details relative to existing plans are subject to nominal construction variations. The Contractor shall field verify existing dimensions and details affecting new construction and make necessary approved adjustments prior to construction or ordering of materials. Such variations shall not be cause for additional compensation for a change in scope of the work, however the Contractor will be paid for the quantity actually furnished at the unit price bid for the work.

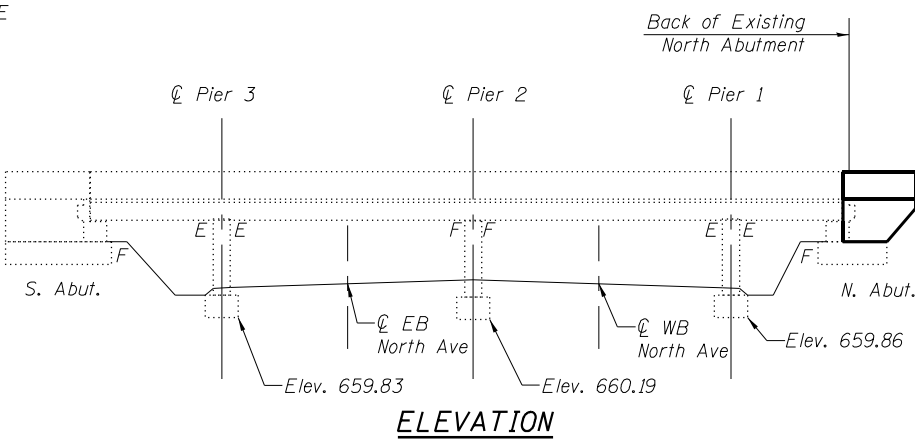
Existing reinforcement bars extending into removal area shall be cleaned, straightened and incorporated into the new construction. Any reinforcement bars that are damaged during concrete removal shall be replaced with an approved bar splicer or anchorage system. Cost included with Concrete Removal.

A cantilevered sheet piling design does not appear feasible and additional members or other retention systems may be necessary. The Contractor shall submit a temporary soil retention system design including plan details and calculations for review and acceptance by the Engineer.



**TEMPORARY SOIL RETENTION DETAIL**

(Looking West)



**ELEVATION**

**DESIGN STRESSES**

**EXISTING STRUCTURE**

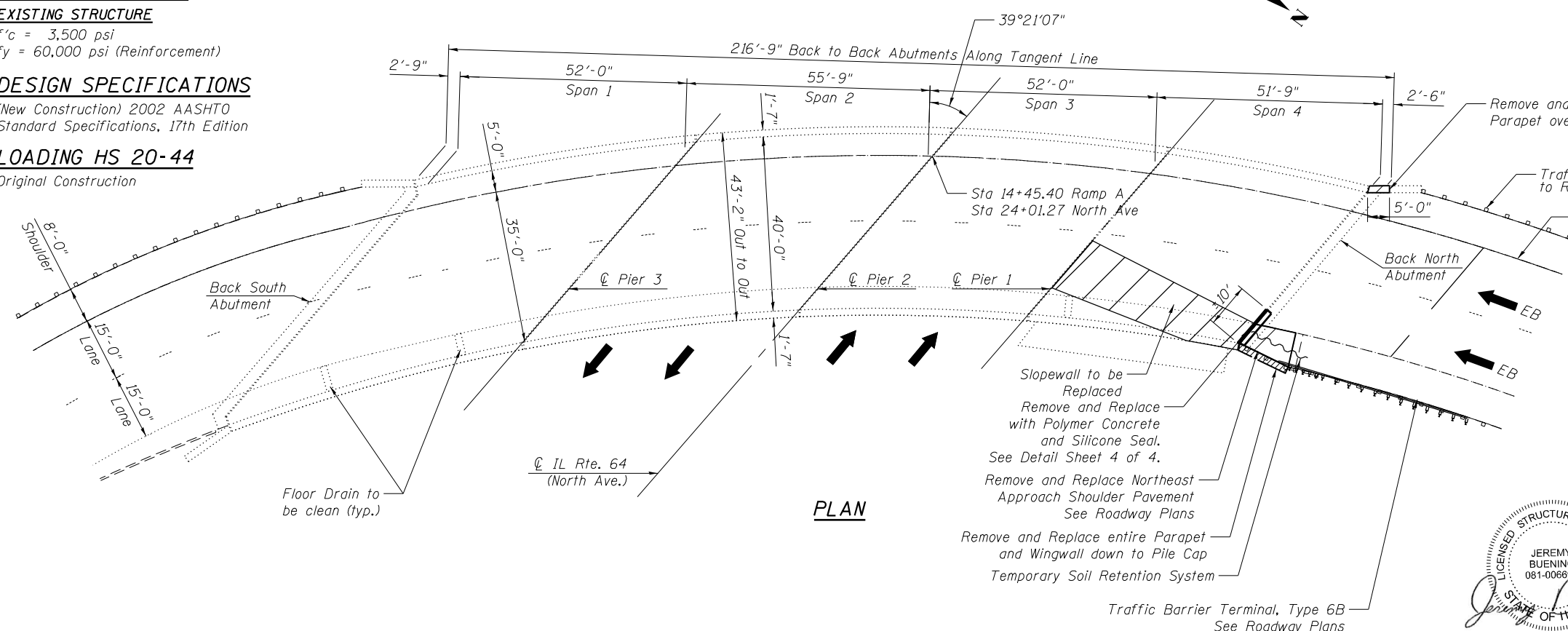
f'c = 3,500 psi  
fy = 60,000 psi (Reinforcement)

**DESIGN SPECIFICATIONS**

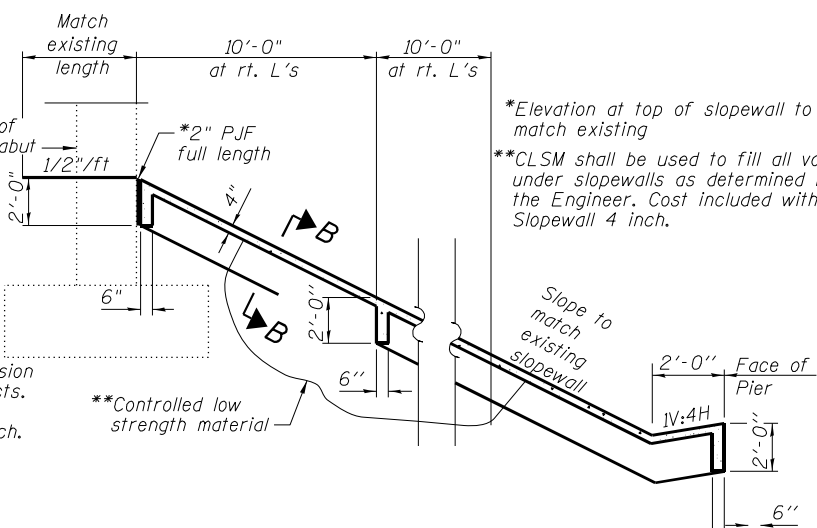
(New Construction) 2002 AASHTO Standard Specifications, 17th Edition

**LOADING HS 20-44**

Original Construction



**PLAN**



**SECTION THRU REPAIRED CONCRETE SLOPEWALL**

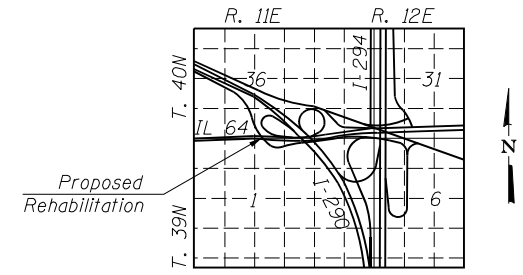
Slopewall shall be reinforced with welded wire fabric, 6" x 6" - W4.0 x W4.0, weighing 58 lbs. per 100 sq. ft.

**TOTAL BILL OF MATERIAL**

ITEM	UNIT	SUPER	SUB	TOTAL
Concrete Removal	Cu. Yd.	-	12.0	12.0
Slope Wall Removal	Sq Yd	-	37	37
Structure Excavation	Cu. Yd.	-	12	12
Concrete Structures	Cu. Yd.	-	12.0	12.0
Protective Coat	Sq. Yd.	-	13	13
Reinforcement Bars, Epoxy Coated	Pound	-	790	790
Slope Wall 4 Inch	Sq Yd	-	37	37
Temporary Soil Retention System	Sq. Ft.	-	66	66
Controlled Low-Strength Material	Cu Yd.	-	5	5
Floor Drains to be Cleaned	Each	-	3	3
Slope Wall Crack Sealing	Foot	-	55	55
Structural Repair of Concrete (Depth Equal To or Less Than 5 Inches)	Sq. Ft.	-	4	4
Polymer Concrete	Cu. Ft.	-	2.0	2.0

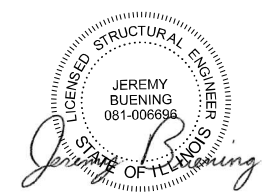
**INDEX OF SHEETS**

1. General Plan and Elevation
2. North Abutment and Wingwall Removal
3. North Abutment and Wingwall Repair
4. Wingwall, Parapet, & Joint Repair Details



**LOCATION SKETCH**

**GENERAL PLAN AND ELEVATION**  
**I-290 EB RAMP A TO US 20 OVER IL 64**  
**(NORTH AVENUE)**  
**SEC FAI 290 22 WW**  
**DUPAGE COUNTY**  
**STATION 14+45.40**  
**STRUCTURE NO. 022-0015**



Jeremy Buening, P.E., S.E. Date 05/10/2022  
 License Expires 11/30/22

MODEL: Defaul...  
 FILE NAME: I:\...  
 MODEL: Defaul...  
 FILE NAME: I:\...

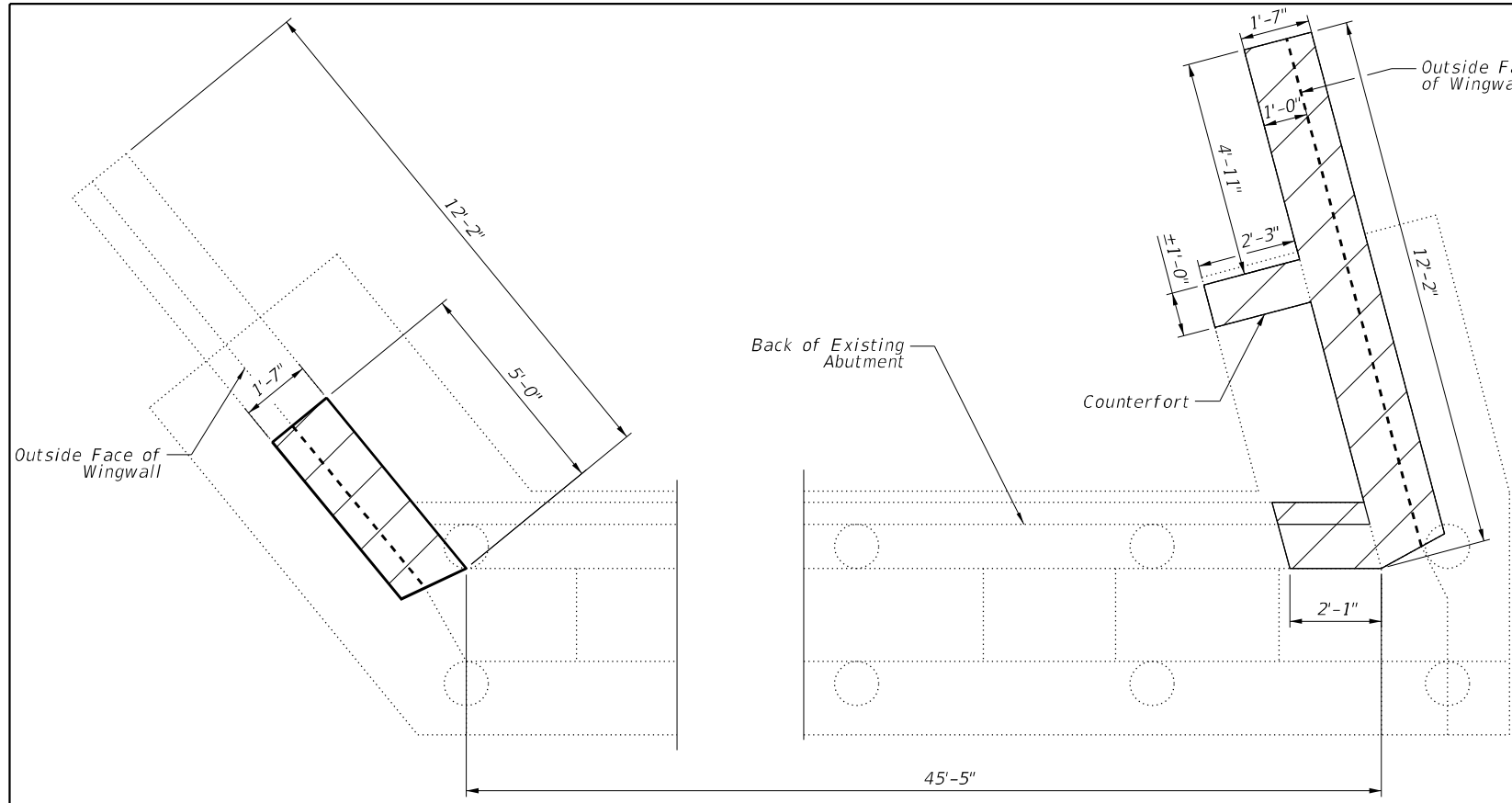


USER NAME = mmyska	DESIGNED - CMF	REVISED -
PLOT SCALE = 32.0000 */ in.	DRAWN - DMV	REVISED -
PLOT DATE = 5/10/2022	CHECKED - JMB	REVISED -
	DATE - 4/21/2022	REVISED -

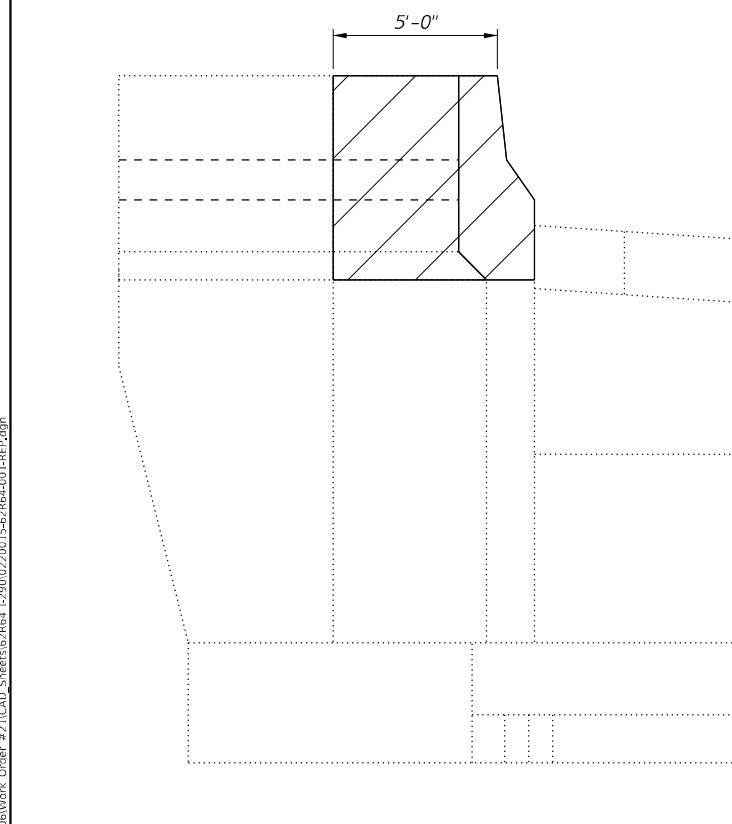
**STATE OF ILLINOIS**  
**DEPARTMENT OF TRANSPORTATION**

**I-290 EB RAMP A TO US 20 OVER IL 64 (NORTH AVENUE)**  
**GENERAL PLAN AND ELEVATION**  
 SCALE: SHEET 1 OF 4 SHEETS STA. TO STA.

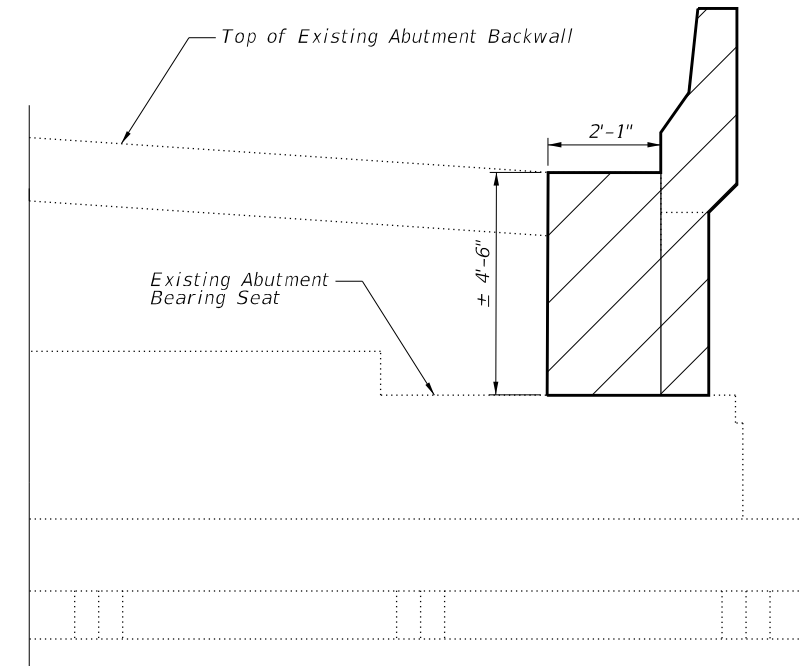
F.A.I. RTE.	SECTION	COUNTY	TOTAL SHEETS	SHEET NO.
290	FAI 290 22 WW	DUPAGE	23	10
	SN 022-0015	CONTRACT NO. 62R64		



**NORTH ABUTMENT REMOVAL PLAN**

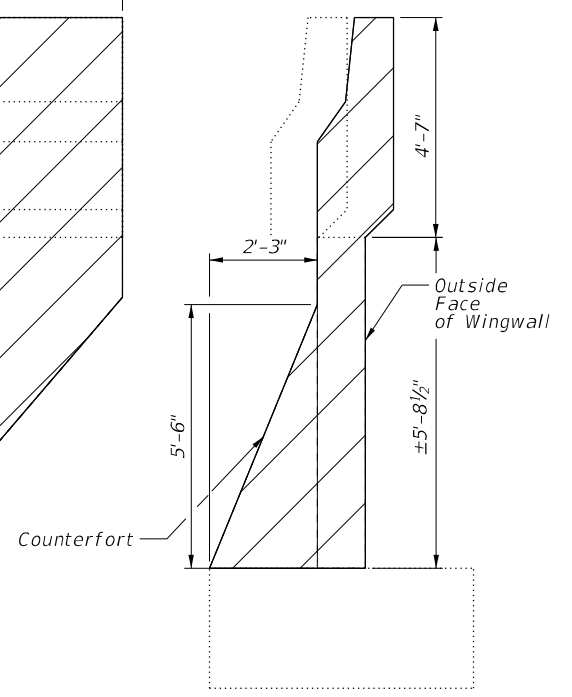


**NORTH ABUTMENT REMOVAL ELEVATION**

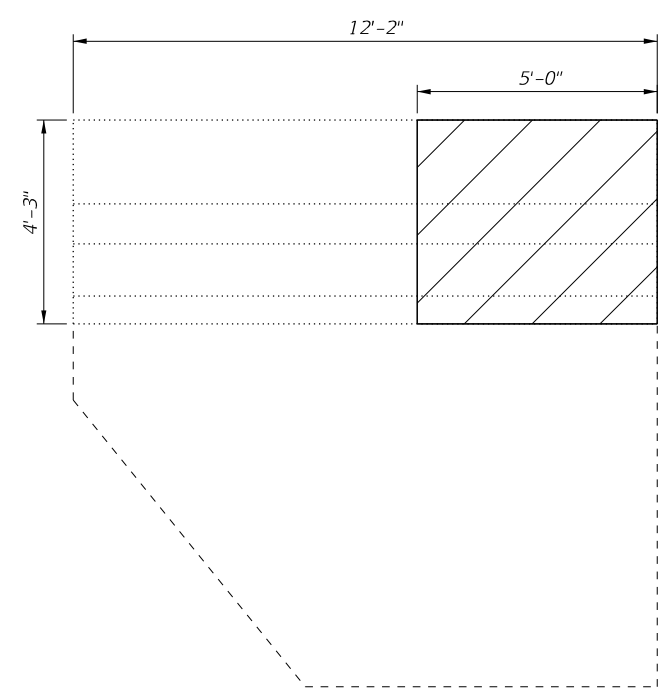


**OUTSIDE ELEVATION VIEW**

**EAST WINGWALL & PARAPET DETAILS**  
(Showing removal)

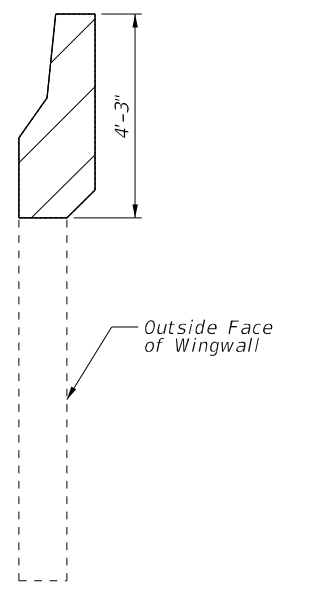


**SECTION**



**OUTSIDE ELEVATION VIEW**

**WEST WINGWALL & PARAPET DETAILS**  
(Showing removal)



**SECTION**

Existing reinforcement shall be cleaned and incorporated into the new construction. Cost included with Concrete Removal.  
Hatched areas indicate Concrete Removal.

MODEL Path: \\... CHASTAIN & ASSOCIATES LC CONSULTING ENGINEERS 184-001397

**CHASTAIN & ASSOCIATES LC**  
CONSULTING ENGINEERS  
184-001397

USER NAME = joang	DESIGNED - CMF	REVISED -
DRAWN - DMV	REVISIONS -	
PLOT SCALE = 4,0000' / in.	CHECKED - JMB	REVISIONS -
PLOT DATE = 5/9/2022	DATE - 4/21/2022	REVISIONS -

**STATE OF ILLINOIS**  
**DEPARTMENT OF TRANSPORTATION**

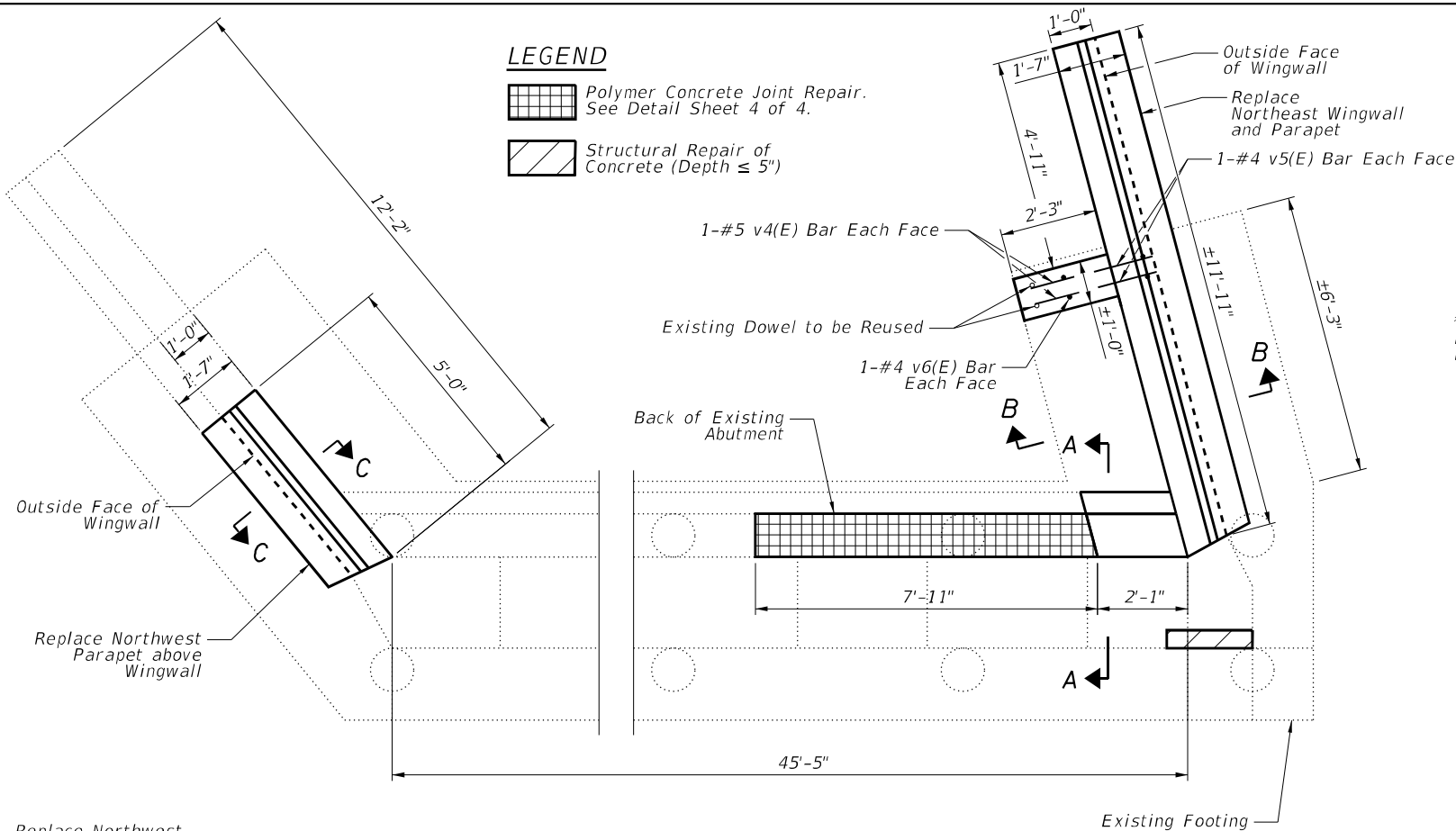
**I-290 EB RAMP A TO US 20 OVER IL 64 (NORTH AVENUE)**  
**NORTH ABUTMENT AND WINGWALL REMOVAL**

SCALE: SHEET 2 OF 4 SHEETS STA. TO STA.

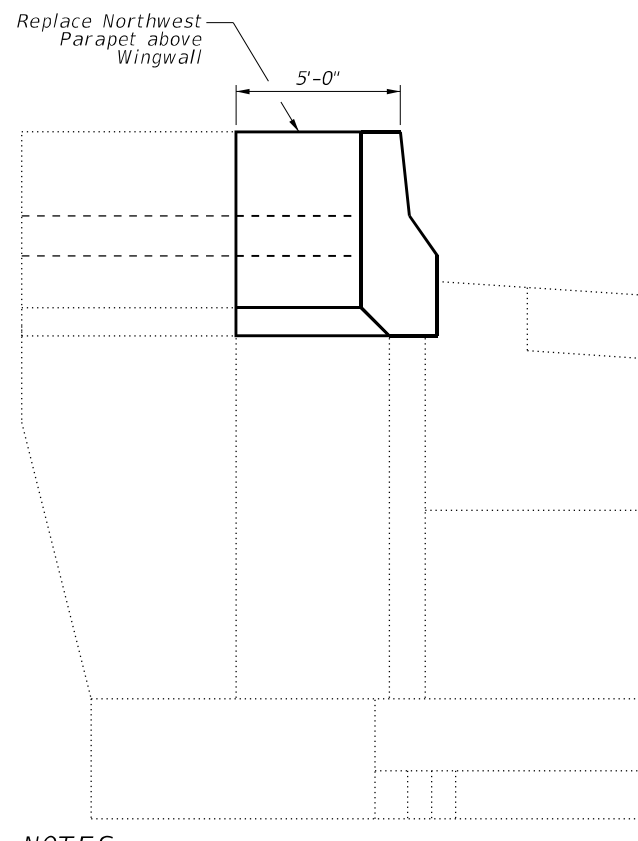
F.A.I. RTE. 290	SECTION FAI 290 22 WW	COUNTY SN 022-0015	TOTAL SHEETS 23	SHEET NO. 11
ILLINOIS FED. AID PROJECT			CONTRACT NO. 62R64	

**LEGEND**

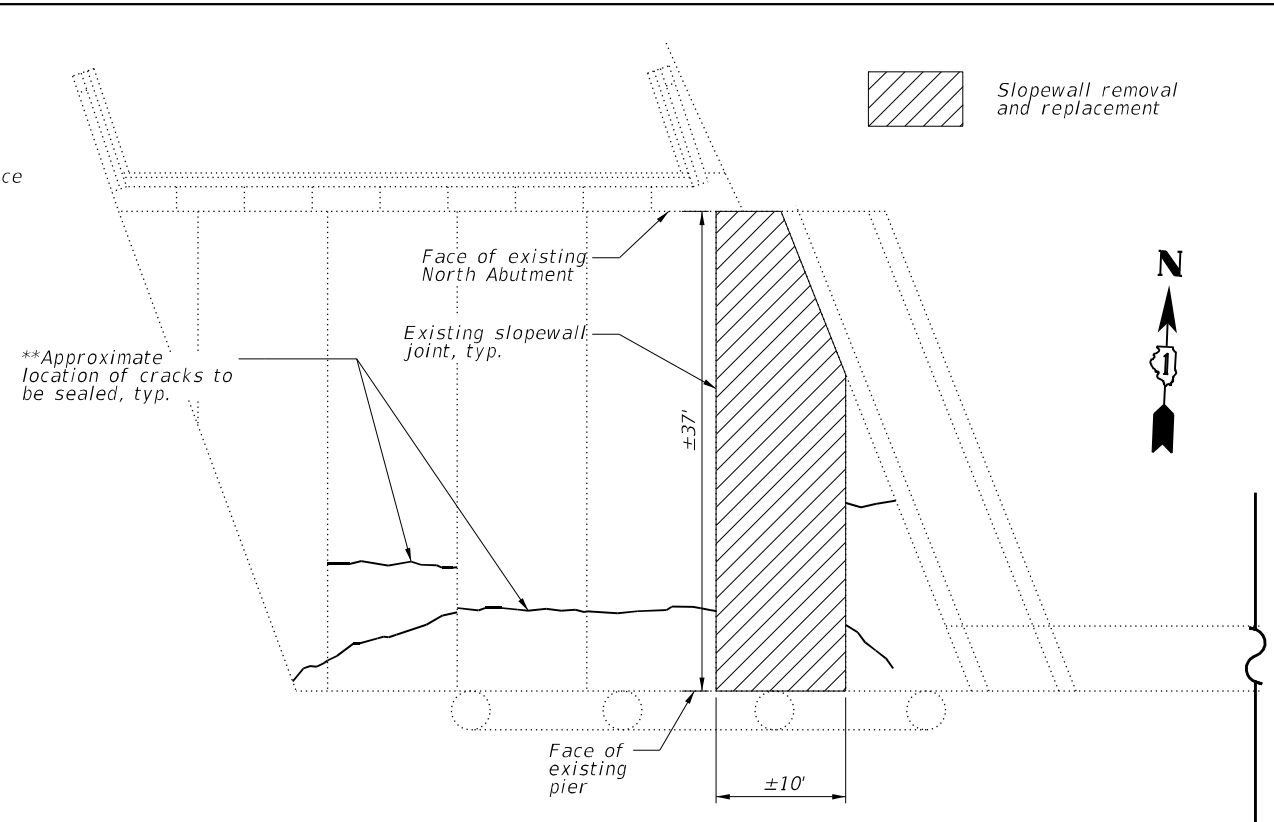
-  Polymer Concrete Joint Repair. See Detail Sheet 4 of 4.
-  Structural Repair of Concrete (Depth ≤ 5")



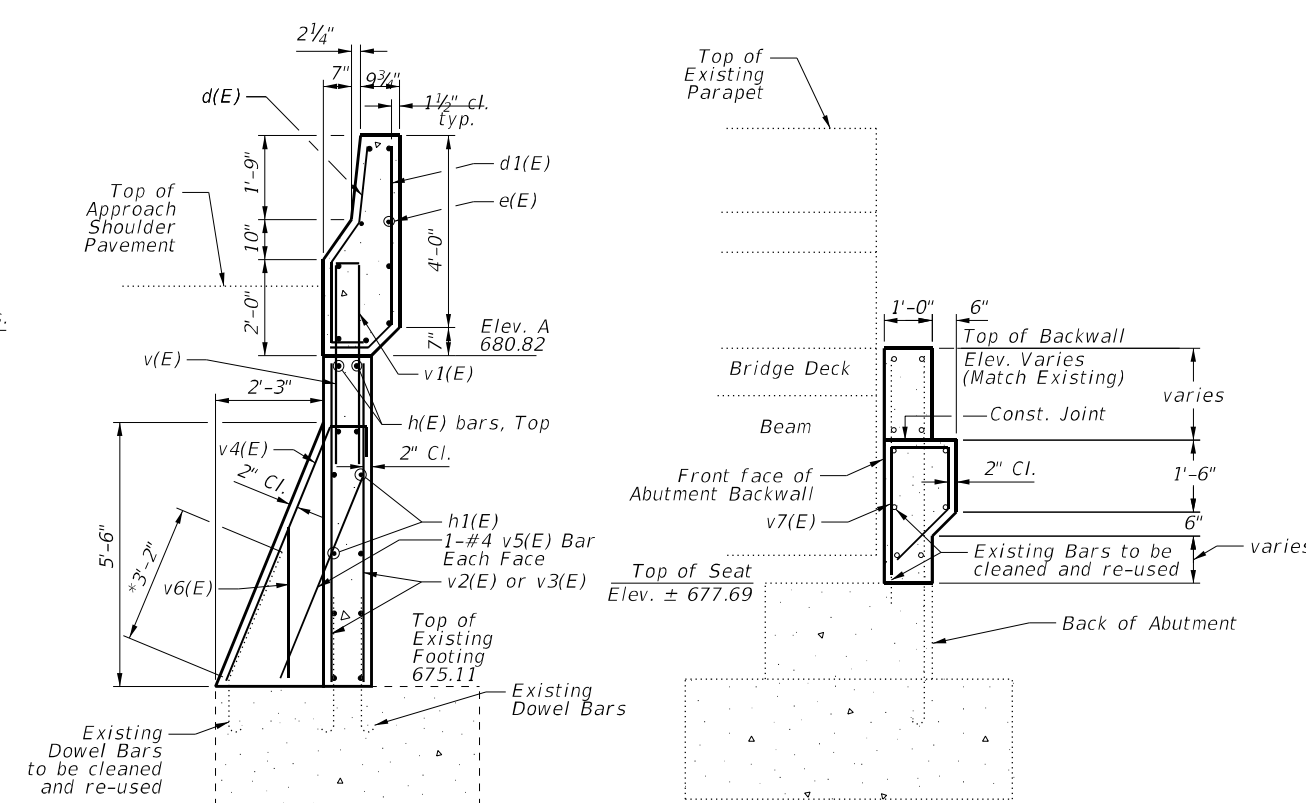
**NORTH ABUTMENT PLAN**



**NORTH ABUTMENT ELEVATION**



**NORTH ABUTMENT SLOPE WALL REPAIRS**



**SECTION B-B**

**SECTION A-A**

\*Field Trim existing dowel reinforcement to the length shown and lap with new v4(E) bars.

**NOTES:**

See Sheet 4 of 4 for Section C-C  
 See Sheet 4 of 4 for Details of Bars d(E), d1(E), v(E), v4(E), v7(E), and Bill of Materials

MODEL Path: \\...  
 FILE NAME: I:\...  
 ID: 0061008...  
 ORDER #21\CAD\_Sheets\62R64\_12000220015-62R64-002-REP.dwg  
 184-001397

**CHASTAIN & ASSOCIATES LLC**  
 CONSULTING ENGINEERS  
 184-001397

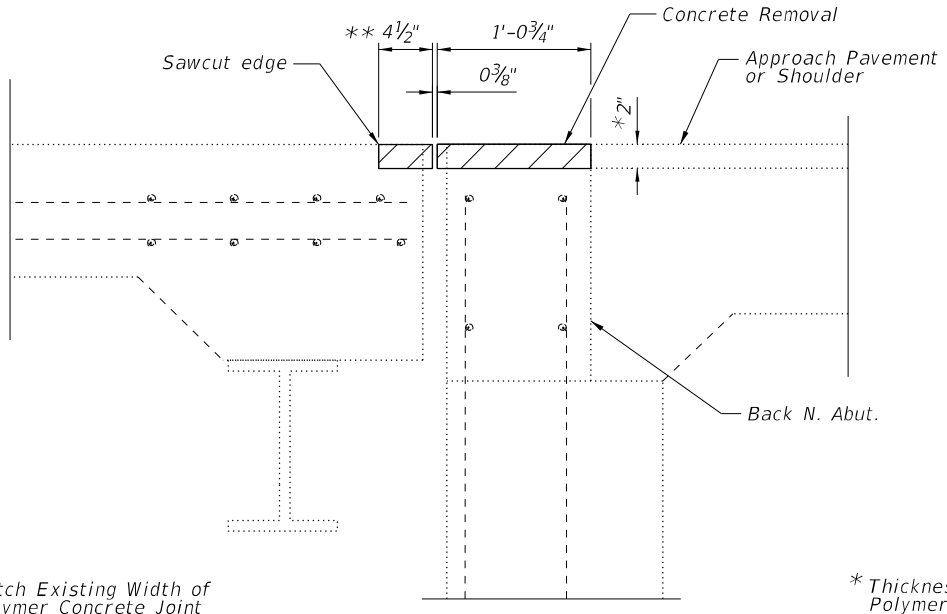
USER NAME = joang	DESIGNED - CMF	REVISED -
PLOT SCALE = 4,000' / in.	DRAWN - DMV	REVISED -
PLOT DATE = 5/9/2022	CHECKED - JMB	REVISED -
	DATE - 4/21/2022	REVISED -

**STATE OF ILLINOIS  
 DEPARTMENT OF TRANSPORTATION**

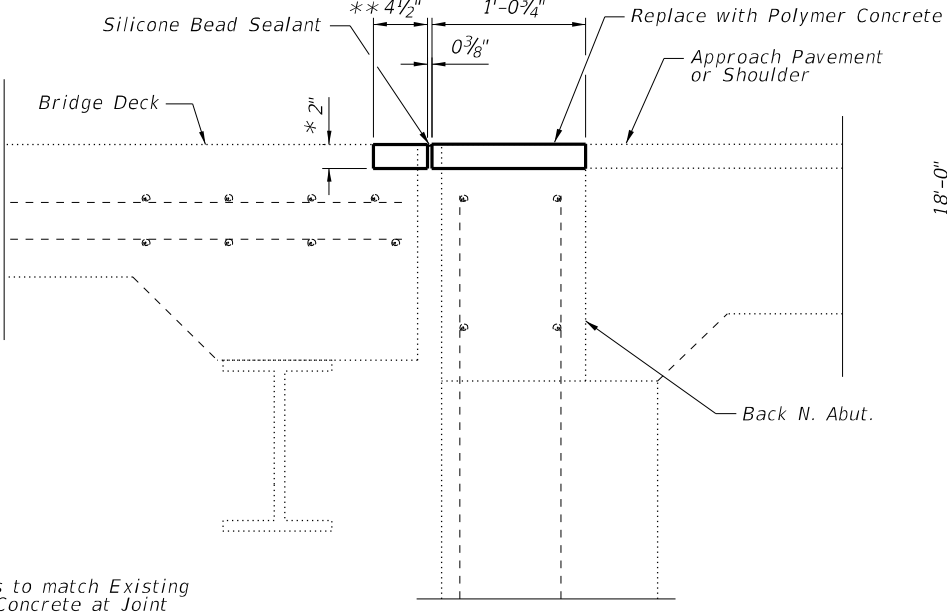
**I-290 EB RAMP A TO US 20 OVER IL 64 (NORTH AVENUE)  
 NORTH ABUTMENT AND WINGWALL REPAIR**

SCALE: SHEET 3 OF 4 SHEETS STA. TO STA.

F.A.I. RTE.	SECTION	COUNTY	TOTAL SHEETS	SHEET NO.
290	FAI 290 22 WW	DUPAGE	23	12
	SN 022-0015		CONTRACT NO. 62R64	
ILLINOIS FED. AID PROJECT				



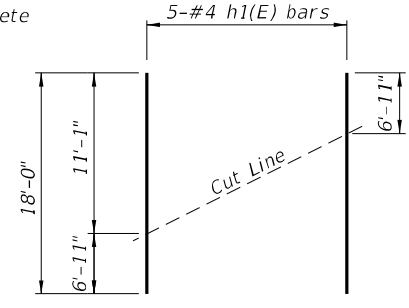
**NORTH ABUTMENT JOINT REMOVAL DETAIL**



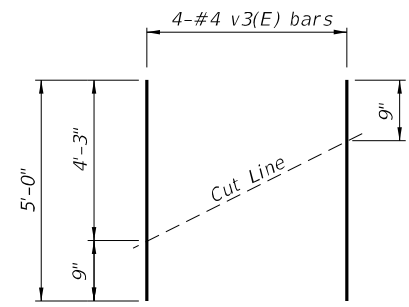
**NORTH ABUTMENT JOINT DETAIL**

\*\* Match Existing Width of Polymer Concrete Joint

\* Thickness to match Existing Polymer Concrete at Joint Verify in the field



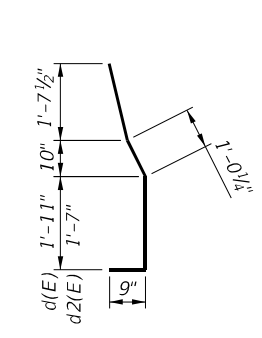
**BAR CUTTING DIAGRAM**  
Order h1(E) bars full length. Cut as shown and use remainder of bars in opposite face of wingwalls for the North Abutment.



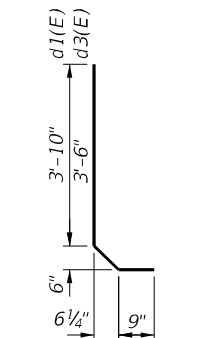
**BAR CUTTING DIAGRAM**  
Order v3(E) bars full length. Cut as shown and use remainder of bars in opposite face of wingwalls for the North Abutment.

**BILL OF MATERIAL**

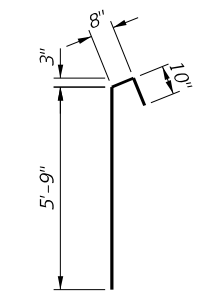
Bar	No.	Size	Length	Shape
d(E)	13	#6	5'-4"	
d1(E)	13	#6	5'-4"	
d2(E)	6	#6	5'-0"	
d3(E)	6	#6	5'-0"	
e(E)	9	#4	11'-7"	
h(E)	2	#4	11'-8"	
h1(E)	5	#4	18'-0"	
v(E)	12	#6	7'-0"	L
v1(E)	12	#6	6'-0"	
v2(E)	16	#4	5'-5"	
v3(E)	4	#4	5'-0"	
v4(E)	2	#5	7'-3"	
v5(E)	2	#4	5'-11"	
v6(E)	2	#4	3'-0"	
v7(E)	3	#4	6'-8"	



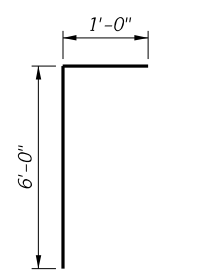
**BAR d(E), d2(E)**



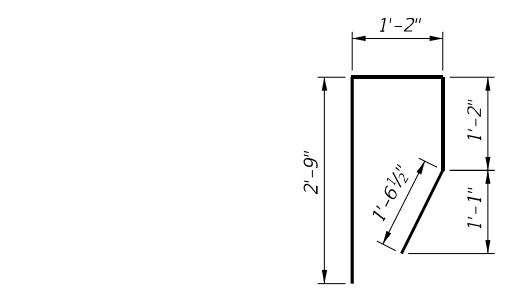
**BAR d1(E), d3(E)**



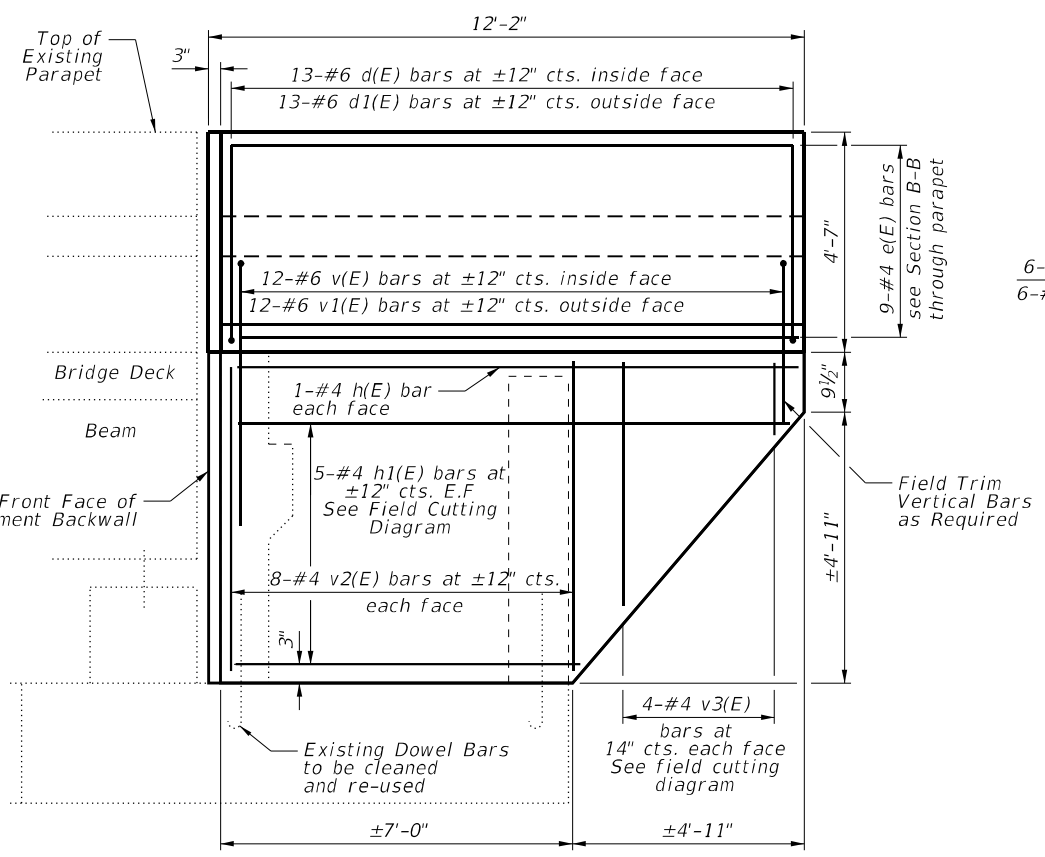
**BAR v4(E)**



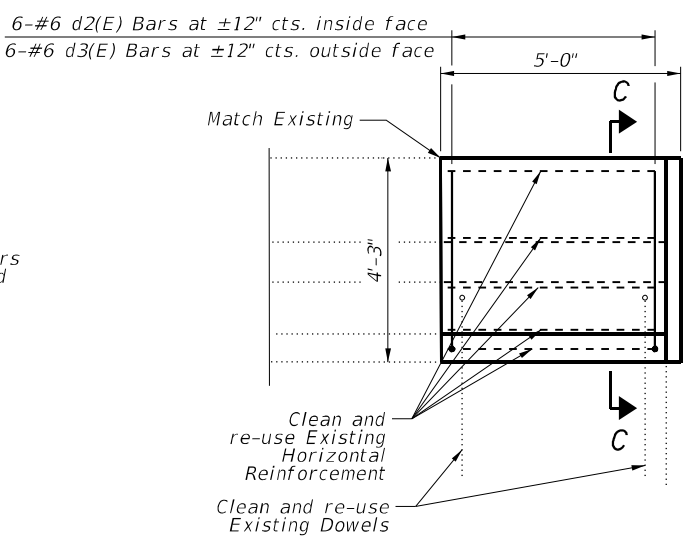
**BAR v(E)**



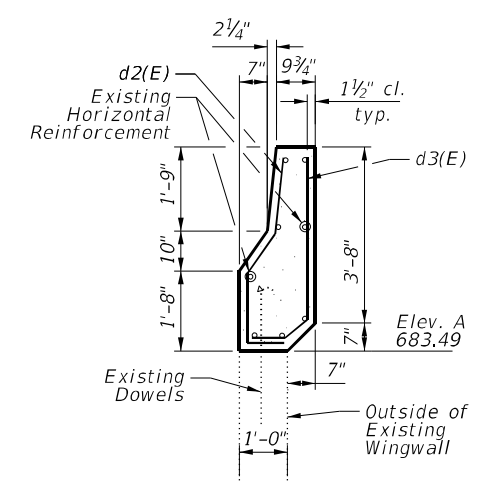
**BAR v7(E)**



**NORTHEAST WINGWALL OUTSIDE ELEVATION**



**OUTSIDE ELEVATION**



**SECTION C-C**

**NOTES:**

See Sheet 3 of 4 for Section B-B.

MODEL: Default; FILE NAME: I:\006\Work Order #21\CAD\_Sheets\62R64\_1290\0220015-62R64-003-REP.dwg



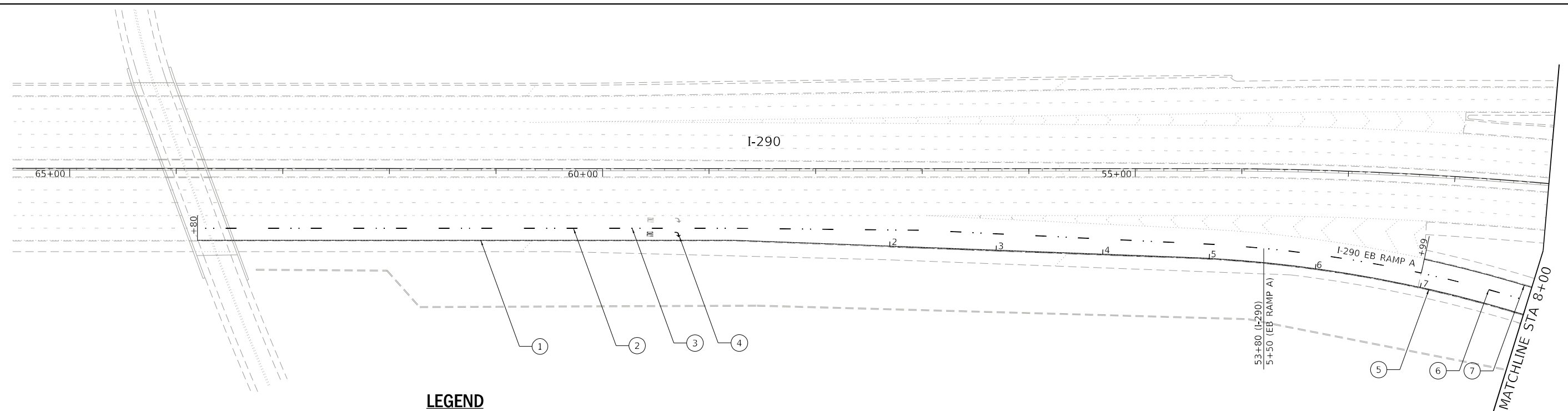
USER NAME = joang	DESIGNED - CMF	REVISED -
PLOT SCALE = 8,000.0' / in.	DRAWN - DMV	REVISED -
PLOT DATE = 5/9/2022	CHECKED - JMB	REVISED -
	DATE - 4/21/2022	REVISED -

**STATE OF ILLINOIS  
DEPARTMENT OF TRANSPORTATION**

**I-290 EB RAMP A TO US 20 OVER IL 64 (NORTH AVENUE)  
WINGWALL, PARAPET, & JOINT REPAIR DETAILS**

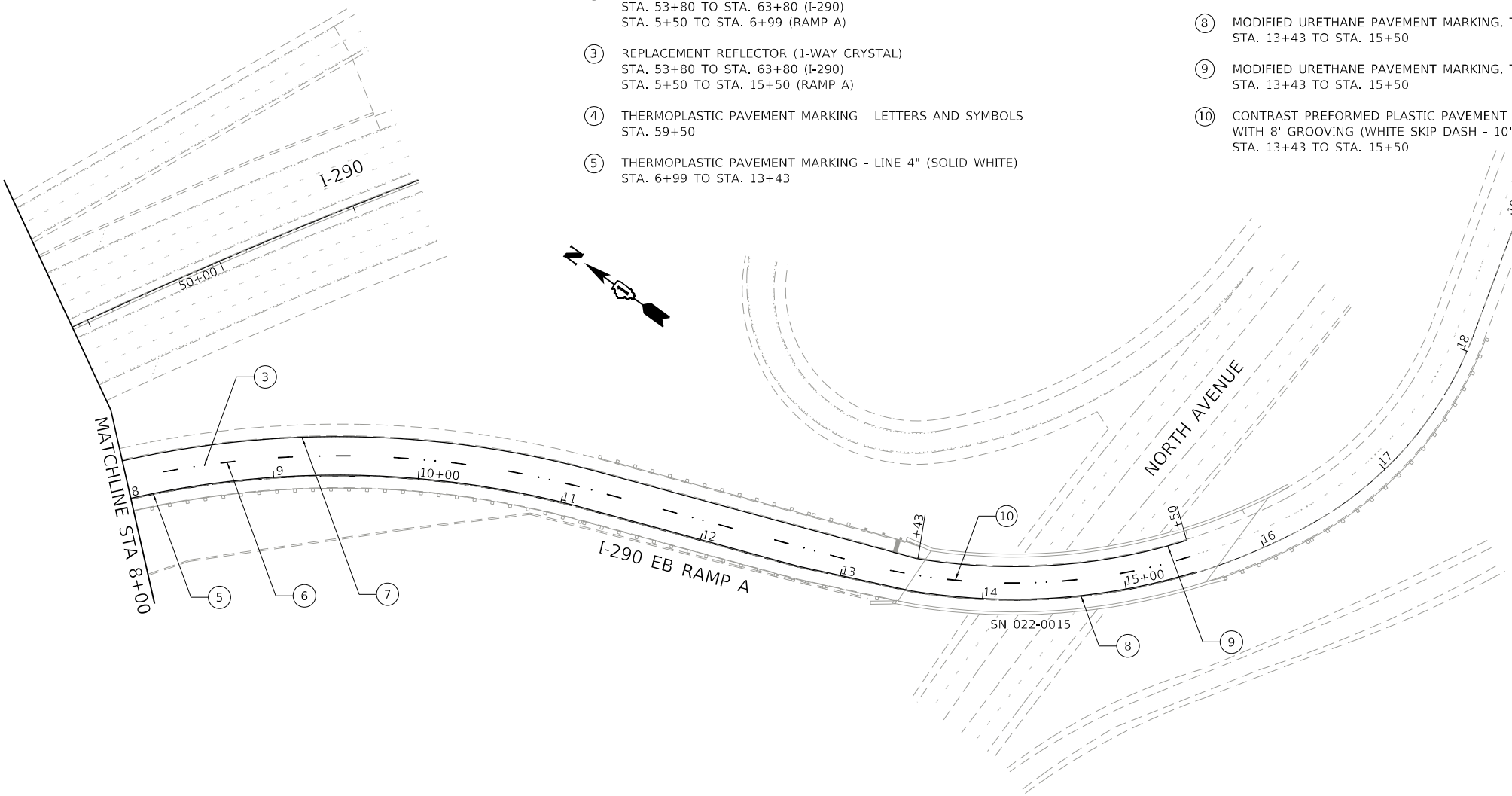
F.A.I. RTE.	SECTION	COUNTY	TOTAL SHEETS	SHEET NO.
290	FAI 290 22 WW	DUPAGE	23	13
	SN 022-0015	CONTRACT NO. 62R64		
	ILLINOIS	FED. AID PROJECT		

SCALE: SHEET 4 OF 4 SHEETS STA. TO STA.



**LEGEND**

- ① THERMOPLASTIC PAVEMENT MARKING - LINE 8" (SOLID WHITE)  
STA. 53+80 TO STA. 63+80 (I-290)  
STA. 5+50 TO STA. 6+99 (RAMP A)
- ② THERMOPLASTIC PAVEMENT MARKING - LINE 5" (WHITE SKIP DASH - 10', 30' SKIP)  
STA. 53+80 TO STA. 63+80 (I-290)  
STA. 5+50 TO STA. 6+99 (RAMP A)
- ③ REPLACEMENT REFLECTOR (1-WAY CRYSTAL)  
STA. 53+80 TO STA. 63+80 (I-290)  
STA. 5+50 TO STA. 15+50 (RAMP A)
- ④ THERMOPLASTIC PAVEMENT MARKING - LETTERS AND SYMBOLS  
STA. 59+50
- ⑤ THERMOPLASTIC PAVEMENT MARKING - LINE 4" (SOLID WHITE)  
STA. 6+99 TO STA. 13+43
- ⑥ THERMOPLASTIC PAVEMENT MARKING - LINE 4" (WHITE SKIP DASH - 10', 30' SKIP)  
STA. 6+99 TO STA. 13+43
- ⑦ THERMOPLASTIC PAVEMENT MARKING - LINE 4" (SOLID YELLOW)  
STA. 6+99 TO STA. 13+43
- ⑧ MODIFIED URETHANE PAVEMENT MARKING, TYPE II - LINE 4" (SOLID WHITE) (PCC PAVEMENT ONLY)  
STA. 13+43 TO STA. 15+50
- ⑨ MODIFIED URETHANE PAVEMENT MARKING, TYPE II - LINE 4" (SOLID YELLOW) (PCC PAVEMENT ONLY)  
STA. 13+43 TO STA. 15+50
- ⑩ CONTRAST PREFORMED PLASTIC PAVEMENT MARKING, TYPE B - LINE 7" WITH 8' GROOVING (WHITE SKIP DASH - 10', 30' SKIP)(PCC PAVEMENT ONLY)  
STA. 13+43 TO STA. 15+50



MODEL: D:\p\11  
FILE NAME: D:\2022\62R64\chastain.dwg

**CHASTAIN & ASSOCIATES LLC**  
CONSULTING ENGINEERS  
184-001397

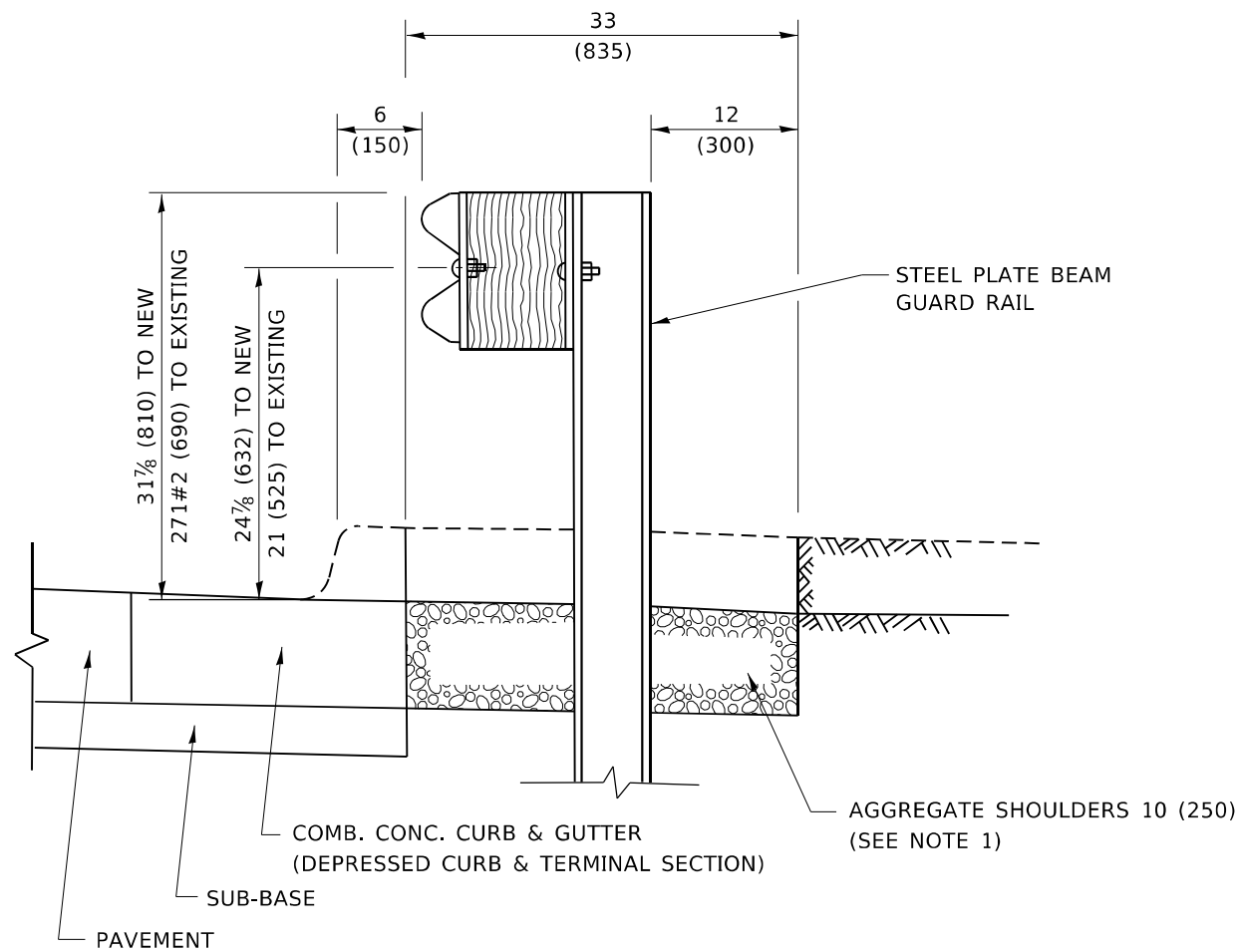
USER NAME = _USER_	DESIGNED - JKP	REVISED -
PLOT SCALE = 100,0000' / in.	DRAWN - DMW	REVISED -
PLOT DATE = 5/9/2022	CHECKED - SPF	REVISED -
	DATE - 5/9/2022	REVISED -

**STATE OF ILLINOIS  
DEPARTMENT OF TRANSPORTATION**

**I-290 EB RAMP A TO US 20 OVER IL 64 (NORTH AVENUE)  
PAVEMENT MARKING PLAN**

SCALE: 1"=50'    SHEET 1 OF 1 SHEETS    STA. 7+00 TO STA. 17+00

F.A.I. RTE.	SECTION	COUNTY	TOTAL SHEETS	SHEET NO.
290	FAI 290 22 WW	DUPAGE	23	14
ILLINOIS FED. AID PROJECT			CONTRACT NO. 62R64	

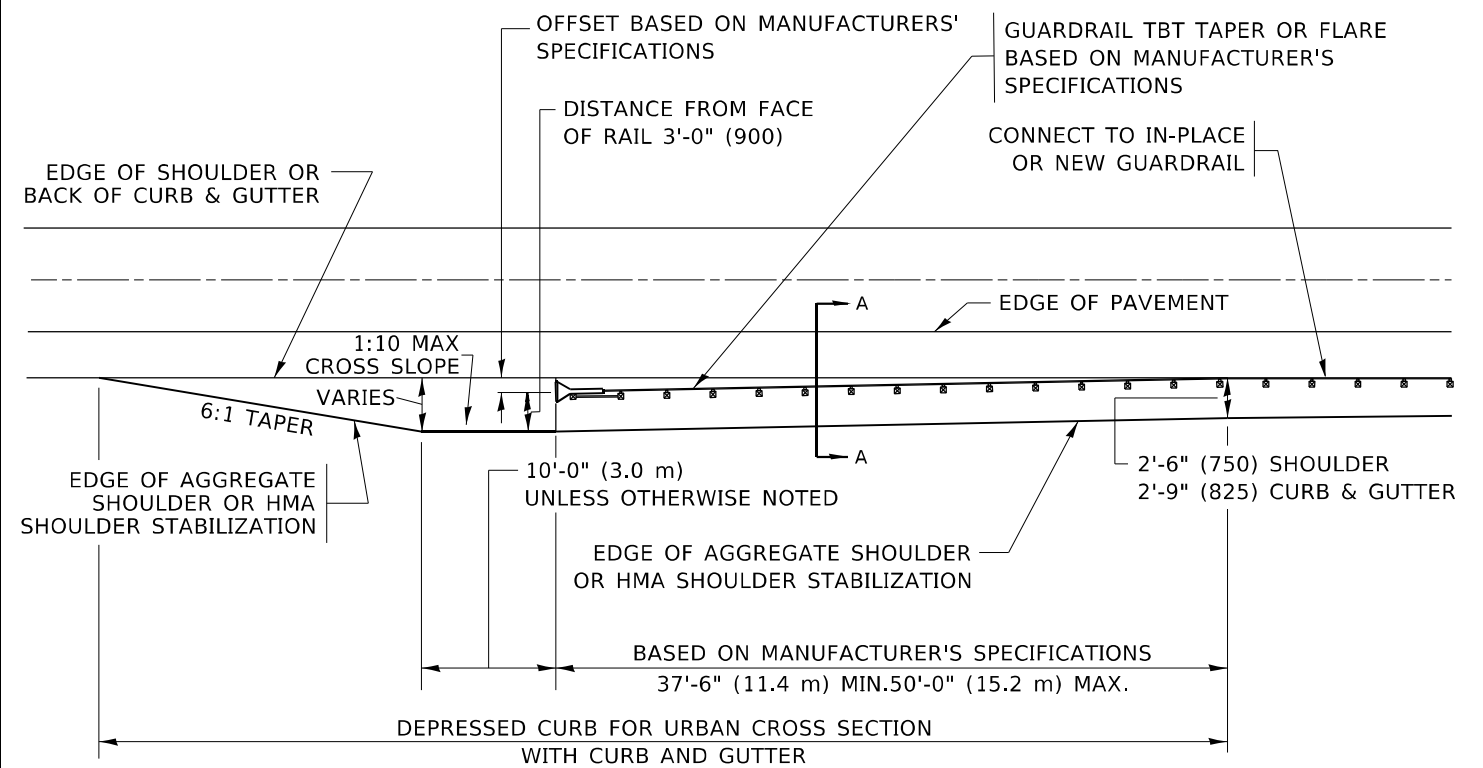


**SECTION A-A**

**NOTES:**

1. THE AGGREGATE SHOULDER, 10 (250) OR HMA SHOULDER, 6 (150) (IF REQUIRED) SHALL EXTEND UNDER THE TRAFFIC BARRIER TERMINAL.
2. "EXISTING" GUARDRAIL REFERS TO CONNECTING TERMINAL SECTION TO GUARD RAILING PRIOR TO THE MIDWEST GUARDRAIL SYSTEM.
3. THE CONTRACTOR SHALL VERIFY THE TYPE/HEIGHT OF GUARDRAIL IN-PLACE BEFORE ORDERING THE NEW TERMINAL SECTION. COST INCLUDED WITH THE COST OF THE TERMINAL. THE TERMINAL SECTION HEIGHT TO BE PLACED MUST MATCH THE HEIGHT OF THE IN-PLACE GUARDRAIL.

**DETAILS FOR STEEL PLATE BEAM  
GUARD RAIL ADJACENT TO CURB AND GUTTER  
[FOR ROADWAY SPEED 35 MPH (60 kmh) TO 45 MPH (70 kmh)]**



**DEPRESSED CURB AND GUTTER AND  
SHOULDER TREATMENT AT TBT TY. 1 SPL.**

AGGREGATE SHOULDER, 10 (250) WILL BE PAID ACCORDING TO SECTION 481.

HMA SHOULDERS 6 (150) (IF REQUIRED) WILL BE PAID ACCORDING TO SECTION 482.

COMB. CONC. C&G, STEEL PLATE BEAM GUARD RAIL AND TRAFFIC BARRIER TERMINAL, OF THE TYPE SPECIFIED WILL BE PAID FOR SEPARATELY.

TBT = TRAFFIC BARRIER TERMINAL  
ALL DIMENSIONS ARE IN INCHES (MILLIMETERS)  
UNLESS OTHERWISE SHOWN.

MODEL: Default  
FILE NAME: p:\project-pw-beachy.com\p\INDOT\Documents\DOT Office\Dir\rdet\_1\Project\11290\_581\_Exit\_Ramp\CADD\data\Drawings\Bd600.dgn

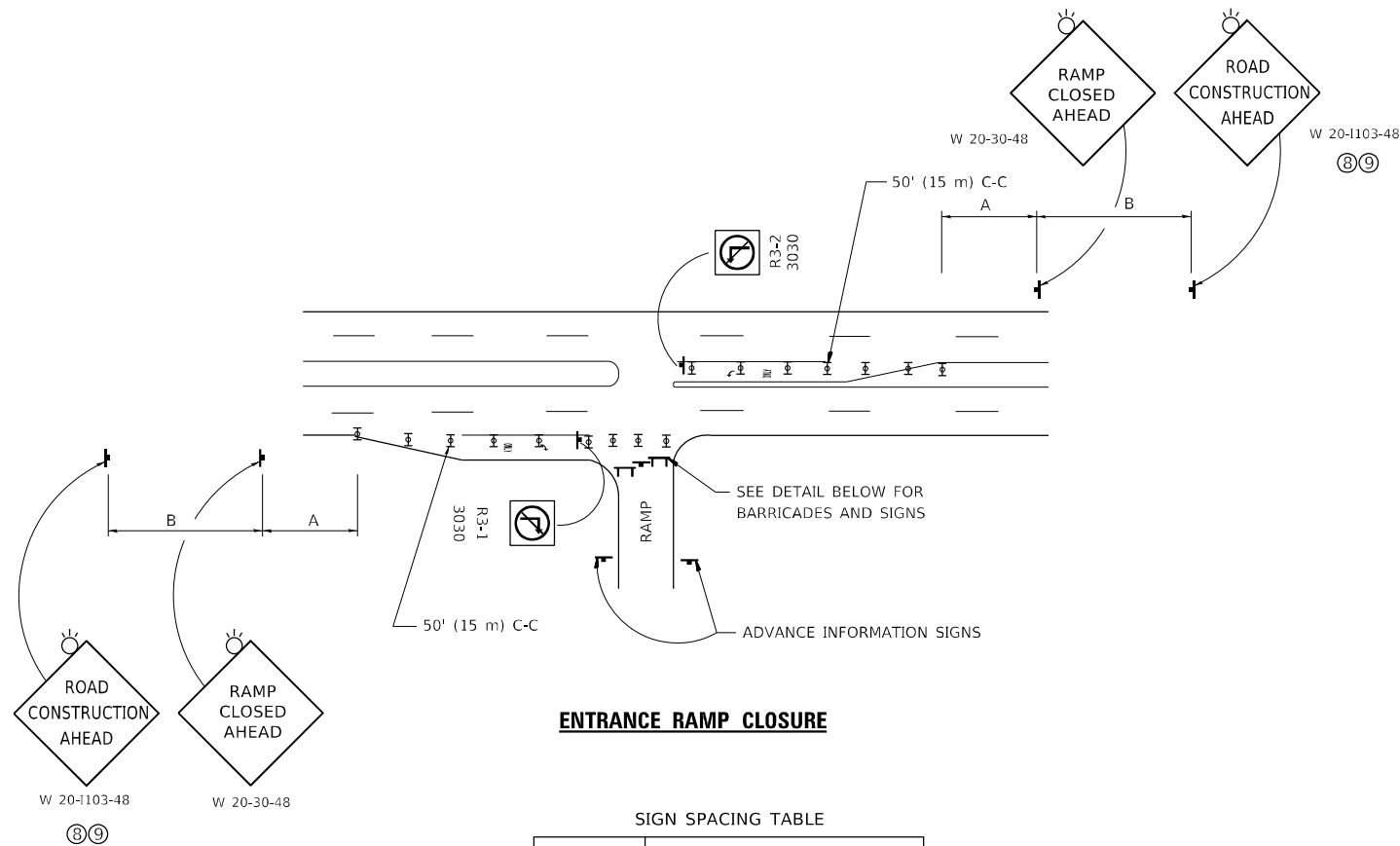
USER NAME = hassan	DESIGNED - M. DE YONG	REVISED - R. BORO 12-08-2008
	DRAWN -	REVISED - R. BORO 09-14-2009
PLOT SCALE = 100,0000' / in.	CHECKED -	REVISED - R. BORO 08-06-2012
PLOT DATE = 5/10/2022	DATE - 09-22-90	REVISED - R. BORO 05-08-2015

**STATE OF ILLINOIS  
DEPARTMENT OF TRANSPORTATION**

**DETAILS FOR DEPRESSED CURB & GUTTER AND  
SHOULDER TREATMENT AT TBT TY. 1 SPL.**

SCALE: NONE SHEET 1 OF 1 SHEETS STA. TO STA.

F.A.I. RTE.	SECTION	COUNTY	TOTAL SHEETS	SHEET NO.
290	FAI 290 22 WW	DUPAGE	23	15
<b>BD600-10 (BD 34)</b>		CONTRACT NO. 62R64		
ILLINOIS FED. AID PROJECT				

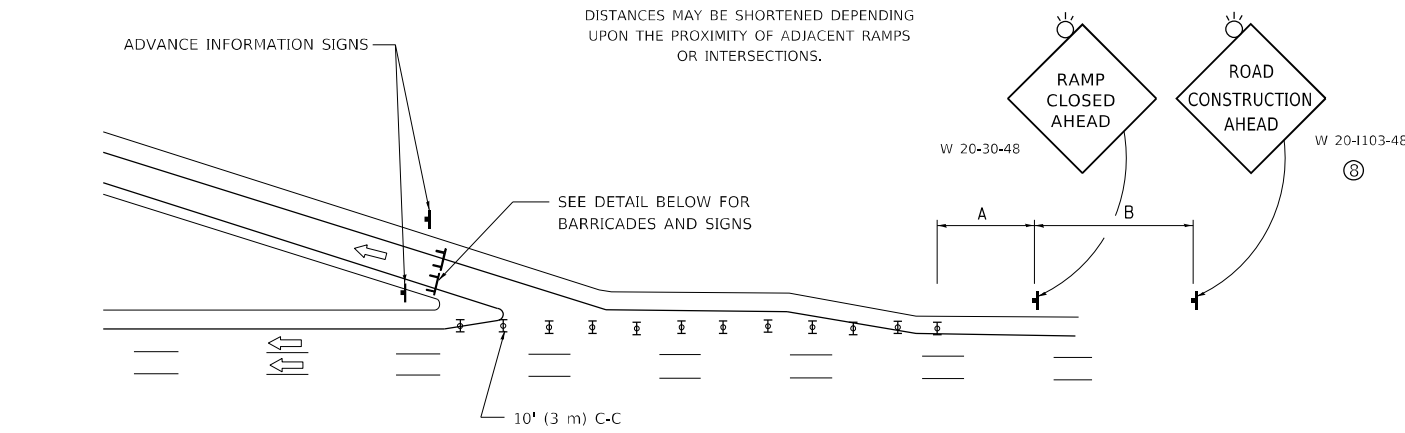


**ENTRANCE RAMP CLOSURE**

SIGN SPACING TABLE

FACILITY	DISTANCE BETWEEN SIGNS	
	A	B
EXPRESSWAY >24 HOURS	1000' (300 m)	1500' (450 m)
EXPRESSWAY ≤24 HOURS	500' (150 m)	500' (150 m)
ARTERIAL 55 MPH	500' (150 m)	500' (150 m)
ARTERIAL 50-45 MPH	350' (100 m)	350' (100 m)
ARTERIAL <45 MPH	200' (60 m)	200' (60 m)

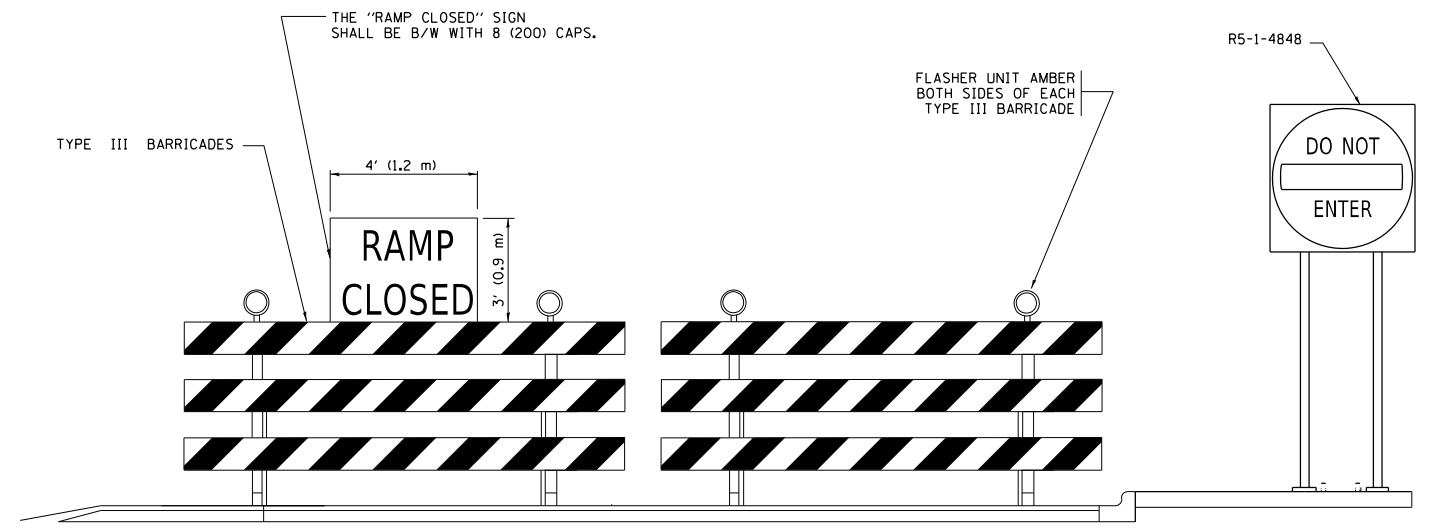
DISTANCES MAY BE SHORTENED DEPENDING UPON THE PROXIMITY OF ADJACENT RAMPS OR INTERSECTIONS.



**EXIT RAMP CLOSURE**

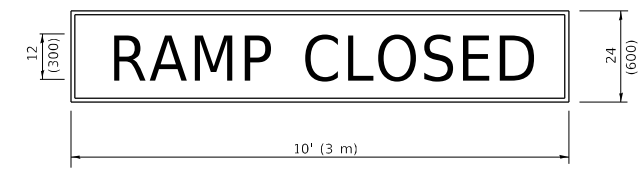
**SYMBOLS**

- ▬ TYPE II BARRICADE OR DRUM
- ⌈ TYPE III BARRICADE WITH 2 FLASHING LIGHTS



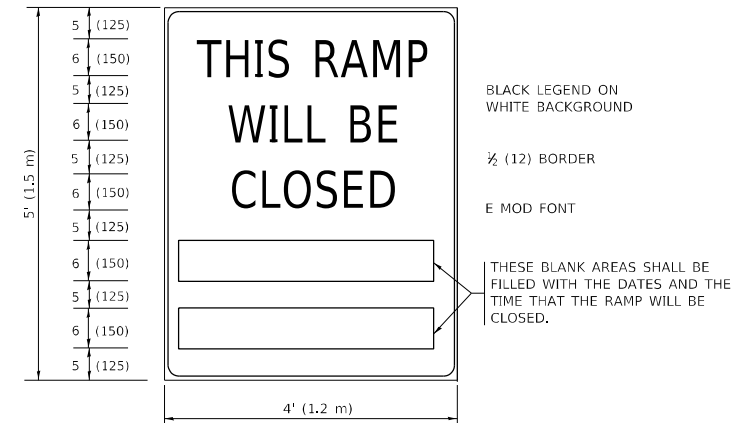
**DETAIL FOR REQUIRED BARRICADES & SIGNS**

**RAMP CLOSURE ADVANCE WARNING SIGN**



BLACK LEGEND ON ORANGE BACKGROUND MOUNTED DIAGONALLY  
E MOD FONT  
1 (25) BORDER  
THESE SIGNS ARE REQUIRED ON ALL THE EXIT GUIDE SIGNS FOR EXIT RAMPS THAT WILL BE CLOSED FOR MORE THAN FOUR (4) CONSECUTIVE DAYS.

**RAMP CLOSURE ADVANCE INFORMATION SIGN**



THESE SIGNS ARE REQUIRED ON BOTH SIDES OF THE RAMP, MINIMUM OF 1 WEEK IN ADVANCE OF THE CLOSURE.  
THESE SIGNS SHALL BE FABRICATED AND PAID FOR ACCORDING TO THE TEMPORARY INFORMATION SIGNING SPECIAL PROVISION

**GENERAL NOTES:**

- ① CONES MAY BE SUBSTITUTED FOR DRUMS OR TYPE II BARRICADES DURING DAY OPERATIONS. CONES SHALL BE A MINIMUM OF 28 (700) HIGH.
- ② VERTICAL BARRICADES SHALL NOT BE USED FOR RAMP CLOSURES.
- ③ A FLAGGER SHALL BE POSITIONED AT EACH CLOSED RAMP THAT IS OPEN TO CONSTRUCTION VEHICLES, PRECEDED BY A W20-7 FLAGGER WARNING SIGN.
- ④ ALL ROUTE MARKERS AND TRAILBLAZER ASSEMBLIES WHICH DIRECT MOTORISTS TO A CLOSED ENTRANCE RAMP SHALL BE COVERED WHEN THE RAMP IS CLOSED FOR MORE THAN FOUR (4) DAYS.
- ⑤ THE SIGNING AND BARRICADING WHICH IS REQUIRED BY THIS DETAIL SHALL BE INCLUDED IN THE COST OF TRAFFIC CONTROL AND PROTECTION (EXPRESSWAYS).
- ⑥ AUTHORIZATION FROM THE DISTRICT'S BUREAU OF TRAFFIC IS REQUIRED FOR ALL RAMP CLOSURES.
- ⑦ THE RAMP CLOSURE ADVANCE INFORMATION SIGNS SHALL BE ERECTED IF THE CLOSURE TIME EXCEEDS TWENTY-FOUR (24) HOURS. ADDITIONAL ADVANCE WARNING SIGNS ON EXIT GUIDE SIGNING WILL BE REQUIRED FOR EXIT RAMP CLOSURES THAT EXCEED FOUR (4) DAYS IN LENGTH
- ⑧ ROAD CONSTRUCTION AHEAD SIGNS MAY BE OMITTED WHEN THIS DETAIL IS USED IN CONJUNCTION WITH OTHER TRAFFIC CONTROL THAT ALREADY INCLUDES A ROAD CONSTRUCTION AHEAD SIGN.
- ⑨ ARTERIAL ROAD CONSTRUCTION AHEAD SIGNS SHALL BE INSTALLED ON THE LEFT SIDE OF TRAFFIC IF THE MEDIAN IS MORE THAN 10 FT WIDE.

ALL DIMENSIONS ARE IN INCHES (MILLIMETERS) UNLESS OTHERWISE SHOWN.

MODEL: Default  
FILE: \\nafe\p\project\paw\benefit\com\PIV\DOT\Documents\DOT\Office\Director\11\project\290\_58\Exit\_Ramp\CADD\data\Drawn\BdfSc.dgn

USER NAME = hassan	DESIGNED - D.W.S.	REVISED - S.P.B._01-07
DRAWN -	REVISED - S.P.B._12-09	
PLOT SCALE = 100,0000' / in.	CHECKED -	REVISED - M.D._06-13
PLOT DATE = 5/10/2022	DATE - 02-83	REVISED - M.D._01-18

**STATE OF ILLINOIS  
DEPARTMENT OF TRANSPORTATION**

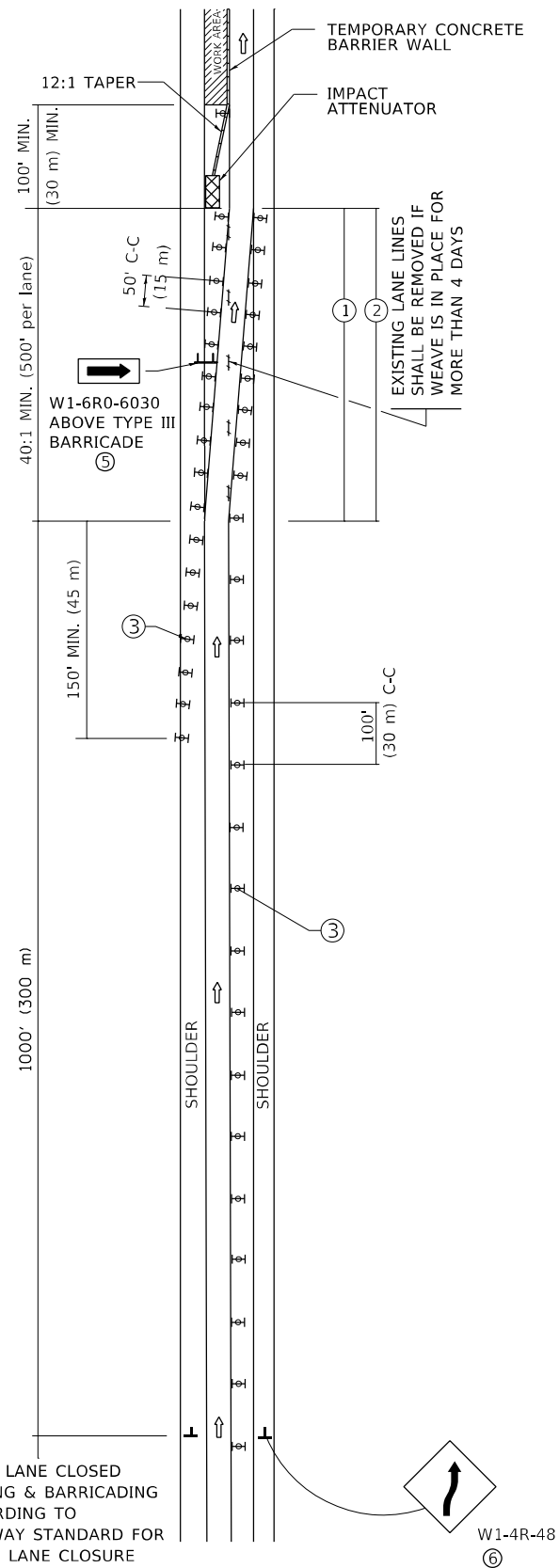
**ENTRANCE\_AND\_EXIT\_RAMP  
CLOSURE\_DETAILS**

SCALE: NONE SHEET 1 OF 1 SHEETS STA. TO STA.

F.A.I. RTE.	SECTION	COUNTY	TOTAL SHEETS	SHEET NO.
290	FAI 290 22 WW	DUPAGE	23	16
TC-08		CONTRACT NO. 62R64		
ILLINOIS		FED. AID PROJECT		

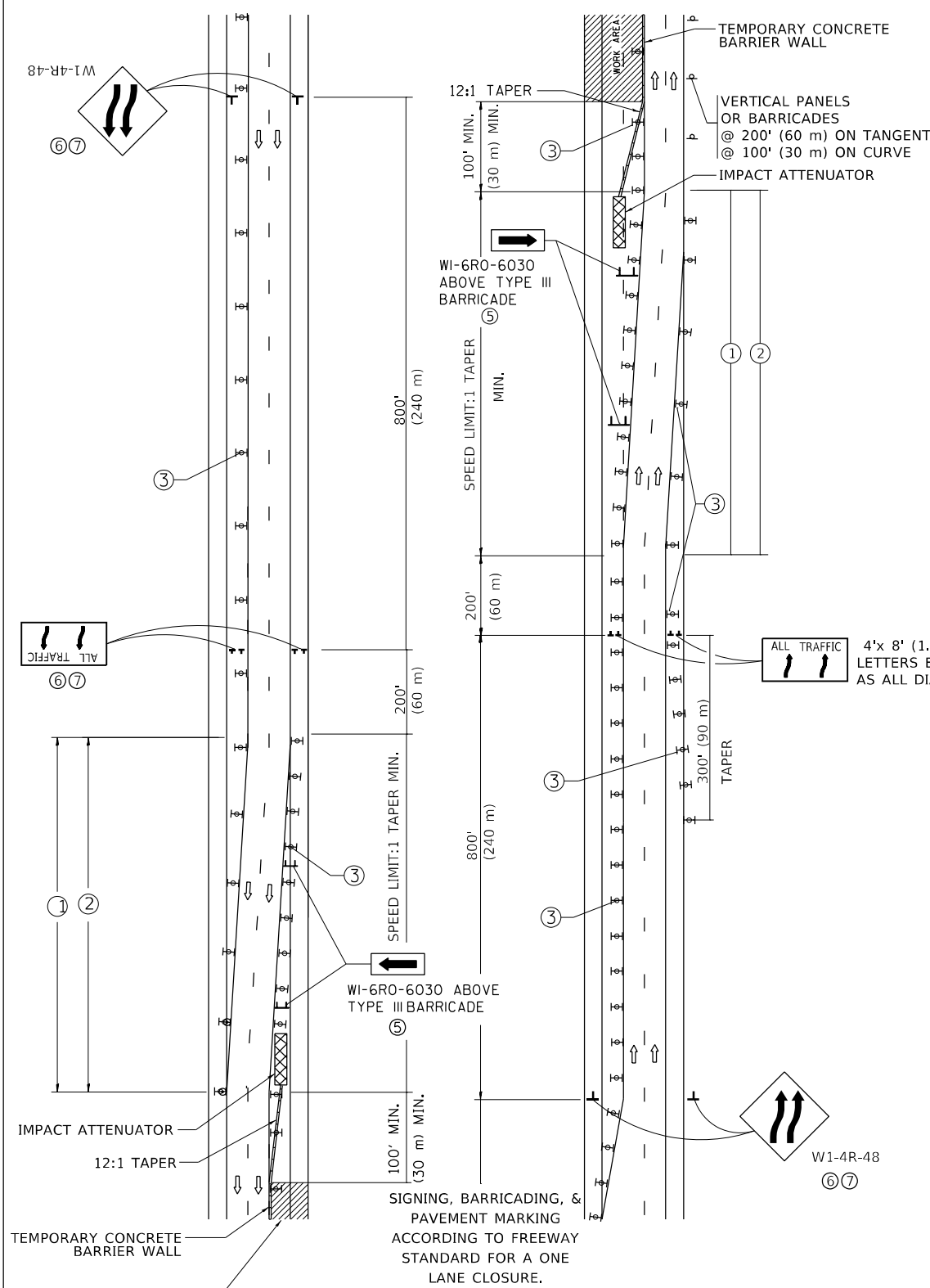


# SINGLE LANE WEAVE



RIGHT LANE CLOSED SIGNING & BARRICADING ACCORDING TO FREEWAY STANDARD FOR A ONE LANE CLOSURE

# MULTI-LANE WEAVE



### GENERAL NOTES:

- ① EXISTING CONFLICTING PAVEMENT MARKING LINES SHALL BE REMOVED. PAVEMENT MARKING REMOVAL SHALL NOT BE REQUIRED FOR SINGLE LANE WEAVES UNDER 4 DAYS IN DURATION.
- ② CONTINUOUS REFLECTIVE TEMPORARY PAVEMENT MARKING TAPE SHALL BE PLACED THROUGHOUT THE TAPER AND FOR 300' (90 m) ALONG SIDE THE WORK AREA WHERE THE CLOSURE TIME IS GREATER THAN FOURTEEN DAYS. THE LEFT EDGE LINE SHALL BE YELLOW AND THE RIGHT EDGE LINE SHALL BE WHITE. FOR MULTI-LANE WEAVES LANE LINES SHALL BE 5 INCH, 10'-30' (3 m-9 m) SKIP DASH, WHITE.
- ③ PLASTIC DRUMS WITH STEADY BURN LIGHTS AT 50' (15 m) C-C SPACING IN TAPERS AND 100' (30 m) C-C SPACING IN TANGENTS.
- ④ ALL SIGNS SHALL BE POST MOUNTED IF THE CLOSURE TIME EXCEEDS FOUR DAYS.
- ⑤ TYPE III BARRICADES MAY BE OMITTED FOR SINGLE-LANE WEAVES UNDER 24-HOURS IN DURATION. W1-6 SIGNS WILL STILL BE REQUIRED. IF THE WIDTH OF OFFSET IS LESS THAN 6' THEN THE TYPE III BARRICADE WITH ATTACHED ARROW SIGN PANEL CAN BE ELIMINATED IN THE TAPER AREAS.
- ⑥ WHEN THE LENGTH OF THE SHIFTED SEGMENT (DISTANCE BETWEEN WEAVE POINTS) IS LESS THAN 1500', DOUBLE REVERSE CURVE SIGNS (W24-1) SHOULD BE USED INSTEAD OF THE REVERSE CURVE (W1-4) SIGNS. ARROWS ON THE 4'X8' "ALL TRAFFIC" SIGNS SHALL BE THE SAME SHAPE.
- ⑦ THE NUMBER OF ARROWS ON THESE SIGNS SHALL MATCH THE NUMBER OF LANES OPEN TO TRAFFIC.

### SYMBOLS

- DIRECTION OF TRAFFIC
- WORK AREA
- SIGN ON PORTABLE OR PERMANENT SUPPORT
- TYPE II BARRICADE OR DRUM WITH MONO-DIRECTIONAL STEADY BURNING LIGHT
- TEMPORARY CONCRETE BARRIER WALL
- IMPACT ATTENUATOR
- W1-4R-48
- W24-1-48

ALL DIMENSIONS ARE IN INCHES (MILLIMETERS) UNLESS OTHERWISE SHOWN

MODEL: Default  
FILE NAME: p:\pilot\pilot\pilot.dwg  
PROJECT: 290 USE Exit Ramp\CAD\Drawings\Drawings\Drawings.dwg

USER NAME = hassan	DESIGNED - D.W.S.	REVISED - J.A.F. 02-06
	DRAWN -	REVISED - S.P.B. 01-07
PLOT SCALE = 100,0000' / in.	CHECKED -	REVISED - S.P.B. 12-09
PLOT DATE = 5/10/2022	DATE - 02-87	REVISED - M.D. 06-13

STATE OF ILLINOIS  
DEPARTMENT OF TRANSPORTATION

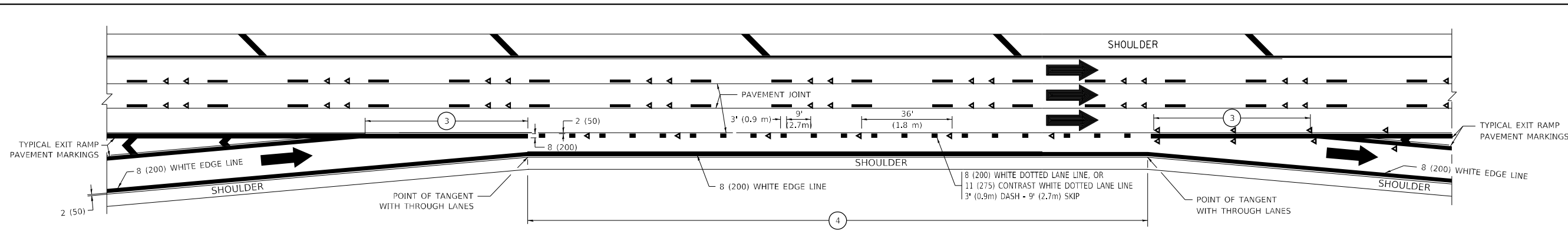
TRAFFIC CONTROL DETAILS FOR  
FREEWAY SINGLE & MULTI-LANE WEAVE

SCALE: NONE SHEET 1 OF 1 SHEETS STA. TO STA.

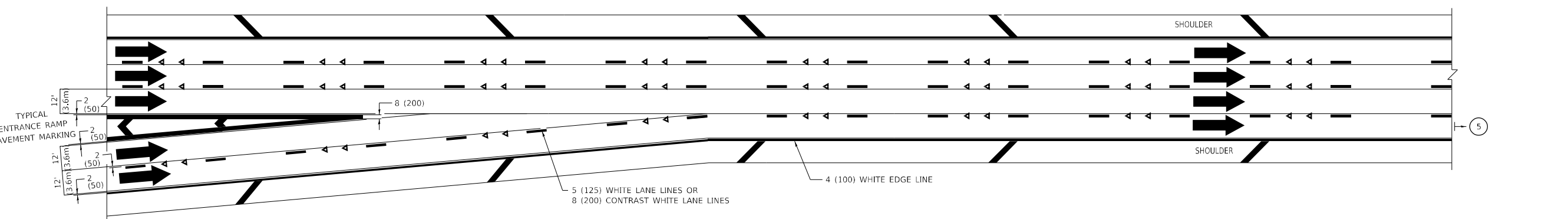
F.A.I. RTE.	SECTION	COUNTY	TOTAL SHEETS	SHEET NO.
290	FAI 290 22 WW	DUPAGE	23	17
TC-09		CONTRACT NO. 62R64		
ILLINOIS FED. AID PROJECT				



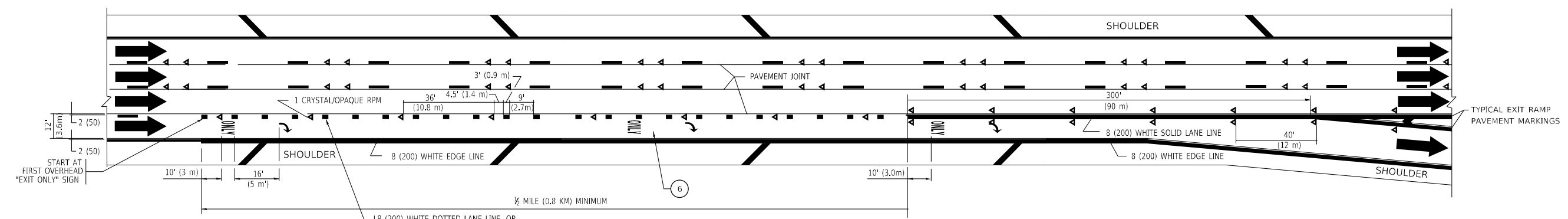




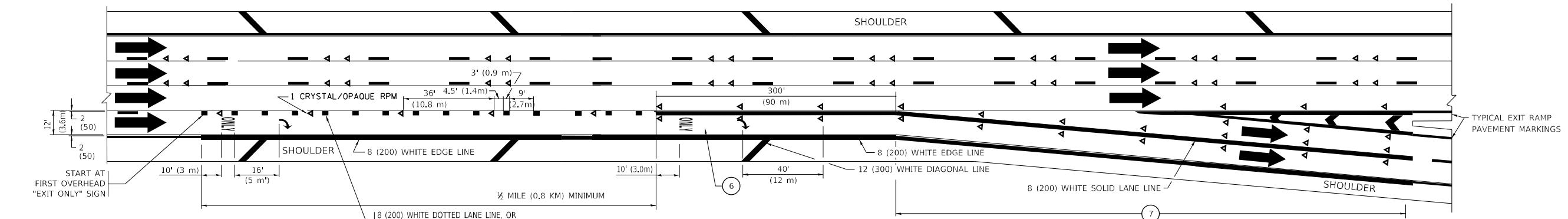
**AUXILIARY LANE MARKINGS**



**TWO LANE ENTRANCE RAMP WITH MERGE MARKINGS**



**EXIT ONLY LANE MARKINGS**



**EXIT ONLY WITH OPTION LANE MARKINGS**

- NOTES:**
- 3 OMIT WHEN LENGTH OF AUXILIARY LANE IS LESS THAN 500' (150 m).
  - 4 8-INCH WIDE DOTTED LANE LINE MARKINGS SHALL BE USED WHEN THE LENGTH OF THE AUXILIARY LANE IS 2 MILES OR LESS.
  - 5 FOR TWO-LANE ENTRANCE RAMP, IF RIGHT LANE ENDS, USE TYPICAL ENTRANCE RAMP PAVEMENT MARKINGS.
  - 6 ONLY AND ARROWS EQUALLY SPACED, 500' (150 m) MAXIMUM SPACING. FULL SIZE LETTERS AND ARROW SHALL BE USED.
  - 7 CONTINUE 8" SOLID LANE LINE THROUGH EXIT TO END OF PAVED GORE.

MODEL: Default  
 FILE: Multi-Lane-Freeway-Pavement-Markings-Details.dwg  
 PROJECT: I-290 (SE Exit Ramp) CAD Data (D:\Projects\I-290 (SE Exit Ramp)\CAD Data)\Dwg\MP\Multi-Lane-Freeway-Pavement-Markings-Details.dwg  
 PLOT DATE: 5/10/2022

USER NAME = hassan	DESIGNED - D.W.S.	REVISED - J.A.F. 02-06
	DRAWN -	REVISED - S.P.B. 01-07
PLOT SCALE = 100,0000' / in.	CHECKED -	REVISED - S.P.B. 01-10
PLOT DATE = 5/10/2022	DATE - 01-90	REVISED - M.D. 09-17

**STATE OF ILLINOIS  
DEPARTMENT OF TRANSPORTATION**

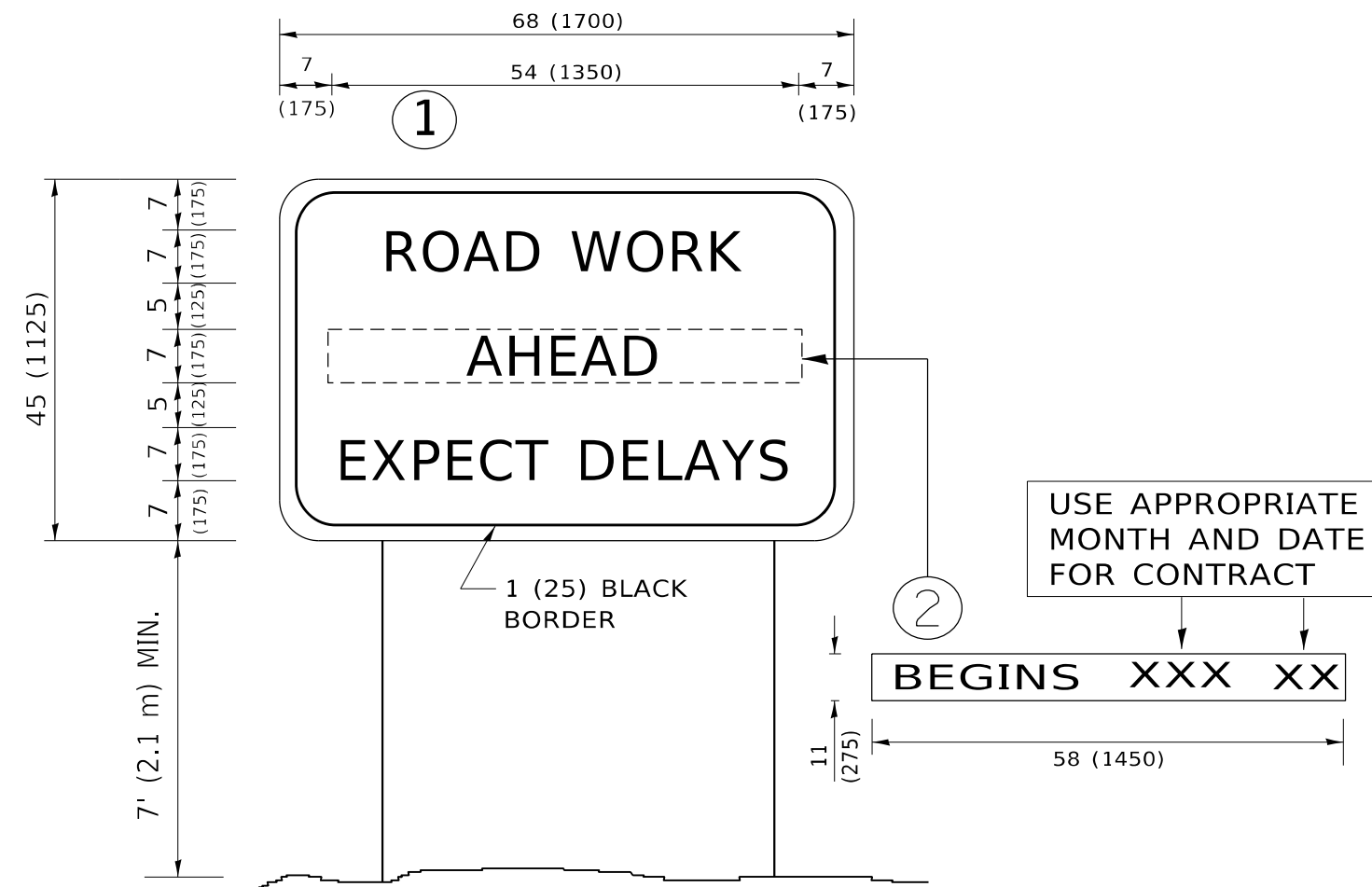
**MULTI-LANE FREEWAY  
PAVEMENT MARKING DETAILS**

SCALE: NONE SHEET 2 OF 2 SHEETS STA. TO STA.

F.A.I. RTE.	SECTION	COUNTY	TOTAL SHEETS	SHEET NO.
290	FAI 290 22 WW	DUPAGE	23	20
<b>TC-12</b>		CONTRACT NO. 62R64		
ILLINOIS FED. AID PROJECT				







**NOTES:**

1. USE BLACK LETTERING ON ORANGE BACKGROUND.
2. ERECT SIGNS IN ADVANCE OF THE LOCATION FOR THE "ROAD CONSTRUCTION AHEAD" SIGN AT LOCATIONS AS DIRECTED BY THE ENGINEER.
3. ERECT SIGN ① WITH INSTALLED PANEL ② ONE WEEK PRIOR TO THE START OF CONSTRUCTION.
4. REMOVE PANEL ② SOON AFTER THE START OF CONSTRUCTION.
5. SEE SPECIAL PROVISION FOR "TEMPORARY INFORMATION SIGNING" FOR ADDITIONAL INFORMATION.
6. ONE SIGN ASSEMBLY EQUALS 25.70 SQ. FT. (2.3 SQ. M.)
7. SHALL BE PAID FOR AS TEMPORARY INFORMATION SIGNING.

ALL DIMENSIONS ARE IN INCHES (MILLIMETERS) UNLESS OTHERWISE SHOWN.

MODEL: Default  
 FILE: \\na11e1-pw\build\paw-beach\paw.com\PIV\DOT\Documents\DOT\Office\District\_1\Project\290\_581\_Exit\_Ramp\CAD\Drawings\Drawings\Bldg\Sign.dgn

USER NAME = hassan	DESIGNED -	REVISED - R. MIRS 09-15-97
	DRAWN -	REVISED - R. MIRS 12-11-97
PLOT SCALE = 100,0000 ' / in.	CHECKED -	REVISED - T. RAMMACHER 02-02-99
PLOT DATE = 5/10/2022	DATE -	REVISED - C. JUCIUS 01-31-07

**STATE OF ILLINOIS  
DEPARTMENT OF TRANSPORTATION**

<b>ARTERIAL ROAD INFORMATION SIGN</b>			
SCALE: NONE	SHEET 1	OF 1 SHEETS	STA. TO STA.

F.A.I. RTE.	SECTION	COUNTY	TOTAL SHEETS	SHEET NO.
290	FAI 290 22 WW	DUPAGE	23	23
<b>TC-22</b>		CONTRACT NO. 62R64		
ILLINOIS FED. AID PROJECT				