

F.A.P. RTE.	SECTION	COUNTY	TOTAL SHEETS	SHEET NO.
876	2021-050-CJS	COOK & WILL	23	1
		ILLINOIS	CONTRACT NO. 62N48	

STATE OF ILLINOIS  
DEPARTMENT OF TRANSPORTATION

**PROPOSED  
HIGHWAY PLANS**

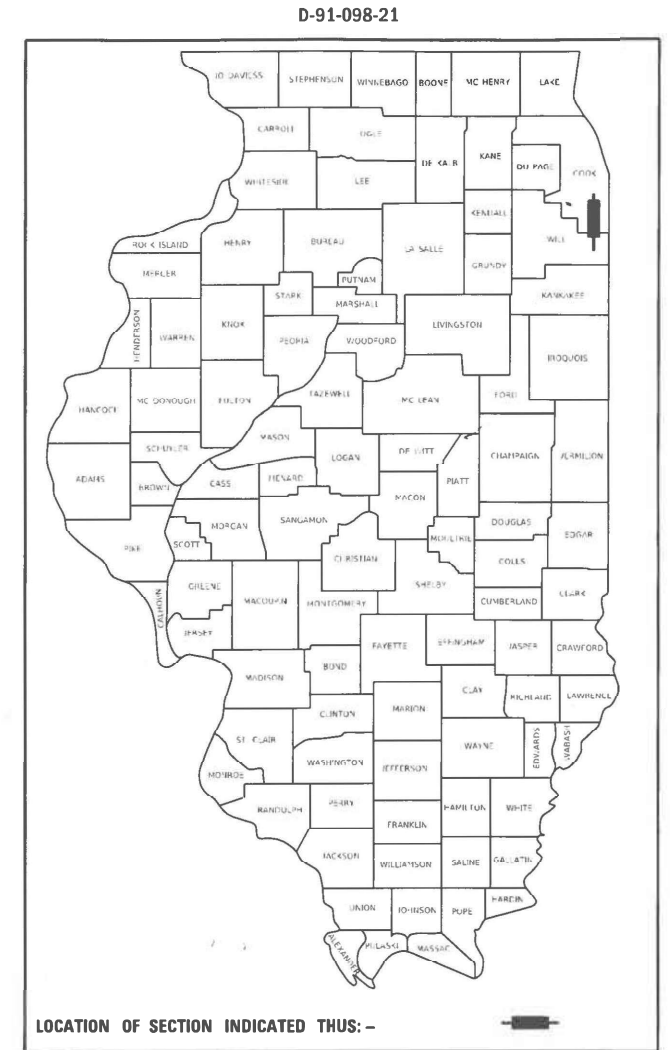
FAP ROUTE 876: IL 1 (CHICAGO RD, HALSTED ST)  
STRIEFF LN TO SCREMENTI LN  
SECTION: 2021-050-CJS  
CRACK AND JOINT SEALING  
COOK & WILL COUNTY

FOR INDEX OF SHEETS AND HIGHWAY STANDARDS, SEE SHEET NO. 2

THIS PROJECT IS LOCATED IN THE CITY OF CHICAGO HEIGHTS AND THE VILLAGES OF GLENWOOD, HOMEWOOD, SOUTH CHICAGO HEIGHTS, STEGER.

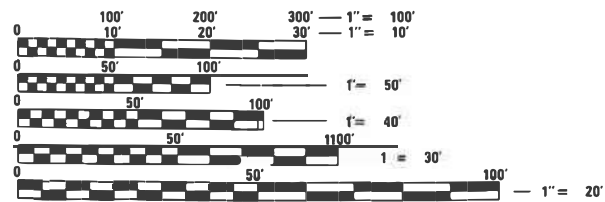
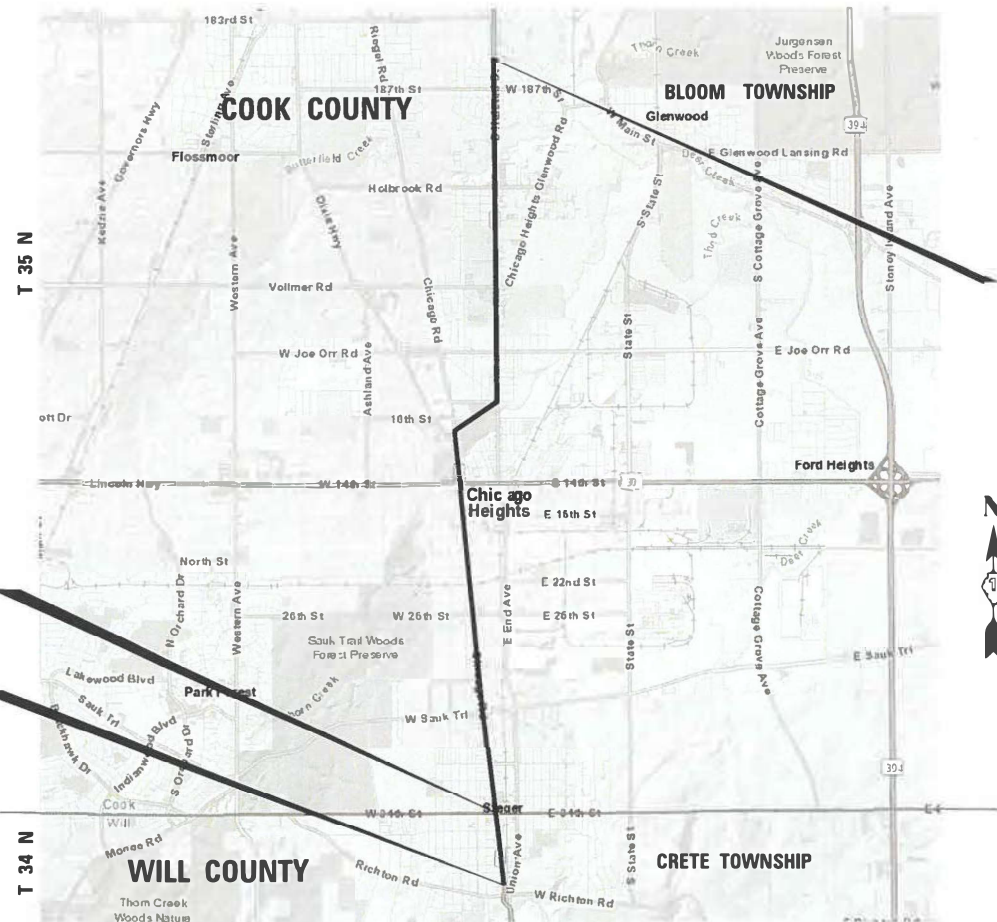
**TRAFFIC DATA**

2021 ADT = 5,350 - 35,200 VPD  
POSTED SPEED LIMIT = 30 MPH - 45 MPH



C-91-121-21

R 14 E



FULL SIZE PLANS HAVE BEEN PREPARED USING STANDARD ENGINEERING SCALES. REDUCED SIZED PLANS WILL NOT CONFORM TO STANDARD SCALES. IN MAKING MEASUREMENTS ON REDUCED PLANS, THE ABOVE SCALES MAY BE USED.

J.U.L.I.E.  
JOINT UTILITY LOCATION INFORMATION FOR EXCAVATION  
1-800-892-0123  
OR 811

PROJECT ENGINEER: LUKASZ POCIECHA (847) 705-4255  
PROJECT MANAGER: FAWAD AQUEEL (847) 705-4247

CONTRACT NO. 62N48

	WILL COUNTY	COOK COUNTY	OVERALL
GROSS LENGTH	2,908 FT. = 0.55 MILE	31,275 FT. = 5.92 MILE	34,183 FT. = 6.47 MILE
NET LENGTH	2,908 FT. = 0.55 MILE	31,047 FT. = 5.88 MILE	33,955 FT. = 6.43 MILE

LICENSED PROFESSIONAL ENGINEER  
ALEXANDER CARL LANE, P.E.  
IL LIC. NO. 062-063261  
EXP: 11/30/2023  
DATE: 4/29/2022

STATE OF ILLINOIS  
DEPARTMENT OF TRANSPORTATION

SUBMITTED: MAY 10 2022  
Jose Rios LCS  
REGIONAL ENGINEER

June 10, 2022  
Steph M. A. Etk  
ENGINEER OF DESIGN AND ENVIRONMENT

June 10, 2022  
Steph M. A. Etk  
DIRECTOR OF HIGHWAYS PROJECT IMPLEMENTATION

INFRASTRUCTURE ENGINEERING | INCORPORATED  
1 South Wacker | Suite 2650 | Chicago, IL 60606  
P 312.425.9560 | F 312.425.9564 | www.infrastructure-eng.com

CONTACT: ALEXANDER LANE (312) 477-0620

PRINTED BY THE AUTHORITY OF THE STATE OF ILLINOIS

# INDEX OF SHEETS

SHEET NO.	TITLE
1	COVER SHEET
2	INDEX OF SHEETS, STATE STANDARDS AND GENERAL NOTES
3	SUMMARY OF QUANTITIES
4-15	PROPOSED ROADWAY AND PAVEMENT MARKING PLANS
16	CRACK AND JOINT SEALING DETAIL (PD-11)
17	TRAFFIC CONTROL AND PROTECTION FOR SIDE ROADS, INTERSECTIONS, AND DRIVEWAYS (TC-10)
18	TYPICAL PAVEMENT MARKINGS (TC-13)
19	TRAFFIC CONTROL AND PROTECTION AT TURN BAYS (TO REMAIN OPEN TO TRAFFIC) (TC-14)
20	ARTERIAL ROAD INFORMATION SIGN (TC-22)
21-22	TYPICAL SUPPLEMENTAL SIGNING AND PAVEMENT MARKING TREATMENT FOR RAILROAD CROSSINGS (TC-23)
23	DRIVEWAY ENTRANCE SIGNING (TC-26)

# STATE STANDARDS

STANDARD NO.	DRAWING NAME
000001-08	STANDARD SYMBOLS, ABBREVIATIONS AND PATTERNS
701006-05	OFF-RD OPERATIONS, 2L, 2W, 15' (4.5 m) TO 24" (600 mm) FROM PAVEMENT EDGE
701011-04	OFF-RD MOVING OPERATIONS, 2L, 2W, DAY ONLY
701101-05	OFF-RD OPERATIONS, MULTILANE, 15' (4.5 M) TO 24" (600 MM) FROM PAVEMENT EDGE
701301-04	LANE CLOSURE, 2L, 2W, SHORT TIME OPERATIONS
701311-03	LANE CLOSURE 2L, 2W MOVING OPERATIONS-DAY ONLY
701426-09	LANE CLOSURE, 2L, 2W, MULTILANE, INTERMITTENT OR MOVING OPER., FOR SPEED ≥ 45 MPH TO 55 MPH
701501-06	URBAN LANE CLOSURE, 2L, 2W, UNDIVIDED
701502-09	URBAN LANE CLOSURE, 2L, 2W, WITH BIDIRECTIONAL LEFT TURN LANE
701601-09	URBAN LANE CLOSURE, MULTILANE, 1W OR 2W WITH NONTRAVERSABLE MEDIAN
701602-10	URBAN LANE CLOSURE, MULTILANE, 2W WITH BIDIRECTIONAL LEFT TURN LANE
701606-10	URBAN SINGLE LANE CLOSURE, MULTILANE, 2W WITH MOUNTABLE MEDIAN
701611-01	URBAN HALF ROAD CLOSURE, MULTILANE, 2W WITH MOUNTABLE MEDIAN
701701-10	URBAN LANE CLOSURE, MULTILANE INTERSECTION
701801-06	SIDEWALK, CORNER OR CROSSWALK CLOSURE
701901-08	TRAFFIC CONTROL DEVICES

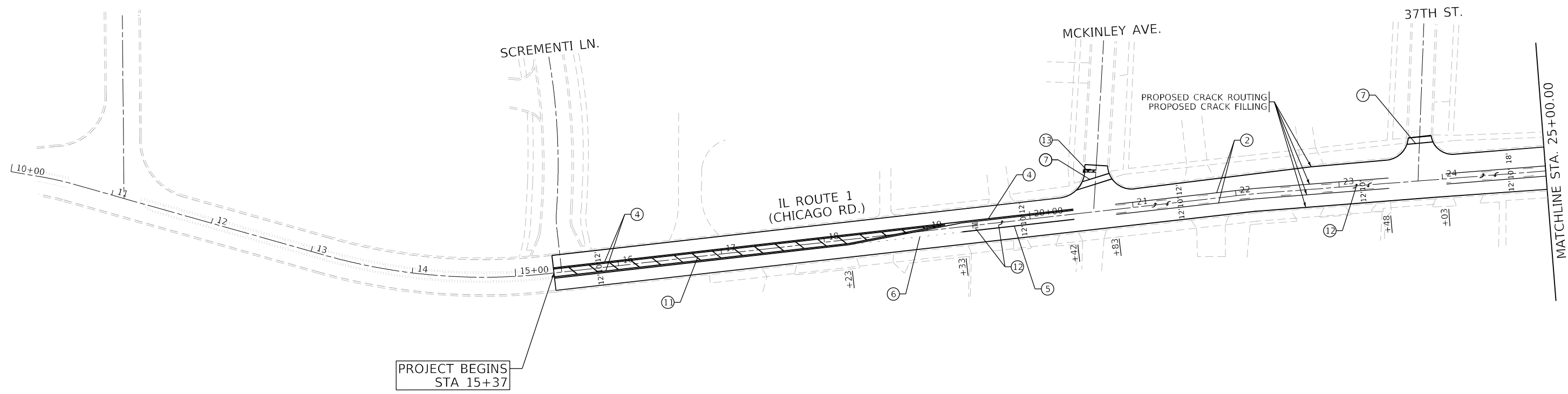
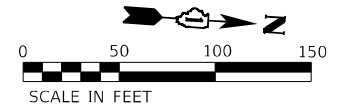
# GENERAL NOTES

- BEFORE STARTING ANY EXCAVATION, THE CONTRACTOR SHALL CALL "J.U.L.I.E". AT (800) 892-0123 OR 811 FOR FIELD LOCATIONS OF BURIED ELECTRIC, TELEPHONE AND GAS UTILITIES. 48 HOUR NOTIFICATION IS REQUIRED.
- THE CONTRACTOR SHALL COORDINATE CONSTRUCTION ACTIVITIES WITH UTILITY COMPANIES OF THE CITY OF CHICAGO HEIGHTS AND THE VILLAGES OF GLENWOOD, HOMEWOOD, SOUTH CHICAGO HEIGHTS, AND STEGER.
- ALL DAMAGE TO EXISTING PAVEMENT MARKINGS OR RAISED REFLECTIVE PAVEMENT MARKERS OUTSIDE THE REMOVAL LINE SHOWN ON THE PLANS SHALL BE REPLACED AT NO ADDITIONAL COST TO THE DEPARTMENT.
- THE CONTRACTOR WILL NOT BE ALLOWED TO SET UP A YARD OR FIELD OFFICE ON STATE PROPERTY WITHOUT WRITTEN PERMISSION FROM THE DEPARTMENT.
- IT SHALL BE THE CONTRACTOR'S RESPONSIBILITY TO VERIFY ALL DIMENSIONS AND CONDITIONS EXISTING IN THE FIELD PRIOR TO CONSTRUCTION AND ORDERING OF MATERIALS.
- THE CONTRACTOR SHALL CONTACT THE DISTRICT ONE TRAFFIC CONTROL SUPERVISOR AT KALPANA.KANNAN-HOSADURGA@ILLINOIS.GOV A MINIMUM OF 72 HOURS IN ADVANCE OF BEGINNING WORK.
- THE ENGINEER SHALL CONTACT PATRICE HARRIS, AREA TRAFFIC FIELD TECHNICIAN AT PATRICE.HARRIS@ILLINOIS.GOV FOR COOK COUNTY, AND ERIC CAMPOS, AREA TRAFFIC FIELD ENGINEER AT ERIC.CAMPOS@ILLINOIS.GOV FOR WILL COUNTY, A MINIMUM OF TWO (2) WEEKS PRIOR TO THE PLACEMENT OF PERMANENT PAVEMENT MARKINGS.
- ALL CRACK ROUTING & CRACK SEALING LOCATIONS WILL BE DETERMINED IN THE FIELD BY THE ENGINEER. CRACK ROUTING SHALL BE OMITTED WHERE VEHICLE DETECTOR LOOPS & RAISED REFLECTIVE PAVEMENT MARKERS ARE PRESENT IN THE PAVEMENT.
- MATERIALS RESULTING FROM THE ROUTING OF CRACKS IN THE EXISTING PAVEMENT MAY BE PLACED, SHAPED AND COMPACTED TO THE SATISFACTION OF THE ENGINEER ALONG EXISTING AGGREGATE SHOULDERS ADJACENT TO THE PAVEMENT. ALL MATERIALS RESULTING FROM THE ROUTING OF CRACKS IN PAVEMENTS WITHOUT AGGREGATE SHOULDERS AND SURPLUS MATERIALS RESULTING FROM THE ROUTING OF CRACKS IN PAVEMENTS WITH AGGREGATE SHOULDERS, WHERE ALL MATERIALS ARE NOT PLACED ALONG EXISTING AGGREGATE SHOULDERS, SHALL BE DISPOSED OF AS SPECIFIED IN ARTICLE 202.03 OF THE STANDARD SPECIFICATIONS.
- MODIFIED URETHANE PAVEMENT MARKING SHALL BE PLACED IMMEDIATELY AFTER C & J SEALER TEMPERATURE HAS COOLED DOWN AND DOES NOT AFFECT THE APPLICATION OF THE MODIFIED URETHANE PAVEMENT MARKING.
- DURING CONSTRUCTION OPERATIONS, IF ANY LOOSE MATERIAL IS DEPOSITED IN THE FLOW LINE OF DRAINAGE STRUCTURES SUCH THAT THE NATURAL FLOW OF WATER IS OBSTRUCTED, THE MATERIAL SHALL BE REMOVED AT THE CLOSE OF EACH WORKING DAY. AT THE CONCLUSION OF CONSTRUCTION OPERATION, ALL UTILITY STRUCTURES SHALL BE FREE FROM DUST AND DEBRIS. THE WORK SPECIFIED ABOVE WILL NOT BE PAID FOR SEPARATELY BUT SHALL BE INCLUDED IN THE COST OF THE CONTRACT.
- DO NOT SCALE PLANS FOR CONSTRUCTION DIMENSIONS.
- BEFORE BEGINNING ANY WORK, THE CONTRACTOR SHALL RETAIN AND RECORD FOR FUTURE REFERENCE, ALL EXISTING PAVEMENT MARKING LINES (AND RAISED REFLECTIVE PAVEMENT MARKERS) IN ORDER THAT THESE LOCATIONS CAN BE RE-ESTABLISHED FOR STRIPING. EXACT LOCATIONS OF ALL PAVEMENT MARKINGS SHALL BE AS SHOWN ON THE PLANS OR AS DIRECTED BY THE ENGINEER.
- CONTRACTOR MUST EXERCISE CAUTION WHEN WORKING WITHIN 25' FROM THE RAILROAD TRACKS AND NOT FOUL THE RAILROAD TRACKS WITH ANY PERSONNEL, VEHICLES OR EQUIPMENT.

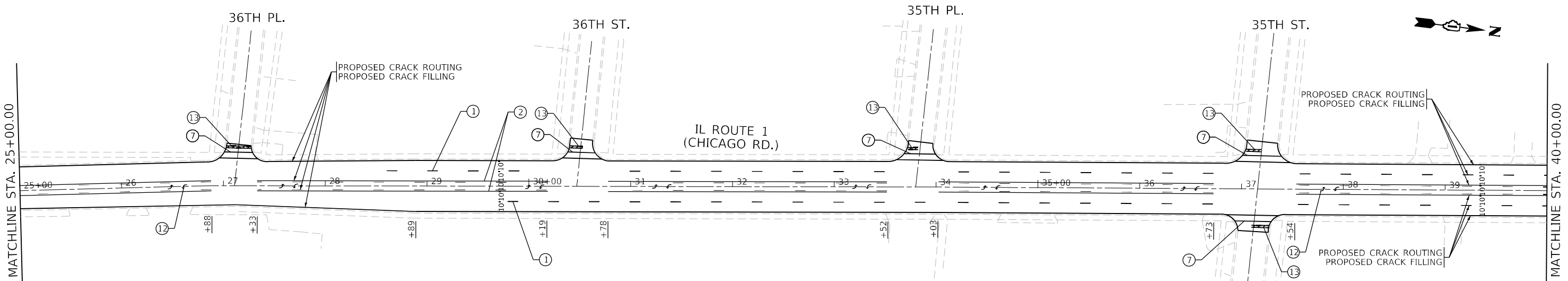
MODEL: Default  
 FILE NAME: P:\2020-2021\DOT Various Phase 2 (T1B 116 Item 16)WD 20 62\N48\CHICAGO STREETS\12\N48-SHT-GENERALNOTES.dgn

<b>INFRASTRUCTURE ENGINEERING</b> INCORPORATED 1 South Wacker   Suite 2650   Chicago, IL 60606 P 312.425.9580   F 312.425.9584   www.infrastructure-eng.com	USER NAME = ALane PLOT SCALE = 100.0000' / in. PLOT DATE = 5/16/2022	DESIGNED - HA DRAWN - HA CHECKED - ACL DATE - 05/03/2022	REVISED - REVISED - REVISED -	<b>STATE OF ILLINOIS</b> <b>DEPARTMENT OF TRANSPORTATION</b>	<b>INDEX OF SHEETS, STATE STANDARDS, AND GENERAL NOTES</b> <b>IL ROUTE 1 (STRIEFF LANE TO SCREMENTI LANE)</b>	F.A.P. RTE. = 876 SECTION = 2021-050-C15 COUNTY = COOK & WILL ILLINOIS   FED. AID PROJECT	TOTAL SHEETS = 23 SHEET NO. = 2 CONTRACT NO. = 62N48
	SCALE: NTS STA. TO STA.						





PROJECT BEGINS  
STA 15+37



**PAVEMENT MARKING LEGEND**

- ① MODIFIED URETHANE PAVEMENT MARKING LINE, 4" WHITE LANE LINE @ 30' SKIP & 10' DASH
- ② MODIFIED URETHANE PAVEMENT MARKING LINE, 4" YELLOW PASSING LINE, 1 @ SOLID, 1 @ 30' SKIP & 10' DASH
- ③ MODIFIED URETHANE PAVEMENT MARKING LINE, 4" WHITE EDGE LINE
- ④ MODIFIED URETHANE PAVEMENT MARKING LINE, 4" YELLOW CENTER LINE, 2 @ 11" C-C
- ⑤ MODIFIED URETHANE PAVEMENT MARKING LINE, 6" WHITE TURN LANE
- ⑥ MODIFIED URETHANE PAVEMENT MARKING LINE, 6" WHITE TURN LANE @ 6' SKIP & 2' DASH
- ⑦ MODIFIED URETHANE PAVEMENT MARKING LINE, 6" WHITE CROSSWALK LINE, 2 @ 6' C-C
- ⑧ MODIFIED URETHANE PAVEMENT MARKING LINE, 12" WHITE DIAGONAL LINE @ 75' SPACING OR 5 MIN
- ⑨ MODIFIED URETHANE PAVEMENT MARKING LINE, 12" WHITE LONGITUDINAL BAR @ 90°, 2' SPACING
- ⑩ MODIFIED URETHANE PAVEMENT MARKING LINE, 12" WHITE LONGITUDINAL BAR @ 45°, 2' SPACING
- ⑪ MODIFIED URETHANE PAVEMENT MARKING LINE, 12" YELLOW DIAGONAL LINE @ 75' SPACING OR 5 MIN.
- ⑫ MODIFIED URETHANE PAVEMENT MARKING LETTERS & SYMBOLS, WHITE
- ⑬ MODIFIED URETHANE PAVEMENT MARKING LINE, 24" WHITE STOP BAR
- ⑭ MODIFIED URETHANE PAVEMENT MARKING LINE, 4" YELLOW EDGE LINE

MODEL: P:\d\inf\11...  
 FILE NAME: P:\d\inf\11...  
 MODEL: P:\d\inf\11...  
 FILE NAME: P:\d\inf\11...

**INFRASTRUCTURE ENGINEERING INCORPORATED**  
 1 South Wacker | Suite 2650 | Chicago, IL 60606  
 P 312.425.9598 | F 312.425.9594 | www.infrastructure-eng.com

USER NAME =	Alane
DESIGNED -	HA
DRAWN -	HA
CHECKED -	ACL
DATE -	05/03/2022
PLOT SCALE =	100,0000' / in.
PLOT DATE =	5/16/2022

DESIGNED -	HA	REVISED -	
DRAWN -	HA	REVISED -	
CHECKED -	ACL	REVISED -	
DATE -	05/03/2022		

**STATE OF ILLINOIS  
DEPARTMENT OF TRANSPORTATION**

**PROPOSED ROADWAY AND PAVEMENT MARKING PLANS  
IL ROUTE 1 (STRIEFF LANE TO SCREMENTI LANE)**

SCALE: 1" = 50'

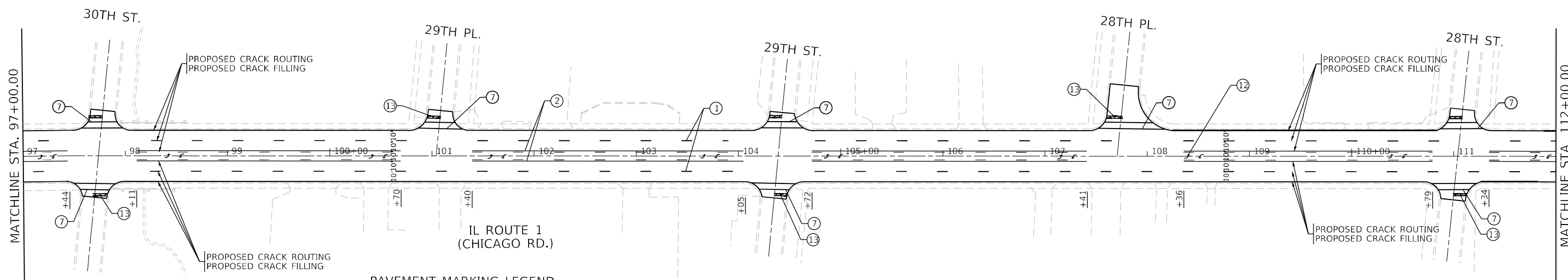
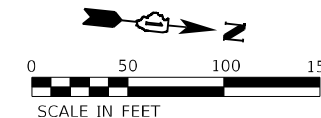
STA. TO STA.

F.A.P. RTE.	SECTION	COUNTY	TOTAL SHEETS	SHEET NO.
876	2021-050-CIS	COOK & WILL	23	4
CONTRACT NO. 62N48				
ILLINOIS FED. AID PROJECT				



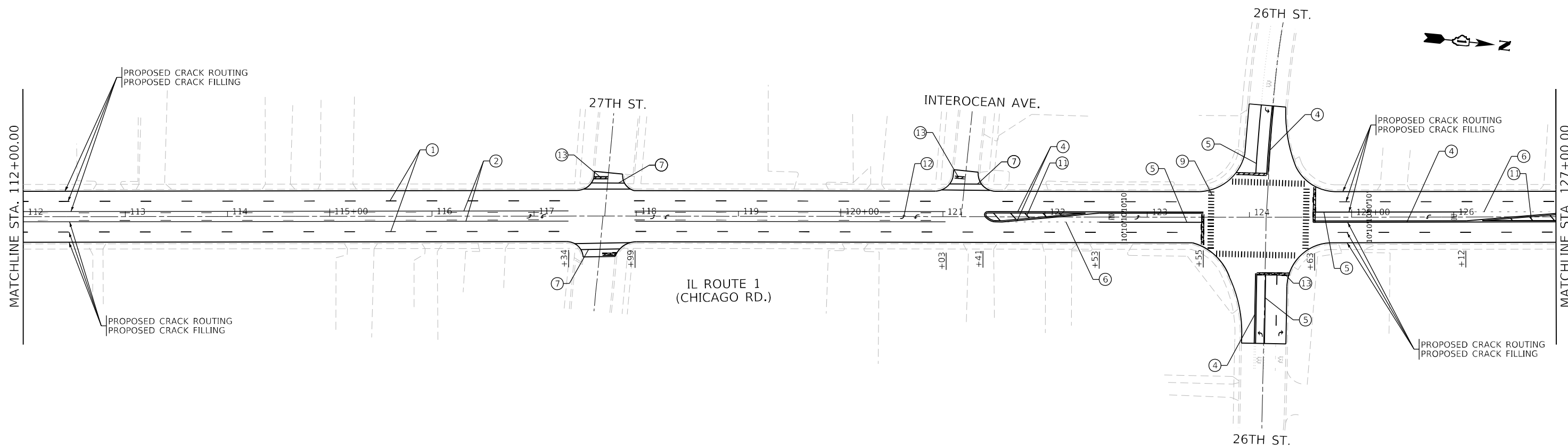






**PAVEMENT MARKING LEGEND**

- ① MODIFIED URETHANE PAVEMENT MARKING LINE, 4" WHITE LANE LINE @ 30' SKIP & 10' DASH
- ② MODIFIED URETHANE PAVEMENT MARKING LINE, 4" YELLOW PASSING LINE, 1 @ SOLID, 1 @ 30' SKIP & 10' DASH
- ③ MODIFIED URETHANE PAVEMENT MARKING LINE, 4" WHITE EDGE LINE
- ④ MODIFIED URETHANE PAVEMENT MARKING LINE, 4" YELLOW CENTER LINE, 2 @ 11" C-C
- ⑤ MODIFIED URETHANE PAVEMENT MARKING LINE, 6" WHITE TURN LANE
- ⑥ MODIFIED URETHANE PAVEMENT MARKING LINE, 6" WHITE TURN LANE @ 6' SKIP & 2' DASH
- ⑦ MODIFIED URETHANE PAVEMENT MARKING LINE, 6" WHITE CROSSWALK LINE, 2 @ 6' C-C
- ⑧ MODIFIED URETHANE PAVEMENT MARKING LINE, 12" WHITE DIAGONAL LINE @ 75' SPACING OR 5 MIN
- ⑨ MODIFIED URETHANE PAVEMENT MARKING LINE, 12" WHITE LONGITUDINAL BAR @ 90°, 2' SPACING
- ⑩ MODIFIED URETHANE PAVEMENT MARKING LINE, 12" WHITE LONGITUDINAL BAR @ 45°, 2' SPACING
- ⑪ MODIFIED URETHANE PAVEMENT MARKING LINE, 12" YELLOW DIAGONAL LINE @ 75' SPACING OR 5 MIN.
- ⑫ MODIFIED URETHANE PAVEMENT MARKING LETTERS & SYMBOLS, WHITE
- ⑬ MODIFIED URETHANE PAVEMENT MARKING LINE, 24" WHITE STOP BAR
- ⑭ MODIFIED URETHANE PAVEMENT MARKING LINE, 4" YELLOW EDGE LINE



MODEL Path: \\...  
 FILE NAME: P:\2020\4094-00\_IDOT\_Various Phase 2 (RTE 106 Item 16)WV\20\_62N48\DC\CAD\05\_Sheet\162N48\_SHT-21\_N48.dgn

**INFRASTRUCTURE ENGINEERING INCORPORATED**  
 1 South Wacker | Suite 2650 | Chicago, IL 60606  
 P 312.425.9598 | F 312.425.9594 | www.infrastructure-eng.com

USER NAME = Alane  
 PLOT SCALE = 100,0000' / in.  
 PLOT DATE = 5/16/2022

DESIGNED - HA  
 DRAWN - HA  
 CHECKED - ACL  
 DATE - 05/03/2022

REVISED -  
 REVISED -  
 REVISED -

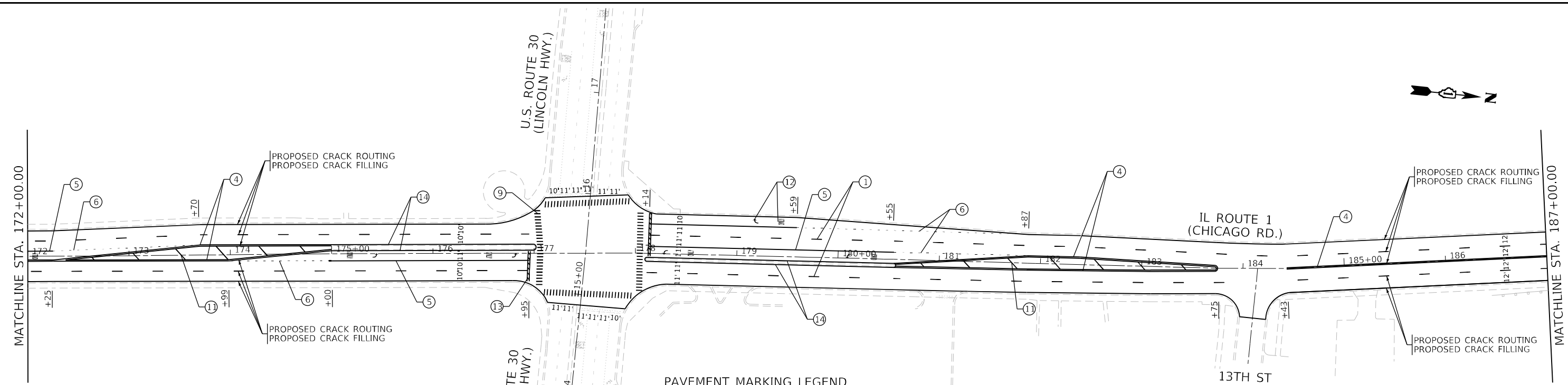
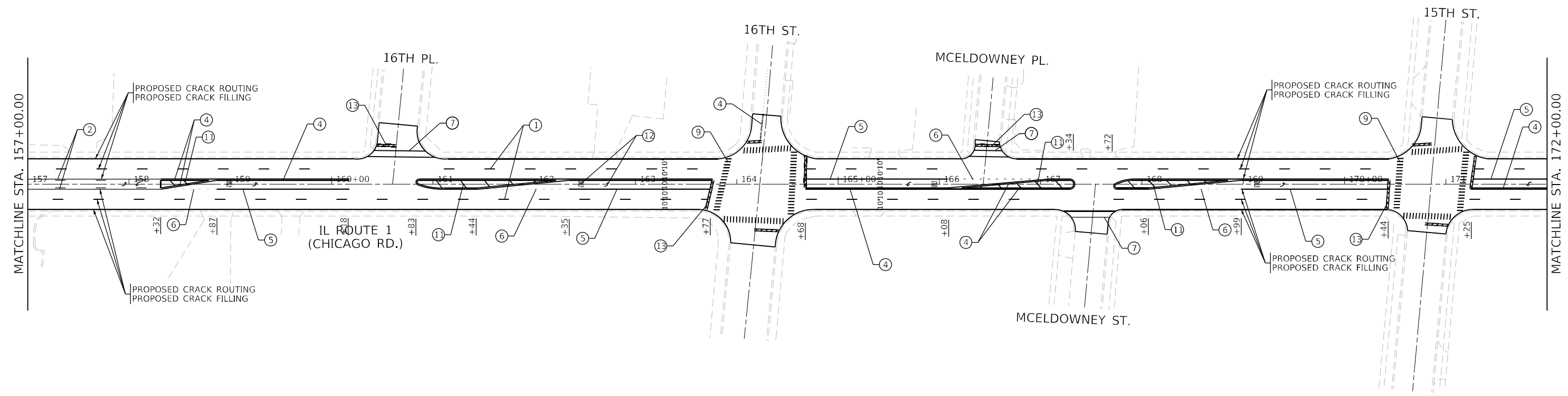
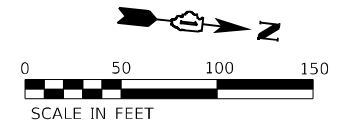
**STATE OF ILLINOIS  
 DEPARTMENT OF TRANSPORTATION**

**PROPOSED ROADWAY AND PAVEMENT MARKING PLANS  
 IL ROUTE 1 (STRIEFF LANE TO SCREMENTI LANE)**

SCALE: 1" = 50'      STA.      TO STA.

F.A.P. RTE.	SECTION	COUNTY	TOTAL SHEETS	SHEET NO.
876	2021-050-CIS	COOK & WILL	23	7
CONTRACT NO. 62N48				
ILLINOIS FED. AID PROJECT				





**PAVEMENT MARKING LEGEND**

- ① MODIFIED URETHANE PAVEMENT MARKING LINE, 4" WHITE LANE LINE @ 30' SKIP & 10' DASH
- ② MODIFIED URETHANE PAVEMENT MARKING LINE, 4" YELLOW PASSING LINE, 1 @ SOLID, 1 @ 30' SKIP & 10' DASH
- ③ MODIFIED URETHANE PAVEMENT MARKING LINE, 4" WHITE EDGE LINE
- ④ MODIFIED URETHANE PAVEMENT MARKING LINE, 4" YELLOW CENTER LINE, 2 @ 11" C-C
- ⑤ MODIFIED URETHANE PAVEMENT MARKING LINE, 6" WHITE TURN LANE
- ⑥ MODIFIED URETHANE PAVEMENT MARKING LINE, 6" WHITE TURN LANE @ 6' SKIP & 2' DASH
- ⑦ MODIFIED URETHANE PAVEMENT MARKING LINE, 6" WHITE CROSSWALK LINE, 2 @ 6' C-C
- ⑧ MODIFIED URETHANE PAVEMENT MARKING LINE, 12" WHITE DIAGONAL LINE @ 75' SPACING OR 5 MIN
- ⑨ MODIFIED URETHANE PAVEMENT MARKING LINE, 12" WHITE LONGITUDINAL BAR @ 90°, 2' SPACING
- ⑩ MODIFIED URETHANE PAVEMENT MARKING LINE, 12" WHITE LONGITUDINAL BAR @ 45°, 2' SPACING
- ⑪ MODIFIED URETHANE PAVEMENT MARKING LINE, 12" YELLOW DIAGONAL LINE @ 75' SPACING OR 5 MIN.
- ⑫ MODIFIED URETHANE PAVEMENT MARKING LETTERS & SYMBOLS, WHITE
- ⑬ MODIFIED URETHANE PAVEMENT MARKING LINE, 24" WHITE STOP BAR
- ⑭ MODIFIED URETHANE PAVEMENT MARKING LINE, 4" YELLOW EDGE LINE

MODEL: P:\d\h\i  
 FILE NAME: P:\2020\4094-00\_IDOT\_Various\_Phase\_2\ITRFL\_196 Item 16\NWD\_26\_62N48\DC\CAD\Drawings\Sheet\172-00.dgn  
 1 South Wacker | Suite 2650 | Chicago, IL 60606  
 P 312.425.9598 | F 312.425.9599 | www.infrastructure-eng.com

<b>INFRASTRUCTURE ENGINEERING INCORPORATED</b> 1 South Wacker   Suite 2650   Chicago, IL 60606 P 312.425.9598   F 312.425.9599   www.infrastructure-eng.com	USER NAME = Alane	DESIGNED - HA	REVISED -
	PLOT SCALE = 100,0000' / in.	DRAWN - HA	REVISED -
	PLOT DATE = 5/16/2022	CHECKED - ACL	REVISED -
		DATE - 05/03/2022	

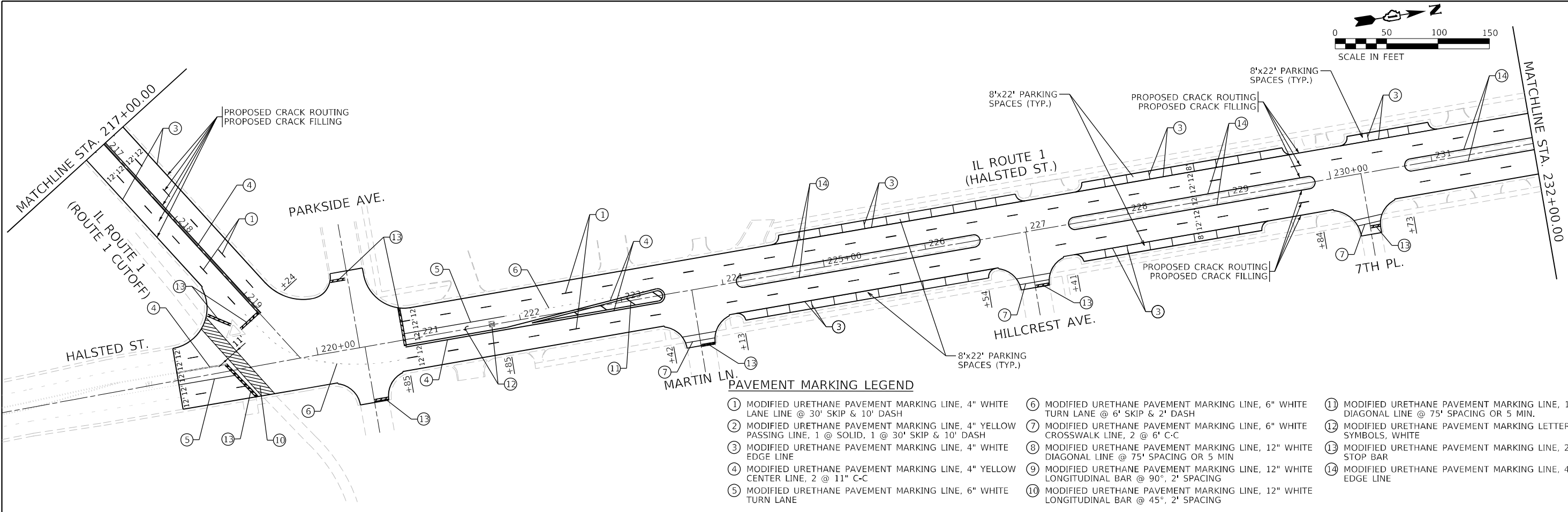
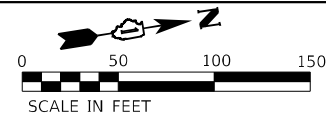
**STATE OF ILLINOIS**  
**DEPARTMENT OF TRANSPORTATION**

**PROPOSED ROADWAY AND PAVEMENT MARKING PLANS**  
**IL ROUTE 1 (STRIEFF LANE TO SCREMENTI LANE)**  
 SCALE: 1" = 50'      STA.      TO STA.

F.A.P. RTE.	SECTION	COUNTY	TOTAL SHEETS	SHEET NO.
876	2021-050-CIS	COOK & WILL	23	9
ILLINOIS FED. AID PROJECT			CONTRACT NO. 62N48	

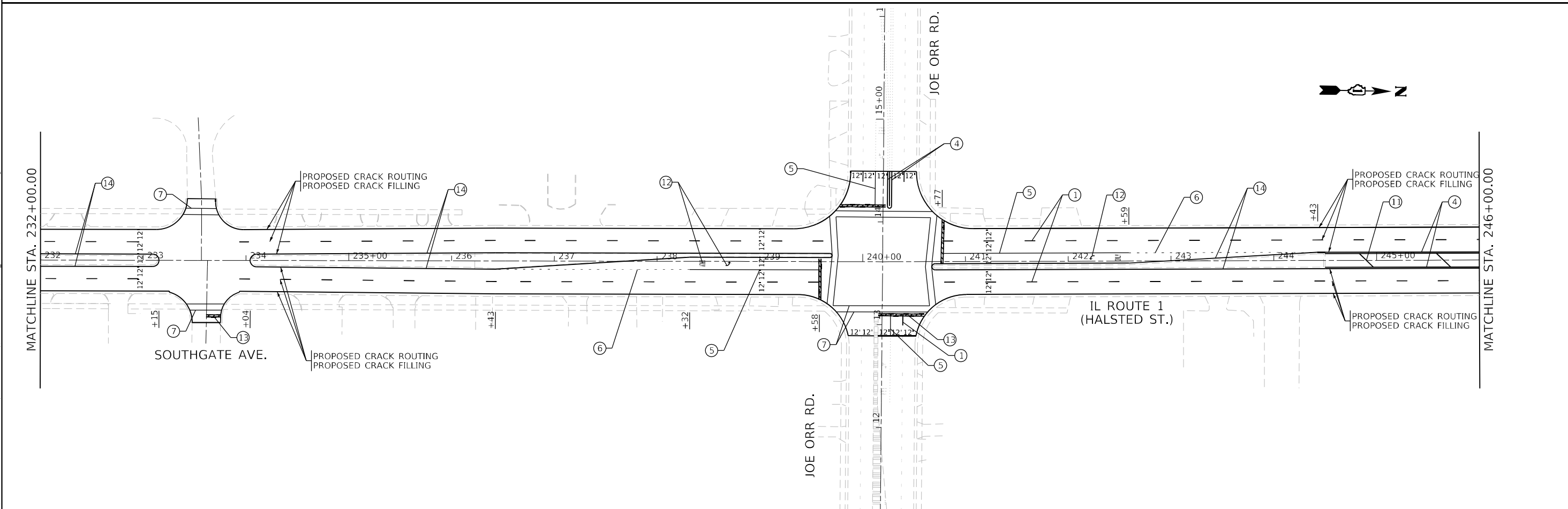






**PAVEMENT MARKING LEGEND**

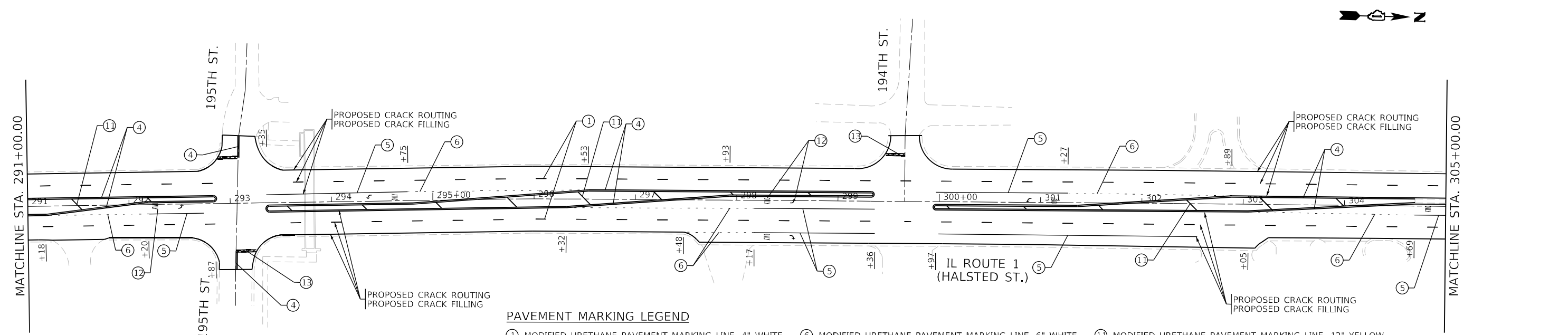
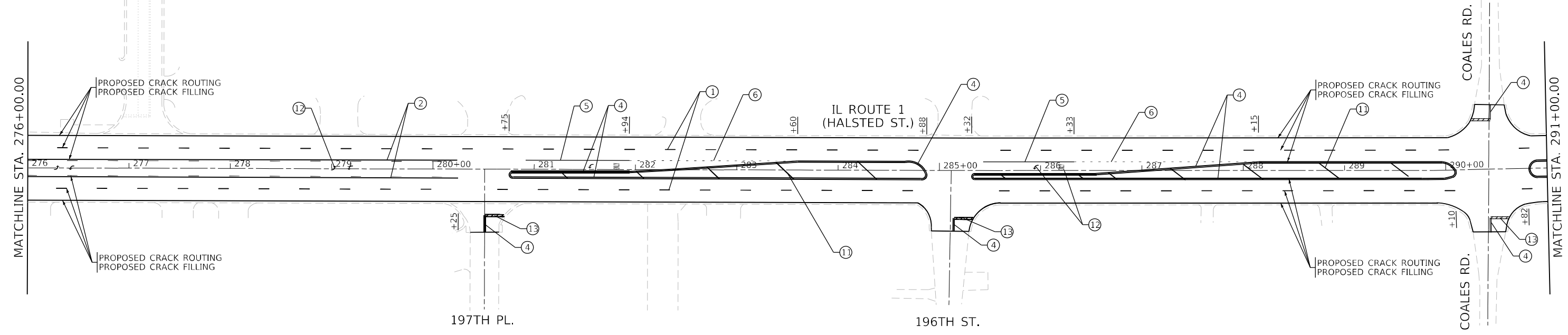
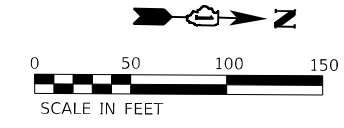
- |   |   |   |
|---|---|---|
| ① MODIFIED URETHANE PAVEMENT MARKING LINE, 4" WHITE LANE LINE @ 30' SKIP & 10' DASH                   | ⑥ MODIFIED URETHANE PAVEMENT MARKING LINE, 6" WHITE TURN LANE @ 6' SKIP & 2' DASH         | ⑪ MODIFIED URETHANE PAVEMENT MARKING LINE, 12" YELLOW DIAGONAL LINE @ 75' SPACING OR 5 MIN. |
| ② MODIFIED URETHANE PAVEMENT MARKING LINE, 4" YELLOW PASSING LINE, 1 @ SOLID, 1 @ 30' SKIP & 10' DASH | ⑦ MODIFIED URETHANE PAVEMENT MARKING LINE, 6" WHITE CROSSWALK LINE, 2 @ 6' C-C            | ⑫ MODIFIED URETHANE PAVEMENT MARKING LETTERS & SYMBOLS, WHITE                               |
| ③ MODIFIED URETHANE PAVEMENT MARKING LINE, 4" WHITE EDGE LINE   | ⑧ MODIFIED URETHANE PAVEMENT MARKING LINE, 12" WHITE DIAGONAL LINE @ 75' SPACING OR 5 MIN | ⑬ MODIFIED URETHANE PAVEMENT MARKING LINE, 24" WHITE STOP BAR                               |
| ④ MODIFIED URETHANE PAVEMENT MARKING LINE, 4" YELLOW CENTER LINE, 2 @ 11" C-C                         | ⑨ MODIFIED URETHANE PAVEMENT MARKING LINE, 12" WHITE LONGITUDINAL BAR @ 90°, 2' SPACING   | ⑭ MODIFIED URETHANE PAVEMENT MARKING LINE, 4" YELLOW EDGE LINE                              |
| ⑤ MODIFIED URETHANE PAVEMENT MARKING LINE, 6" WHITE TURN LANE   | ⑩ MODIFIED URETHANE PAVEMENT MARKING LINE, 12" WHITE LONGITUDINAL BAR @ 45°, 2' SPACING   |   |



MODEL: P:\inf\h...  
 FILE NAME: P:\2020\2020-09-04-00\_IDOT\_Various\_Phase\_2\_LPTL\_196\_Item\_161\W\20\_62\N48\DC\CAD\0\_Sheets\162\N48\_SHT-21\_N48.dgn

<b>INFRASTRUCTURE ENGINEERING INCORPORATED</b> 1 South Wacker   Suite 2650   Chicago, IL 60606 P 312.425.9598   F 312.425.9594   www.infrastructure-eng.com	USER NAME = Alane PLOT SCALE = 100,0000' / in. PLOT DATE = 5/16/2022	DESIGNED - HA DRAWN - HA CHECKED - ACL DATE - 05/03/2022	REVISED - REVISED - REVISED -	<b>STATE OF ILLINOIS</b> <b>DEPARTMENT OF TRANSPORTATION</b>	<b>PROPOSED ROADWAY AND PAVEMENT MARKING PLANS</b> <b>IL ROUTE 1 (STRIEFF LANE TO SCREMENTI LANE)</b>	SCALE: 1" = 50' STA. TO STA.	F.A.P. RTE. 876 SECTION 2021-050-CIS COUNTY COOK & WILL TOTAL SHEETS 23 SHEET NO. 11 CONTRACT NO. 62N48 ILLINOIS FED. AID PROJECT
---	--	---	-------------------------------------	---	--	---------------------------------	---





**PAVEMENT MARKING LEGEND**

- ① MODIFIED URETHANE PAVEMENT MARKING LINE, 4" WHITE LANE LINE @ 30' SKIP & 10' DASH
- ② MODIFIED URETHANE PAVEMENT MARKING LINE, 4" YELLOW PASSING LINE, 1 @ SOLID, 1 @ 30' SKIP & 10' DASH
- ③ MODIFIED URETHANE PAVEMENT MARKING LINE, 4" WHITE EDGE LINE
- ④ MODIFIED URETHANE PAVEMENT MARKING LINE, 4" YELLOW CENTER LINE, 2 @ 11" C-C
- ⑤ MODIFIED URETHANE PAVEMENT MARKING LINE, 6" WHITE TURN LANE
- ⑥ MODIFIED URETHANE PAVEMENT MARKING LINE, 6" WHITE TURN LANE @ 6' SKIP & 2' DASH
- ⑦ MODIFIED URETHANE PAVEMENT MARKING LINE, 6" WHITE CROSSWALK LINE, 2 @ 6' C-C
- ⑧ MODIFIED URETHANE PAVEMENT MARKING LINE, 12" WHITE DIAGONAL LINE @ 75' SPACING OR 5 MIN
- ⑨ MODIFIED URETHANE PAVEMENT MARKING LINE, 12" WHITE LONGITUDINAL BAR @ 90°, 2' SPACING
- ⑩ MODIFIED URETHANE PAVEMENT MARKING LINE, 12" WHITE LONGITUDINAL BAR @ 45°, 2' SPACING
- ⑪ MODIFIED URETHANE PAVEMENT MARKING LINE, 12" YELLOW DIAGONAL LINE @ 75' SPACING OR 5 MIN.
- ⑫ MODIFIED URETHANE PAVEMENT MARKING LETTERS & SYMBOLS, WHITE
- ⑬ MODIFIED URETHANE PAVEMENT MARKING LINE, 24" WHITE STOP BAR
- ⑭ MODIFIED URETHANE PAVEMENT MARKING LINE, 4" YELLOW EDGE LINE

MODEL: P:\62N48\62N48-CAD\DOT\_Various Phase 2 (RTE)\_106 Item 16\NWD\_26\_62N48\DOT\CADD\_Sheet\162N48-SHT-11-N.dgn  
 FILE NAME: P:\62N48\62N48-CAD\DOT\_Various Phase 2 (RTE)\_106 Item 16\NWD\_26\_62N48\DOT\CADD\_Sheet\162N48-SHT-11-N.dgn

**INFRASTRUCTURE ENGINEERING INCORPORATED**  
 1 South Wacker | Suite 2650 | Chicago, IL 60606  
 P 312.425.9598 | F 312.425.9594 | www.infrastructure-eng.com

USER NAME = Alane	DESIGNED - HA	REVISED -
PLOT SCALE = 100,0000' / in.	DRAWN - HA	REVISED -
PLOT DATE = 5/16/2022	CHECKED - ACL	REVISED -
	DATE - 05/03/2022	

**STATE OF ILLINOIS  
DEPARTMENT OF TRANSPORTATION**

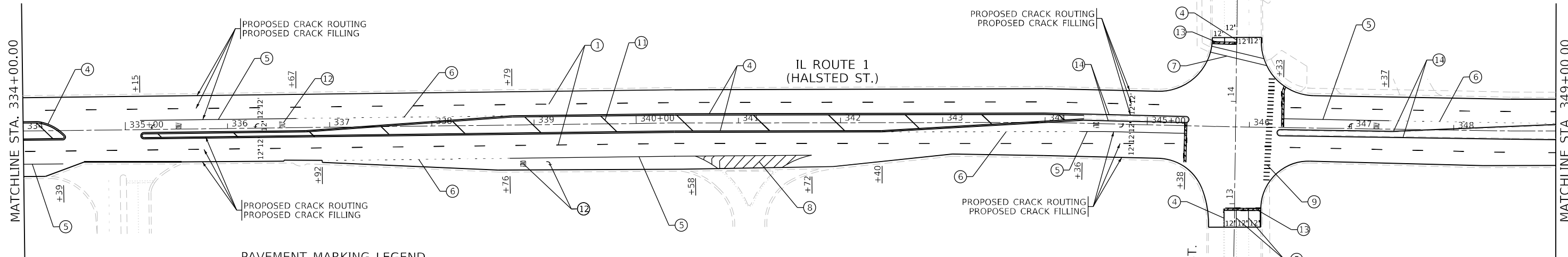
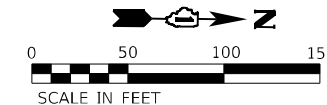
**PROPOSED ROADWAY AND PAVEMENT MARKING PLANS  
IL ROUTE 1 (STRIEFF LANE TO SCREMENTI LANE)**

SCALE: 1" = 50'      STA.      TO STA.

F.A.P. RTE. 876	SECTION 2021-050-CIS	COUNTY COOK & WILL	TOTAL SHEETS 23	SHEET NO. 13
CONTRACT NO. 62N48				
ILLINOIS FED. AID PROJECT				

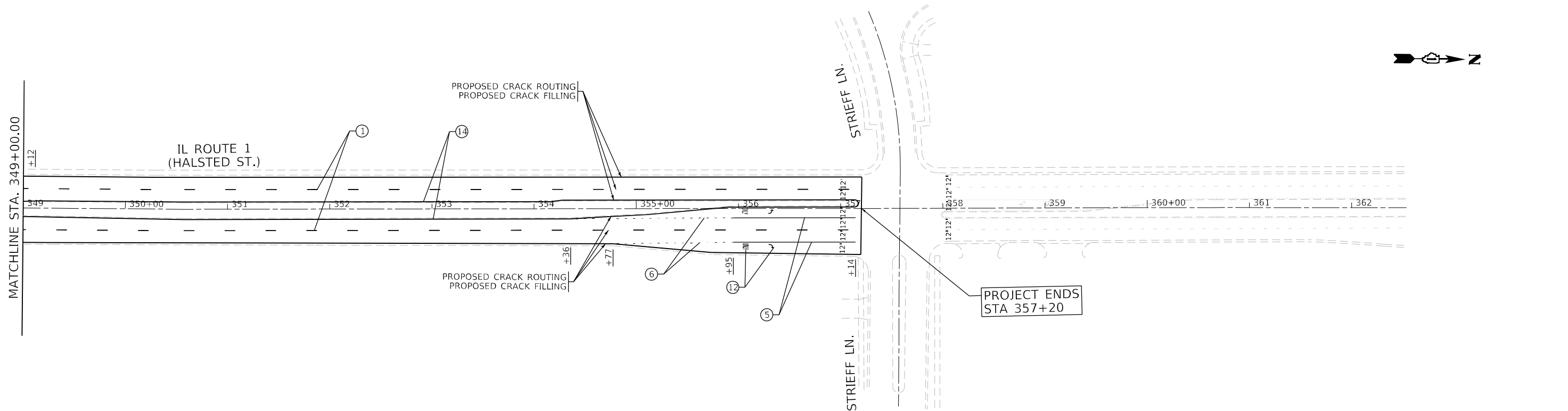






**PAVEMENT MARKING LEGEND**

- |   |   |   |
|---|---|---|
| ① MODIFIED URETHANE PAVEMENT MARKING LINE, 4" WHITE LANE LINE @ 30' SKIP & 10' DASH                   | ⑥ MODIFIED URETHANE PAVEMENT MARKING LINE, 6" WHITE TURN LANE @ 6' SKIP & 2' DASH         | ⑪ MODIFIED URETHANE PAVEMENT MARKING LINE, 12" YELLOW DIAGONAL LINE @ 75' SPACING OR 5 MIN. |
| ② MODIFIED URETHANE PAVEMENT MARKING LINE, 4" YELLOW PASSING LINE, 1 @ SOLID, 1 @ 30' SKIP & 10' DASH | ⑦ MODIFIED URETHANE PAVEMENT MARKING LINE, 6" WHITE CROSSWALK LINE, 2 @ 6' C-C            | ⑫ MODIFIED URETHANE PAVEMENT MARKING LETTERS & SYMBOLS, WHITE                               |
| ③ MODIFIED URETHANE PAVEMENT MARKING LINE, 4" WHITE EDGE LINE   | ⑧ MODIFIED URETHANE PAVEMENT MARKING LINE, 12" WHITE DIAGONAL LINE @ 75' SPACING OR 5 MIN | ⑬ MODIFIED URETHANE PAVEMENT MARKING LINE, 24" WHITE STOP BAR                               |
| ④ MODIFIED URETHANE PAVEMENT MARKING LINE, 4" YELLOW CENTER LINE, 2 @ 11" C-C                         | ⑨ MODIFIED URETHANE PAVEMENT MARKING LINE, 12" WHITE LONGITUDINAL BAR @ 90°, 2' SPACING   | ⑭ MODIFIED URETHANE PAVEMENT MARKING LINE, 4" YELLOW EDGE LINE                              |
| ⑤ MODIFIED URETHANE PAVEMENT MARKING LINE, 6" WHITE TURN LANE   | ⑩ MODIFIED URETHANE PAVEMENT MARKING LINE, 12" WHITE LONGITUDINAL BAR @ 45°, 2' SPACING   |   |



MODEL Path: \\...  
 FILE NAME: P:\2020\4094-00 IDOT Various Phase 2 (ITB) 106 Item 161100\_20 62N48\DC\CAD\DOT Streets\162148\SHT-21-N-12.dgn

**INFRASTRUCTURE ENGINEERING INCORPORATED**  
 1 South Wacker | Suite 2650 | Chicago, IL 60606  
 P 312.425.9598 | F 312.425.9594 | www.infrastructure-eng.com

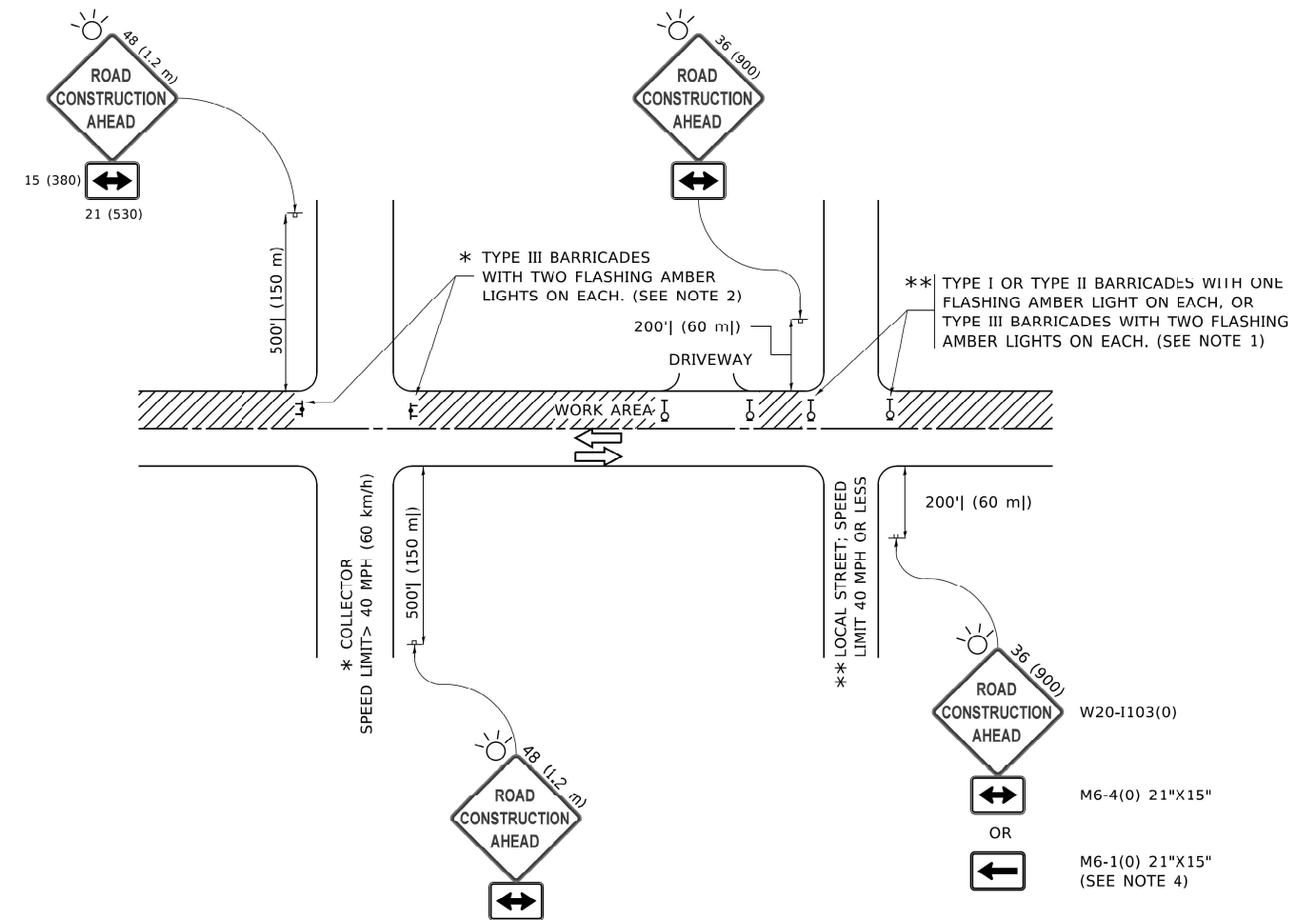
USER NAME = Alane	DESIGNED - HA	REVISED -
PLOT SCALE = 100,0000' / in.	DRAWN - HA	REVISED -
PLOT DATE = 5/16/2022	CHECKED - ACL	REVISED -
	DATE - 05/03/2022	

**STATE OF ILLINOIS  
DEPARTMENT OF TRANSPORTATION**

**PROPOSED ROADWAY AND PAVEMENT MARKING PLANS  
IL ROUTE 1 (STRIEFF LANE TO SCREMENTI LANE)**  
 SCALE: 1" = 50'      STA.      TO STA.

F.A.P. RTE.	SECTION	COUNTY	TOTAL SHEETS	SHEET NO.
876	2021-050-CIS	COOK & WILL	23	15
CONTRACT NO. 62N48				
ILLINOIS FED. AID PROJECT				





**NOTES:**

1. SIDE ROAD WITH A SPEED LIMIT OF 40 MPH (60 km/h) OR LESS AS SHOWN ON THE DRAWING AND AS DIRECTED BY THE ENGINEER:
  - a) ONE "ROAD CONSTRUCTION AHEAD" SIGN 36 x 36 (900x900) WITH A FLASHER MOUNTED ON IT APPROXIMATELY 200' (60 m) IN ADVANCE OF THE MAIN ROUTE.
  - b) THE CLOSED PORTION OF THE MAIN ROUTE SHALL BE PROTECTED BY BLOCKING WITH TYPE I, TYPE II OR TYPE III BARRICADES, 1/3 OF THE CROSS SECTION OF THE CLOSED PORTION.
2. SIDE ROAD WITH A SPEED LIMIT GREATER THAN 40 MPH (60 km/h) AS SHOWN ON THE DRAWING AND AS DIRECTED BY THE ENGINEER:
  - a) ONE "ROAD CONSTRUCTION AHEAD" SIGN 48 x 48 (1.2 m x 1.2 m) WITH A FLASHER MOUNTED ON IT APPROXIMATELY 500' (150 m) IN ADVANCE OF THE MAIN ROUTE.
  - b) BLOCKING WITH TYPE III BARRICADES, 1/2 OF THE CROSS SECTION OF THE CLOSED PORTION.
3. CONES MAY BE SUBSTITUTED FOR BARRICADES OR DRUMS AT HALF THE SPACING DURING DAY OPERATIONS. CONES SHALL BE A MINIMUM OF 28 (710) IN HEIGHT.
4. SIGNING AND THE WORK ZONE, A SINGLE HEADED ARROW (M6-1) SHALL BE USED IN LIEU OF THE DOUBLE HEADED ARROW (M6-4).
5. WHEN WORK IS BEING PERFORMED ON A SIDE ROAD OR DRIVEWAY, FOLLOW THE APPLICABLE STANDARD(S). THE DIRECTIONAL ARROW (M6-1 OR M6-4) SHALL BE COVERED OR REMOVED WHEN NO LONGER CONSISTENT WITH THE TRAFFIC CONTROL SET-UP.
6. ADVANCE WARNING SIGNS ARE TO BE OMITTED ON DRIVEWAYS UNLESS OTHERWISE SPECIFIED IN THE PLANS OR BY THE ENGINEER.
7. THE TRAFFIC CONTROL AND PROTECTION FOR SIDE ROADS, INTERSECTIONS, AND DRIVEWAYS SHALL BE INCLUDED IN THE COST OF SPECIFIED TRAFFIC CONTROL STANDARDS OR ITEMS.

All dimensions are in Inches (millimeters) unless otherwise shown.

MODEL: P:\d\h\h\... FILE NAME: P:\2020\2020-09-04-00 IDOT Various Phase 2 (TTL) 106 Item: 161110\_20\_62\4810\CAD\DOT Streets\1621485-SHT-STANDARDS-02.dgn

**INFRASTRUCTURE ENGINEERING INCORPORATED**  
 1 South Wacker | Suite 2650 | Chicago, IL 60606  
 P 312.425.9598 | F 312.425.9598 | www.infrastructure-eng.com

USER NAME = Alane	DESIGNED - HA	REVISED -
PLOT SCALE = 100,0000' / in.	DRAWN - HA	REVISED -
PLOT DATE = 5/16/2022	CHECKED - ACL	REVISED -
	DATE - 05/03/2022	

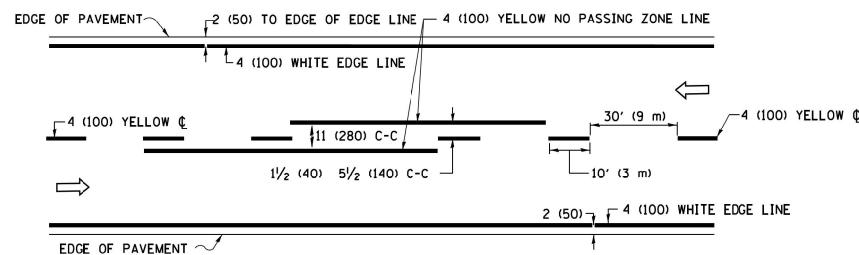
**STATE OF ILLINOIS  
DEPARTMENT OF TRANSPORTATION**

**DISTRICT ONE – TRAFFIC CONTROL AND PROTECTION FOR  
SIDE ROADS, INTERSECTIONS, AND DRIVEWAYS (TC-10)**

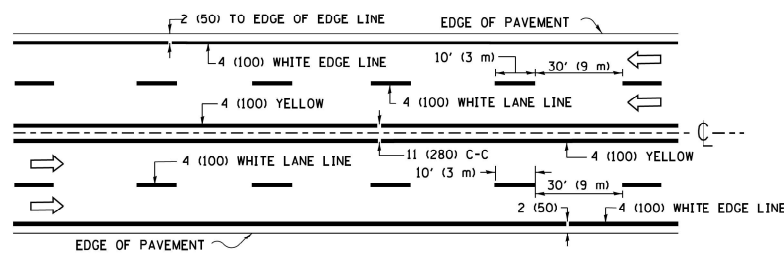
SCALE: NTS

STA. TO STA.

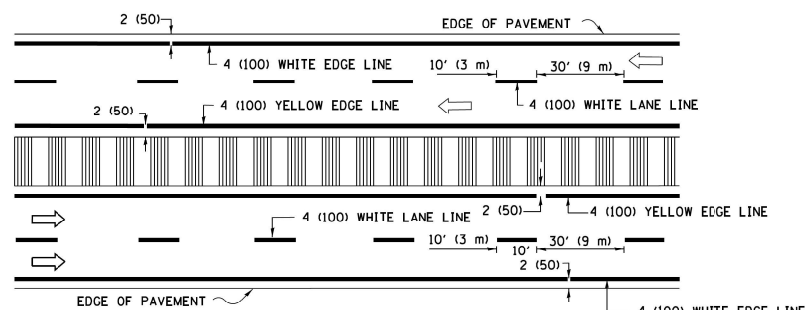
F.A.P. RTE.	SECTION	COUNTY	TOTAL SHEETS	SHEET NO.
876	2021-050-CIS	COOK & WILL	23	17
				CONTRACT NO. 62N48
ILLINOIS FED. AID PROJECT				



**2-LANE ROADWAY**

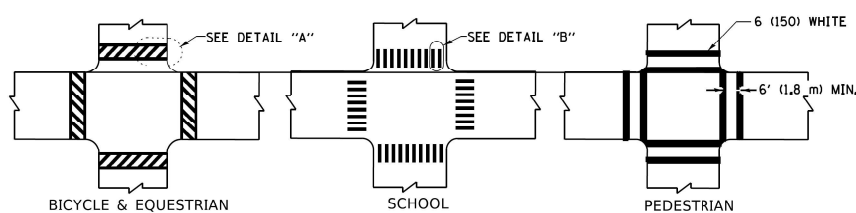


**MULTI-LANE UNDIVIDED**



**MULTI-LANE DIVIDED WITH MEDIAN**

**TYPICAL LANE AND EDGE LINE MARKING**

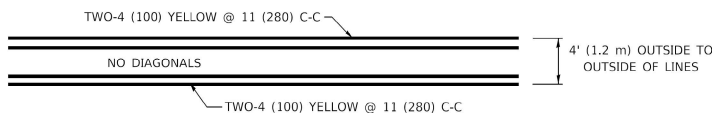


**DETAIL "A"**

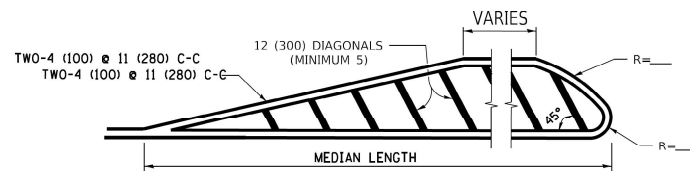
**DETAIL "B"**

**TYPICAL CROSSWALK MARKING**

\* MARKINGS SHALL BE INSTALLED PARALLEL TO THE CENTERLINE OF THE ROAD WHICH IT CROSSES

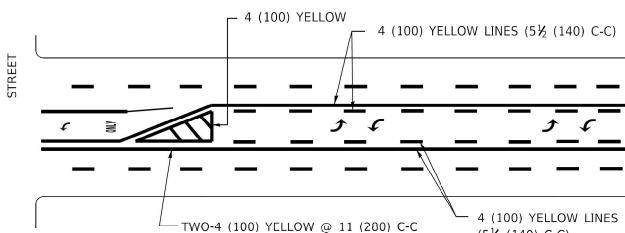


**4' (1.2 m) WIDE MEDIANS ONLY**



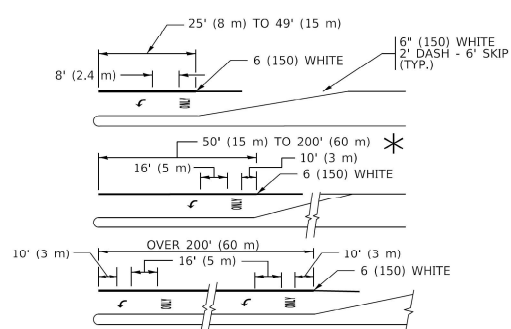
**MEDIANS OVER 4' (1.2 m) WIDE**

DIAGONAL LINE SPACING: 50' (15 m) C-C (LESS THAN 30MPH (50 km/h))  
75' (25 m) C-C 30MPH (50 km/h) TO 45MPH (70 km/h))  
150' (45 m) C-C (MORE THAN 45MPH (70 km/h))



**MEDIAN WITH TWO-WAY LEFT TURN LANE**

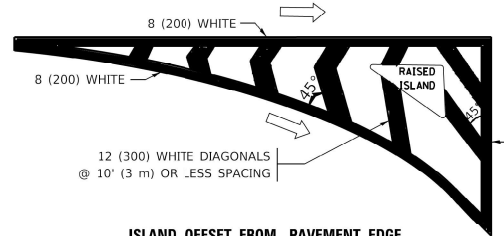
**TYPICAL PAINTED MEDIAN MARKING**



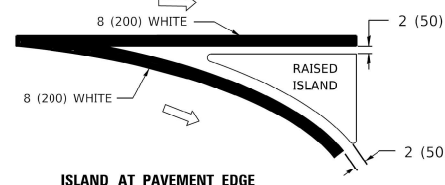
**TYPICAL LEFT (OR RIGHT) TURN LANE**

**TYPICAL TURN LANE MARKING**

FULL SIZE LETTERS 8' (2.4 m) AND ARROWS SHALL BE USED.  
AREA = 15.6 SQ. FT. (1.5 m<sup>2</sup>) ONLY AREA = 20.8 SQ. FT. (1.9 m<sup>2</sup>)  
\* TURN LANES IN EXCESS OF 400' (120 m) IN LENGTH MAY HAVE AN ADDITIONAL SET OF ARROW - "ONLY" INSTALLED MIDWAY BETWEEN THE OTHER TWO SETS OF ARROW - "ONLY".

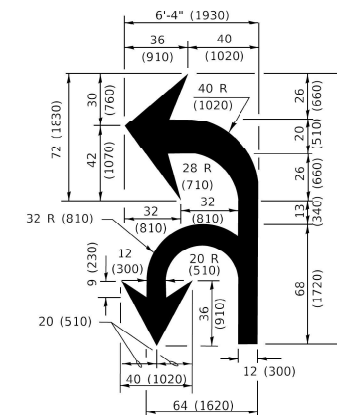


**ISLAND OFFSET FROM PAVEMENT EDGE**

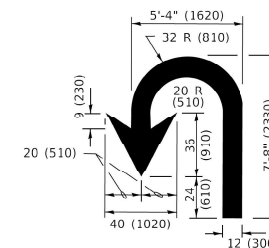


**ISLAND AT PAVEMENT EDGE**

**TYPICAL ISLAND MARKING**



**COMBINATION LEFT AND U-TURN**



**U-TURN**

**LANE REDUCTION TRANSITION**

\* LANE REDUCTION ARROWS REQUIRED AT SPEEDS OF 45 MPH OR GREATER OR WHEN SPECIFIED IN PLANS.

D(FT)	SPEED LIMIT
345	30
425	35
500	40
580	45
665	50
750	55

TYPE OF MARKING	WIDTH OF LINE	PATTERN	COLOR	SPACING / REMARKS
CENTERLINE ON 2 LANE PAVEMENT	4 (100)	SKIP-DASH	YELLOW	10' (3 m) LINE WITH 30' (9 m) SPACE
CENTERLINE ON MULTI-LANE UNDIVIDED PAVEMENT	2 @ 4 (100)	SOLID	YELLOW	11 (280) C-C
NO PASSING ZONE LINES: FOR ONE DIRECTION FOR BOTH DIRECTIONS	4 (100) 2 @ 4 (100)	SOLID SOLID	YELLOW YELLOW	5 1/2 (140) C-C FROM SKIP-DASH CENTERLINE 11 (280) C-C OMIT SKIP-DASH CENTERLINE BETWEEN
LANE LINES	4 (100) 5 (125) ON FREEWAYS	SKIP-DASH SKIP-DASH	WHITE WHITE	10' (3 m) LINE WITH 30' (9 m) SPACE
DOTTED LINES (EXTENSIONS OF CENTER, LANE OR TURN LANE MARKINGS)	SAME AS LINE BEING EXTENDED	SKIP-DASH	SAME AS LINE BEING EXTENDED	2' (600) LINE WITH 6' (1.8 m) SPACE
EDGE LINES	4 (100)	SOLID	YELLOW-LEFT WHITE-RIGHT	OUTLINE MEDIANS IN YELLOW
TURN LANE MARKINGS	8 (150) LINE; FULL SIZE LETTERS & SYMBOLS (8' (2.4m))	SOLID	WHITE	SEE TYPICAL TURN LANE MARKING DETAIL
TWO WAY LEFT TURN MARKING	2 @ 4 (100) EACH DIRECTION 8' (2.4m) LEFT ARROW	SKIP-DASH AND SOLID IN PAIRS	YELLOW WHITE	10' (3 m) LINE WITH 30' (9 m) SPACE FOR SKIP-DASH; 5 1/2 (140) C-C BETWEEN SOLID LINE AND SKIP-DASH LINE SEE TYPICAL TWO-WAY LEFT TURN MARKING DETAIL
CROSSWALK LINES (PEDESTRIAN) A. DIAGONALS (BIKE & EQUESTRIAN) B. LONGITUDINAL BARS (SCHOOL)	2 @ 6 (150) 12 (300) @ 45° 12 (300) @ 90°	SOLID SOLID SOLID	WHITE WHITE WHITE	NOT LESS THAN 6' (1.8 m) APART 2' (600) APART 2' (600) APART SEE TYPICAL CROSSWALK MARKING DETAILS.
STOP LINES	24 (600)	SOLID	WHITE	PLACE 4' (1.2 m) IN ADVANCE OF AND PARALLEL TO CROSSWALK, IF PRESENT. OTHERWISE, PLACE AT DESIRED STOPPING POINT. PARALLEL TO CROSSROAD CENTERLINE, WHERE POSSIBLE
PAINTED MEDIANS	2 @ 4 (100) WITH 12 (300) DIAGONALS @ 45° NO DIAGONALS USED FOR 4' (1.2 m) WIDE MEDIANS	SOLID	YELLOW: TWO WAY TRAFFIC WHITE: ONE WAY TRAFFIC	11 (280) C-C FOR THE DOUBLE LINE SEE TYPICAL PAINTED MEDIAN MARKING.
GORE MARKING AND CHANNELIZING LINES	8 (200) WITH 12 (300) DIAGONALS @ 45°	SOLID	WHITE	DIAGONALS: 15' (4.5 m) C-C (LESS THAN 30MPH (50 km/h)) 20' (6 m) C-C 30MPH (50 km/h) TO 45MPH (70 km/h) 30' (9 m) C-C (OVER 45MPH (70 km/h))
RAILROAD CROSSING	24 (600) TRANSVERSE LINES; "RR" 15' (4.5 m) LETTERS; 16 (400) LINE FOR "X"	SOLID	WHITE	SEE STATE STANDARD 780001 AREA OF: "R"=3.6 SQ. FT. (0.33 m <sup>2</sup> ) EACH "X"=54.0 SQ. FT. (5.0 m <sup>2</sup> )
SHOULDER DIAGONALS (REQUIRED FOR SHOULDERS > 8')	12 (300) @ 45°	SOLID	WHITE - RIGHT YELLOW - LEFT	50' (15 m) C-C (LESS THAN 30MPH (50 km/h)) 75' (25 m) C-C (30 MPH (50 km/h) TO 45MPH (70 km/h)) 150' (45 m) C-C (OVER 45MPH (70 km/h))
U TURN ARROW	SEE DETAIL	SOLID	WHITE	16.3 SF
2 ARROW COMBINATION LEFT AND U TURN	SEE DETAIL	SOLID	WHITE	30.4 SF

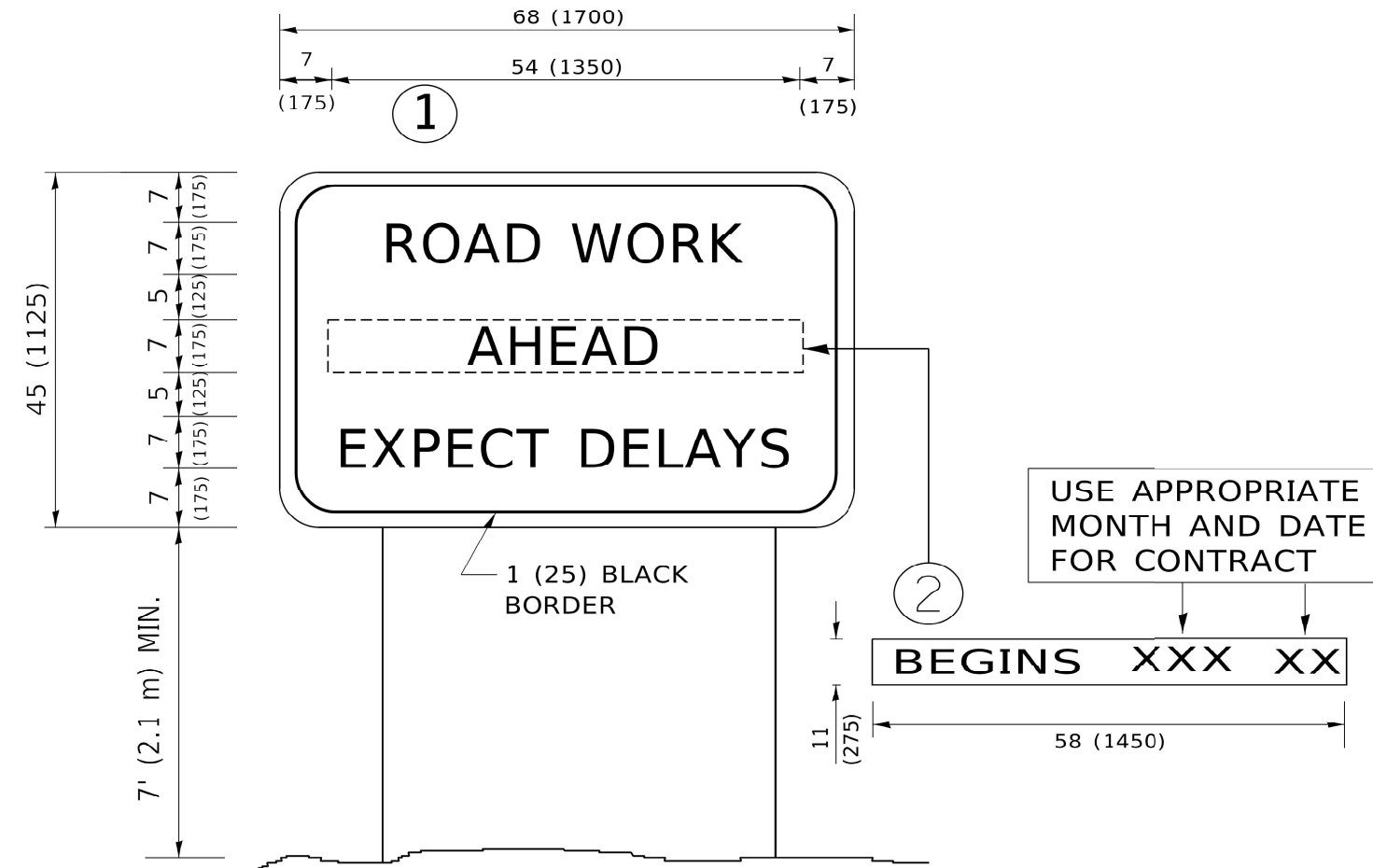
FOR FURTHER DETAILS ON PAVEMENT MARKING REFER TO STANDARD SPECIFICATIONS FOR ROAD AND BRIDGE CONSTRUCTION AND STATE STANDARD 780001.

All dimensions are in inches (millimeters) unless otherwise shown.

MODEL: P:\p\inf\... FILE NAME: P:\p\inf\... MODEL: P:\p\inf\... FILE NAME: P:\p\inf\...





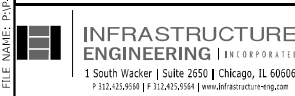


**NOTES:**

1. USE BLACK LETTERING ON ORANGE BACKGROUND.
2. ERECT SIGNS IN ADVANCE OF THE LOCATION FOR THE "ROAD CONSTRUCTION AHEAD" SIGN AT LOCATIONS AS DIRECTED BY THE ENGINEER.
3. ERECT SIGN ① WITH INSTALLED PANEL ② ONE WEEK PRIOR TO THE START OF CONSTRUCTION.
4. REMOVE PANEL ② SOON AFTER THE START OF CONSTRUCTION.
5. SEE SPECIAL PROVISION FOR "TEMPORARY INFORMATION SIGNING" FOR ADDITIONAL INFORMATION.
6. ONE SIGN ASSEMBLY EQUALS 25.70 SQ. FT. (2.3 SQ. M.)
7. SHALL BE PAID FOR AS TEMPORARY INFORMATION SIGNING.

ALL DIMENSIONS ARE IN INCHES (MILLIMETERS) UNLESS OTHERWISE SHOWN.

MODEL: P:\d\inf\...  
 FILE NAME: P:\d\inf\...  
 DATE: 5/16/2022



USER NAME = Alane	DESIGNED - HA	REVISED -
DRAWN - HA	REVISOR -	
CHECKED - ACL	REVISOR -	
DATE - 05/03/2022		

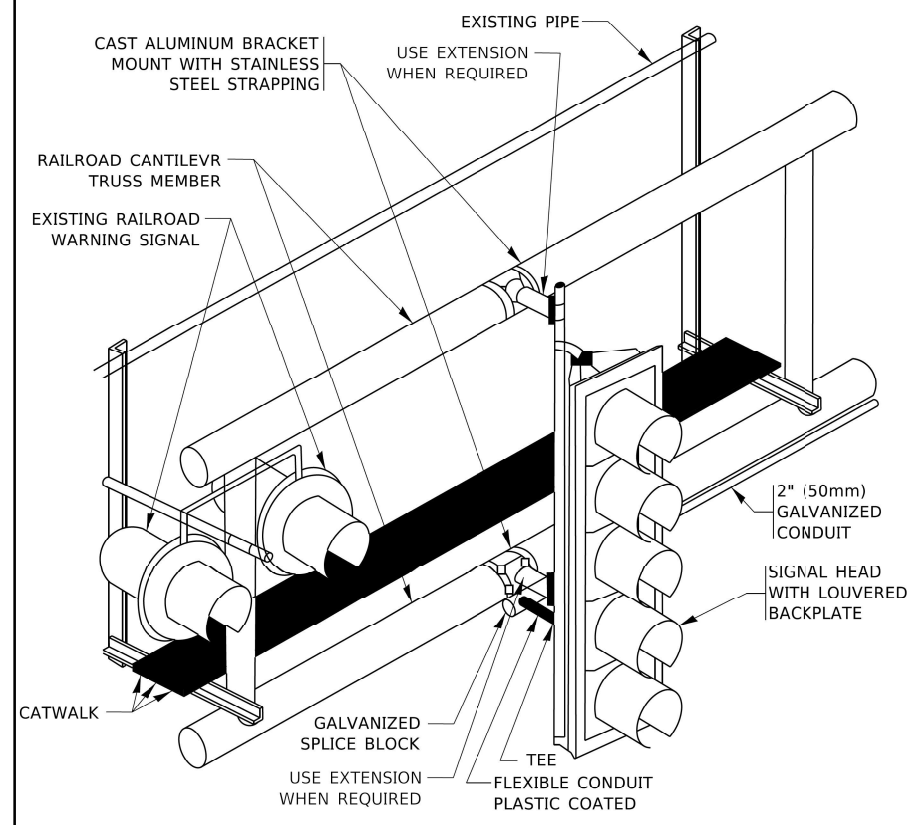
PLOT SCALE = 100,0000 ' / in.
PLOT DATE = 5/16/2022

**STATE OF ILLINOIS**  
**DEPARTMENT OF TRANSPORTATION**

**DISTRICT ONE – ARTERIAL ROAD INFORMATION SIGN (TC-22)**  
 SCALE: NTS      STA.      TO STA.

F.A.P. RTE.	SECTION	COUNTY	TOTAL SHEETS	SHEET NO.
876	2021-050-CIS	COOK & WILL	23	20
CONTRACT NO. 62N48				
ILLINOIS FED. AID PROJECT				

MODEL: P:\dtd\11... FILE NAME: P:\dtd\11... 16/NOV/20 6:24:18 PM... 2020-09-04-00... 100... 2... 11/16/2022



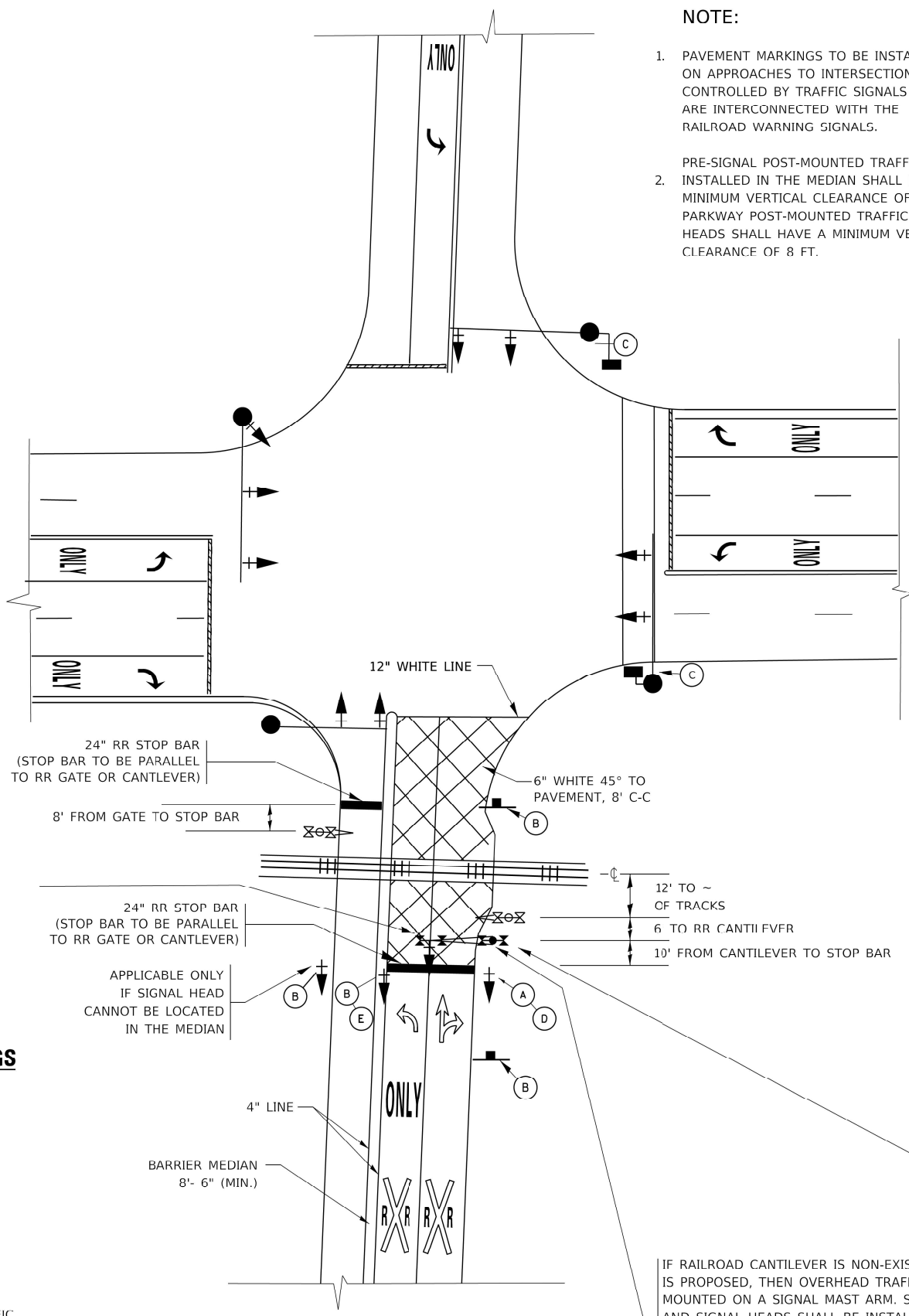
**RAILROAD CANTILEVER SIGNAL HEAD MOUNTING**  
 USE NON-CONDUCTIVE SPACERS BETWEEN THE TRAFFIC SIGNAL EQUIPMENT AND THE RAILROAD CANTILEVER TO PREVENT DISSIMILAR METAL CORROSION  
 N.T.S.

**SIGNING AND PAVEMENT MARKING AT RAILROAD CROSSINGS**

SIGNING AND PAVEMENT MARKING TRAFFIC CONTROL STANDARD (TC-23) HAS BEEN DEVELOPED IN CONSULTATION WITH THE ILLINOIS COMMERCE COMMISSION AND THE U.S. DEPARTMENT OF TRANSPORTATION'S GRADE CROSSING SAFETY TASK FORCE. THIS STANDARD PROVIDES INFORMATION ON UPDATES TO THE PAVEMENT MARKING AND SIGNING DETAILS IN ORDER TO INCORPORATE CHANGES ADOPTED IN THE 2009 NATIONAL MANUAL ON UNIFORM TRAFFIC CONTROL DEVICE (MUTCD). THESE NEW DETAILS HAVE BEEN STUDIED AND TESTED BY THE DEPARTMENT AND ACCEPTED BY THE ILLINOIS COMMERCE COMMISSION.

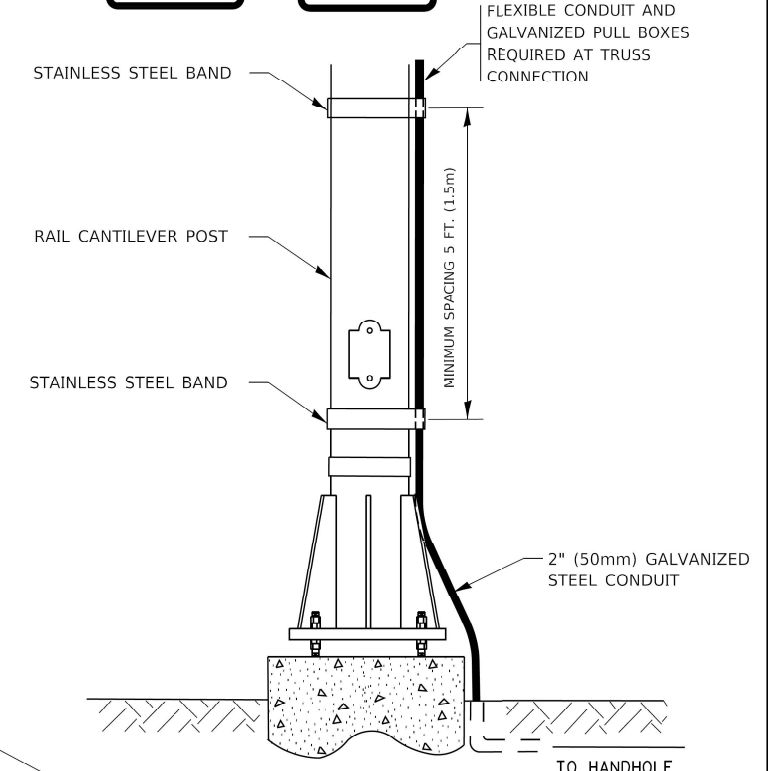
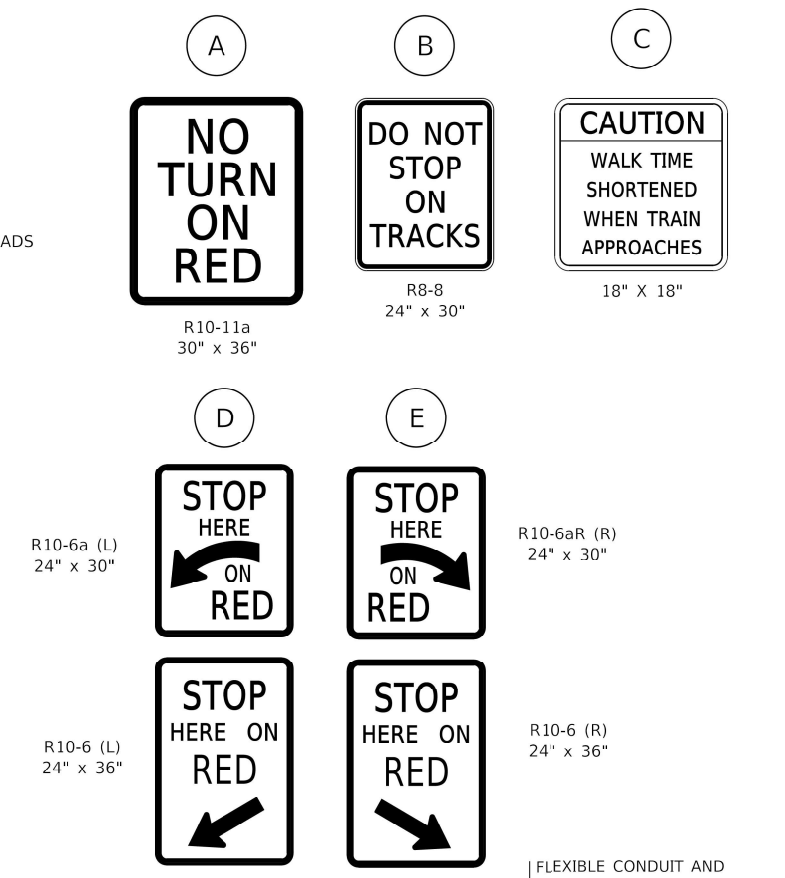
THIS APPLIES TO PROJECTS WHICH INCLUDE RAILROAD INTERCONNECTED TRAFFIC SIGNALS, WITH OR WITHOUT PRE-SIGNALS. THIS STANDARD ALSO APPLIES TO NON-SIGNALIZED INTERSECTIONS THAT ARE WITHIN 81 FEET OF A RAILROAD GRADE CROSSING. THE ILLINOIS SUPPLEMENT TO THE MUTCD SHOULD BE CONSULTED FOR ADDITIONAL INFORMATION ON SIGN REQUIREMENTS AT NON-SIGNALIZED INTERSECTIONS NEAR RAILROAD GRADE CROSSINGS.

THESE DETAILS WILL BE INCLUDED IN A FUTURE UPDATE TO THE BUREAU OF OPERATIONS TRAFFIC POLICIES AND PROCEDURES MANUAL.



**SIGNALIZED INTERSECTION WITH NEAR-SIDE TRAFFIC SIGNAL**

- NOTE:**
- PAVEMENT MARKINGS TO BE INSTALLED ONLY ON APPROACHES TO INTERSECTIONS CONTROLLED BY TRAFFIC SIGNALS WHICH ARE INTERCONNECTED WITH THE RAILROAD WARNING SIGNALS.
  - PRE-SIGNAL POST-MOUNTED TRAFFIC SIGNAL HEADS INSTALLED IN THE MEDIAN SHALL HAVE A MINIMUM VERTICAL CLEARANCE OF 4.5 FT. PARKWAY POST-MOUNTED TRAFFIC SIGNAL HEADS SHALL HAVE A MINIMUM VERTICAL CLEARANCE OF 8 FT.



**SIGNAL CONDUIT CONNECTION TO RAIL CANTILEVER DETAIL**

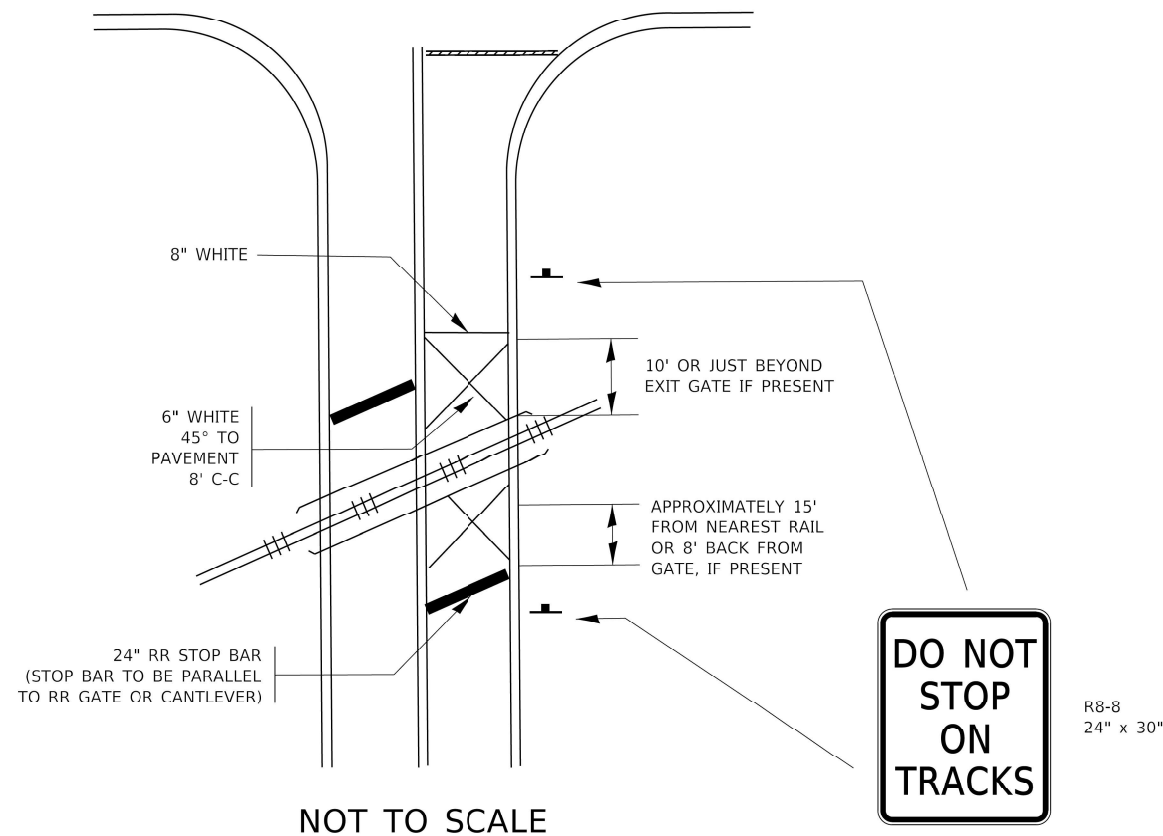
USE NON-CONDUCTIVE SPACERS BETWEEN THE TRAFFIC SIGNAL EQUIPMENT AND THE RAILROAD CANTILEVER TO PREVENT DISSIMILAR METAL CORROSION.

ALL DIMENSIONS ARE IN INCHES (MILLIMETERS) UNLESS OTHERWISE SHOWN.

<p><b>INFRASTRUCTURE ENGINEERING</b>          1 South Wacker   Suite 2650   Chicago, IL 60606          P 312.425.9598   F 312.425.9594   www.infrastructure-eng.com</p>	USER NAME = Alane DESIGNED - HA DRAWN - HA CHECKED - ACL DATE - 05/03/2022	REVISED - REVISED - REVISED -	<b>STATE OF ILLINOIS          DEPARTMENT OF TRANSPORTATION</b>	<b>DISTRICT ONE - TYPICAL SUPPLEMENTAL SIGNING AND PAVEMENT MARKING TREATMENT FOR RAILROAD CROSSINGS (TC-23) (1 OF 2)</b>	F.A.P. RTE. = 876 SECTION = 2021-050-CIS COUNTY = COOK & WILL CONTRACT NO. = 62N48	TOTAL SHEETS = 23 SHEET NO. = 21
	PLOT SCALE = 100,0000' / in. PLOT DATE = 5/16/2022	SCALE: NTS STA. TO STA.			ILLINOIS FED. AID PROJECT	
	THESE DETAILS WILL BE INCLUDED IN A FUTURE UPDATE TO THE BUREAU OF OPERATIONS TRAFFIC POLICIES AND PROCEDURES MANUAL.					

# TYPICAL SUPPLEMENTAL SIGNING AND PAVEMENT MARKING TREATMENT FOR RAILROAD CROSSINGS

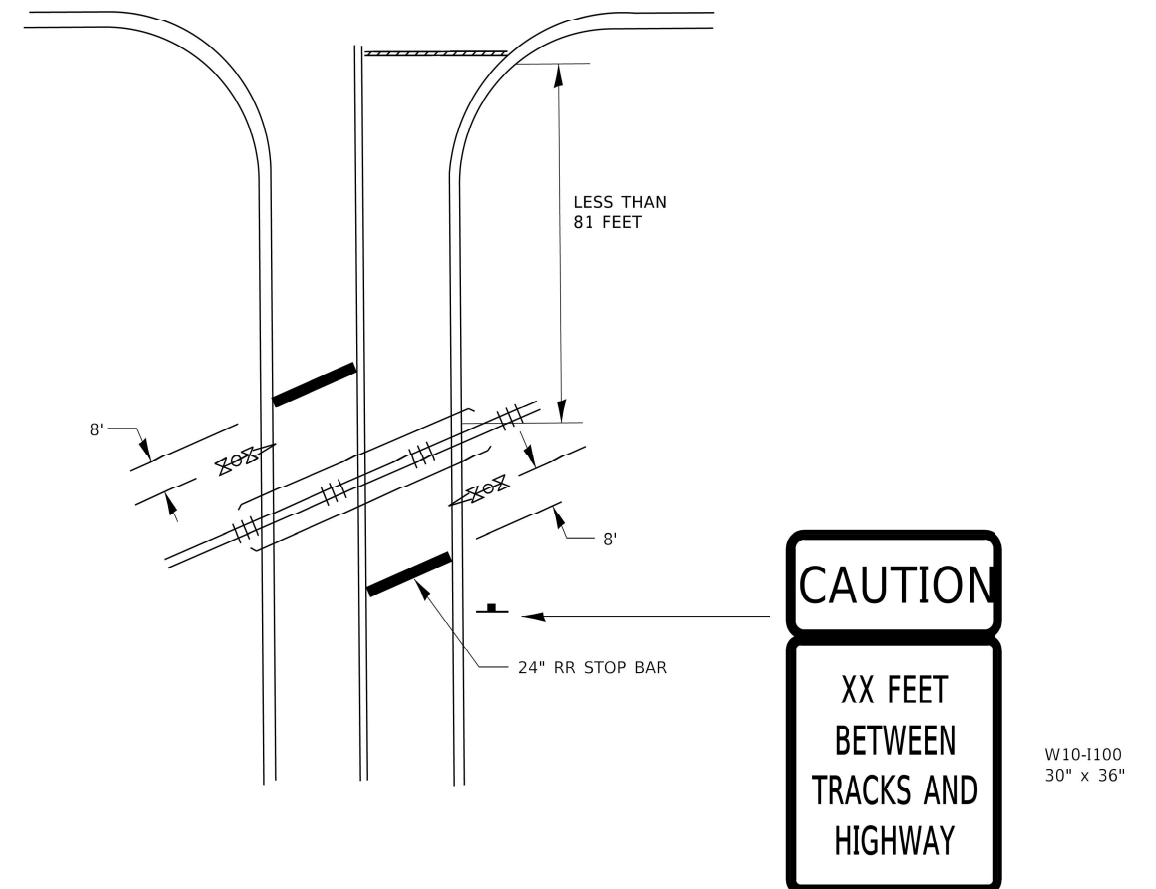
## WITH SIGNALIZED INTERSECTION



### NOTE:

- PAVEMENT MARKINGS TO BE INSTALLED ONLY ON APPROACHES TO INTERSECTIONS CONTROLLED BY TRAFFIC SIGNALS WHICH ARE INTERCONNECTED WITH THE RAILROAD WARNING SIGNALS.
- WHERE NEAR-SIDE TRAFFIC SIGNALS ARE USED THE PAVEMENT MARKINGS EXTEND TO THE INTERSECTION. (SEE DETAIL FOR PRE-SIGNALS).

## WITH NON-SIGNALIZED INTERSECTION 81' OR LESS TO CLOSEST RAIL



### NOTE:

- DISTANCE TO BE SHOWN ON SIGN MEASURED FROM A POINT 6 FEET FROM THE RAIL CLOSEST TO THE INTERSECTION OR FROM THE CLOSEST POINT ALONG THE EXIT GATE IF PRESENT OVER THE ROADWAY WHEN IN THE LOWERED POSITION TO THE STOP BAR OR CROSSWALK, WHICHEVER IS CLOSEST, ROUNDED DOWN TO THE NEAREST 5 FEET. WHERE THERE IS NO STOP LINE, MEASURE TO POINT WHERE DRIVER HAS A VIEW OF APPROACHING TRAFFIC.
- THE CLEARANCE SIGN IS ALSO TO BE USED AS AN INTERIM MEASURE AT LOCATIONS WITH INTERCONNECTED INTERSECTION TRAFFIC SIGNALS WHERE IT IS PLANNED TO CHANGE THEM TO NEAR-SIDE SIGNALS AT A FUTURE TIME. IN THIS CASE, THE DISTANCE TO BE SHOWN ON THE SIGN IS MEASURED FROM THE EDGE OF THE STRIPED-OUT AREA INSTEAD OF 6 FEET FROM THE RAIL. THE SIGN IS TO BE REMOVED WHEN THE NEAR-SIDE SIGNALS ARE INSTALLED AND THE PAVEMENT MARKING EXTEND TO THE INTERSECTION.

ALL DIMENSIONS ARE IN INCHES (MILLIMETERS)  
UNLESS OTHERWISE SHOWN.

MODEL: P:\d4\h1  
FILE NAME: P:\2020\20-094-00 IDOT Various Phase 2 (ITB) 106 Item 161110 20 62N48\DC\CADD\_Sheet\162148\_SHT-STANDARDS-08.dgn

<b>INFRASTRUCTURE ENGINEERING</b> 1 South Wacker   Suite 2650   Chicago, IL 60606 P 312.425.9598   F 312.425.9598   www.infrastructure-eng.com	USER NAME = Alane DESIGNED - HA DRAWN - HA CHECKED - ACL DATE - 05/03/2022	REVISED - REVISED - REVISED -	<b>STATE OF ILLINOIS DEPARTMENT OF TRANSPORTATION</b>	<b>DISTRICT ONE - TYPICAL SUPPLEMENTAL SIGNING AND PAVEMENT MARKING TREATMENT FOR RAILROAD CROSSINGS (TC-23) (2 OF 2)</b>	F.A.P. RTE. = 876 SECTION = 2021-050-CIS COUNTY = COOK & WILL TOTAL SHEETS = 23 SHEET NO. = 22	CONTRACT NO. 62N48 ILLINOIS FED. AID PROJECT
	PLOT SCALE = 100,0000' / in. PLOT DATE = 5/16/2022	SCALE: NTS STA. TO STA.				

