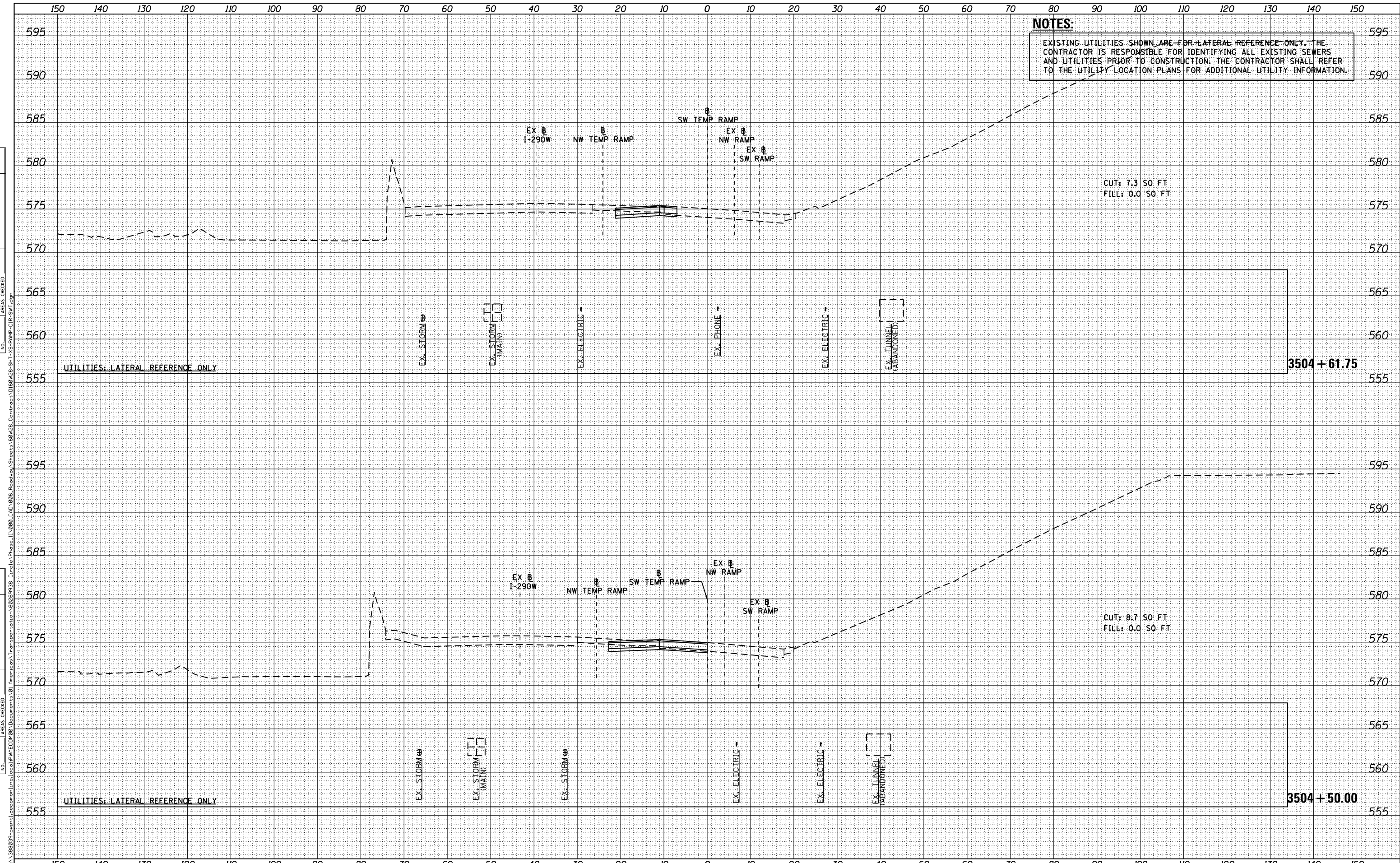


DATE	
BY	
FINAL SURVEY	SURVEYED
NOTE BOOK	PLOTTED
NO.	AREAS CHECKED

DATE	
BY	
ORIGINAL SURVEY	SURVEYED
NOTE BOOK	PLOTTED
NO.	AREAS CHECKED



NOTES:
 EXISTING UTILITIES SHOWN ARE FOR LATERAL REFERENCE ONLY. THE CONTRACTOR IS RESPONSIBLE FOR IDENTIFYING ALL EXISTING SEWERS AND UTILITIES PRIOR TO CONSTRUCTION. THE CONTRACTOR SHALL REFER TO THE UTILITY LOCATION PLANS FOR ADDITIONAL UTILITY INFORMATION.

CUT: 7.3 SO. FT.
 FILL: 0.0 SO. FT.

CUT: 8.7 SO. FT.
 FILL: 0.0 SO. FT.



D160W28-SHT-XS-RAMP-CIR-SWT.dgn
 USER NAME = maronik
 PLOT SCALE = 10.0000' / in.
 PLOT DATE = 4/25/2014

DESIGNED - NWM / AJP
 DRAWN - NWM / AJP
 CHECKED - KAM
 DATE - 04/28/14

REVISED -
 REVISED -
 REVISED -
 REVISED -

STATE OF ILLINOIS
 DEPARTMENT OF TRANSPORTATION

CROSS SECTIONS
 RAMP SW (TEMP)

SCALE: 1:5V, 1:10H SHEET 10 OF 19 SHEETS STA. 3504+50.00 TO STA. 3504+61.75

F.A.I. RTE.	SECTION	COUNTY	TOTAL SHEETS	SHEET NO.
90/94/290	2013-010R	COOK	747	722
				CONTRACT NO. 60W28

ILLINOIS FED. AID PROJECT

FILE PATH = p:\388037-p\m\ascom\line\local\p\AECOM\Documents\01_Americas\Transportation\60289938_Circle Phase II\000_CDD\006_Roadway\Sheets\60W28-SHT-XS-RAMP-CIR-SWT.dgn