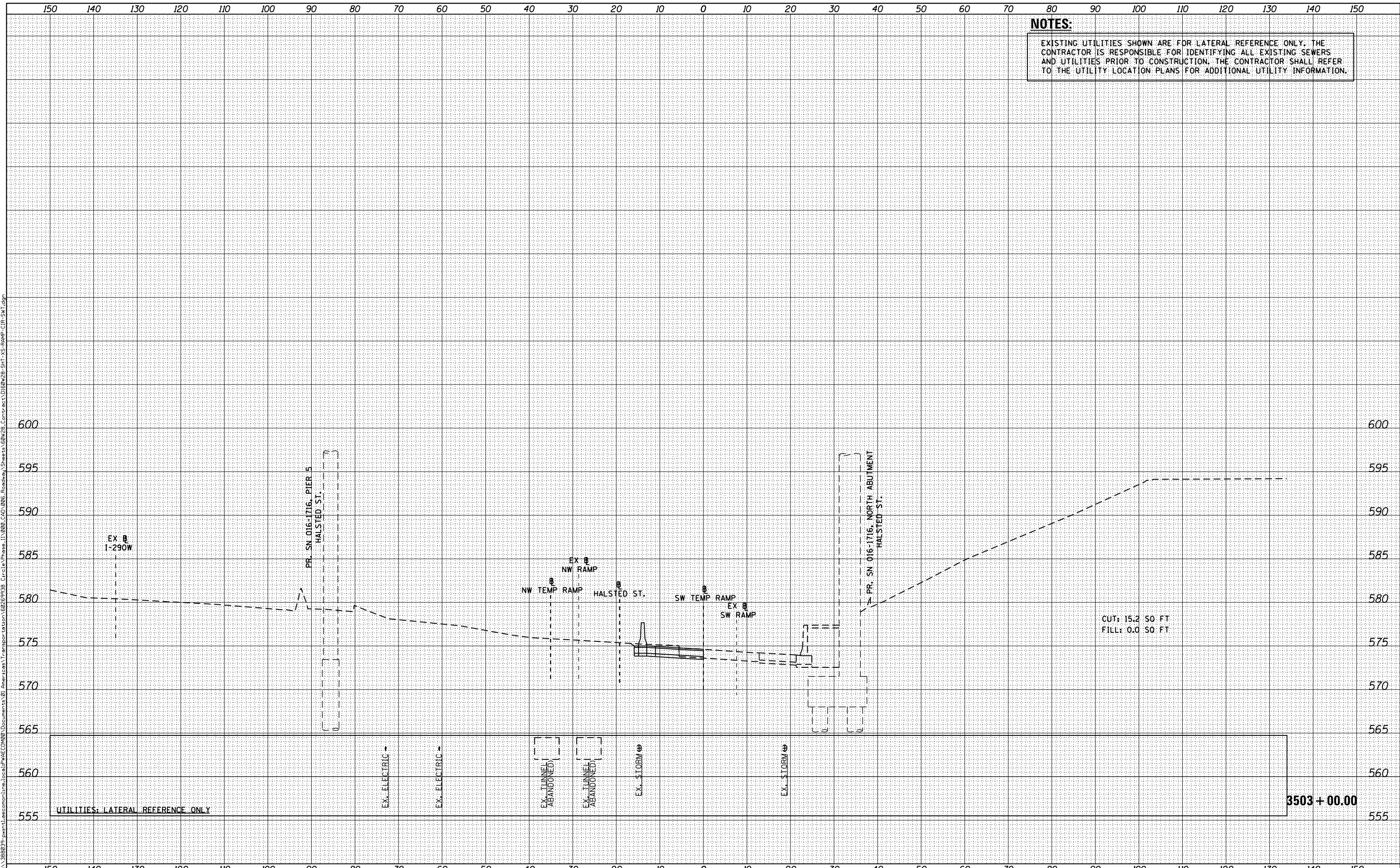


NOTES:
 EXISTING UTILITIES SHOWN ARE FOR LATERAL REFERENCE ONLY. THE CONTRACTOR IS RESPONSIBLE FOR IDENTIFYING ALL EXISTING SEWERS AND UTILITIES PRIOR TO CONSTRUCTION. THE CONTRACTOR SHALL REFER TO THE UTILITY LOCATION PLANS FOR ADDITIONAL UTILITY INFORMATION.

DATE	
BY	
FINAL SURVEY	
SURVEYED	
PLOTTED	
TEMPLATE	
AREAS CHECKED	
NO.	

DATE	
BY	
ORIGINAL SURVEY	
SURVEYED	
PLOTTED	
TEMPLATE	
AREAS CHECKED	
NO.	



AECOM
 303 EAST WACKER DRIVE, SUITE 1400
 CHICAGO, IL 60601-5276
 PHONE: (312) 373-7700 FAX: (312) 373-6800

D160W28-SHT-XS-RAMP-CIR-SWT.dgn
 USER NAME = maronik
 PLOT SCALE = 10.0000' / in.
 PLOT DATE = 4/25/2014

DESIGNED -	NWM / AJP	REVISED -	
DRAWN -	NWM / AJP	REVISED -	
CHECKED -	KAM	REVISED -	
DATE -	04/28/14	REVISED -	

**STATE OF ILLINOIS
 DEPARTMENT OF TRANSPORTATION**

**CROSS SECTIONS
 RAMP SW (TEMP)**

SCALE: 1:5V, 1:10H SHEET 7 OF 19 SHEETS STA. 3503+00.00 TO STA. 3503+00.00

F.A.I. RTE.	SECTION	COUNTY	TOTAL SHEETS	SHEET NO.
90/94/290	2013-010R	COOK	747	719
CONTRACT NO. 60W28				
ILLINOIS FED. AID PROJECT				