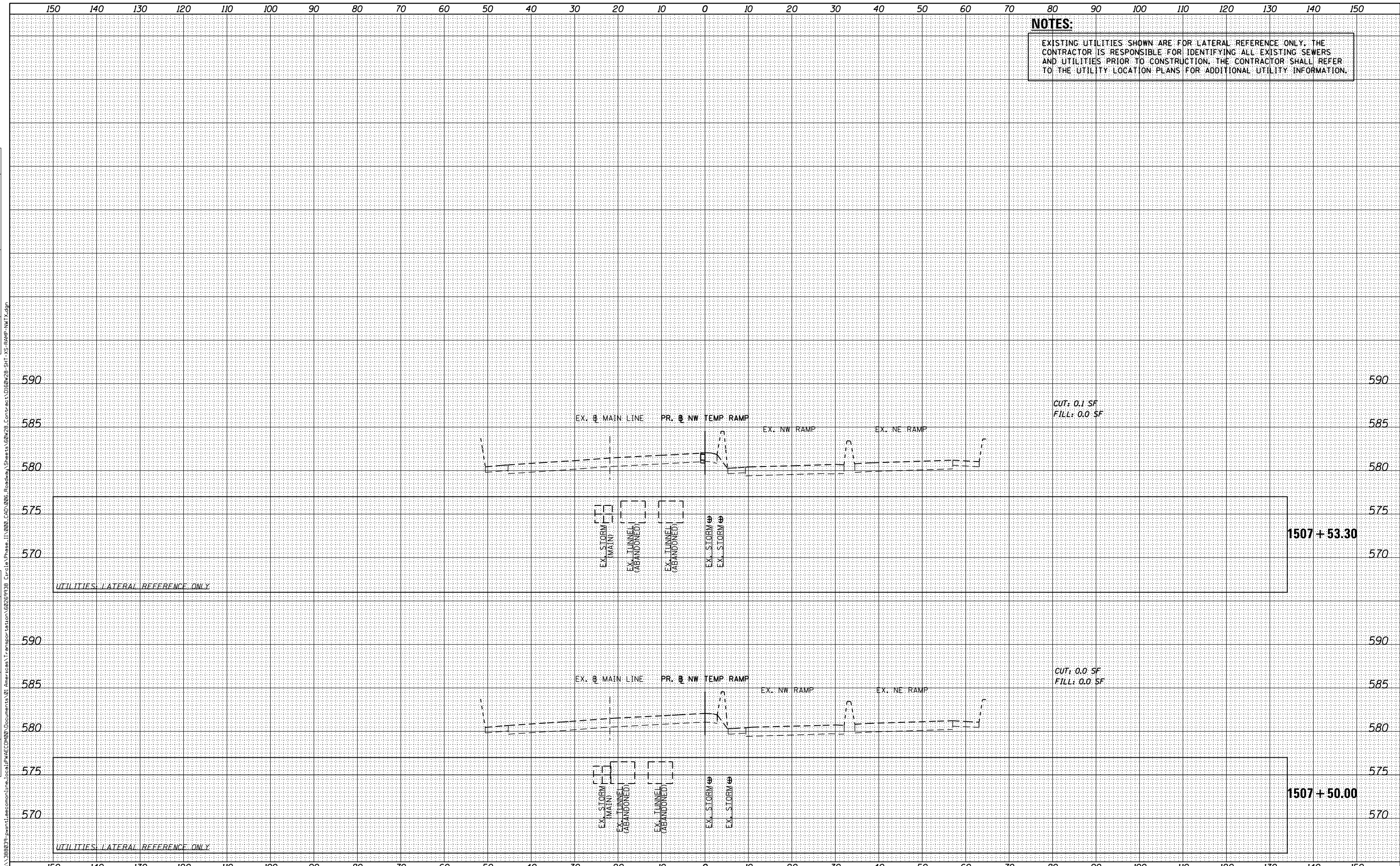


NOTES:

EXISTING UTILITIES SHOWN ARE FOR LATERAL REFERENCE ONLY. THE CONTRACTOR IS RESPONSIBLE FOR IDENTIFYING ALL EXISTING SEWERS AND UTILITIES PRIOR TO CONSTRUCTION. THE CONTRACTOR SHALL REFER TO THE UTILITY LOCATION PLANS FOR ADDITIONAL UTILITY INFORMATION.

FINAL SURVEY	SURVEYED	DATE
NOTE BOOK	PLOTTED	
NO.	TEMPLATE	
	AREAS CHECKED	

ORIGINAL SURVEY	SURVEYED	DATE
NOTE BOOK	PLOTTED	
NO.	TEMPLATE	
	AREAS CHECKED	



D160W28-SHT-XS-RAMP-NW.TX.dgn	DESIGNED -	NWMP / AJP	REVISED -
USER NAME = maronik	DRAWN -	NWMP / AJP	REVISED -
PLOT SCALE = 10.0000' / in.	CHECKED -	KMM	REVISED -
PLOT DATE = 4/25/2014	DATE -	04/28/14	REVISED -

**STATE OF ILLINOIS
DEPARTMENT OF TRANSPORTATION**

CROSS SECTIONS RAMP NW (NB TEMP)	
SCALE: 1:5V,1:10H	SHEET 1 OF 8 SHEETS
STA. 1507+50.00	TO STA. 1507+53.30

F.A.I. RTE.	SECTION	COUNTY	TOTAL SHEETS	SHEET NO.
90/94/290	2013-010R	COOK	747	697
CONTRACT NO. 60W28			ILLINOIS FED. AID PROJECT	