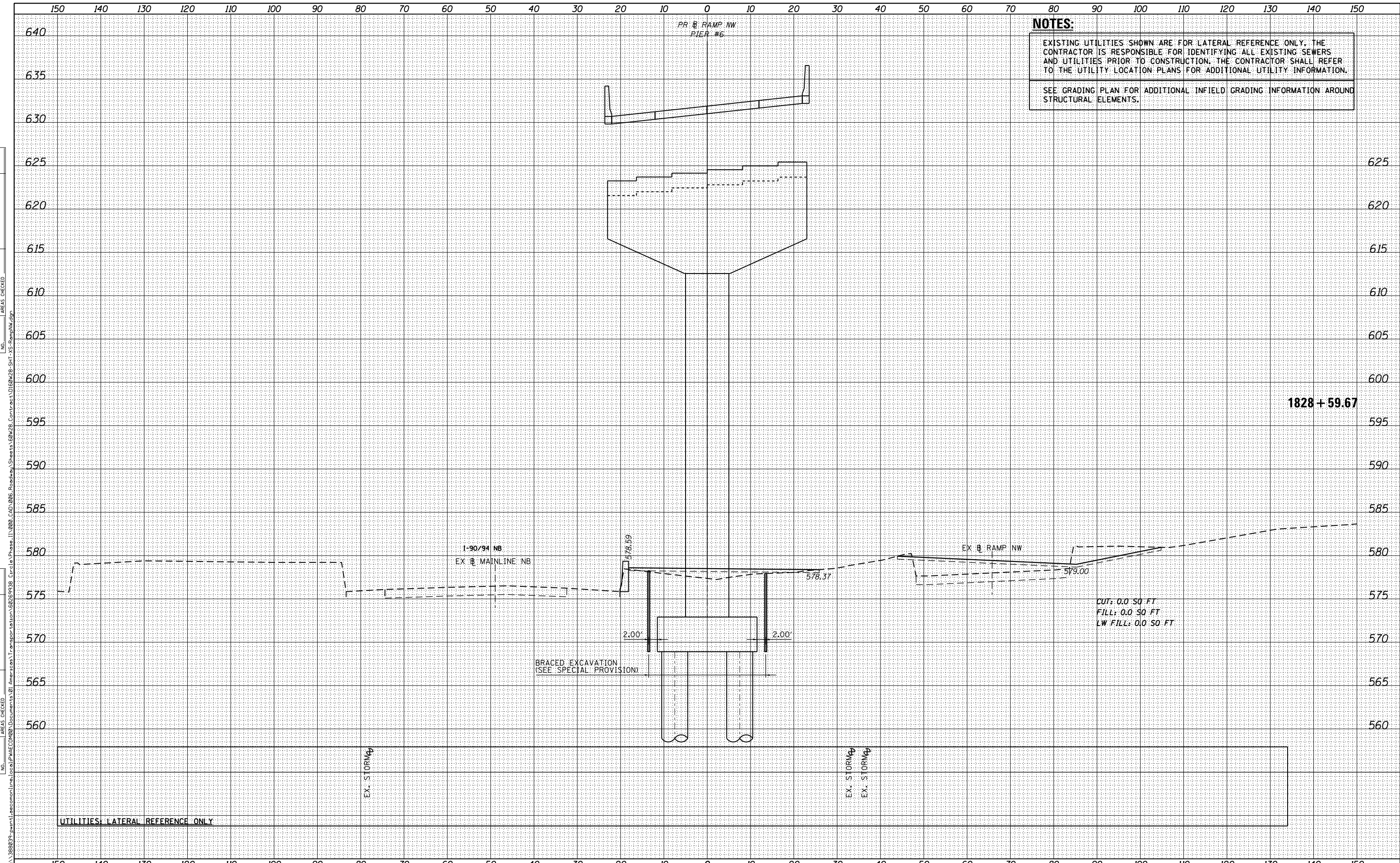


DATE	
BY	
ORIGINAL SURVEY	
SURVEYED	
PLOTTED	
TEMPLATE	
AREAS	
CHECKED	
NO.	

DATE	
BY	
ORIGINAL SURVEY	
SURVEYED	
PLOTTED	
TEMPLATE	
AREAS	
CHECKED	
NO.	



AECOM
 303 EAST WACKER DRIVE, SUITE 1400
 CHICAGO, IL 60601-5276
 PHONE: (312) 373-7700 FAX: (312) 373-6800

D160W28-SHT-XS-RampNW.dgn	DESIGNED - NMM / AJP	REVISED -
USER NAME = maronik	DRAWN - NMM / AJP	REVISED -
PLOT SCALE = 10.0000' / in.	CHECKED - K&R	REVISED -
PLOT DATE = 4/25/2014	DATE - 04/28/14	REVISED -

**STATE OF ILLINOIS
 DEPARTMENT OF TRANSPORTATION**

CROSS SECTIONS RAMP NW			
SCALE: 1:5V,1:10H	SHEET 29	OF 51 SHEETS	STA. 1828+59.67 TO STA. 1828+59.67

F.A.I. RTE.	SECTION	COUNTY	TOTAL SHEETS	SHEET NO.
90/94/290	2013-010R	COOK	747	674
CONTRACT NO. 60W28				ILLINOIS FED. AID PROJECT