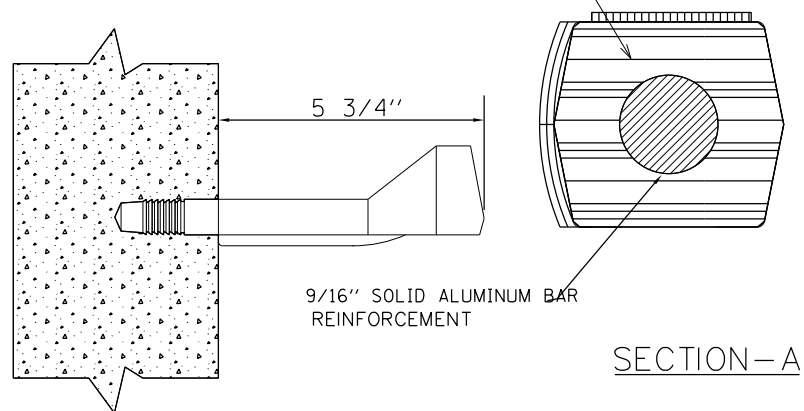


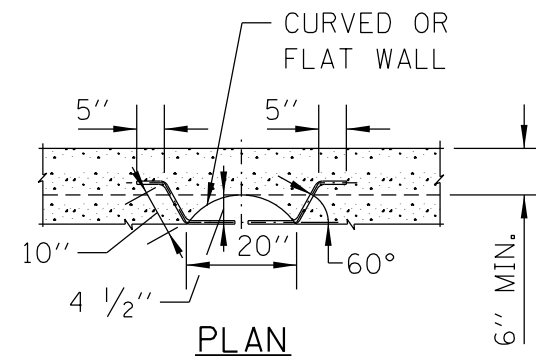
COPOLYMER POLYPROPYLENE PLASTIC



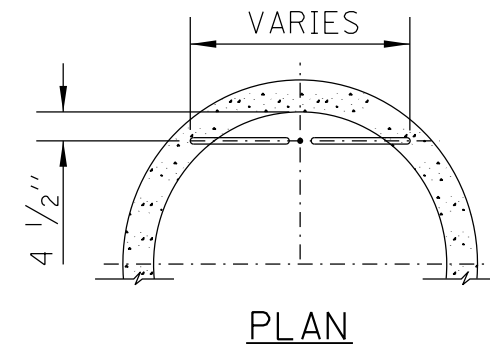
STEP LADDER RUNG

NOTES:

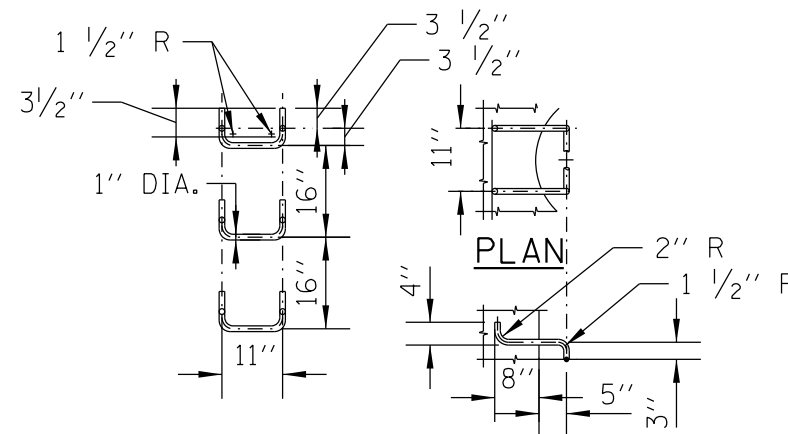
1. VERTICAL SPACING = 16" O.C., ON VERTICAL WALL ONLY.
2. STEPS TO PROTRUDE MINIMUM 5" FROM FACE OF STRUCTURE WALL.
3. STEPS SHALL MEET THE REQUIREMENTS OF ASTM C478 IN ADDITION TO A HORIZONTAL PULL-OUT LOAD OF 1000 LBS. WHEN INSTALLED.
4. ALL STEPS SHALL BE VERTICALLY ALIGNED IN A STRAIGHT LINE.
5. NO STEPS LOCATED INSIDE MANHOLE CHIMNEY.
6. MINIMUM CONCRETE STRENGTH MUST BE 3000 PSI
7. HOLES- PREFORMED/DRILLED
 - A. HOLES MUST BE PARALLEL
 - B. HOLES MUST BE 10" CENTERED, 1" DIAMETER
 - C. MINIMUM DEPTH- 3 1/2" TO 3 3/4"



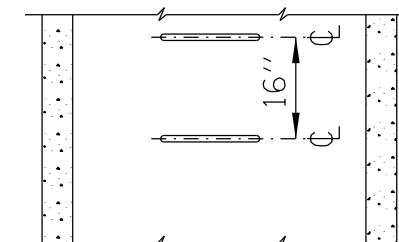
ELEVATION
TYPE X



ELEVATION
TYPE Y



SPACING ELEVATION
HANDHOLD-TYPE Z RUNG



PERCENT COMPLETE	DATE	CITY OF CHICAGO DEPARTMENT OF WATER MANAGEMENT BUREAU OF ENGINEERING SERVICES		DRAWN: SB#
30	1/22/14	LADDER RUNGS		DESIGNED:
60				CHECKED:
75				REVIEWED:
90				OF
100				A.17
BULLETIN				

STATE OF ILLINOIS DEPARTMENT OF TRANSPORTATION		CHICAGO DEPARTMENT OF WATER MANAGEMENT STANDARD DETAILS		F.A.I. RTE.	SECTION	COUNTY	TOTAL SHEETS	SHEET NO.
SCALE: NTS		SHEET 8 OF 8 SHEETS		90/94/290	2013-010R	COOK	747	644
		STA. TO STA.		ILLINOIS FED. AID PROJECT		CONTRACT NO. 60W28		

FILE PATH = C:\Users\chunh\Desktop\60W28-CRHP-DI60W28-sht-CDWM-Detail-08.dgn



DI60W28-sht-CDWM-Detail-08.dgn
USER NAME = chunh
PLOT SCALE = 1:8000 / 1"=80'
PLOT DATE = 3/25/2014

DESIGNED -
DRAWN -
CHECKED -
DATE - 03/28/14

REVISED -
REVISED -
REVISED -
REVISED -

STATE OF ILLINOIS
DEPARTMENT OF TRANSPORTATION

CHICAGO DEPARTMENT OF WATER MANAGEMENT
STANDARD DETAILS

F.A.I. RTE. 90/94/290
SECTION 2013-010R
COUNTY COOK
TOTAL SHEETS 747
SHEET NO. 644
CONTRACT NO. 60W28
ILLINOIS FED. AID PROJECT