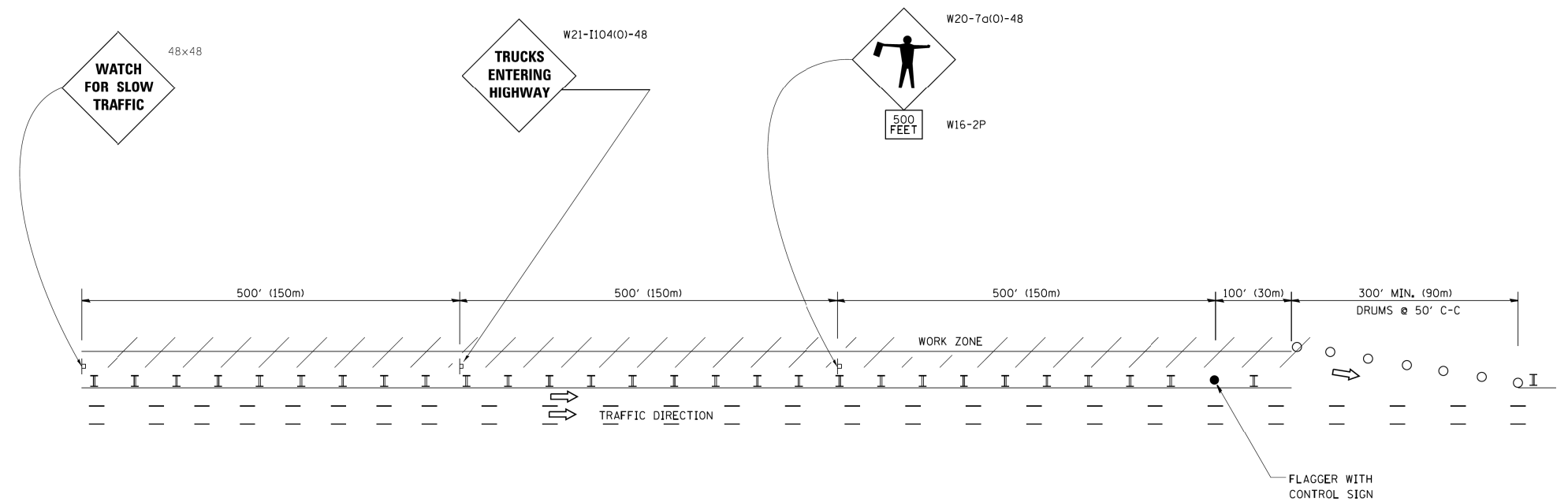
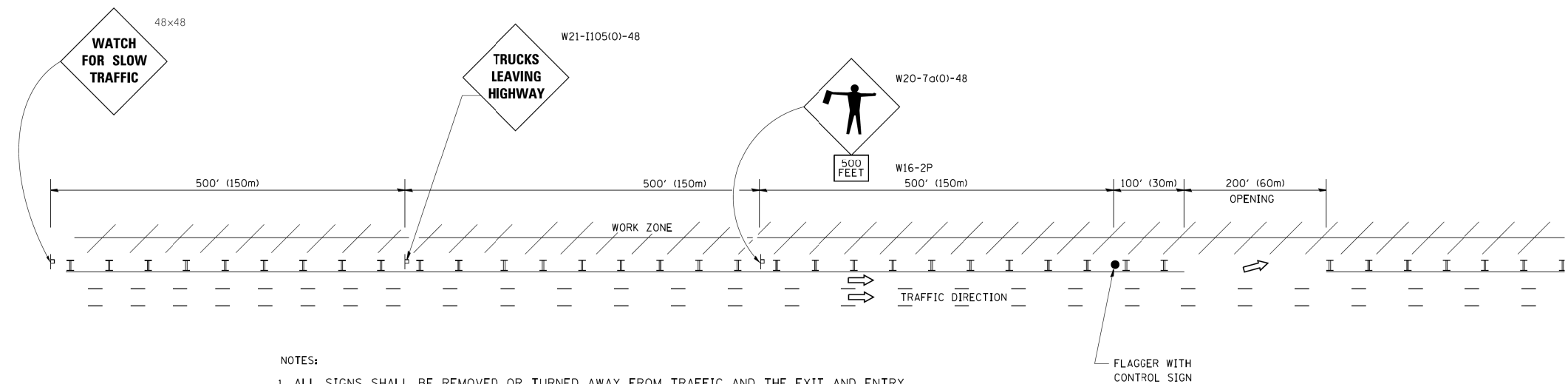


SIGNING FOR FLAGGING OPERATIONS AT WORK ZONE OPENINGS

WORK ZONE EXIT OPENING



WORK ZONE ENTRY OPENING



NOTES:

1. ALL SIGNS SHALL BE REMOVED OR TURNED AWAY FROM TRAFFIC AND THE EXIT AND ENTRY OPENINGS SHALL BE CLOSED WHEN THE FLAGGING OPERATION CEASES. NON OPERATING EQUIPMENT SHALL COMPLY WITH ARTICLE 701.11
2. WORK ZONE OPENINGS SHALL BE A MINIMUM OF ONE HALF MILE APART AND A MINIMUM OF ONE QUARTER MILE FROM ALL ENTRANCE AND EXIT RAMP.
3. EXITING THE WORK ZONE AT ANY PLACE OTHER THAN AT A WORK ZONE EXIT OPENING WILL BE PROHIBITED.
4. ALL VEHICLES SHALL ENTER THE WORK ZONE AT ENTRY OPENINGS, USING THEIR TURN SIGNALS TO WARN MOTORISTS
5. FLAGGERS SHALL NOT STOP TRAFFIC OR DIRECT TRAFFIC INTO AN ADJACENT LANE.

ALL DIMENSIONS ARE IN INCHES (MILLIMETERS) UNLESS OTHERWISE SHOWN

FILE PATH = C:\Projectbase\14-0323 - W28 Final PDFs\0160W28-SHT-D1-Detail-TC-181.dgn



D160W28-SHT-D1-Detail-TC-181.dgn  
 USER NAME = auyeungh  
 PLOT SCALE = 50.000' / in.  
 PLOT DATE = 3/24/2014

DESIGNED -	REVISOR	J.A.F. 02-06
DRAWN -	REVISOR	S.P.B. 01-07
CHECKED -	REVISOR	S.P.B. 12-09
DATE -	REVISOR	M.D. 06-13

STATE OF ILLINOIS  
 DEPARTMENT OF TRANSPORTATION

FREEWAY/EXPRESSWAY SIGNING FOR FLAGGING OPERATIONS  
 AT WORK ZONE OPENINGS ON FREEWAYS/EXPRESSWAYS

SCALE: SHEET 32 OF 40 SHEETS STA. TO STA.

F.A.I. RTE.	SECTION	COUNTY	TOTAL SHEETS	SHEET NO.
90/94/290	2013-010R	COOK	747	616
TC-18			CONTRACT NO. 60W28	
FED. ROAD DIST. NO. 1 ILLINOIS FED. AID PROJECT				