

GROUND IMPROVEMENT PERFORMANCE REQUIREMENTS

Equivalent Uniform Service Bearing Pressure shall be interpolated between the values shown.

The Shop Drawings and construction procedures submittal shall indicate the sequence of construction within the limits of Aggregate Column Ground Improvement. The aggregate column installation shall be coordinated with existing utilities, existing structural removals, and proposed utility installation.

Settlement during construction shall not exceed 3 inches, and settlement after completion of the wall and anchorage slab shall not exceed 1 inch.

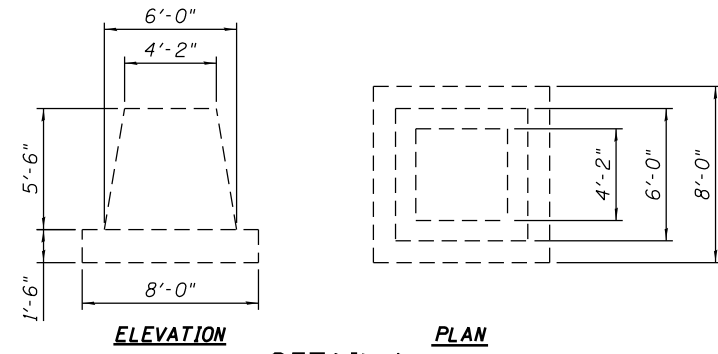
Minimum factor of safety for Equivalent Uniform Service Bearing Pressure shall be 2.5.

Notes:

Aggregate column ground improvement shall be designed and installed by the Contractor in accordance with special provision for Aggregate Column Ground Improvement.

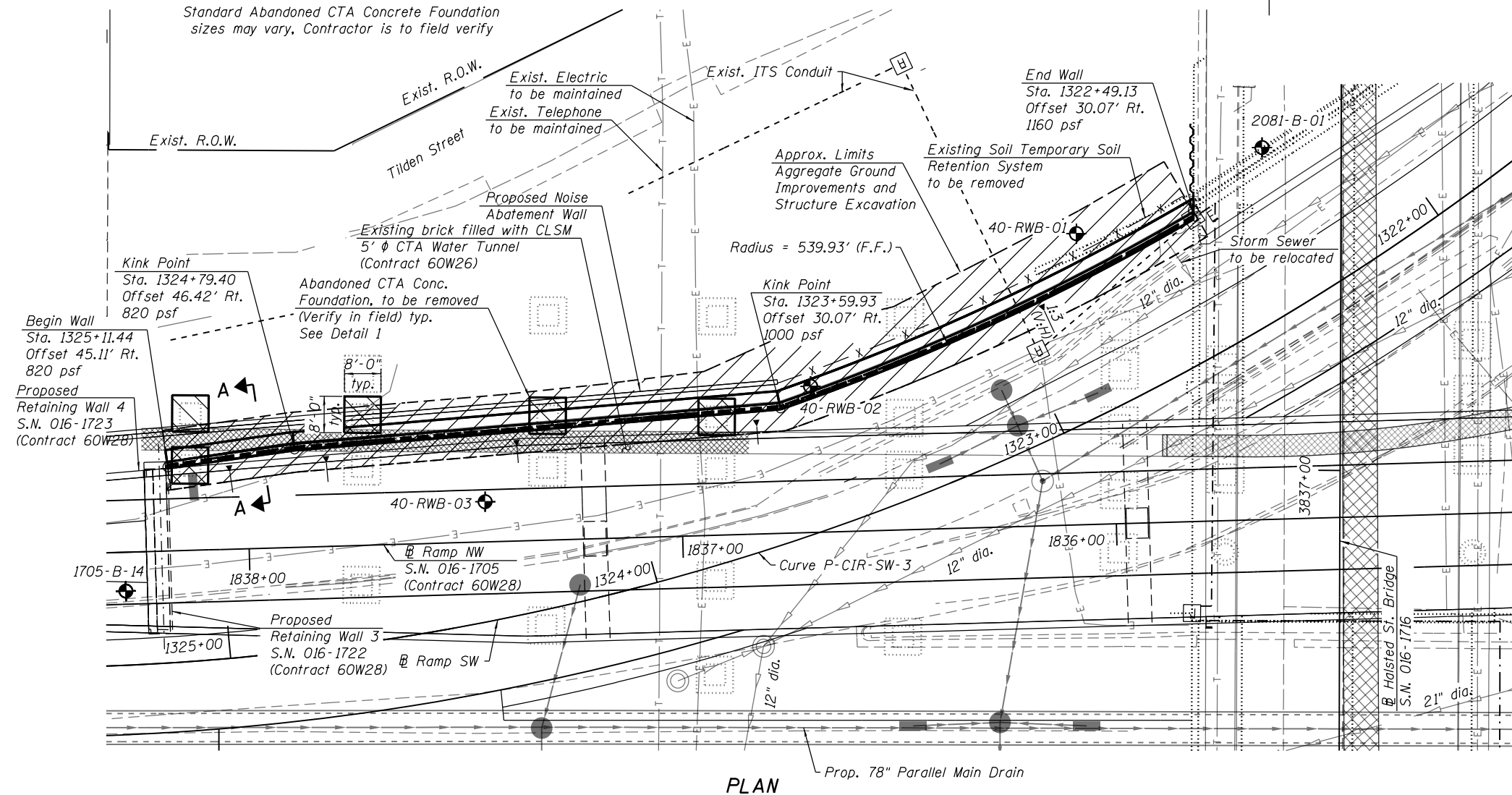
Within the Limits of Structure Excavation, depth of the aggregate column for Aggregate Column Ground Improvement will be measured from Top of Leveling Pad to Bottom of the Aggregate Column.

The Contractor shall field verify location of existing underground utilities. The Contractor shall take all precautions to protect existing utilities during construction of the wall. Any damages to the existing utilities shall be the responsibility of the Contractor.

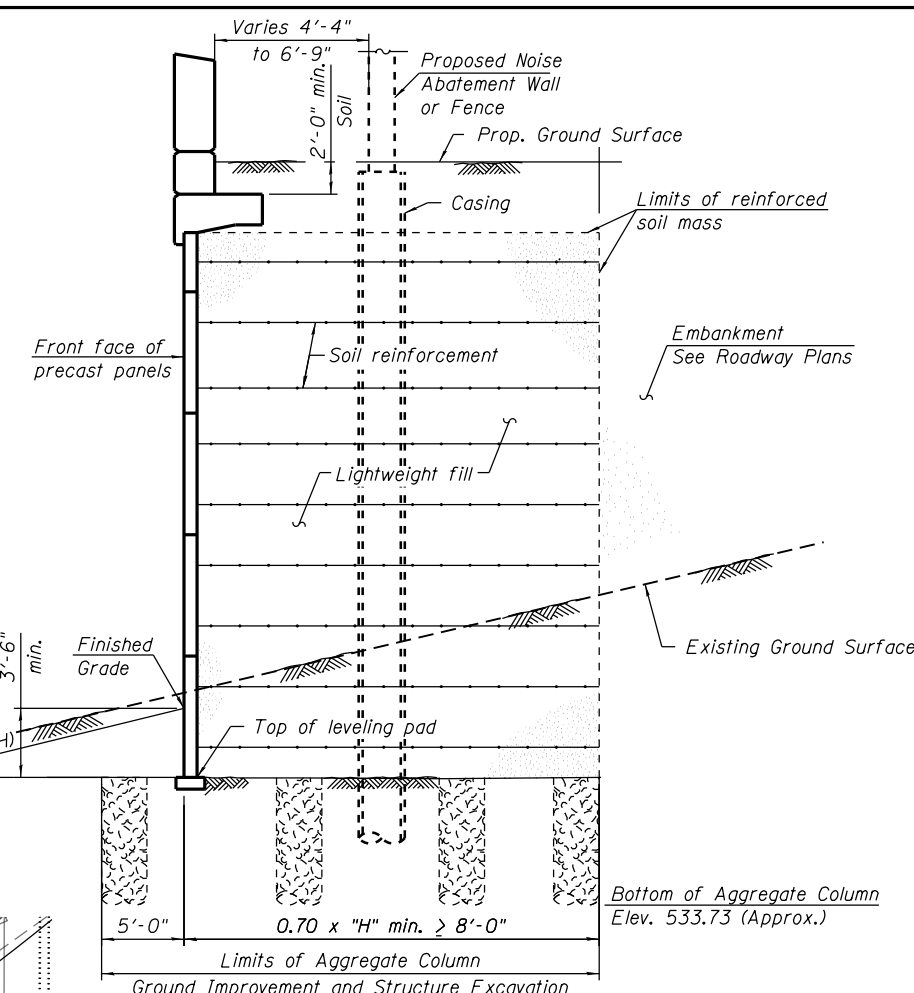


DETAIL 1
ELEVATION PLAN

Standard Abandoned CTA Concrete Foundation sizes may vary, Contractor is to field verify



PLAN



SECTION A-A

LEGEND

- Boring
- Aggregate Column Ground Improvement
- Foundation Removal

BILL OF MATERIAL

Item	Unit	Total
Aggregate Column Ground Improvement	L. Sum	0.1
Foundation Removal	Cu. Yd.	45

955615 AM - c:\pwworking\king_aecom\00\khastings\0264557\016809-60W26-506-groundimpr.ov.dgn



USER NAME = khastings	DESIGNED - KAH	REVISED -
PLOT SCALE = 384.00' / ft.	CHECKED - DL	REVISED -
PLOT DATE = 4/28/2014	DRAWN - RLS	REVISED -
	CHECKED - DL	REVISED -

**STATE OF ILLINOIS
DEPARTMENT OF TRANSPORTATION**

**AGGREGATE COLUMN GROUND IMPROVEMENT DETAILS
STRUCTURE NO. 016-1809**

SHEET NO. RW40-06 OF RW40-12 SHEETS

F.A.I. RTE. 90/94	SECTION 2013-010R	COUNTY COOK	TOTAL SHEETS 747	SHEET NO. 573
CONTRACT NO. 60W28			ILLINOIS FED. AID PROJECT	