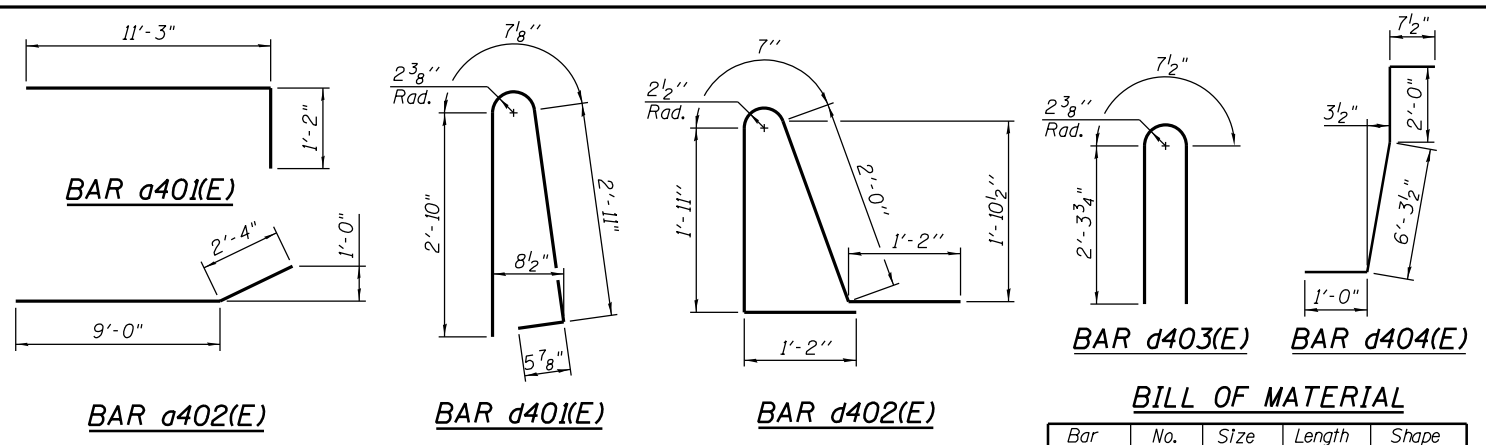


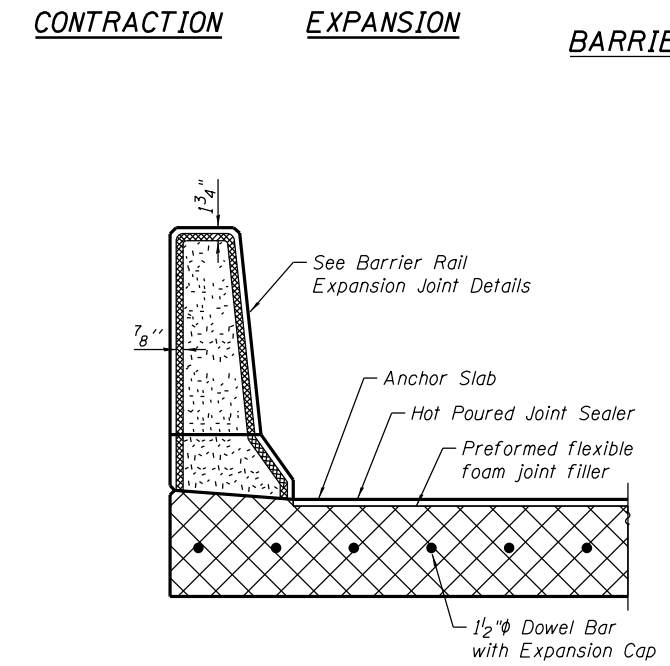
CONTRACTION EXPANSION

BARRIER RAIL JOINT DETAILS

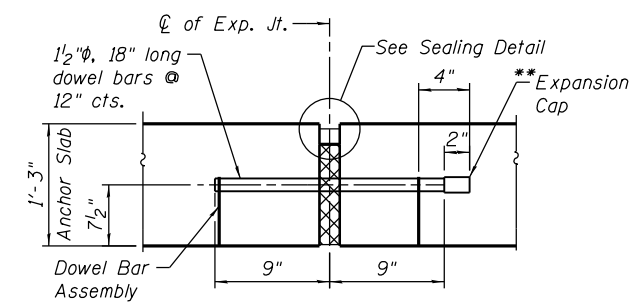


BILL OF MATERIAL

Bar	No.	Size	Length	Shape
a401(E)	102	#7	12'-5"	—
a402(E)	77	#4	11'-4"	—
a403(E)	35	#8	2'-6"	—
a404(E)	6	#7	4'-0"	—
b401(E)	14	#4	29'-8"	—
b402(E)	28	#4	23'-9"	—
b403(E)	10	#4	29'-8"	—
b404(E)	30	#4	16'-8"	—
d401(E)	86	#6	6'-10"	—
d402(E)	86	#6	6'-10"	—
d403(E)	42	#6	5'-3"	—
d404(E)	7	#6	9'-11"	—
d405(E)	7	#6	8'-6"	—
d406(E)	7	#6	9'-3"	—
d407(E)	7	#6	7'-9"	—
d408(E)	7	#6	8'-4"	—
d409(E)	7	#6	9'-1"	—
d410(E)	287	#5	4'-6"	—
d411(E)	264	#5	4'-6"	—
d412(E)	551	#9	12'-5"	—
d413(E)	551	#9	12'-2"	—
e401(E)	14	#4	15'-5"	—
e402(E)	14	#4	14'-7"	—
e403(E)	6	#4	14'-8"	—
e404(E)	12	#4	14'-8"	—
e405(E)	1	#8	31'-2"	—
e406(E)	2	#8	25'-10"	—
e407(E)	1	#4	31'-2"	—
e408(E)	3	#4	16'-8"	—
e409(E)	44	#4	25'-6"	—
e410(E)	132	#4	31'-8"	—
h401(E)	42	#5	32'-1"	—
h402(E)	28	#5	31'-5"	—
h403(E)	30	#5	32'-2"	—
p401(E)	15	#5	18'-4"	—
p402(E)	40	#5	24'-11"	—
p403(E)	54	#5	7'-10"	—
p404(E)	15	#5	6'-10"	—
p405(E)	12	#5	5'-10"	—
p406(E)	3	#5	5'-7"	—
p407(E)	6	#5	5'-0"	—
p408(E)	3	#5	3'-10"	—
p409(E)	8	#4	25'-6"	—
p410(E)	24	#4	31'-8"	—
p411(E)	3	#5	1'-4"	—
p412(E)	3	#5	2'-2"	—
s401(E)	198	#4	9'-4"	—
s402(E)	198	#4	5'-4"	—
u401(E)	3	#5	6'-11"	—
u402(E)	3	#5	8'-7"	—
v401(E)	92	#4	16'-9"	—
v402(E)	62	#4	7'-5"	—
Reinforcement Bars, Epoxy Coated		Pound	68,860	

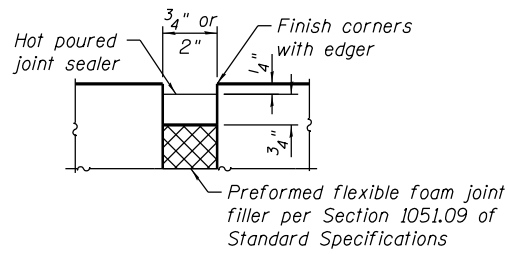


TRANSVERSE EXPANSION JOINT SECTION

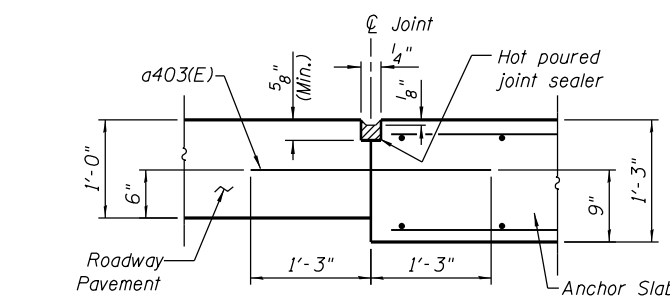


ANCHOR SLAB TO ANCHOR SLAB TRANSVERSE EXPANSION JOINT

(Expansion Joint filler, sealer and Dowel Bars included in cost of Concrete Superstructure.)
 **Expansion caps shall be installed on the exposed end of each dowel bar once header has been removed and the joint filler material has been installed.

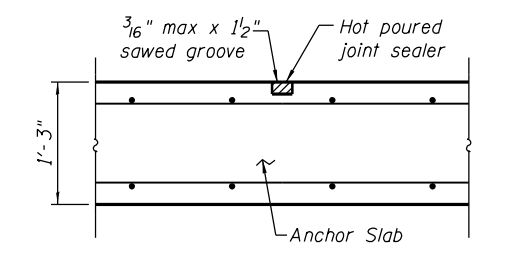


SEALING DETAIL



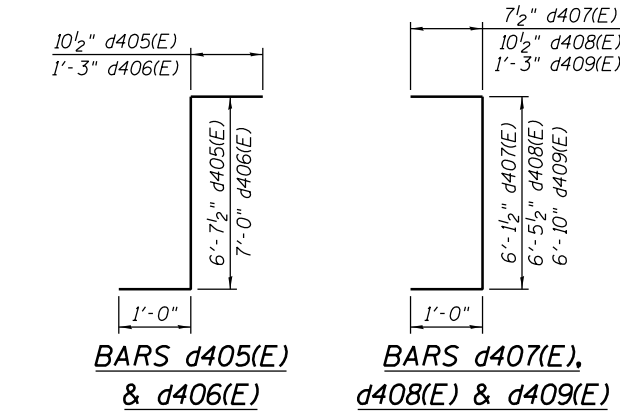
LONGITUDINAL CONSTRUCTION JOINT

See Article 420.05 & 420.12 of the Standard Specifications

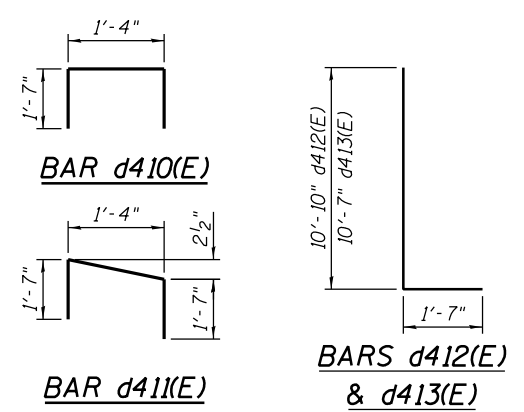


TRANSVERSE CONTRACTION JOINT

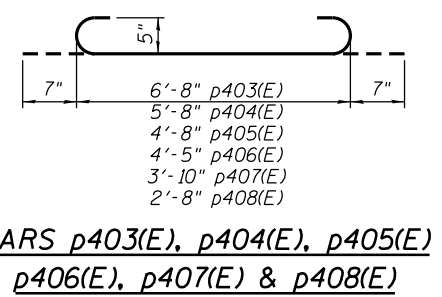
See Article 420.05 & 420.12 of the Standard Specifications



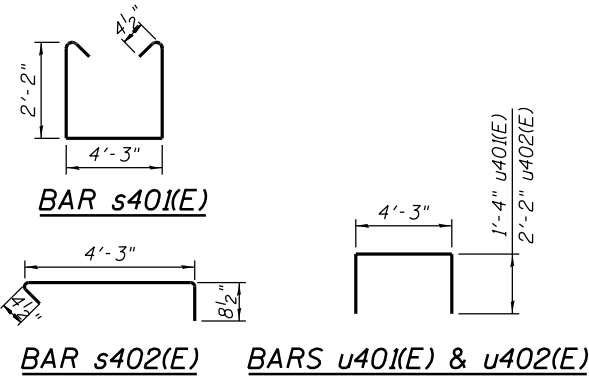
BARS d405(E) & d406(E) BARS d407(E), d408(E) & d409(E)



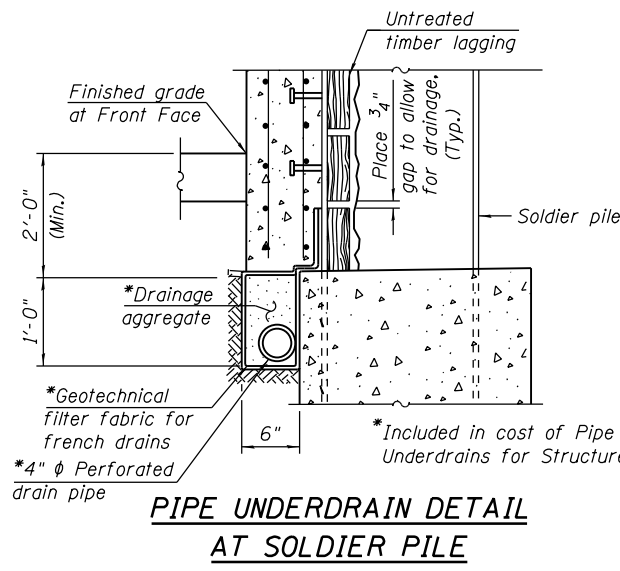
BAR d410(E) BAR d411(E) BARS d412(E) & d413(E)



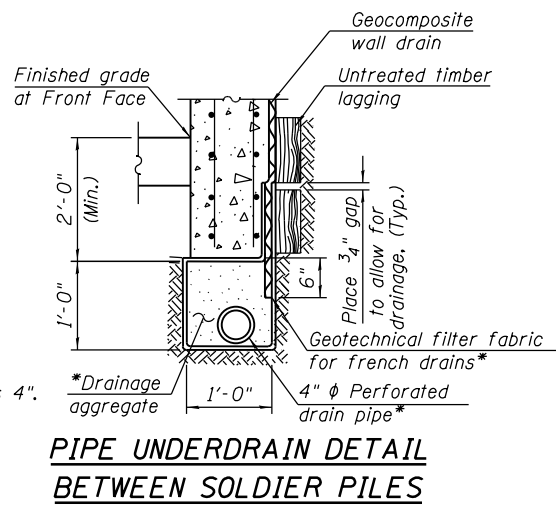
BARS p403(E), p404(E), p405(E) p406(E), p407(E) & p408(E)



BAR s401(E) BAR s402(E) BARS u401(E) & u402(E)



PIPE UNDERDRAIN DETAIL AT SOLDIER PILE



PIPE UNDERDRAIN DETAIL BETWEEN SOLDIER PILES



USER NAME = dunkerleyb	DESIGNED - DEV	REVISED
PLOT SCALE = N.T.S.	CHECKED - ATB	REVISED
PLOT DATE = 4/28/2014	DRAWN - BRD	REVISED
	CHECKED - EJO	REVISED

STATE OF ILLINOIS
DEPARTMENT OF TRANSPORTATION

DETAILS
STRUCTURE NO. 016-1723
SHEET NO. RW4-100F RW4-15 SHEETS

F.A.I. R.T.E.	SECTION	COUNTY	TOTAL SHEETS	SHEET NO.
90/94/290	2013-010R	COOK	747	564
CONTRACT NO.			60W28	
ILLINOIS FED. AID PROJECT -NUMBER-				

0161723-60W28-510-SuperStruct