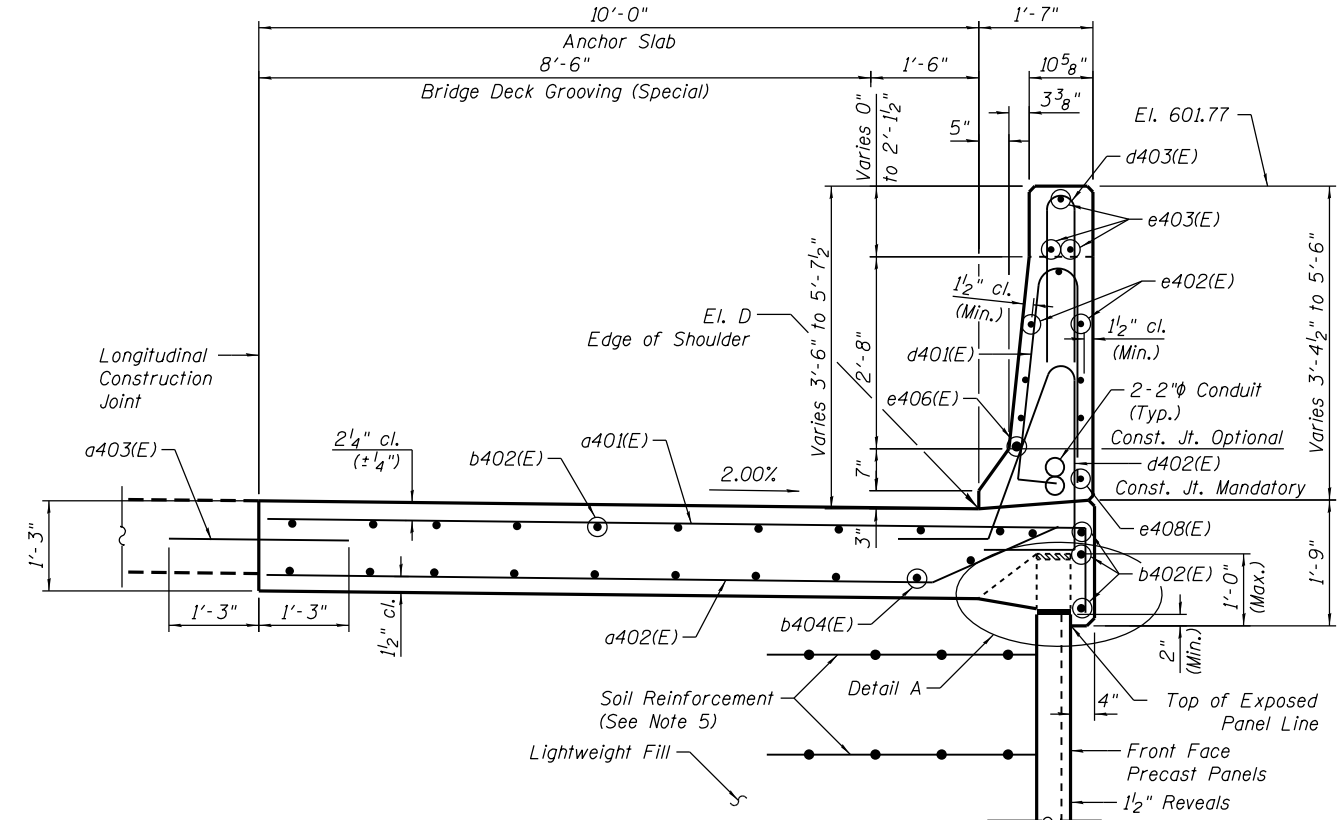
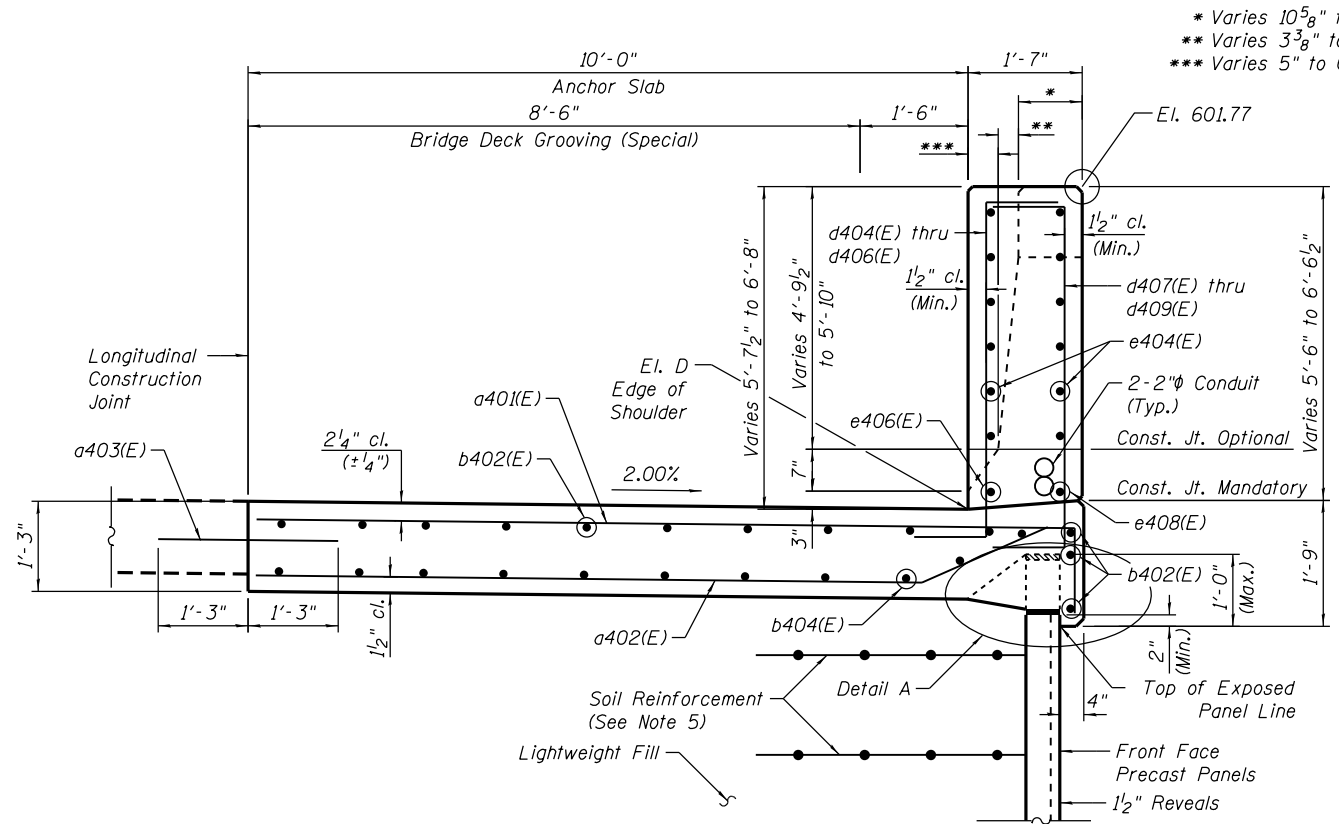


SECTION A-A
(Sta. 1838+23.17 to Sta. 1838+52.50)
(Facing West)

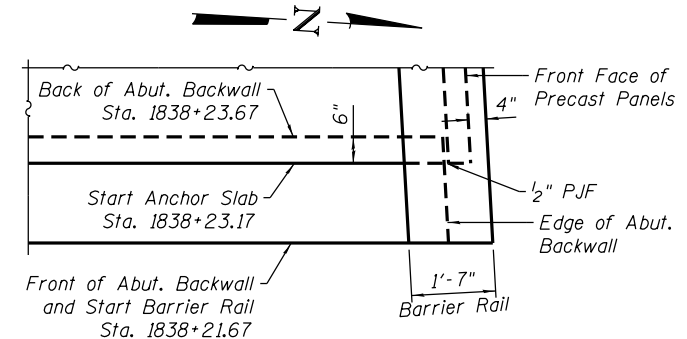


SECTION B-B
(Sta. 1838+52.50 to Sta. 1838+83.00)
(Facing West)

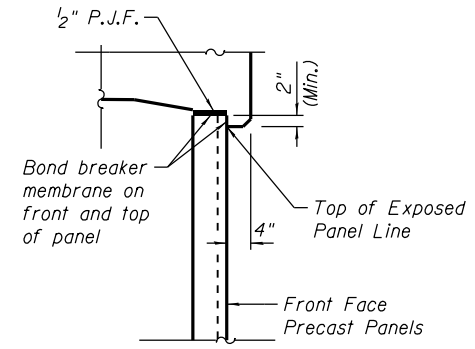


SECTION C-C
(Sta. 1838+83.00 to Sta. 1838+98.00)
(Facing West)

* Varies 10⁵/₈" to 1'-7"
** Varies 3³/₈" to 0"
*** Varies 5" to 0"



DETAIL B



DETAIL A

NOTES:

- Bend longitudinal rebar in field to fit barrier rail shape transition.
- Bridge Deck Grooving (Special) extends from start of Anchor Slab at Sta. 1838+23.17 to end of approach slab at Sta. 1838+53.17. For quantity of Bridge Deck Grooving (Special) on approach slab and South Anchor Slab, see structural plans for NW Flyover (SN 016-1705) and Retaining Wall 3 (SN 016-1722), respectively.
- Protective Coat is applied to top of Anchor Slab and inside vertical and top faces of Barrier Rail. Apply after Bridge Deck Grooving (Special) is complete.
- See RW4-11 for reveal layout.
- The M.S.E. wall supplier's internal stability design shall account for the anchorage slab's bearing pressure discharge of 1.0 ksf and horizontal sliding force of 0.83 kips/ft of wall.
- Anchor Slab ends at Sta. 1838+23.17 where it overlaps the abutment backwall by 6". Barrier Rail ends at Sta. 1838+21.67 at front of abutment backwall. See Detail B.

BILL OF MATERIAL

Item	Unit	Quantity
Protective Coat	Sq. Yd.	130
Concrete Superstructure	Cu. Yd.	55
Bridge Deck Grooving (Special)	Sq. Yd.	29



USER NAME = dunkerleyb	DESIGNED - DEV	REVISED
	CHECKED - ATB	REVISED
PLOT SCALE = N.T.S.	DRAWN - BRD	REVISED
PLOT DATE = 4/28/2014	CHECKED - EJO	REVISED

STATE OF ILLINOIS
DEPARTMENT OF TRANSPORTATION

BARRIER RAIL AND ANCHOR SLAB SECTIONS
STRUCTURE NO. 016-1723

F.A.I. R.E. 90/94/290	SECTION 2013-010R	COUNTY COOK	TOTAL SHEETS 747	SHEET NO. 560
CONTRACT NO. 60W28			ILLINOIS FED. AID PROJECT -NUMBER-	

SHEET NO. RW4-060F RW4-15 SHEETS

0161723-60W28-506-Parapet