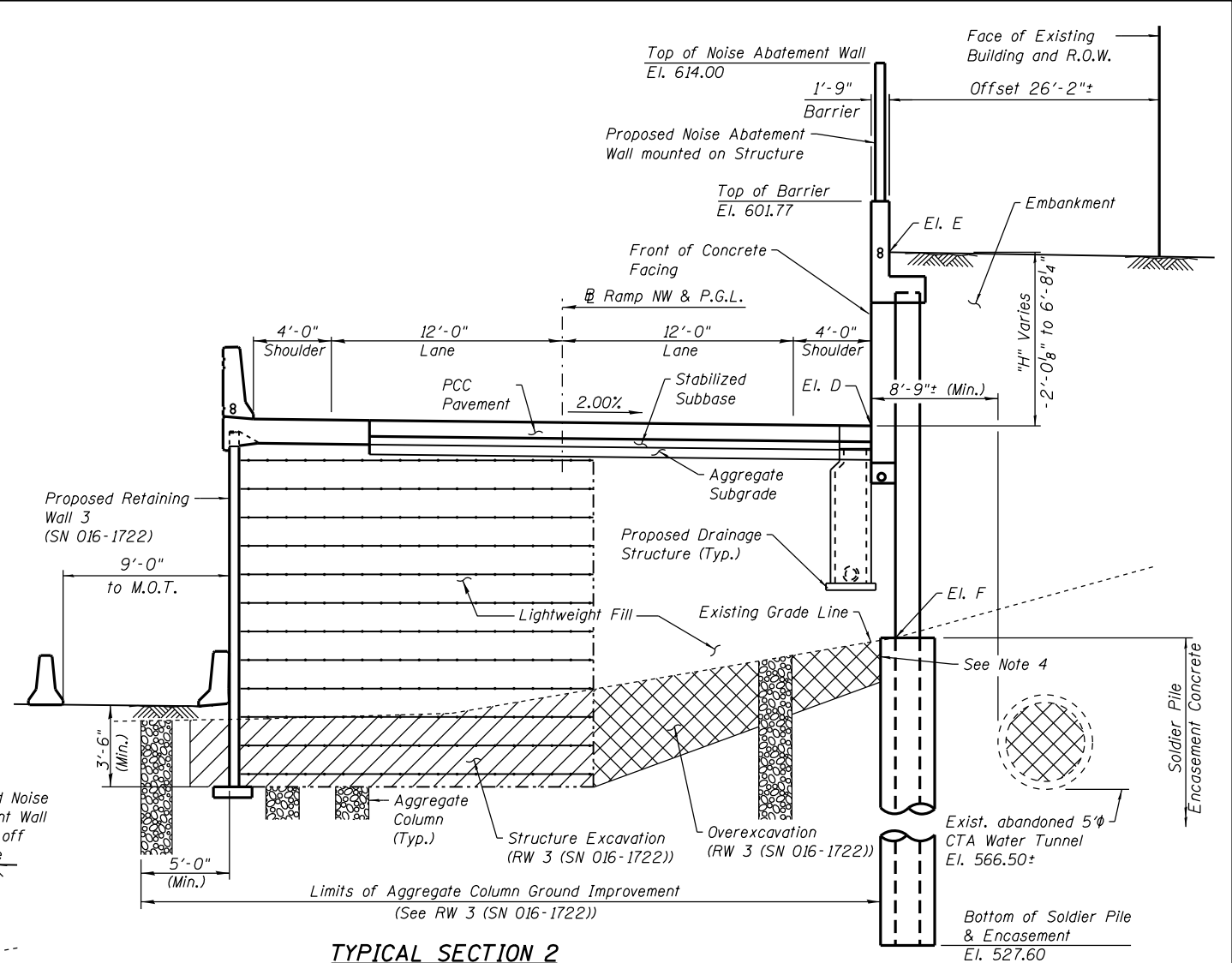


**TYPICAL SECTION 1**  
(Sta. 1838+23.17 to Sta. 1838+98.00)  
(Facing West)

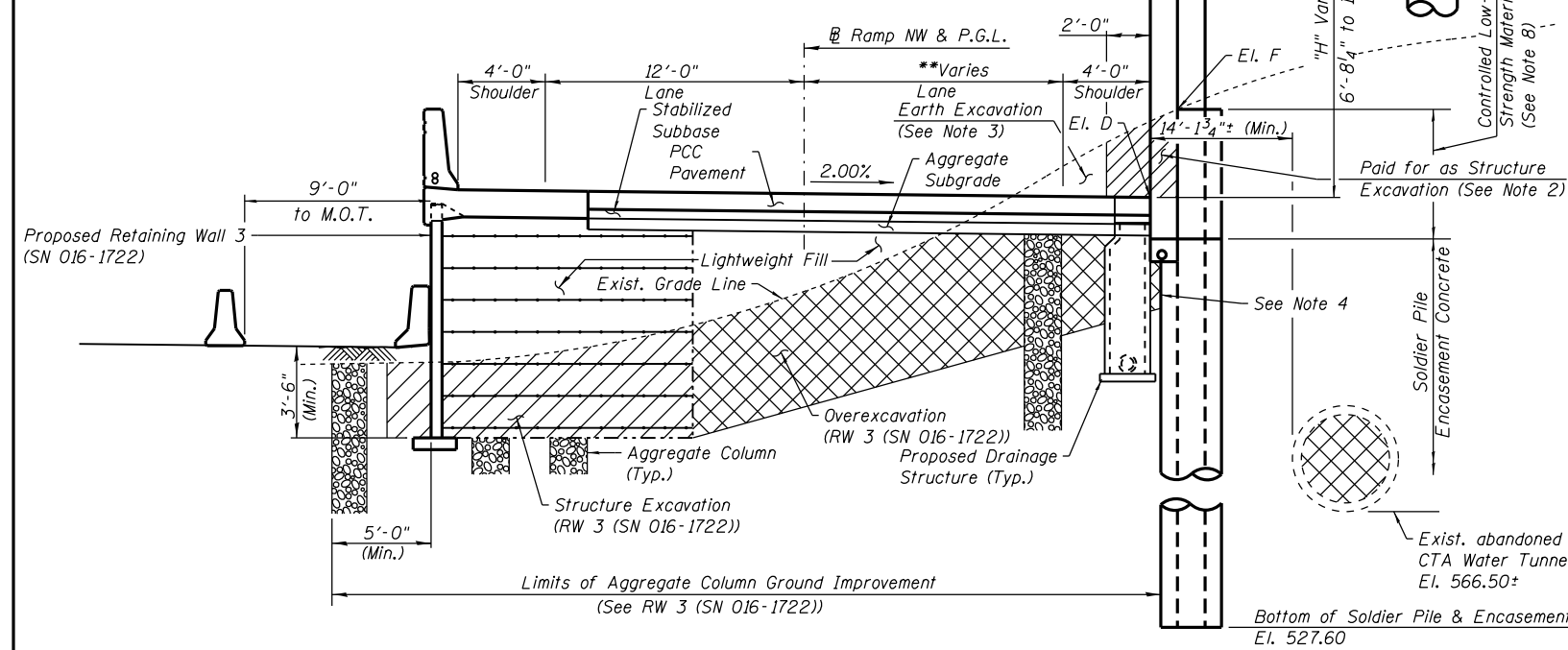
\* Shoulder widths vary from 5'-2 1/8" at Sta. 1838+23.17 to 4'-0" at Sta. 1838+44.32

**BILL OF MATERIAL**

Item	Unit	Quantity
Structure Excavation	Cu. Yd.	101
Lightweight Cellular Concrete Fill (Class II)	Cu. Yd.	136
Mechanically Stabilized Earth Retaining Wall, Special	Sq. Ft.	430

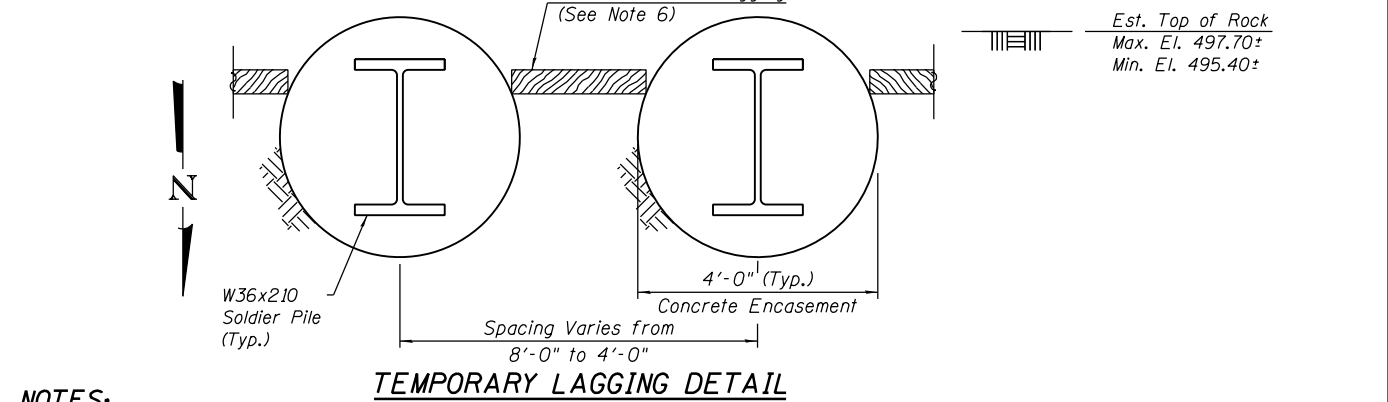


**TYPICAL SECTION 2**  
(Sta. 1838+98.00 to Sta. 1840+17.00)  
(Facing West)



**TYPICAL SECTION 3**  
(Sta. 1840+17.00 to Sta. 1841+26.23)  
(Facing West)

\*\* Lane width is 12'-0" from Sta. 1840+17.00 to Sta. 1840+50.19. Width varies 12'-0" to 17'-3 3/4" from Sta. 1840+50.19 to Sta. 1841+26.23.



**TEMPORARY LAGGING DETAIL**

- NOTES:**
- For Embankment quantity and pay item, see Civil plans.
  - Structure Excavation is measured 2'-0" from Front Face of wall to back of soldier pile timber lagging.
  - For additional Earth Excavation quantity and pay item, see Civil plans.
  - Contractor shall not excavate north of soldier piles. If overexcavation for Retaining Wall 3 projects north of soldier piles, Contractor may install temporary lagging between soldier piles to retain existing soil until fill is placed. Temporary lagging for overexcavation is not measured for payment.
  - For Elevations D, E, and F see Table 1 on sheet RW4-02.
  - The Contractor is responsible for the design and performance of the lagging system, using no less than a 3 in. nominal rough-sawn thickness and timber with a minimum allowable bending stress of 1000 psi. The Contractor shall submit design calculations and details prepared by an Illinois Licensed Structural Engineer for the attachment of the lagging to the concrete encasement for approval by the Engineer. Alternative equivalent systems may be submitted for approval by the Engineer.
  - Approach Slab for NW Flyover (SN 016-1705) is between Anchor Slabs from Sta. 1838+23.17 to Sta. 1838+53.17. See bridge plans.
  - Cost of controlled low-strength material is included in cost of Drilling and Setting Soldier Piles (in Soil) pay item.

0161723-60W28-503-GenNote



USER NAME = dunkerleyb	DESIGNED - DEV	REVISED
PLOT SCALE = N.T.S.	CHECKED - ATB	REVISED
PLOT DATE = 4/28/2014	DRAWN - BRD	REVISED
	CHECKED - EJO	REVISED

**STATE OF ILLINOIS  
DEPARTMENT OF TRANSPORTATION**

**TYPICAL SECTIONS  
STRUCTURE NO. 016-1723**

SHEET NO. RW4-030F RW4-15 SHEETS

F.A.I. R.T.E.	SECTION	COUNTY	TOTAL SHEETS	SHEET NO.
90/94/290	2013-010R	COOK	747	557
CONTRACT NO. 60W28			ILLINOIS FED. AID PROJECT -NUMBER-	