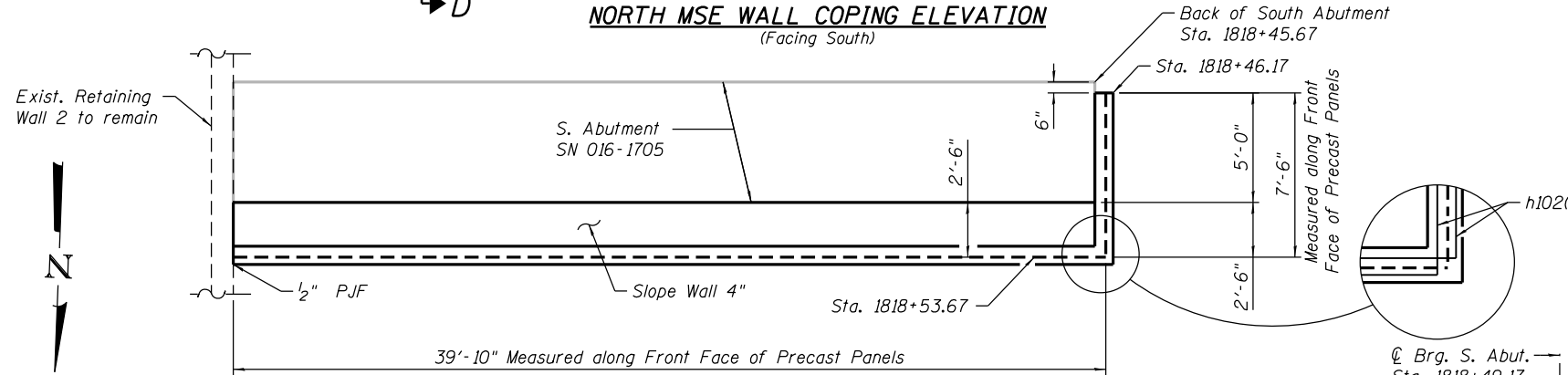
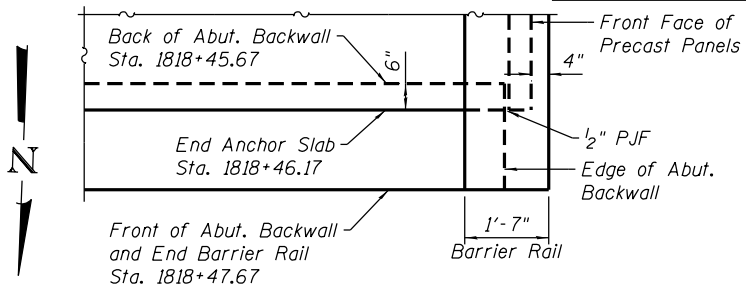


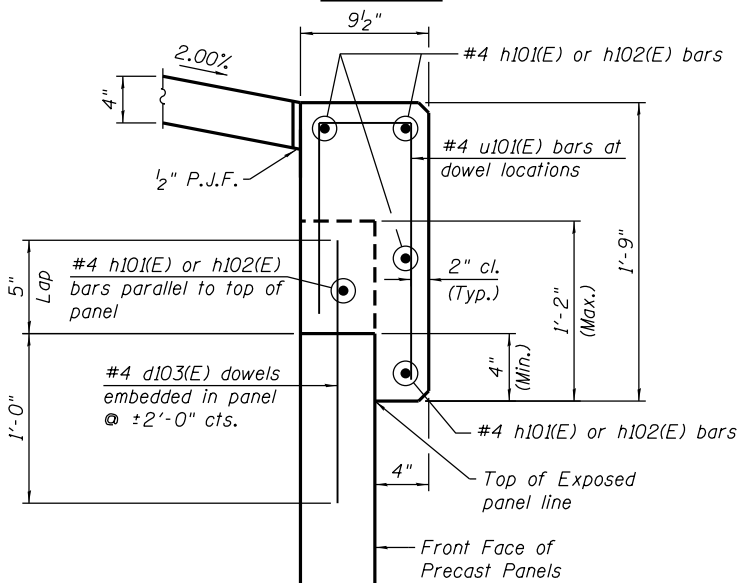
NORTH MSE WALL COPING ELEVATION
(Facing South)



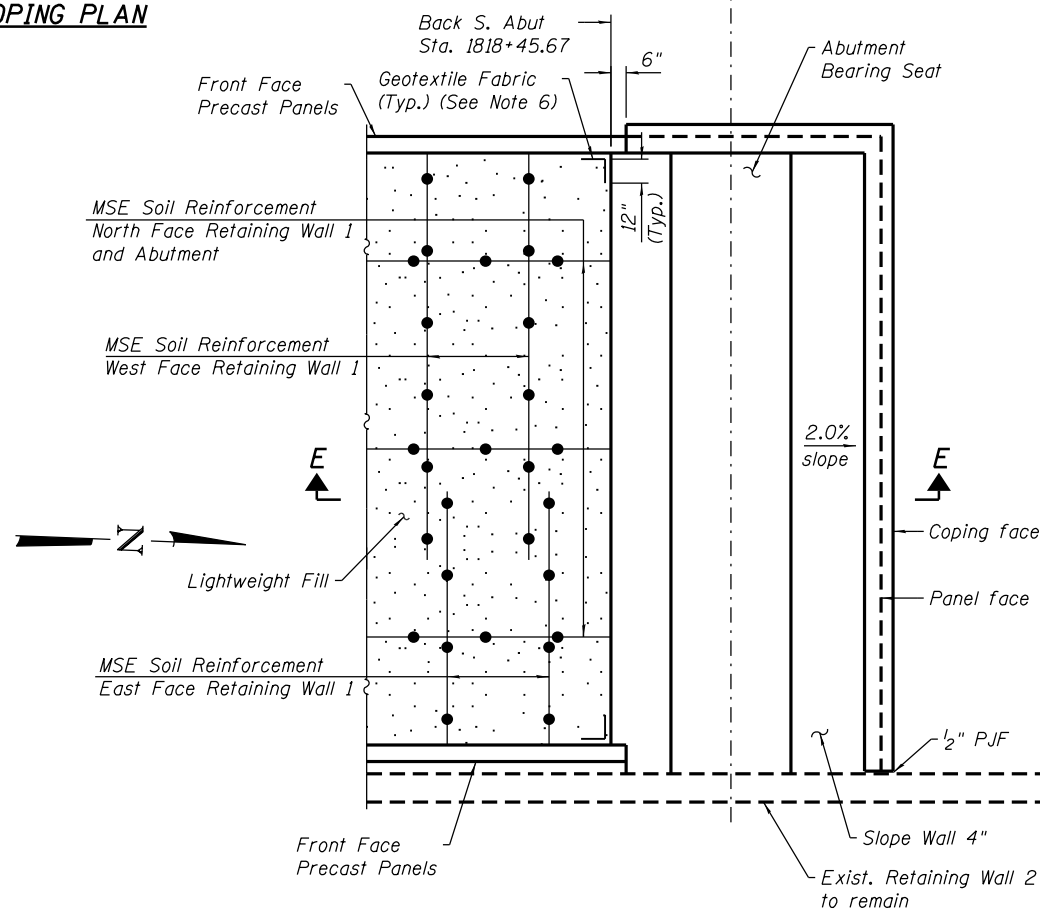
NORTH MSE WALL COPING PLAN



DETAIL 1



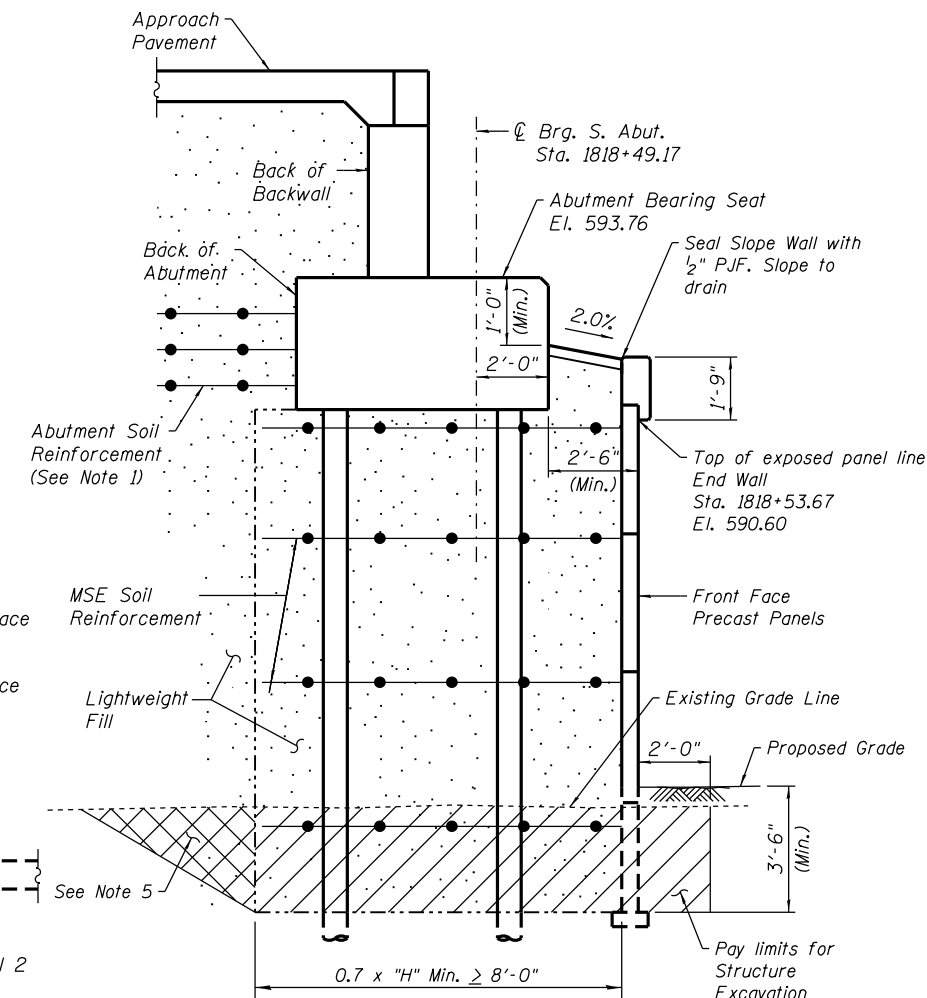
MSE COPING SECTION D-D



PLAN DETAIL: MSE WRAP AROUND ABUTMENT

NOTES:

1. The MSE wall supplier shall design the abutment soil reinforcement to resist a horizontal force of 4.6 k/ft of abutment. Cost included in cost of Mechanically Stabilized Earth Retaining Wall, Special.
2. Anchor Slabs end at Sta. 1818+46.17 where they overlap the abutment backwall by 6". Barrier Rails end at Sta. 1818+47.67 at front of abutment backwall. See Detail 1.
3. Bars noted thus, 7x3-#4 indicates 7 lines of #4 bars with 3 lengths per line.
4. See South Abutment sheets for abutment details.
5. Overexcavation beyond limits of Structure Excavation not measured for payment. Additional Lightweight Fill or Aggregate Column Ground Improvement in overexcavation area also not measured for payment.
6. Cost of Geotextile Fabric is included in cost of Mechanically Stabilized Earth Retaining Wall, Special.
7. 1/2" P.J.F. is installed by Standard 1051.09. Cost is included in Slope Wall 4".



SECTION E-E
(Facing West)

0161720-60W28-508-Parapet



USER NAME = dunkerleyb	DESIGNED - DEV	REVISED
PLOT SCALE = N.T.S.	CHECKED - ATB	REVISED
PLOT DATE = 4/28/2014	DRAWN - BRD	REVISED
	CHECKED - EJO	REVISED

STATE OF ILLINOIS
DEPARTMENT OF TRANSPORTATION

MSE WRAP AROUND DETAILS
STRUCTURE NO. 016-1720

SHEET NO. RW1-08 OF RW1-17 SHEETS

F.A.I. R.E. 90/94/290	SECTION 2013-010R	COUNTY COOK	TOTAL SHEETS 747	SHEET NO. 526
CONTRACT NO. 60W28			ILLINOIS FED. AID PROJECT -NUMBER-	