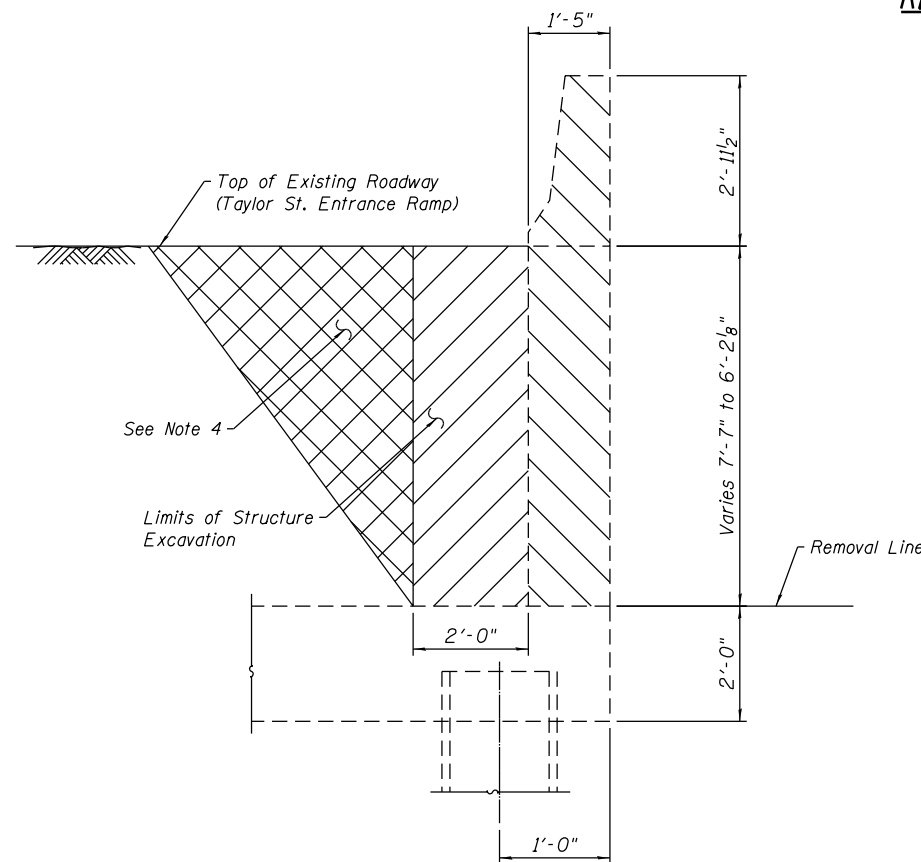
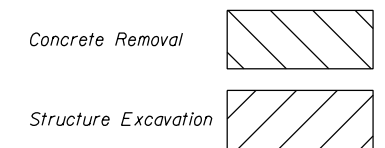
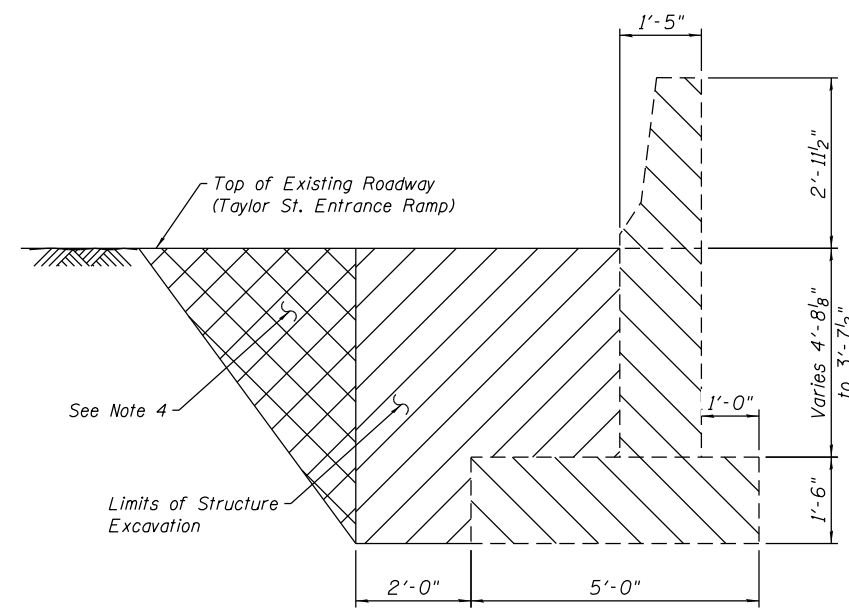


REMOVAL PLAN

LEGEND:



SECTION A-A
Sta. 1813+60.00 to Sta. 1814+10.00
(Facing North)



SECTION B-B
Sta. 1814+10.00 to Sta. 1814+59.63
(Facing North)

NOTES:

- Excavation area shall be backfilled to pre-excavation elevation upon installation of west face of proposed wall. Cost of backfill is included in cost of Structure Excavation.
- See civil plans for replacement of Taylor St. entrance ramp pavement.
- Stations and offsets are given with respect to baseline of Ramp NW.
- Overexcavation beyond limits of Structure Excavation not measured for payment.
- V.I.F. = "Verify in Field"

BILL OF MATERIAL

Item	Unit	Quantity
Concrete Removal	Cu. Yd.	53
Structure Excavation	Cu. Yd.	66

0161720-60W28-504-CenNote



USER NAME = dunkerleyb	DESIGNED - DEV	REVISED
	CHECKED - ATB	REVISED
PLOT SCALE = N.T.S.	DRAWN - BRD	REVISED
PLOT DATE = 4/28/2014	CHECKED - EJO	REVISED

STATE OF ILLINOIS
DEPARTMENT OF TRANSPORTATION

EXISTING STRUCTURAL REMOVAL
STRUCTURE NO. 016-1720

SHEET NO. RW1-04 OF RW1-17 SHEETS

F.A.I. RTE. 90/94/290	SECTION 2013-010R	COUNTY COOK	TOTAL SHEETS 747	SHEET NO. 522
CONTRACT NO. 60W28			ILLINOIS FED. AID PROJECT -NUMBER-	