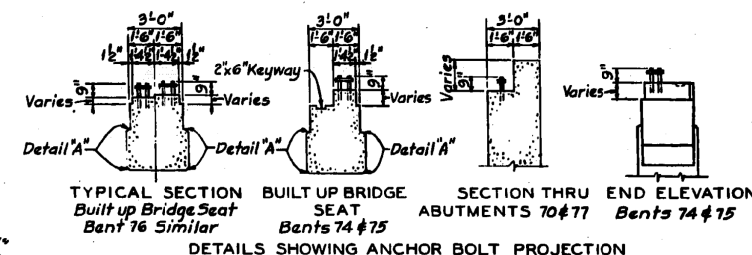
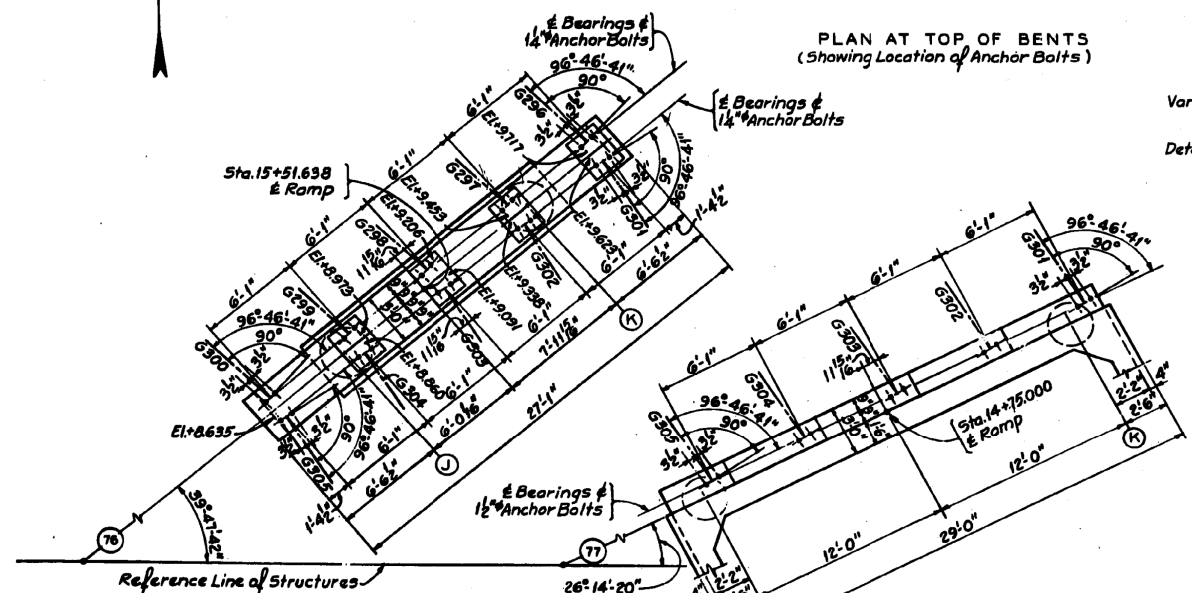
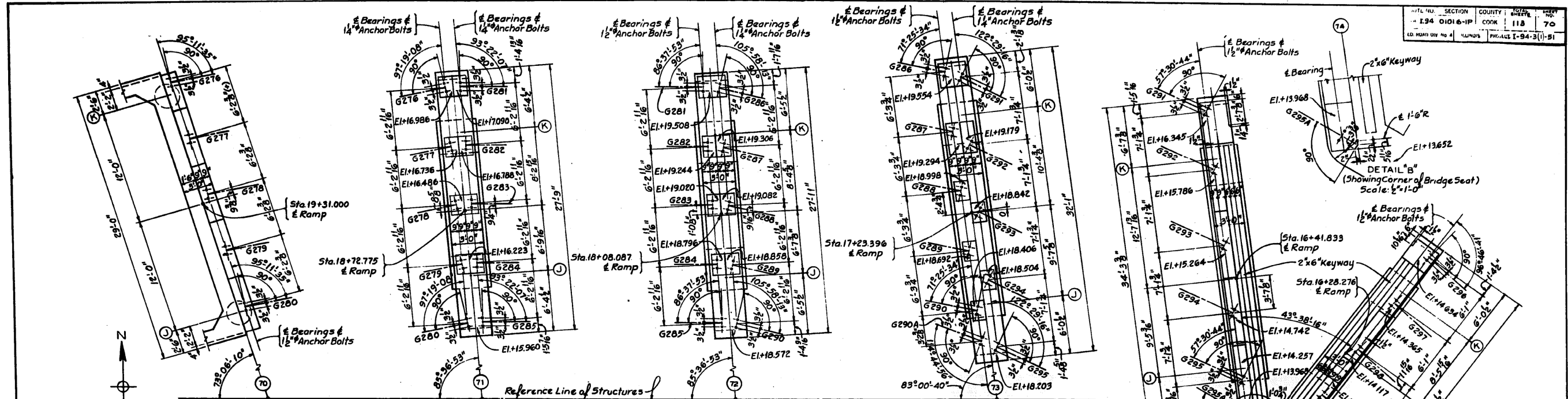


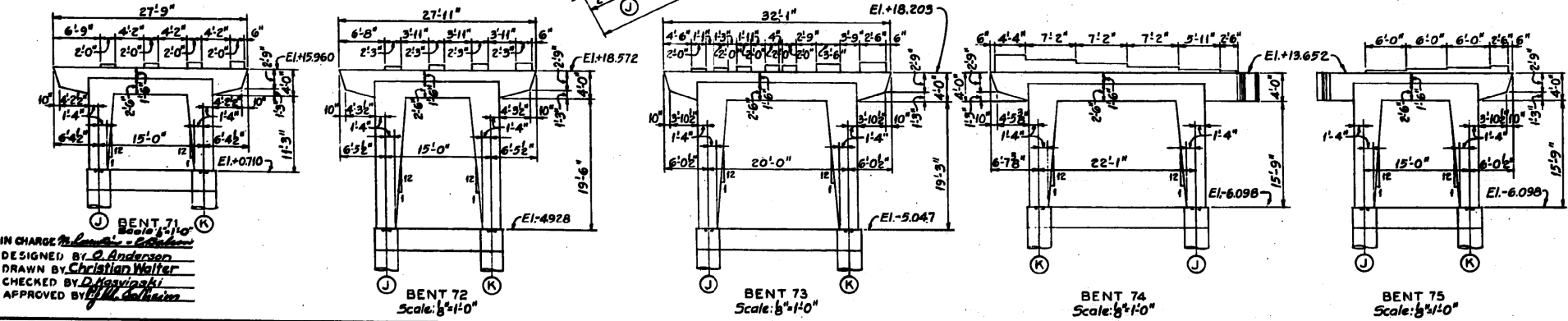
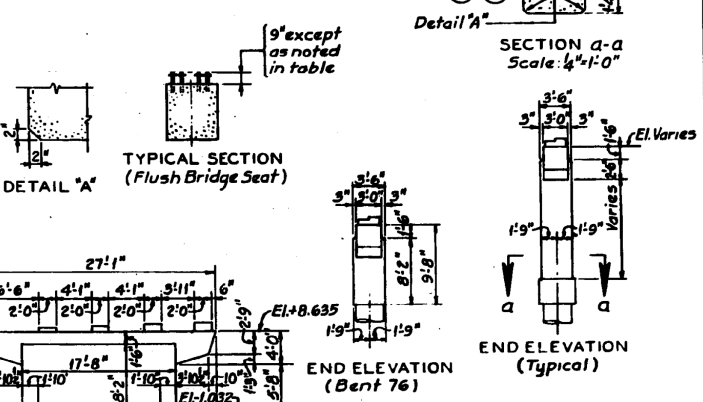
FOR INFORMATION ONLY



Notes:
All Bridge Seats must be poured monolithic with piers and abutments and shall be finished smooth, level and to exact elevations given. No grout shall be placed under base plates.

- References:
- General Notes
 - Reinforcement in Bents
 - Details of Abutment 70
 - Details of Abutment 77
 - Sub-Pier Schedule and Foundation Girders
 - Detail of Anchor Bolts

GIRDER MARK AND BENT NO.	PROJECTION
G 290A @ Bent 73	9 1/2"
G 290 @ Bent 72	9 1/2"
G 300 @ Bent 76	10"



IN CHARGE: *[Signature]*
DESIGNED BY: O. Anderson
DRAWN BY: Christian Walter
CHECKED BY: D. Karpinski
APPROVED BY: *[Signature]*

CITY OF CHICAGO
DEPARTMENT OF PUBLIC WORKS
BUREAU OF ENGINEERING
NORTHWEST ROUTE SUPERHIGHWAY
HALSTED STREET INTERCHANGE
SECTION 0101.6-1P
CONCRETE BENTS N.W. RAMP
DIMENSIONS AND ELEVATIONS
SCALE: 1/4"=1'-0" EXCEPT AS NOTED
SHEET NO. 5-13 OF 113 SHEETS

FILE PATH = C:\Projects\14-0425 - 60W28 Structure\14-0425-AS-BUILT-18.dgn



D16W28-sht-AS-BUILT-18.dgn
USER NAME = auyeuqh
PLOT SCALE = 1:8000 / 1"
PLOT DATE = 4/25/2014

DESIGNED -	REVISED -
DRAWN -	REVISED -
CHECKED -	REVISED -
DATE - 04/28/14	REVISED -

STATE OF ILLINOIS
DEPARTMENT OF TRANSPORTATION

EXISTING AS-BUILTS
SN 016-2449 & SN 016-2451
SCALE: NTS SHEET 18 OF 48 SHEETS STA. TO STA.

F.A.I. RTE.	SECTION	COUNTY	TOTAL SHEETS	SHEET NO.
90/94/290	2013-010R	COOK	747	488
CONTRACT NO. 60W28				ILLINOIS FED. AID PROJECT