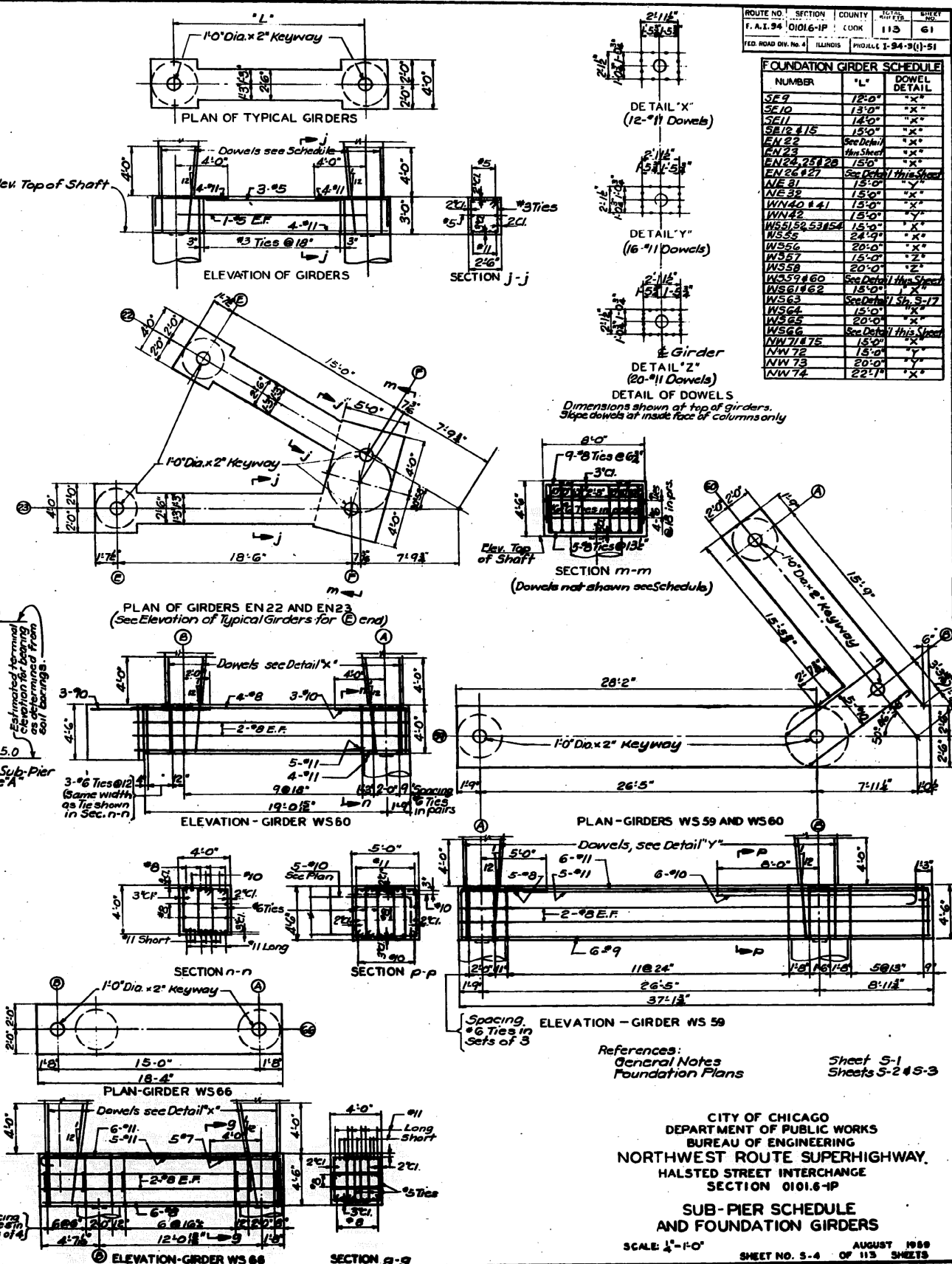
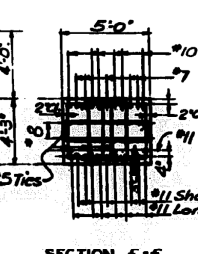
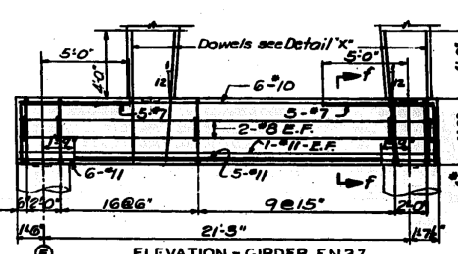
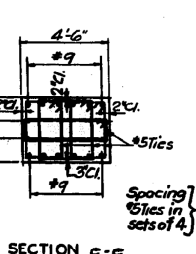
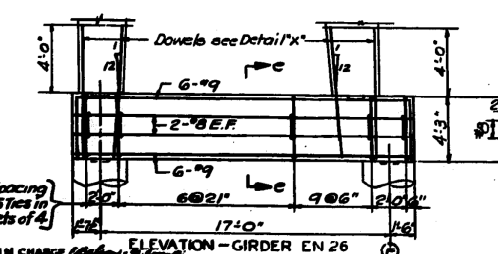
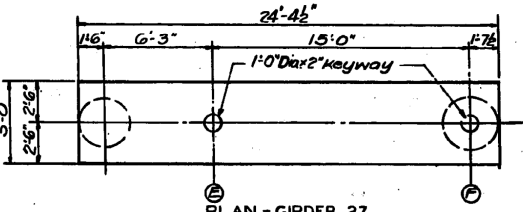
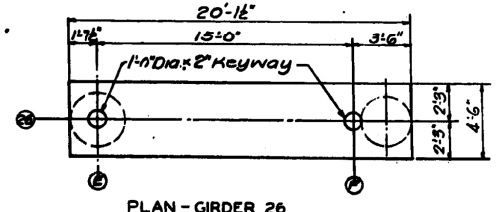


FOR INFORMATION ONLY

SUB-PIER SCHEDULE table with columns for NUMBER, SHAFT DIA., ELEVATION, BELL DIA., # REINFORCEMENT, and # REINFORCEMENT. Lists various sub-pier items like 9C9D, 10C10D, etc.

Note: All Type 'A' Sub-Piers shall rest on soil capable of supporting 12,000'/ft. All Type 'B' Sub-Piers shall rest on soil capable of supporting 6,000'/ft. \*Reinforcement is for one (1) Sub-Pier



FOUNDATION GIRDER SCHEDULE table with columns for NUMBER, 'L', and DOWEL DETAIL. Lists items like SE9, SE10, etc.

References: General Notes, Foundation Plans. Sheet S-1, Sheets S-2 & S-3. CITY OF CHICAGO DEPARTMENT OF PUBLIC WORKS BUREAU OF ENGINEERING NORTHWEST ROUTE SUPERHIGHWAY HALSTED STREET INTERCHANGE SECTION 0101.6-IP SUB-PIER SCHEDULE AND FOUNDATION GIRDERS SCALE 1/4"=1'-0" AUGUST 1989 SHEET NO. S-4 OF 115 SHEETS