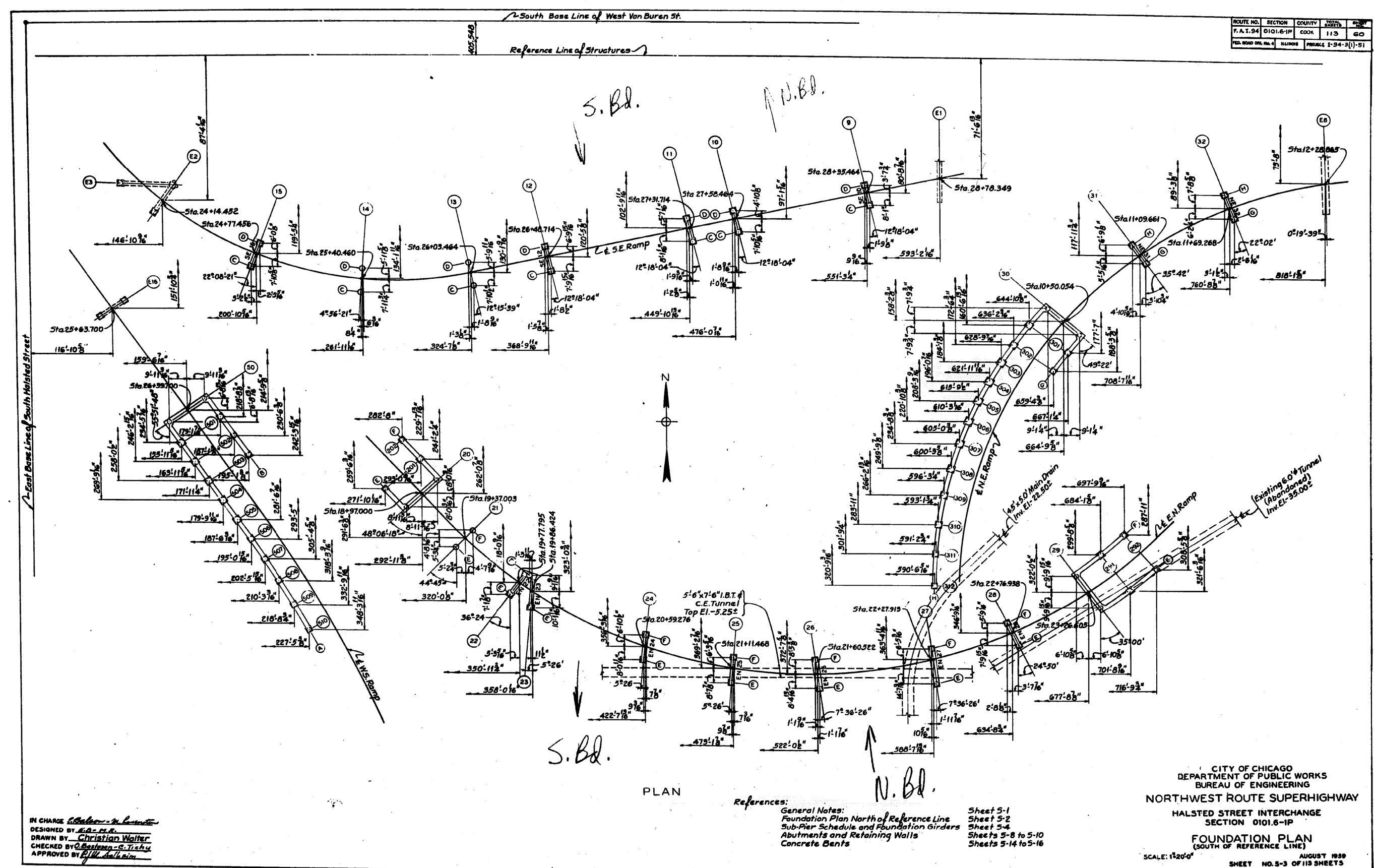


FOR INFORMATION ONLY

ROUTE NO.	SECTION	COUNTY	SHEET NO.	TOTAL SHEETS
F.A.I. 94	0101.6-1P	COOK	113	60
PROJ. ROAD DIST. NO.	ILLINOIS	PROJECT	I-94-3(1)-51	



IN CHARGE *C. Balcer - N. Bennett*
 DESIGNED BY *E.A. P.K.*
 DRAWN BY *Christian Walter*
 CHECKED BY *C. Eastman - G. Tichy*
 APPROVED BY *R.W. Sullivan*

References:
 General Notes:
 Foundation Plan North of Reference Line
 Sub-Pier Schedule and Foundation Girders
 Abutments and Retaining Walls
 Concrete Bents

Sheet 5-1
 Sheet 5-2
 Sheet 5-4
 Sheets 5-8 to 5-10
 Sheets 5-14 to 5-16

CITY OF CHICAGO
 DEPARTMENT OF PUBLIC WORKS
 BUREAU OF ENGINEERING
 NORTHWEST ROUTE SUPERHIGHWAY
 HALSTED STREET INTERCHANGE
 SECTION 0101.6-1P
 FOUNDATION PLAN
 (SOUTH OF REFERENCE LINE)
 SCALE: 1"=20'-0"
 AUGUST 1999
 SHEET NO. 5-3 OF 113 SHEETS

FILE PATH = C:\Projects\14-0425 - 60W28 - Structure\14-0425 - 60W28 - sht-AS-BUILT-08.dgn



D160W28-sht-AS-BUILT-08.dgn
 USER NAME = ayeunggh
 PLOT SCALE = 1:8000 / 1"=80'
 PLOT DATE = 4/25/2014

DESIGNED -	REVISED -
DRAWN -	REVISED -
CHECKED -	REVISED -
DATE - 04/28/14	REVISED -

STATE OF ILLINOIS
 DEPARTMENT OF TRANSPORTATION

EXISTING AS-BUILTS
 SN 016-2449 & SN 016-2451

SCALE: NTS SHEET 8 OF 48 SHEETS STA. TO STA.

F.A.I. RTE.	SECTION	COUNTY	TOTAL SHEETS	SHEET NO.
90/94/290	2013-010R	COOK	747	478
CONTRACT NO. 60W28				
ILLINOIS FED. AID PROJECT				