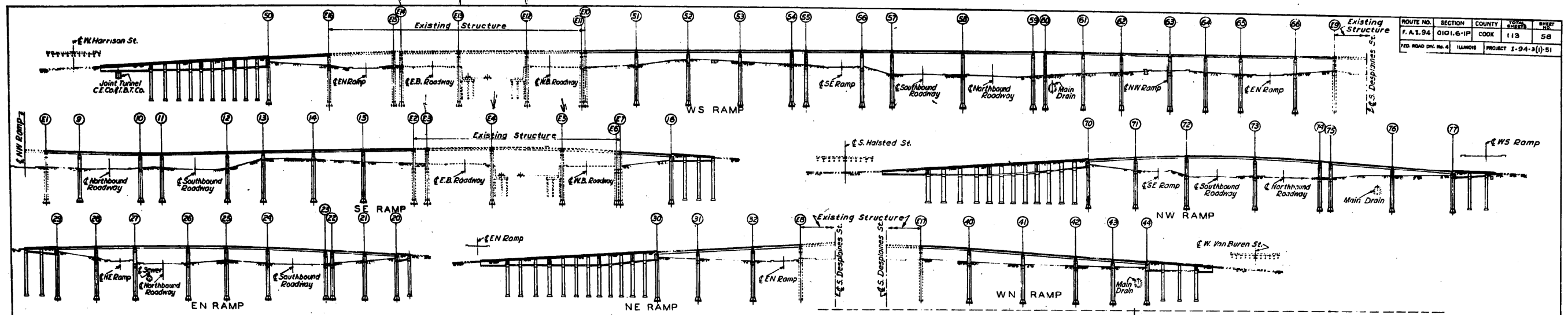
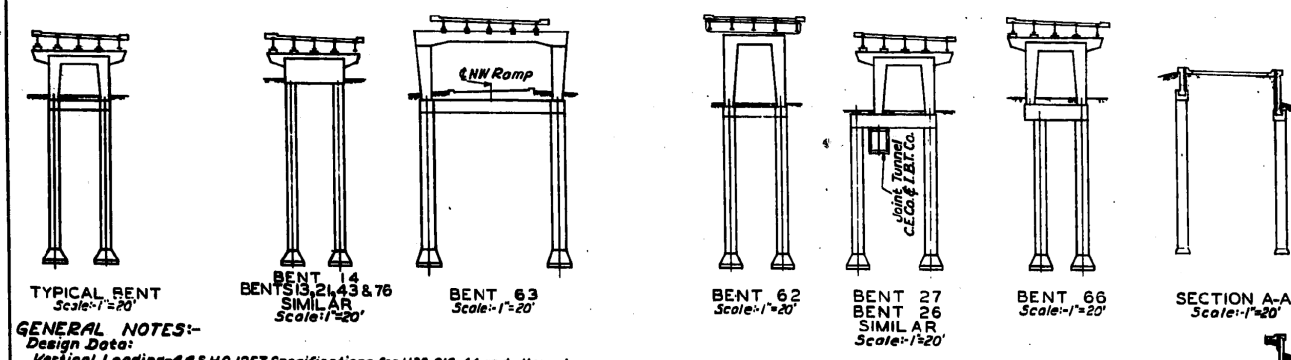


FOR INFORMATION ONLY



ROUTE NO.	SECTION	COUNTY	TOTAL SHEETS	SHEET NO.
F.A.I. 94	0101.6-1P	COOK	113	58
FED. ROAD DIV. NO. 4	ILLINOIS	PROJECT	I-94-3(1)-51	

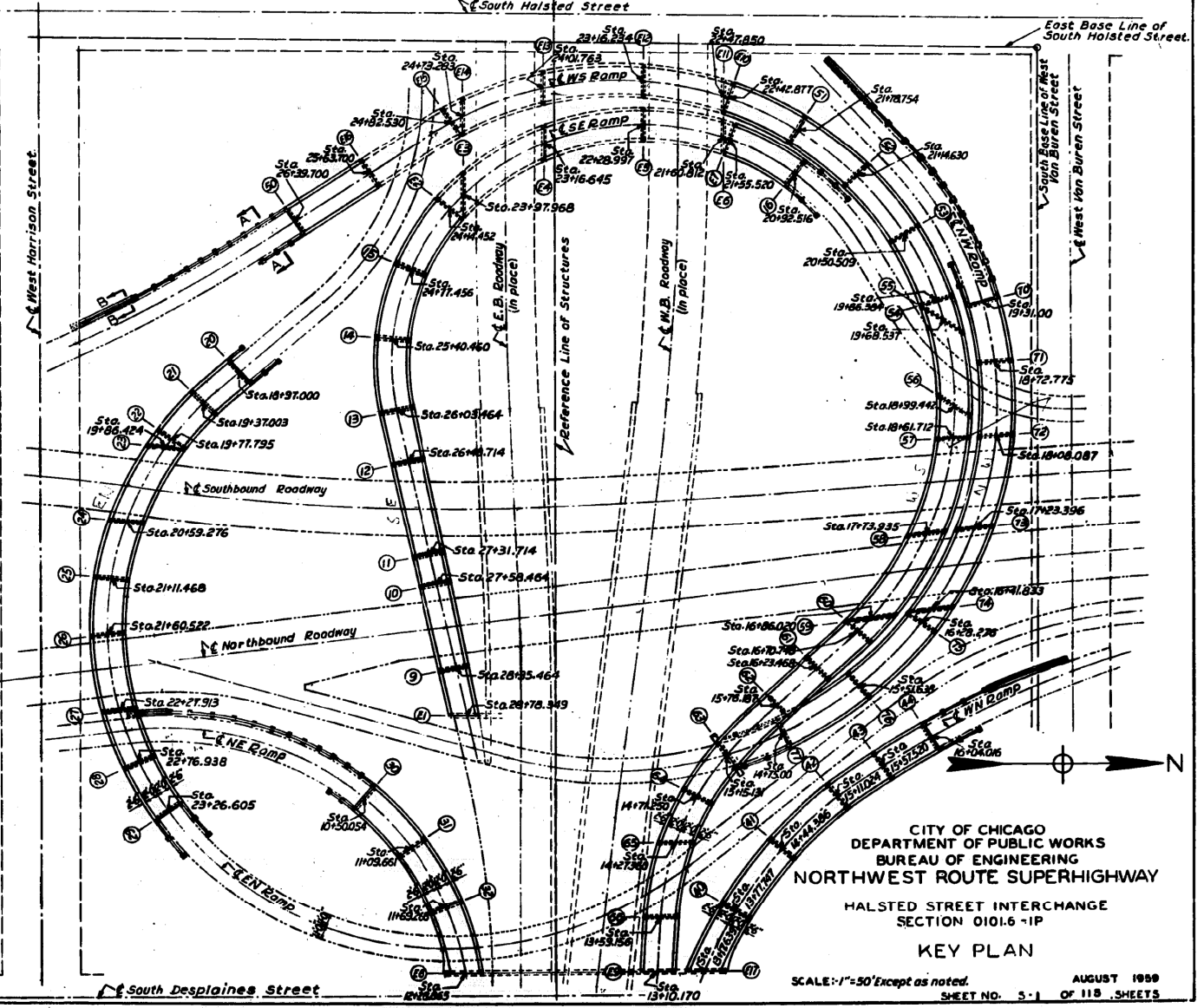


GENERAL NOTES:-
 Design Data:
 Vertical Loading - A.A.S.H.O. 1957 Specifications for H20-S16-44 and alternate live load as defined in Section 404 of the Bureau of Public Roads Policy and Procedure Memorandum 20-4, dated Aug. 6, 1954.
 Lateral Loading - Soil pressure of 40 lbs. per cu. ft. equivalent fluid pressure.
 Working Stresses - Structural Steel $f_s = 18,000$ p.s.i.
 Reinforcing Steel $f_s = 20,000$ p.s.i.
 Reinforced Concrete without earth pressure $f_c = 1400$ p.s.i.
 Reinforced Concrete with earth pressure $f_c = 800$ p.s.i.
 Bearing on Soil - Sub-piers under Bents = 12,000 p.s.f.
 Bearing on Soil - Sub-piers under Retaining Walls = 6,000 p.s.f.

STRUCTURAL ITEMS:-
 Item 5 Class X Concrete
 Item 6 Reinforcement Bars
 Item 8 Structural Steel
 Item 9 Sub-pier Shoes
 Item 10 Sub-pier Bells

The following notes apply to sheets S-1 to S-31 inclusive. These notes will be supplemented by additional notes as the individual sheets may require.
 No construction joints except those shown on the plans will be allowed unless otherwise ordered by the Engineer.
 All exposed edges of concrete shall be chamfered $\frac{3}{8}$ inch unless otherwise shown on plans.
 Concrete surfaces shall be finished in accordance with specifications. Unless otherwise shown on plans or ordered in writing by the Engineer, spliced bars in the bottom of slabs, beams and girders and in walls, columns and haunches shall be lapped 24 diameters; bars near the top of slabs, beams and girders having more than 16 inches of concrete under the bars shall be lapped 35 diameters where applied.
 All other reinforcing bar details shall be in accordance with the "Manual of Standard Practice for Detailing Reinforced Concrete Structures", issued by the American Concrete Institute.
 For material and designation of Reinforcing Steel, see Specifications.
 For material and designation of Structural Steel, see Specifications.
 Rivets "R" - Holes "H" unless otherwise shown.
 High Tension Bolts may be used in lieu of Rivets for all field connections.
 For welding see specifications. All welds shall be "continuous fillet unless otherwise noted."
 All dimensions and elevations given to existing structures shall be verified by the Contractor in the field.

IN CHARGE *[Signature]*
 DESIGNED BY *[Signature]*
 DRAWN BY *[Signature]*
 CHECKED BY *[Signature]*
 APPROVED BY *[Signature]*



CITY OF CHICAGO
 DEPARTMENT OF PUBLIC WORKS
 BUREAU OF ENGINEERING
 NORTHWEST ROUTE SUPERHIGHWAY
 HALSTED STREET INTERCHANGE
 SECTION 0101.6-1P
 KEY PLAN
 SCALE: 1"=50' Except as noted.
 AUGUST 1959
 SHEET NO. 5-1 OF 113 SHEETS

FILE PATH = C:\Projects\11-0425 - 60W28-Struct\Bul115\DI60W28-sht-AS-BUILT-06.dgn



DI60W28-sht-AS-BUILT-06.dgn
 USER NAME = auyeuungh
 PLOT SCALE = 1.0000 / in.
 PLOT DATE = 4/25/2014

DESIGNED -	REVISED -
DRAWN -	REVISED -
CHECKED -	REVISED -
DATE - 04/28/14	REVISED -

STATE OF ILLINOIS
 DEPARTMENT OF TRANSPORTATION

EXISTING AS-BUILTS
 SN 016-2449 & SN 016-2451
 SCALE: NTS SHEET 6 OF 48 SHEETS STA. TO STA.

F.A.I. RTE.	SECTION	COUNTY	TOTAL SHEETS	SHEET NO.
90/94/290	2013-010R	COOK	747	476
CONTRACT NO. 60W28				ILLINOIS FED. AID PROJECT