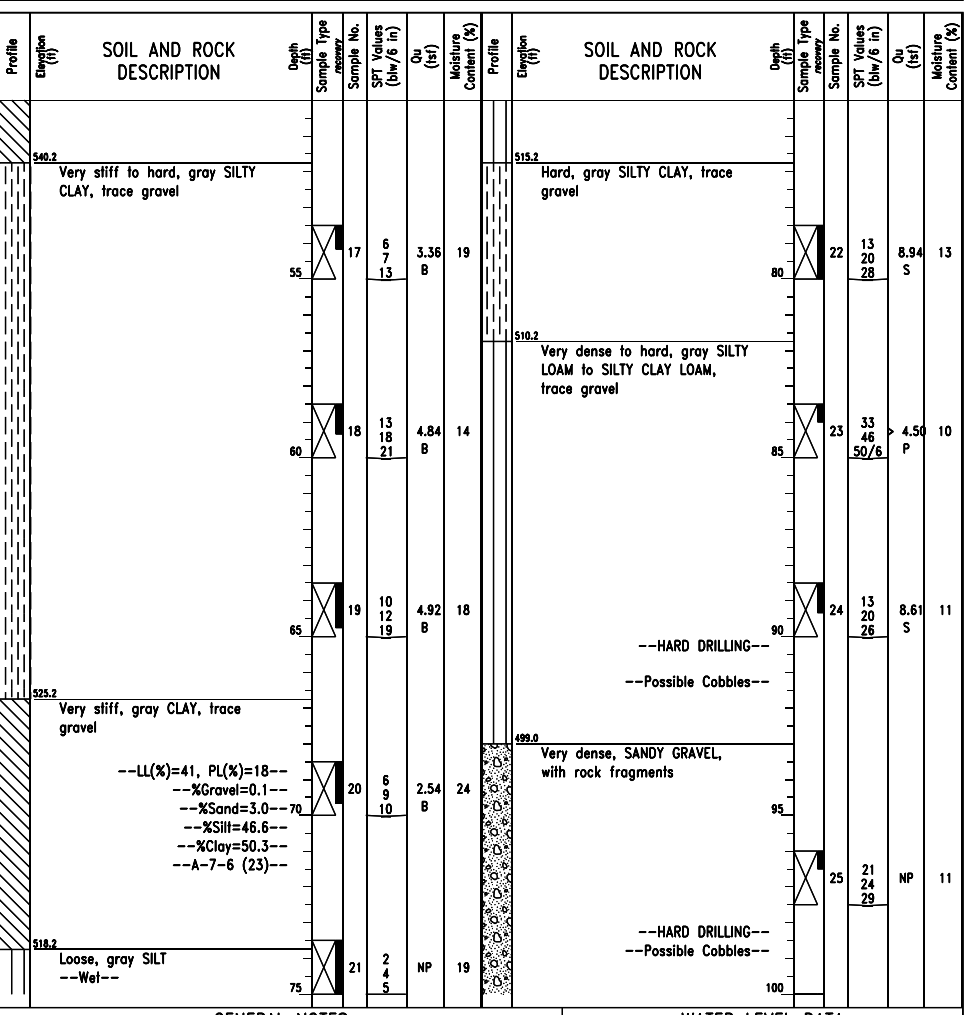
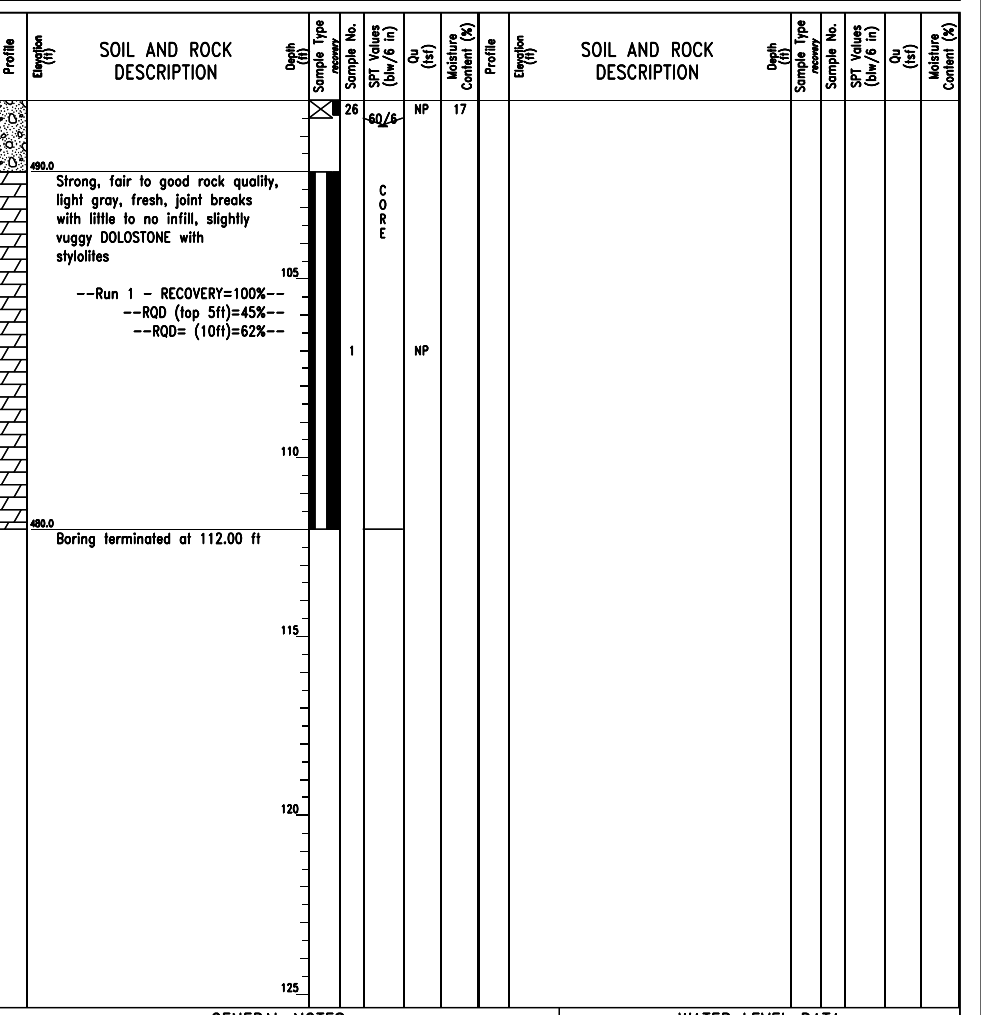


GENERAL NOTES		WATER LEVEL DATA	
Begin Drilling	07-25-2013	Complete Drilling	07-26-2013
Drilling Contractor	Wang Testing Services	Drill Rig	CME-55 TMR
Driller	R&J	Logger	A. Tomaras
Checked by	C. Marin	Drilling Method	2.25" SSA to 10', mud rotary thereafter, boring backfilled upon completion
While Drilling	NA	At Completion of Drilling	NA
Time After Drilling	NA	Depth to Water	NA



GENERAL NOTES		WATER LEVEL DATA	
Begin Drilling	07-25-2013	Complete Drilling	07-26-2013
Drilling Contractor	Wang Testing Services	Drill Rig	CME-55 TMR
Driller	R&J	Logger	A. Tomaras
Checked by	C. Marin	Drilling Method	2.25" SSA to 10', mud rotary thereafter, boring backfilled upon completion
While Drilling	NA	At Completion of Drilling	NA
Time After Drilling	NA	Depth to Water	NA



GENERAL NOTES		WATER LEVEL DATA	
Begin Drilling	07-25-2013	Complete Drilling	07-26-2013
Drilling Contractor	Wang Testing Services	Drill Rig	CME-55 TMR
Driller	R&J	Logger	A. Tomaras
Checked by	C. Marin	Drilling Method	2.25" SSA to 10', mud rotary thereafter, boring backfilled upon completion
While Drilling	NA	At Completion of Drilling	NA
Time After Drilling	NA	Depth to Water	NA

0161705-60W28-5157-Boring.dgn



USER NAME = floresg	DESIGNED - ABT	REVISED
PLOT SCALE = N.T.S.	CHECKED - EJO	REVISED
PLOT DATE = 5/7/2014	DRAWN - MRK	REVISED
	CHECKED - ABT	REVISED

STATE OF ILLINOIS
 DEPARTMENT OF TRANSPORTATION

BORING LOGS - IX
 STRUCTURE NO. 016-1705

SHEET NO. S-157 OF S-165 SHEETS

F.A.I. RTE.	SECTION	COUNTY	TOTAL SHEETS	SHEET NO.
90/94/290	2013-010R	COOK	747	469D
CONTRACT NO.			60W28	
ILLINOIS FED. AID PROJECT				