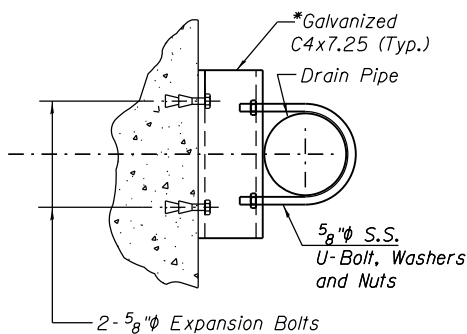


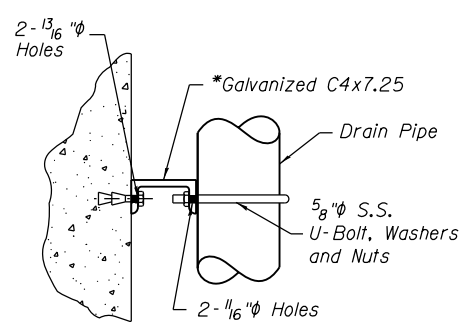
**ELEVATION VIEW**  
(Looking Up Station)

**DRAINAGE SYSTEM**

- S. Abutment
- Pier 1
- Pier 2
- Pier 3
- Pier 10



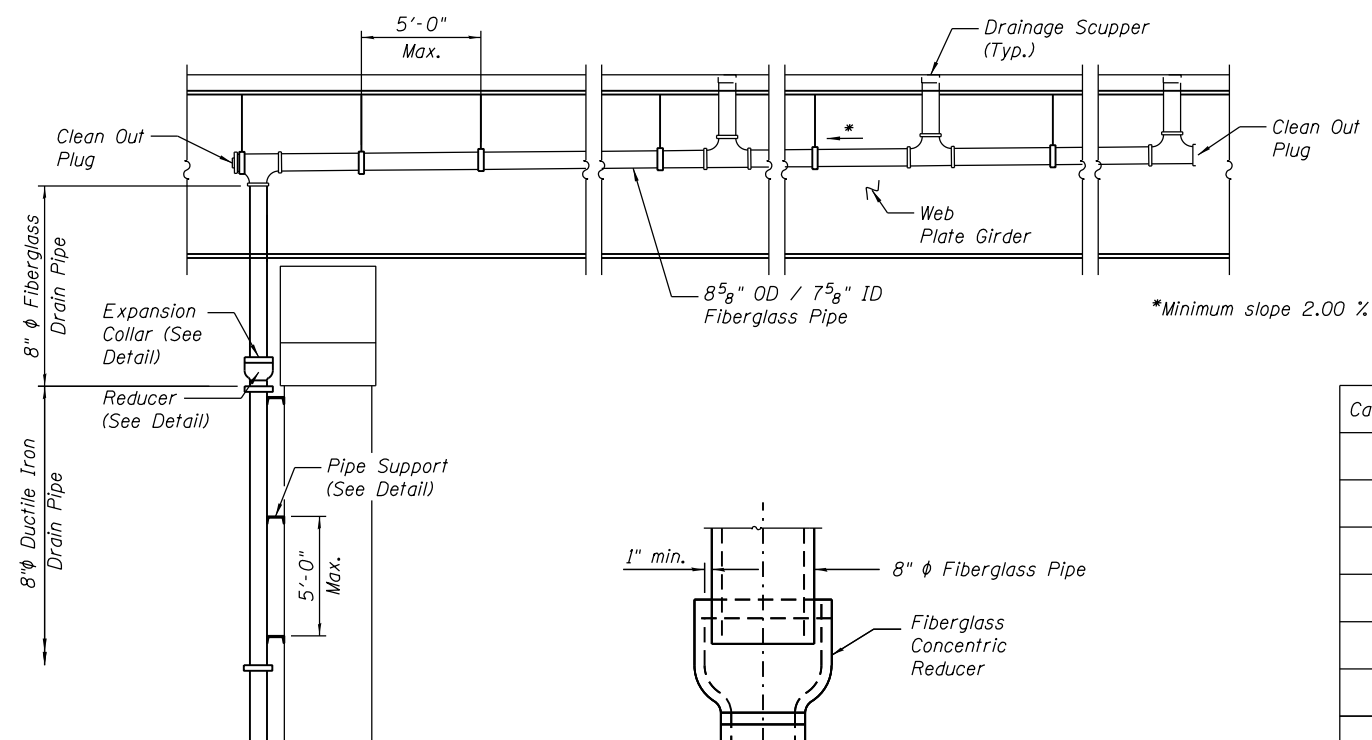
**PLAN**



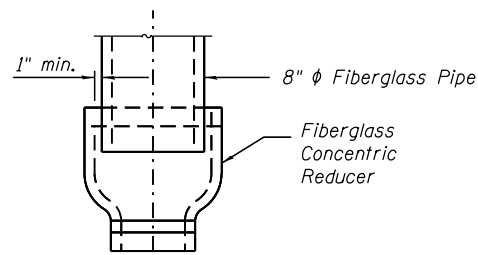
**ELEVATION**

**PIPE SUPPORT DETAIL**

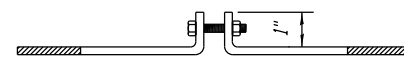
\*Provide curved C6x8.2 to fit Round Pier Columns where needed



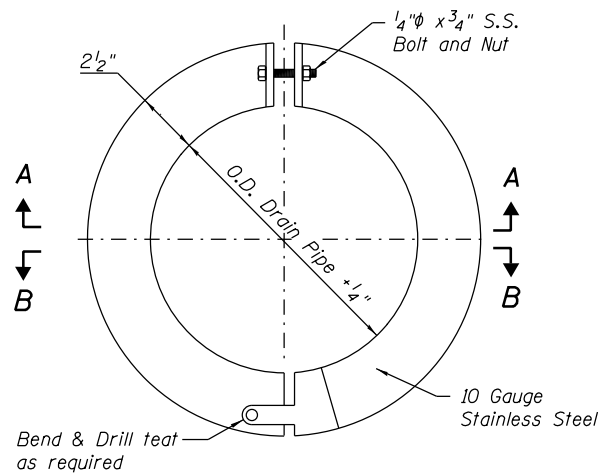
**END VIEW**



**REDUCER DETAIL**



**SECTION A-A**



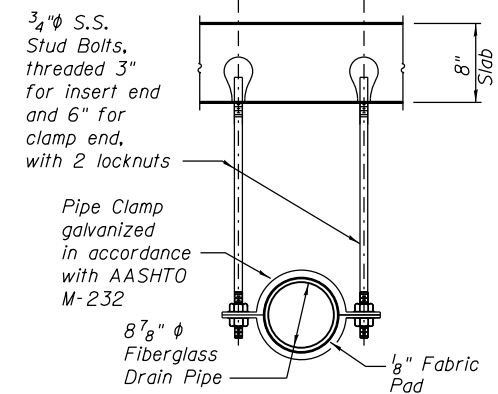
**SECTION B-B**

**DETAIL OF EXPANSION COLLAR**

**TABLE 1**

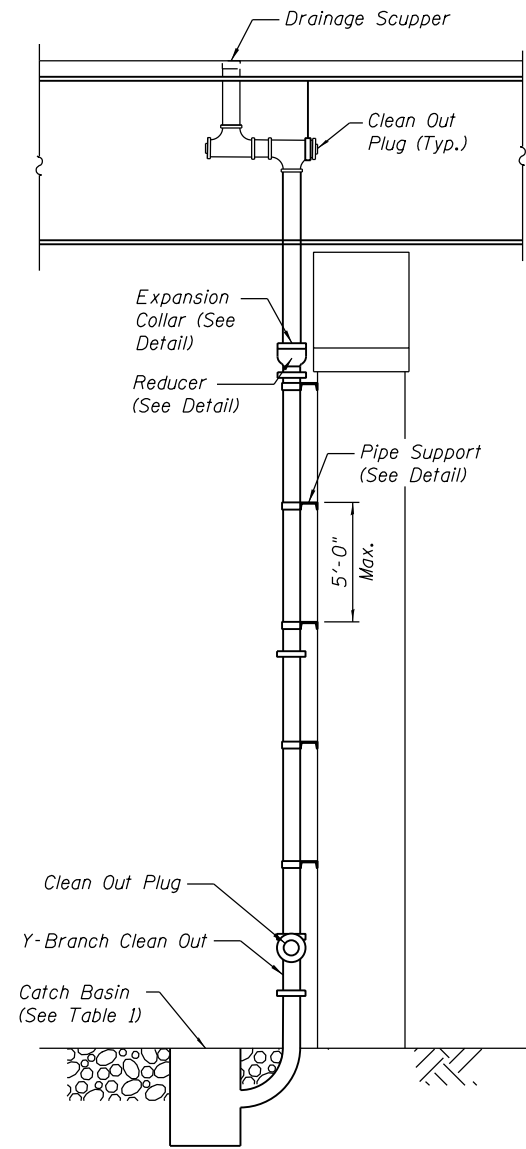
Catch Basin Location	Structure Number
S Abutment	S-35
Pier 1	S-37
Pier 2	S-38
Pier 2	S-38A
Pier 3	S-39
Pier 4	S-40
Pier 5	S-41
Pier 6	S-43
Pier 8	S-44
Pier 10	S-49
W Abutment	S-53

Single coil, flared loop inserts cast in deck for 3/4 inch stud bolts



**PIPE SUPPORT DETAIL**

\*\* Dimension as required by Pipe Clamp



**END VIEW**

**DRAINAGE SYSTEM**

- Pier 4
- Pier 5
- Pier 6
- Pier 8
- W. Abutment

**BILL OF MATERIAL**

ITEM	UNIT	QUANTITY
Drainage System	L. Sum	1

**NOTES:**

- If piping configuration allows, the Contractor shall locate drain pipe for Piers 5, 6 and 8 within the reveals indicated in the Architectural Details. This installation, along with necessary additional pipe bends, supports and related appurtenances are included in the cost of Drainage System.
- S.S. denotes Stainless Steel.

0161705-60W28-5147-Drainage System Details.dgn



USER NAME = floresg	DESIGNED - MK	REVISED
	CHECKED - DD	REVISED
PLOT SCALE = N.T.S.	DRAWN - MK	REVISED
PLOT DATE = 5/7/2014	CHECKED - ATB	REVISED

STATE OF ILLINOIS  
DEPARTMENT OF TRANSPORTATION

DRAINAGE SYSTEM DETAILS  
STRUCTURE NO. 016-1705

SHEET NO. S-147 OF S-165 SHEETS

F.A.I. RTE. 90/94/290	SECTION 2013-010R	COUNTY COOK	TOTAL SHEETS 747	SHEET NO. 462
CONTRACT NO. 60W28			ILLINOIS FED. AID PROJECT	