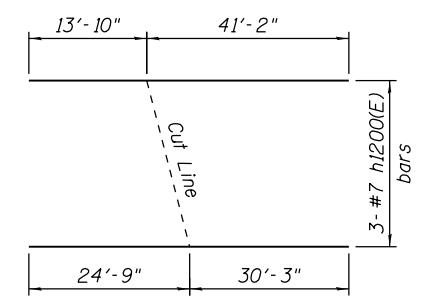
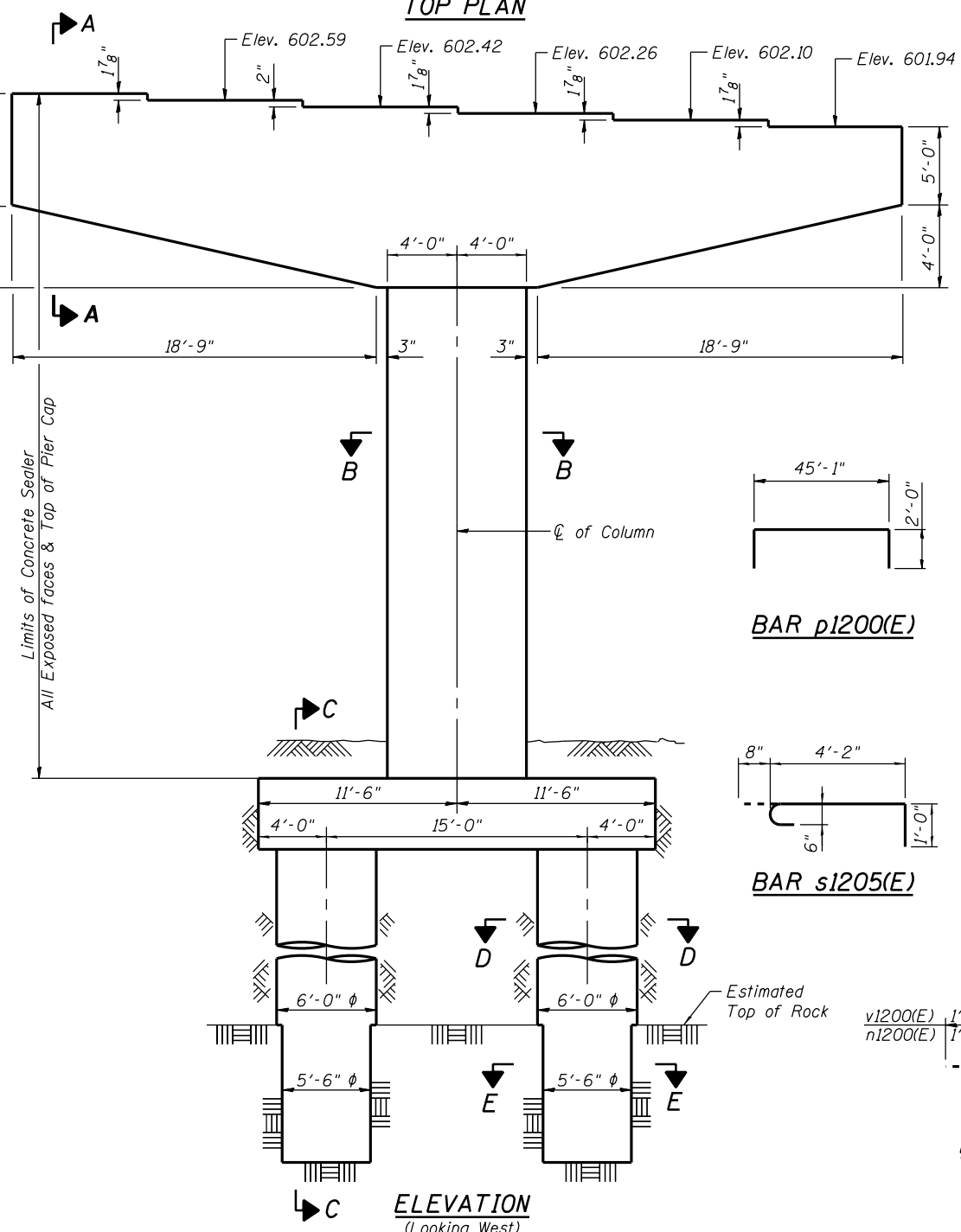
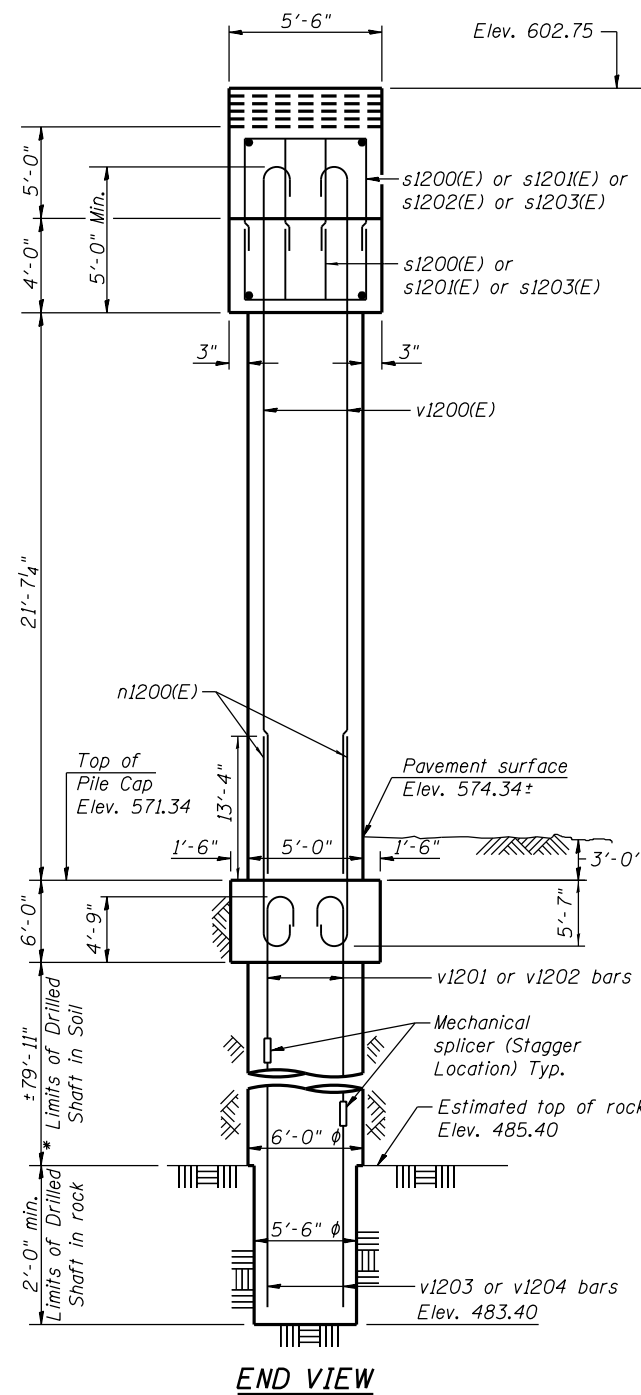
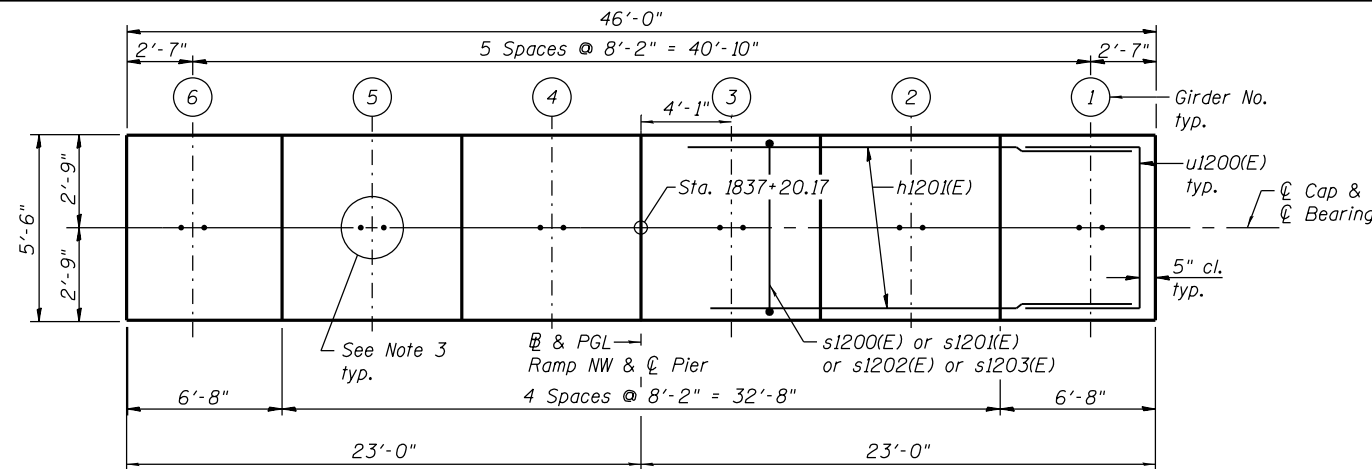


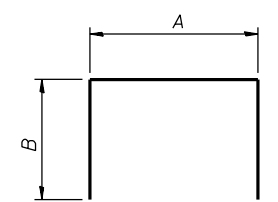
NOTES:

1. Pour steps monolithically with cap.
2. ϕ of Pier is radial to ϕ Ramp NW at Sta. 1837+20.17.
3. For Anchor Bolts Details see sheets S-106 & S-107.
4. For Architectural Details see sheets S-143 thru S-145.
5. See sheet S-142 for Sections and Details.

* The quantities and detailing are based on the estimated elevations shown on the plans. The actual elevations may differ at each shaft and corresponding adjustments shall be made to the drilled shaft and reinforcement quantities and payment limits.



FIELD CUTTING DIAGRAM
Order h1200(E) bars Full Length. Cut as shown and use remainder of bars.

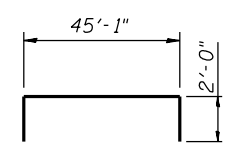


BARS A & B DIMENSIONS

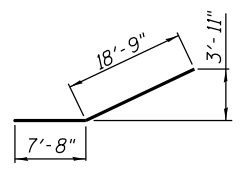
Bar	A	B
s1200(E)	3'-2"	5'-1"
s120(E)	3'-2"	6'-3"
s1202(E)	4'-8"	6'-3"
s1203(E)	3'-2"	4'-4"
t120(E)	22'-4"	4'-6"
t1202(E)	22'-4"	2'-0"
u1200(E)	4'-6"	4'-0"
u120(E)	7'-6"	4'-0"

MIN. LAP LENGTH

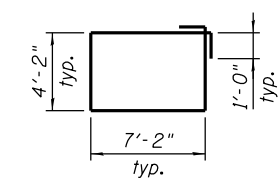
- #6 bars: 3'-10"
- #8 bars: 6'-9"
- #11 bars: 13'-4"



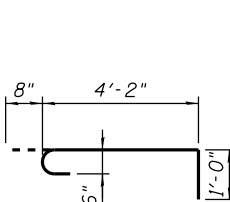
BAR p1200(E)



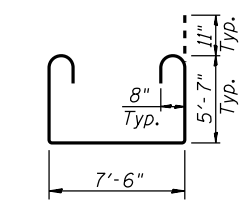
BAR p1202(E)



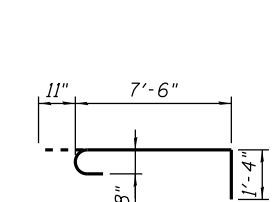
BAR s1204(E)



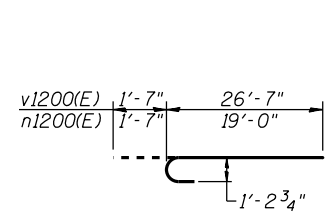
BAR s1205(E)



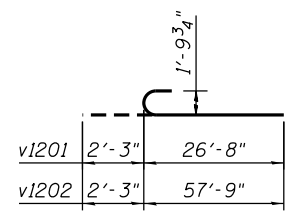
BAR t1200(E)



BAR t1203(E)



BAR v1200(E) & BAR n1200(E)



BARS v1201 & v1202

BILL OF MATERIAL

Bar	No.	Size	Length	Shape
h1200(E)	6	#7	55'-0"	—
h120(E)	16	#7	45'-2"	—
h1202(E)	14	#7	22'-6"	—
n1200(E)	38	#11	20'-7"	U
p1200(E)	12	#11	49'-1"	—
p120(E)	12	#11	43'-8"	—
p1202(E)	16	#8	26'-5"	—
s1200(E)	96	#6	13'-4"	□
s120(E)	180	#6	15'-8"	□
s1202(E)	14	#6	17'-2"	□
s1203(E)	28	#6	11'-10"	□
s1204(E)	43	#6	24'-8"	□
s1205(E)	129	#6	5'-10"	□
sp1200	2	#6	82'-2"	W
t1200(E)	31	#8	20'-6"	—
t120(E)	19	#11	31'-4"	—
t1202(E)	16	#11	26'-4"	—
t1203(E)	31	#8	9'-9"	—
u1200(E)	16	#6	12'-6"	—
u120(E)	14	#7	15'-6"	—
v1200(E)	38	#11	28'-2"	U
v1201	20	#14	28'-11"	U
v1202	20	#14	60'-0"	U
v1203	20	#14	28'-11"	—
v1204	20	#14	60'-0"	—
Concrete Structures		Cu. Yd.	145.7	
Reinforcement Bars, Epoxy Coated		Pound	38,070	
Reinforcement Bars		Pound	33,790	
Drilled Shaft in Soil		Cu. Yd.	167.4	
Drilled Shaft in Rock		Cu. Yd.	3.5	
Concrete Sealer		Sq. Ft.	1,807	
Structure Excavation		Cu. Yd.	148.7	
Crosshole Sonic Logging		Each	1	

** Length is height of spiral.



USER NAME = floresg	DESIGNED - RD	REVISED
	CHECKED - ATB	REVISED
PLOT SCALE = N.T.S.	DRAWN - BM	REVISED
PLOT DATE = 5/7/2014	CHECKED - RD	REVISED

STATE OF ILLINOIS
DEPARTMENT OF TRANSPORTATION

PIER 12 - PLAN AND ELEVATION
STRUCTURE NO. 016-1705

SHEET NO. S-141 OF S-165 SHEETS

F.A.I. RTE. 90/94/290	SECTION 2013-01OR	COUNTY COOK	TOTAL SHEETS 747	SHEET NO. 456
CONTRACT NO. 60W28			ILLINOIS FED. AID PROJECT	

0161705-60W28-S141-Pier.dgn