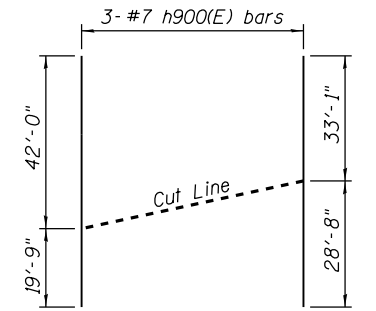
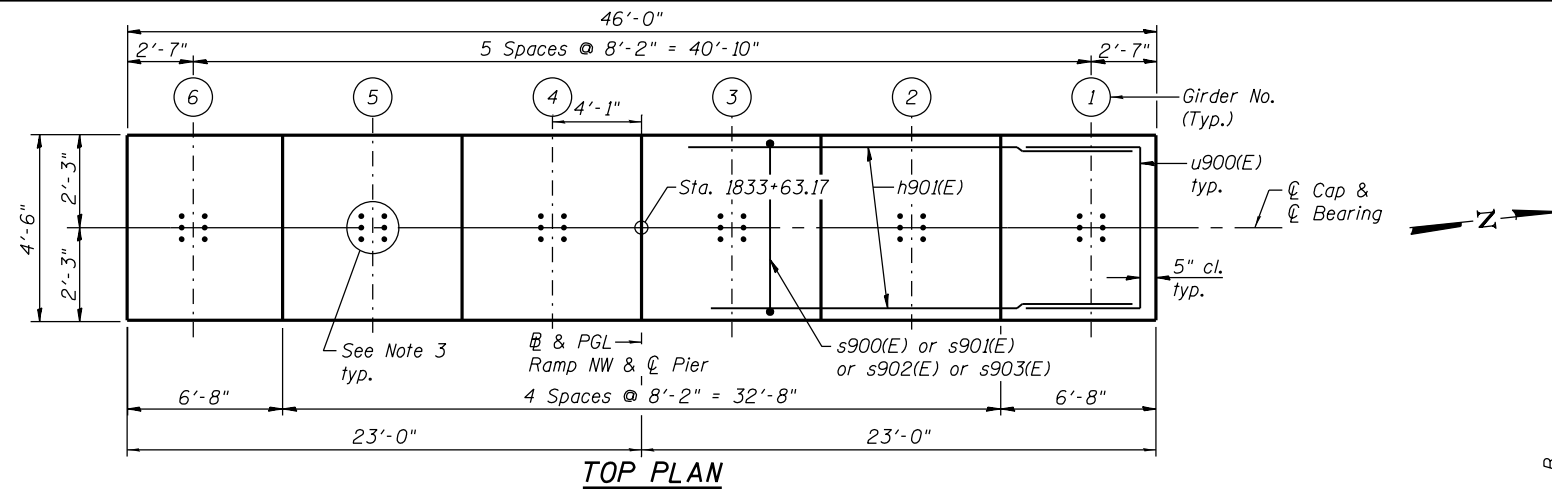


**NOTES:**

1. Pour steps monolithically with cap.
2.  $\phi$  of Pier is radial to  $\phi$  Ramp NW at Sta. 1833+63.17.
3. For Anchor Bolts Details see sheets S-110 & S-111.
4. For Architectural Details see sheets S-143 thru S-145.
5. See sheet S-136 for Sections and Details.

\* The quantities and detailing are based on the estimated elevations shown on the plans. The actual elevations may differ at each shaft and corresponding adjustments shall be made to the drilled shaft and reinforcement quantities and payment limits.

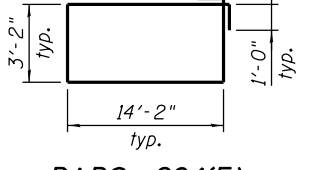
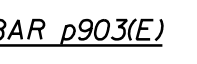
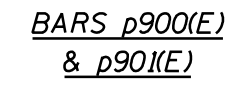


**BILL OF MATERIAL**

Bar	No.	Size	Length	Shape	
h900(E)	6	#7	61'-9"	—	
h901(E)	18	#7	45'-2"	—	
h902(E)	14	#7	22'-6"	—	
h903(E)	24	#5	7'-10"	—	
h904(E)	12	#5	6'-1"	—	
n900(E)	56	#11	20'-7"	U	
p900(E)	8	#11	49'-1"	□	
p901(E)	8	#11	48'-6"	□	
p902(E)	8	#11	43'-8"	□	
p903(E)	12	#8	26'-6"	□	
s900(E)	20	#6	11'-2"	□	
s901(E)	192	#6	15'-10"	□	
s902(E)	28	#6	17'-0"	□	
s903(E)	36	#6	12'-4"	□	
s904(E)	27	#6	36'-8"	□	
s905(E)	162	#6	4'-10"	□	
sp900	2	#6	101'-6"	W	
t900(E)	31	#7	20'-4"	□	
t901(E)	20	#11	31'-4"	□	
t902(E)	13	#11	26'-4"	□	
t903(E)	31	#7	9'-6"	□	
u900(E)	18	#6	11'-6"	□	
u901(E)	14	#7	15'-6"	□	
u902(E)	47	#6	5'-8"	□	
v900(E)	56	#11	33'-5"	U	
v901	20	#14	48'-3"	U	
v902	20	#14	60'-0"	U	
v903	20	#14	48'-3"	—	
v904	20	#14	60'-0"	—	
Concrete Structures				Cu. Yd.	167.9
Reinforcement Bars, Epoxy Coated				Pound	43,400
Reinforcement Bars				Pound	43,170
Drilled Shaft in Soil				Cu. Yd.	207.9
Drilled Shaft in Rock				Cu. Yd.	3.5
Concrete Sealer				Sq. Ft.	2,243
Structure Excavation				Cu. Yd.	114.2
Crosshole Sonic Logging				Each	1

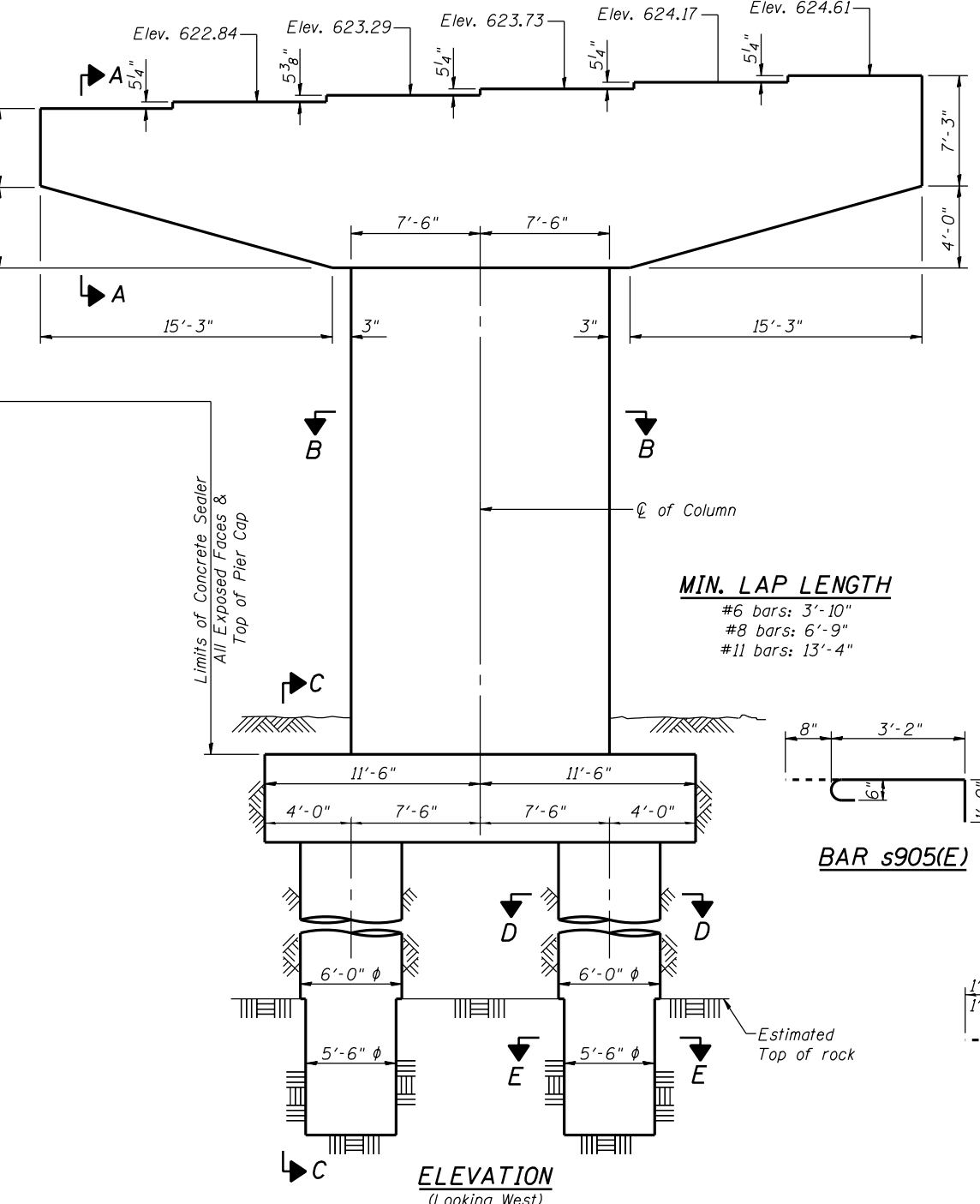
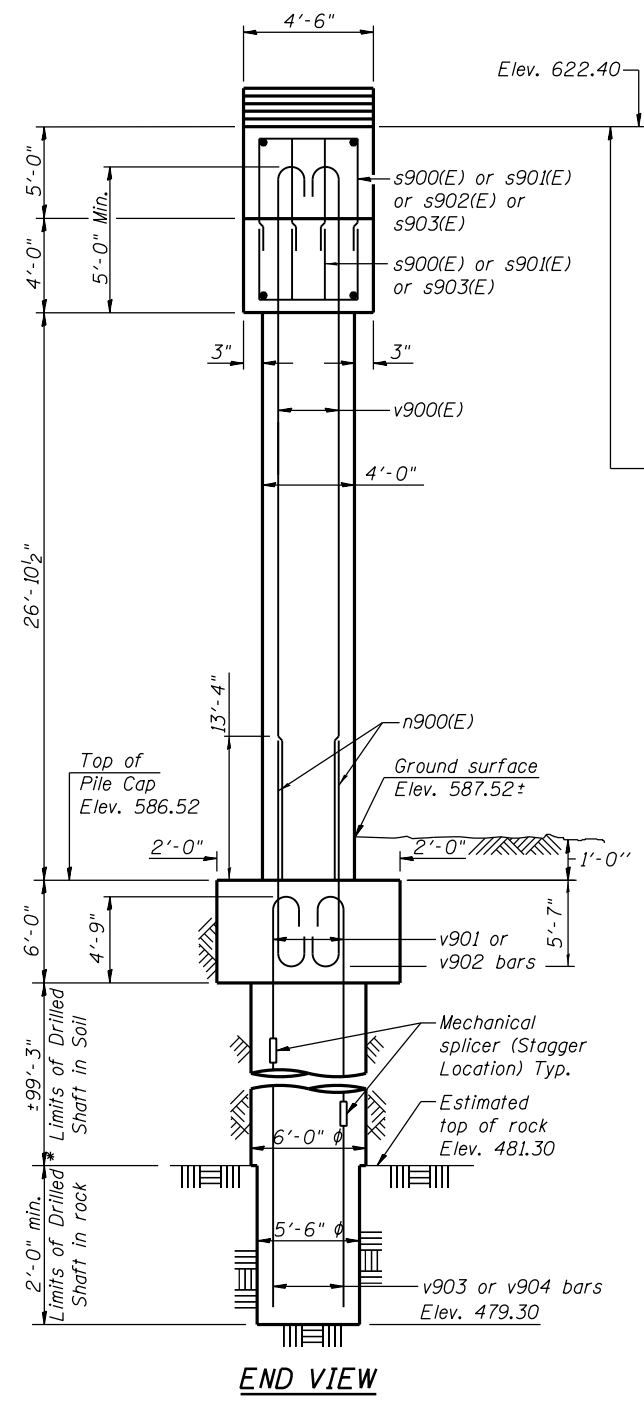
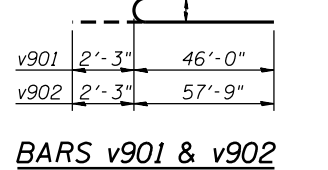
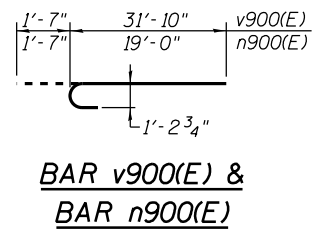
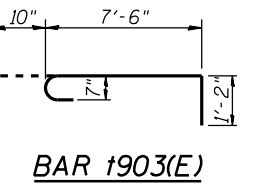
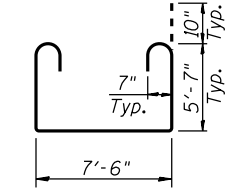
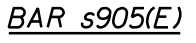
**BARS A & B DIMENSIONS**

Bar	A	B
s900(E)	2'-6"	4'-4"
s901(E)	2'-6"	6'-8"
s902(E)	3'-8"	6'-8"
s903(E)	2'-6"	4'-11"
t901(E)	22'-4"	4'-6"
t902(E)	22'-4"	2'-0"
u900(E)	3'-6"	4'-0"
u901(E)	7'-6"	4'-0"
u902(E)	3'-8"	1'-0"



**MIN. LAP LENGTH**

- #6 bars: 3'-10"
- #8 bars: 6'-9"
- #11 bars: 13'-4"



USER NAME = floresg	DESIGNED - RD	REVISED
PLOT SCALE = N.T.S.	CHECKED - ATB	REVISED
PLOT DATE = 5/7/2014	DRAWN - BM	REVISED
	CHECKED - RD	REVISED

**STATE OF ILLINOIS  
DEPARTMENT OF TRANSPORTATION**

**PIER 9 - PLAN AND ELEVATION  
STRUCTURE NO. 016-1705**

SHEET NO. S-135 OF S-165 SHEETS

F.A.I. RTE. 90/94/290	SECTION 2013-01OR	COUNTY COOK	TOTAL SHEETS 747	SHEET NO. 450
CONTRACT NO. 60W28			ILLINOIS FED. AID PROJECT	

0161705-60W28-S135-Pier.dgn