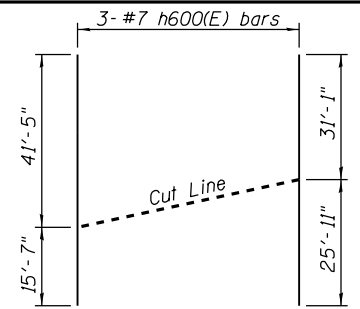
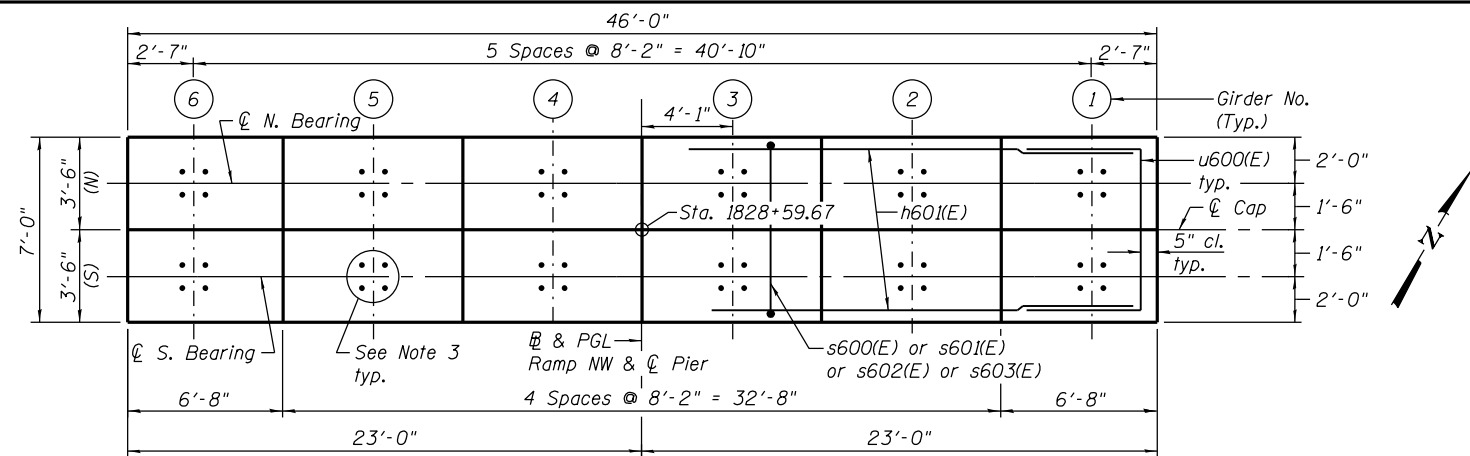


NOTES:

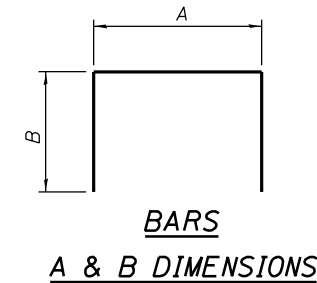
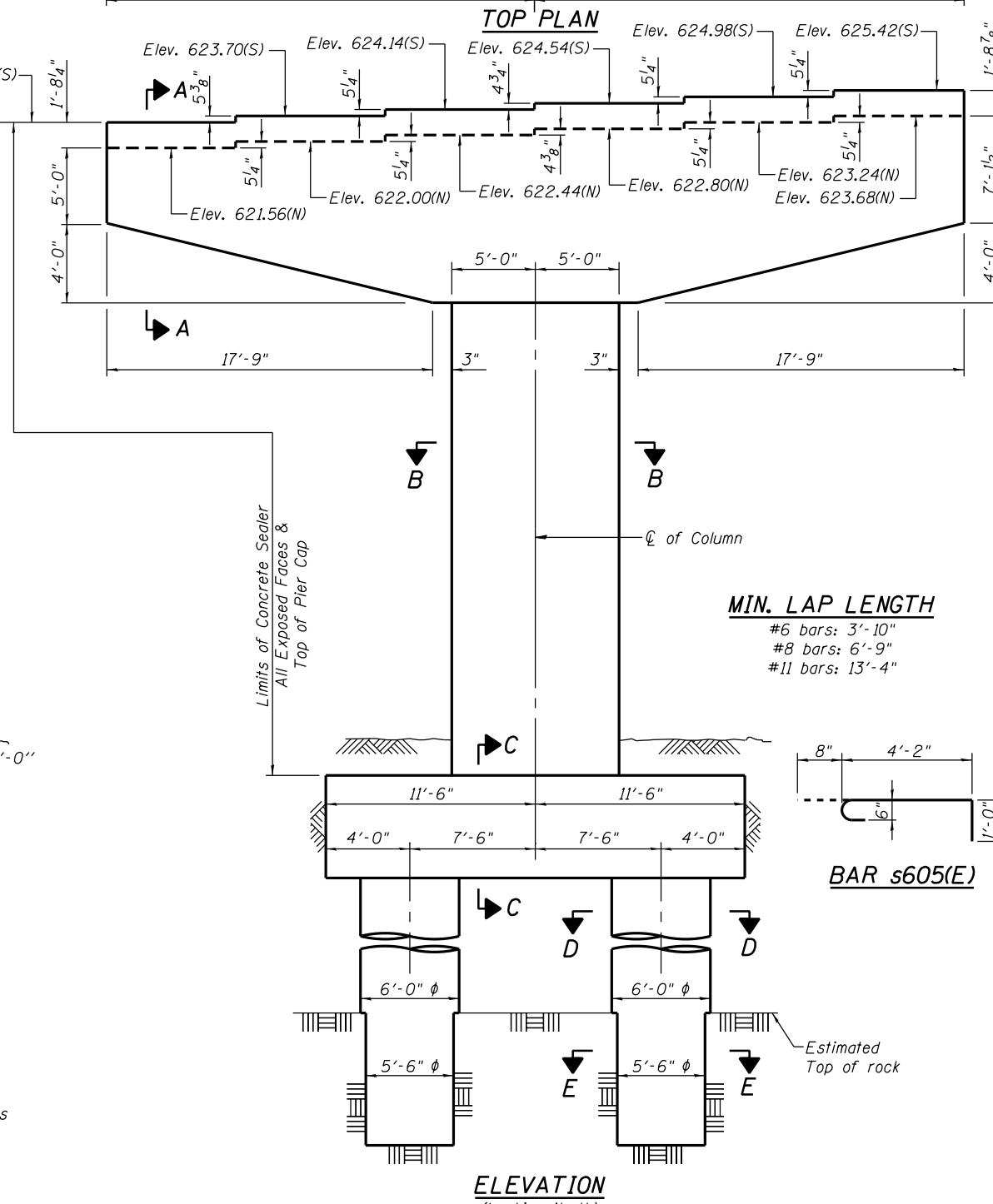
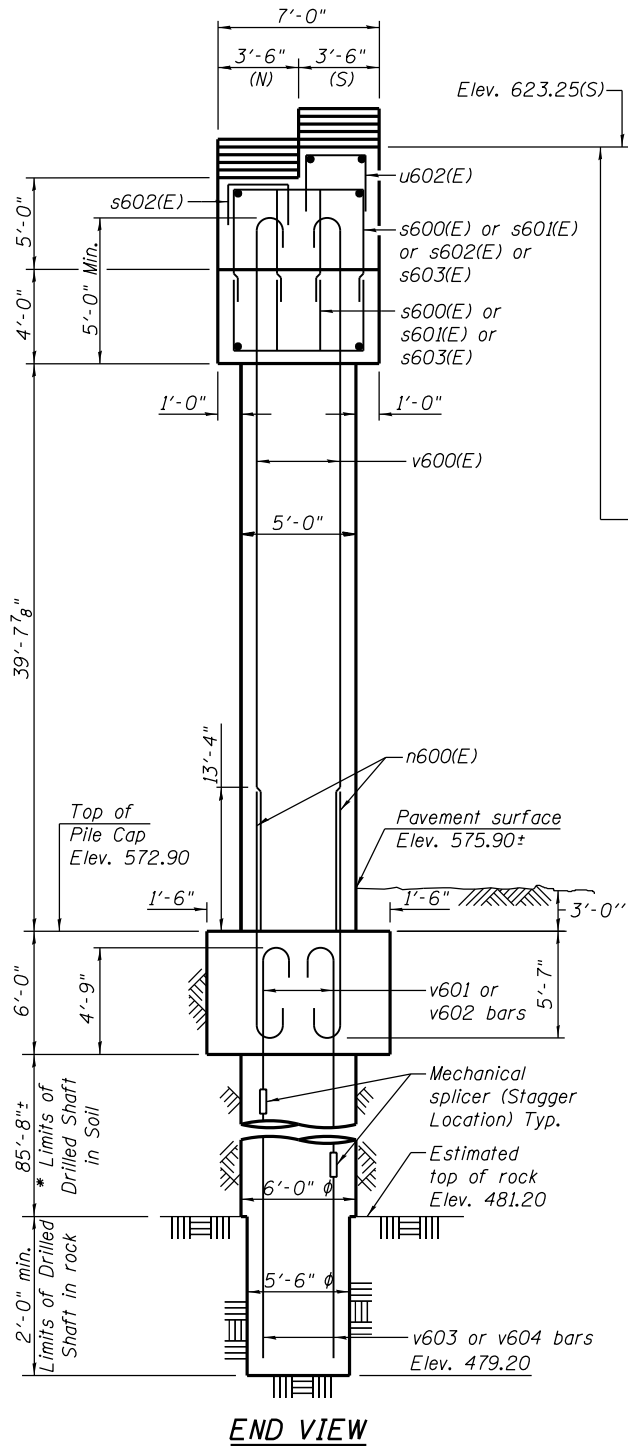
1. Four steps monolithically with cap.
2. ϕ of Pier is radial to ϕ Ramp NW at Sta. 1828+59.67.
3. For Anchor Bolts Details see sheets S-108 & S-109.
4. For Architectural Details see sheets S-143 thru S-145.
5. See sheet S-129 for Sections and Details.
6. (N)-North Girder, (S)-South Girder.

* The quantities and detailing are based on the estimated elevations shown on the plans. The actual elevations may differ at each shaft and corresponding adjustments shall be made to the drilled shaft and reinforcement quantities and payment limits.



FIELD CUTTING DIAGRAM

Order h600(E) bars full length. Cut as shown and use remainder of bars.



Bar	A	B
s600(E)	4'-2"	4'-1"
s601(E)	4'-2"	6'-4"
s602(E)	6'-2"	6'-4"
s603(E)	4'-2"	4'-9"
t601(E)	22'-4"	4'-6"
t602(E)	22'-4"	2'-0"
u600(E)	6'-0"	4'-0"
u601(E)	7'-6"	4'-0"
u602(E)	2'-11"	1'-0"

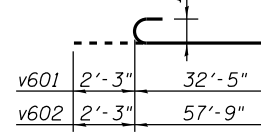
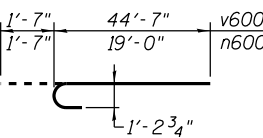
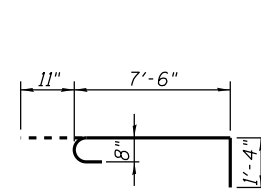
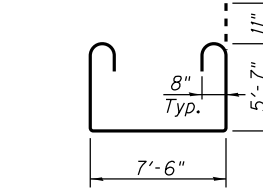
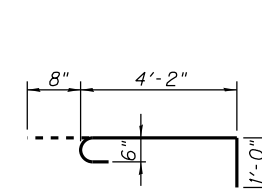
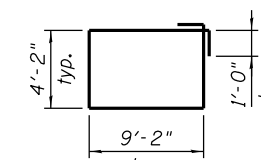
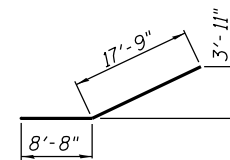
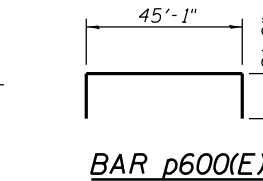
BILL OF MATERIAL

Bar	No.	Size	Length	Shape
h600(E)	6	#7	57'-0"	—
h601(E)	22	#7	45'-2"	—
h602(E)	14	#7	22'-6"	—
h603(E)	40	#5	7'-10"	—
h604(E)	20	#5	6'-1"	—
n600(E)	74	#11	20'-7"	U
p600(E)	14	#11	49'-1"	U
p601(E)	14	#11	43'-8"	U
p602(E)	20	#8	26'-5"	U
s600(E)	24	#6	12'-4"	U
s601(E)	224	#6	16'-10"	U
s602(E)	18	#6	18'-10"	U
s603(E)	40	#6	13'-8"	U
s604(E)	40	#6	28'-8"	U
s605(E)	160	#6	5'-10"	U
sp600	2	#6	87'-11"	W
t600(E)	31	#8	20'-6"	U
t601(E)	28	#11	31'-4"	U
t602(E)	22	#11	26'-4"	U
t603(E)	31	#8	9'-9"	U
u600(E)	18	#7	14'-0"	U
u601(E)	14	#7	15'-6"	U
u602(E)	94	#6	4'-11"	U
v600(E)	74	#11	46'-2"	U
v601	20	#14	34'-8"	U
v602	20	#14	60'-0"	U
v603	20	#14	34'-8"	U
v604	20	#14	60'-0"	U
Concrete Structures		Cu. Yd.	226.1	
Reinforcement Bars, Epoxy Coated		Pound	60,840	
Reinforcement Bars, Drilled Shaft in Soil		Pound	37,690	
Drilled Shaft in Soil		Cu. Yd.	179.4	
Drilled Shaft in Rock		Cu. Yd.	3.5	
Concrete Sealer		Sq. Ft.	2,761	
Braced Excavation		Cu. Yd.	133.2	
Crosshole Sonic Logging		Each	1	

** Length is height of spiral.

MIN. LAP LENGTH

- #6 bars: 3'-10"
- #8 bars: 6'-9"
- #11 bars: 13'-4"



USER NAME = floresg	DESIGNED - RD	REVISED
PLOT SCALE = N.T.S.	CHECKED - ATB	REVISED
PLOT DATE = 5/7/2014	DRAWN - BM	REVISED
	CHECKED - RD	REVISED

STATE OF ILLINOIS
DEPARTMENT OF TRANSPORTATION

PIER 6 - PLAN AND ELEVATION
STRUCTURE NO. 016-1705

SHEET NO. S-128 OF S-165 SHEETS

F.A.I. RTE. 90/94/290	SECTION 2013-010R	COUNTY COOK	TOTAL SHEETS 747	SHEET NO. 444
CONTRACT NO. 60W28			ILLINOIS FED. AID PROJECT	

0161705-60W28-S128-Pier.dgn