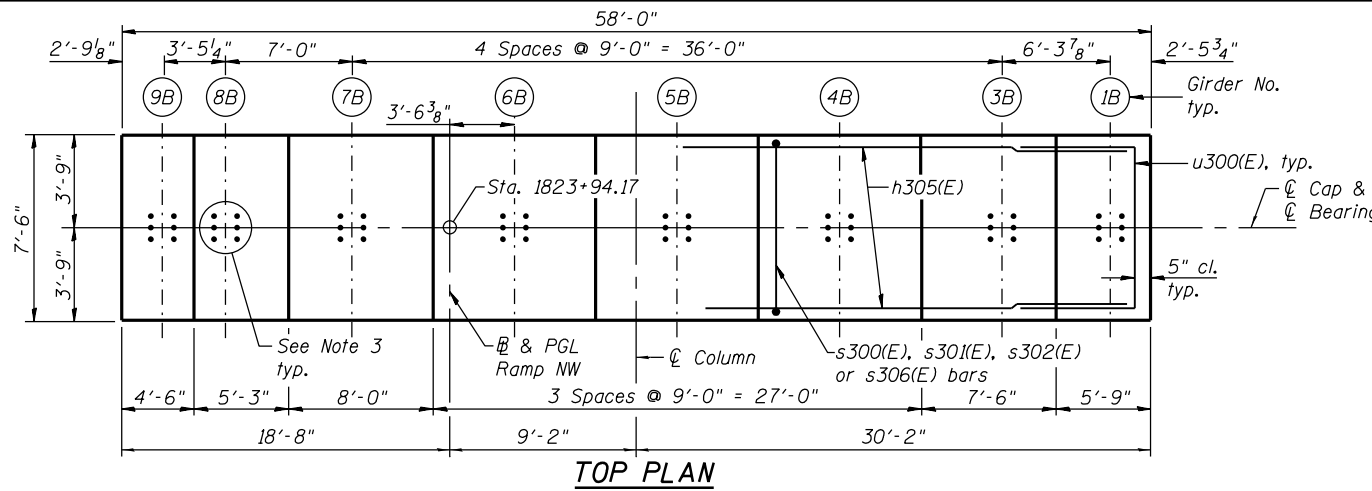


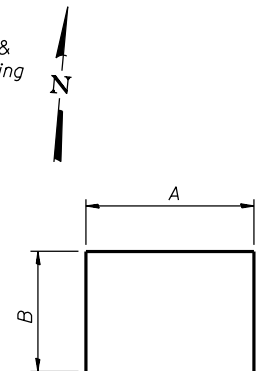
NOTES:

1. Pour steps monolithically with cap.
2. ϕ of Pier is radial to ϕ Ramp NW at Sta. 1823+94.17.
3. For Anchor Bolts Details see sheets S-110 & S-111.
4. For Architectural Details see sheets S-143 thru S-145.
5. See sheet S-121 & S-122 for Sections and Details.
6. Concrete for Pier 3 shall be in accordance with Section 503 of Standard Specifications except that the max. design of concrete shall attain a compressive strength of 5,000 psi at 14 days.

* The quantities and detailing are based on the estimated elevations shown on the plans. The actual elevations may differ at each shaft and corresponding adjustments shall be made to the drilled shaft and reinforcement quantities and payment limits.



TOP PLAN

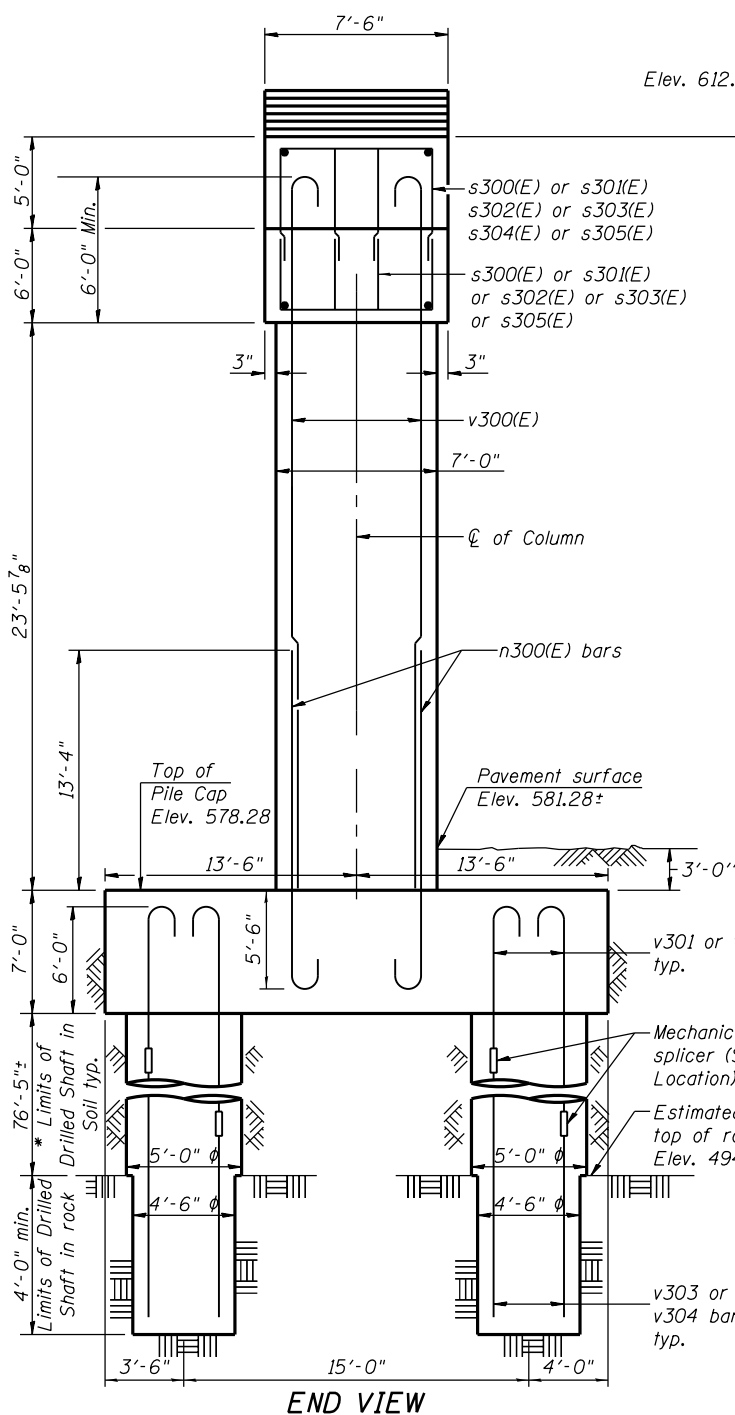


BARS A & B DIMENSIONS

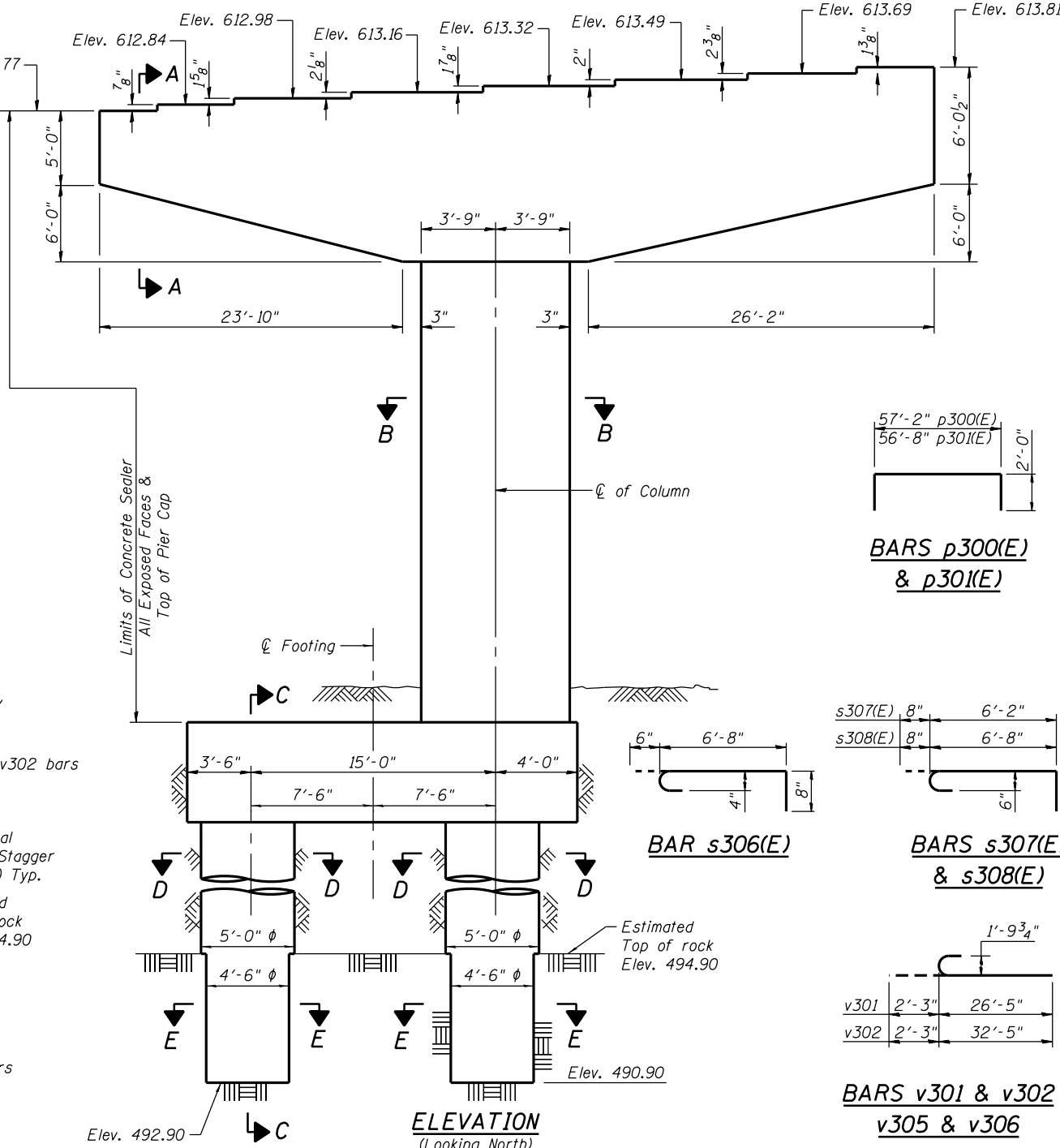
Bar	A	B
s300(E)	5'-0"	4'-6"
s301(E)	5'-0"	5'-2"
s302(E)	5'-0"	6'-7"
s303(E)	5'-0"	7'-4"
s304(E)	6'-8"	7'-4"
s305(E)	5'-0"	5'-7"
t300(E)	21'-10"	3'-3"
u300(E)	6'-8"	4'-0"
u301(E)	6'-8"	1'-0"
u303(E)	22'-6"	4'-0"
w300(E)	26'-4"	3'-3"

BILL OF MATERIAL

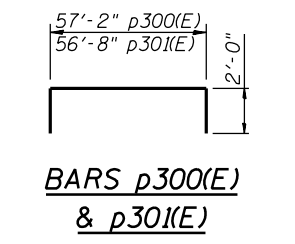
Bar	No.	Size	Length	Shape
h300(E)	12	#7	67'-0"	—
h301(E)	22	#7	57'-2"	—
h302(E)	24	#5	8'-0"	—
h303(E)	8	#5	7'-0"	—
h304(E)	8	#5	4'-6"	—
h305(E)	8	#5	6'-6"	—
h306(E)	8	#5	5'-0"	—
h307(E)	22	#7	26'-6"	—
n300(E)	68	#11	20'-5"	U
p300(E)	20	#11	61'-2"	U
p301(E)	20	#11	60'-8"	U
p302(E)	20	#11	56'-2"	U
p303(E)	10	#8	33'-8"	U
p304(E)	10	#8	31'-4"	U
s300(E)	28	#6	14'-0"	U
s301(E)	60	#6	15'-4"	U
s302(E)	112	#6	18'-2"	U
s303(E)	228	#6	19'-8"	U
s304(E)	16	#6	21'-4"	U
s305(E)	100	#6	16'-2"	U
s306(E)	14	#4	7'-10"	U
s307(E)	94	#6	7'-10"	U
s308(E)	94	#6	8'-4"	U
s309(E)	47	#6	27'-8"	U
sp300	5	#6	80'-8"	W
t300(E)	116	#11	28'-10"	U
u300(E)	22	#7	14'-8"	U
u301(E)	60	#6	8'-8"	U
u303(E)	22	#7	30'-6"	U
v300(E)	68	#11	31'-1"	U
v301	80	#14	28'-8"	U
v302	80	#14	34'-8"	U
v303	80	#14	60'-0"	U
v304	80	#14	54'-0"	U
w300(E)	118	#11	32'-10"	U
Concrete Structures		Cu. Yd.	347.0	
Reinforcement Bars, Epoxy Coated		Pound	105,240	
Reinforcement Bars		Pound	124,680	
Drilled Shaft in Soil		Cu. Yd.	277.9	
Drilled Shaft in Rock		Cu. Yd.	11.8	
Concrete Sealer		Sq. Ft.	2,628	
Braced Excavation		Cu. Yd.	271.4	
Crosshole Sonic Logging		Each	1	



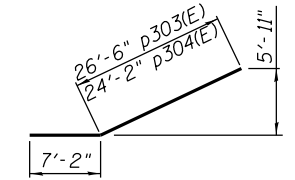
END VIEW



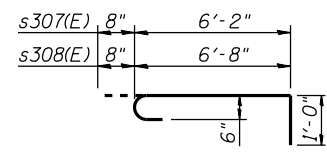
ELEVATION (Looking North)



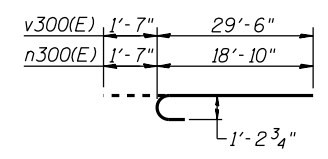
BARS p300(E) & p301(E)



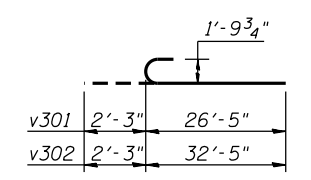
BARS p303(E) & p304(E)



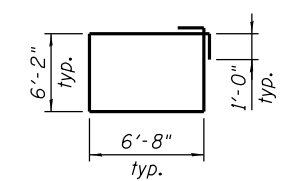
BARS s307(E) & s308(E)



BARS v300(E) & n300(E)



BARS v301 & v302 v305 & v306



BAR s307(E)

** Length is height of spiral.

MIN. LAP LENGTH

- #6 bars: 3'-10"
- #8 bars: 6'-9"
- #11 bars: 13'-4"

0161705-60W28-S120-Pier.dgn



USER NAME = floresg	DESIGNED - RD	REVISED
PLOT SCALE = N.T.S.	CHECKED - ATB	REVISED
PLOT DATE = 5/7/2014	DRAWN - BM	REVISED
	CHECKED - RD	REVISED

**STATE OF ILLINOIS
DEPARTMENT OF TRANSPORTATION**

**PIER 3 - PLAN AND ELEVATION
STRUCTURE NO. 016-1705**

SHEET NO. S-120 OF S-165 SHEETS

F.A.I. RTE. 90/94/290	SECTION 2013-010R	COUNTY COOK	TOTAL SHEETS 747	SHEET NO. 436
CONTRACT NO. 60W28			ILLINOIS FED. AID PROJECT	