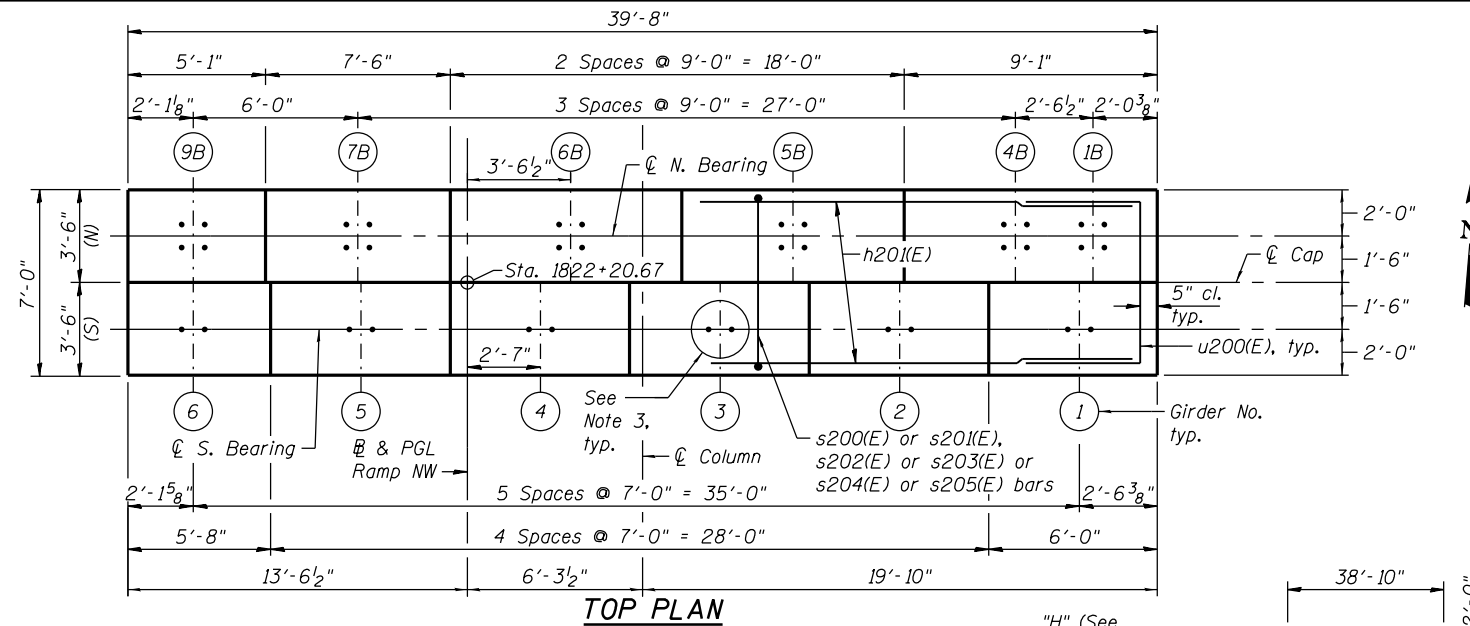


NOTES:

1. Pour steps monolithically with cap.
2. ϕ of Pier is radial to ϕ Ramp NW at Sta. 1822+20.67.
3. For Anchor Bolts Details see sheets S-106, S-108, and S-109.
4. For Architectural Details see sheets S-143 thru S-145.
5. See sheet S-119 for Sections and Details.
6. (N)-North Girder, (S)-South Girder.

* The quantities and detailing are based on the estimated elevations shown on the plans. The actual elevations may differ at each shaft and corresponding adjustments shall be made to the drilled shaft and reinforcement quantities and payment limits.



TOP PLAN

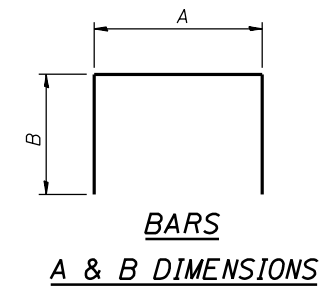
TOP OF SEAT ELEVATION

South Bearing Seat			North Bearing Seat		
Girder No.	Seat Elev.	Step "H"	Girder No.	Seat Elev.	Step "H"
1	609.21	1 1/4"	1B	609.21	-
2	609.11	1 5/8"	4B	609.21	2 1/8"
3	608.97	1 5/8"	5B	609.03	2 3/8"
4	608.83	1 7/8"	6B	608.83	1 7/8"
5	608.67	1 1/2"	7B	608.67	1 3/8"
6	608.55	-	9B	608.55	-

BILL OF MATERIAL

Bar	No.	Size	Length	Shape
h200(E)	8	#7	55'-11"	—
h201(E)	12	#7	38'-10"	—
h202(E)	16	#5	8'-0"	—
h203(E)	8	#7	5'-0"	—
h204(E)	16	#7	22'-3"	—
n200(E)	56	#11	18'-5"	—
p200(E)	20	#11	42'-10"	—
p201(E)	20	#8	23'-11"	—
s200(E)	8	#6	11'-8"	—
s201(E)	16	#6	12'-4"	—
s202(E)	36	#6	13'-8"	—
s203(E)	32	#6	14'-0"	—
s204(E)	32	#6	19'-0"	—
s205(E)	36	#6	16'-6"	—
s206(E)	18	#6	36'-8"	—
s207(E)	108	#6	4'-10"	—
sp200	2	#6	81'-4"	—
t200(E)	30	#7	18'-4"	—
t201(E)	21	#11	29'-1"	—
t202(E)	17	#11	26'-1"	—
t203(E)	30	#7	9'-6"	—
u200(E)	12	#6	14'-2"	—
u202(E)	22	#6	8'-2"	—
u203(E)	16	#7	15'-4"	—
v200(E)	56	#11	26'-1"	—
v201	20	#14	27'-4"	—
v202	20	#14	33'-4"	—
v203	20	#14	60'-0"	—
v204	20	#14	54'-0"	—
Concrete Structures		Cu. Yd.	155.1	
Reinforcement Bars, Epoxy Coated		Pound	34,910	
Reinforcement Bars		Pound	34,800	
Drilled Shaft in Soil		Cu. Yd.	165.6	
Drilled Shaft in Rock		Cu. Yd.	3.5	
Concrete Sealer		Sq. Ft.	1,891	
Braced Excavation		Cu. Yd.	69.4	
Crosshole Sonic Logging		Each	1	

** Length is height of spiral.



BARS A & B DIMENSIONS

Bar	A	B
h200(E)	4'-0"	3'-10"
s200(E)	4'-0"	4'-2"
s202(E)	4'-0"	4'-10"
s203(E)	4'-0"	5'-0"
s204(E)	6'-2"	6'-5"
s205(E)	4'-0"	6'-3"
t201(E)	22'-1"	3'-6"
t202(E)	22'-1"	2'-0"
u200(E)	6'-2"	4'-0"
u202(E)	6'-2"	1'-0"
u203(E)	7'-4"	4'-0"

BAR p200(E)

BAR p201(E)

BAR s206(E)

BAR t200(E)

BAR t203(E)

BAR v200(E) & BAR n200(E)

BAR s207(E)

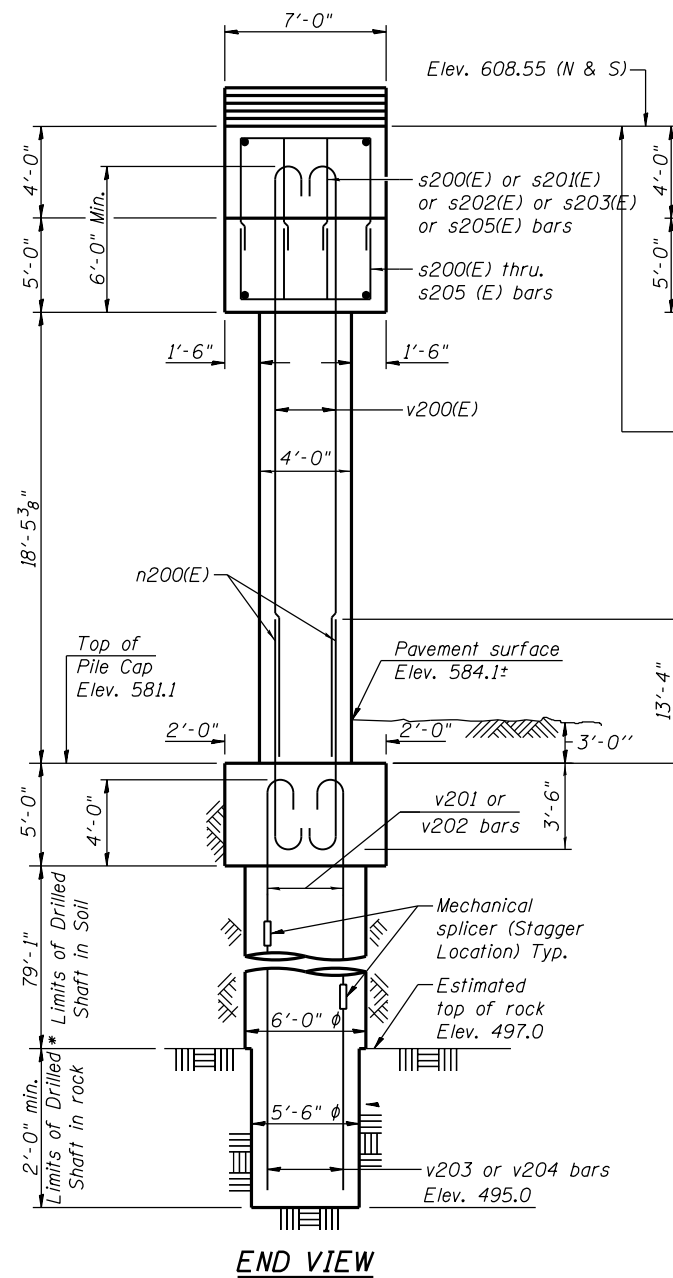
BARS v201 & v202

FIELD CUTTING DIAGRAM

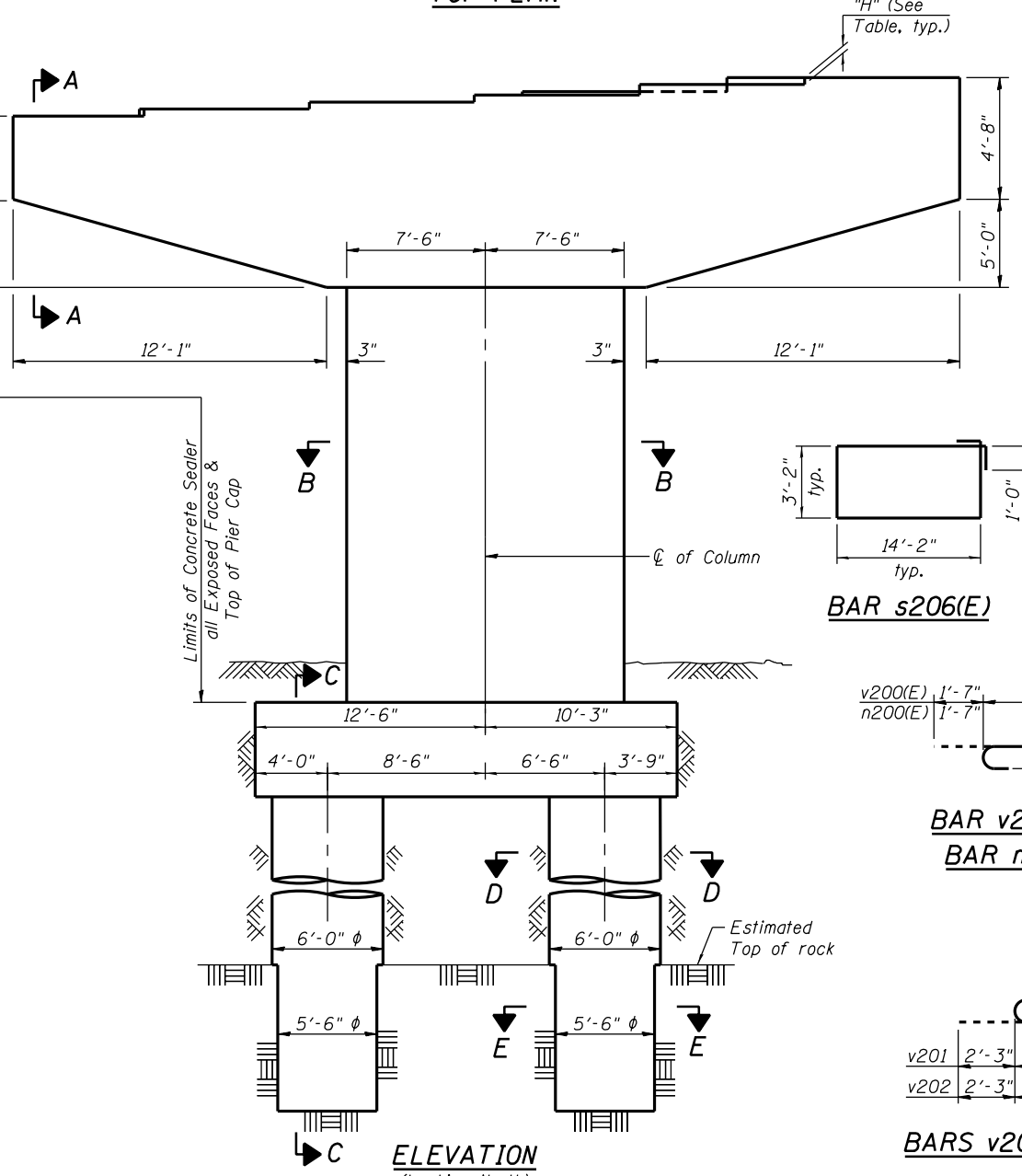
Order h200(E) bars Full Length. Cut as shown and use remainder of bars.

MIN. LAP LENGTH

- #6 bars: 3'-10"
- #8 bars: 6'-9"
- #11 bars: 13'-4"



END VIEW



ELEVATION (Looking North)



USER NAME = floresg	DESIGNED - RD	REVISED
	CHECKED - ATB	REVISED
PLOT SCALE = N.T.S.	DRAWN - BM	REVISED
PLOT DATE = 5/7/2014	CHECKED - RD	REVISED

STATE OF ILLINOIS
DEPARTMENT OF TRANSPORTATION

PIER 2 - PLAN AND ELEVATION
STRUCTURE NO. 016-1705

SHEET NO. S-118 OF S-165 SHEETS

F.A.I. RTE. 90/94/290	SECTION 2013-010R	COUNTY COOK	TOTAL SHEETS 747	SHEET NO. 434
CONTRACT NO. 60W28			ILLINOIS FED. AID PROJECT	

0161705-60W28-S118-Pier.dgn