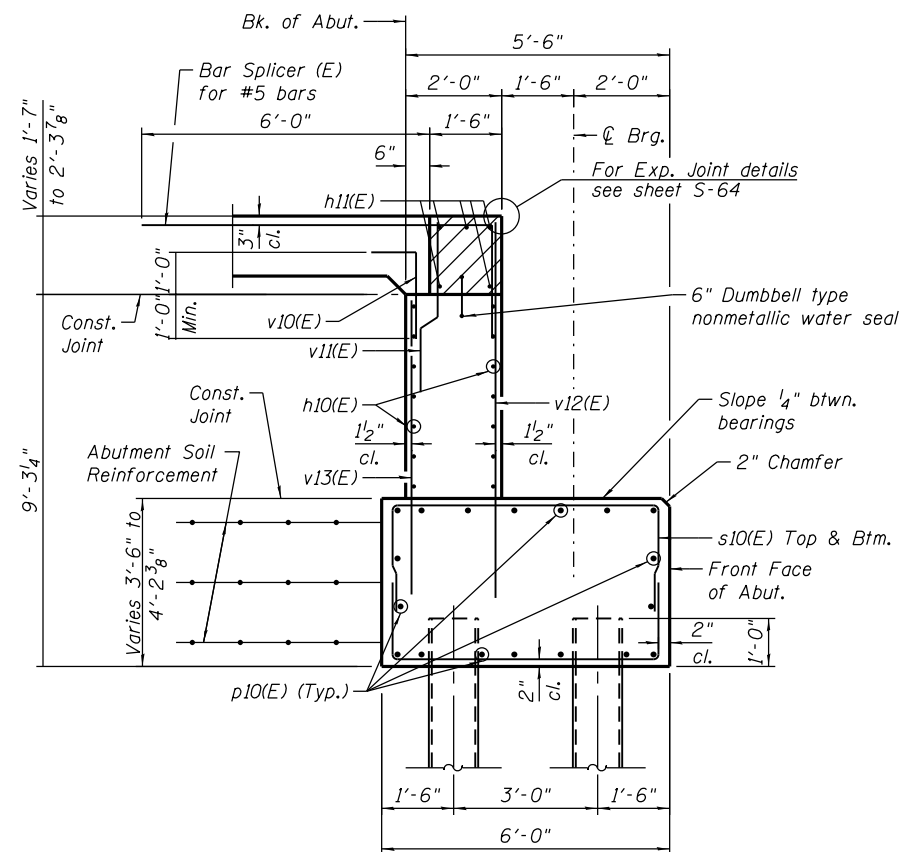
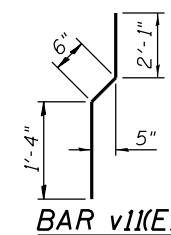
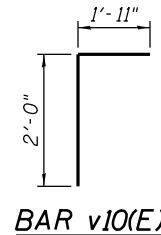
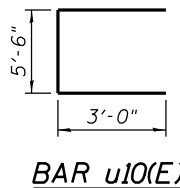
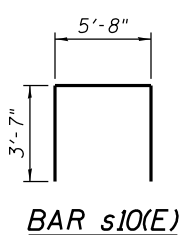


**SETTING PILES
IN ROCK DETAIL**



SECTION A-A



**SOUTH ABUTMENT
BILL OF MATERIAL**

Bar	No.	Size	Length	Shape
h10(E)	14	#5	39'-0"	—
h11(E)	5	#6	39'-10"	—
p10(E)	18	#9	39'-0"	—
s10(E)	106	#5	12'-10"	U
u10(E)	10	#6	11'-6"	U
v10(E)	40	#5	3'-11"	L
v11(E)	40	#5	3'-11"	L
v12(E)	40	#5	8'-11"	—
v13(E)	40	#5	6'-9"	—
Concrete Structures			Cu. Yd.	51.0
Reinforcement Bars, Epoxy Coated			Pound	5,830
Furnishing Steel Piles HPI2x84			Foot	1,365
Setting Pile in Rock			Each	13
Concrete Sealer			Sq. Ft.	567

NOTES:

- For details and quantity of Bar Splicers see sheet S-146.
- Cut s10(E) bars in the field to fit. Min. bar lap at field cut location shall not be less than 2'-11".

0161705-60W28-5113-SouthAbutDetails.dgn



USER NAME = floresg
 PLOT SCALE = N.T.S.
 PLOT DATE = 5/7/2014

DESIGNED - RD
 CHECKED - ATB
 DRAWN - GF
 CHECKED - ATB
 REVISED
 REVISED
 REVISED
 REVISED

**STATE OF ILLINOIS
 DEPARTMENT OF TRANSPORTATION**

**SOUTH ABUTMENT DETAILS
 STRUCTURE NO. 016-1705**

SHEET NO. S-113 OF S-165 SHEETS

F.A.I. RTE.	SECTION	COUNTY	TOTAL SHEETS	SHEET NO.
90/94/290	2013-010R	COOK	747	429
CONTRACT NO.			60W28	
ILLINOIS FED. AID PROJECT				