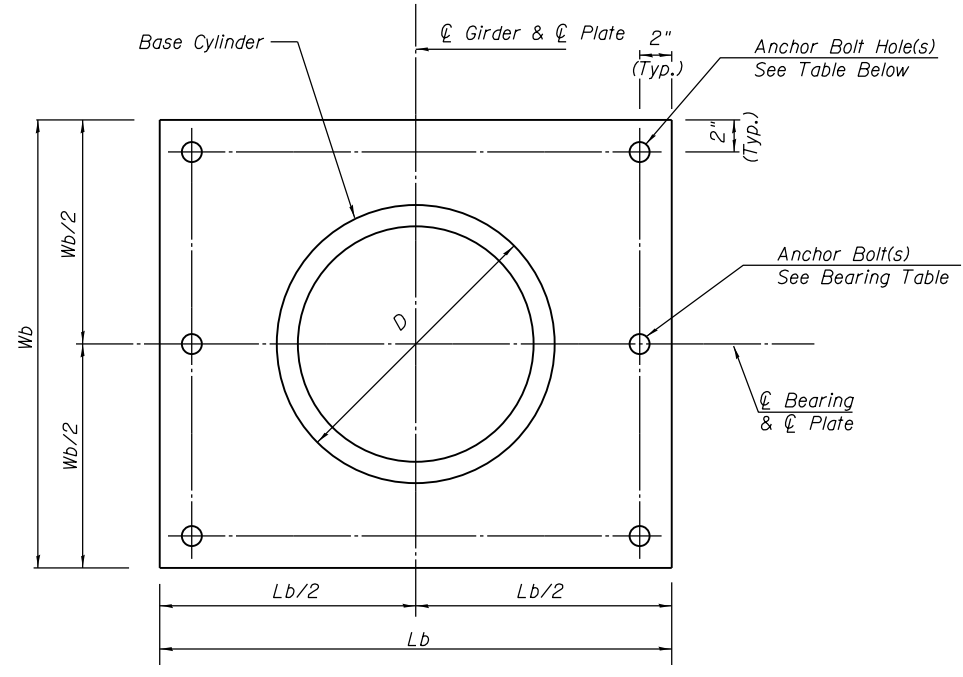
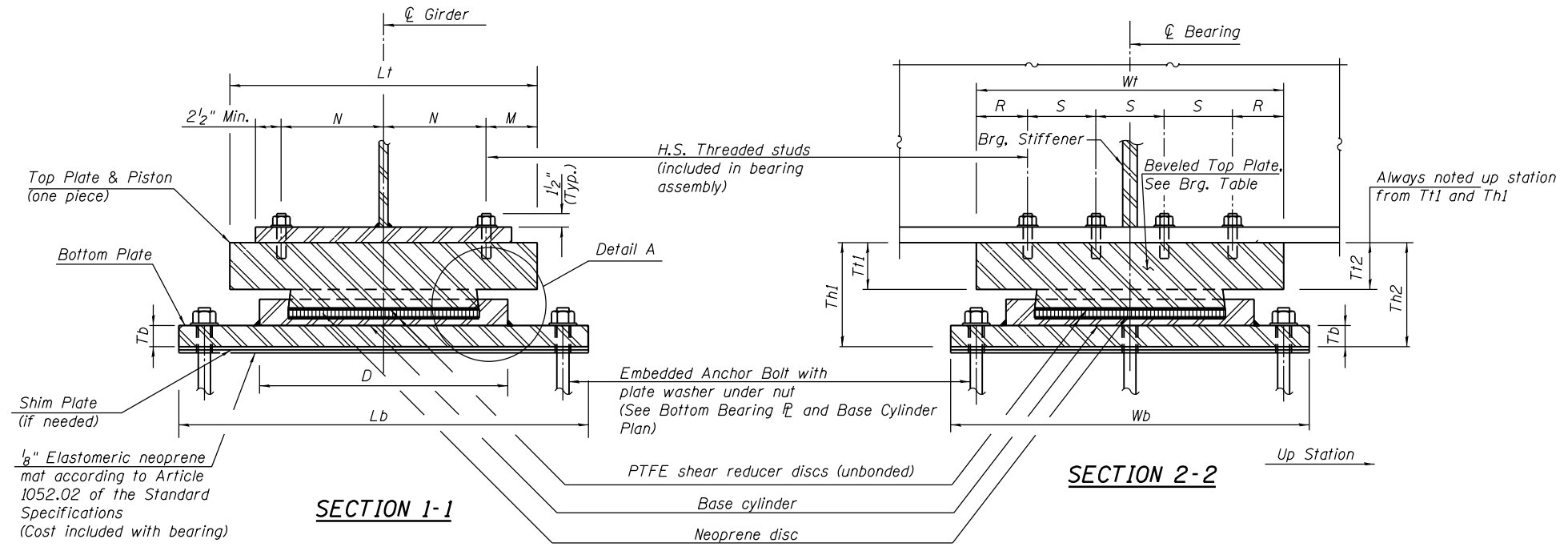


TOP BEARING PLATE AND PISTON PLAN

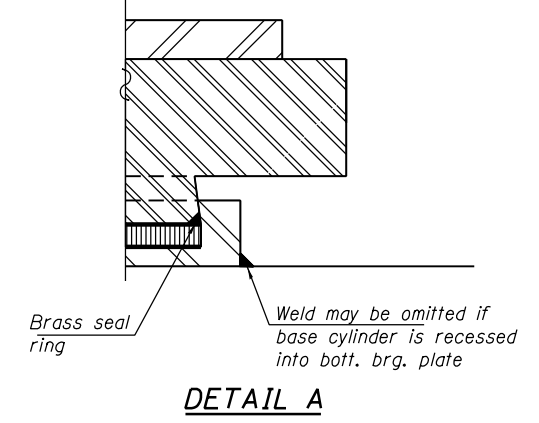


BOTTOM BEARING PLATE AND BASE CYLINDER PLAN



SECTION 1-1

SECTION 2-2



DETAIL A

NOTES:

1. The Structural Steel for the top & bottom bearing plates shall be AASHTO M270 Grade 50.
2. For anchor bolt type and details see Bearing Dimensions Table.
3. Top & bottom plates, threaded studs, washers & shim plates are included in the cost of the Bearings.
4. Anchor bolts for bearings shall be placed in holes drilled in the concrete through holes in the bottom bearing plate after members are in place.
5. Drilled and set anchor bolts shall be installed according to Article 521.06 of the Standard Specifications.
6. Two 1/8 in. adjusting shims shall be provided for each bearing in addition to all other plates or shims and placed as shown on bearing details.
7. Work this sheet with sheet S-111.
8. All (embedded and separate) bearing plates, anchor bolts, nuts, washers and pintles shall be galvanized according to AASHTO M111 or M232 as applicable.
9. If base cylinder is recessed into the bottom bearing plate, the thickness of the bottom plate shall be Tb plus the depth of the recess.

ANCHOR BOLT DETAILS

Bolt Dia. x Length**	Plate Washer
1" x 12"	2 1/4" x 2 1/4" x 5/16"
1 1/4" x 15"	2 3/4" x 2 3/4" x 5/16"

**Length shown is minimum required embedment length.

BASE PLATE HOLE TABLE

Anchor Bolt φ	Max. Hole φ
1 1/4"	1 3/4"
1"	1 1/2"

0161705-60W28-5110-Bear-Ing.dgn



USER NAME = floresg	DESIGNED - ATB	REVISED
	CHECKED - EJO	REVISED
PLOT SCALE = N.T.S.	DRAWN - MRK	REVISED
PLOT DATE = 5/7/2014	CHECKED - ATB	REVISED

**STATE OF ILLINOIS
DEPARTMENT OF TRANSPORTATION**

**FIXED POT BEARING DETAILS I
STRUCTURE NO. 016-1705**

SHEET NO. S-110 OF S-165 SHEETS

F.A.I. RTE.	SECTION	COUNTY	TOTAL SHEETS	SHEET NO.
90/94/290	2013-010R	COOK	747	426
CONTRACT NO. 60W28				
ILLINOIS FED. AID PROJECT				