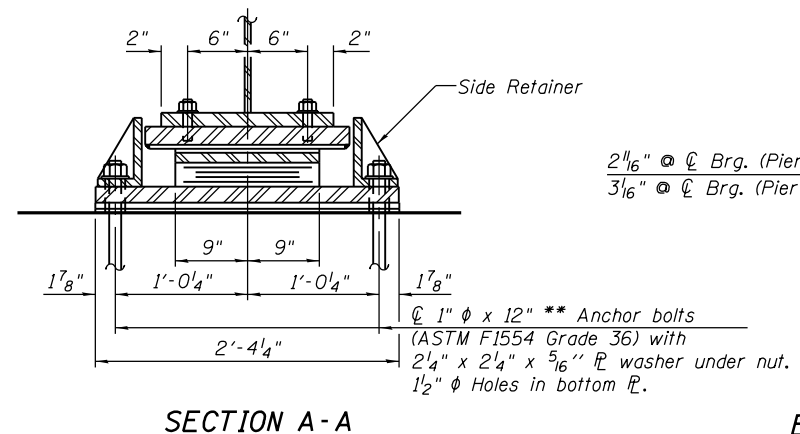
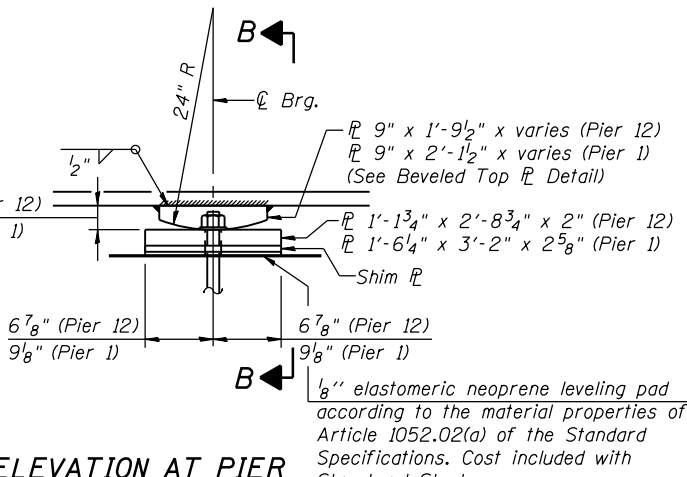


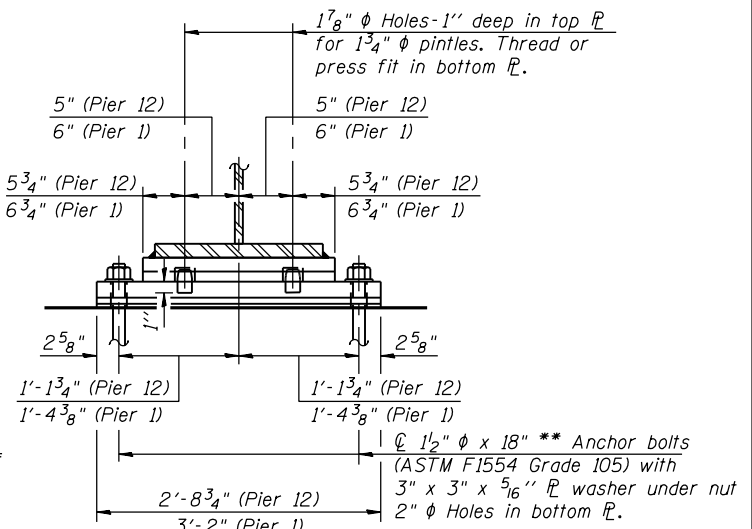
ELEVATION AT PIER 10-W



SECTION A-A



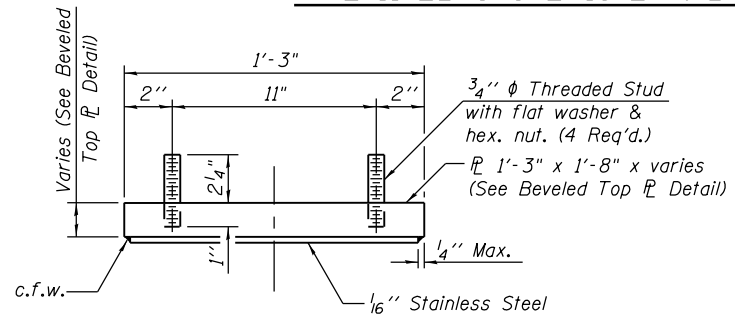
ELEVATION AT PIER



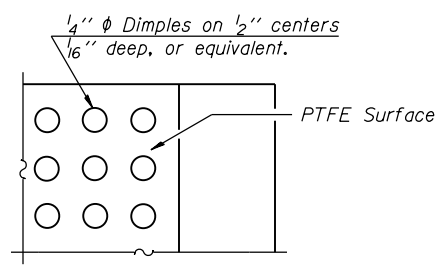
SECTION B-B

TYPE II ELASTOMERIC EXP. BRG. AT PIER 10-W

FIXED BEARING (Pier 1 and Pier 12)

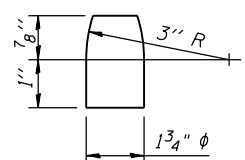


TOP BEARING ASSEMBLY

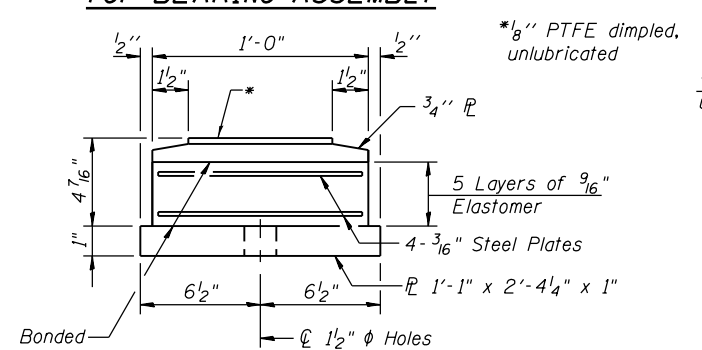


PLAN-PTFE SURFACE

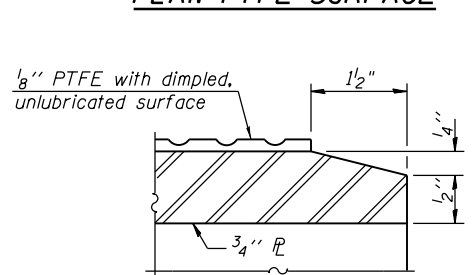
\*\*Length shown is minimum required embedment length.



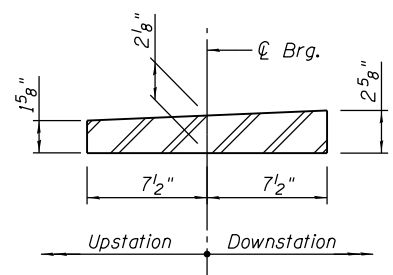
PINTLE



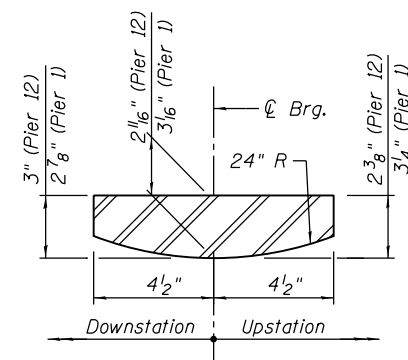
BOTTOM BEARING ASSEMBLY



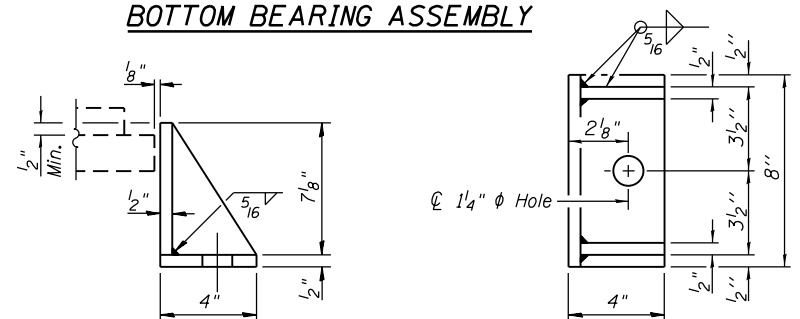
SECTION THRU PTFE



BEVELED TOP FLANGE DETAIL (Pier 10-W)

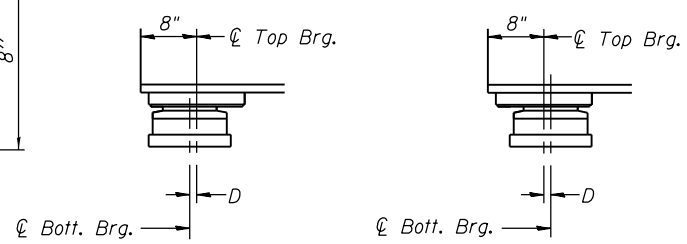


BEVELED TOP FLANGE DETAIL (Pier 1 and Pier 12)



SIDE RETAINER

Equivalent rolled angle with stiffeners will be allowed in lieu of welded plates.



SETTING ANCHOR BOLTS AT EXP. BRG. BELOW 50°F. ABOVE 50°F.

(Move bott. brg. away from fixed brg.) (Move bott. brg. toward fixed brg.)

SETTING ANCHOR BOLTS AT EXP. BRG.

D=1/8" per each 100' of expansion for every 15° temp. change from the normal temp. of 50°F.

BILL OF MATERIAL

Item	Unit	Total
Elastomeric Bearing Assembly, Type II	Each	6
Anchor Bolts, 1" phi	Each	12
Anchor Bolts, 1 1/2" phi	Each	24

NOTES:

- Anchor bolts shall be ASTM F1554 all-thread (or an Engineer-approved alternate material) of the grade(s) and diameter(s) specified. The corresponding specified grade of AASHTO M314 anchor bolts may be used in lieu of ASTM F1554.
- Anchor bolts at fixed bearings may be either cast in place or installed in holes drilled after the supported member is in place.
- Anchor bolts for Type II bearings shall be placed in holes drilled in the concrete through holes in the bottom bearing plate after members are in place. Side retainers shall be placed after bolts are installed.
- Drilled and set anchor bolts shall be installed according to Article 521.06 of the Standard Specifications.
- Side retainers and other steel members required for the elastomeric bearing assembly shall be included in the cost of Elastomeric Bearing Assembly, Type II.
- The 1/8" PTFE sheet shall be bonded directly to the top steel plate with a two-component, medium viscosity epoxy resin, conforming to the requirements of the Federal Specification MMM-A-134, Type I. The bond agent shall be applied on the full area of the contact surfaces.
- Bonding of 1/8" PTFE sheet during vulcanizing process will be permitted provided the process and method of adjusting assembly height is approved by the Engineer.
- Fixed Bearing included in "Furnishing and Erecting Structural Steel."
- The structural steel for fixed bearing and elastomeric bearing assembly shall conform to the requirements of AASHTO M270 Grade 50.
- Two 1/8" in. adjusting shims shall be provided for each bearing in addition to all other plates or shims and placed as shown on bearing details.
- All (embedded and separate) bearing plates, side retainers, anchor bolts, nuts, washers and pintles shall be galvanized according to AASHTO M111 or M232 as applicable.

0161705-60W28-5107-Bearing.dgn



USER NAME = floresg	DESIGNED - ABT	REVISIONS
PLOT SCALE = N.T.S.	CHECKED - EJO	REVISIONS
PLOT DATE = 5/7/2014	DRAWN - MRK	REVISIONS
	CHECKED - ABT	REVISIONS

STATE OF ILLINOIS  
DEPARTMENT OF TRANSPORTATION

ELASTOMERIC BEARING DETAILS II  
STRUCTURE NO. 016-1705

SHEET NO. S-107 OF S-165 SHEETS

F.A.I. R.T.E.	SECTION	COUNTY	TOTAL SHEETS	SHEET NO.
90/94/290	2013-010R	COOK	747	423
CONTRACT NO.			60W28	
ILLINOIS FED. AID PROJECT				