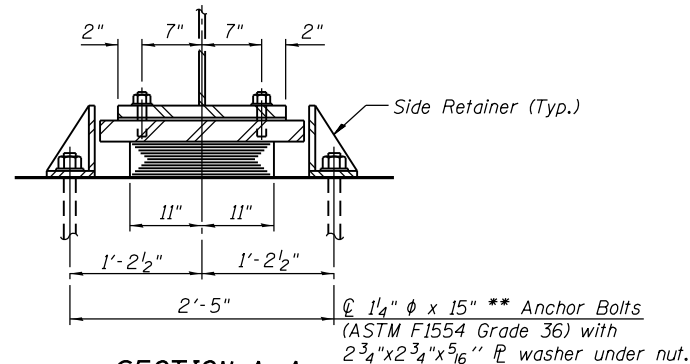
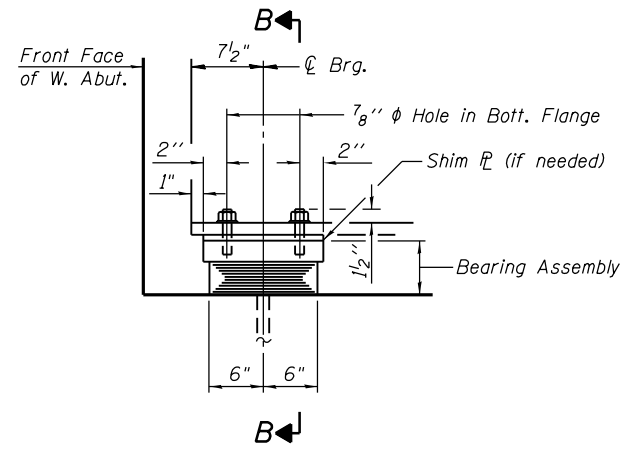


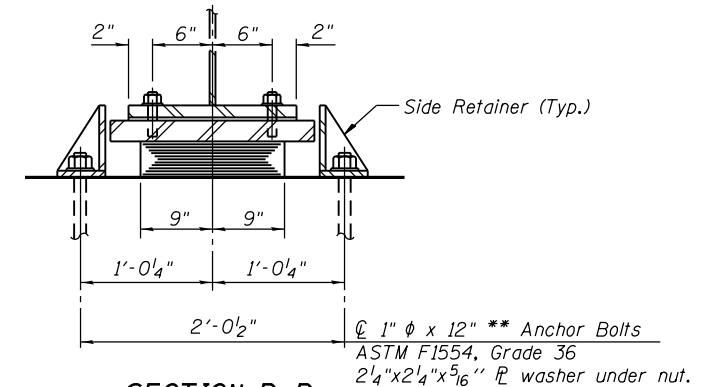
**ELEVATION AT S. ABUT.**  
(Pier 2-S similar)



**SECTION A-A**



**ELEVATION AT W. ABUT.**

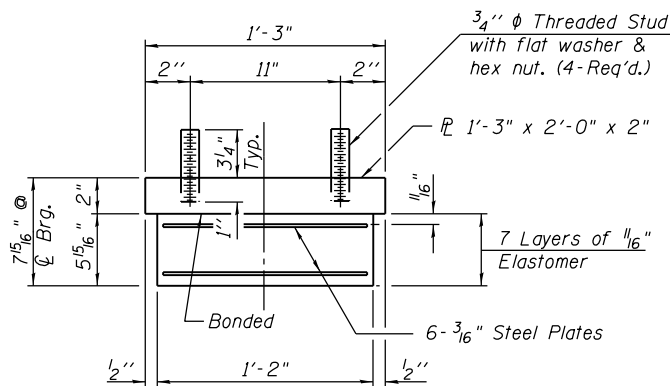


**SECTION B-B**

**TYPE I ELASTOMERIC EXP. BRG.**  
(S. Abut. and Pier 2-S)

\*\*Length shown is minimum required embedment length.

**TYPE I ELASTOMERIC EXP. BRG.**  
(W. Abut.)

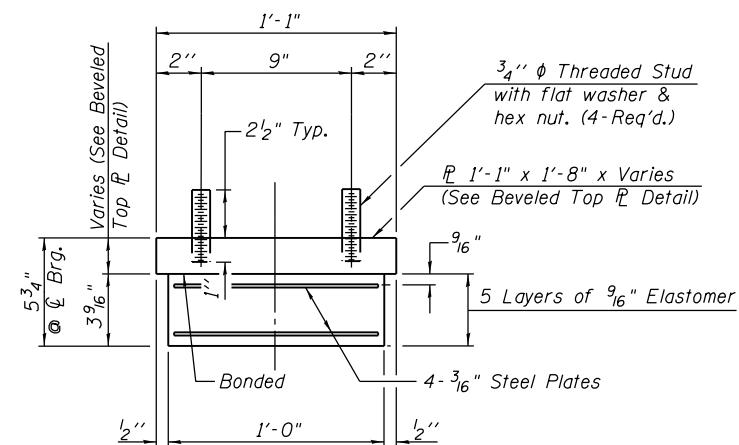


**BEARING ASSEMBLY**

Note:  
Shim PL's shall not be placed under Bearing Assembly.

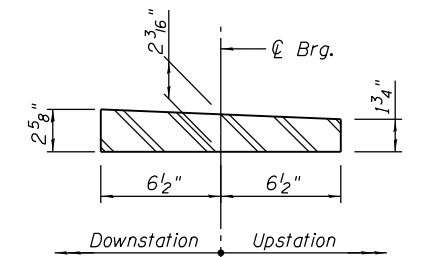
**SHIM PLATE THICKNESS**

Bearing Line 2-S, Girder 1	1/2"
Bearing Line 2-S, Girder 5	1/4"

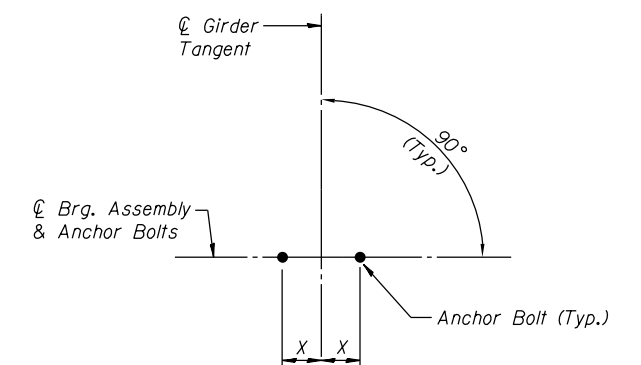


**BEARING ASSEMBLY**  
(W. Abut.)

Note:  
Shim PL's shall not be placed under Bearing Assembly.



**BEVELED TOP PL DETAIL**  
(W. Abut.)



**ANCHOR BOLT LAYOUT**

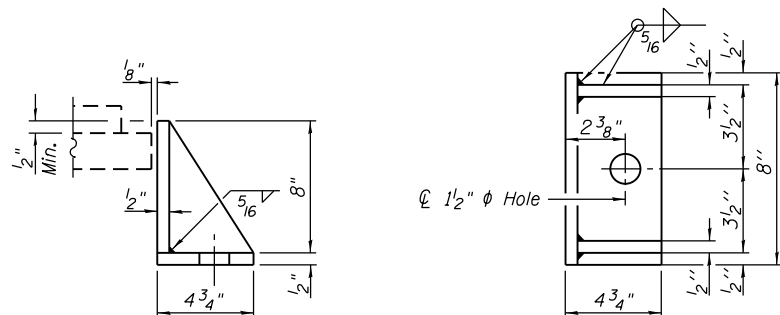
Location	X
S. Abut. & Pier 2-S	1'-2 1/4"
W. Abut. & Pier 10-W	11 7/8"
Pier 1	1'-4 3/8"
Pier 12	1'-1 3/4"

**BILL OF MATERIAL**

Item	Unit	Total
Elastomeric Bearing Assembly, Type I	Each	18
Anchor Bolts, 1"	Each	12
Anchor Bolts, 1 1/4"	Each	24

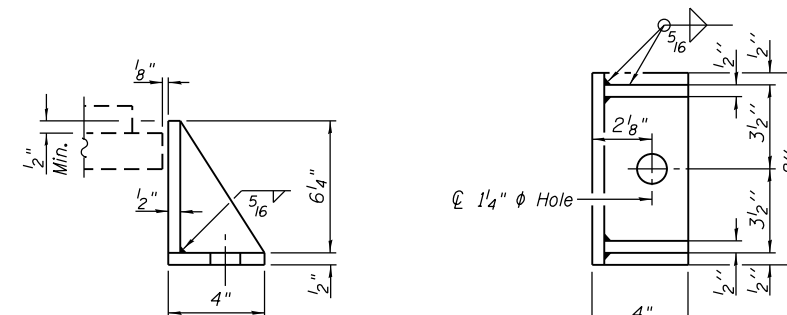
**NOTES:**

- Anchor bolts shall be ASTM F1554 all-thread (or an Engineer-approved alternate material) of the grade(s) and diameter(s) specified. The corresponding specified grade of AASHTO M314 anchor bolts may be used in lieu of ASTM F1554.
- Anchor bolts for side retainers may be cast in place or installed in holes drilled before or after members are in place.
- Drilled and set anchor bolts shall be installed according to Article 521.06 of the Standard Specifications.
- Side retainers and other steel members required for the elastomeric bearing assembly shall be included in the cost of Elastomeric Bearing Assembly, Type I.
- The structural steel plates of the Bearing Assembly shall conform to the requirements of AASHTO M 270 Grade 50.
- Two 1/8 in. adjusting shims shall be provided for each bearing in addition to all other plates or shims and placed as shown on bearing details.
- All (embedded and separate) bearing plates, side retainers, anchor bolts, nuts, washers and pintles shall be galvanized according to AASHTO M111 or M232 as applicable.



**SIDE RETAINER**

Equivalent rolled angle with stiffeners will be allowed in lieu of welded plates.



**SIDE RETAINER**  
(W. Abut.)

Equivalent rolled angle with stiffeners will be allowed in lieu of welded plates.

0161705-60W28-5106-Bearing.dgn



USER NAME = floresg	DESIGNED - ABT	REVISED
PLOT SCALE = N.T.S.	CHECKED - EJO	REVISED
PLOT DATE = 5/7/2014	DRAWN - MRK	REVISED
	CHECKED - ABT	REVISED

STATE OF ILLINOIS  
DEPARTMENT OF TRANSPORTATION

ELASTOMERIC BEARING DETAILS I  
STRUCTURE NO. 016-1705

SHEET NO. S-106 OF S-165 SHEETS

F.A.I. RTE.	SECTION	COUNTY	TOTAL SHEETS	SHEET NO.
90/94/290	2013-010R	COOK	747	422
CONTRACT NO.			60W28	
ILLINOIS FED. AID PROJECT				