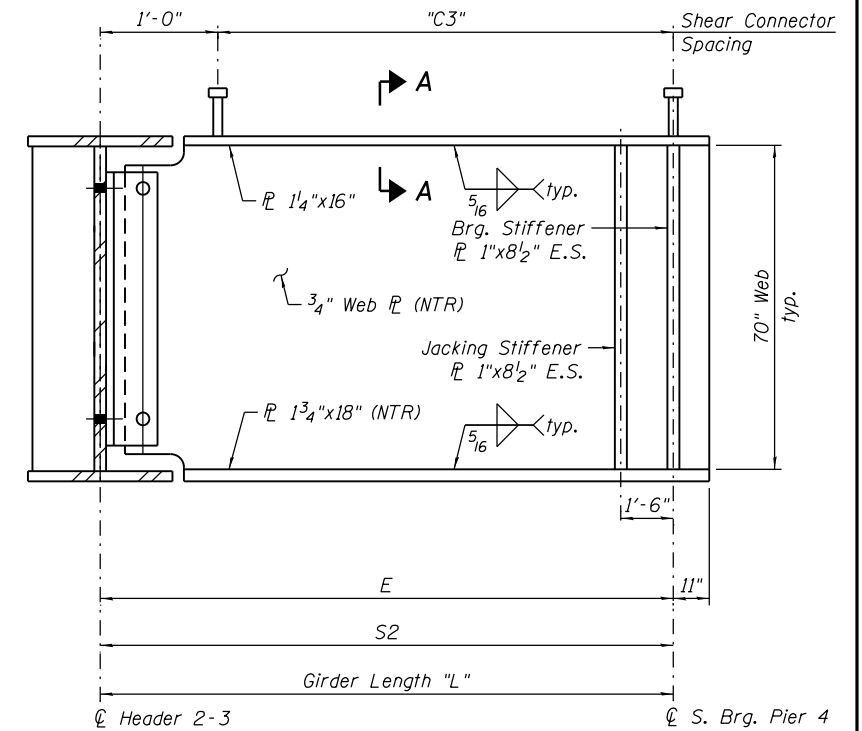


GIRDER ELEVATION (GIRDERS 1B, 4B thru 7B & 9B) - UNIT II
(Connection and Splice \bar{r} 's not shown for clarity)



GIRDER ELEVATION (GIRDER 2B) - UNIT II

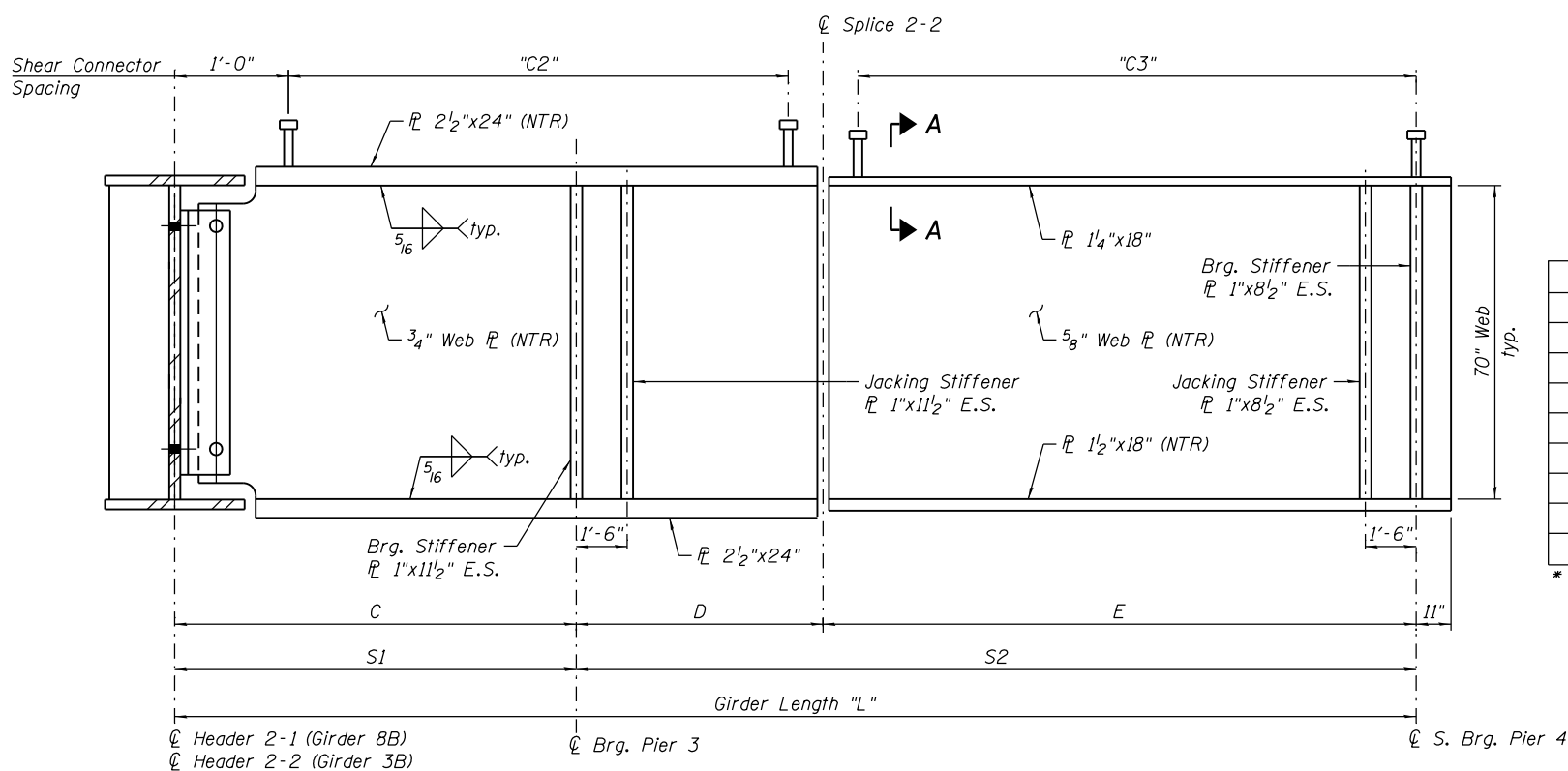
Note A

$\frac{5}{16}$ " ϕ hole for 19 - $\frac{7}{8}$ " ϕ bolts.
See sheet S-36 & S-58 for details of L4x3x $\frac{1}{2}$ bolted to Girder 1B & 9B only (near face and far face) for overhead sign truss support. Cost included in Furnishing and Erecting Structural Steel.

GIRDER DIMENSIONS - UNIT II
(All Dimensions in Feet)

Girder	L*	S1	S2	A	B	C	D	E	C1	C2	C3
1B	341.838	172.533	169.305	5.878	114.512	52.143	52.143	117.162	145 Spa at 10"	84 Spa at 15"	141 Spa at 10"
2B	104.971	-	104.971	-	-	-	-	104.971	-	-	210 Spa at 6"
3B	225.776	55.729	170.047	-	-	55.729	52.000	118.047	-	87 Spa at 15"	158 Spa at 9"
4B	342.675	172.053	170.622	5.856	114.197	52.000	52.000	118.622	160 Spa at 9"	104 Spa at 12"	159 Spa at 9"
5B	343.229	172.031	171.198	5.834	114.197	52.000	52.000	119.198	160 Spa at 9"	104 Spa at 12"	159 Spa at 9"
6B	343.781	172.008	171.773	5.811	114.197	52.000	52.000	119.773	160 Spa at 9"	104 Spa at 12"	160 Spa at 9"
7B	344.335	171.986	172.349	5.789	114.197	52.000	52.000	120.349	160 Spa at 9"	104 Spa at 12"	161 Spa at 9"
8B	228.526	55.729	172.797	-	-	55.729	52.000	120.797	-	87 Spa at 15"	162 Spa at 9"
9B	345.389	172.029	173.360	5.776	114.236	52.017	52.017	121.343	145 Spa at 10"	105 Spa at 12"	146 Spa at 10"

* Girder Length "L" excludes girder ends beyond first & last bearings.



GIRDER ELEVATION (GIRDERS 3B & 8B) - UNIT II
(Connection and Splice \bar{r} 's not shown for clarity)

NOTES:

- See Sheet S-77 for girder framing plan.
- See Sheet S-80 for camber & top of web elevations.
- See Sheets S-81 & S-82 for moment tables & reaction tables.
- See Sheet S-99 for girder bolted field splice details.
- See Sheets S-100 thru S-102 for girder cross frame details.
- All structural steel shall be AASHTO M270 Grade 50.
- Load carrying components designated "NTR" shall conform to the Impact Testing Requirement, Zone 2.
- See Sheet S-79 for Section A-A.

0161705-60W28-5078-GirderElev.dgn



USER NAME = floresg	DESIGNED - DD	REVISED
PLOT SCALE = N.T.S.	CHECKED - ATB	REVISED
PLOT DATE = 5/7/2014	DRAWN - MRK	REVISED
	CHECKED - DD	REVISED

STATE OF ILLINOIS
DEPARTMENT OF TRANSPORTATION

GIRDER ELEVATIONS 1 - UNIT II
STRUCTURE NO. 016-1705

SHEET NO. S-78 OF S-165 SHEETS

F.A.I. RTE.	SECTION	COUNTY	TOTAL SHEETS	SHEET NO.
90/94/290	2013-010R	COOK	747	394
CONTRACT NO.			60W28	
ILLINOIS FED. AID PROJECT				