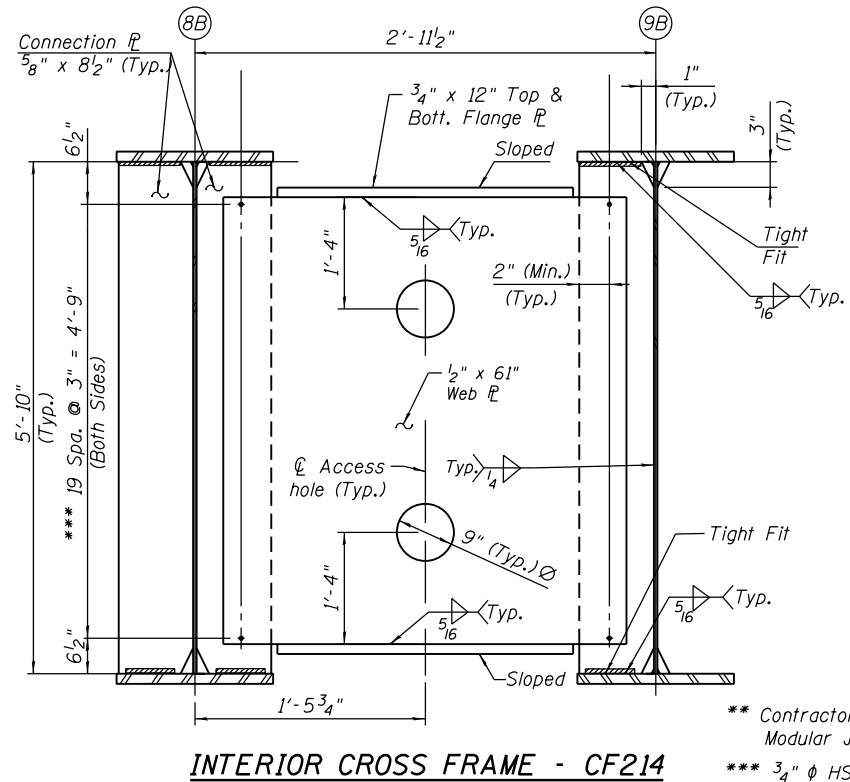
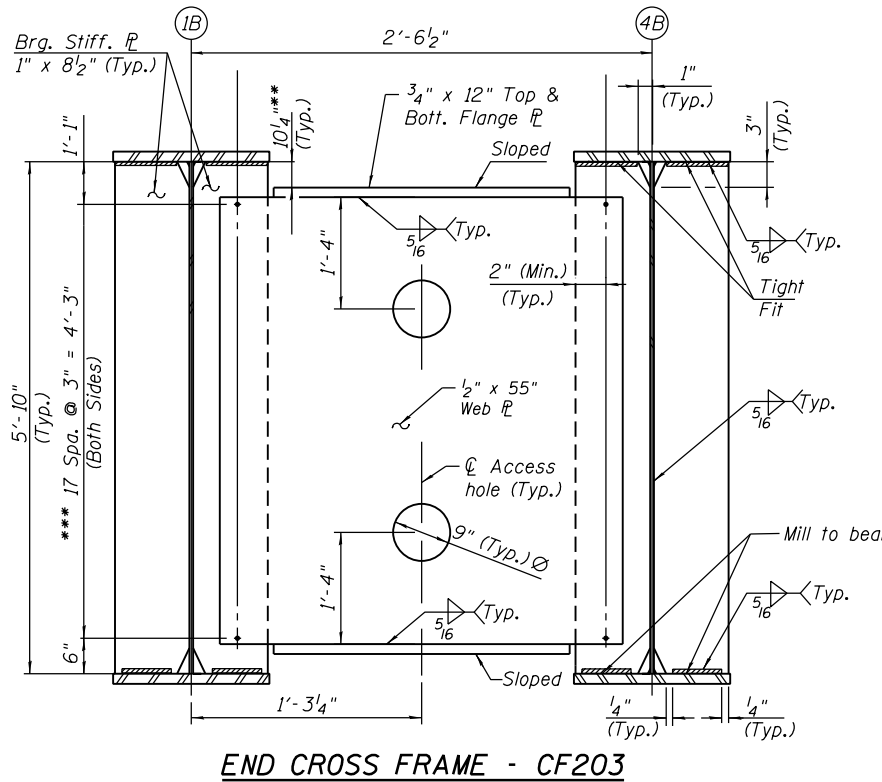


**GIRDER FRAMING PLAN - UNIT II**



**NOTE A:**

Header girders 2-1, 2-2 & 2-3 shall be treated as System Redundant Member (SRM) and shall be fabricated as per AWS Chapter 12.

**NOTES:**

- See Sheets S-78 & S-79 for girder elevation.
- See Sheet S-80 for camber & top of web elevations.
- See Sheets S-81 & S-82 for moment tables & reaction tables.
- See Sheet S-99 for girder bolted field splice details.
- See Sheets S-100 thru S-102 for girder cross frame details.
- Girder spacings and cross frame orientations are perpendicular to the  $\bar{R}$  Ramp NW, except at  $\bar{C}$  N. Brg. Pier 2 &  $\bar{C}$  S. Brg. Pier 4 supports where  $\bar{C}$  Brg. and cross frame orientations are parallel to the respective centerline of supports.

\*\* Contractor to coordinate with Modular Jt. Manufacturer

\*\*\* 3/4"  $\bar{\phi}$  HS bolts, 1 5/16"  $\bar{\phi}$  holes with two hardened washers

0161705-60W28-5077-FramePlan.dgn



USER NAME = floresg	DESIGNED - DD	REVISED
PLOT SCALE = N.T.S.	CHECKED - ATB	REVISED
PLOT DATE = 5/7/2014	DRAWN - MRK	REVISED
	CHECKED - DD	REVISED

**STATE OF ILLINOIS  
DEPARTMENT OF TRANSPORTATION**

**GIRDER FRAMING PLAN - UNIT II  
STRUCTURE NO. 016-1705**

SHEET NO. S-77 OF S-165 SHEETS

F.A.I. RTE. 90/94/290	SECTION 2013-01OR	COUNTY COOK	TOTAL SHEETS 747	SHEET NO. 393
CONTRACT NO. 60W28				
ILLINOIS FED. AID PROJECT				