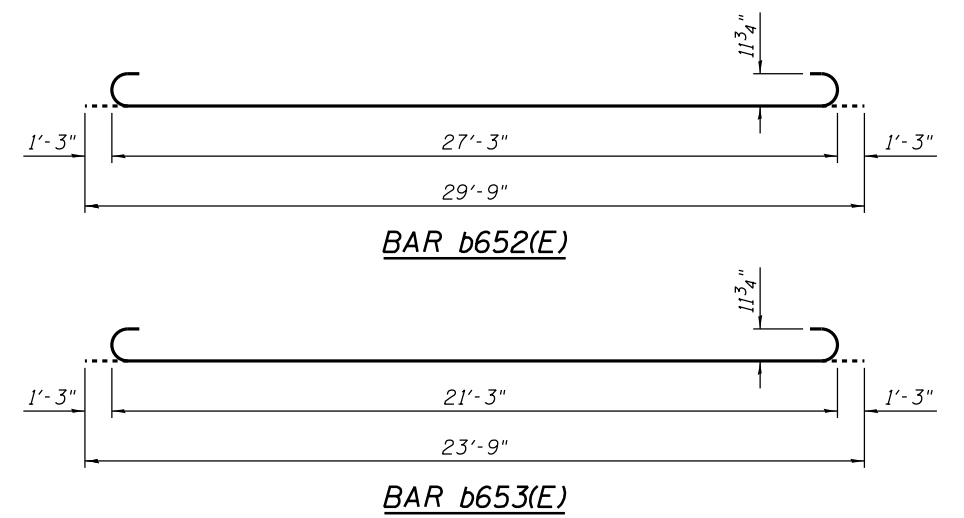
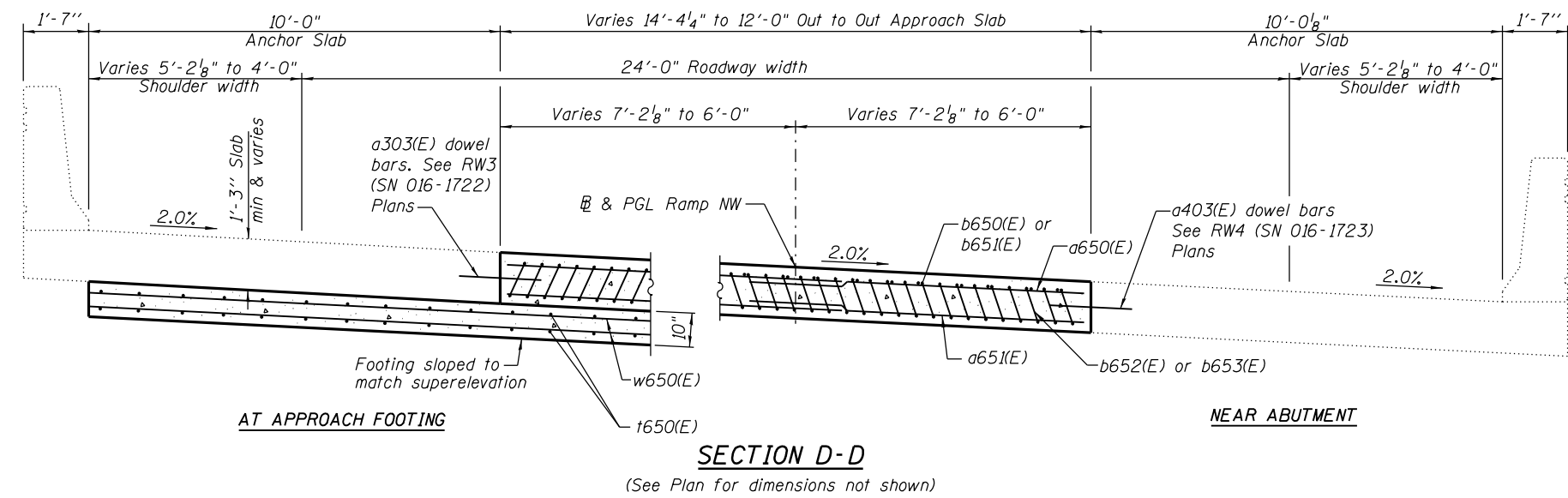


**NOTES:**

1. See sheet S-62 for Detail A.
2. Approach slab concrete shall be paid for as Concrete Superstructure.
3. Approach footing concrete shall be paid for as Concrete Structures.
4. Reinforcement shall be paid for as Reinforcement Bars, Epoxy Coated.
5. For v20(E) bar details, see sheet S-117.
6. The approach footing maximum applied service bearing pressure ( $Q_{max}$ ) = 2.0 ksf.
7. Cost of excavation for approach footing included with Concrete Structures.
8. For bar splicer details, see sheet S-146.
9. For lightweight fill details, see Retaining Wall 3 (SN 016-1722), sheet RW3-05.
10. For Anchor Slab Details see Retaining Wall 3 (SN 016-1722) and Retaining Wall 4 (SN 016-1723) plans.

\* Tilt #9 b652(E) or b653(E) bars as required to maintain clearance.  
 \*\*\* Cost included with Concrete Superstructure.



**BILL OF MATERIAL**

Bar	No.	Size	Length	Shape
a650(E)	50	#4	8'-4"	—
a651(E)	92	#5	8'-8"	—
b650(E)	11	#4	29'-8"	—
b651(E)	2	#4	21'-3"	—
b652(E)	29	#9	29'-9"	⌋
b653(E)	6	#9	23'-9"	⌋
t650(E)	66	#4	9'-8"	—
w650(E)	40	#5	31'-8"	—
Concrete Superstructure			Cu. Yd.	19
Concrete Structures			Cu. Yd.	10
Reinforcement Bars, Epoxy Coated			Pound	6,530
Bridge Deck Grooving (Special)			Sq. Yd.	43
Protective Coat			Sq. Yd.	43

0161705-60W28-5063-Appr Slab Details.dgn



USER NAME = floresg	DESIGNED - JRE	REVISED
PLOT SCALE = N.T.S.	CHECKED - JPH	REVISED
PLOT DATE = 5/7/2014	DRAWN - TNP	REVISED
	CHECKED - EJO	REVISED

**STATE OF ILLINOIS  
DEPARTMENT OF TRANSPORTATION**

**WEST APPROACH SLAB DETAILS  
STRUCTURE NO. 016-1705**

F.A.I. RTE. 90/94/290	SECTION 2013-010R	COUNTY COOK	TOTAL SHEETS 747	SHEET NO. 379
CONTRACT NO. 60W28			ILLINOIS FED. AID PROJECT	

SHEET NO. S-63 OF S-165 SHEETS