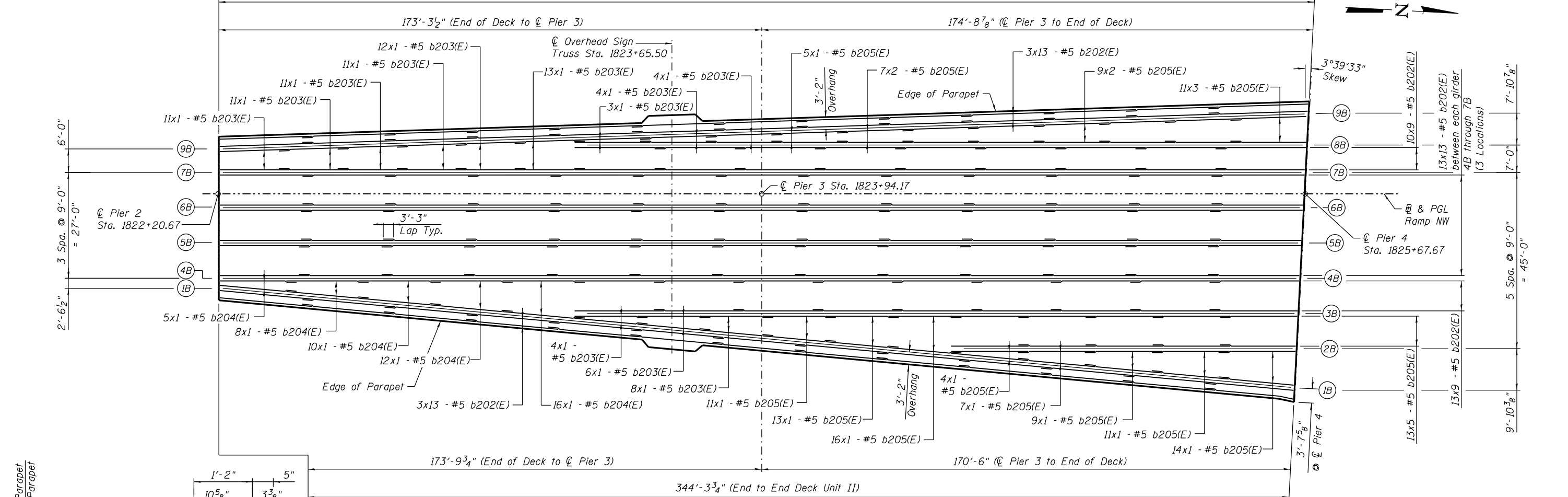
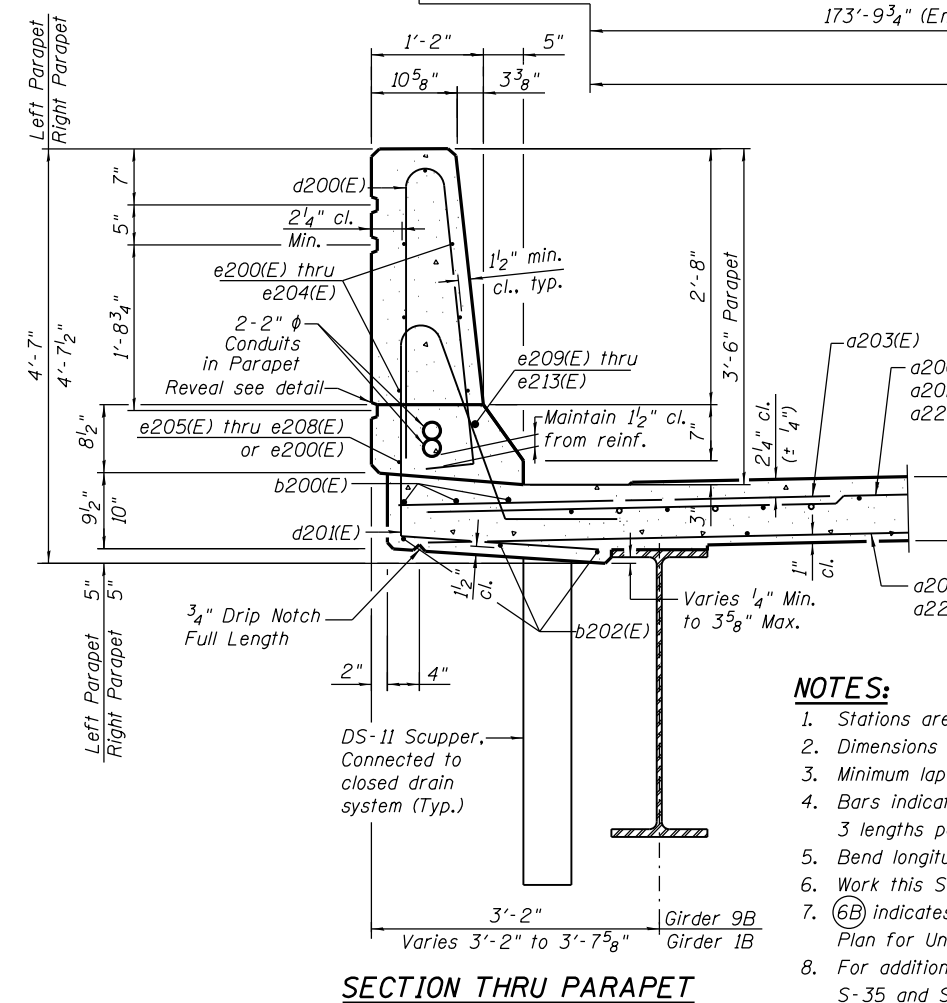


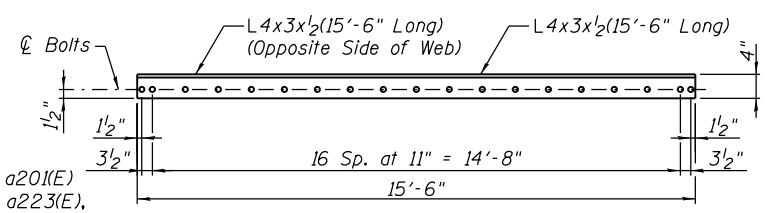
348'-0<sup>3</sup>/<sub>8</sub>" (End to End Deck Unit II)



**DECK PLAN III - UNIT II  
BOTTOM LONGITUDINAL REINFORCEMENT**



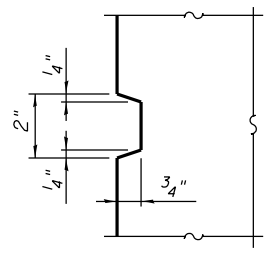
**SECTION THRU PARAPET**



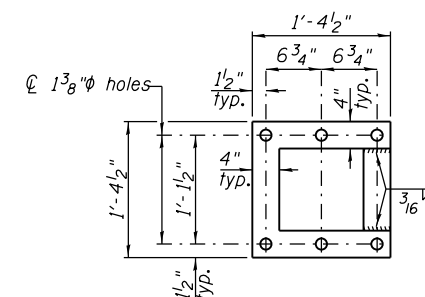
**L4x3x1/2" DETAIL - LEFT AND RIGHT PARAPET**

2 Angles and 19 Bolts Required each Parapet  
Cost included in Concrete Superstructure

**Note:**  
Fasteners shall be AASHTO M164 Type 1 mechanically galvanized bolts. Bolts 7/8" φ, holes 15/16" φ, unless noted otherwise.

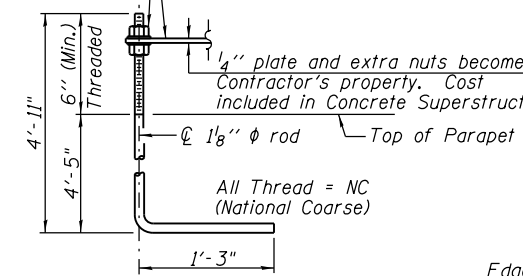


**REVEAL DETAIL**



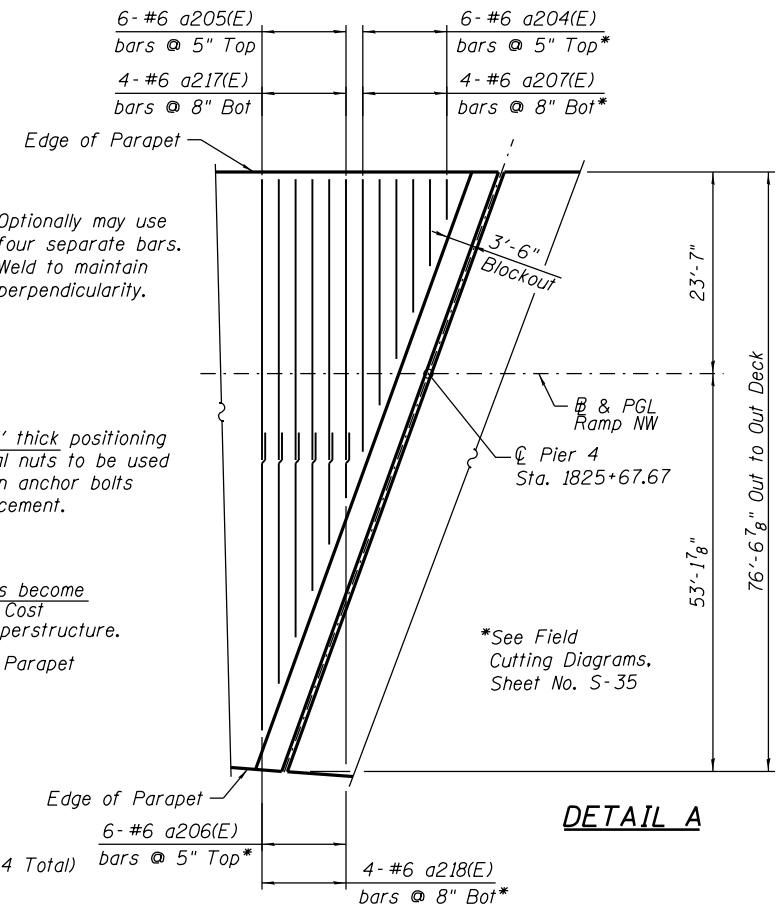
**POSITIONING PLATE(S)**

At each location, provide 1/4" thick positioning plate(s) and six (6) additional nuts to be used with leveling nuts to maintain anchor bolts position during concrete placement.



**ANCHOR ROD DETAIL**

Cost included in Concrete Superstructure (24 Total)  
(ASTM F 1554 Grade 105)  
Full length hot dipped galvanized



**DETAIL A**

**NOTES:**

1. Stations are along B & PGL Ramp NW unless noted otherwise.
2. Dimensions radial from B & PGL Ramp NW unless noted otherwise.
3. Minimum lap for #5 bars shall be 3'-3".
4. Bars indicated thus: 34x3-#6 etc. indicates 34 lines of bars with 3 lengths per line.
5. Bend longitudinal reinforcement bars as required to fit in the field.
6. Work this Sheet with Sheet Nos. S-34, S-35, S-52, S-53, S-58.
7. (6B) indicates girder designations. See Deck Cross Sections and Framing Plan for Unit II.
8. For additional parapet details at overhead sign truss see Sheets S-34, S-35 and S-58.



USER NAME = floresg	DESIGNED = JPH	REVISED
PLOT SCALE = N.T.S.	CHECKED = JRE	REVISED
PLOT DATE = 5/7/2014	DRAWN = TNP	REVISED
	CHECKED = EJO	REVISED

**STATE OF ILLINOIS  
DEPARTMENT OF TRANSPORTATION**

**DECK PLAN III - UNIT II  
STRUCTURE NO. 016-1705**

SHEET NO. S-36 OF S-165 SHEETS

F.A.I. RTE. 90/94/290	SECTION 2013-010R	COUNTY COOK	TOTAL SHEETS 747	SHEET NO. 352
CONTRACT NO. 60W28			ILLINOIS FED. AID PROJECT	

0161705-60W28-S36-Deck.dgn