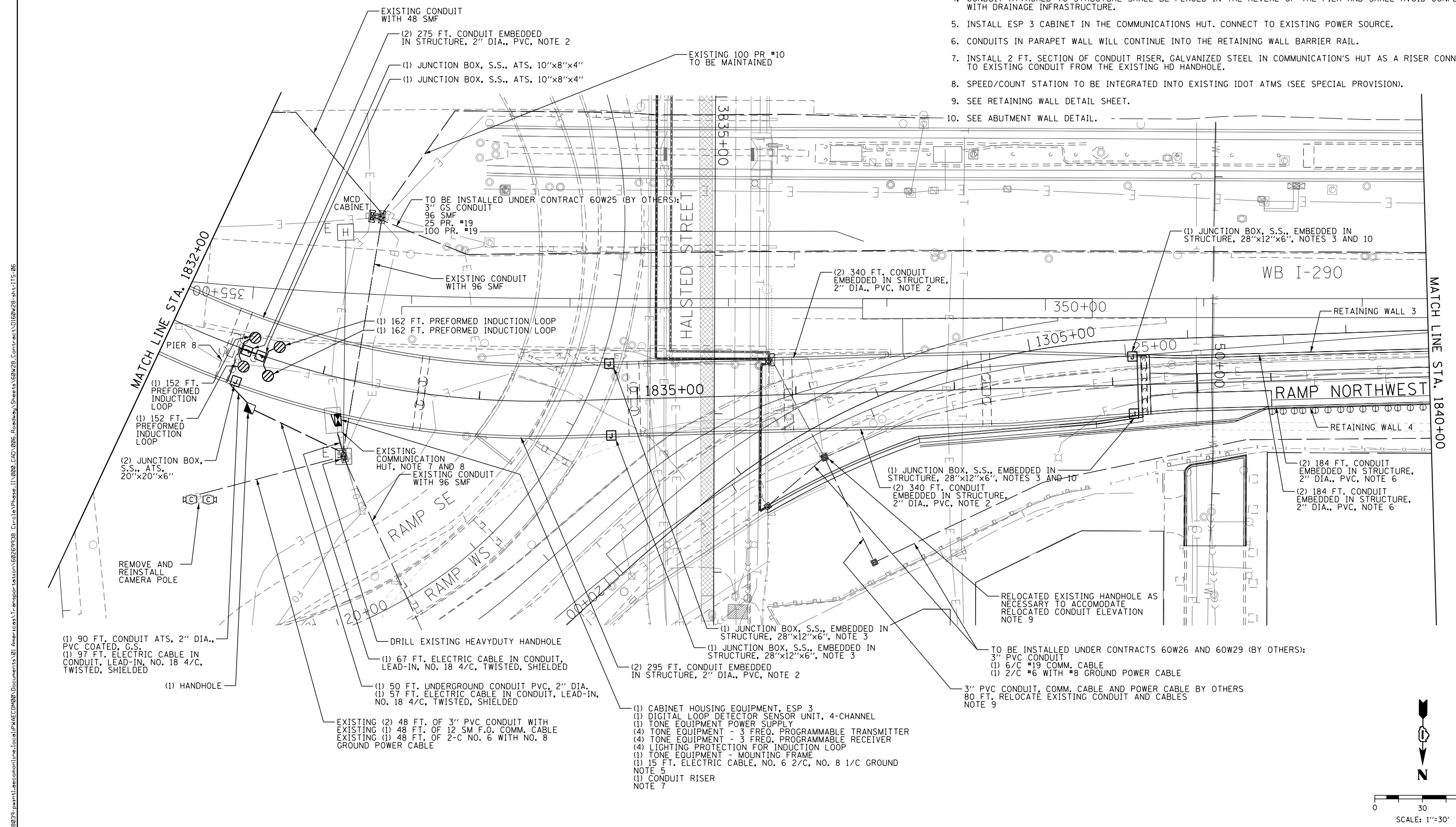


NOTES:

1. MAINTAIN THE EXISTING IDOT DETECTION SYSTEMS (ITS) AFFECTED BY THE NW FLYOVER CONSTRUCTION. THIS WORK SHALL BE INCLUDED IN THE COST OF THE 'MAINTAINING ITS DURING CONSTRUCTION' PAY ITEM. SEE THE 'OPERATION OF EXISTING TRAFFIC SURVEILLANCE/SPEED/COUNT STATIONS' SPECIAL PROVISION FOR MORE DETAILS.
2. TWO 2" DIAMETER CONDUITS TO BE INSTALLED IN THE PARAPET WALL ON EACH SIDE OF THE STRUCTURE.
3. JUNCTION BOX INSTALLED IN PARAPET WALLS.
4. CONDUIT ATTACHED TO STRUCTURE SHALL BE PLACED IN THE REVEAL OF THE PIER AND SHALL AVOID CONFLICT WITH DRAINAGE INFRASTRUCTURE.
5. INSTALL ESP 3 CABINET IN THE COMMUNICATIONS HUT. CONNECT TO EXISTING POWER SOURCE.
6. CONDUITS IN PARAPET WALL WILL CONTINUE INTO THE RETAINING WALL BARRIER RAIL.
7. INSTALL 2 FT. SECTION OF CONDUIT RISER, GALVANIZED STEEL IN COMMUNICATION'S HUT AS A RISER CONNECTED TO EXISTING CONDUIT FROM THE EXISTING HD HANDHOLE.
8. SPEED/COUNT STATION TO BE INTEGRATED INTO EXISTING IDOT ATMS (SEE SPECIAL PROVISION).
9. SEE RETAINING WALL DETAIL SHEET.
10. SEE ABUTMENT WALL DETAIL.



FILE PATH = p:\388035\pmt\lecomonline\local\p\AECOM\Documents\01_Americas\Transportation\62629938_Circle\Phase_1\1000_CAD\005_Roadway_Sheets\60W28-sht-ITS-06



D160W28-sht-ITS-06
 USER NAME = myersc
 PLOT SCALE = 30.0000' / 1" in.
 PLOT DATE = 4/24/2014

DESIGNED - GWS	REVISED -
DRAWN - CAM	REVISED -
CHECKED - JDG	REVISED -
DATE - 04/28/14	REVISED -

**STATE OF ILLINOIS
 DEPARTMENT OF TRANSPORTATION**

**PROPOSED ITS PLAN
 RAMP NORTHWEST**

SCALE: 1"=30' SHEET 6 OF 9 SHEETS STA. 1832+00 TO STA. 1840+00

F.A.I. RTE.	SECTION	COUNTY	TOTAL SHEETS	SHEET NO.
90/94/290	2013-010R	COOK	747	313
CONTRACT NO. 60W28				
ILLINOIS FED. AID PROJECT				