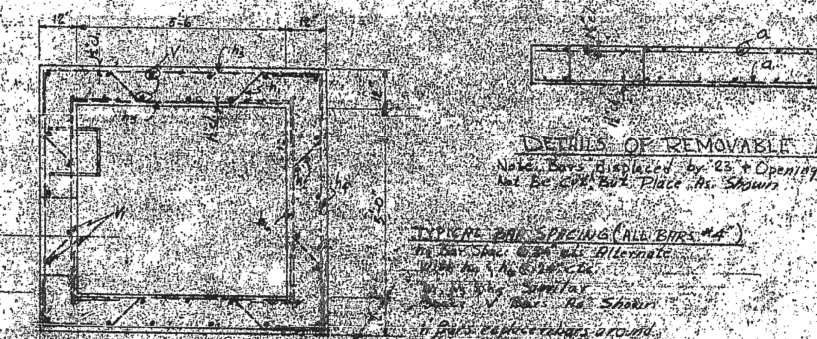
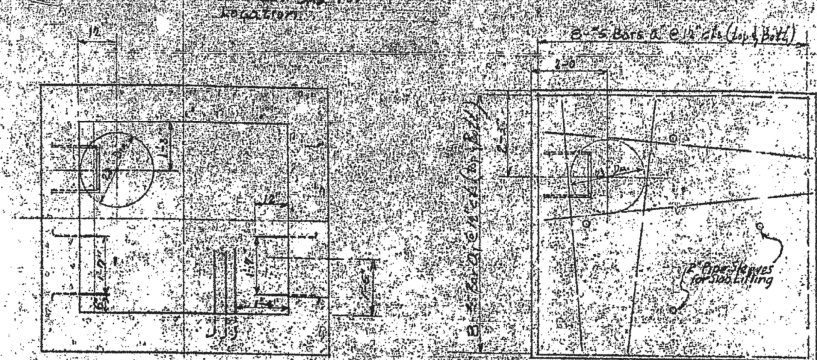
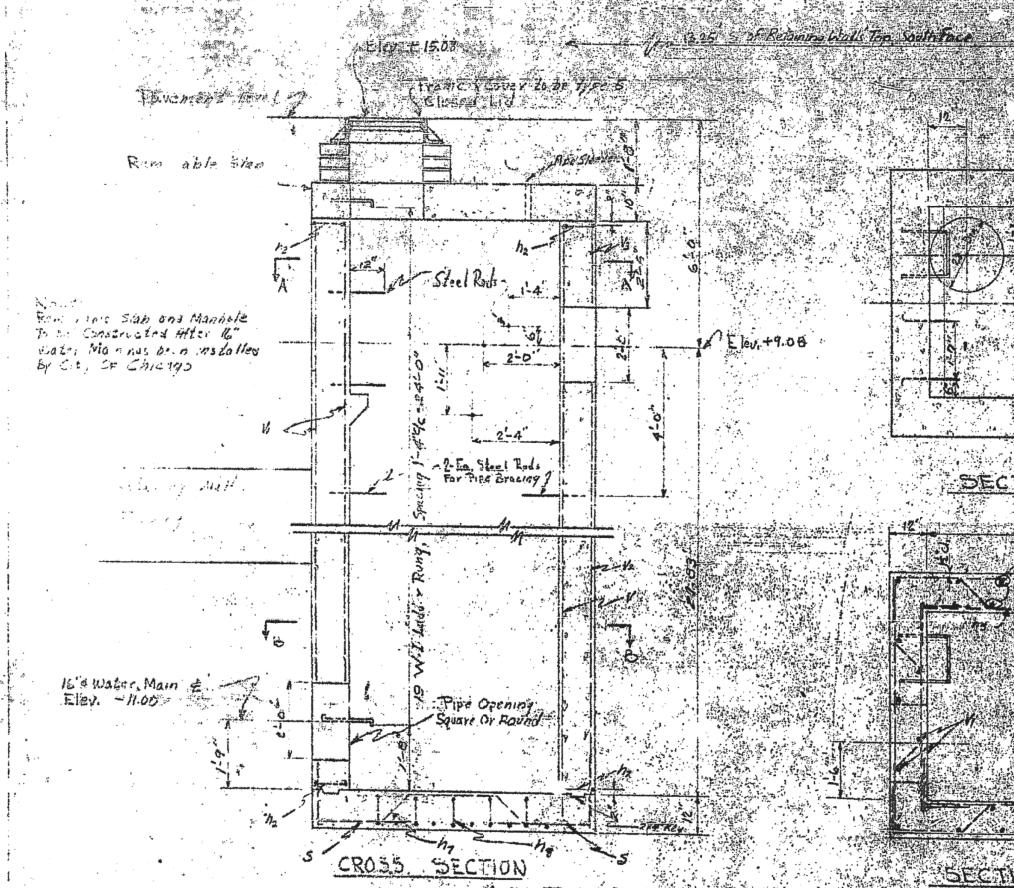
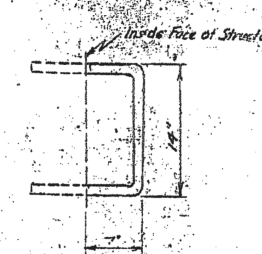


DATE	DESCRIPTION	BY
11/17/94	CONCRETE	J
12/15/94	TO STA.	J
01/15/95	REVISION	J



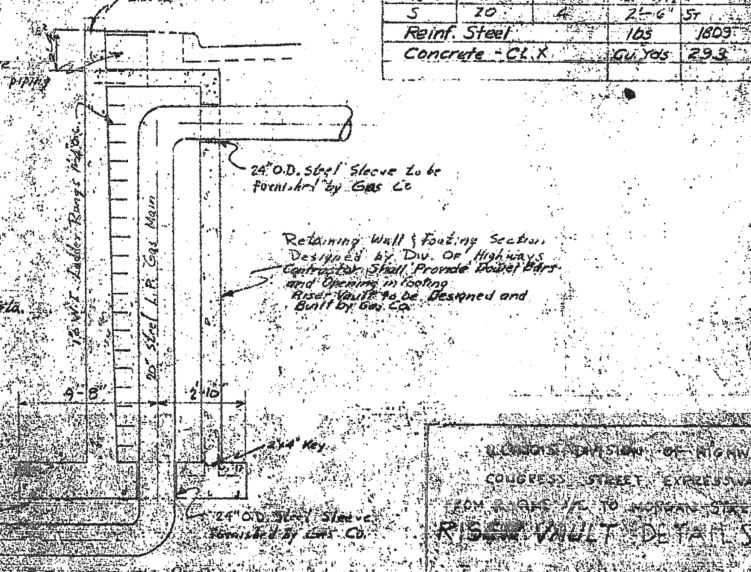
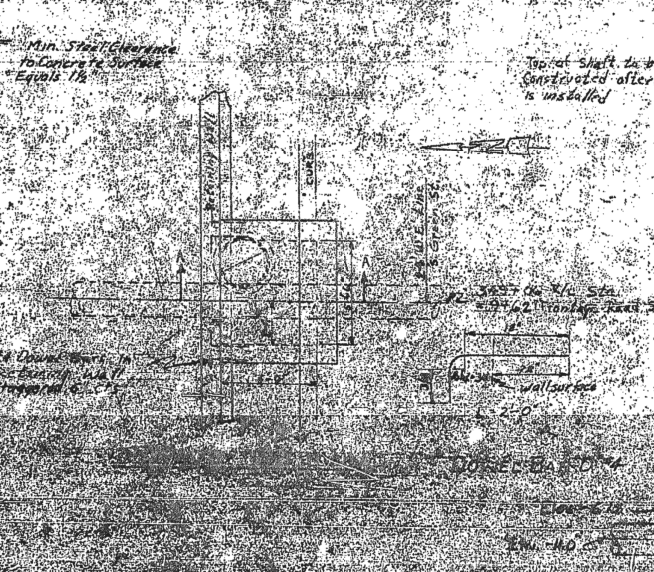
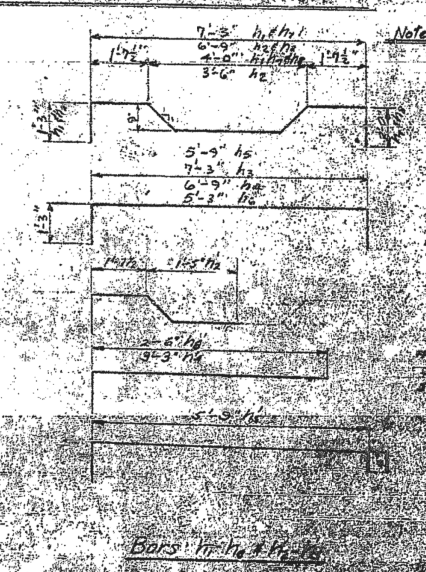
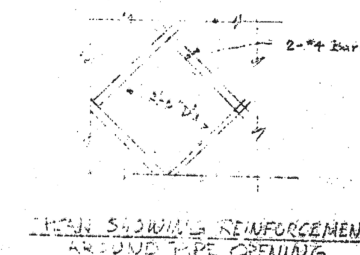
1" ROUND WROUGHT IRON STEPS



Wrought Iron Steps Shall Conform to the Requirements of Section 104.02 of the Standard Specifications. The Cost of the Steps Will be Incident to the Cost of the "CONCRETE"

Bar	No.	Size	Length	Weight
Q	18	5/8"	25'-0"	54
Q	16	5/8"	17'-0"	54
H	26	3/4"	10'-0"	57
H	24	3/4"	11'-0"	57
H	22	3/4"	12'-0"	57
H	20	3/4"	13'-0"	57
H	18	3/4"	14'-0"	57
H	16	3/4"	15'-0"	57
V	28	3/4"	24'-0"	57
V	2	3/4"	22'-0"	57
V	2	3/4"	21'-0"	57
V	2	3/4"	20'-0"	57
V	2	3/4"	19'-0"	57
V	2	3/4"	18'-0"	57
V	2	3/4"	17'-0"	57
V	2	3/4"	16'-0"	57
V	2	3/4"	15'-0"	57
V	2	3/4"	14'-0"	57
V	2	3/4"	13'-0"	57
V	2	3/4"	12'-0"	57
V	2	3/4"	11'-0"	57
V	2	3/4"	10'-0"	57
V	2	3/4"	9'-0"	57
V	2	3/4"	8'-0"	57
V	2	3/4"	7'-0"	57
V	2	3/4"	6'-0"	57
V	2	3/4"	5'-0"	57
V	2	3/4"	4'-0"	57
V	2	3/4"	3'-0"	57
V	2	3/4"	2'-0"	57
V	2	3/4"	1'-0"	57
V	2	3/4"	0'-0"	57
Reinf. Steel			105	1803
Concrete - CLX			64.765	29.3

PLAN SECTION AND DETAILS FOR 16" WATER MAIN RISER VAULT



ILLINOIS DEPARTMENT OF HIGHWAYS
CONGRESS STREET - GREENWAY
FROM 31st ST. TO MORGAN STREET
RISER VAULT DETAILS

FILE PATH = p:\388031\pmt\escomonline\local\p\w\ecdm\0\Documents\01_Americas\Transportation\62629938_Circle\Phase 1\1000_CAD\005_Roadway_Sheets\60W28-sht-WM-11.dgn



D160W28-sht-WM-11.dgn
USER NAME = CooperM2
PLOT SCALE = 20.0000' / 1"
PLOT DATE = 3/24/2014

DESIGNED - HHC
DRAWN - HHC
CHECKED - RBB
DATE - 03/28/14

STATE OF ILLINOIS
DEPARTMENT OF TRANSPORTATION

WATER MAIN RELOCATION
EXISTING INFORMATION

F.A.I. RTE.	SECTION	COUNTY	TOTAL SHEETS	SHEET NO.
90/94/290	2013-010R	COOK	747	248
CONTRACT NO. 60W28				
ILLINOIS FED. AID PROJECT				

FOR INFORMATION ONLY