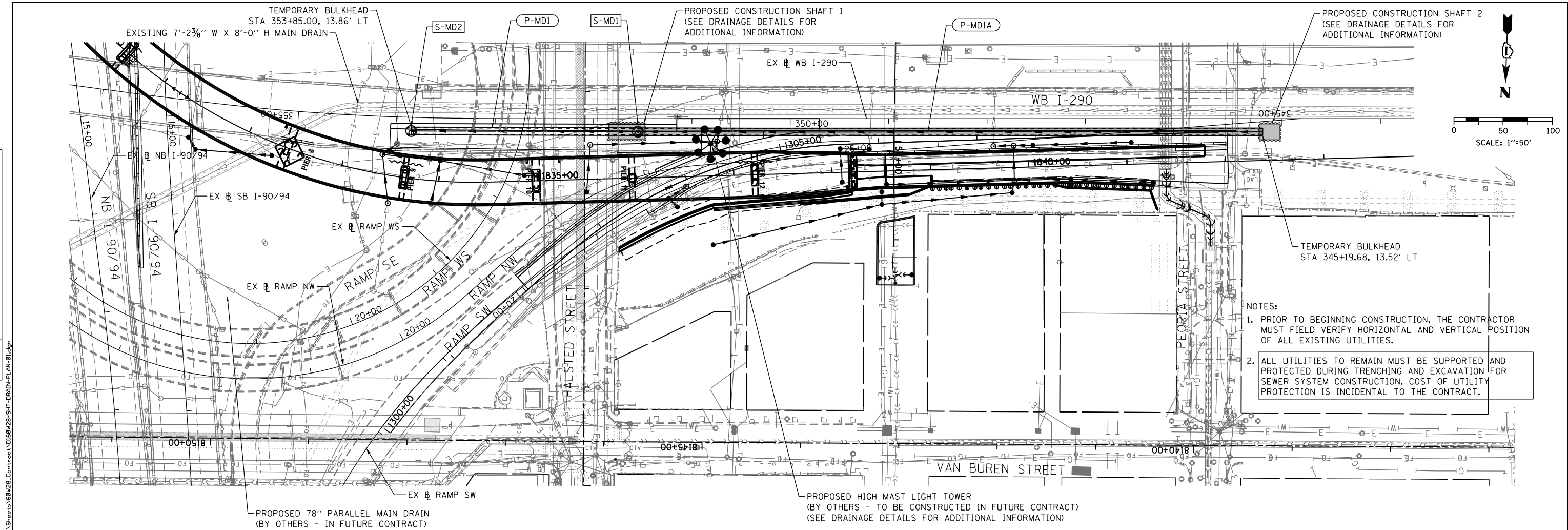
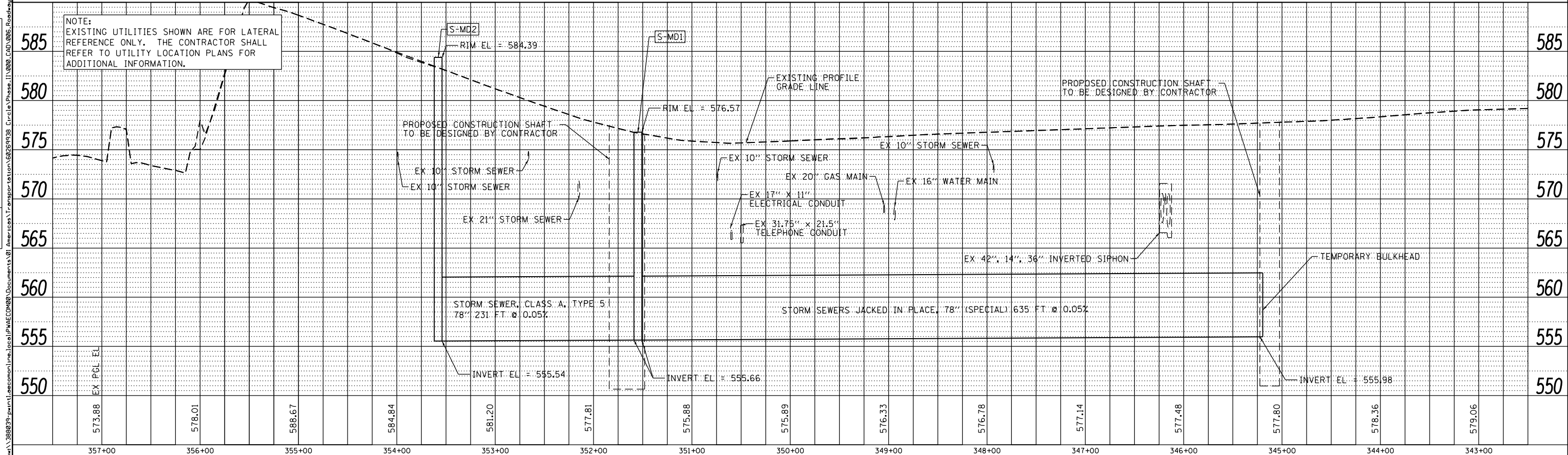


DATE	
BY	
PLAN	SURVEYED
	PLOTTED
	ALIGNED
	CHECKED
	REVISION
	NO.
	NO.
	NO.
	NO.
	NO.
	NO.

DATE	
BY	
PROFILE	SURVEYED
	PLOTTED
	GRADES
	CHECKED
	STRUCTURE
	NOTATIONS
	CHKD
	NO.
	NO.
	NO.
	NO.
	NO.
	NO.



- NOTES:
1. PRIOR TO BEGINNING CONSTRUCTION, THE CONTRACTOR MUST FIELD VERIFY HORIZONTAL AND VERTICAL POSITION OF ALL EXISTING UTILITIES.
 2. ALL UTILITIES TO REMAIN MUST BE SUPPORTED AND PROTECTED DURING TRENCHING AND EXCAVATION FOR SEWER SYSTEM CONSTRUCTION. COST OF UTILITY PROTECTION IS INCIDENTAL TO THE CONTRACT.



AECOM 303 EAST WACKER DRIVE, SUITE 1400 CHICAGO, IL 60601-5276 PHONE: (312) 373-7700 FAX: (312) 373-6800	D160W28-SHT-DRAIN-PLAN-01.dgn	DESIGNED - DMS	REVISED -	STATE OF ILLINOIS DEPARTMENT OF TRANSPORTATION	DRAINAGE AND UTILITY PLAN AND PROFILE 78" MAIN DRAIN AT WB I-290			F.A.I. R.E.	SECTION	COUNTY	TOTAL SHEETS	SHEET NO.
	USER NAME = chiuw	DRAWN - DMS	REVISED -		90/94/290	2013-010R	COOK	747	231			
PLOT SCALE = 100.0000' / in.	CHECKED - EEY	REVISED -		SCALE: 1"=50'			SHEET 1 OF 1 SHEETS			CONTRACT NO. 60W28		
PLOT DATE = 4/28/2014	DATE - 04/28/14	REVISED -		STA. TO STA.			ILLINOIS FED. AID PROJECT					