

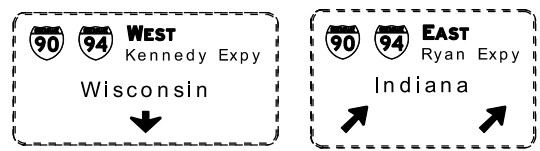
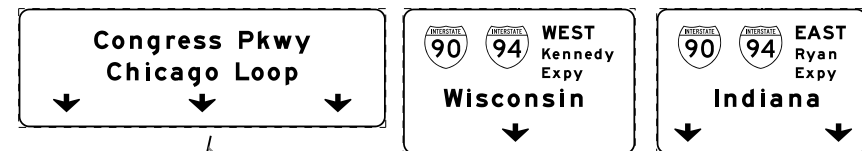
OH4 EXISTING OVERHEAD SIGNS TO REMAIN  
SEE CONTRACT 60W26 FOR SIGN DETAIL

OH5 EXISTING OVERHEAD SIGNS TO REMAIN  
SEE CONTRACT 60W26 FOR SIGN DETAIL

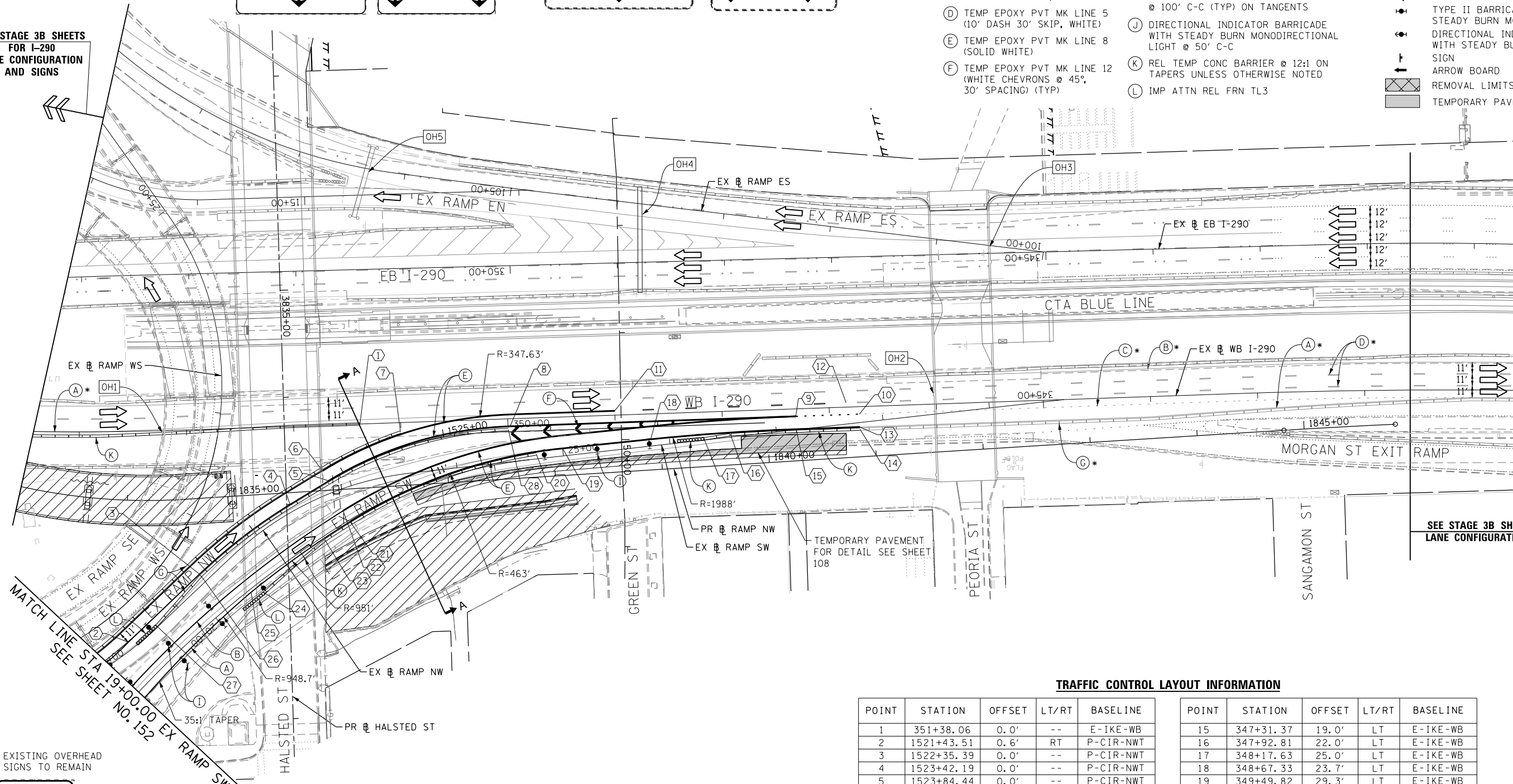
**PROPOSED TEMP PAVEMENT MARKINGS  
AND TRAFFIC CONTROL DEVICES**

- (A) TEMP EPOXY PVT MK LINE 4 (SOLID WHITE)
- (B) TEMP EPOXY PVT MK LINE 4 (SOLID YELLOW)
- (C) TEMP EPOXY PVT MK LINE 4 (2' DASH 6' SKIP, WHITE)
- (D) TEMP EPOXY PVT MK LINE 5 (10' DASH 30' SKIP, WHITE)
- (E) TEMP EPOXY PVT MK LINE 8 (SOLID WHITE)
- (F) TEMP EPOXY PVT MK LINE 12 (WHITE CHEVRONS @ 45°, 30' SPACING) (TYP)
- (G) TEMP CONC BARRIER @ 12:1 ON TAPERS UNLESS OTHERWISE NOTED
- (H) IMP ATTN TEMP FRN TL3
- (I) TYPE II BARRICADE OR DRUMS WITH STEADY BURN MONODIRECTIONAL LIGHT @ 50' C-C (TYP) ON TAPERS AND RAMP @ 100' C-C (TYP) ON TANGENTS
- (J) DIRECTIONAL INDICATOR BARRICADE WITH STEADY BURN MONODIRECTIONAL LIGHT @ 50' C-C
- (K) REL TEMP CONC BARRIER @ 12:1 ON TAPERS UNLESS OTHERWISE NOTED
- (L) IMP ATTN REL FRN TL3

- LEGEND:**
- WORK ZONE
  - TEMPORARY CONCRETE BARRIER
  - TEMPORARY IMPACT ATTENUATOR
  - TEMPORARY SOIL RETENTION SYSTEM OR BRACED EXCAVATION
  - DIRECTION OF TRAFFIC FLOW
  - TYPE III BARRICADE
  - TYPE II BARRICADE OR DRUMS WITH STEADY BURN MONODIRECTIONAL LIGHT
  - DIRECTIONAL INDICATOR BARRICADE WITH STEADY BURN MONODIRECTIONAL LIGHT
  - SIGN
  - ARROW BOARD
  - REMOVAL LIMITS
  - TEMPORARY PAVEMENT



SEE STAGE 3B SHEETS  
FOR I-290  
LANE CONFIGURATION  
AND SIGNS



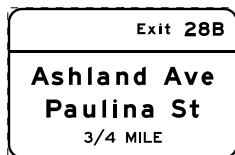
SEE STAGE 3B SHEETS FOR I-290  
LANE CONFIGURATION AND SIGNS

OH1 EXISTING OVERHEAD SIGNS TO REMAIN

OH3 EXISTING OVERHEAD SIGNS TO REMAIN

OH2 INSTALL BLACK ON ORANGE "RAMP CLOSED" PANEL ON DIAGONAL ACROSS EXISTING SIGN SEE DISTRICT DETAIL TC-08 FOR PANEL DETAILS (FROM PREVIOUS STAGE TO REMAIN)

**EXIT TO  
MORGAN ST  
PROHIBITED**

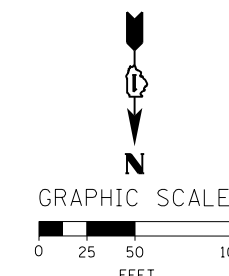


**TRAFFIC CONTROL LAYOUT INFORMATION**

POINT	STATION	OFFSET	LT/RT	BASELINE
1	351+38.06	0.0'	--	E-IKE-WB
2	1521+43.51	0.6'	RT	P-CIR-NWT
3	1522+35.39	0.0'	--	P-CIR-NWT
4	1523+42.19	0.0'	--	P-CIR-NWT
5	1523+84.44	0.0'	--	P-CIR-NWT
6	1523+84.44	11.0'	LT	P-CIR-NWT
7	1524+62.68	14.1'	LT	P-CIR-NWT
8	1525+62.41	5.0'	LT	P-CIR-NWT
9	347+31.37	7.0'	LT	E-IKE-WB
10	346+72.00	7.0'	LT	E-IKE-WB
11	349+00.00	4.0'	RT	E-IKE-WB
12	346+84.00	4.0'	RT	E-IKE-WB
13	346+72.00	19.0'	LT	E-IKE-WB
14	346+72.00	21.0'	LT	E-IKE-WB

POINT	STATION	OFFSET	LT/RT	BASELINE
15	347+31.37	19.0'	LT	E-IKE-WB
16	347+92.81	22.0'	LT	E-IKE-WB
17	348+17.63	25.0'	LT	E-IKE-WB
18	348+67.33	23.7'	LT	E-IKE-WB
19	349+49.82	29.3'	LT	E-IKE-WB
20	349+74.56	33.7'	LT	E-IKE-WB
21	21+54.35	1.6'	RT	E-CIR-SW
22	20+50.09	10.4'	LT	E-CIR-SW
23	21+25.37	3.9'	RT	E-CIR-SW
24	20+50.09	10.8'	RT	E-CIR-SW
25	20+40.74	2.6'	RT	E-CIR-SW
26	1522+35.39	2.0'	RT	P-CIR-NWT
27	1521+73.10	7.2'	RT	P-CIR-NWT
28	1525+60.63	2.0'	LT	P-CIR-NWT

POINT LOCATION



FILE PATH = C:\Project\60W26-sht-Staging3B1-01.dgn



D:\60W26-sht-Staging3B1-01.dgn  
USER NAME = auyeung  
PLOT SCALE = 50.0000' / in.  
PLOT DATE = 4/28/2014

DESIGNED - OPS  
DRAWN - PHP  
CHECKED - KCF  
DATE - 04/28/14

REVISED -  
REVISED -  
REVISED -  
REVISED -

STATE OF ILLINOIS  
DEPARTMENT OF TRANSPORTATION

SUGGESTED STAGES OF CONSTRUCTION AND TRAFFIC CONTROL PLAN  
MAINLINE STAGING 3B-1

SCALE: 1" = 50' SHEET 1 OF 2 SHEETS STA. TO STA.

F.A.I. RTE. 90/94/290	SECTION 2013-010R	COUNTY COOK	TOTAL SHEETS 747	SHEET NO. 151
CONTRACT NO. 60W26				
ILLINOIS FED. AID PROJECT				