

OH4 EXISTING OVERHEAD SIGNS TO REMAIN

OH5 EXISTING OVERHEAD SIGNS TO REMAIN

PROPOSED TEMP PAVEMENT MARKINGS AND TRAFFIC CONTROL DEVICES

- (A) TEMP EPOXY PVT MK LINE 4 (SOLID WHITE)
- (B) TEMP EPOXY PVT MK LINE 4 (SOLID YELLOW)
- (C) TEMP EPOXY PVT MK LINE 4 (2' DASH 6' SKIP, WHITE)
- (D) TEMP EPOXY PVT MK LINE 5 (10' DASH 30' SKIP, WHITE)
- (E) TEMP EPOXY PVT MK LINE 8 (SOLID WHITE)
- (F) TEMP EPOXY PVT MK LINE 12 (WHITE CHEVRONS @ 45°, 30' SPACING) (TYP)
- (G) TEMP CONC BARRIER @ 12:1 ON TAPERS UNLESS OTHERWISE NOTED
- (H) IMP ATTN TEMP FRN TL3
- (I) TYPE II BARRICADE OR DRUMS WITH STEADY BURN MONODIRECTIONAL LIGHT @ 50' C-C (TYP) ON TAPERS AND RAMP @ 100' C-C (TYP) ON TANGENTS
- (J) DIRECTIONAL INDICATOR BARRICADE WITH STEADY BURN MONODIRECTIONAL LIGHT @ 50' C-C
- (K) REL TEMP CONC BARRIER @ 12:1 ON TAPERS UNLESS OTHERWISE NOTED
- (L) IMP ATTN REL FRN TL3

- LEGEND:**
- WORK ZONE
 - TEMPORARY CONCRETE BARRIER
 - TEMPORARY IMPACT ATTENUATOR
 - TEMPORARY SOIL RETENTION SYSTEM OR BRACED EXCAVATION
 - DIRECTION OF TRAFFIC FLOW
 - TYPE III BARRICADE
 - TYPE II BARRICADE OR DRUMS WITH STEADY BURN MONODIRECTIONAL LIGHT
 - DIRECTIONAL INDICATOR BARRICADE WITH STEADY BURN MONODIRECTIONAL LIGHT
 - SIGN
 - ARROW BOARD
 - REMOVAL LIMITS
 - TEMPORARY PAVEMENT

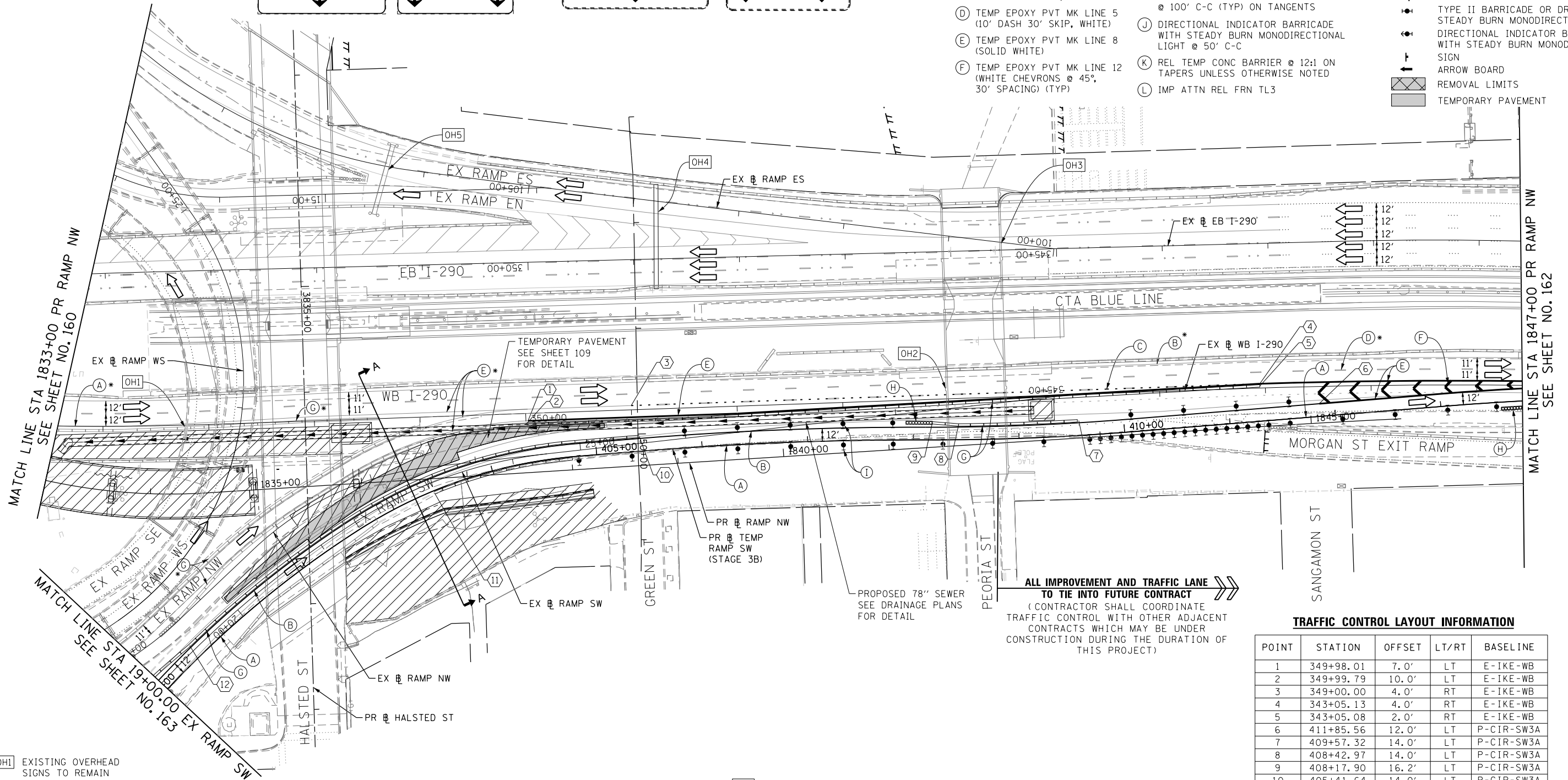
Congress Pkwy Chicago Loop

Wisconsin (90, 94 WEST Kennedy Expy)

Indiana (90, 94 EAST Ryan Expy)

Wisconsin (90, 94 WEST Kennedy Expy)

Indiana (90, 94 EAST Ryan Expy)



MATCH LINE STA 1833+00 PR RAMP NW SEE SHEET NO. 160

MATCH LINE STA 1847+00 PR RAMP NW SEE SHEET NO. 162

MATCH LINE STA 19+00-00 EX RAMP SW SEE SHEET NO. 163

OH1 EXISTING OVERHEAD SIGNS TO REMAIN

OH3 EXISTING OVERHEAD SIGNS TO REMAIN

OH2 INSTALL BLACK ON ORANGE "RAMP CLOSED" PANEL ON DIAGONAL ACROSS EXISTING SIGN SEE DISTRICT DETAIL TC-08 FOR PANEL DETAILS (FROM PREVIOUS STAGE TO REMAIN)

ALL IMPROVEMENT AND TRAFFIC LANE TO TIE INTO FUTURE CONTRACT (CONTRACTOR SHALL COORDINATE TRAFFIC CONTROL WITH OTHER ADJACENT CONTRACTS WHICH MAY BE UNDER CONSTRUCTION DURING THE DURATION OF THIS PROJECT)

TRAFFIC CONTROL LAYOUT INFORMATION

POINT	STATION	OFFSET	LT/RT	BASELINE
1	349+98.01	7.0'	LT	E-IKE-WB
2	349+99.79	10.0'	LT	E-IKE-WB
3	349+00.00	4.0'	RT	E-IKE-WB
4	343+05.13	4.0'	RT	E-IKE-WB
5	343+05.08	2.0'	RT	E-IKE-WB
6	411+85.56	12.0'	LT	P-CIR-SW3A
7	409+57.32	14.0'	LT	P-CIR-SW3A
8	408+42.97	14.0'	LT	P-CIR-SW3A
9	408+17.90	16.2'	LT	P-CIR-SW3A
10	405+41.64	14.0'	LT	P-CIR-SW3A
11	403+41.31	2.0'	RT	P-CIR-SW3A
12	400+69.15	14.0'	LT	P-CIR-SW3A

POINT LOCATION

EXIT TO MORGAN ST PROHIBITED

Wisconsin (90, 94 WEST Kennedy Expy)

Indiana (90, 94 EAST Ryan Expy)

Exit 28B

Ashland Ave Paulina St

3/4 MILE

EXIT 29B

RAMP CLOSED



FILE PATH = C:\Project\staging\160W28-sht-Staging3B-08.dgn



D160W28-sht-Staging3B-08.dgn
 USER NAME = auyeungh
 PLOT SCALE = 50.0000' / in.
 PLOT DATE = 4/28/2014

DESIGNED - OPS
 DRAWN - PHP
 CHECKED - KCF
 DATE - 04/28/14

REVISED -
 REVISED -
 REVISED -
 REVISED -

STATE OF ILLINOIS DEPARTMENT OF TRANSPORTATION

SUGGESTED STAGES OF CONSTRUCTION AND TRAFFIC CONTROL PLAN MAINLINE STAGING 3B-2

SCALE: 1" = 50' SHEET 9 OF 14 SHEETS STA. 1833+00 TO STA. 1847+00

F.A.I. RTE.	SECTION	COUNTY	TOTAL SHEETS	SHEET NO.
90/94/290	2013-010R	COOK	747	161

CONTRACT NO. 60W28
ILLINOIS FED. AID PROJECT