

OH4 EXISTING OVERHEAD SIGNS TO REMAIN
SEE CONTRACT 60W26 FOR SIGN DETAIL

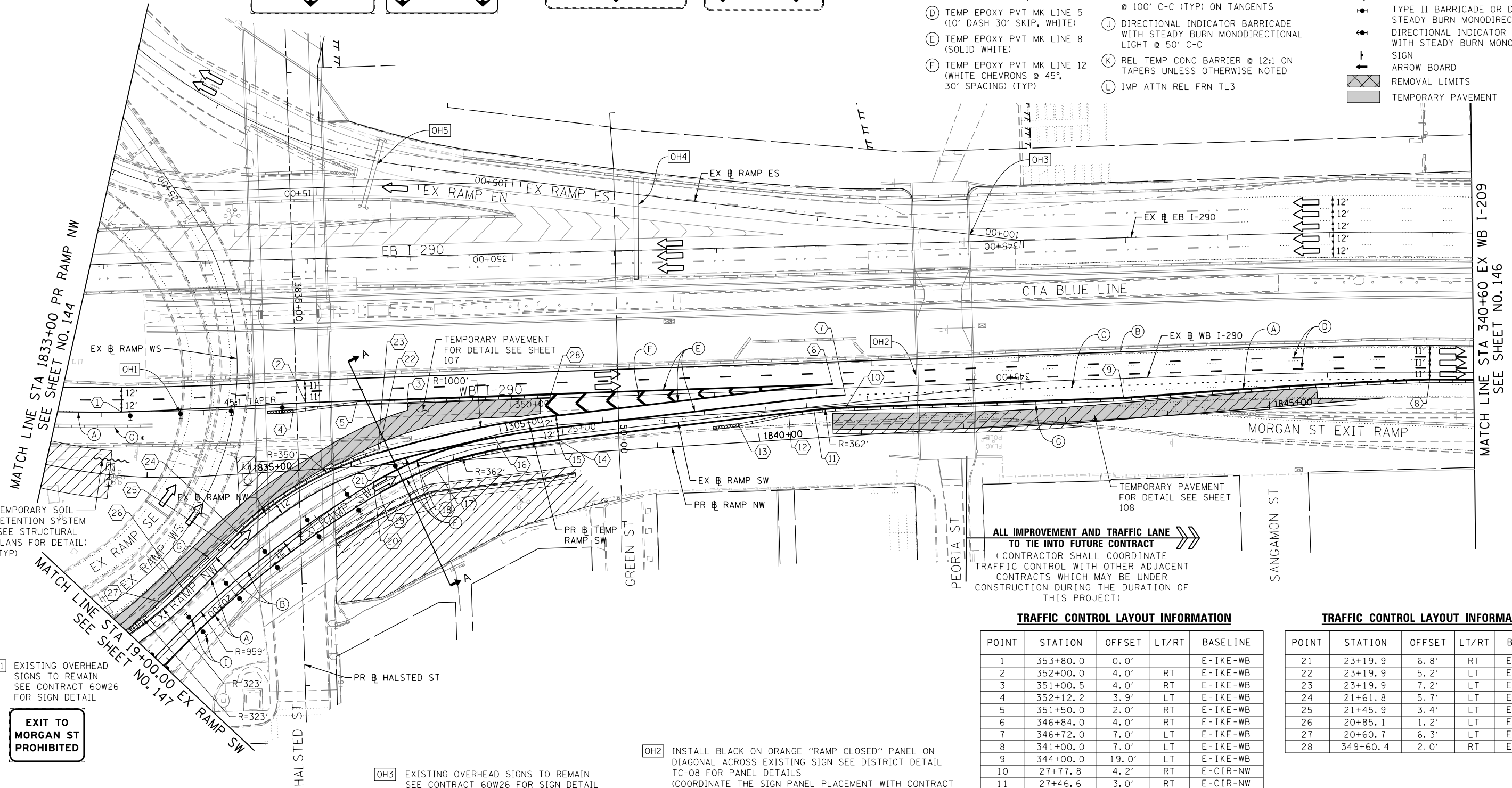
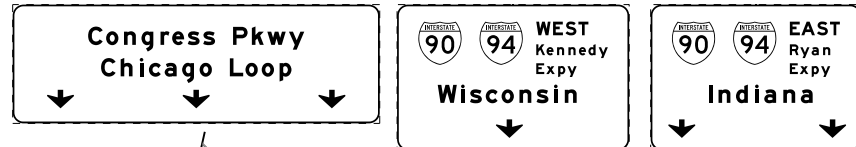
OH5 EXISTING OVERHEAD SIGNS TO REMAIN
SEE CONTRACT 60W26 FOR SIGN DETAIL

**PROPOSED TEMP PAVEMENT MARKINGS
AND TRAFFIC CONTROL DEVICES**

LEGEND:

- WORK ZONE
- TEMPORARY CONCRETE BARRIER
- TEMPORARY IMPACT ATTENUATOR
- TEMPORARY SOIL RETENTION SYSTEM OR BRACED EXCAVATION
- DIRECTION OF TRAFFIC FLOW
- TYPE III BARRICADE
- TYPE II BARRICADE OR DRUMS WITH STEADY BURN MONODIRECTIONAL LIGHT
- DIRECTIONAL INDICATOR BARRICADE WITH STEADY BURN MONODIRECTIONAL LIGHT @ 50' C-C
- SIGN
- ARROW BOARD
- REMOVAL LIMITS
- TEMPORARY PAVEMENT

- (A) TEMP EPOXY PVT MK LINE 4 (SOLID WHITE)
- (B) TEMP EPOXY PVT MK LINE 4 (SOLID YELLOW)
- (C) TEMP EPOXY PVT MK LINE 4 (2' DASH 6' SKIP, WHITE)
- (D) TEMP EPOXY PVT MK LINE 5 (10' DASH 30' SKIP, WHITE)
- (E) TEMP EPOXY PVT MK LINE 8 (SOLID WHITE)
- (F) TEMP EPOXY PVT MK LINE 12 (WHITE CHEVRONS @ 45°, 30' SPACING) (TYP)
- (G) TEMP CONC BARRIER @ 12:1 ON TAPERS UNLESS OTHERWISE NOTED
- (H) IMP ATTN TEMP FRN TL3
- (I) TYPE II BARRICADE OR DRUMS WITH STEADY BURN MONODIRECTIONAL LIGHT @ 50' C-C (TYP) ON TAPERS AND RAMP @ 100' C-C (TYP) ON TANGENTS
- (J) DIRECTIONAL INDICATOR BARRICADE WITH STEADY BURN MONODIRECTIONAL LIGHT @ 50' C-C
- (K) REL TEMP CONC BARRIER @ 12:1 ON TAPERS UNLESS OTHERWISE NOTED
- (L) IMP ATTN REL FRN TL3



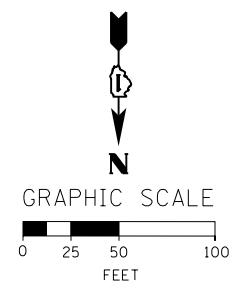
ALL IMPROVEMENT AND TRAFFIC LANE TO TIE INTO FUTURE CONTRACT
(CONTRACTOR SHALL COORDINATE TRAFFIC CONTROL WITH OTHER ADJACENT CONTRACTS WHICH MAY BE UNDER CONSTRUCTION DURING THE DURATION OF THIS PROJECT)

TRAFFIC CONTROL LAYOUT INFORMATION

POINT	STATION	OFFSET	LT/RT	BASELINE
1	353+80.0	0.0'		E-IKE-WB
2	352+00.0	4.0'	RT	E-IKE-WB
3	351+00.5	4.0'	RT	E-IKE-WB
4	352+12.2	3.9'	LT	E-IKE-WB
5	351+50.0	2.0'	RT	E-IKE-WB
6	346+84.0	4.0'	RT	E-IKE-WB
7	346+72.0	7.0'	LT	E-IKE-WB
8	341+00.0	7.0'	LT	E-IKE-WB
9	344+00.0	19.0'	LT	E-IKE-WB
10	27+77.8	4.2'	RT	E-CIR-NW
11	27+46.6	3.0'	RT	E-CIR-NW
12	27+21.6	5.2'	RT	E-CIR-NW
13	26+71.8	9.6'	RT	E-CIR-NW
14	24+95.4	4.5'	RT	E-CIR-NW
15	24+95.4	6.5'	RT	E-CIR-NW
16	24+33.4	5.2'	LT	E-CIR-NW
17	22+35.1	7.5'	RT	E-CIR-SW
18	22+19.2	10.1'	RT	E-CIR-SW
19	21+74.0	7.3'	RT	E-CIR-SW

TRAFFIC CONTROL LAYOUT INFORMATION

POINT	STATION	OFFSET	LT/RT	BASELINE
21	23+19.9	6.8'	RT	E-CIR-NW
22	23+19.9	5.2'	LT	E-CIR-NW
23	23+19.9	7.2'	LT	E-CIR-NW
24	21+61.8	5.7'	LT	E-CIR-NW
25	21+45.9	3.4'	LT	E-CIR-NW
26	20+85.1	1.2'	LT	E-CIR-NW
27	20+60.7	6.3'	LT	E-CIR-NW
28	349+60.4	2.0'	RT	E-IKE-WB

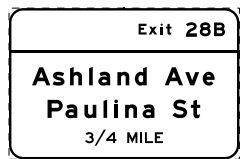
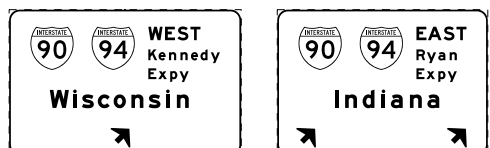


OH1 EXISTING OVERHEAD SIGNS TO REMAIN
SEE CONTRACT 60W26 FOR SIGN DETAIL

OH2 INSTALL BLACK ON ORANGE "RAMP CLOSED" PANEL ON DIAGONAL ACROSS EXISTING SIGN SEE DISTRICT DETAIL TC-08 FOR PANEL DETAILS (COORDINATE THE SIGN PANEL PLACEMENT WITH CONTRACT 60W26 AND 60W29)

OH3 EXISTING OVERHEAD SIGNS TO REMAIN
SEE CONTRACT 60W26 FOR SIGN DETAIL

EXIT TO MORGAN ST PROHIBITED



NOTES:
1. ALL TRAVEL LANES ON EB I-290, RAMP EN, RAMP ES, RAMP NW AND RAMP SW SHALL BE IN CURRENT STAGE AS PER CONTRACT 60W26 FINAL PAVEMENT MARKING.



D:\60W28-sht-Staging3A-08.dgn
USER NAME = auyeungh
PLOT SCALE = 50.0000' / in.
PLOT DATE = 4/28/2014

DESIGNED - OPS
DRAWN - PHP
CHECKED - KCF
DATE - 04/28/14

STATE OF ILLINOIS
DEPARTMENT OF TRANSPORTATION

**SUGGESTED STAGES OF CONSTRUCTION AND TRAFFIC CONTROL PLAN
MAINLINE STAGING 3A**
SCALE: 1" = 50' SHEET 9 OF 14 SHEETS STA. 1833+00 TO STA. 1847+00

F.A.I. RTE.	SECTION	COUNTY	TOTAL SHEETS	SHEET NO.
90/94/290	2013-010R	COOK	747	145

CONTRACT NO. 60W28
ILLINOIS FED. AID PROJECT