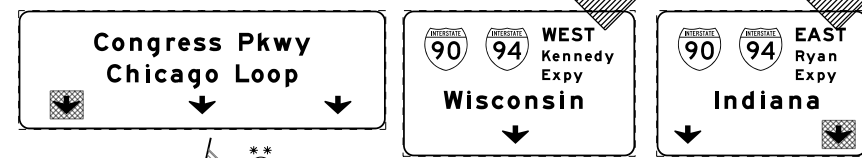
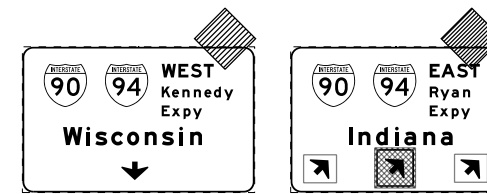


OH4 EXISTING OVERHEAD SIGNS TO REMAIN  
SEE CONTRACT 60W26 FOR SIGN DETAIL



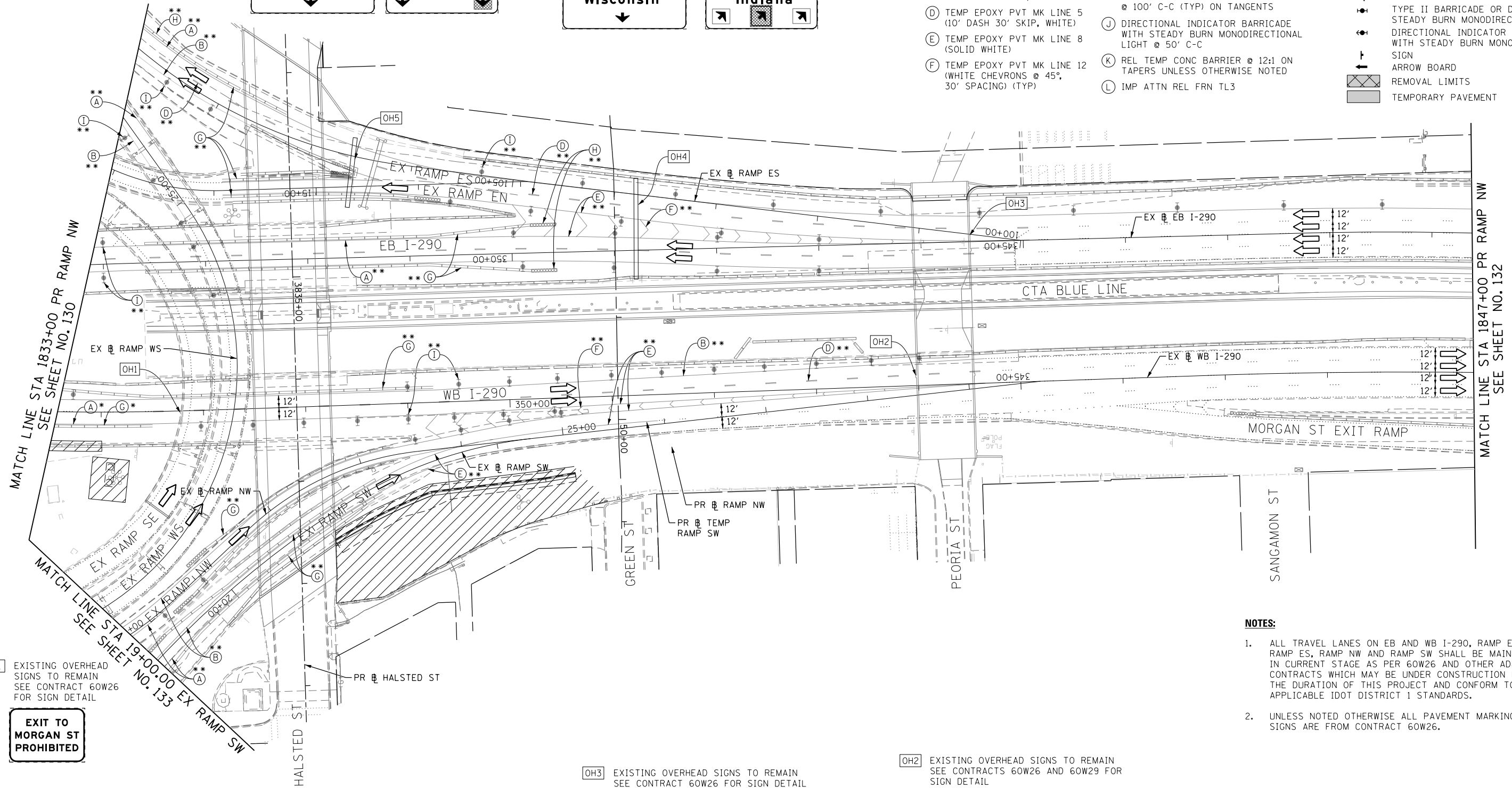
OH5 EXISTING OVERHEAD SIGNS TO REMAIN  
SEE CONTRACT 60W26 FOR SIGN DETAIL



**PROPOSED TEMP PAVEMENT MARKINGS  
AND TRAFFIC CONTROL DEVICES**

- (A) TEMP EPOXY PVT MK LINE 4 (SOLID WHITE)
- (B) TEMP EPOXY PVT MK LINE 4 (SOLID YELLOW)
- (C) TEMP EPOXY PVT MK LINE 4 (2' DASH 6' SKIP, WHITE)
- (D) TEMP EPOXY PVT MK LINE 5 (10' DASH 30' SKIP, WHITE)
- (E) TEMP EPOXY PVT MK LINE 8 (SOLID WHITE)
- (F) TEMP EPOXY PVT MK LINE 12 (WHITE CHEVRONS @ 45°, 30' SPACING) (TYP)
- (G) TEMP CONC BARRIER @ 12:1 ON TAPERS UNLESS OTHERWISE NOTED
- (H) IMP ATTN TEMP FRN TL3
- (I) TYPE II BARRICADE OR DRUMS WITH STEADY BURN MONODIRECTIONAL LIGHT @ 50' C-C (TYP) ON TANGENTS AND RAMP @ 100' C-C (TYP) ON TANGENTS
- (J) DIRECTIONAL INDICATOR BARRICADE WITH STEADY BURN MONODIRECTIONAL LIGHT @ 50' C-C
- (K) REL TEMP CONC BARRIER @ 12:1 ON TAPERS UNLESS OTHERWISE NOTED
- (L) IMP ATTN REL FRN TL3

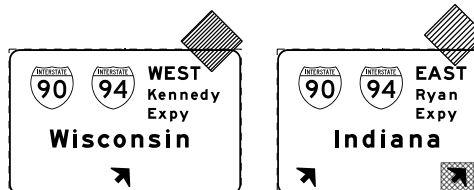
- LEGEND:**
- WORK ZONE
  - TEMPORARY CONCRETE BARRIER
  - TEMPORARY IMPACT ATTENUATOR
  - TEMPORARY SOIL RETENTION SYSTEM OR BRACED EXCAVATION
  - DIRECTION OF TRAFFIC FLOW
  - TYPE III BARRICADE
  - TYPE II BARRICADE OR DRUMS WITH STEADY BURN MONODIRECTIONAL LIGHT
  - DIRECTIONAL INDICATOR BARRICADE WITH STEADY BURN MONODIRECTIONAL LIGHT
  - SIGN
  - ARROW BOARD
  - REMOVAL LIMITS
  - TEMPORARY PAVEMENT



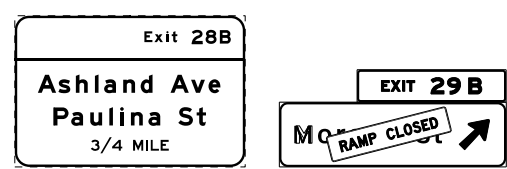
S1 EXISTING OVERHEAD SIGNS TO REMAIN  
SEE CONTRACT 60W26 FOR SIGN DETAIL

**EXIT TO MORGAN ST PROHIBITED**

OH3 EXISTING OVERHEAD SIGNS TO REMAIN  
SEE CONTRACT 60W26 FOR SIGN DETAIL

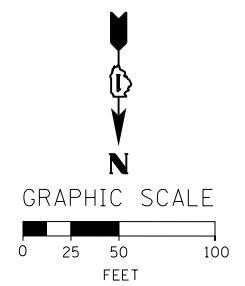


OH2 EXISTING OVERHEAD SIGNS TO REMAIN  
SEE CONTRACTS 60W26 AND 60W29 FOR SIGN DETAIL



- NOTES:**
- ALL TRAVEL LANES ON EB AND WB I-290, RAMP EN, RAMP ES, RAMP NW AND RAMP SW SHALL BE MAINTAINED IN CURRENT STAGE AS PER 60W26 AND OTHER ADJACENT CONTRACTS WHICH MAY BE UNDER CONSTRUCTION DURING THE DURATION OF THIS PROJECT AND CONFORM TO ALL APPLICABLE IDOT DISTRICT 1 STANDARDS.
  - UNLESS NOTED OTHERWISE ALL PAVEMENT MARKING AND SIGNS ARE FROM CONTRACT 60W26.

\* FROM PREVIOUS STAGE TO REMAIN  
\*\* FROM CONTRACT 60W26 TO REMAIN



FILE PATH = C:\Projects\60W28-sht-Staging2-08.dgn



D160W28-sht-Staging2-08.dgn  
USER NAME = ayeuengh  
PLOT SCALE = 50.0000' / in.  
PLOT DATE = 4/28/2014

DESIGNED - OPS  
DRAWN - PHP  
CHECKED - KCF  
DATE - 04/28/14

REVISED -  
REVISED -  
REVISED -  
REVISED -

**STATE OF ILLINOIS  
DEPARTMENT OF TRANSPORTATION**

**SUGGESTED STAGES OF CONSTRUCTION AND TRAFFIC CONTROL PLAN  
MAINLINE STAGING 2**  
SCALE: 1" = 50' SHEET 9 OF 14 SHEETS STA. 1833+00 TO STA. 1847+00

F.A.I. RTE.	SECTION	COUNTY	TOTAL SHEETS	SHEET NO.
90/94/290	2013-010R	COOK	747	131
CONTRACT NO. 60W28				
ILLINOIS FED. AID PROJECT				