

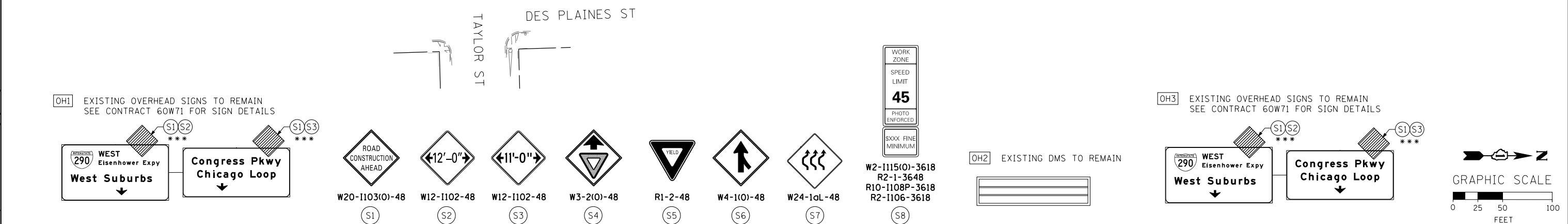
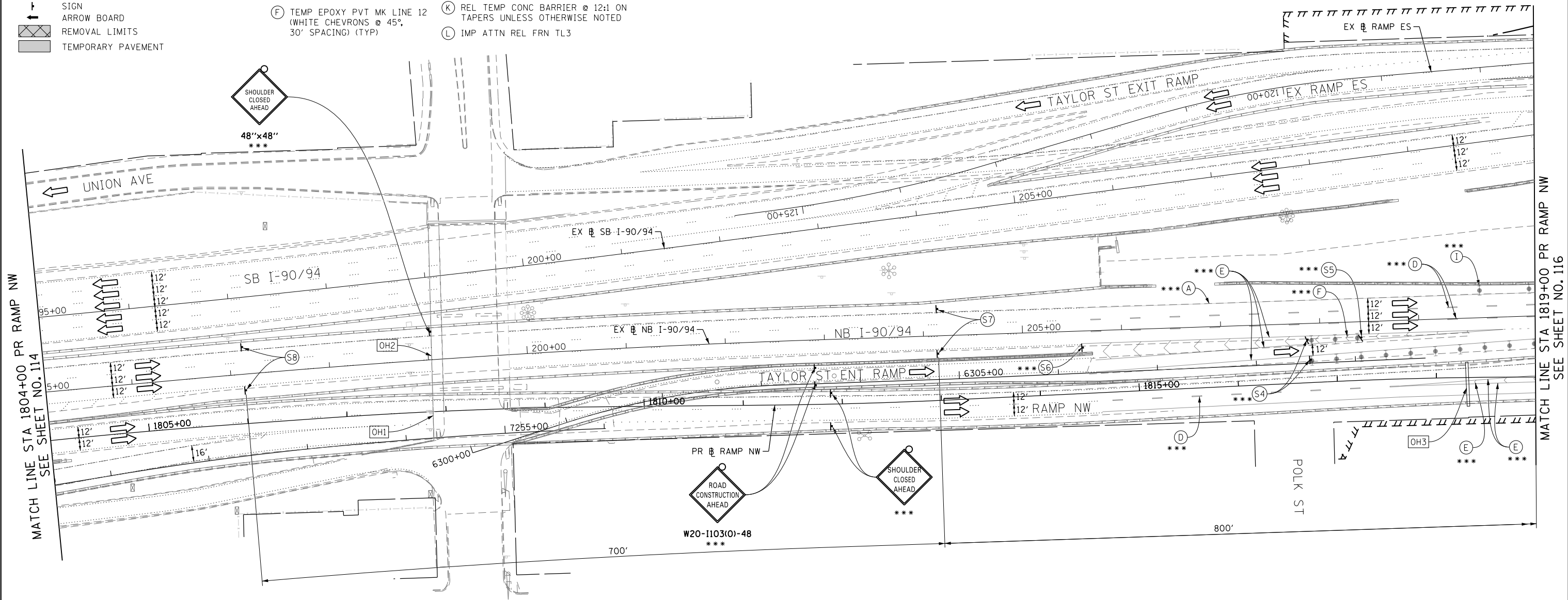
- LEGEND:**
- WORK ZONE
  - TEMPORARY CONCRETE BARRIER
  - TEMPORARY IMPACT ATTENUATOR
  - TEMPORARY SOIL RETENTION SYSTEM OR BRACED EXCAVATION
  - DIRECTION OF TRAFFIC FLOW
  - TYPE III BARRICADE
  - TYPE II BARRICADE OR DRUMS WITH STEADY BURN MONODIRECTIONAL LIGHT
  - DIRECTIONAL INDICATOR BARRICADE WITH STEADY BURN MONODIRECTIONAL SIGN
  - ARROW BOARD
  - REMOVAL LIMITS
  - TEMPORARY PAVEMENT

- PROPOSED TEMP PAVEMENT MARKINGS AND TRAFFIC CONTROL DEVICES**
- (A) TEMP EPOXY PVT MK LINE 4 (SOLID WHITE)
  - (B) TEMP EPOXY PVT MK LINE 4 (SOLID YELLOW)
  - (C) TEMP EPOXY PVT MK LINE 4 (2' DASH 6' SKIP, WHITE)
  - (D) TEMP EPOXY PVT MK LINE 5 (10' DASH 30' SKIP, WHITE)
  - (E) TEMP EPOXY PVT MK LINE 8 (SOLID WHITE)
  - (F) TEMP EPOXY PVT MK LINE 12 (WHITE CHEVRONS @ 45°, 30' SPACING) (TYP)
  - (G) TEMP CONC BARRIER @ 12:1 ON TAPERS UNLESS OTHERWISE NOTED
  - (H) IMP ATTN TEMP FRN TL3
  - (I) TYPE II BARRICADE OR DRUMS WITH STEADY BURN MONODIRECTIONAL LIGHT @ 50' C-C (TYP) ON TAPERS AND RAMP @ 100' C-C (TYP) ON TANGENTS
  - (J) DIRECTIONAL INDICATOR BARRICADE WITH STEADY BURN MONODIRECTIONAL LIGHT @ 50' C-C
  - (K) REL TEMP CONC BARRIER @ 12:1 ON TAPERS UNLESS OTHERWISE NOTED
  - (L) IMP ATTN REL FRN TL3

\*\* FROM CONTRACT 60W26 TO REMAIN  
 \*\*\* FROM CONTRACT 60W71 TO REMAIN

**NOTES:**

1. UNLESS NOTED OTHERWISE ALL PAVEMENT MARKING AND SIGNS ARE FROM CONTRACT 60W71. DETOUR AND EAST HARRISON BRIDGE CLOSURE SIGNING SHALL BE MAINTAINED AS PER CONTRACT 60W71.



D:\160\28-sht-Staging1-06.dgn  
 USER NAME = auyeungh  
 PLOT SCALE = 50.0000' / in.  
 PLOT DATE = 4/28/2014

DESIGNED - OPS	REVISED -
DRAWN - PHP	REVISED -
CHECKED - KCF	REVISED -
DATE - 04/28/14	REVISED -

STATE OF ILLINOIS  
 DEPARTMENT OF TRANSPORTATION

**SUGGESTED STAGES OF CONSTRUCTION AND TRAFFIC CONTROL PLAN**  
**MAINLINE STAGING 1**  
 SCALE: 1" = 50' SHEET 6 OF 13 SHEETS STA. 1804+00 TO STA. 1819+00

F.A.I. RTE.	SECTION	COUNTY	TOTAL SHEETS	SHEET NO.
90/94/290	2013-010R	COOK	747	115
CONTRACT NO. 60W28				
ILLINOIS FED. AID PROJECT				

FILE PATH = C:\Project\60W28-sht-Staging1-06.dgn

MATCH LINE STA 1819+00 PR RAMP NW  
SEE SHEET NO. 116