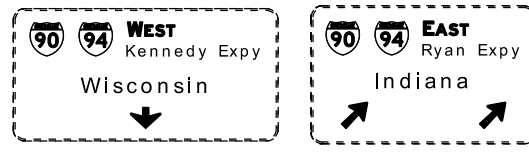
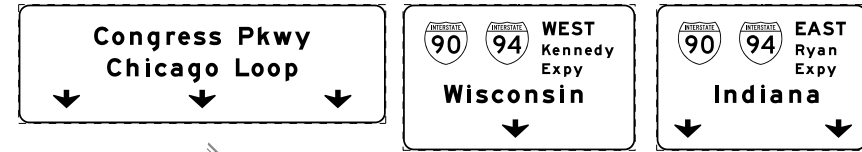


OH4 EXISTING OVERHEAD SIGNS TO REMAIN

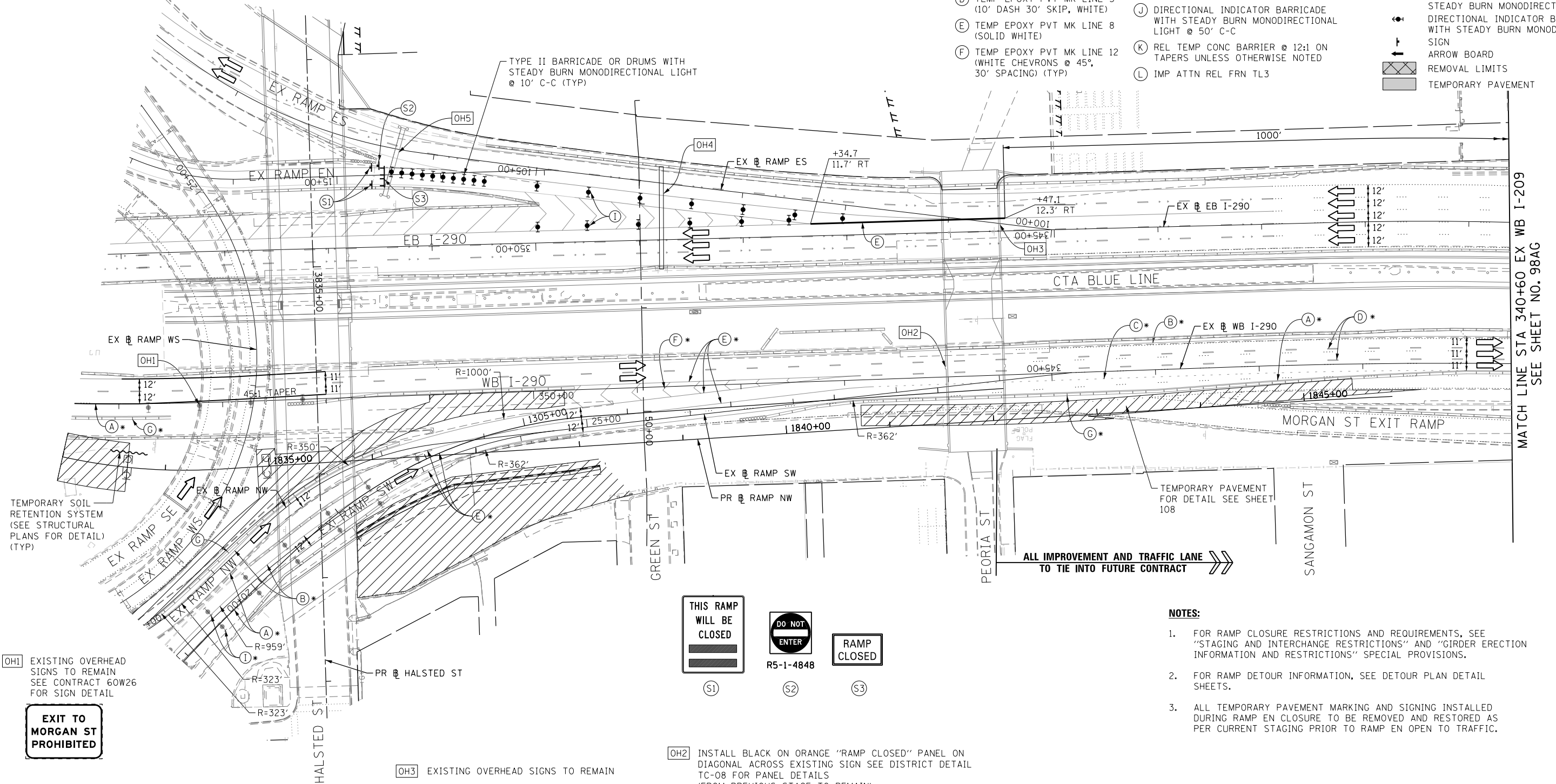
OH5 EXISTING OVERHEAD SIGNS TO REMAIN



PROPOSED TEMP PAVEMENT MARKINGS AND TRAFFIC CONTROL DEVICES

- (A) TEMP EPOXY PVT MK LINE 4 (SOLID WHITE)
- (B) TEMP EPOXY PVT MK LINE 4 (SOLID YELLOW)
- (C) TEMP EPOXY PVT MK LINE 4 (2' DASH 6' SKIP, WHITE)
- (D) TEMP EPOXY PVT MK LINE 5 (10' DASH 30' SKIP, WHITE)
- (E) TEMP EPOXY PVT MK LINE 8 (SOLID WHITE)
- (F) TEMP EPOXY PVT MK LINE 12 (WHITE CHEVRONS @ 45°, 30' SPACING) (TYP)
- (G) TEMP CONC BARRIER @ 12:1 ON TAPERS UNLESS OTHERWISE NOTED
- (H) IMP ATTN TEMP FRN TL3
- (I) TYPE II BARRICADE OR DRUMS WITH STEADY BURN MONODIRECTIONAL LIGHT @ 50' C-C (TYP) ON TANGENTS AND RAMP @ 100' C-C (TYP) ON TANGENTS
- (J) DIRECTIONAL INDICATOR BARRICADE WITH STEADY BURN MONODIRECTIONAL LIGHT @ 50' C-C
- (K) REL TEMP CONC BARRIER @ 12:1 ON TAPERS UNLESS OTHERWISE NOTED
- (L) IMP ATTN REL FRN TL3

- LEGEND:
- WORK ZONE
 - TEMPORARY CONCRETE BARRIER
 - TEMPORARY IMPACT ATTENUATOR
 - TEMPORARY SOIL RETENTION SYSTEM OR BRACED EXCAVATION
 - DIRECTION OF TRAFFIC FLOW
 - TYPE III BARRICADE
 - TYPE II BARRICADE OR DRUMS WITH STEADY BURN MONODIRECTIONAL LIGHT
 - DIRECTIONAL INDICATOR BARRICADE WITH STEADY BURN MONODIRECTIONAL SIGN
 - ARROW BOARD
 - REMOVAL LIMITS
 - TEMPORARY PAVEMENT



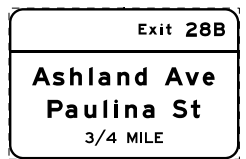
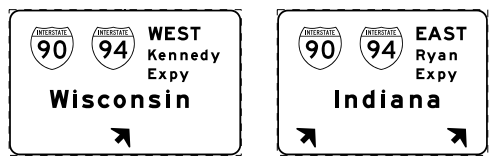
TEMPORARY SOIL RETENTION SYSTEM (SEE STRUCTURAL PLANS FOR DETAIL) (TYP)

OH1 EXISTING OVERHEAD SIGNS TO REMAIN SEE CONTRACT 60W26 FOR SIGN DETAIL

EXIT TO MORGAN ST PROHIBITED

OH3 EXISTING OVERHEAD SIGNS TO REMAIN

OH2 INSTALL BLACK ON ORANGE "RAMP CLOSED" PANEL ON DIAGONAL ACROSS EXISTING SIGN SEE DISTRICT DETAIL TC-08 FOR PANEL DETAILS (FROM PREVIOUS STAGE TO REMAIN)

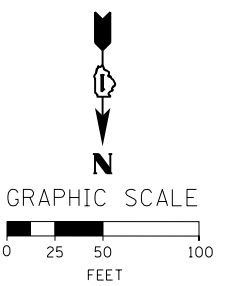


NOTES:

1. FOR RAMP CLOSURE RESTRICTIONS AND REQUIREMENTS, SEE "STAGING AND INTERCHANGE RESTRICTIONS" AND "GIRDER ERECTION INFORMATION AND RESTRICTIONS" SPECIAL PROVISIONS.
2. FOR RAMP DETOUR INFORMATION, SEE DETOUR PLAN DETAIL SHEETS.
3. ALL TEMPORARY PAVEMENT MARKING AND SIGNING INSTALLED DURING RAMP EN CLOSURE TO BE REMOVED AND RESTORED AS PER CURRENT STAGING PRIOR TO RAMP EN OPEN TO TRAFFIC.

* FROM PREVIOUS STAGE TO REMAIN

MATCH LINE STA 340+60 EX WB I-209 SEE SHEET NO. 98AG



FILE PATH = C:\Projects\60W26-sht-Staging3-RampEN-CL-01.dgn



D:\60W26-sht-Staging3-RampEN-CL-01.dgn
USER NAME = auyeungh
PLOT SCALE = 50.0000' / in.
PLOT DATE = 4/28/2014

DESIGNED - OPS	REVISED -
DRAWN - PHP	REVISED -
CHECKED - KCF	REVISED -
DATE - 04/28/14	REVISED -

STATE OF ILLINOIS DEPARTMENT OF TRANSPORTATION

SUGGESTED STAGES OF CONSTRUCTION AND TRAFFIC CONTROL PLAN MAINLINE STAGING 3A-3C - RAMP EN CLOSURE

SCALE: 1" = 50' SHEET 1 OF 3 SHEETS STA. 1833+00 TO STA. 340+60

F.A.I. RTE. 90/94/290	SECTION 2013-010R	COUNTY COOK	TOTAL SHEETS 747	SHEET NO. 98AF
CONTRACT NO. 60W26				
ILLINOIS FED. AID PROJECT				