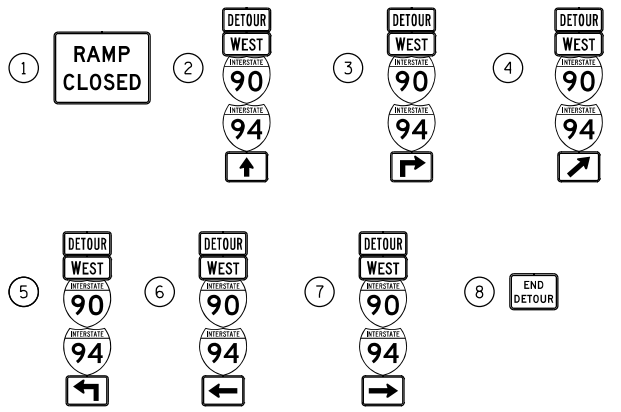
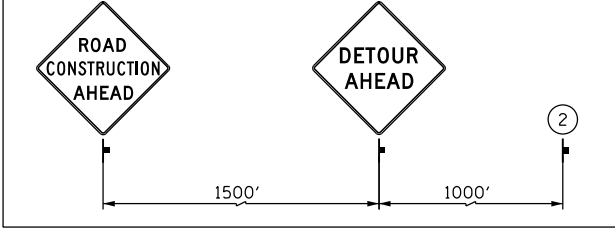


SIGN ASSEMBLIES

ADVANCE INFORMATION SIGNS



DETOUR SIGNS TYPE & SIZE

(ALL SIGN COLORS SHALL BE ACCORDING TO THE LATEST EDITION OF THE MUTCD)

- M1-1 (24"x24")
- M3-4 (24"x12")
- M4-8 (24"x12")
- M4-8A (24"x18")
- M5-1 (21"x15")
- M6-1 (21"x15")
- M6-2 (21"x15")
- M6-3 (21"x15")

- W20-2 (48"x48")
- W20-30-48

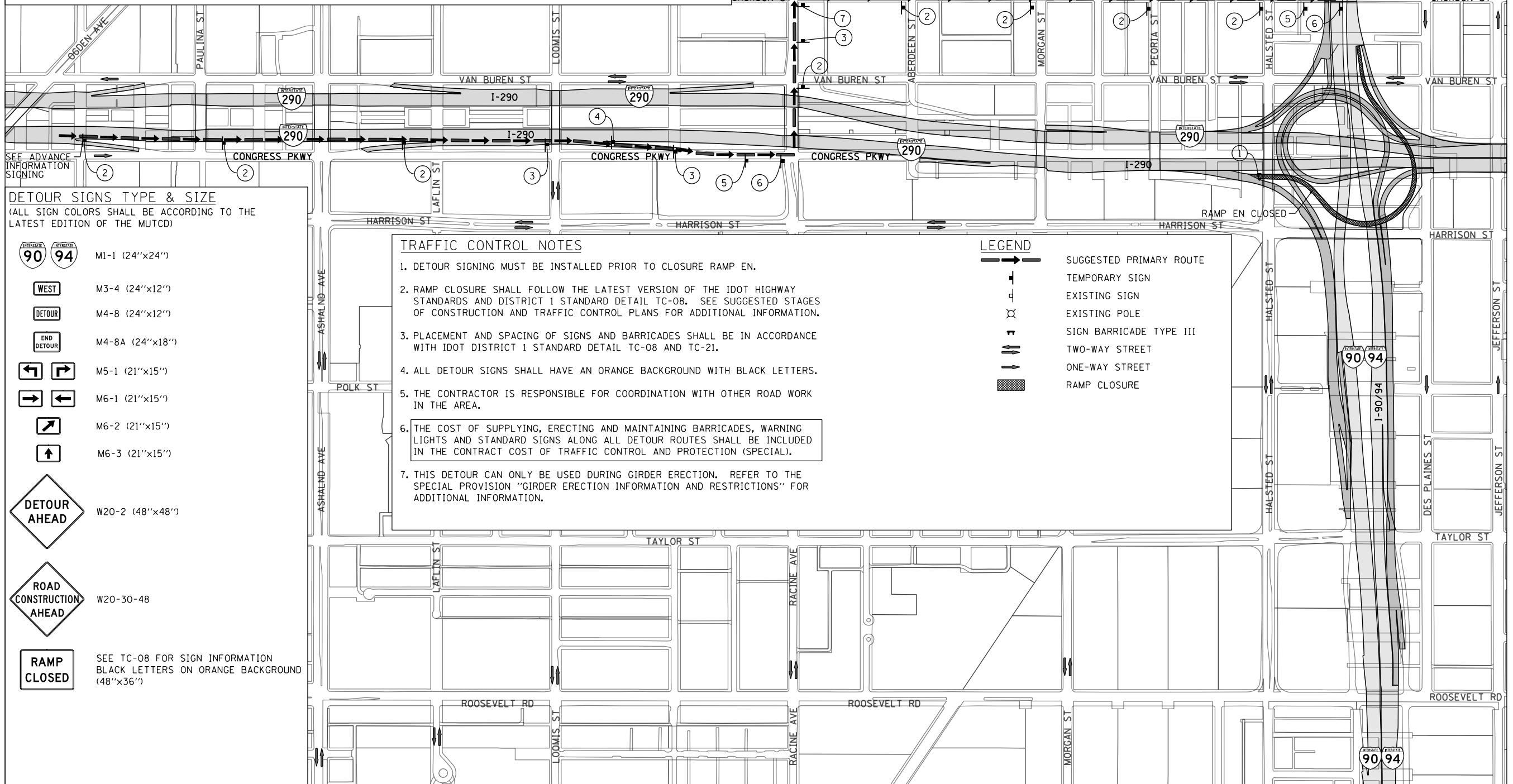
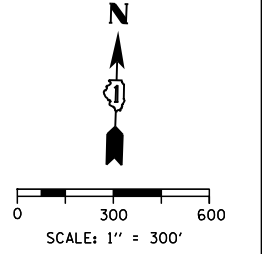
- SEE TC-08 FOR SIGN INFORMATION
BLACK LETTERS ON ORANGE BACKGROUND (48"x36")

TRAFFIC CONTROL NOTES

1. DETOUR SIGNING MUST BE INSTALLED PRIOR TO CLOSURE RAMP EN.
2. RAMP CLOSURE SHALL FOLLOW THE LATEST VERSION OF THE IDOT HIGHWAY STANDARDS AND DISTRICT 1 STANDARD DETAIL TC-08. SEE SUGGESTED STAGES OF CONSTRUCTION AND TRAFFIC CONTROL PLANS FOR ADDITIONAL INFORMATION.
3. PLACEMENT AND SPACING OF SIGNS AND BARRICADES SHALL BE IN ACCORDANCE WITH IDOT DISTRICT 1 STANDARD DETAIL TC-08 AND TC-21.
4. ALL DETOUR SIGNS SHALL HAVE AN ORANGE BACKGROUND WITH BLACK LETTERS.
5. THE CONTRACTOR IS RESPONSIBLE FOR COORDINATION WITH OTHER ROAD WORK IN THE AREA.
6. THE COST OF SUPPLYING, ERECTING AND MAINTAINING BARRICADES, WARNING LIGHTS AND STANDARD SIGNS ALONG ALL DETOUR ROUTES SHALL BE INCLUDED IN THE CONTRACT COST OF TRAFFIC CONTROL AND PROTECTION (SPECIAL).
7. THIS DETOUR CAN ONLY BE USED DURING GIRDER ERECTION. REFER TO THE SPECIAL PROVISION "GIRDER ERECTION INFORMATION AND RESTRICTIONS" FOR ADDITIONAL INFORMATION.

LEGEND

- SUGGESTED PRIMARY ROUTE
- TEMPORARY SIGN
- EXISTING SIGN
- EXISTING POLE
- SIGN BARRICADE TYPE III
- TWO-WAY STREET
- ONE-WAY STREET
- RAMP CLOSURE



FILE PATH = C:\Users\chiuh\Desktop\60W28-Post F.mxd\DETOURS\0160W28-sht-Detour-12.dgn



D160W28-sht-Detour-12.dgn
 USER NAME = chiuh
 PLOT SCALE = 600.0000' / in.
 PLOT DATE = 4/27/2014

DESIGNED - AFC	REVISED -
DRAWN - NSA	REVISED -
CHECKED - KCF	REVISED -
DATE - 4/28/2014	REVISED -

STATE OF ILLINOIS
 DEPARTMENT OF TRANSPORTATION

DETOUR PLAN
 RAMP EN (GIRDER ERECTION)
 SCALE: 1" = 300' SHEET 1 OF 1 SHEETS STA. TO STA.

F.A.I. R.E. 90/94/290	SECTION 2013-010R	COUNTY COOK	TOTAL SHEETS 747	SHEET NO. 90G
CONTRACT NO. 60W28			ILLINOIS FED. AID PROJECT	