

TRAFFIC CONTROL NOTES

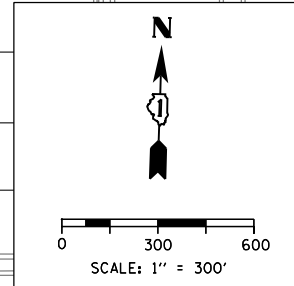
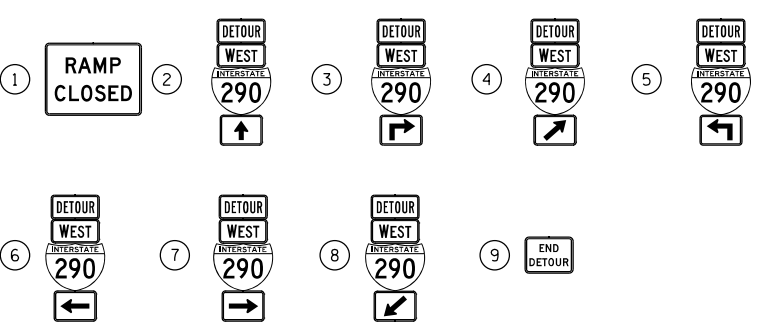
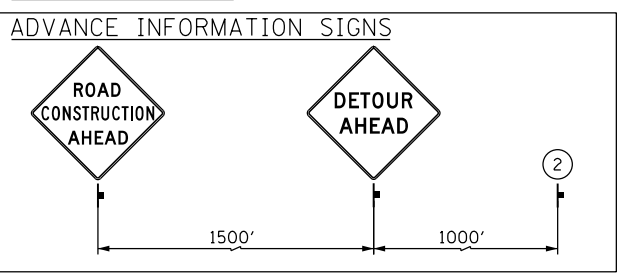
1. DETOUR SIGNING MUST BE INSTALLED PRIOR TO THE CLOSURE OF TEMPORARY RAMP NW.
2. RAMP CLOSURE SHALL FOLLOW THE LATEST VERSION OF THE IDOT HIGHWAY STANDARDS AND DISTRICT 1 STANDARD DETAIL TC-08. SEE SUGGESTED STAGES OF CONSTRUCTION AND TRAFFIC CONTROL PLANS FOR ADDITIONAL INFORMATION.
3. PLACEMENT AND SPACING OF SIGNS AND BARRICADES SHALL BE IN ACCORDANCE WITH IDOT DISTRICT 1 STANDARD DETAIL TC-08 AND TC-21.
4. ALL DETOUR SIGNS SHALL HAVE AN ORANGE BACKGROUND WITH BLACK LETTERS.
5. THE CONTRACTOR IS RESPONSIBLE FOR COORDINATION WITH OTHER ROAD WORK IN THE AREA.
6. THE COST OF SUPPLYING, ERECTING AND MAINTAINING BARRICADES, WARNING LIGHTS AND STANDARD SIGNS ALONG ALL DETOUR ROUTES SHALL BE INCLUDED IN THE CONTRACT COST OF TRAFFIC CONTROL AND PROTECTION (SPECIAL).
7. THIS DETOUR CAN ONLY BE USED DURING GIRDER ERECTION OF UNIT #3. REFER TO THE SPECIAL PROVISIONS "GIRDER ERECTION INFORMATION AND RESTRICTIONS" FOR ADDITIONAL INFORMATION.

DETOUR SIGNS TYPE & SIZE
 (ALL SIGN COLORS SHALL BE ACCORDING TO THE LATEST EDITION OF THE MUTCD)

- M1-1 (30"x24")
- M3-4 (24"x12")
- M4-8 (24"x12")
- M4-8A (24"x18")
- M5-1 (21"x15")
- M6-1 (21"x15")
- M6-2A (21"x15")
- M6-2 (21"x15")
- M6-3 (21"x15")

- LEGEND**
- SUGGESTED PRIMARY ROUTE FOR WB I-290
 - TEMPORARY SIGN
 - EXISTING SIGN
 - EXISTING POLE
 - SIGN BARRICADE TYPE III
 - TWO-WAY STREET
 - ONE-WAY STREET
 - RAMP CLOSURE

- SIGN ASSEMBLIES**
- ADVANCE INFORMATION SIGNS**
- W20-2 (48"x48")
 - W20-1103-48
 - SEE TC-08 FOR SIGN INFORMATION BLACK LETTERS ON ORANGE BACKGROUND (48"x36")



FILE PATH = C:\Users\Chiu\Desktop\60W28-Post\1\DETOUR\60W28-sht-Detour-11.dgn



D160W28-sht-Detour-11.dgn
 USER NAME = chiue
 PLOT SCALE = 600.0000' / in.
 PLOT DATE = 4/27/2014

DESIGNED - AFC	REVISED -
DRAWN - AFC	REVISED -
CHECKED - KCF	REVISED -
DATE - 4/28/2014	REVISED -

**STATE OF ILLINOIS
 DEPARTMENT OF TRANSPORTATION**

**DETOUR PLAN
 TEMPORARY RAMP NW (GIRDER ERECTION)**

SCALE: 1" = 300' SHEET 1 OF 1 SHEETS STA. TO STA.

F.A.I. RTE. 90/94/290	SECTION 2013-010R	COUNTY COOK	TOTAL SHEETS 747	SHEET NO. 90F
CONTRACT NO. 60W28				
ILLINOIS FED. AID PROJECT				